

## Amendment 1 to Sailing Instructions

- SI 7.4 is modified as follows:

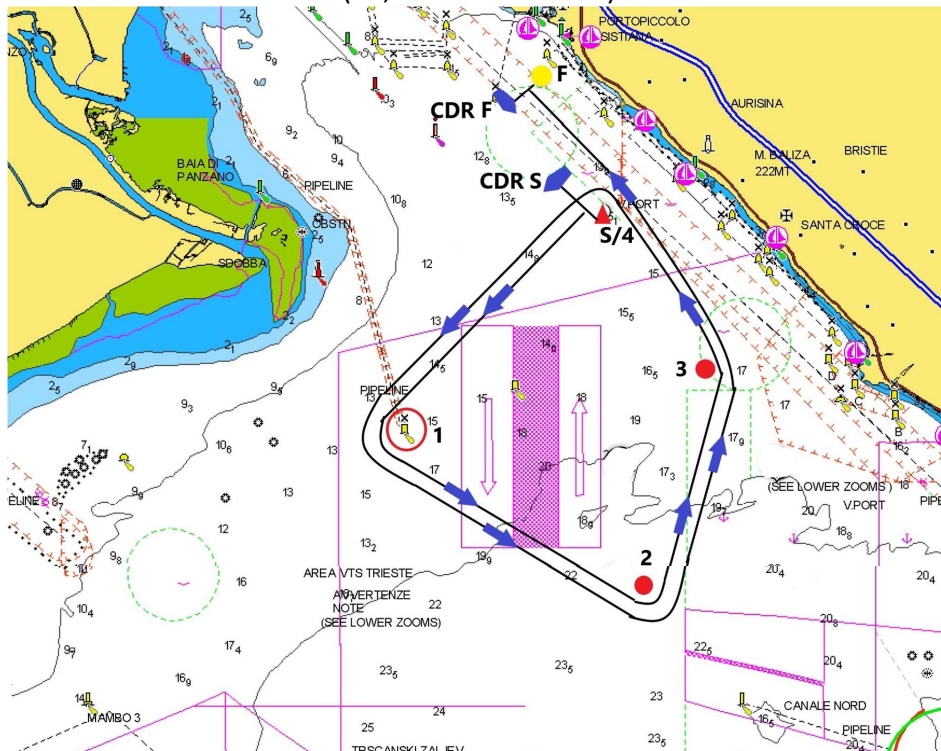
The start will be in the wind and consequently, if Mark 1 is not already in the wind, the race management team may place an inflatable pyramidal yellow mark. The laying of such a Mark will be signaled by the RC with the display of a red flag to indicate that the Mark 1 should be left to port or a green flag to indicate that the mark should be left to starboard and showing the approximate compass course before or together with the warning sign. The distance will be broadcasted via VHF.

- SI 21.2 add:

The dedicated VHF channel as per NoR 3.3 (communication boat to boat only) is Channel 08.

- Appendix A is substituted by the following:

**COURSE 1 – Number pennant 1: S-(Windward mark)-1-2-3-4-1-2-3-F  
(23,0 NM + wd mark)**

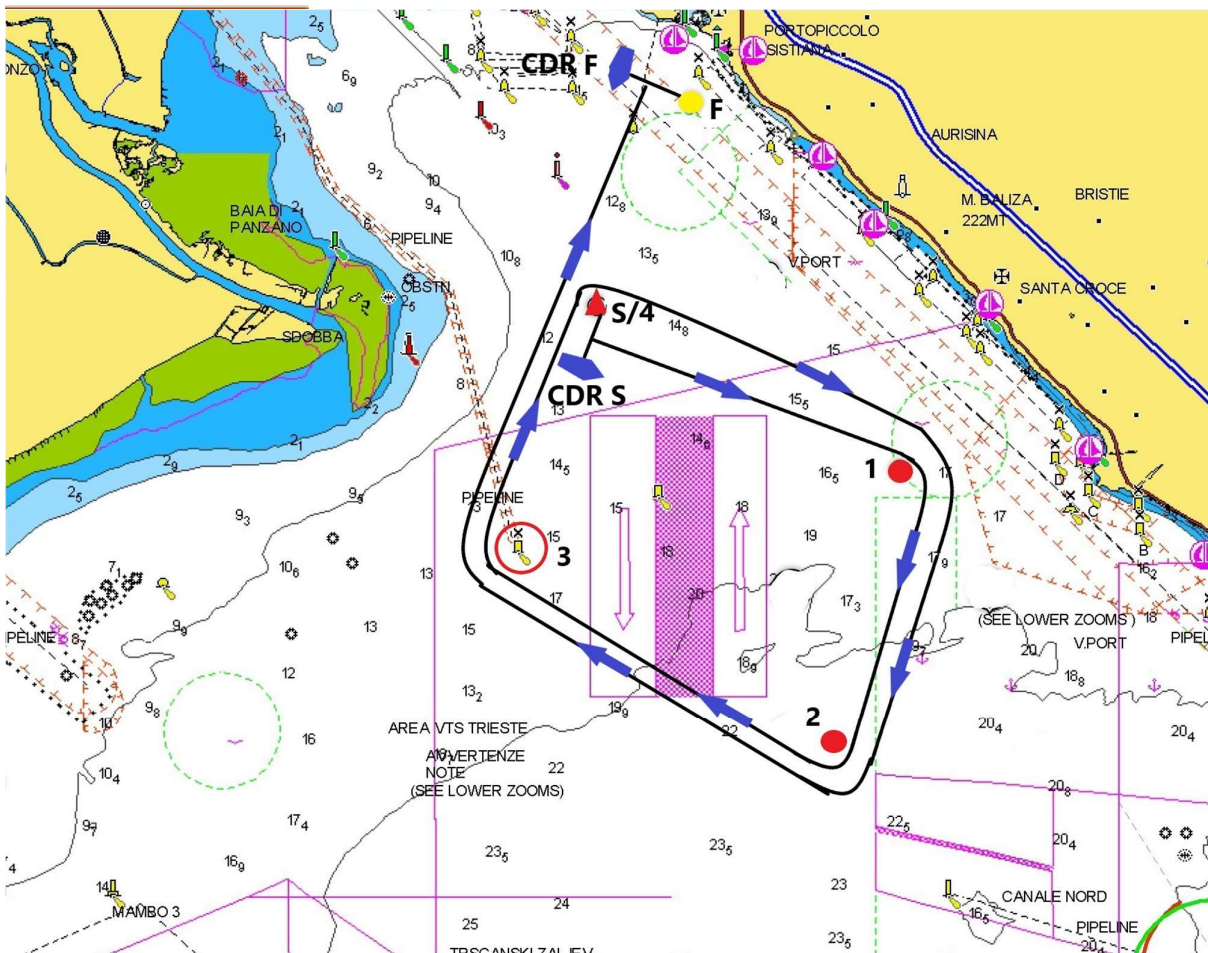


Mark S/4	Controstarter rib or pyramidal yellow mark	45°44.000' N – 13°38.700' E	From Start to mark 1 ◊ 222°
Windward Mark	Pyramidal yellow mark	At wind from Start	
Mark 1	Special use buoy yellow color with St. Andrew's cross (end of pipeline)	45°41.580' N – 13°35.630' E	From mark 1 to mark 2 ◊ 121°
Mark 2	Pyramidal yellow mark	45°39.960' N – 13°39.400' E	From mark 2 to mark 3 ◊ 015°

Mark 3	Pyramidal yellow mark	45°42.300' N – 13°40.300' E	From mark 3 to mark 4 ◊ 327° from mark 3 to Finish ◊ 331°
Finish line	Pyramidal yellow mark	45°45 450' N – 13°37 760' E	

Direction for mark 1 and variable side length depending on the positioning of windward mark:  
red flag ◊ mark to be left on port- green flag ◊ mark be left on starboard

COURSE 2 – Number pennant 2: S-( Windward mark)-1-2-3-4-1-2-3-F  
(23,2 NM + Wd mark)

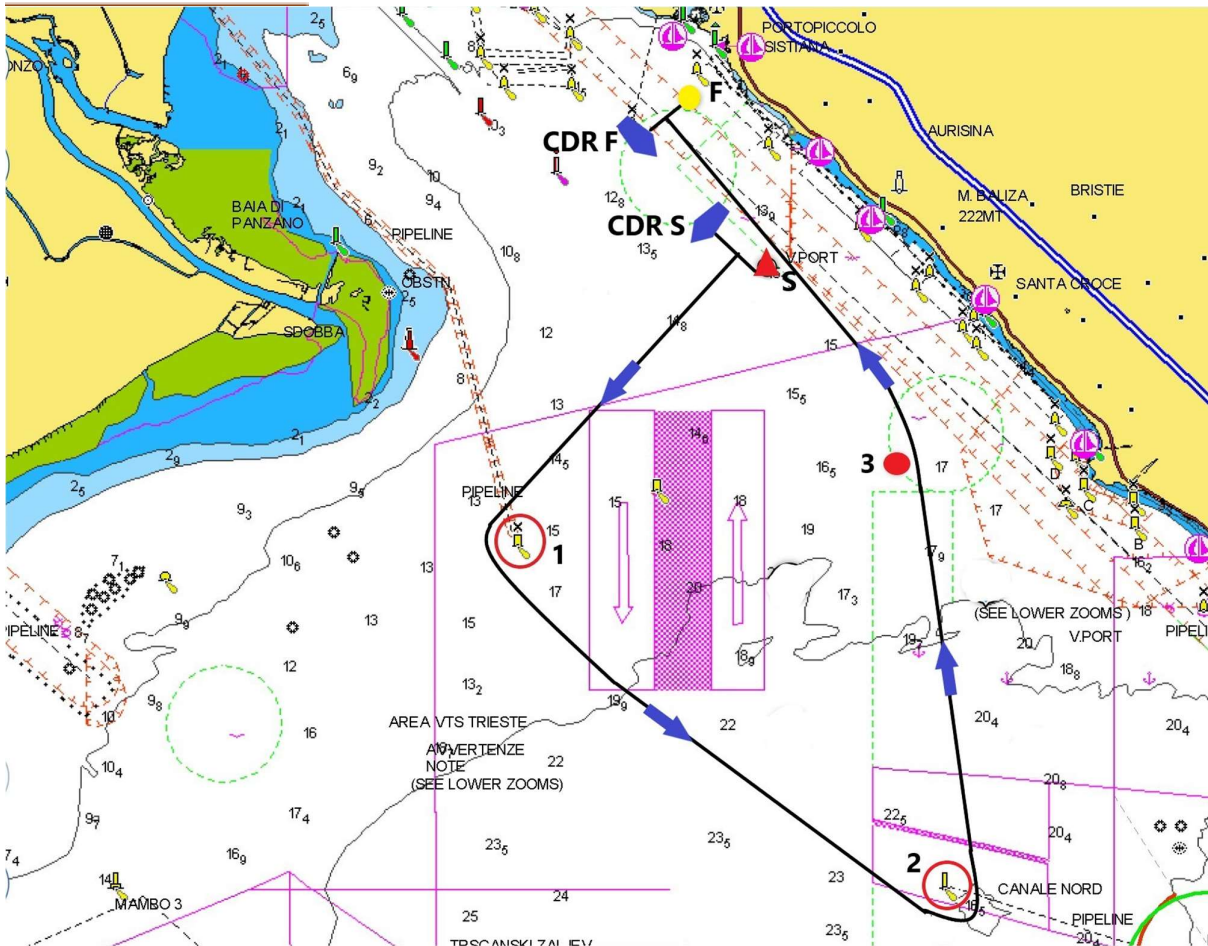


Mark S/4	Controstarter rib or pyramidal yellow mark	45°43.700' N – 13°36.600' E	From Start to mark 1 ◊ 118°
Windward Mark	Pyramidal yellow mark	At wind from Start	
Mark 1	Pyramidal yellow mark	45°42.300' N – 13°40.300' E	From mark 1 to mark 2 ◊ 195°
Mark 2	Pyramidal yellow mark	45°39.960' N – 13°39.400' E	From mark 2 to mark 3 ◊ 301°
Mark 3	Special use buoy yellow color with St.Andrew's cross (end of pipeline)	45°41.580' N – 13°35.630' E	From mark 3 to mark 4 ◊ 018° to mark 3 to Finish ◊ 021°

Finish line	Pyramidal yellow mark	45°45 450' N – 13°37 760' E	
-------------	-----------------------	--------------------------------	--

Direction for mark 1 and variable side length depending on the positioning of windward mark:  
red flag ◊ mark to be left on port- green flag ◊ mark be left on starboard

**COURSE 3 – Numeral pennant 3: S-( Windward mark)-1-2-3-F  
(15,2 NM+ wd mark)**

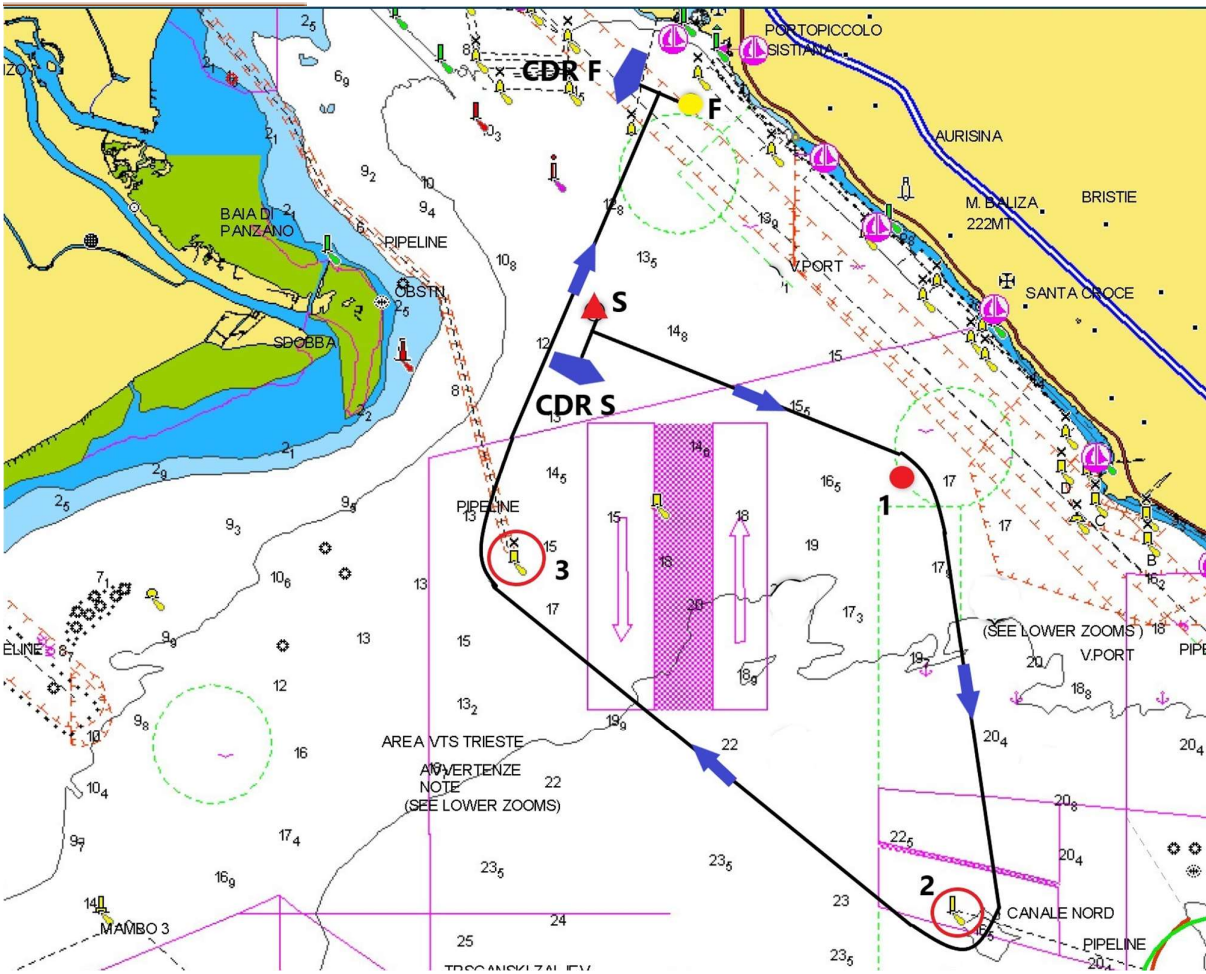


Mark S	Controstarter rib or pyramidal yellow mark	45°44.000' N – 13°38.700' E	From mark S to mark 1 ◊ 222°
Windward Mark	Pyramidal yellow mark	At wind from Start	
Mark 1	Special use buoy yellow color with St.Andrew's cross (end of pipeline)	45°41.580' N – 13°35.630' E	Form mark 1 to mark 2 ◊ 129°
Mark 2	Yellow color Buoy (end of pipeline)	45°38.636' N – 13°40.897' E	From mark 2 to mark 3 ◊ 353°
Mark 3	Pyramidal yellow mark	45°42.300' N – 13°40.300' E	From mark 3 to mark F ◊ 331°
Finish line	Pyramidal yellow mark	45°45 450' N – 13°37 760' E	

Direction for mark 1 and variable side length depending on the positioning of windward mark:  
red flag ◊ mark to be left on port- green flag ◊ mark be left on starboard



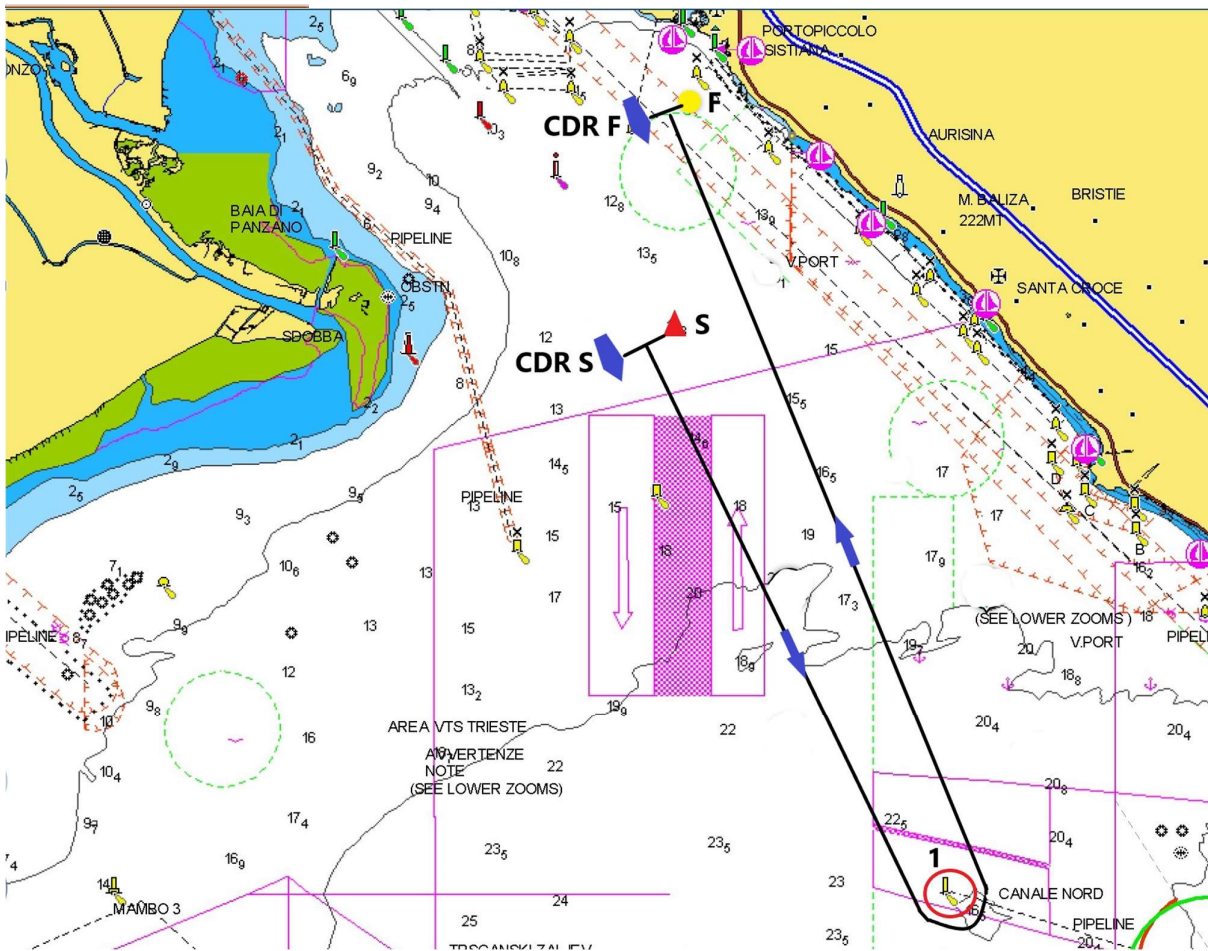
COURSE 4 – Numeral pennant 4: S-( Windward mark)-1-2-3-F  
(15,4 NM + Wd Mark)



Mark S	Controstarter rib or pyramidal yellow mark	45°43.700' N – 13°36.600' E	From mark S to mark 1 $\diamond$ 118°
Windward Mark	Pyramidal yellow mark	At wind from Start	
Mark 1	Pyramidal yellow mark	45°42.300' N – 13°40.300' E	From mark 1 to mark 2 $\diamond$ 173°
Mark 2	Yellow color Buoy (end of pipeline)	45°38.636' N – 13°40.897' E	From mark 2 to mark 3 $\diamond$ 309°
Mark 3	Special use buoy yellow color with St.Andrew's cross (end of pipeline)	45°41.580' N – 13°35.630' E	From mark 3 to mark F $\diamond$ 021°
Finish line	Pyramidal yellow mark	45°45 450' N – 13°37 760' E	

Direction for mark 1 and variable side length depending on the positioning of windward mark:  
red flag  $\diamond$  mark to be left on port - green flag  $\diamond$  mark be left on starboard

COURSE 5– Numeral pennant: 5 S-( Windward mark)-1-F  
(12,8 NM+ Wd mark)



Mark S	Controstarter rib or pyramidal yellow mark	45°43.700' N – 13°37.500' E	From mark S to mark 1 ◇ 155°
Windward Mark	Pyramidal yellow mark	At wind from Start	
Mark 1	Floating beacon yellow color (end of pipeline)	45°38.636' N – 13°40.897' E	From mark 1 to mark F ◇ 342°
Finish line	Pyramidal yellow mark	45°45 450' N – 13°37 760' E	

Direction for mark 1 and variable side length depending on the positioning of windward mark:  
red flag ◇ mark to be left on port- green flag ◇ mark be left on starboard