

**FORMULA KITE**  
*Olympic Kiteboarding*

# **2024 FORMULA KITE WORLD CHAMPIONSHIPS**

## **NOTICE OF RACE & SAILING INSTRUCTIONS (NoR/SI)**

To be supplemented by Local Sailing Instructions (LSI)

Published: 09 December 2023

Last amended: Initial Version

# 1 DATE AND VENUE

---

Venue	Organizing Authority	Dates
Plage de vieux Salins Hyères FRANCE	HKA under the authority of the Formula Kite Class Association	11 May 2024 - 19 May 2024
43°06'59.6"N 6°12'11.2" E		

If the event is cancelled, any paid entry fees will be refunded in full.  
The organizing authority will not be liable for any other expenses incurred.

# 2 RULES

---

- 2.1 The event is governed by the rules as defined in The Racing Rules of Sailing (RRS). Other documents under RRS Definition: Rule (g) are published on the Official Notice Board and include:
  - 2.1.1 [NP] [DP] [SP] The Equipment Regulations (ER);
  - 2.1.2 [NP] [DP] [SP] The Support Team Regulations (including Support Vessels) (STR); and
  - 2.1.3 [NP] [DP] The Athlete Media Regulations (AMR)
- 2.2 RRS Appendix F applies.
- 2.3 National prescriptions apply, see <https://www.sailing.org/tools/documents/20172020FRAPrescriptions-%5B22393%5D.pdf>
- 2.4 For the Medal Series, World Sailing Appendix FMS Kiteboarding Medal Series available on the World sailing website ([www.sailing.org](http://www.sailing.org)), applies and changes a number of racing rules. The version that is current when the event begins will be published on the Official Notice Board. This changes RRS 63.7.
- 2.5 Local Sailing Instructions (LSI) will be published no later than on the day before the first warning signal and may change or supplement rules in these NoR/SIs.
- 2.6 In all rules governing the event;
  - 2.6.1 The terms 'rider', 'competitor', 'crew', and 'athlete' mean a person competing, or intending to compete, in the event;
  - 2.6.2 [SP] denotes a rule for which a standard penalty may be applied by the race committee or technical committee without a hearing. Additional rules marked [SP] are listed in NoR/SI 18. This changes RRS A5.
  - 2.6.3 [NP] denotes a rule that shall not be grounds for protest by a kiteboard and for which the protest committee may refuse to hold a hearing. Additional rules marked [NP] are listed in NoR/SI 18. This changes RRS 60.1(a) and 63.1.
- 2.7 If there is a conflict between languages the English text will take precedence.
- 2.8 Changed Rules:
  - 2.8.1 Add rule RRS 62.1(e): the action of a drone, or any other flying device.
  - 2.8.2 Actions by event officials to implement medical pandemic guidance, protocols, or legislation, even if they later prove to have been unnecessary, will not be grounds for redress. This changes RRS 62.1(a).
  - 2.8.3 From 1 hour before the scheduled warning signal of the first race until the end of the protest time of the last race of the event, a kiteboard may change her kite but only in the launching area.

## 3 EVENTS, QUOTAS AND ELIGIBILITY

---

- 3.1 Only competitors registered by a Member National Authority (MNA) in good standing with World Sailing are eligible to enter the event.
- 3.2 There will be competition in the following events, classes and division:

Event	Class	Max. Quota	Min. Quota
Men's Kiteboarding	Formula Kite	90	30
Women's Kiteboarding	Formula Kite	60	20

- 3.2.1 Exceptions to the maximum quota may be made at the discretion of the organizing authority. Additional quota places will be granted to one competitor per event for MNAs that have not yet entered any competitor.
- 3.2.2 The Organizing Authority may cancel an event if the minimum number of entries has not been confirmed and paid 14 days before the on-site registration day of the event. Competitors will be notified of event cancellation by email and posting on the IKA website. Entry fees will be refunded.
- 3.3 World Sailing Eligibility in accordance with World Sailing Regulation 19 is required of all athletes.
- 3.4 Each athlete shall be registered as a World Sailing Sailor on the World Sailing website: <https://www.sailing.org/sailors/world-sailing-profile/>
- 3.5 On 1 March 2022 World Sailing published the following recommendations in reaction to the situation in Ukraine: <https://www.sailing.org/2022/03/01/world-sailing-statement-6/>. To help preserve the integrity and safety of the event, entries shall not be open to competitors and support persons holding only Russian or Belarussian nationality. The Organizing Authority may amend this rule following any further World Sailing decisions on the situation with Russia and Belarus.
- 3.6 Each athlete shall be a national of the country they represent (see World Sailing Regulations 19.8 to 19.18). Each athlete shall upload proof of their nationality to the online registration system.
- 3.7 Each competitor shall be a member of an IKA member (National Class Association) of either his/her nationality or his/her country of permanent residence. Evidence of membership shall be presented at registration if requested. If no current member exists, the competitor shall become individual member of IKA. Membership formalities may be completed on site.

## 4 ENTRY, REGISTRATION AND FEES

---

- 4.1 The Qualification System for the event shall apply and confirms the quota process and entry deadlines. The Qualification System is published on the official notice board.
- 4.2 Applications for quota places in accordance with the Qualification System shall be made through the online registration system at [www.kiteclasses.org/register](http://www.kiteclasses.org/register).
- 4.3 MNAs with entrants shall register their main point of contact and team leader through the online registration system.
- 4.4 Registration fees per entry are as follows (all plus credit card fees) and are not refundable except if the event is cancelled:

Early Bird Entry Fee	Early Bird Deadline	Regular Entry Fee	Regular Entry Deadline	Late Entry Fee
		300 EUR	11 April	400 EUR

- 4.5 Competitors shall provide the following documentation prior to completing registration formalities on site:
- Proof of entry fee payment;
  - Evidence of national class association membership;
  - Proof of nationality;
  - Proof of age;
  - World Sailor ID;
  - Parental/legal guardian consent - for those under the age of 18; (see attachments) and
  - Medical Treatment Permission - for those under the age of 18 or on their parent's medical insurance policy (see attachments).

4.6 Support Teams

4.6.1 Support persons, support team vessels and team leaders shall be registered online (registration system to be provided via the registration website) and comply with local legislation and the Support Team Regulations. The local organizing authority may refuse registrations or accept later registrations at their discretion.

4.6.2 The Organizing Authority may, at its discretion refuse support team vessels entry to the venue if they are deemed unsuitable. Generally, open vessels less than 7.5 metres in length, having minimum or no superstructure (cabin, coach house, bridge etc.), will be considered suitable.

4.6.3 The registration fee for support persons and support vessels are as follows:

Support Person Type	Entry Fee
Support Vessel including 1 support person	200 EUR
Other support persons (incl. benefits as for competitors)	200 EUR

The amount shall be paid in cash during on-site registration or via credit card during the registration process.

This support vessel fee includes slipway/crane use, trailer, and car parking close to the marina.

- 4.6.4 Support persons shall provide the following documentation prior to completing registration formalities on site:
- Proof of registration fee payment;
  - List of athletes or MNAs supported;
  - Boat Driving License (if applicable); and

4.7 [NP] [SP] [DP] Competitors, support persons and team leaders shall personally sign the registration form at the Race Office at the specified time.

4.8 An entry is not complete until payment has been received and the kiteboard or support person has completed registration. Registration may include equipment and entry requirement checks.

## 5 SCHEDULE

5.1 The schedule will be as follows (all times are local):

Date	Activity	Time
10 May 2024	Arrival, venue opens	
11 May 2024	On-Site Registration	1400-1800
12 May 2024	Equipment Inspection Opening Ceremony / Welcome 1800	1000-1800
13 May 2024	Equipment Inspection	0800-1300
	Practice Race	1330

	Equipment Inspection	1500-1800
	Profile Picture Photo Shoot (mandatory)	0900-1800
	Technical Meeting	1900
<b>14 May – 19 May 2024</b>	Racing (see Addendum 3)	1000
<b>19 May 2024</b>	Prize Giving and Closing Ceremony	1800
<b>20 May 2024</b>	Departure, venue closes	

- 5.2 There will be a daily briefing for competitors and support persons / team leaders one hour before the first scheduled warning signal of the day.
- 5.3 Addendum 3 shows the provisional race schedule, including the time of the first warning signal and the number of scheduled races.
- 5.4 Any change to Addendum 3 will be posted no later than 21:00 on the previous evening of any race affected.
- 5.5 The Race Committee may change the schedule to sail one race ahead of schedule.
- 5.6 Not more than a total of 6 races per fleet will be sailed per day.
- 5.7 The Medal Series will not be scheduled on the same day as an Opening Series race for that event.
- 5.8 The first warning signal for the first race on 14 May 2024 will not be before 1000.
- 5.9 On the last day of racing no warning signal will be made after 1730.

## 6 FORMAT AND SCORING

---

- 6.1 One race for all fleets is required to be completed to constitute an event.
- 6.2 The format for each event will be:

Event	Format	Number of Races
<b>Men's and Women's Kiteboarding</b>	Opening Series + Medal Series (Semi Finals and Finals) for the top 10 kiteboards <b>See Addendum 5</b>	20 + Medal Series

- 6.3 Events may be split into groups when there are more than 30 entries in an event. Events will be split into groups when there are more than 40 entries in an event.
- 6.4 A Medal Series will be sailed if five or more Opening Series races have been completed over a minimum of two days on which racing took place. Otherwise, the Opening Series will be extended.
- 6.5 To request correction of an alleged error in posted race or series results, a kiteboard may submit a scoring enquiry through the online platform.

## 7 NOT IN USE

---

## 8 COURSES AND RACING AREAS

---

- 8.1 The diagrams in Addendum 1 show the courses, the course designations, the approximate angles between legs, the order in which marks are to be passed, and the side on which each mark is to be left.
- 8.2 No later than the warning signal, the race committee starting vessel will display the course to be sailed.
- 8.3 If mark P is not set, it shall be disregarded.
- 8.4 Courses will not be shortened. This changes RRS 32.
- 8.5 Courses will not be changed. This changes RRS 33.
- 8.6 Addendum 4 shows the location of the venue and the course area.

## 9 STARTING AND FINISHING

---

- 9.1 To alert kiteboards that a race or sequence of races will begin soon, the starting line flag will be displayed with one sound at least five minutes before a warning signal is made.
- 9.2 The warning signal for each succeeding race will be made as soon as practicable.
- 9.3 The starting line will be between a staff displaying an orange flag on the race committee vessel and either:
  - a) the course side of the port-end inflatable mark, or
  - b) a staff displaying an orange flag on the race committee vessel on the port end.
- 9.4 A kiteboard starting later than 1 minute after her starting signal will be scored Did Not Start. This changes RRS A5.1 and A5.2
- 9.5 [NP] [DP] When a starting sequence is in progress, kiteboards whose warning signal has not been made shall avoid the starting area. The starting area is defined as an area 300 meters from the starting line and marks in all directions.
- 9.6 The finishing line will be between a staff displaying a blue flag and the course side of the nearby finishing mark.
- 9.7 [NP] [DP] Kiteboards that have finished shall sail clear of the finish area.

## 10 TIME LIMITS AND TARGET TIMES

---

- 10.1 Time limits and target times, in minutes, are as follows:

	Target Time	Race Time Limit	Mark 1 Time Limit	Finishing Window
<b>Opening Series Last Race</b>	12	24	6	6
<b>Medal Series Short Track Series</b>	7	14	4	3

- 10.2 If no kiteboard has passed Mark 1 within the Mark 1 time limit, the race will be abandoned.
- 10.3 Not meeting the target time will not be grounds for redress. This changes RRS 62.1(a).
- 10.4 Kiteboards not finishing within the Finish Time Window (time after the first kiteboard starts, sails the course and finishes) will be scored Did not Finish without a hearing. This changes RRS 35, A5.1 and A5.2

# 11 [NP] [DP] [SP] IDENTIFICATION AND ADVERTISING

---

- 11.1 When provided by the organizing authority, kiteboards or competitors shall carry, display or wear the following as instructed:
  - 11.1.1 Competition bibs for all competitors with an individually assigned competition number, worn as intended over all other clothing and equipment at any time when afloat;
  - 11.1.2 Event leader bibs, worn as intended over all other clothing and equipment at any time when afloat;
  - 11.1.3 Event advertising and Look of the event;
  - 11.1.4 Cameras, camera dummies, sound and other media equipment;
  - 11.1.5 Tracking, timing and electronic umpire system equipment.
- 11.2 Kiteboards shall not display advertising from previous events.

# 12 COMMUNICATION

---

- 12.1 The official notice board and event management system for requests is online here:  
<https://www.racingrulesofsailing.org/documents/7465/event>
- 12.1.1 Additional documents governing the event, except the LSI, will be published on the official notice board no later than two weeks before the on-site registration day of the event.
- 12.1.2 Complementary information may be posted on a notice board in the venue.
- 12.1.3 Informal communication may be sent through a telegram group at  
<https://t.me/+IWH0gxgl0x5jZTk0>
- 12.2 The location of the official flagpole will be described in the LSI.
- 12.3 When flag AP is displayed ashore, '1 minute' is replaced with 'not less than 20 minutes' in the race signal AP. This changes RRS Race Signals.
- 12.4 Flag K displayed afloat and ashore with two sounds means 'Races not started are postponed. The warning signal will be made not less than 5 minutes after removal (with one long sound) unless at that time the race is postponed again or abandoned.'
- 12.5 [NP] [DP] Flag G displayed ashore with two sounds means 'No kiteboard shall go afloat until this signal is removed (with one long sound). The warning signal will be made not less than 20 minutes after removal.'
- 12.6 [NP] [DP] Flag G displayed afloat means 'Kiteboards not racing shall return ashore as soon as reasonably possible.'
- 12.7 A signal displayed at the finish vessel applies only to the fleet that is finishing. This changes RRS Race Signals preamble.
- 12.8 While racing, except in an emergency or when using equipment provided by the race committee or Organising Authority, a kiteboard shall not make voice, radio or data transmissions and shall not receive voice, radio or data communication that is not available to all kiteboards. This restriction also applies to mobile telephones.

## 13 CHANGES TO NOTICE OF RACE AND SAILING INSTRUCTIONS

---

Any change to the NoR/SI and the LSI will be posted 30 minutes before it will take effect.

## 14 [NP] [DP] [SP] SAFETY REGULATIONS

---

- 14.1 When Flag G is displayed ashore, competitors returning ashore shall either personally check in at the official flag pole where the flag is displayed, or be reported as safe by their support persons.
- 14.2 Kiteboards not leaving the launching area for a scheduled race shall promptly notify the race committee.

## 15 [NP] [DP] CODE OF CONDUCT

---

- 15.1 Competitors and support persons shall:
  - 15.1.1 comply with any reasonable request from an event official. Non-compliance may be misconduct.
  - 15.1.2 not in any way interfere with the functionality of supplied media or timing equipment.
- 15.2 Kiteboards not racing shall remain clear of areas where kiteboards are racing and any official boat.

## 16 [NP] [DP] [SP] EQUIPMENT INSPECTION AND REPLACEMENT

---

- 16.1 Competitors shall submit a complete and correct Equipment Registration Form before 1900 on the day before the first scheduled equipment inspection through the online platform. Exceptions may be authorized by the Event Technical Committee.
- 16.2 Kiteboards shall be available for inspection from the time specified in the schedule.
- 16.3 Information on equipment to be inspected on each scheduled equipment inspection day will be published before 21:00 hours on the day before the first scheduled equipment inspection day, and after racing each day within the protest time limit. Competitors shall present the equipment to be inspected at the time published.
- 16.4 The fact that race officials may conduct inspections of a kiteboard does not reduce the responsibilities of each competitor set out in the rules.
- 16.5 Kiteboards are required to comply with RRS 78.1 and Event Equipment Rules from one hour before the first scheduled warning signal until the end of the protest time of the last race of the event.



- 16.6 Upon arriving ashore, a kiteboard may be instructed by a member of the Event Technical Committee to proceed immediately to a designated area for inspection.
- 16.7 Substitution of damaged or lost equipment will not be allowed unless authorized by the Event Technical Committee. Requests for substitution shall be made at the first reasonable opportunity through the online platform.
- 16.8 **ER 3.5.(a) applies: Kites shall only be replaced with kites of the same brand, make, and size.**

## 17 INTERNATIONAL JURY AND TECHNICAL COMMITTEE

---

- 17.1 An international jury will be appointed in accordance with RRS 91(b). Its decisions will be final as provided in RRS 70.5.
- 17.2 An Event Technical Committee will be appointed in accordance with RRS 92.1.

## 18 HEARING REQUESTS AND PENALTIES

---

- 18.1 Hearing request forms are available through the online platform. Protests and requests for redress or reopening shall be submitted before the appropriate time limit.
- 18.2 The protest time limits will be described in the LSI.
- 18.3 Notices will be posted within 15 minutes of the protest time limit to inform competitors of hearings in which they are parties or named as witnesses. Hearings will be held beginning at the time and location posted. Hearings may be scheduled to begin up to 15 minutes before the end of the protest time limit.
- 18.4 Penalties for breaches of the ER, STR, AMR, RRS 50, RRS 78.1, class rules, or rules in the NoR and SIs marked [DP], should the case go to a hearing, are at the discretion of the protest committee.
- 18.5 For breaches of NoR/SI marked [SP], breaches of ER 2.3 and 2.4, or breaches of Class Rules B.5, C.3.2, C.4, C.6.2, C.7.3, C.7.4, C.8.4, C.10.2, and C.10.4, the race committee or technical committee may apply a standard penalty without a hearing to the race(s) closest in time to the incident. The scores of other kiteboards shall not be changed; therefore, two kiteboards may receive the same score. However, the race committee or technical committee may protest a kiteboard when they consider the standard penalty to be inappropriate. A kiteboard that has been penalized with a standard penalty can neither be protested for the same incident by another kiteboard nor can another kiteboard request redress for this race committee or technical committee action. This changes RRS 60.1, 63.1 and RRS A5.
- 18.6 A kiteboard may not protest a kiteboard for non-compliance with building specifications. The protest committee may refuse to hold a hearing when a kiteboard protests based on this rule. This changes RRS 60.1(a) and 63.1.
- 18.7 RRS 62.2(a) and 66.2(a) also apply on the last day of Q2 and Q3.

## 19 [DP] SUPPORT TEAMS INCLUDING SUPPORT TEAM VESSELS

---

- 19.1 By registering as a support person, each such person agrees to be governed by the rules.
- 19.2 A support team vessel includes any vessel that is under the control or direction of a support person as defined in the RRS and also includes any person gathering data that may be used by a team or competitor.
- 19.2 Support team vessels shall display the 3-letter code of their World Sailing MNA at all times while afloat clearly visible from both sides of the vessel. The minimum height for the letters shall be 200 mm.
- 19.3 Limitations of equipment that may be carried and mandatory equipment that shall be carried on support team vessels will be detailed in the STR.
- 19.4 Except when participating in rescue operations as requested or instructed by the race committee, support boats shall remain in the area defined in Addendum 2 from the time of the preparatory signal for the first group to start until all kiteboards have finished or retired or the race committee signals a postponement, general recall or abandonment.
- 19.5 A MNA, competitor, or support person shall not leave any device, piece of equipment, buoy, marker or similar item permanently in the water.

## 20 [NP] [DP] PRIZES, VICTORY CEREMONY

---

- 20.1 Trophies will be awarded to the top 3 competitors in each event.
- 20.2 Medals will be awarded to the top 10 competitors in each event.
- 20.3 If a competitor who finished in the top 3 leaves the event before the conclusion of the victory ceremony or, if other competitor, leaves the venue before the day before the victory ceremony, the IKA may exclude that competitor from the next Championship or impose any similar sanction.
- 20.4 The OA may reduce or remove a prize in the case of misconduct or refusal to comply with any reasonable request, including attendance at official functions.

## 21 [NP] [DP] INSURANCE

---

- 21.1 Each 'person in charge' (see RRS 46) shall hold a valid insurance certificate showing proof of third-party liability coverage of at least 2.0 million EUR or equivalent per incident.
- 21.2 Each support vessel shall have valid insurance including third party liability coverage of at least 2.0 million EUR (or equivalent) per incident.
- 21.3 The Organizing Authority is not responsible for verifying the status or validity of certificates.

## 22 DOPING CONTROL

---

Competitors are reminded of the World Sailing rules and regulations concerning the use of banned methods and substances, which are contained in the World Sailing Anti-Doping Code. Drug testing may take place during this event.

## 23 RISK STATEMENT

---

- 23.1. In cases of force majeure or on grounds of administrative orders or for safety reasons, the organizing authority is entitled to make changes in the realization of the event or to cancel the event. This does not constitute any liability by the organizer towards the participant, if the reasons for the changes or the cancellation do not result from a wilful or grossly negligent behaviour of the organizer.
- 23.2. In case of a violation of obligations that do not constitute primary or material contractual duties (cardinal obligations), the liability of the organizer for financial and property damages incurred by the participant during or in connection with the participation in the event and resulting from a conduct of the organizer, the involved classes and their representatives, servants or agents (including but not limited to race committee, protest committee and technical committee), is restricted to damages that were caused wilfully or grossly negligent. When a violation of cardinal obligations occurs due to minor negligence, the liability of the organizer is limited to foreseeable, typical damages.
- 23.3. Competitors and support persons participate in the event entirely at their own risk and they are reminded of the provisions of RRS 3, Decision to Race. Kiteboarding is by its nature an unpredictable sport and therefore involves an element of risk. By taking part in the event, each competitor agrees and acknowledges that:
- They acknowledge that there are risks involved in the Event. They fully realise the dangers of participating in the Event, and fully assume the risks associated with their participation and their wellbeing and safety during and after the Event.
  - They understand and acknowledge that the Event organisers (including all officials and event volunteers) provide no warranties, regarding their wellbeing and safety.
  - They acknowledge that participating in this event may involve a test of a person's physical and mental limits and carries with it the potential for death, serious injury, and property loss. The risks include, but are not limited to, those caused by the elements, facilities, temperature, weather, condition of participants, equipment, vehicular traffic, lack of hydration, and actions of other people including, but not limited to, participants, volunteers, officials, and/or producers of the event.
  - They agree that to the extent permissible by law, World Sailing, the International Kiteboarding Association, their classes, the event organisers (including all officials and event volunteers), IKA, the sponsors and other parties associated with the Event, have no liability to them whatsoever for any direct or indirect loss, (including, but not limited to injury or death) sustained by them during or in any way related to their participation in the Event.
  - They WAIVE, RELEASE, AND DISCHARGE from any and all liability, including but not limited to, liability arising from the negligence or fault of the entities or persons released, for their death, disability, personal injury, property damage, property theft, or actions of any kind which may hereafter occur to them including their traveling to and from this event, THE FOLLOWING ENTITIES OR PERSONS: World Sailing, The International Kiteboarding Association, their classes, the event organisers (including all officials and event volunteers), IKA, the sponsors and other parties associated with

- the Event, employees, volunteers, representatives, and agents, and the event holders, sponsors, and volunteers;
- They INDEMNIFY, HOLD HARMLESS, AND PROMISE NOT TO SUE the entities or persons mentioned in the above paragraphs from any and all liabilities or claims made as a result of participation in this event, whether caused by the negligence of release or otherwise.
  - They have taken medical advice on any pre-existing medical conditions and confirm that it is medically safe for them to participate in the Event.
  - They are responsible for the safety of themselves, their equipment and their other property at any time.
  - They are satisfied that their equipment is in good order, equipped to compete in the event and they are fit to participate;
  - They accept responsibility for any injury, damage or loss to the extent caused by their own actions or omissions;
  - They consent to receive medical treatment which may be deemed advisable in the event of injury, accident, and/or illness during this event.
  - They acknowledge that the provision of a race management and rescue team, judges, umpires and other officials and volunteers by the organizer does not relieve them of their own responsibilities;
  - They acknowledge that the provision of rescue craft cover is limited to such assistance, particularly in extreme weather conditions, as can be practically provided in the circumstances.
  - Participants are made aware that small unmanned aircrafts (drones) may fly over them and operate in close vicinity to them.

## 24 [NP] [DP] [SP] MEDIA RIGHTS

---

- 24.1 By participating in the event, competitors and support persons automatically grant to the organizing authority, IKA, all involved classes, their sponsors and World Sailing, the right in perpetuity to make, use and show, from time to time at their discretion, any motion pictures and live, taped or filmed television and other reproductions of the athlete during and after the period of the event without compensation.
- 24.2 Competitors shall comply with the Competitor Media Guide (AMR). The AMR will include further information on television production, press conferences, interviews, mixed zones, and promotion of the event.

## 25 DATA PROTECTION AND PRIVACY

---

With registration the competitor or support person agrees on data usage as defined in this data protection and privacy notice. See Privacy Notice in Addendum 7.

Reference is made to data protection of personal information and data. Any personal information and data given to the organizers will be used only as follows:

- (a) All data regarding participating athletes, support persons and their kiteboard will be processed and archived for the purpose of this event and events of similar nature that might be of interest to the participant.

- (b) Personal information contains the participant's real name, date of birth, home club, boat type, boat number, address data, mobile phone, email address and emergency contact information. In particular, results, calculatory and visual analyses, position monitoring and race analyses will be published with reference to the competitors' names.

## FURTHER INFORMATION (NOT PART OF THE NOTICE OF RACE)

---

### Contacts

Organization	Name / Surname	Email
LOA	Robert LHEZ	hka83@orange.fr
IKA	Markus Schwendtner	markus@kiteclasses.org

### Site Information

Plage des Vieux Salins, 83400 Port Pothuau

### Competitors' lounge

Plage des Vieux Salins, 83400 Port Pothuau

### Medical services and facilities

Plage des Vieux Salins, 83400 Port Pothuau

### Accommodation and travel

<https://www.hyeres-tourisme.com/>

### Transport

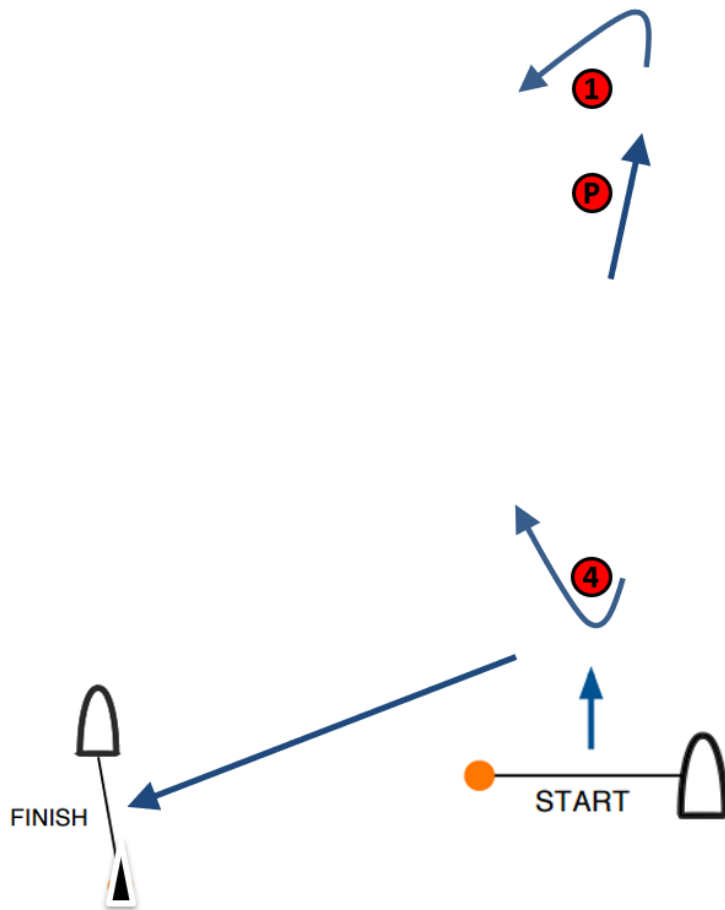
Train <https://www.sncf-connect.com/en-en>

Local bus service: <https://www.reseaumistral.com/se-deplacer/lignes>

# ADDENDUM 1

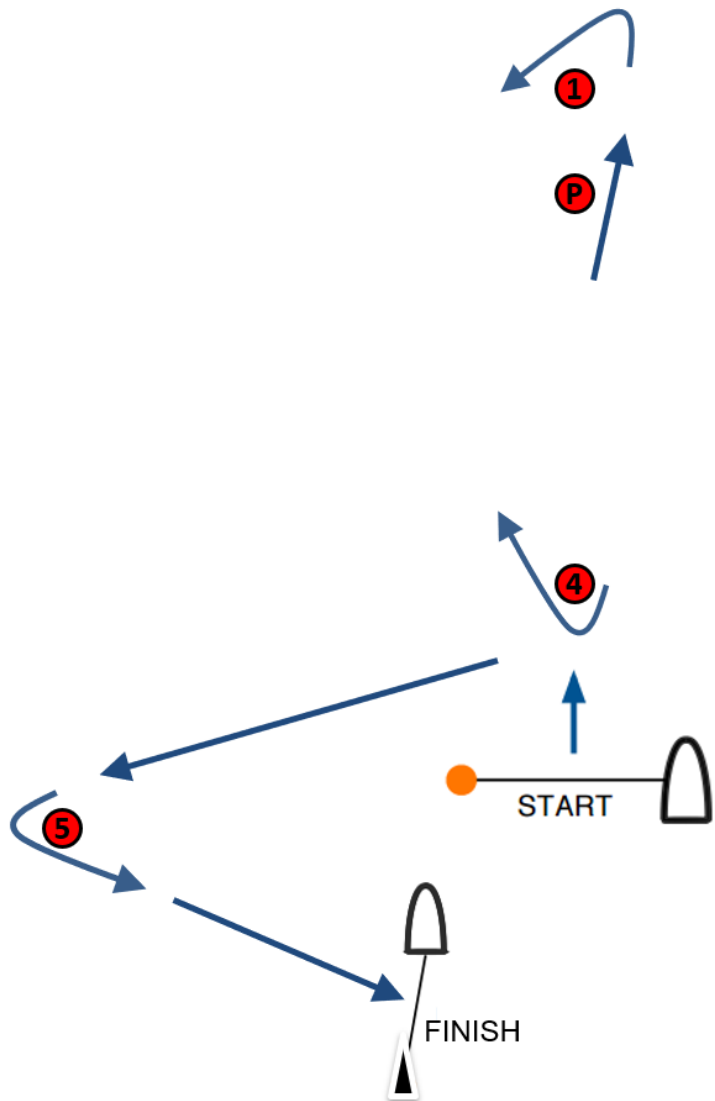
## COURSE DIAGRAMS

---



- X 1: Start – Pp – 1p – Pp – 4s – Finish**
- X 2: Start – Pp – 1p – Pp – 4s – Pp – 1p – Pp – 4s – Finish**
- X 3: Start – Pp – 1p – Pp – 4s – Pp – 1p – Pp – 4s – Pp – 1p – Pp – 4s – Finish**

All distances and course angles are approximate.

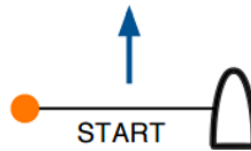
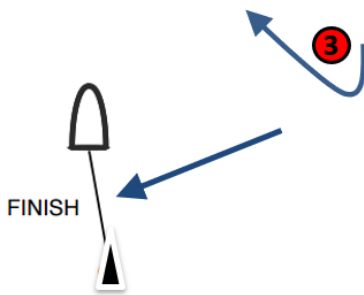
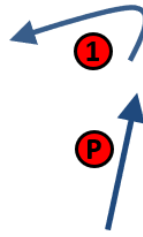


**XS 1: Start – Pp – 1p – Pp – 4s – 5p – Finish**

**XS 2: Start – Pp – 1p – Pp – 4s – Pp – 1p – Pp – 4s – 5p – Finish**

**XS 3: Start – Pp – 1p – Pp – 4s – Pp – 1p – Pp – 4s – Pp – 1p – Pp – 4s – 5p – Finish**

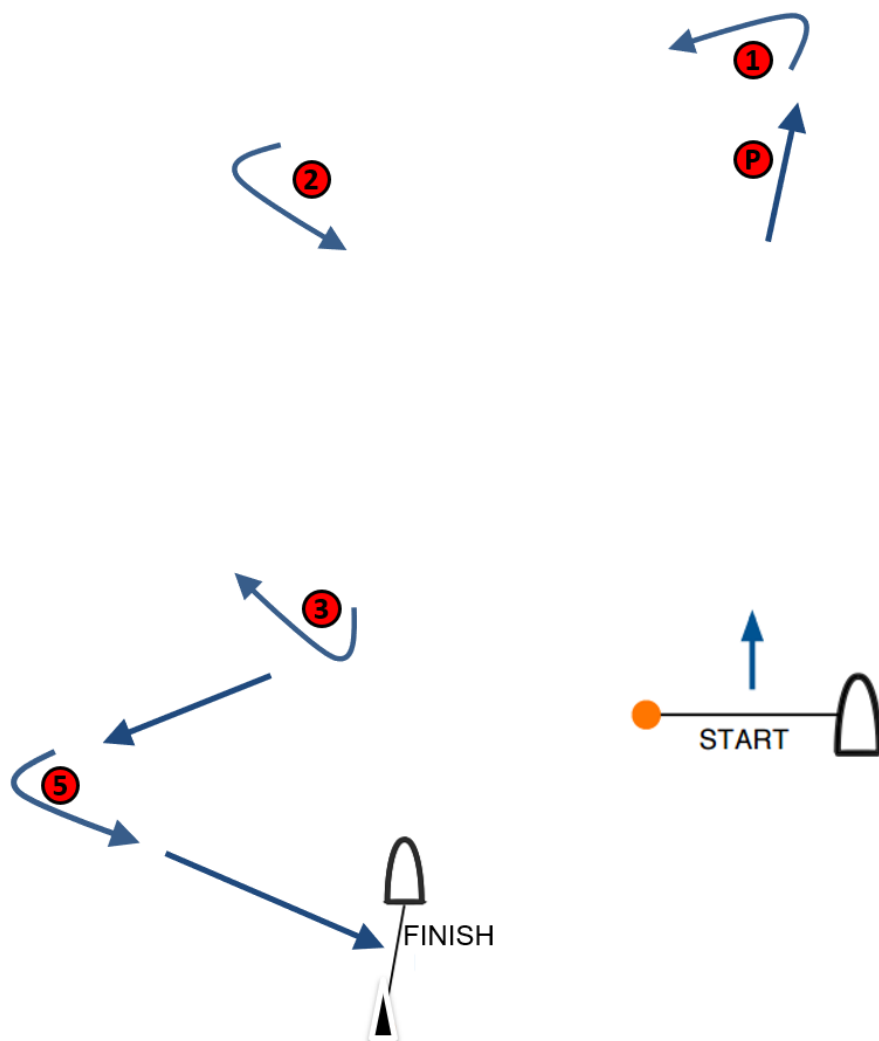
All distances and course angles are approximate.



- B 1: Start – Pp – 1p – 2p – 3s – Finish**
- B 2: Start – Pp – 1p – 2p – 3s – 2p – 3s – Finish**
- B 3: Start – Pp – 1p – 2p – 3s – 2p – 3s – 2p – 3s – Finish**

All distances and course angles are approximate.





**BS 1: Start – Pp – 1p – 2p – 3s – 5p – Finish**

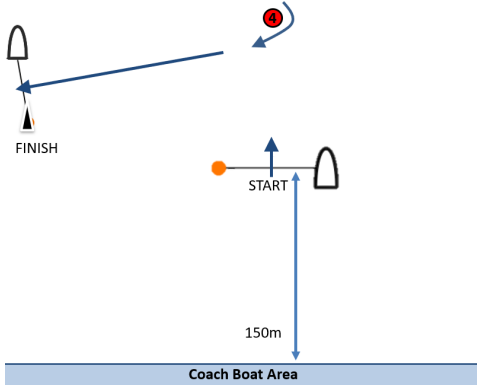
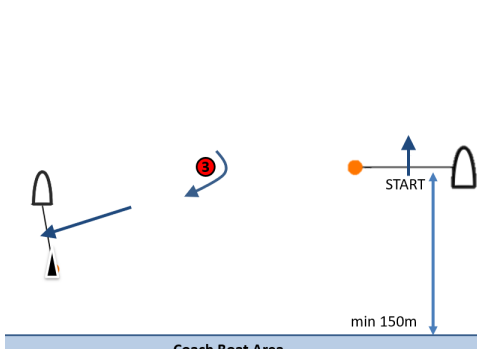
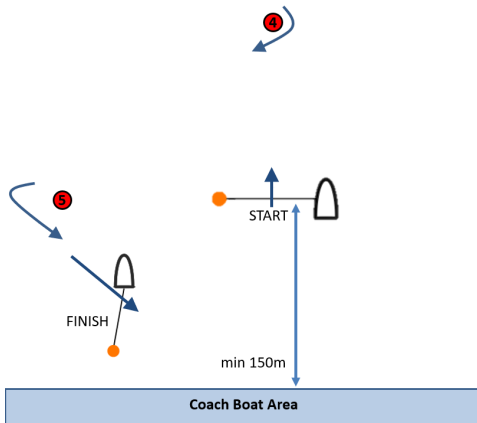
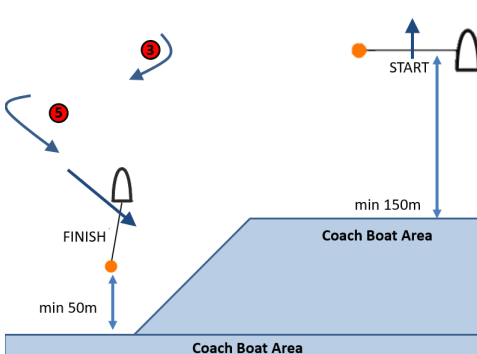
**BS 2: Start – Pp – 1p – 2p – 3s – 2p – 3s – 5p – Finish**

**BS 3: Start – Pp – 1p – 2p – 3s – 2p – 3s – 2p – 3s – 5p – Finish**

All distances and course angles are approximate.

# ADDENDUM 2

## COURSE AREA LIMITATIONS

<b>X</b>	 <p>150m</p> <p>Coach Boat Area</p>
<b>B</b>	 <p>min 150m</p> <p>Coach Boat Area</p>
<b>XS</b>	 <p>min 150m</p> <p>Coach Boat Area</p>
<b>BS</b>	 <p>min 50m</p> <p>min 150m</p> <p>Coach Boat Area</p> <p>Coach Boat Area</p>



# **ADDENDUM 4**

## **COURSE AREA AND VENUE MAP**

---

To be provided later

# ADDENDUM 5

## OPENING SERIES / MEDAL SERIES

---

### 1 Opening Series

1.1 The Opening Series may be divided into phases Q1, Q2 and Q3.

### 1.2 Opening Series – Phases Q1 and Q2

- a) Phase Q1: On the first day of racing, kiteboards will be assigned to fleets yellow, blue, red etc., of, as nearly as possible, equal size and ability. Assignments will be made by the race committee and will be posted at least 30 minutes before the first warning signal is made. Those assignments will not be grounds for redress. This changes RRS 62.1(a).
- b) Phase Q2: Kiteboards will be reassigned to fleets after each day of racing. If all fleets have completed the same number of races, kiteboards will be reassigned on the basis of their ranks in the series. If all fleets have not completed the same number of races, the series scores for reassignment will be calculated for those races, numbered in order of completion, completed by all fleets. For three fleets, and similarly for any other number, reassignments will be made as follows:
- |         |        |
|---------|--------|
| First   | Yellow |
| Second  | Blue   |
| Third   | Red    |
| Forth   | Red    |
| Fifth   | Blue   |
| Sixth   | Yellow |
| Seventh | Yellow |
- etc.
- c) Reassignments of fleets will be based on the ranking available at 2100 on the day before they take effect, regardless of pending hearings.
- d) If all fleets have not completed the same number of races by the end of a day, the fleets with fewer races will continue racing the following day until all fleets have completed the same number of races. All kiteboards will thereafter race in the new fleets.
- e) If at the end of phase Q2 some kiteboards have more race scores than others, scores for the most recent races will be excluded so that all kiteboards have the same number of race scores.
- f) For phases Q1 and Q2, RRS A5.2 is changed so that the scores are based on the number of kiteboards assigned to the biggest fleet.

### 1.3 Opening Series – phase Q3

If five or more races are completed by each fleet at the end of phase Q2:

- a) Kiteboards will be assigned to fleets gold, silver, bronze etc., based on their ranking after phase Q2. There will be the same number of fleets in phase Q3 as there were in phases Q1 and Q2. Q3 fleets will have, as nearly as possible, equal size with the following limitations:
- Gold Fleet: max 25 kiteboards.  
Silver Fleet: max 30 kiteboards (or remaining kiteboards if two fleets).  
Bronze Fleet (if applicable): remaining kiteboards.  
Kiteboards with the best phase Q2 ranks will race all phase Q3 races in fleet gold, kiteboards with the next-best phase Q2 ranking will race in fleet silver, etc.

- b) Any recalculation of phase Q2 rankings after kiteboards have been assigned to phase Q3 fleets will not affect the assignments except that a redress decision may promote a kiteboard to a higher fleet.

- 1.4 A kiteboard's Opening Series score will be the total of her race scores except that:
- when from 4 to 6 races have been completed her worst score will be excluded;
  - when from 7 to 10 races have been completed her two worst scores will be excluded;
  - when 11 or more races have been completed her three worst scores will be excluded;
- however, not more than one score from phase Q3 may be excluded when less than five Q3 races have been completed, and not more than two scores from phase Q3 may be excluded when five or more Q3 races have been completed.

This changes RRS A2.

- 1.5 For the Opening Series overall standings, kiteboards will be ranked in the order of the kiteboards competing in fleets gold, silver, bronze, etc. This may not apply to a kiteboard disqualified under RRS 6 or 69.

## 2 Medal Series

- 2.1 The Medal Series may be divided into Semi Finals and Finals.

- 2.2 The first-ranked kiteboard in the Opening Series will qualify to the Finals carrying forward two race-wins.

- 2.3 The second-ranked kiteboard in the Opening Series will qualify to the Finals carrying forward one race-win.

### 2.4 Semi Finals

- a) Kiteboards ranked 3 to 10 overall in the Opening Series will be assigned to Semi Finals, carrying forward race-wins as follows:

Semi Final 1		Semi Final 2	
Opening Series Position	Race-Wins	Opening Series Position	Race-Wins
3	2	4	2
6	1	5	1
7	0	8	0
10	0	9	0

- b) Each Semi Final will continue until one kiteboard collects three race-wins. The kiteboard with the lowest race score collects a race-win.
- c) Kiteboards in each Semi Final will be ranked in order of the number of race-wins, from highest to lowest.
- d) If there is a tie in race-wins between two or more kiteboards, they will be ranked in the order of their finishing positions in the last race. Any remaining ties shall be broken by using the tied kiteboards' scores in the next-to-last semi-final race and so on. If a tie remains, they will be ranked in order of their opening series ranking. This changes RRS A8
- e) The winner of each Semi Final will qualify to the Finals, carrying forward 0 race-wins.
- f) The race committee may cancel the Semi Finals if the completion of the Medal Series is in jeopardy, or when there are less than 10 entries in an event. In such case, competitors ranked 3 and 4 in the Opening Series will qualify to the Finals.

### 2.5 Finals

- a) The Finals will continue until one kiteboard collects three race-wins. The kiteboard with the lowest race score collects a race-win.
- b) Kiteboards in the Finals will be ranked in order of the number of race-wins, from highest to lowest.
- c) If there is a tie in race-wins between two or more kiteboards, they will be ranked in the order of their finishing positions in the last race. Any remaining ties shall be

broken by using the tied kiteboards' scores in the next-to-last finals race and so on. If a tie remains, they will be ranked in order of their opening series ranking.

This changes RRS A8

**2.6 Scores in the Medal Series determined by the race committee.**

A kiteboard that came to the starting area but did not start or did not finish will be scored points for the finishing place one more than the number of kiteboards that finished and were not disqualified or retired.

This changes RRS A5.

**3 Overall Standings.**

This may not apply to a kiteboard disqualified under RRS 6 or 69.

3.1 Kiteboards qualified for the Finals will be ranked in places 1-4, even if the Finals are not completed.

3.2 Remaining kiteboards in the Semi Finals will be ranked in places 5 to 10 according to their scores in the Semi Final flights as follows:

- Competitors ranked 2<sup>nd</sup> in each Semi Final will be ranked in places 5 and 6 in order of their Opening Series ranking.
- Competitors ranked 3<sup>rd</sup> in each Semi Final will be ranked in places 7 and 8 in order of their Opening Series ranking.
- Competitors ranked 4<sup>th</sup> in each Semi Final will be ranked in places 9 and 10 in order of their Opening Series ranking.

If the Semi Finals are not completed, kiteboards will be ranked in order of their Opening Series ranking.

3.3 Kiteboards not qualified to sail in the Medal Series will sail a Last Race. The score for a kiteboard in the Last Race of the remaining gold fleet is its finishing position + 10 points.

3.4 Kiteboards not qualified for the Medal Series will be ranked from place 11 and on, according to their Opening Series score plus their Last Race score. This changes RRS A2.

3.5 Kiteboards in fleet gold will be ranked in front of kiteboards competing in subsequent fleets etc.

## **ADDENDUM 6**

### **NOT IN USE**

---

# ADDENDUM 7

## PRIVACY NOTICE

---

The International Kiteboarding Association takes the security and privacy of personal information very seriously. This Privacy Notice set out the basis on which any personal data obtained as a result of participating in this event will be processed. All processing will be in accordance with the applicable data protection legislation for the purposes for which the information was submitted. If and insofar as the IKA and the local organizing authority of an event records, processes and/or stores any data which is subject to data protection laws, the compliance with all corresponding laws and regulations is incumbent upon the local organizing authority.

### 1. About this Privacy Notice

- This is the privacy notice (“**Notice**”) of the International Kiteboarding Association, Avenue des Alpes 62, 1820 Montreux, Switzerland (“**IKA**”, “**we**”, “**us**”, “**our**”).
- This policy explains when and why we collect personal information about event participants, how we use it and how we keep it secure and your rights in relation to it. We will post any changes we may make to this Notice on our Website or communicate them to you by email.
- We may collect, use and store your personal data, as described in this Privacy Notice and as described when we collect data from you.
- We reserve the right to amend this Privacy Notice from time to time without prior notice. You are advised to check our websites regularly for any amendments (but amendments will not be made retrospectively).
- We will always comply with the General Data Protection Regulation (GDPR) when dealing with your personal data. For the purposes of the GDPR, we will be the “controller” of all personal data we hold about you.
- The Notice currently in place dates of 05<sup>th</sup> December 2018.

### 2. What personal data do we collect from you?

- We collect personal data that you provide to us in relation to registering for and participating in IKA events, such as by filling out a registration form or signing up for an email distribution list. Such personal data may consist of:
  - contact information (such as name, physical address, email address, and mobile or other telephone number);
  - gender, age/date of birth
  - World Sailor ID, sponsor information
  - emergency contact information
- Any information that you may provide voluntarily by filling in forms for your registration to an event, or by otherwise contacting IKA.

### 3. How we protect your personal data

- In order to manage the participation in this event and other events, it may sometimes be necessary for us to transfer your personal data outside the European Union. However we will only do so in accordance with the GDPR. That is most likely to involve either approval by the EU Commission that the country to which your data is being transferred provides adequate protection for personal data or on the basis of standard clauses, required by the EU, with the organisation to which we are transferring your data.
- We have implemented generally accepted standards of technology and operational security in order to protect personal data from loss, misuse, or unauthorised alteration or destruction.
- Please note however that where you are transmitting information to us over the internet this can never be guaranteed to be 100% secure.
- For any payments which we take from you online we will use a recognised online secure payment system.
- We will notify you promptly in the event of any breach of your personal data which might expose you to serious risk.



#### **4. For which purposes do we process your personal data?**

- We process your personal data for the following purposes:
  - If you fill out a registration or contact form providing your name, email-address, telephone number, etc., we use your data for answering your questions, sending you information or performing other tasks you ask us to.
  - If you register for an event, then we process the data required for your registration, for example your name, address, email-address, profile picture, etc. to allow your registration and processing of your event results.
  - We process your personal data also to comply with and enforce applicable legal requirements, our Terms and Condition for Use, relevant industry standards, contractual obligations and our policies.
  - To provide results, calculatory and visual analyses, position monitoring and race analyses will be published with reference to your names and data.
  - To inform you about upcoming events, event results, and general information related to the activities of the IKA.

#### **5. To whom do we disclose and transfer your personal data?**

- We will never sell your personal data. We will not share your personal data with any third parties without your prior consent (which you are free to withhold) except where we are required to do so by law or as set out in the paragraph above or in paragraphs 5.2 and 5.3 below.
- We may pass your personal data to third parties who are service providers, agents and subcontractors to us for the purposes of completing tasks and providing services to you on our behalf (e.g. managing protests, calculating results and providing tracking information and analysis, media productions). We do this for the purpose of our legitimate interests in operating this event and for performing our responsibilities with you. However, we disclose only the personal data that is necessary for the third party to deliver the service and we require them to keep your information secure and not to use it for their own purposes. It is possible that third parties may themselves engage others (subprocessors) to process your data. Where this is the case third parties will be required to have arrangements with their sub-processor(s) that ensure your information is kept secure and not used for their own purposes.
- We may disclose your personal data to the following recipients or categories of recipients acting on our behalf and/or as partners (processors), limited to the purpose of the execution of their obligations, which are contractually bound to adhere to an adequate level of data protection when processing your personal data:
  - Trac Trac
  - Manage2Sail
  - Racingrulesofsailing.org
  - Paypal
  - Stripe
  - World Sailing and its Member National Authorities
  - National and Continental Associations
- We may disclose your personal data if we are under a duty to disclose or share your personal data in order to comply with any legal obligation, or in order to enforce or apply our terms of use and other agreements; or to protect the rights, property, or safety of IKA. This includes exchanging data with other companies and organizations for the purposes of fraud protection and credit risk reduction.
- We may internationally transfer your personal data, including to countries that are not considered providing an adequate level of data protection by the relevant regulatory bodies, for example to countries not considered by the European Commission or the Swiss Federal Data Protection and Information Commissioner to be providing such level. In such case, we ensure the adequate protection of your personal data by having the recipients adhere to binding contractual obligations in accordance with applicable standards approved by the relevant regulatory bodies or by relying on other safeguards, such as self-certifications, approved by the relevant regulatory bodies.

## **6. For how long do we process your personal data?**

We process your personal data as long as you are a participant of the event and for as long afterwards as it is in the IKAs' legitimate interest to do so in order to inform you about future events and event results, or for as long as is necessary to comply with our legal obligations. We will review your personal data every year to establish whether we are still entitled to process it. If we decide that we are not entitled to do so, we will stop processing your personal data except that we will retain your personal data in an archived form in order to be able to comply with future legal obligations e.g. compliance with tax requirements and exemptions, and the establishment, exercise or defence of legal claims.

## **7. When do we require your personal data?**

If you wish to participate in an IKA event, then we are required to obtain from you certain personal data to allow us to create and administrate it, for example, your name, address, or contact information. Should you decide not to provide us the required information, you may not be able to participate in this event.

## **8. What are your rights?**

- You have the right:
  - to request from us access to and rectification or deletion of your personal data;
  - to request us to restrict the processing of your personal data, in particular to object to the processing of your personal data for direct marketing purposes; and
  - to request from us to provide you or any person or entity you appointed with a digital file of your personal data (data portability).
- You may withdraw your consent that allows us to process your personal data for the indicated purposes at any time.
- To exercise the above rights, you may contact us as indicated below.
- You also have the right to lodge a complaint with the competent authority.

## **9. How can you contact us?**

For any questions or to exercise your rights, you may contact us as follows:

Postal address: International Kiteboarding Association, Rue du Midi 4b, 1800 Vevey, Switzerland

Telephone number: +306982083098

Email-address: [info@internationalkiteboarding.org](mailto:info@internationalkiteboarding.org)