

**Aviso
Notice**

Fecha Date	12	2022	Hora Time	12	00	Número Number	1
---------------	----	------	--------------	----	----	------------------	---

De From	ORGANIZING COMMITTEE/COMITE ORGANIZADOR	A To	PARTICIPANTS
------------	---	---------	--------------

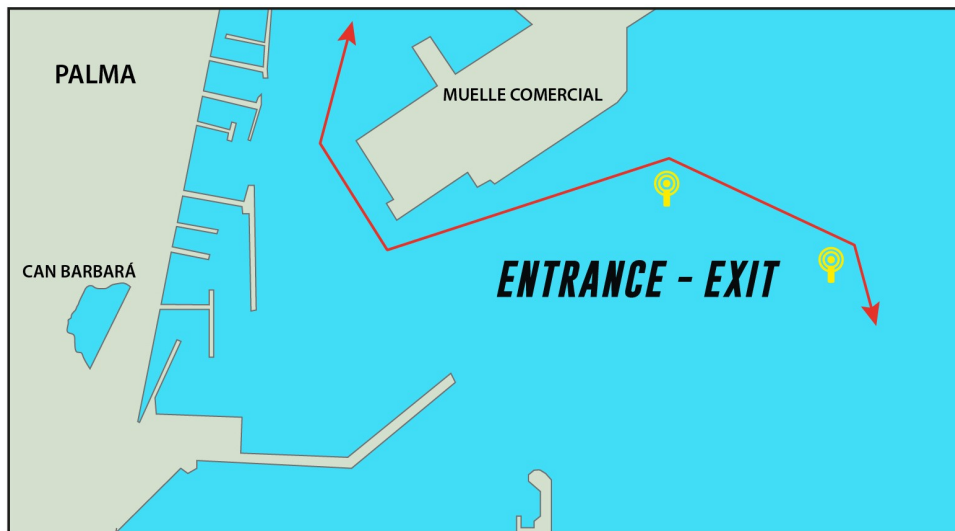
SAILING IN AND OUT OF THE PORT OF PALMA

We remind you that in accordance with BOIB num 22 , 14th of February, chapter Reglas Generales de Navegación y Seguridad Maritima”, all the dinghy sailing boats that come in or out the port and do not a mechanical propulsion system of their own, will have to be towed in and out of the port with their support boat, if any. The non-compliance of this safety and sailing regulation, will be sanctioned in accordance to RDL 2/2011 of the 5th September, by the State Port and Merchant Marine bylaws.

To enter and exit the port of Palma and with the intention to not interfere with the commercial traffic, the Palma Pilots, have requested the participants their maximum collaboration and attention.

For this purpose, an entrance and exit channel has been established for all the participants, (see diagram)

We also inform you that the entrance and exit channel will be surveyed by organization and pilot Boats. We kindly request you to follow their instructions.



Nombre
Name

ORGANIZING COMMITTEE/COMITE ORGANIZADOR

Firma
Signature

