

**2019 RS:X WINDSURFING YOUTH WORLD CHAMPIONSHIPS**  
*including the 2019 Saint Petersburg RS:X U17 Windsurfing Championships*

*August 4<sup>th</sup> – 10<sup>th</sup> 2019, Saint Petersburg, Russia*



# SAILING INSTRUCTIONS

## 1. RULES

---

- 1.1 The regatta will be governed by the rules as defined in The Racing Rules of Sailing (RRS).
- 1.2 No National prescriptions will apply.
- 1.3 Competitors shall only use the Mark 3 or Mark 2 or Mark 1 fin and Mark 2 centreboard. This changes the RS:X Class Rule C.7.1(d)(ii).
- 1.4 The following Class Rules shall be deleted: C.1.2(a), C.6.5(b), C.7.4(b) and C.9.2(b).
- 1.5 In all rules governing this regatta:
  - 1.5.1 [SP] denotes a rule for which a standard penalty may be applied by the race committee without a hearing (this changes RRS A5) or a discretionary penalty applied by the International Jury with a hearing;
  - 1.5.2 [NP] denotes a rule that shall not be grounds for protests by a board. This changes RRS 60.1(a).
  - 1.5.3 [DP] denotes a rule for which the penalty is applied according to the RRS Introduction - Notation
- 1.6 Identification on Sails: a '-' may be applied between the national letters and sail number. This changes RRS Appendix B9.
- 1.7 If there is a conflict between languages the English text will take precedence.
- 1.8 Decisions on Protests Concerning Class Rules: RRS 64.3(a) shall not apply.
- 1.9 For Medal Races, World Sailing Addendum Q, *Umpired Fleet Racing*, will apply and takes precedence over any conflicting instructions.
- 1.10 Decisions of the International Jury will be final as provided in RRS 70.5.

## 2. [DP] [NP] ADDITIONAL IDENTIFICATION

---

- 2.1 When the Organizing Authority supplies the event bib vests, the competitors shall wear it while racing.
- 2.2 When the Organizing Authority supplies the ranking coloured bib vests for event leaders (1<sup>st</sup>, 2<sup>nd</sup>, 3<sup>rd</sup>), the competitors shall wear it when they are racing for that day.
- 2.3 Bib vest shall be worn outside other clothing while racing. Competitors shall not deliberately cut or tear them.
- 2.4 When the Organizing Authority supplies the coloured fleet ribbons (see SI 9 – Fleets, Class Flags & Colours), the competitors shall apply it to the end of the second top batten of the sail. This meets the division identification requirements of CR C.9.2(b).

### 3. CAMERAS AND ELECTRONIC EQUIPMENT

- 3.1 **[DP] [NP]** Competitors may be required to carry on their boards cameras, sound equipment or positioning equipment as specified by the Organising Authority. Those competitors competing in the same race that are not issued with such equipment shall carry an equivalent weight in the same position as issued by the Organising Authority.
- 3.2 **[NP]** Personal Cameras and their attachments may be carried provided that they do not affect the function or use of any existing part of the board or associated equipment.
- 3.2.1 Any footage or recording is to be made available to the RS:X Class Association upon request.
- 3.3 The use of motion pictures by the LOA and the RS:X Class Association as referred to in Notice of Race 21.1 also relates to video taken by competitors.

### 4. NOTICES TO COMPETITORS

- 4.1 Notices to competitors will be posted on the Official Notice Board.

### 5. CHANGES TO SAILING INSTRUCTIONS

- 5.1 Any change to the Sailing Instructions is subject to the approval of the Class Course Representative and will be posted no later than two hours before the warning signal of the race on the day it will take effect, except that any change to the schedule of races will be posted by 2000 on the day before it will take effect.

### 6. SIGNALS MADE ASHORE

- 6.1 Signals made ashore will be displayed at the Official Flagpole.
- 6.2 When a visual signal is displayed over a fleet flag, the signal applies to that fleet only. This changes the Race Signals preamble.
- 6.3 **[DP] [NP]** When Flag AP is displayed ashore competitors shall not go afloat. '1 minute' is replaced with 'not less than 40 minutes' in the race signal AP. This changes RRS Race Signals.
- 6.4 **[DP] [NP]** On the last day of racing and if Final Races are scheduled, boards shall not launch until the display of:

<b>Race</b>	<b>Signal</b>
Men's Final Races	Flag D over Men's Gold Fleet Class Flag
Women's Final Races	Flag D over Women's Fleet Class Flag
Last Race	Flag D alone

### 7. FORMAT OF RACING

- 7.1 The regatta consists of an Opening Series and a Medal Race. If the event is split into fleets, the Opening Series will be divided into a Qualifying Series and a Final Series.
- 7.2 Men and Women shall start separately but will sail on the same course area.
- 7.3 Any other division(s) referred to in the appropriate Notice of Race will race in the fleets of the main event. When racing is to be in more than one fleet, the number of fleets and the assignment of competitors to fleets are at the discretion of the Class Course Representative. This is not ground for redress. This changes RRS 62.1(a).
- 7.4 The number of fleets is likely to be based on the number of entries as follows:

<b>Entries</b>	<b>Fleets</b>
< 50	1
51-60	1 or 2
> 60	2

## 7.5 Qualifying Series

- 7.5.1 Boards will be assigned to Yellow and Blue fleets of, as nearly as possible, equal size and ability according to their ranking in the 2018 RS:X Youth World Championships, then their ranking in the 2019 RS:X Youth European Championships and finally in random order. Those assignments will be posted by 2100 on the day before the first scheduled race.
- 7.5.2 Boards will be reassigned to fleets after each day of racing, except if on the first day of racing fewer than two races are completed by both fleets. If all fleets have completed the same number of races, boards will be reassigned on the basis of their ranks in the series. If all fleets have not completed the same number of races, the series score for reassignment will be calculated for those races, numbered in order of completion, completed by both fleets. Reassignments will be made as follows:

<b>Rank in Series</b>	<b>Fleet Assignment</b>
First	Yellow
Second	Blue
Third	Blue
Fourth	Yellow
Fifth	Yellow
Sixth	Blue

and so on. If two or more boards have a same rank, they will be entered in the left column in the order of fleets in SI 7.5.1.

- 7.5.3 In the case of an odd number of competitors, the last competitor to be assigned will race in Yellow fleet.
- 7.5.4 Fleet assignments will be based on the ranking available at 2100 that day regardless of protests or request for redress not yet decided.
- 7.5.5 If both fleets have not completed the same number of races by the end of a day, the fleets with fewer races will continue racing the following day until all fleets have completed the same number of races. All boards will thereafter race in the new fleets.

## 7.6 Final Series

- 7.6.1 Boards will be assigned to the Gold and Silver fleets on the basis of their ranks in the Qualifying Series (discards applied) but with no ties broken.
- 7.6.2 The fleet lists shall be posted at least 2 hours before the first scheduled warning signal of the first race of the Final Series.
- 7.6.3 The top 50% of sailors will race in Gold fleet, with the rest in Silver fleet, but at the break point, any competitors with the same score will race in Gold fleet. In the case of an odd number of competitors Gold fleet shall be larger than Silver fleet.
- 7.6.4 In Final Series there will be the same number (and approximate size) of fleets as in Qualifying Series
- 7.6.5 Any recalculation of Qualifying Series overall rankings after competitors have been assigned to Final Series fleets will not affect the assignments except that a redress decision may promote a competitor to a higher fleet.

## 7.7 Medal Race

- 7.7.1 At 2100 on the penultimate day the top ten competitors in the overall rankings of Opening Series will be assigned to sail in the Medal Race. The International Jury may extend this time limit.

## 8. SCHEDULE

### 8.1 Event Schedule:

<u>Date</u>	<u>Day</u>	<u>Times</u>	<u>Event</u>
August 4 <sup>th</sup> , 2019	Sunday	1000-1700 hrs	Registration & Equipment Check
August 5 <sup>th</sup> , 2019	Monday	0900-1200 hrs 1230 hrs 1400 hrs 1800 hrs	Registration & Equipment Check Coaches Meeting Practice Race Opening Ceremony
August 6 <sup>th</sup> , 2019	Tuesday	0900 hrs 1100 hrs	Coaches Meeting Races
August 7 <sup>th</sup> , 2019	Wednesday	0900 hrs 1100 hrs	Coaches Meeting Races
August 8 <sup>th</sup> , 2019	Thursday	0900 hrs 1100 hrs 1800 hrs	Coaches Meeting Races Crew party
August 9 <sup>th</sup> , 2019	Friday	0900 hrs 1100 hrs	Coaches Meeting Races
August 10 <sup>th</sup> , 2019	Saturday	0900 hrs 1100 hrs 1600 hrs 1830 hrs	Coaches Meeting Medal Races & Last Race Last possible warning signal Prize Giving & Closing Ceremony
August 11 <sup>th</sup> , 2019	Sunday		Departure

This changes NOR 6.2

- 8.2 12 (twelve) Opening series races are scheduled over 4 (four) days followed by 1 (one) Opening Series race on the last day for boards that do not qualify for the Medal Race.
- 8.3 Qualifying Series will consist of a maximum of 6 races and a minimum of 4 races, sailed for a minimum of 2 days or as long as necessary for both fleets to complete 4 races.
- 8.4 Final Series will run for a maximum of 3 days with a maximum of 7 races (6 races for those assigned to the Medal Race).
- 8.5 One Medal race is scheduled for Men and one Medal Race for Women.
- 8.6 On the Last Day
- 8.6.1 if fewer than 4 races have been completed for split fleets, then the last day continues as Qualifying Series.
- 8.6.2 if fewer than 2 Final Series races for split fleets and fewer than 6 races for single fleets have been completed then the last day will continue as Final/Opening Series.
- 8.6.3 if 2 or more Final Series races for split fleets and 6 or more Opening Series races for single fleets have been completed then competitors will race in the Medal Race or, for those not assigned to the Medal Race an additional Final/Opening Series race.
- 8.7 The scheduled time of the warning signal for the first race each day is 1100.
- 8.8 The warning signal for each succeeding race will be made as soon as practicable after the finish of the previous race.
- 8.9 To alert competitors that a race or sequence of races will begin soon, the orange starting line flag will be displayed (with one sound) for at least five minutes before a warning signal is made.
- 8.10 On the last day of the regatta no warning signal will be made after 1600 unless after a postponement during a start sequence or a general recall.

## 9. FLEETS, CLASS FLAGS & COLOURS

9.1 The description of Class flags and bibs will be as follows:

<i><b>Fleet</b></i>	<i><b>Ranking Bib</b></i>	<i><b>Class Flag</b></i>
Youth Men Yellow/Gold/Medal	Light-blue	Light-blue flag with black RS:X logo
Youth Men Blue/Silver	Green	Green flag with white RS:X logo
Youth Women	Pink	Pink flag with white RS:X logo

## 10. RACING AREAS

- 10.1 Addendum A shows the Racing area.
- 10.2 The racing area is defined as an area extending 75 meters beyond the entire course in which a competitor would normally sail while racing.
- 10.3 **[DP]** Boards not racing shall avoid that area.

## 11. COURSES

- 11.1 Addendum B shows the courses, including the course signals, approx. angles between legs, the order in which marks are to be passed, and the side on which each mark is to be left.
- 11.2 At the discretion of the Class Course Representative the course will be Trapezoidal or Windward-Leeward Courses for Opening Series. The courses may have slalom ends.
- 11.3 For the Medal Races the course will be, at the discretion of the Class Course Representative, a Windward-Leeward course on non-planing racing conditions or Reaching Start course (RRS Appendix B3.26.2 Starting System 2 with RRS 29.1 and 29.2 applies) on planing racing conditions. For reaching starts RRS B2.17 shall apply.
- 11.4 Race target time will be 20-25 minutes for all races. This may be varied at the discretion of the Class Course Representative.
- 11.5 If a gate is either set or replaced by a single mark, it shall be left to port.

## 12. MARKS

- 12.1 Marks 1, 2, 3, 4 and all slalom marks and change marks will all be inflatable buoys.
- 12.2 The starting marks will be a Race Committee Signal Boat at the starboard end of the start line and a Race Committee Pin-end Boat or a laid mark.
- 12.3 The finishing marks will be a Race Committee Boat and a laid mark.
- 12.4 The colour and shape of inflatable marks and laid marks will be as follows:

Course Marks 1, 2, 3S, 3P, 4S, 4P	Red Cylindrical
Change Marks	Orange Cylindrical
Marks S1, S2, S3	Orange Conical
Finish Mark	Red Cylindrical

- 12.5 A boat that is a mark may not be anchored, but held in place by the use of an engine. This will not be grounds for redress, provided the boat remains close to her correct position. This changes RRS 62.1(a).

## 13. THE START

- 13.1 Windward Start races will be started by using RRS B3.26.1 with the warning signal made 5 minutes before the starting signal.
- 13.2 Reaching Start races will be started by using RRS B3.26.2 with the warning signal made 2

minutes before the starting signal.

- 13.3 The starting line will be between the staff displaying an orange flag on the race committee vessel at the starboard end and either
- 13.3.1 The course side of the port-end inflatable starting mark, or
  - 13.3.2 A staff displaying an orange flag on the race committee vessel at the port end.
- 13.4 **[DP]** When a starting sequence is in progress, competitors whose warning signal has not been made shall avoid the starting area. The starting area is defined as a rectangle 75 meters from the starting line and marks in all directions.
- 13.5 A competitor starting later than 4 minutes after her starting signal will be scored Did Not Start (DNS) without a hearing. This changes RRS A4 and A5.

## 14. CHANGE OF THE NEXT LEG OF THE COURSE

- 14.1 To change the next leg of the course, the race committee will lay a new mark (or move the finishing line) and remove the original mark as soon as practicable. When in a subsequent change a new mark is replaced, it will be replaced by an original mark.

## 15. SHORTENING COURSE

- 15.1 During the races, the Race Committee may shorten the course according to RRS 32.

## 16. THE FINISH

- 16.1 The finishing line will be between the staff displaying a blue flag on the finishing mark and the course side of the laid mark (or the flag staff on this mark if present) at the other end of the finish line.

## 17. PENALTY SYSTEM

- 17.1 Penalties for breaches of rules in the Sailing Instructions marked **[SP]** will be 1 point for each infringement. The penalty is applied to each race (except the Finals) in which the instruction was infringed except that for a breach of SI 21.2:
- 17.1.1 Failure to Check-Out will result in 1-point penalty for the next race completed even if no race is completed on the day of the infringement.
  - 17.1.2 Failure to Check-In will result in 1-point penalty for the last race completed even if no race is completed on the day of the infringement.
  - 17.1.3 Only one 1-point penalty for infringements of SI 17.1.1 and SI 17.1.2 will be applied to any one race.
- 17.2 If penalties referred to in SI 17.1 are applied by the Race Committee:
- 17.2.1 they will be applied without a hearing. This changes RRS 63.1 and A5.
  - 17.2.2 a competitor shall not be scored worse than a disqualified competitor.
  - 17.2.3 they will be posted on the Official Notice Board within one hour of the protest time limit.

## 18. TIME LIMITS AND TARGET TIMES

- 18.1 Time limits and target times are in minutes and as follows:

	<b><i>Time Limit</i></b>	<b><i>Mark 1 Time Limit</i></b>	<b><i>Finish Window</i></b>	<b><i>Target Time</i></b>
All Races	40	15	15	20-25



- 18.2 If no board has passed Mark 1 within the Mark 1 time limit the race committee will abandon the race.
- 18.3 Competitors failing to finish within the time stated in the Finish Window, after the first competitor in that group sails the course and finishes, will be scored Did Not Finish (DNF). This changes RRS 35, A4 and A5.

## 19. PROTESTS AND REQUESTS FOR REDRESS

- 19.1 Protest forms are available at the Race Office. Protests and requests for redress or reopening shall be delivered there within the protest time limit.
- 19.2 For each fleet, the protest time limit is 60 minutes after the last competitor has finished the last race of the day for that fleet or when the race committee signals no more racing today, whichever is later.
- 19.3 Notices will be posted within 30 minutes of the protest time limit to inform competitors of hearings in which they are parties or named as witnesses.
- 19.4 Hearings will be held in the Protest Room.
- 19.5 Notices of protests by the Race Committee, Technical Committee or International Jury will be posted within the protest time limit to inform competitors under RRS 61.1(b).
- 19.6 Breaches of Class Rules C.1.2, C9.2 and rules in the Sailing Instructions marked **[NP]** will not be grounds for a protest by a competitor. This changes RRS 60.1(a).
- 19.7 On the last scheduled day of a competitor's Series (Qualification or Final/Opening), a request for reopening a hearing shall be delivered within the protest time limit if the requesting party was informed of the decision on the previous day, or no later than 30 minutes after the requesting party was informed of the decision on that day. This changes RRS 66.
- 19.8 On the last scheduled day of a competitor's Series (Qualification or Advance/Opening), request for redress from an International Jury decision shall be delivered no later than 30 minutes after the decision was posted. This changes RRS 62.2.

## 20. SCORING

- 20.1 The Low Point System applies accordance with RRS A4 and B8.
- 20.2 A minimum of 3 races is required for a valid Championship.
- 20.3 Score for the:
- 20.3.1 2019 Saint Petersburg RS:X U17 Windsurfing Championships will be extracted from the 2019 RS:X Windsurfing Youth World Championships score without recalculation.
- 20.4 A competitor's series score will be the total of her race scores excluding her worst score(s) as follows:

20.4.1 When racing in a single fleet:

<b>Opening Series Races</b>	<b>Discards</b>	<b>Comments</b>
1-3	0	No discard
4-10	1	One worst score discarded
11 or more	2	Two worst scores discarded

20.4.2 When racing in a split fleet:

<b>Opening Series Races</b>	<b>Discards</b>	<b>Comments</b>
1-3	0	No discard
4-10	1	One worst score discarded
11 or more	2	The worst score in Qualifying Series and the worst score in Final Series

- 20.5 To request correction of an alleged error in posted results, a competitor may complete a Scoring Enquiry Form available at the Race Office.

- 20.6 The scoring abbreviation for a penalty imposed under SI 17.1 will be SCP.
- 20.7 For Qualification Series, scores are based on the number of competitors assigned to the largest fleet in that Series. This changes RRS A4.2.
- 20.8 For those competitors not assigned to the Medal Race and scheduled to an additional Opening Series race as detailed in SI 8.6.3, the first finisher will be scored 11 points, 2<sup>nd</sup> 12 pts. and so on.
- 20.9 If no race in Final Series is completed, the overall ranking in Qualification Series will be established and this shall count as the official result.
- 20.10 If no Medal Race is completed, the rankings in Opening Series will be established and this shall count as the official result.
- 20.11 When racing in multiple fleets, competitors assigned to Gold fleet will be ranked higher in the regatta than competitors assigned to Silver fleet and so forth.
- 20.12 Competitors assigned to compete in the Medal Races will be ranked highest in the regatta except for a competitor disqualified from a Medal Race under RRS 5 or RRS 69.
- 20.13 Medal Race:
- 20.13.1 The Medal Race score shall not be excluded.
- 20.13.2 The Medal Race score double points (1st = 2 points, 2nd = 4 points, etc), and the scores are based on the number of competitors assigned to compete in that race. This changes RRS A4.2.
- 20.13.3 For competitors assigned to compete in the Medal Race, ties in the regatta score are broken by the Medal Race scores. This changes RRS A8.
- 20.14 A competitor assigned to compete in the Medal Race shall make a genuine effort to start, sail the course and finish. The penalty for a breach of this instruction will be ranking the competitor tenth in the regatta. If there are two such competitors, they will be ranked ninth and tenth, in order of their Series ranks, and so on. This changes RRS A4 and A5.

## 21. [DP] [NP] SAFETY REGULATIONS

---

- 21.1 Competitors shall carry a whistle as specified in the Class Rules C.1.2.
- 21.2 **[SP]** Check-Out; Check-In:
- 21.2.1 When going out to race each competitor intending to race shall personally sign against their name and / or sail number.
- 21.2.2 On returning ashore, even after the display of AP/H, AP/A, N/H or N/A when no race has been completed after launching, each competitor shall personally sign, against their name and / or sail number, within the protest time limit or within 60 minutes of the display of AP/H, AP/A, N/H or N/A.
- 21.2.3 Check-Out and Check-In lists will be available at the Race Office.
- 21.3 A competitor that retires from a race shall notify the Race Committee as soon as possible and shall complete a Retirement Declaration Form, available from the Race Office, within the protest time limit.
- 21.4 Competitors not racing for any of the racing days shall inform the Race Office.
- 21.5 When the Race Committee displays flag V with repetitive sounds, all official and support boats shall monitor the Race Committee VHF channel for instructions and assist in search and rescue operations.

## 22. [DP] REPLACEMENT OF EQUIPMENT

---

- 22.1 Substitution of damaged or lost equipment will not be allowed unless authorised by the Technical Committee.
- 22.2 **Replacement ashore:** Requests for substitution of damaged or lost equipment shall be made in writing on a form available at the Race Office and delivered there for consideration. Any request shall be made at the first reasonable opportunity.



- 22.3 **Replacement afloat:** When an item of equipment is damaged or lost shortly before a race and is replaced, the competitor shall notify the Race Committee before the warning signal. As soon as practicable after coming ashore and within the protest time limit, the competitor shall comply with SI 22.2 and the replaced item shall be presented to the Technical Committee.

## 23. [DP] EQUIPMENT AND MEASUREMENT CHECKS

- 23.1 Only marked equipment shall be used at this event. 'Fast-check' stickers and instructions on placement will be issued to each competitor at registration. Registration and marking shall be completed as follows:
- 23.1.1 Competitors shall apply the issued stickers, in compliance with the instructions, to one set of equipment to be used for the entire event.
  - 23.1.2 Fins shall be presented to the Technical Committee for stamping.
- 23.2 The Technical Committee will, as far as possible, answer competitors' questions relating to measurement and Class rules.
- 23.3 Stamped/marked equipment shall not be removed from the venue, the racing area and the waters leading to them, without prior written permission of the Technical Committee.
- 23.3.1 The venue will be defined and that definition placed on the Official Notice Board.
- 23.4 Equipment may be inspected at any time for compliance with the class rules and the sailing instructions according to the following procedures:
- 23.4.1 A competitor may be instructed by the Technical Committee, either ashore or on the water, to proceed immediately to the Inspection Area for inspection.
  - 23.4.2 Until permission is given by the Technical Committee, a competitor once instructed to proceed for inspection, shall have no unauthorised contact with any support personnel, no person shall join or leave the board, no equipment or other item shall be taken on or off that board and the board shall not leave the Inspection Area.

## 24. [DP] [NP] ADVERTISING

- 24.1 Each competitor shall place stickers issued by the Organising Authority, back to back on the sail immediately below batten 5 and as close to the leach as possible but without overlapping the sail corner reinforcement. Competitors shall not cut or adapt the stickers in any way.

## 25. LOCATIONS OF IMPORTANCE

- 25.1 The Race Office is located at the tent on the beach
- 25.2 The Official Notice Board is located inside the Race Office tent
- 25.3 The Official Flagpoles are located on the left of the Main Stage
- 25.4 The Equipment Inspection area is located in the Boards Storage near the tent of the Race Office
- 25.5 The Jury Room is located at the Race Office tent

## 26. OFFICIAL BOATS

- 26.1 Official boats will be marked as follows:

<b>Boat</b>	<b>Flag</b>
Jury	Yellow flag with black letter IJ
Race Committee	Green flag with black letter RC
Rescue	Yellow flag with black letter MARSHALL
Press, Media	Blue flag with black letter PRESS

- 26.2 Actions by the official boats or helicopters shall not be grounds for redress by a competitor.

This changes RRS 62.1(a).

## 27. [DP] SUPPORT BOATS

27.1 Support Persons shall comply with the Support Boat Regulations. See Addendum C.

## 28. [DP] TRASH DISPOSAL

28.1 Trash may be placed aboard support and Race Committee boats.

## 29. [DP] RADIO COMMUNICATION

29.1 While on the water, a competitor shall not carry equipment capable of making radio transmissions or receiving radio communications, except for equipment provided by the Organising Authority. This restriction also applies to mobile telephones.

29.2 For purposes of safety, support boats may monitor the Race Committee working channel, but cannot transmit on this channel except in the case of an emergency.

## 30. PRIZES

30.1 Prizes will be awarded according to the Notice of Race.

## 31. DISCLAIMER OF LIABILITY

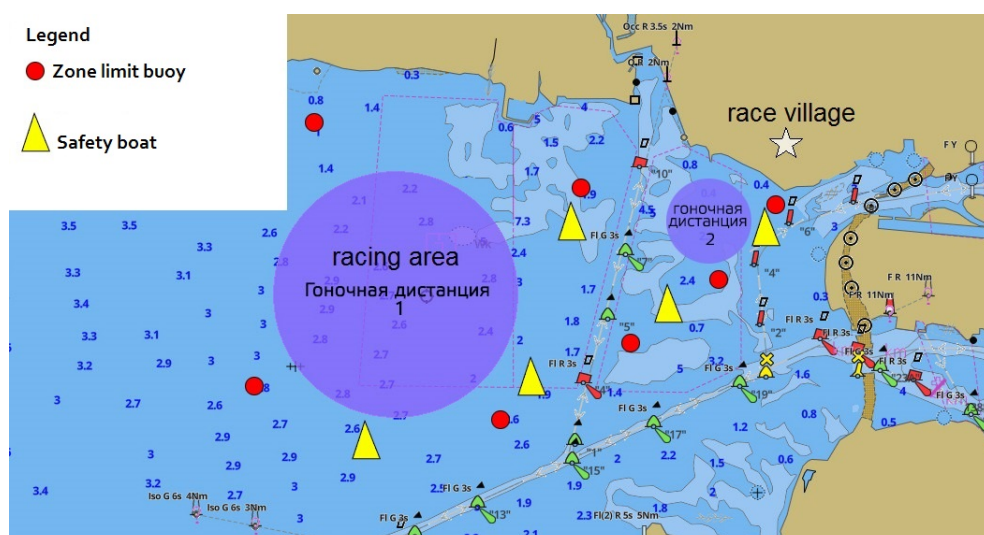
31.1 Competitors participate in the regatta entirely at their own risk. See RRS 4, Decision to Race. The Organising Authority will not accept any liability for material damage or personal injury or death sustained in conjunction with or prior to, during, or after the regatta.

## 32. INSURANCE

32.1 Each participating competitor shall be insured with valid third-party liability insurance with a minimum cover of €1,000,000 per event or the equivalent.

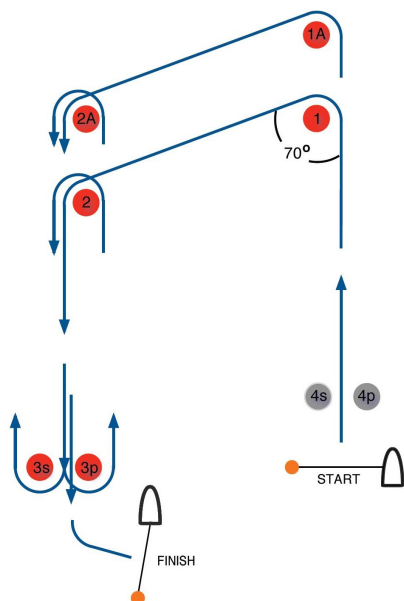
32.2 Support boat drivers shall also have valid third-party liability insurance with a minimum cover of €1,500,000 per event or the equivalent.

## ADDENDUM A – CHART SHOWING RACING AREA



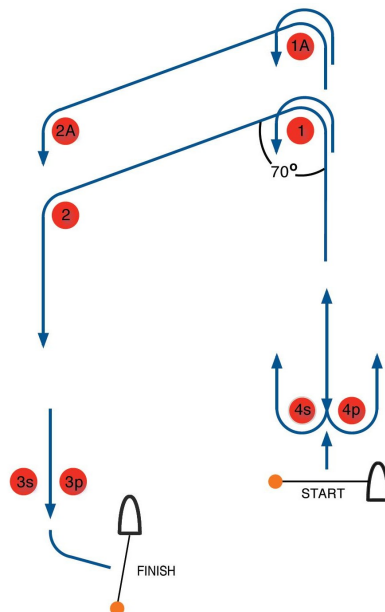
## ADDENDUM B1 – COURSES FOR WINDWARD STARTS

**O**



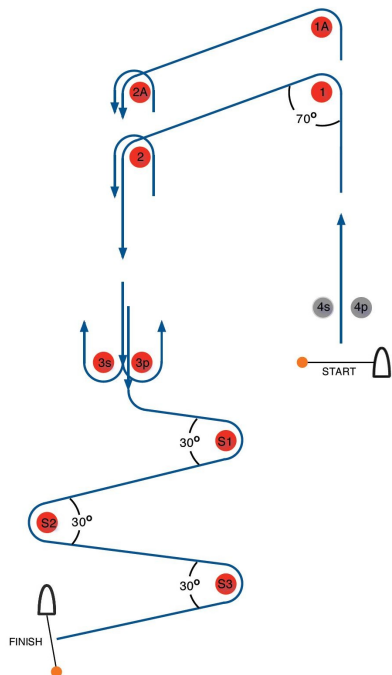
Signal	Mark rounding order
O2	Start - 1 - 2 - 3s/3p - 2 - 3p - Finish
OE2	Start - 1A - 2A - 3s/3p - 2A - 3p - Finish
O3	Start - 1 - 2 - 3s/3p - 2 - 3s/3p - 2 - 3p - Finish
OE3	Start - 1A - 2A - 3s/3p - 2A - 3s/3p - 2A - 3p - Finish

**I**



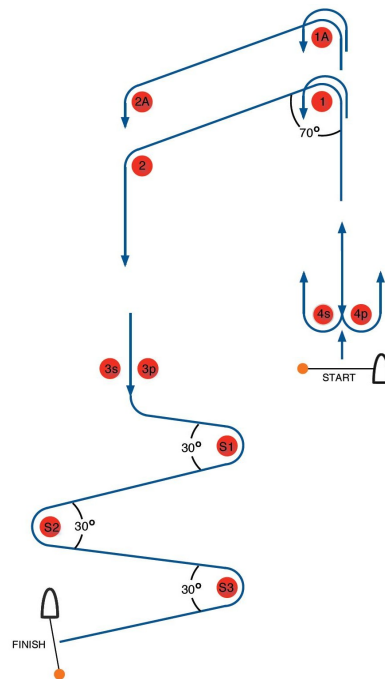
Signal	Mark rounding order
I2	Start - 1 - 4s/4p - 1 - 2 - 3p - Finish
IE2	Start - 1A - 4s/4p - 1A - 2A - 3p - Finish
I3	Start - 1 - 4s/4p - 1 - 4s/4p - 1 - 2 - 3p - Finish
IE3	Start - 1A - 4s/4p - 1A - 4s/4p - 1A - 2A - 3p - Finish

**OS**



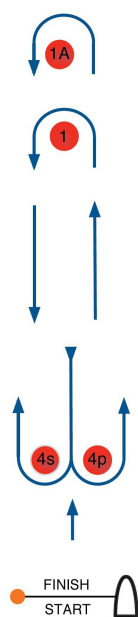
Signal	Mark rounding order
OS2	Start - 1 - 2 - 3s/3p - 2 - 3p - S1 - S2 - S3 - Finish
OES2	Start - 1A - 2A - 3s/3p - 2A - 3p - S1 - S2 - S3 - Finish
OS3	Start - 1 - 2 - 3s/3p - 2 - 3s/3p - 2 - 3p - S1 - S2 - S3 - Finish
OES3	Start - 1A - 2A - 3s/3p - 2A - 3s/3p - 2A - 3p - S1 - S2 - S3 - Finish

**IS**



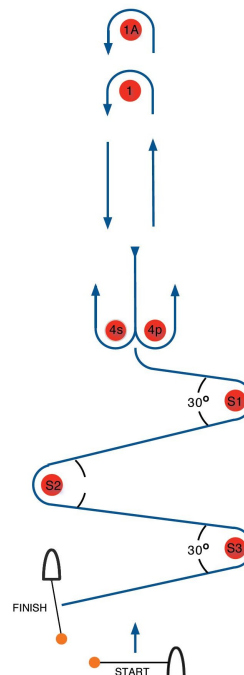
Signal	Mark rounding order
IS2	Start - 1 - 4s/4p - 1 - 2 - 3p - S1 - S2 - S3 - Finish
IES2	Start - 1A - 4s/4p - 1A - 2A - 3p - S1 - S2 - S3 - Finish
IS3	Start - 1 - 4s/4p - 1 - 4s/4p - 1 - 2 - 3p - S1 - S2 - S3 - Finish
IES3	Start - 1A - 4s/4p - 1A - 4s/4p - 1A - 2A - 3p - S1 - S2 - S3 - Finish

**L**



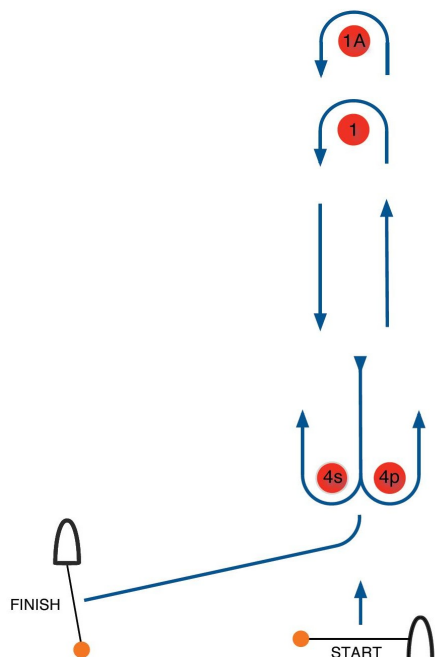
Signal	Mark rounding order
L2	Start - 1 - 4s/4p - 1 - Finish
LE2	Start - 1A - 4s/4p - 1A - Finish
L3	Start - 1 - 4s/4p - 1 - 4s/4p - 1 - Finish
LE3	Start - 1A - 4s/4p - 1A - 4s/4p - 1A - Finish

**LS**



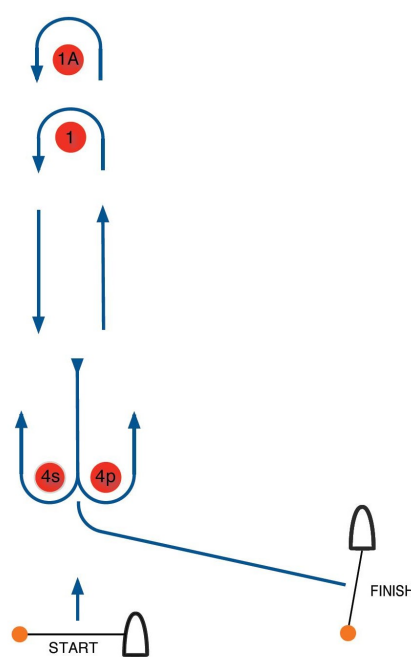
Signal	Mark rounding order
LS2	Start - 1 - 4s/4p - 1 - 4p - S1 - S2 - S3 - Finish
LES2	Start - 1A - 4s/4p - 1A - 4p - S1 - S2 - S3 - Finish
LS3	Start - 1 - 4s/4p - 1 - 4s/4p - 1 - 4p - S1 - S2 - S3 - Finish
LES3	Start - 1A - 4s/4p - 1A - 4s/4p - 1A - 4p - S1 - S2 - S3 - Finish

**LG**



Signal	Mark rounding order
LG1	Start - 1 - 4s - Finish
LEG1	Start - 1A - 4s - Finish
LG2	Start - 1 - 4s/4p - 1 - 4s - Finish
LEG2	Start - 1A - 4s/4p - 1A - 4s - Finish
LG3	Start - 1 - 4s/4p - 1 - 4s/4p - 1 - 4s - Finish
LEG3	Start - 1A - 4s/4p - 1A - 4s/4p - 1A - 4s - Finish

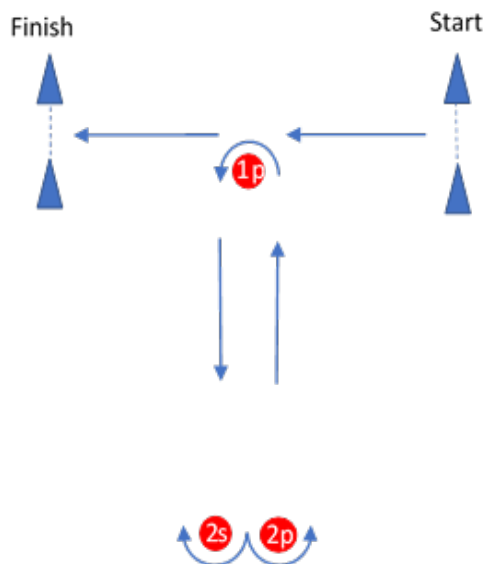
**LR**



Signal	Mark rounding order
LR1	Start - 1 - 4p - Finish
LER1	Start - 1A - 4p - Finish
LR2	Start - 1 - 4s/4p - 1 - 4p - Finish
LER2	Start - 1A - 4s/4p - 1A - 4p - Finish
LR3	Start - 1 - 4s/4p - 1 - 4s/4p - 1 - 4p - Finish
LER3	Start - 1A - 4s/4p - 1A - 4s/4p - 1A - 4p - Finish

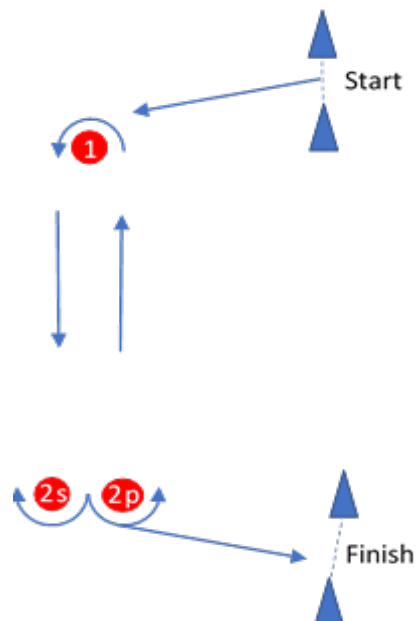
## ADDENDUM B2 – COURSES FOR REACHING STARTS

### RTR



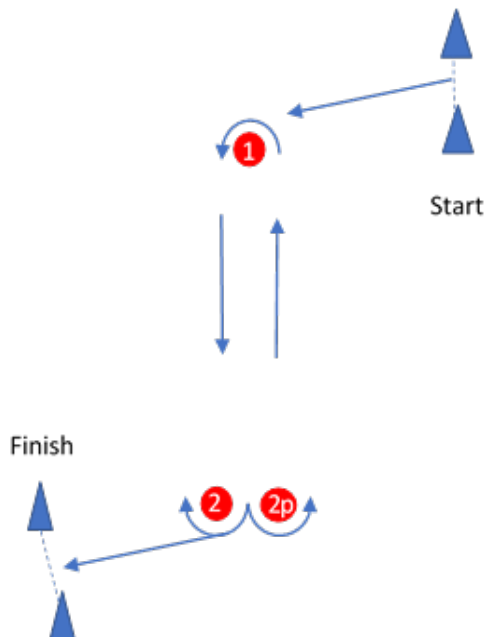
Signal	Mark rounding/passing order. P – to Port, S – to Starboard
RTR2	Start – 1P – 2S/2P – 1P – 2S/2P – 1P – Finish
RTR3	Start – 1P – 2S/2P – 1P – 2S/2P – 1P – 2S/2P – 1P – Finish
	<b>STARTING SYSTEM 2</b>

### RBR



Signal	Mark rounding/passing order. P – to Port, S – to Starboard
RBR2	Start – 1P – 2S/2P – 1P – 2S/2P – 1P – 2P – Finish
RBR3	Start – 1P – 2S/2P – 1P – 2S/2P – 1P – 2S/2P – 1P – 2P – Finish
	<b>STARTING SYSTEM 2</b>

### RBG



Signal	Mark rounding/passing order. P – to Port, S – to Starboard
RBG2	Start – 1P – 2S/2P – 1P – 2S/2P – 1P – 2S – Finish
RBG3	Start – 1P – 2S/2P – 1P – 2S/2P – 1P – 2S/2P – 2S – Finish
	<b>STARTING SYSTEM 2</b>

## ADDENDUM C – SUPPORT BOAT REGULATIONS

### C1. GENERAL

- 1.1 This Support Boat Regulations (SBR) shall apply from 1000 on Sunday July 1<sup>st</sup> until 1900 on Saturday July 7<sup>th</sup>.
- 1.2 For the purposes of these regulations, a support boat includes any boat that is under the control or direction of a person who is or may provide physical or advisory support to an athlete, including the gathering of data that may be used at a later time.
- 1.3 The Organizing Authority may inspect boats at any time to ensure that they comply with these regulations, and the person responsible for the boat shall facilitate such inspection.
- 1.4 An alleged breach of any of these regulations may be referred to the International Jury for a hearing. As a result of the hearing, the International Jury may instruct the Organizing Authority to withdraw accreditation and access rights from the offending party, with or without the option of substitution, either for a specified period or for the remainder of the competition.
- 1.5 The Organizing Authority may change these regulations at any time. Any changes will be posted on the Official Notice Board.
- 1.6 Support boats and designated drivers shall be registered at the Regatta Office either before leaving the venue by water for the first time or by 18:00 on the day before the first race of a competitor that it is supporting, whichever is earlier.
- 1.7 Each boat shall be insured with valid third-party liability insurance with a minimum coverage of € 1,500,000 euro (or equivalent) per incident.
- 1.8 Only the registered person may be a designated driver.
- 1.9 The person registering the support boat shall sign to confirm that:
  - 1.9.1 he / she holds a valid insurance certificate showing proof of third-party liability coverage as required by 1.7;
  - 1.9.2 the designated driver has a motorboat driving license recognized by a national authority appropriate to that boat;
  - 1.9.3 anyone who will be using a radio has an appropriate radio operation license recognized by a national authority.
- 1.10 Support boats shall be marked as follows:
  - 1.10.1 The three-letter NOC code shall be clearly displayed on both sides of the boat in strongly contrasting colours at all times while afloat;
  - 1.10.2 The minimum height for the letters shall be 200mm. The letters will not be provided by the Organizing Authority.

### C2. SAILING VENUE

- 2.1. Support boats shall use the designated slipway/area for launching. Once launched, trailers shall be moved immediately to the trailer park or as otherwise directed by the Organizing Authority.
- 2.2. Only support boats that will be registered will be allowed into the sailing venue.
- 2.3. When not in use, support boats shall be appropriately berthed at the sailing venue in the allocated areas for support boats for the entire time that these SBR apply.

### C3. SAFETY

- 3.1. Support boats shall carry on board:
  - 3.1.1. Life jackets / buoyancy aid for all passengers and the driver (it is recommended that they are worn at all times when afloat);
  - 3.1.2. First-aid kit;
  - 3.1.3. VHF radio;



- 3.1.4. Device for making a sound signal;
- 3.1.5. Compass;
- 3.1.6. Adequate anchor and tackle for conditions and depth;
- 3.1.7. Tow rope (minimum 15m long and 10mm thick);
- 3.1.8. Operational engine kill cord (also known as a safety lanyard or automatic engine immobilizer);
- 3.1.9. Knife.
- 3.2. It is strongly recommended that the kill cord be used at all times when the engine is running.
- 3.3. Team leaders are responsible for overseeing the safety of their support boats on the water, including knowledge of who is afloat and ensuring their safe return to the venue.
- 3.4. At all times, the registered driver(s) of a support boat shall comply with directions given by a Race Official. In particular, this includes assisting in rescue operations when requested to do so.

#### **C4. GENERAL RESTRICTIONS**

- 4.1. The registered driver(s) of a support boat will be responsible for the control of the boat at all times and will be held responsible for any inappropriate behaviour, dangerous actions or improper practices, or actions affecting the fairness or safety of competition.
- 4.2. Support boats shall not leave any device, piece of equipment, buoy, marker or similar item permanently in the water. Temporary use of floating objects is allowed for current measurement. These objects shall be removed as soon as the measurement has been taken.
- 4.3. Support boats should take particular care to minimize their wash when transiting the course areas.

#### **C5. SUPPORT BOAT ZONE**

- 5.1. Support Boats shall not be positioned:
  - 5.1.1. Closer than 75 meters of any board racing;
  - 5.1.2. Within 75 meters of the starting line and marks from the time of the preparatory signal until all boards have left the starting area, or the race committee signals a postponement, general recall or abandonment;
  - 5.1.3. Between any board racing and the next mark of the course;
  - 5.1.4. Between the inner and outer trapezoid courses when boards are racing on both courses;
  - 5.1.5. Within 75 meters of any mark of the course while boards are in the vicinity of that mark;
  - 5.1.6. Within 75 meters of the finishing line and marks while boards are finishing.
- 5.2. In addition, support boats that are motoring above 5 knots shall remain at least 150 meters from any board racing.

## ADDENDUM Q – UMPIRED FLEET RACING

This addendum has been approved by World Sailing in accordance with rule 86.2 and Regulation 28.1.3. It applies to all medal races and all pre-race or post-race activities related to them.

**Version:** January 1, 2019

*Marginal marks indicate important changes from recent versions.*

These sailing instructions change the definition Proper Course, and rules 20, 28.2, 44, 60, 61, 62, 63, 64, 65, 66, 70, B5 and F5.

### Q1 CHANGES TO RACING RULES

*Additional changes to rules are made in instructions Q2, Q3, Q4, and Q5.*

#### Q1.1 Changes to the Definitions and the Rules of Part 2

- (a) Add to the definition Proper Course: 'A boat taking a penalty or manoeuvring to take a penalty is not sailing a *proper course*.'
- (b) When rule 20 applies, the following arm signals are required in addition to the hails:
  - (1) for 'Room to tack', repeatedly and clearly pointing to windward; and
  - (2) for 'You tack', repeatedly and clearly pointing at the other boat and waving the arm to windward.

Instruction Q1.1(b) does not apply to boards, kiteboards, 2.4 Norlin OD and Hanse 303 classes.

#### Q1.2 Changes to Rules Involving Protests, Requests for Redress, Penalties and Exoneration

- (a) The first sentence of rule 44.1 is replaced with: 'A boat may take a One-Turn Penalty in accordance with rule 44.2 when, in an incident while *racing*, she may have broken one or more of the rules of Part 2 (except rule 14 when she has caused damage or injury), rule 31 or rule 42.'
- (b) For boards, the One-Turn Penalty is one 360° turn with no requirement for a tack or a gybe.
- (c) Rule 60.1 is replaced with 'A boat may protest another boat or request redress provided she complies with instructions Q2.1 and Q2.4.'
- (d) The third sentence of rule 61.1(a) and all of rule 61.1(a)(2) are deleted. Rule B5 is deleted.
- (e) Rules 62.1(a), (b) and (d) are deleted. In a race where this addendum applies, there shall be no scoring adjustments for redress given under any of these rules for a previous race.
- (f) The three sentences of rule 64.1(a) are replaced with: 'When the protest committee decides that a boat that is a *party* to a protest hearing has broken a *rule*, it may impose penalties other than disqualification, and may make any other scoring arrangement it decides is equitable. If a boat has broken a *rule* when not *racing*, the protest committee shall decide whether to apply any penalty to the race sailed nearest in time to that of the incident or make some other arrangement.'
- (g) Rule 64.1(a) is changed so that the provision for exonerating a boat may be applied by the umpires without a hearing, and it takes precedence over any conflicting instruction of this addendum.
- (h) Rule 64.4(b) is replaced with: 'The protest committee may also penalize a boat that is a *party* to a hearing under rule 60.3(d) or rule 69 for a breach of a *rule* by a *support person* by changing the boat's score in a single race, up to and including DSQ.'
- (i) Rules P1 to P4 shall not apply.

## **Q2 PROTESTS AND REQUESTS FOR REDRESS BY BOATS**

- Q2.1** While racing, a boat may protest another boat under a rule of Part 2 (except rule 14) or under rule 31 or 42; however, a boat may only protest under a rule of Part 2 for an incident in which she was involved. To do so she shall hail 'Protest' and conspicuously display a red flag at the first reasonable opportunity for each. She shall remove the flag before, or at the first reasonable opportunity after a boat involved in the incident has taken a penalty voluntarily or after an umpire's decision. However, a board, kiteboard, 2.4 Norlin OD or Hanse 303 need not display a red flag.
- Q2.2** A boat that protests as provided in instruction Q2.1 is not entitled to a hearing. Instead, a boat involved in the incident may acknowledge breaking a rule by taking a One-Turn Penalty in accordance with rule 44.2. An umpire may penalize any boat that broke a rule and was not exonerated, unless the boat took a voluntary penalty.
- Q2.3** At the finishing line, the race committee will inform the competitors about each boat's finishing place or scoring abbreviation. After this has been done, the race committee will promptly display flag B with one sound. Flag B will be displayed for at least two minutes and then removed with one sound. If the race committee changes the scoring information provided at the finishing line while flag B is displayed, it will display flag L with one sound. Flag B will continue to be displayed for at least two minutes after any changes are made.
- Q2.4** A boat intending to
- (a) protest another boat under a rule other than instruction Q3.2 or rule 28, or a rule listed in instruction Q2.1,
  - (b) protest another boat under rule 14 if there was contact that caused damage or injury, or
  - (c) request redress
- shall hail the race committee before or during the display of flag B. The same time limit applies to protests under instruction Q5.5. The protest committee shall extend the time limit if there is good reason to do so.
- Q2.5** The race committee will promptly inform the protest committee about any protests or requests for redress made under instruction Q2.4.

## **Q3 UMPIRE SIGNALS AND IMPOSED PENALTIES**

- Q3.1** An umpire will signal a decision as follows:
- (a) A green and white flag with one long sound means 'No penalty.'
  - (b) A red flag with one long sound means 'A penalty is imposed or remains outstanding.' The umpire will hail or signal to identify each such boat.
  - (c) A black flag with one long sound means 'A boat is disqualified.' The umpire will hail or signal to identify the boat disqualified.
- Q3.2**
- (a) A boat penalized under instruction Q3.1(b) shall take a One-Turn Penalty in accordance with rule 44.2.
  - (b) A boat disqualified under instruction Q3.1(c) shall promptly leave the course area.

## **Q4 PENALTIES AND PROTESTS INITIATED BY AN UMPIRE; ROUNDING OR PASSING MARKS**

- Q4.1** When a boat
- (a) breaks rule 31 and does not take a penalty,
  - (b) breaks rule 42,
  - (c) gains an advantage despite taking a penalty,
  - (d) deliberately breaks a rule,
  - (e) commits a breach of sportsmanship, or
  - (f) fails to comply with instruction Q3.2 or to take a penalty when required to do so by an umpire,

an umpire may penalize her without a protest by another boat. The umpire may impose one or more One-Turn Penalties to be taken in accordance with rule 44.2, each signalled in accordance with instruction Q3.1(b), or disqualify her under instruction Q3.1(c), or report the incident to the protest committee for further action. If a boat is penalized under instruction Q4.1(f) for not taking a penalty or taking a penalty incorrectly, the original penalty is cancelled.

**Q4.2** The last sentence of rule 28.2 is changed to 'She may correct any errors to comply with this rule, provided she has not rounded the next *mark* or *finished*.' A boat that does not correct any such error shall be disqualified under instruction Q3.1(c).

**Q4.3** An umpire who decides, based on his own observation or a report received from any source, that a boat may have broken a rule, other than instruction Q3.2 or rule 28 or a rule listed in instruction Q2.1, may inform the protest committee for its action under rule 60.3. However, he will not inform the protest committee of an alleged breach of rule 14 unless there is damage or injury.

**Q5 PROTESTS; REQUESTS FOR REDRESS OR REOPENING; APPEALS; OTHER PROCEEDINGS**

**Q5.1** No proceedings of any kind may be taken in relation to any action or non-action by an umpire.

**Q5.2** A boat may not base an appeal on an alleged improper action, omission or decision of the umpires. A party to a hearing may not base an appeal on the decision of the protest committee. In rule 66 the third sentence is changed to 'A *party* to the hearing may not ask for a reopening.'

**Q5.3**

- (a) Protests and requests for redress need not be in writing.
- (b) The protest committee may inform the protestee and schedule the hearing in any way it considers appropriate and may communicate this orally.
- (c) The protest committee may take evidence and conduct the hearing in any way it considers appropriate and may communicate its decision orally.
- (d) If the protest committee decides that a breach of a rule has had no effect on the outcome of the race, it may impose a penalty of points or fraction of points or make another arrangement it decides is equitable, which may be to impose no penalty.
- (e) If the protest committee penalizes a boat in accordance with instruction Q5.3 or if a standard penalty is applied, all other boats will be informed about the change of the penalized boat's score.

**Q5.4** The race committee will not protest a boat.

**Q5.5** The protest committee may protest a boat under rule 60.3. However, it will not protest a boat for breaking instruction Q3.2 or rule 28, a rule listed in instruction Q2.1, or rule 14 unless there is damage or injury.

**Q5.6** The technical committee will only protest a boat under rule 60.4 when it decides that a boat or personal equipment does not comply with the class rules, rule 43, or the rules in the equipment regulations of the event, if such exist. In such a case, the technical committee shall protest.