



YAI SENIOR NATIONAL CHAMPIONSHIP 2022 **(RANKING EVENT & ASIAN GAMES SELECTION TRIAL I)** **13 NOV TO 20 NOV 2022**

Organising Authority (OA) - INWTC (Mbi) in conjunction with the Yachting Association of India (YAI) and Indian Naval Sailing Association (INSA).

SAILING INSTRUCTIONS

1 RULES

- 1.1 The event will be governed by the rules as defined in *The Racing Rules of Sailing (RRS)*.
- 1.2 If there is a conflict between a rule in the Notice of Race (NoR) and a rule in the Sailing Instructions, the rule in the Sailing Instructions shall take precedence. This changes RRS 63.7.

2 COMMUNICATIONS WITH COMPETITORS

- 2.1 Notices to competitors will be posted on the event WhatsApp chat group called ONB YAI Sr Nationals 2022. This chat group will serve as the Official Notice Board (ONB). Team Leaders will be invited to the chat group and given Group Admin rights. Team Leaders are requested to invite competitors and support persons under their care and any other persons who may have an interest in the ONB, to the chat group. Competitors and support persons who are without a Team Leader may approach the Race Office for assistance. Notices may also be posted on the physical notice board located in the INWTC (Mbi) boat shed. Failure to post a notice on the physical notice board will not be grounds for redress. This changes RRS 62.1(a).
- 2.2 The Race Office is located at the entrance of the main gate of INWTC (Mbi).

3 CHANGES TO SAILING INSTRUCTIONS

Any change to the Sailing Instructions will be posted no later than two hours before the first warning signal on the day it will take effect, except that any change to the format or schedule of races will be posted by 2000h on the day before it will take effect.

4 [DP] [NP] CODE OF CONDUCT

Competitors and support persons shall comply with reasonable requests from regatta officials.

5 SIGNALS MADE ASHORE

- 5.1 Signals made ashore will be displayed on the flag staff located in the launching area near slipway of INWTC (Mbi).
- 5.2 When flag AP is displayed ashore, "1 minute" is replaced with "not less than 45 minutes" in the race signal AP.

6 FORMAT OF RACING

- 6.1 The regatta will consist of a single series.
- 6.2 A maximum of 12 races are scheduled for all events.

7 SCHEDULE OF EVENTS AND RACES

- 7.1 Schedule of events and races are shown in SI **Addendum - A**.
- 7.2 Three races are scheduled per day for each event. One extra race per day may be sailed. The change in schedule will be made in accordance with SI 3.
- 7.3 The scheduled time of the warning signal for the first race of each day is at 1355 hrs for Race Area B and Session 1 of Race Area A. The scheduled time of the warning signal for the first race of each day is at 1630 hrs for Session 2 of Race Area A.
- 7.4 The race committee may change the scheduled time of the warning signal to 0745 hrs for Session 1 of Race Area A & B and 0930 hrs for Session 2 of Race Area A. The change in schedule will be made in accordance with SI 3.
- 7.5 To alert boats that a race or sequence of races will begin soon, the orange starting line flag will be displayed with one sound at least five minutes before a warning signal is made.
- 7.6 From 15th Nov 2022, a daily briefing for competitors will be held at 1030 hrs in INWTC (Mbi) boat shed. If the warning signal is at 0745 hrs, there will be no briefing for competitors.
- 7.7 On **20th Nov 2022** no warning signal will be made after **1400 hrs**.

8 CLASS FLAGS

Class flags are:

Events	Class Insignia	Background Colour
ILCA 7	ILCA	White
ILCA 6	ILCA	Green
470 (Mixed)	470	White
NACRA17 (Mixed)	NACRA 17	White
49er (Men)	49er	White
49er FX (Women)		
RS:X (Men)	RS:X	White
RS: X (Women)		
iQ FOiL (Men)	iQ FOiL	White
iQ FOiL (Women)		

9 RACING AREAS

- 9.1 SI **Addendum - B** shows the location of the racing areas.
- 9.2 Events assigned to race areas are as follows:

RACE AREA A		RACE AREA B
Nacra 17 (Mixed)	Session 1	470 (Mixed)
49er & 49erFX		ILCA 7
RS:X (Men) & RS:X (Women)		ILCA 6
iQ FOiL (Men) & iQ FOiL (Women)	Session 2	

- 9.3 Any reassignment of events to race areas will be posted as per SI 3.
- 9.4 **[DP]** Competitors of Race Area B shall stay clear of boats racing in Race Area A.
- 9.5 **[DP]** Competitors in Session 2 shall stay clear of boats racing in Race Area B and Session 1 of Race Area A.

10 COURSES

- 10.1 The diagrams in **Addendum - C** show the courses, course designations, including the order in which marks are to be passed, and the side on which each mark is to be left.
- 10.2 The course may be shortened provided 2 or more legs have been sailed.
- 10.3 If there is only one mark in the gate position, this mark is to be left to port.

11 MARKS

Race Area	Marks	Description of marks
Race Area A	Starting marks	Race Committee (RC) vessel with a staff displaying an orange flag and an orange ball mark
	Finishing marks	RC vessel with a staff displaying a blue flag on starboard side and a red ball mark on port side.
	Mark 1E	Big orange cylindrical mark
	1A	Red ball mark
	1M	Red cylindrical mark with a black tape
	Mark 1	Red cylindrical mark
	Marks 4S/4P	Red cylindrical mark
Replacement Mark	Red cylindrical mark with three black tapes	
Race Area B	Starting marks	RC vessels with staffs displaying orange flags
	Finishing marks	RC vessel with a staff displaying a blue flag and a red ball mark on port side.
	Marks 1, 2 & 3	Big Orange cylindrical mark
	Marks 4S / 4P	Yellow conical marks
	Replacement Mark	Red cylindrical mark with three black tapes

12 THE START

- 12.1 Races will be started by using RRS 26 with the warning signal made 5 minutes before the starting signal. For Sprint Slalom Races, the warning signal will be made 3 minutes before the starting signal as shown in **Addendum - C**.
- 12.2 The starting line will be between a staff displaying an orange flag on the start committee vessel at the starboard end and the course side of the port end starting mark, or a staff displaying an orange flag on the RC vessel at the port end.
- 12.3 **[DP][NP]** Boats/boards whose warning signal has not been made shall avoid the starting area during the starting sequence for other races and shall stay at least 50 metres from boats that are starting or manoeuvring around the starting area to prepare for the start.
- 12.4 A boat that does not start within 4 minutes after her starting signal will be scored Did Not Start (DNS) without a hearing. This changes RRS A4 and A5.

13 CHANGE OF THE NEXT LEG OF THE COURSE

- 13.1 To change the next leg of the course, the RC will lay a new mark (or move the finishing line) and remove the original mark as soon as practicable. When in a

subsequent change, a new mark is replaced; it will be replaced by an original mark.

- 13.2 Except at a gate, boats shall pass between the RC vessel signalling the change of the next leg and the nearby mark, leaving the mark to port and the RC vessel to starboard. This changes RRS 28.

14 THE FINISH

The finishing line will be between a staff displaying a blue flag on the RC vessel and the course side of the finishing mark at the other end.

15 PENALTY SYSTEM

- 15.1 For the 49er, 49er FX and NACRA 17 classes, RRS 44.1 and RRS P2.1 are changed so that the Two-Turns Penalty is replaced by One-Turn Penalty.

- 15.2 Penalties for breaches of rules marked **[SP]** will be:

Sailing Instructions	Penalty	Score to be added
19.2.1 (Check Out)	1	To the first sailed race of the day for failure to check out.
19.2.2 (Check In)	1	To the last sailed race of the day for failure to check in.
(If there is only one race sailed that day total penalty point will be 1 for breaching SI 19.2.1 & 19.2.2)		
19.3 (Retirement)	1	To the last sailed race of the day.
21.5 (Event Limitation Mark missing)	1	To all races sailed on that day.

- 15.3 The scores of other boats shall not be changed; therefore, two boats may receive the same score. However, the penalty shall not cause the boats score to be worse than the score for DNF. The RC/Technical Committee (TC) may protest a boat when they consider the standard penalty to be inappropriate.
- 15.4 **[NP]** A boat that has been penalised with a standard penalty can neither be protested for the same incident by another boat nor can another boat request redress for this RC action. This changes RRS 60.1, 63.1 and Appendix A5.

16 TIME LIMITS AND TARGET TIMES

- 16.1 The time limits and target times in minutes are as follows:

Event	Target Time	First Mark Time Limit	Finishing Window	Time Limit
ILCA 7, ILCA 6 & 470 (Mixed)	45	25	10	60
49er, 49er FX, RS:X (M) & RS:X (W)	25	15	10	40
NACRA 17 (Mixed)	25	15	10	40
iQ FOiL (M) & iQ FOiL (W) (Course Race / Sprint Slalom)	20 / 12	15 / 6	10 / 05	30 / 20

- 16.2 If no boat has passed the first mark within the first mark time limit the race will be abandoned.
- 16.3 Failure to meet the target time will not be grounds for redress. This changes RRS 62.1(a).
- 16.4 Boats failing to finish within the finishing window, after the first boat sails the course and finishes, will be scored Did Not Finish (DNF) without a hearing. This changes RRS 35, A4 and A5.

17 PROTESTS AND REQUESTS FOR REDRESS

- 17.1 Add to RRS 61.1(a), "The protesting boat shall inform the RC at the finishing line of the boat(s) being protested, as soon as practicable after she finishes or retires".
- 17.2 Protest forms are available with the Beach Master and in the Jury Room. Protests and requests for redress or reopening shall be submitted to the Jury Office within the appropriate time limit.
- 17.3 For each course area, the protest time limit is 60 minutes after the last boat has finished the last race of the session/day, or the RC signals no more racing today, whichever is later.
- 17.4 Notices will be posted no later than 30 minutes after the protest time limit to inform competitors of hearings in which they are parties or named as witnesses. Hearings will be held in the Jury Room, beginning at the time posted.
- 17.5 Notices of protests by the RC, TC or Protest Committee will be posted to inform boats under RRS 61.1(b).
- 17.6 A list of boats that have been penalised for breaking RRS 42 will be posted.

18 SCORING

- 18.1 RRS B8 is deleted.
- 18.2 Six (06) races are required to be completed in each event to constitute a series.
- 18.3 When fewer than seven (07) races have been completed, a boat's series score will be the total of her race scores.
- 18.4 When seven (07) to nine (09) races have been completed, a boat's series score will be the total of her race scores excluding her worst score.
- 18.5 When ten (10) or more races have been completed, a boat's series score will be the total of her race scores excluding her two worst scores.
- 18.6 To request correction of an alleged error in posted race or series results, a boat may complete a scoring enquiry form available from the Race Office.
- 18.7 RS:X Men and Women will start together but scored separately. Same for iQ FOiL Men and Women; and 49er and 49er FX.

19 [NP] SAFETY REGULATIONS

- 19.1 **[DP]** Except for RS:X class, RRS 40.1 applies at all times whilst afloat.
- 19.2 **[SP]** Check-Out and Check-In Procedures:
 - 19.2.1 Before launching on each scheduled racing day, a competitor from each boat shall personally Check-Out, by signing on the forms placed at the Beach Master Desk located near the launching area/flag post ashore.
 - 19.2.2 After returning ashore, a competitor from each boat shall personally Check-In, by signing on the forms placed at the Beach Master Desk, within the protest time limit.
- 19.3 **[SP]** A boat that retires from a race shall notify the RC as soon as possible and shall complete a retirement declaration form at the Beach Master no later than the protest time limit.
- 19.4 **[DP]** When the RC displays flag V with repetitive sounds, all boats and official and support vessels shall monitor the RC radio channel for that course area for search and rescue instructions. This may be to collaborate with rescue tasks and shall stay in the course area until flag V is removed, or the "All-Clear" has been confirmed by the Course Race Officer (CRO) or the Principal Race Officer (PRO). This changes RRS 37.

20 [DP] REPLACEMENT OF CREW OR EQUIPMENT

- 20.1 Substitution of competitors will not be allowed without prior written approval of RC.
- 20.2 **[DP]** Substitution of damaged or lost equipment is not allowed unless authorized in writing by the TC/RC. Requests for substitution shall be made to the TC/RC at the first reasonable opportunity, which may be after the race.

- 20.3 If the substitution was made on the water before or between races, both the damaged and the equipment substituted shall be presented to the TC/RC after the end of the day's racing. Repairs or replacements required afloat may be approved after the race provided that either the RC or the TC afloat is notified before the next race.

21 [DP][NP] EQUIPMENT AND MEASUREMENT CHECKS

- 21.1 A boat or equipment may be inspected at any time for compliance with the class rules, NoR and SI.
- 21.2 **[DP]** When instructed by a member of the TC on the water, a boat shall proceed immediately to a designated area for inspection.
- 21.3 All competitors shall present their boats for scrutiny by the TC before the start of the event. Boats shall be presented as directed by TC.
- 21.4 Measurements will take place at the boat park of INWTC (Mbi).
- 21.5 Once a boat has completed measurements, the hull shall not be removed from the boat park without the permission of the TC.
- 21.6 **[SP]** Following breaches of equipment and measurement checks will result in a Standard Penalty.
- (a) Event Limitation Mark missing.

22 [DP] EVENT ADVERTISING

- 22.1 Competitor advertising will be restricted to World Sailing Regulation 20, Advertising Code.
- 22.2 Boats may be required to display advertising chosen and supplied by the Organising Authority. If this rule is broken, World Sailing Regulation 20.9.2 applies.

23 OFFICIAL VESSELS

Official vessels will be marked as follows:

RC Starting Vessel for Race Area A	RC A
RC Starting Vessel for Race Area B	RC B
Jury	JURY
Principal Race Officer	PRO
Technical Committee	TC
Rescue/Safety	RESCUE
Press/Media	MEDIA
Spectators	SPECTATORS
Coach/Support Boats	COACH / SUPPORT WITH CLUB BURGEE /FLAG

24 [DP][NP] SUPPORT/ COACH VESSELS

- 24.1 Except when participating in rescue operations, coaches and other support persons shall be required to stay outside areas where boats are racing from the time of the warning signal for the first fleet to start until all boats have finished or retired.
- 24.2 The areas the boats are racing can be defined as the area inside the course and within 100m of any mark, lay-line, starting line, finishing line or any area where any boat that is racing is sailing or may sail.
- 24.3 Support vessels shall clearly display a white flag bearing the club code of the boats they are supporting OR the club burgee along with (Coach/ Support Flag). No other flags or identification shall be displayed by support vessels.
- 24.4 Personnel on board support vessels are required to wear a life jacket or personal floatation device whilst afloat.
- 24.5 Support vessels can carry a VHF radio.

24.6 The Organising Authority may at its discretion refuse support vessels entry to the venue if they are deemed unsuitable.

25 [DP] TRASH DISPOSAL

Boats shall not intentionally put trash in the water. Trash may be placed aboard support or official vessels. On shore, trash must be placed in garbage bins.

26 [DP][NP] RADIO COMMUNICATION

Except in an emergency, a boat that is racing shall not make voice or data transmissions and shall not receive voice or data communication that is not available to all boats.

27 PRIZES

27.1 Prizes will be awarded to the top 3 boats in each event.

27.2 Other prizes may be awarded, such as for sportsmanship, exemplary behaviour and rules compliance during the championship, at the discretion of the Organising Authority.

28 RISK STATEMENT AND DISCLAIMER OF LIABILITY

RRS 3 states: 'The responsibility for a boat's decision to participate in a race or to continue to race is hers alone.' By participating in this event each competitor agrees and acknowledges that sailing is a potentially dangerous activity with inherent risks. These risks include strong winds and rough seas, sudden changes in weather, failure of equipment, boat handling errors, poor seamanship by other boats, loss of balance on an unstable platform and fatigue resulting in increased risk of injury. Inherent in the sport of sailing is the risk of permanent, catastrophic injury or death by drowning, trauma, hypothermia or other causes. Competitors participate in the event entirely at their own risk. The Organising Authority, or any other race officials and volunteers, will not accept any liability for material damage or personal injury or death sustained in conjunction with or prior to, during, or after the regatta on water or on shore.

29 [DP][NP] INSURANCE

Each participating boat shall be insured with adequate and valid third-party liability coverage.

30 [DP][NP] MEDIA RIGHTS, CAMERAS AND ELECTRONIC EQUIPMENT

30.1 By participating in this event, competitors and their support team automatically grant to the Organising Authority and any event sponsors, the right in perpetuity to make, use, and show at their discretion, any photographs, audio and video recordings, and other reproductions of them made at the venue, or on the water from the time of their arrival at the venue, until their final departure, without compensation.

30.2 Boats may be required to carry cameras, sound equipment or positioning equipment as specified by the Organising Authority. Information from such equipment shall not be used by a boat as evidence in a hearing. This changes RRS 63.6.

30.3 The equipment provided, once placed on the boat as instructed by the Organising Authority, shall not be manipulated by the competitor or the support person in any way, except when so required by the Organising Authority.

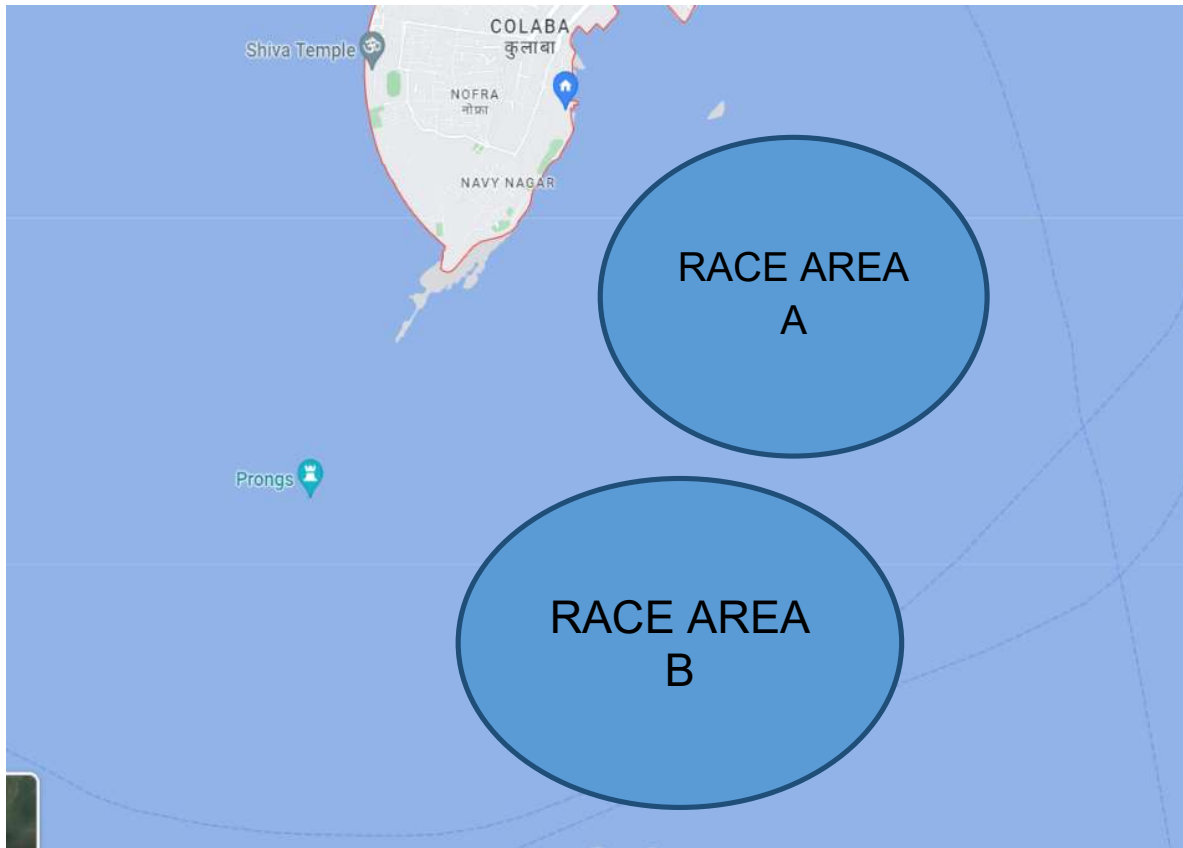
30.4 Competitors may be required for media interviews during the period of the event.

Addendum - A**SCHEDULE OF EVENTS AND RACES**

Schedule of events & practice race is as mentioned below:

Date	Time	Event	Remarks
13 Nov 2022	0900 h – 1800 h	Registration and Measurement	Detailed schedule will be posted by TC
14 Nov 2022	0900 h – 1200 h	Registration and Measurement	
	1100 h	Briefing for competitors	INWTC (Mbi) boat shed
	1200 h – 1230 h	Lunch	
	1400 h	Practice race for Session 1 of Race Area A & B	
	1440 h	Practice race for Session 2 of Race Area A	
Date	Race Area A		Race Area B
	Session 1	Session 2	
15 Nov to 19 Nov 2022	NACRA 17 (Mix), 49er & 49er FX and RS:X (M & W)	iQ FOiL (M & W)	470 (Mix), ILCA 7 and ILCA 6
20 Nov 2022	Spare Day		Award ceremony (1730 h)

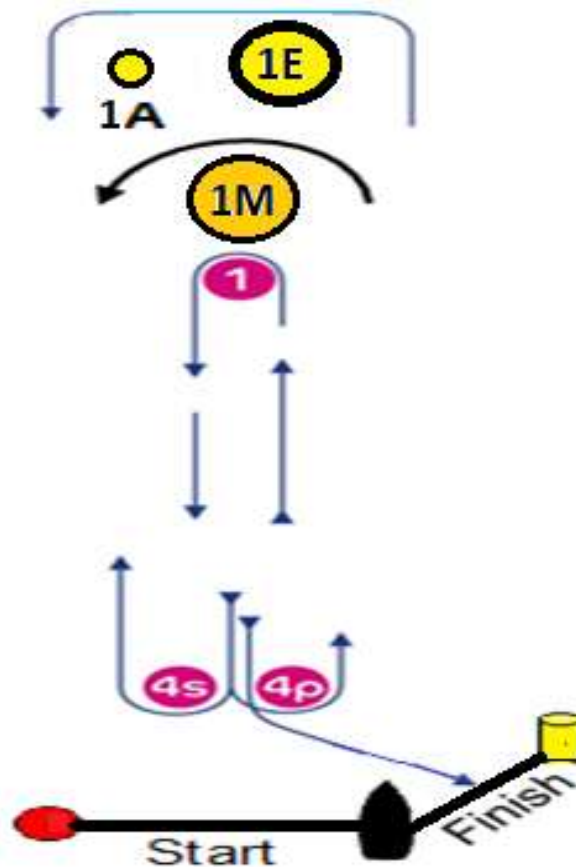
RACE AREAS A & B



RACE AREA A

Windward /Leeward Course

NACRA 17 (Mix), 49er & 49er FX, RS:X (M & W) and
iQ FOiL (M & W) Course Racing

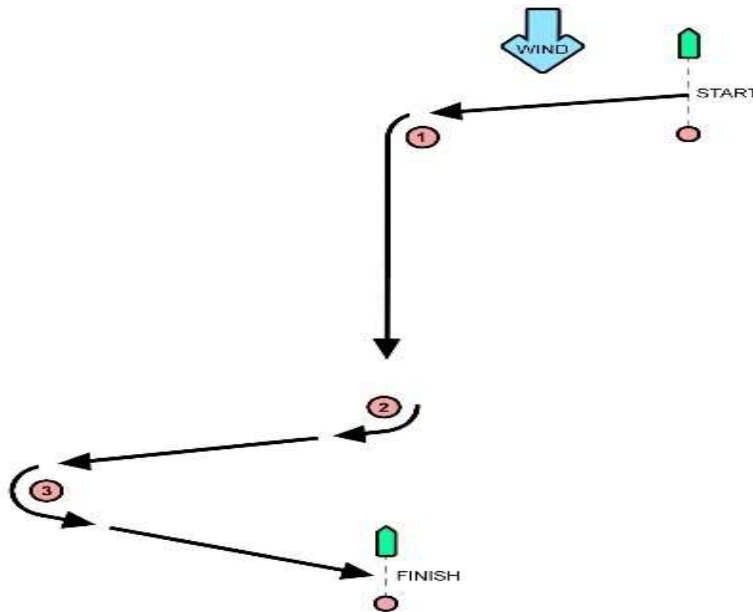


Signal	Mark Rounding Order
LR 2	Start – 1 – 4S/4P – 1 – 4P – Finish
LMR 2	Start – 1M – 4S/4P – 1M – 4P – Finish
LEAR 2	Start – 1E – 1A – 4S/4P – 1E – 1A – 4P – Finish
LR 3	Start – 1 – 4S/4P – 1 – 4S/4P – 1 – 4P – Finish
LMR 3	Start – 1M – 4S/4P – 1M – 4S/4P – 1M – 4P – Finish
LEAR 3	Start – 1E – 1A – 4S/4P – 1E – 1A – 4S/4P – 1E – 1A – 4P – Finish

RACE AREA A

iQ FOiL

Sprint Slalom Course



Signal	Mark Rounding Order
SD 3	Start – 1 – 2 – 3 – Finish

MARKS

MARKS (Sprint Slalom Course)	Starting marks	RC vessel with a staff displaying an orange flag on starboard end and a red ball mark at the port end.
	Finishing marks	RC vessel with a staff displaying a blue flag on the port end and a red ball mark on starboard end.
	Marks 1, 2 & 3	Red cylindrical marks

STARTING PROCEDURE

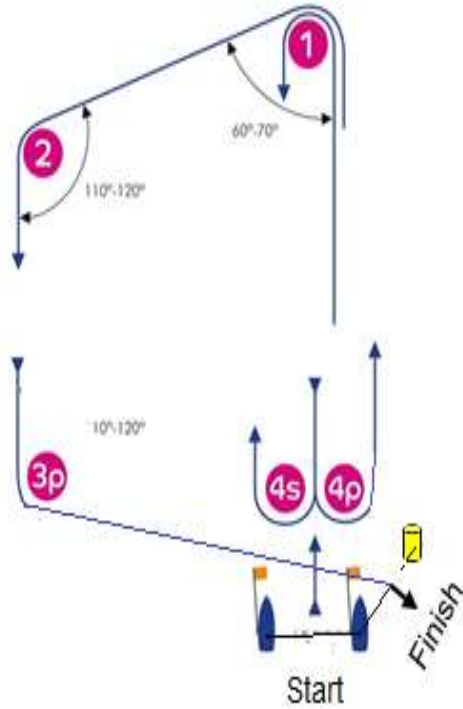
Minutes before Starting signal	Visual signal	Sound signal	Meaning
3	Class flag displayed	One	Warning signal
2	U or Black flag displayed	One	Preparatory signal
1	U or Black flag removed	One long	One-minute signal
0	Class flag removed	One	Starting signal

RACE AREA B

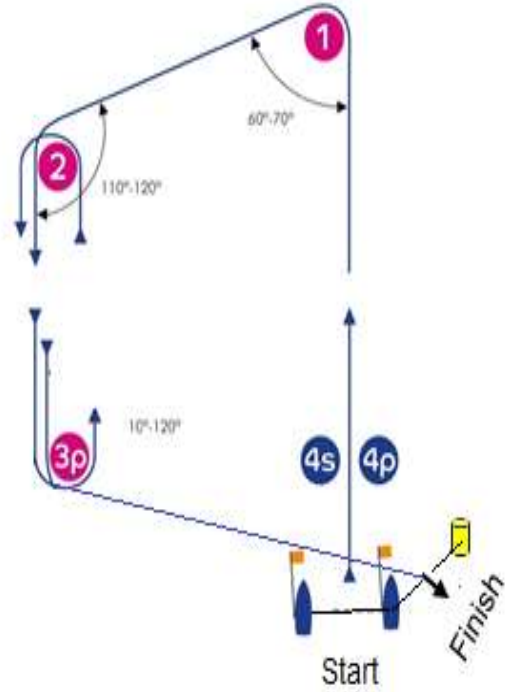
Trapezoid Course

470 (Mixed), ILCA 7 and ILCA 6

I



O



Signal	Mark Rounding Order	Signal	Mark Rounding Order
I 2	Start – 1 – 4S/4P – 1 – 2 – 3P – Finish	O 2	Start – 1 – 2 – 3P – 2 – 3P – Finish
I 3	Start – 1 – 4S/4P – 1 – 4S/4P – 1 – 2 – 3P – Finish	O 3	Start – 1 – 2 – 3P – 2 – 3P – 2 – 3P – Finish
I 4	Start – 1 – 4S/4P – 1 – 4S/4P – 1 – 4S/4P – 1 – 2 – 3P – Finish	O 4	Start – 1 – 2 – 3P – 2 – 3P – 2 – 3P – 2 – 3P – Finish