

APPENDIX 3

Course and waypoints

A3.1 COMMUNICATION WITH COMPETITORS

The Race Committee will communicate with competitors on VHF Channel 77, with mobile phone given by the OA or with Satellite telephone given by the OA. The communication system will be explained during the Safety Meeting planned on Nov 04^h.

A3.2 RACE COURSE

The course will be from Venice to Genova leaving Sicily on starboard and passing between Marettimo Island and Favignana Island, leaving Ustica Island on port, Capri Island on port (AMALFI Gate), Ischia Island on port, Giglio Island on starboard, Gorgona Island on port (PISA Gate).

There will be a number of virtual gates during the race. Boats are requested to pass through all the virtual gates.

Virtual gates positions

43°42',3 N 013°39',9 E	Ancona	43°42',3 N 013°53',8 E
41°53,6 N 016°17',9 E	Vieste	41°53,7 N 016°30',2 E
40°43',4 N 018°05',2 E	Brindisi	40°44',9 N 018°18',8 E
8°52',7 N 017°15',6 E	Crotone	38°52',3 N 017°28',5 E
37°03',9 N 013°56',4 E	Marina di Licata	36°56',9 N 013°56',5 E

Boats are required to pass the imaginary line that connects the waypoints except in the attempt to reach a harbour or a pitstop:

39°01',8 N 017°16',0 E	38°51',6 N 017°02',7 E	To starboard
37°55',9 N 012°06',6 E	38°00',4 N 012°05',0 E	To port
37°54',2 N 012°15',2 E	38°00',4 N 012°15',2 E	To starboard
38°37',7 N 013°03',8 E	38°36',6 N 013°19',0 E	38°47',5 N 013°19',0 E To port

A3.3 Starting mark in Venice and finishing mark in Genova will be white cylindrical. Finishing mark will have a strobe light.

A.3.4 The starting line in Venice will be between a staff displaying an orange flag on the race committee boat at the starboard end and the course side of the starting mark such as defined in A.3.3. See A3.9

A.3.5 FINISH

Boats are required to call RC on VHF 77 or mobile +393483301075 when a 2Nm from the finishing line.

The finishing line will be inside a circle of 0,1Nm radius with center at 44°22'550N – 08°59'500E.

The finishing line will be between a staff displaying a blue flag on the race committee boat and the finishing line such as defined in A.3.3. See A3.10.

A.3.6 Radio watch - AIS - tracker
VHF channel for the race is 77.

Competitors shall keep permanent watch on both channel 16 and 77.

AIS transponders and trackers of each boat shall be all time on function (transmission and reception).

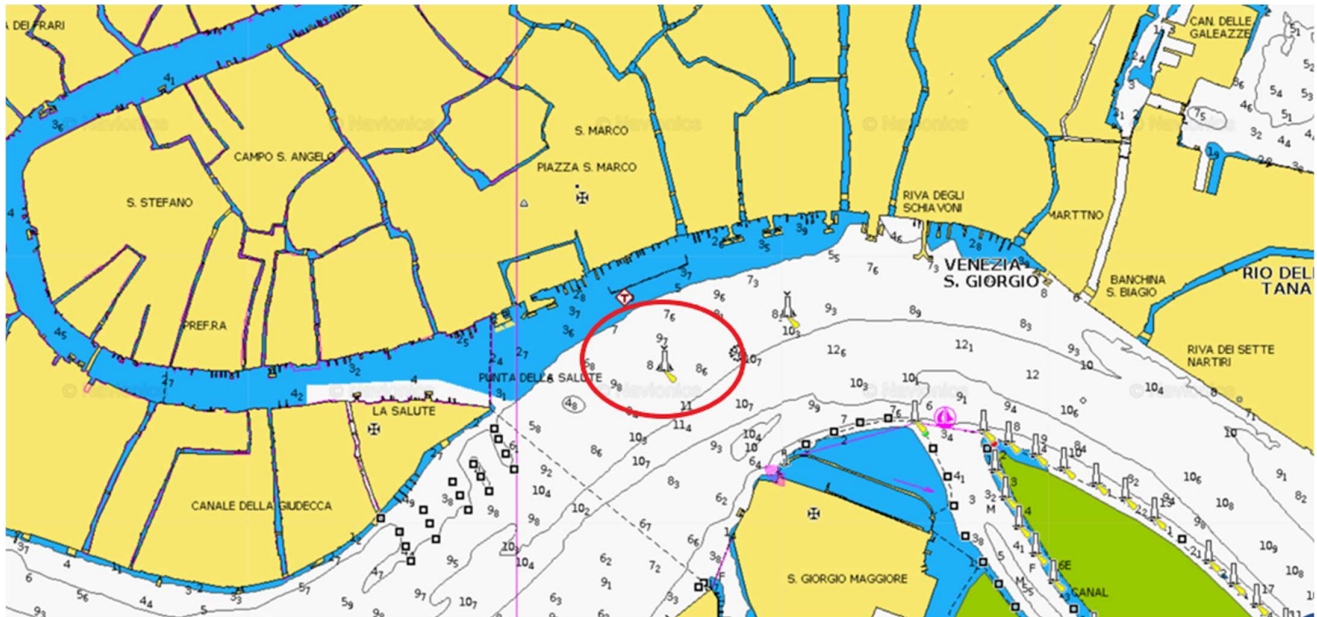
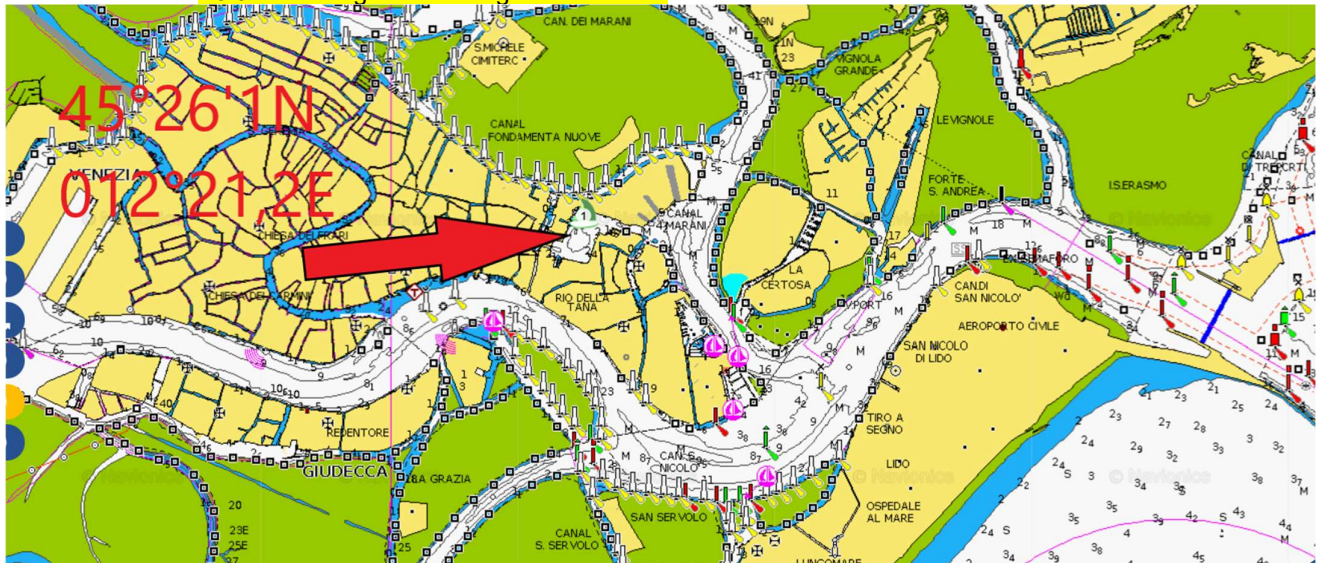
Mobile and Satellite telephones of each boat shall be all time on function

A3.7 OA will plan to support boats during the race with ashore teams with spare parts and rigging items. Boats are required to call using mobile, satellite or VHF77 the Safety Manager asap at any time they intend to have support. Safety Manager, once informed about the nature of the support requested, will define how and where the ashore team will meet the each other. Safety Manager can decide not to give support to a boat if any technical needing will not meet. This will not be ground for any request of redress.

A3.8 General Chart



A3.9 – Mooring and Starting Area Venezia



A3.10 - Finishing Line and Mooring in Genova

