



**SAILING CLUB "JUGO"
MALI LOŠINJ**



40. LOŠINJ REGATTA

Regatta of Lošinj Olympians

OPEN

September 10th - September 11th 2022.

SAILING INSTRUCTIONS

ORGANIZING COMMITTEE

***Vedran Kabalin
Sanjin Krstaić
Gilberto Fazlić
Ronald Spišić***

PROTEST COMMITTEE

***Zdravko Kelečić, president
Berislav Manestar
Miljenko Sokolić***

RACE OFFICE

***Berislav Manestar, president
Zdravko Kelečić
Miljenko Sokolić***

SAR

***Lučka Kapetanija Rijeka
Ispostava Mali Lošinj***

MEDICAL CARE

***Dom Zdravlja- Mali Lošinj
Dr. Branko Lakner***

1. RULES

- 1.1. The regatta will be governed by the Racing Rules of Sailing 2021 -2024 (RR), Sailing Instructions and Notice of Race. In case of non compliance, the Croatian language shall prevail.
- 1.2. All outboard engines and anchors shall be removed.
- 1.3. WS Advertising Code will apply. All boats shall display advertisements on the first 20% of hull length given by the organizer.

2. NOTICE TO COMPETITORS

Before the start of the first race Notices to competitors will be posted on the official notice board located in the front of Race Office at Tourist Board Office, Priko 42, 51550 Mali Lošinj

3. CHANGES TO SAILING INSTRUCTIONS

Any change to the Sailing Instructions will be published until 9.00 for each day of racing. Any change to the schedule of races shall be published until 21.00 on the previous day of racing.

4. SIGNALS ASHORE

- 4.1. All signals ashore shall be displayed on the boat of the Racing Committee in the port.
- 4.2. When the AP flag is displayed ashore: Races not started are postponed, preparatory signal shall be sounded earliest 30 minutes after AP flag is lowered.

5. RACES SCHEDULE

- 5.1. Preparatory signals for each race as follows:

Saturday, 10.09	10:55	Warning signal – Race 1 (Att. 1 – Coastal Race)
Sunday, 11.09	09:55	Warning signal – Race 2 (Att. 2 – Windward - leeward)
		After Race 2– Race 3 (Att. 2 – Windward - leeward)

- 5.2. One coastal and two windward - leeward races are scheduled.
- 5.3. On the last day of racing, preparatory signal shall not be sounded after **16:00** hours.

6. DIVISIONS / GROUPS

- 6.1. Boats shall be divided into Groups based on the LOA stated in their Boat Permit, as follows:

Group	X	IX	VIII	VII	VI	V	IV	III	II	I
Loa	< 6,45	6,46 7,10	7,11 7,70	7,71 8,45	8,46 9,40	9,41 10,25	10,26 11,10	11,11 12,00	12,01 13,49	> 13,5

- 6.2. In case a Group consists of less than three (3) boats, boats will be moved to nearest Groups. This shall not be ground for Protest or Redress.
- 6.3. In case three (or more) identical boats register, a Monotype Group may be formed.

7. CLASS FLAG

Class flag will be flag “V” MSK.

8. THE START

- 8.1. All races shall start according to Rule 26. with preparatory signal 5 minutes before starting signal.
- 8.2. A boat that starts later than 10 (ten) minutes after her start signal will be scored DNS. This changes the A4 RRS rule.

7

9. PENALTIES

A boat scoring an OCS in navigation sailing shall be penalized with a 20% penalty as determined by Rule 44.3 (c). This is my A4 RRS rule.

10. PROTEST AND REQUESTS FOR REDRESS

- 10.1. In addition to complying with RRS 61.1, a protesting boat shall inform the Race Committee by voice or radio of her intention to protest and the identity of the protested boat(s) as soon as possible after finishing or retiring. This change RRS 61,1 a.
- 10.2. Protest forms are available at the race office. Protest shall be delivered there within the Protesting time limit.

- 10.3. Protesting time limit for the Coastal Race is 60 minutes after the protesting boats have finished the race. Protesting time limit for the windward - leeward Races is 60 minutes after the last boat has finished the race. The same time limit applies to requests for redress. This changes RRS 61.3 and 62.2.
- 10.4. Notices to inform competitors of hearings in which they are parties or named as witnesses will be posted 30 minutes after the protesting time limit. Notice about protest from the Racing Committee or Jury will be posted on the notice board for competitors according to Rule 61.1(b).
- 10.5. Breaking Sailing Instructions 1.2, 1.3. and 13 can not be ground for protest from boats. This changes Rule 60.1(a). Penalties for breaking Sailing Instructions 1.2, 1.3., 12., 13. and 15. may be less than DSQ.
- 10.6. Request for reopening a hearing shall be delivered no later than 30 minutes after the party requesting reopening was informed of the decision on that day. This changes RRS 66.

11. SCORING

For group ranking, scoring according to Appendix A4 of the RRS will be applied.

12. SAFETY REGULATIONS

A boat that retires from a race shall notify the race committee as soon as possible.

13. CHANGE OF EQUIPMENT OR CREW

13.1 Change of crew is allowed only with permission of the RC.

13.2 Change of lost or broken equipment is allowed only with permission of the RC. The request for any change must be presented as soon as possible.

14. EQUIPMENT AND MEASUREMENT CHECKS

A boat, boat equipment and crew member may be inspected at any time for compliance with the Sailing Instructions. On the water or after arriving in harbour, boat can be instructed by the Race Committee measurer to proceed immediately for inspection.

15. BOAT HOISTING LIMITATIONS

Boats shall not be hoisted during the days of racing without permission from the Race Committee.

16. RADIO COMMUNICATION – Official Race Comm is VHF Ch 72

A boat shall neither make radio transmissions while racing nor receive radio communications not available to all boats. This restriction also applies to mobile telephones.

17. PRIZES

See Notice of Race.

18. DISCLAIMER OF LIABILITY

Competitors participate in the regatta entirely at their own risk. See rule 4, Decision to Race. The organizing authority will not accept any liability for material damage or personal injury or death sustained in conjunction with or prior to, during, or after the regatta.

Attachment No. 1 – Coastal Race

All courses:

MARKS: Marks 1 and 2 will be orange buoys. Starting line is between orange buoy and RC Boat.

START: Starting line shall be between orange flag on RC boat on starboard and orange buoy on port end.

FINISH: Finish line shall be between blue flag near red lighthouse (ashore) on port and green lighthouse (pontoon) on starboard.

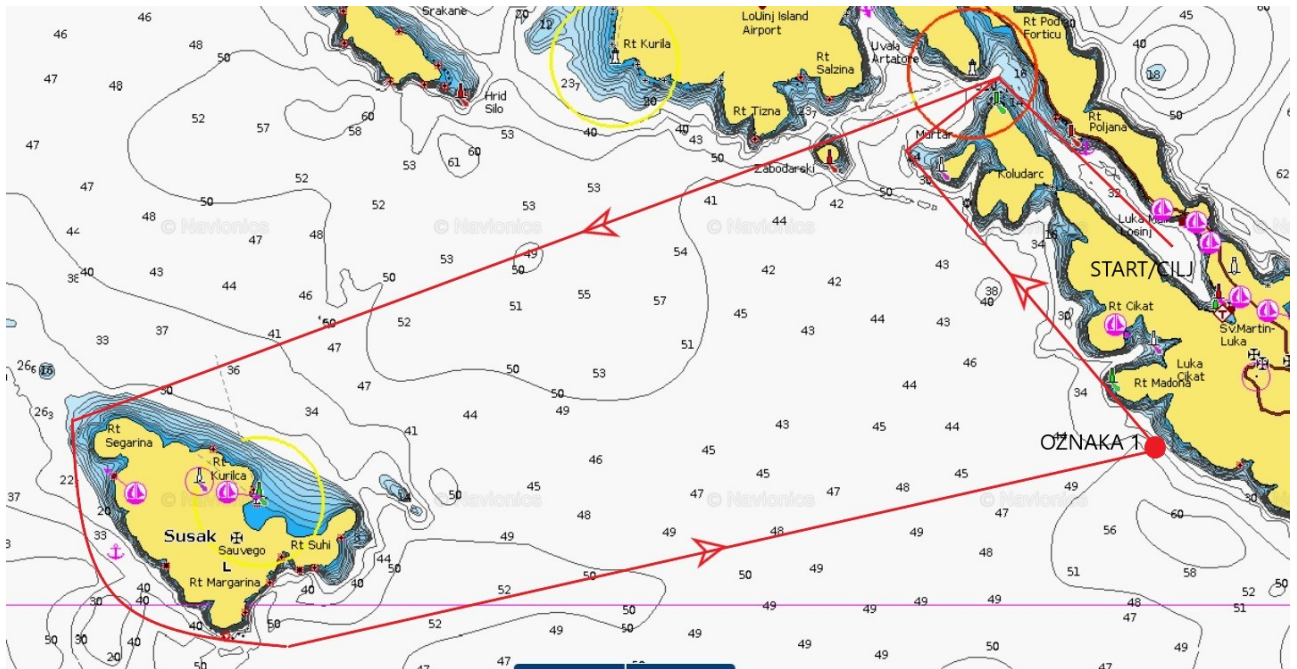
TIME LIMIT: Time limit is 19:00 hours on Saturday, September 11th 2021.

COURSE 1 (Pennant No. 1 displayed before or at warning signal):

START (port of Mali Lošinj) – island Susak – Mark 1 (Žalić - 44° 31.5' N, 014° 27.5' E) – **FINISH** (port of Mali Lošinj) - cca 22 nm. Island Susak and Mark 1 to be left on port.

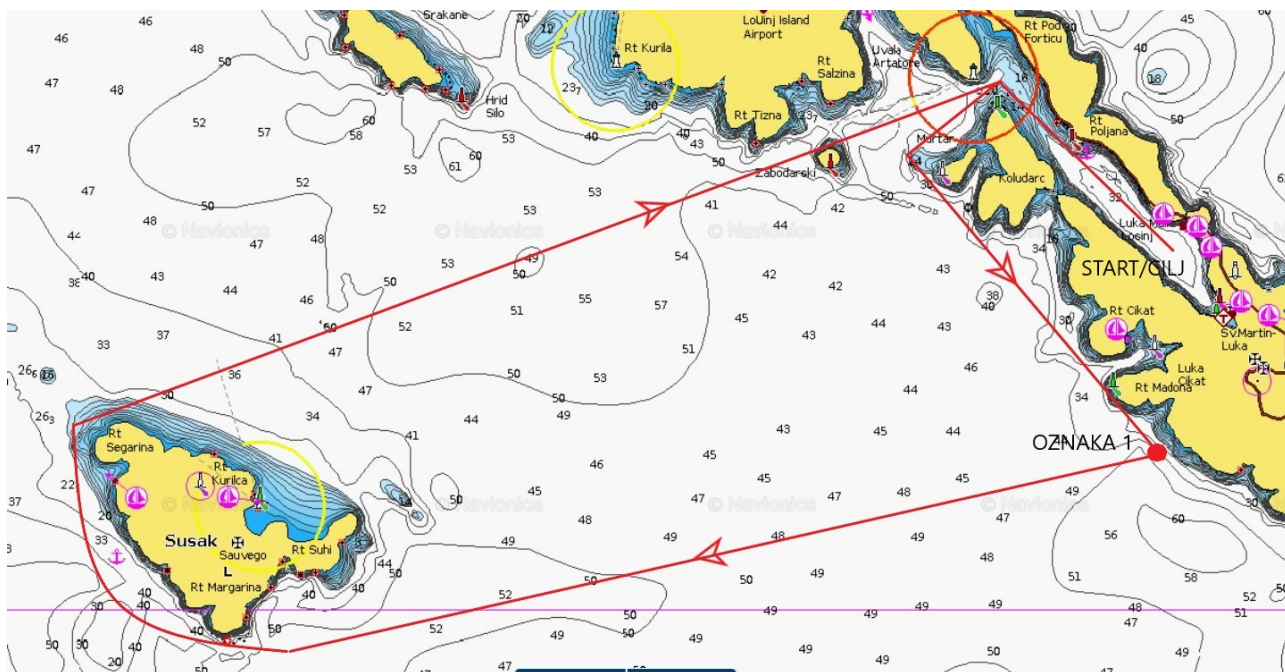
TEMPORARY FINISH: Shortened (temporary) finish at island Susak (Rt Margarina) and Mark 1. If no boat from a Group finishes, the shortened (temporary) finish time shall be calculated. At least one boat from a Group must pass the shortened (temporary) finish line.

Passing between islets Murtar and Koludarc, or through Privlaka straight is forbidden.



COURSE 2 (Pennant No. 2 displayed before or at warning signal): START (port of Mali Lošinj) - Mark 1 (Žalić - 44° 31.5' N, 014° 27.5' E) – island Susak – FINISH (port of Mali Lošinj). - cca 22 nm. Mark 1 and island Susak to be left on starboard..

TEMPORARY FINISH: Shortened (temporary) finish at Mark 1 and island Susak (rt Margarina). If no boat from a Group finishes, the shortened (temporary) finish time shall be calculated. At least one boat from a Group must pass the shortened (temporary) finish line. Passing between islets Murtar and Koludarc or through Privlaka straight is forbidden

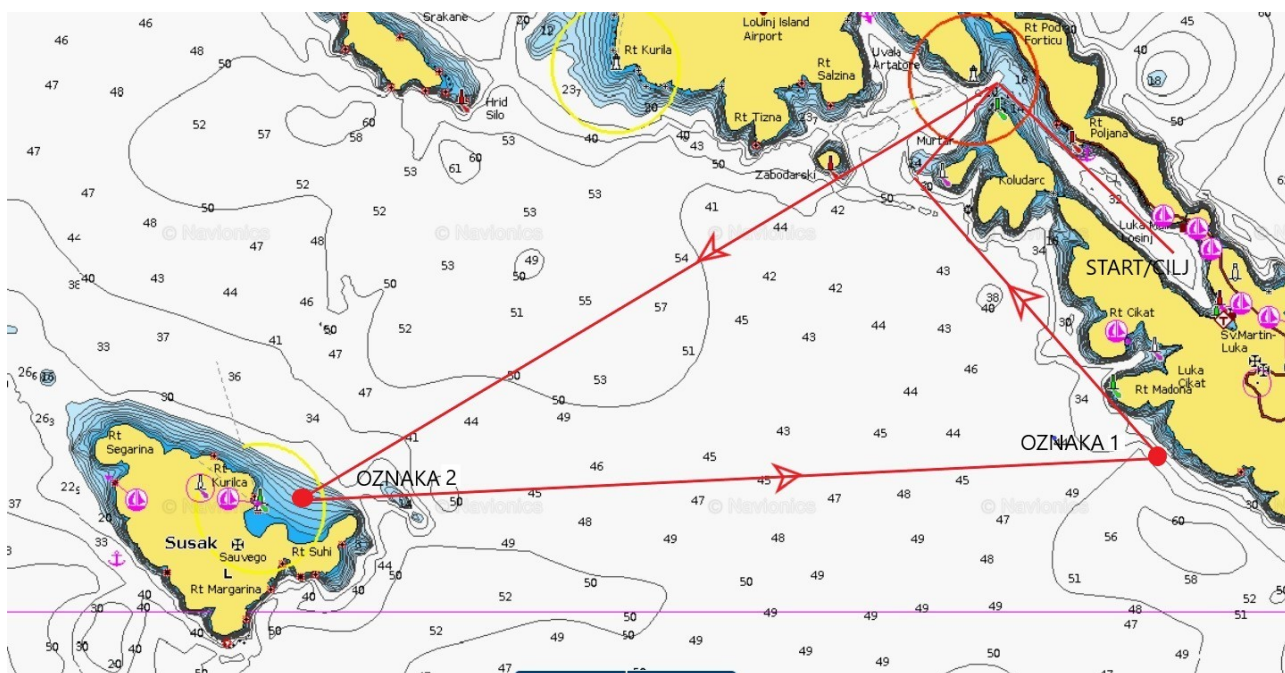


COURSE 3 (Pennant No. 3 displayed before or at warning signal):

START (port of Mali Lošinj) – Mark 2 – Mark 1 - FINISH (port of Mali Lošinj) - cca 18 Nm. Mark 1 and 2 to be left on port.

TEMPORARY FINISH: Shortened (temporary) finish at Mark 1 and 2. If no boat from a Group finishes, the shortened (temporary) finish time shall be calculated. At least one boat from a Group must pass the shortened (temporary) finish line.

Passing between islets Murtar and Koludarc or through Privlaka straight is forbidden

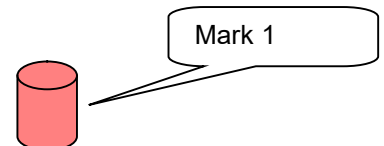
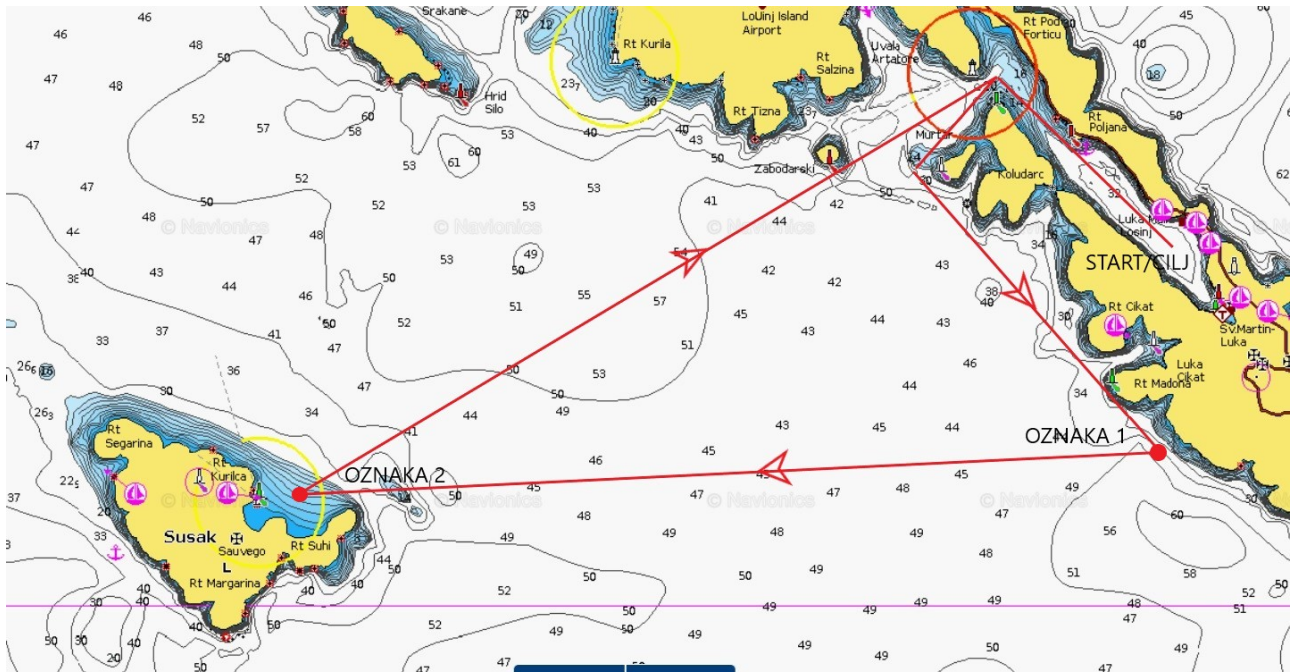


COURSE 4 (Pennant No. 4 displayed before or at warning signal!):

START (port of Mali Lošinj) – Mark 1 – Mark 2 - FINISH (port of Mali Lošinj) - cca 18 Nm.
Marks 1 and 2 to be left on starboard.

TEMPORARY FINISH: Shortened (temporary) finish at Mark 1 and 2. If no boat from a Group finishes, the shortened (temporary) finish time shall be calculated. At least one boat from a Group must pass the shortened (temporary) finish line.

Passing between islets Murtar and Koludarc or through Privlaka straight is forbidden



Attachment No. 2 – Windward - leeward

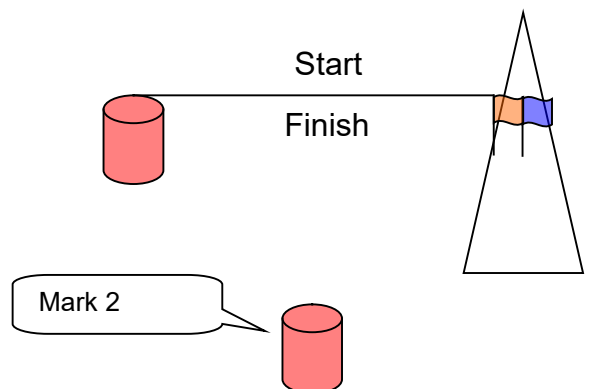
COURSE: START – MARK 1 – MARK 2 – MARK 1 – MARK 2 - FINISH. (cca 10 Nm).
Marks 1 and 2 to be left on port.

MARKS: Marks 1 and 2 shall be orange buoys.
Starting and finishing marks shall be orange buoy and RC boat.

START: Starting line shall be between orange flag on RC boat on starboard and orange buoy on port end.

FINISH: Finish line shall be between orange flag on RC boat and orange buoy.

TIME LIMIT: Time limit is 2 hours and 30 minutes after the starting signal.



Notifications:

Upon registration in the Race Office, bow numbers shall be provided for each boat. Bail for numbers is 100,00 kn and shall be returned after the numbers are returned to the Race Office after all races are sailed.

They made it happen:

General sponsors: *Mali Lošinj Tourist Board, City of Mali Lošinj*

Sponsors: *Mali Lošinj County Port Authority, Jadranka Hoteli, Grawe Osiguranje*

Media coverage: Radio Jadranka, www.otoci.net, www.burzanutike.com