

Placement of Event Limitation Marks



For Kites:

When sailing on STARBOARD tack, the event limitation mark must be placed on the LOWER tip, on the INSIDE of the kite.

For Hulls:

On the transom



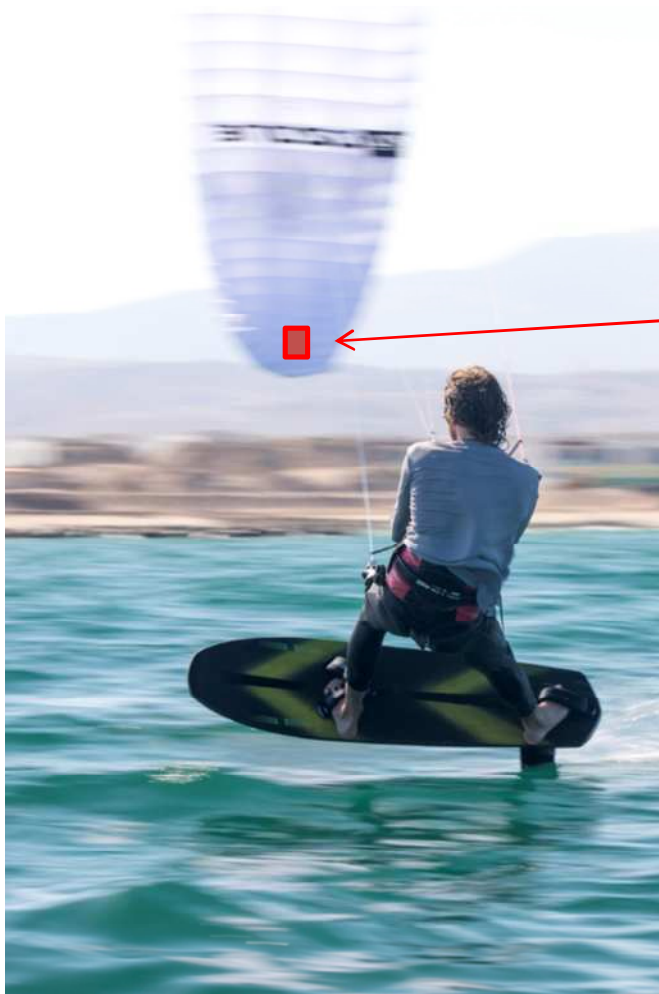
For Hydrofoil Systems:

The event limitation mark must be placed on the STARBOARD side of the mast, app. 5cm from the top of the mast.

The Sponsor Sticker must be placed on both rear sides of the hull

Class Insignia on the nose of the hull

Placement of WSCA Stickers



For Kites:

When sailing on PORT tack, the WSCA sticker must be placed on the LOWER tip, on the INSIDE of the kite.

For Hulls:

On the transom



Class Insignia on the nose of the hull

The Sponsor Sticker must be placed on both rear sides of the hull

For Hydrofoil Systems:

The WSCA sticker must be placed on the PORT side of the mast, app. 5cm from the top of the mast.