

2019 IKA KITEFOIL WORLD SERIES CAGLIARI

ACT SAILING INSTRUCTIONS – ASI

These ASIs complement the NoR/SI

Issued 02 October 2019

5 SCHEDULE

5.2.3 20 races are scheduled for the act.

5.3 No warning signal will be made after 1800 hours.

On the last day of the regatta no warning signal will be made after 1600 hours

This changes NoR/SI 5.3

5.8 There will be a competitors' briefing 1 hour before the first scheduled warning signal for that day.

5.9 No warning signal will be made before 12:00 hours except otherwise posted on the official notice board.

6 FORMAT

6.1 The format will be a single series.

7 STARTING AND FINISHING

7.6 The finishing line will be between a blue/white chequered flag on the finish race committee vessel and the course side of the nearby finish mark.

7.7 The finishing line race committee vessel is identified by a blue/white chequered flag. This changes RRS Race Signals.

9 COURSES AND RACING AREAS

9.4	Course Marks:	Red conical marks
	Finishing marks:	RC vessel and blue/white checkered cylindrical mark
	Starting marks	RC vessels, or
		RC vessel and orange/white checkered cylindrical mark

11 COMMUNICATION WITH COMPETITORS

- 11.1 The Official Notice board is online [here](#). Courtesy information will be posted on the Notice Board near the race office.
The Official Flag Pole is located at the terrace of the race office.
- 11.5 Class flag is a yellow flag with black IKA logo.
- 11.6 The race committee will communicate on VHF 72



QR Code for ONB

13 [DP] [NP] SAFETY REGULATIONS

- 13.5 [SP] Before leaving to race on each scheduled day, competitors shall personally sign out at the entrance to the launching area.
- 13.6 [SP] No later than the protest time limit for that day, competitors shall personally sign in at the entrance to the launching area.

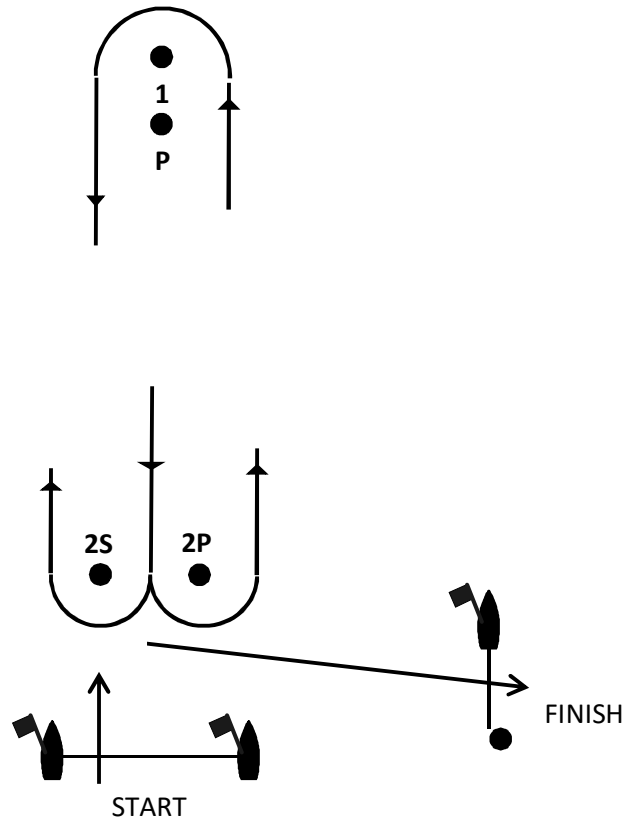
18 PROTESTS, PENALTIES AND REQUESTS FOR REDRESS

- 18.1.1 The protest time limit is 30 minutes after the last kiteboard has finished the last race of the day for that Class, or when AP over A, or N over A is displayed.

NoR/SI Addendum A is delete and replaced with:

Note: after rounding mark 1, mark P shall be left to port.

ADDENDUM A – COURSE DIAGRAMS

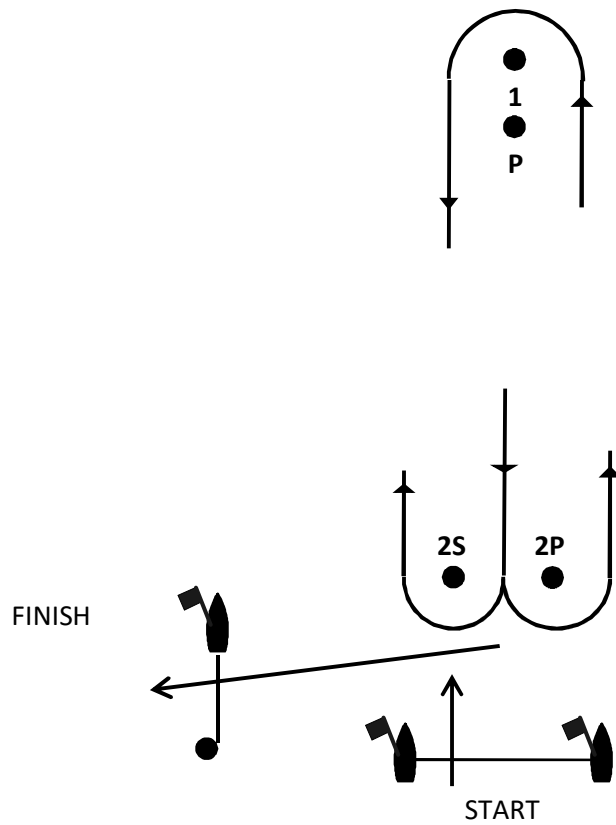


LP 1: Start – P – 1 – P – 2S/2P – Finish

LP 2: Start – P – 1 – P – 2S/2P – P – 1 – P – 2S/2P – Finish

LP 3: Start – P – 1 – P – 2S/2P – P – 1 – P – 2S/2P – P – 1 – P – 2S/2P – Finish

All distances and course angles are approximate.

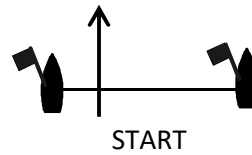
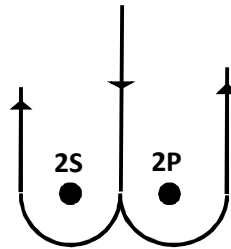
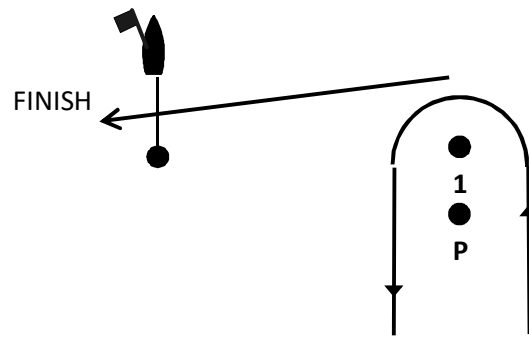


LS 1: Start – P – 1 – P – 2S/2P – Finish

LS 2: Start – P – 1 – P – 2S/2P – P – 1 – P – 2S/2P – Finish

LS 3: Start – P – 1 – P – 2S/2P – P – 1 – P – 2S/2P – P – 1 – P – 2S/2P – Finish

All distances and course angles are approximate.

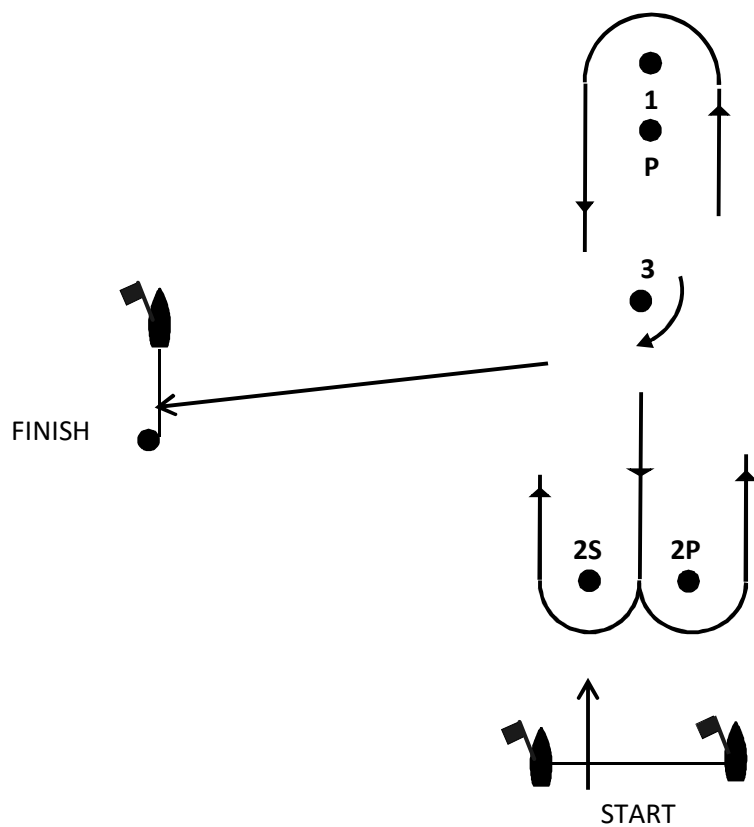


WP 2: Start – P – 1 – P – 2S/2P – P – 1 – Finish

WP 3: Start – P – 1 – P – 2S/2P – P – 1 – P – 2S/2P – P – 1 – Finish

WP 4: Start – P – 1 – P – 2S/2P – P – 1 – P – 2S/2P – P – 1 – P – 2S/2P – P – 1 – Finish

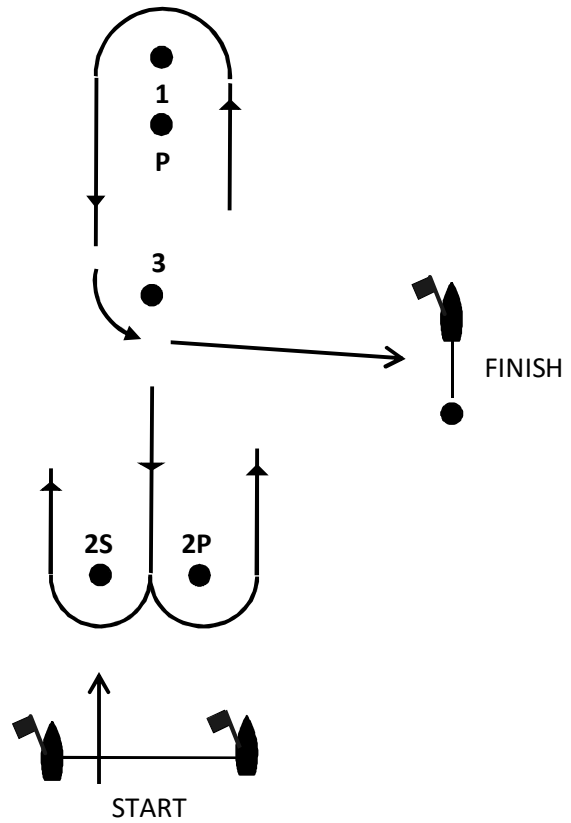
All distances and course angles are approximate.



MS 2: Start – P – 1 – P – 2S/2P – P – 1 – P – 3 – Finish

MS 3: Start – P – 1 – P – 2S/2P – P – 1 – P – 2S/2P – P – 1 – P – 3 – Finish

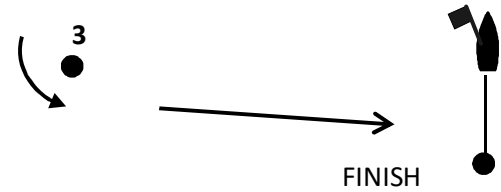
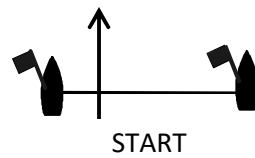
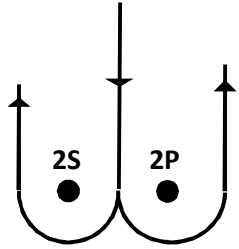
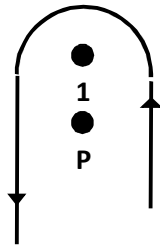
All distances and course angles are approximate.



MP 2: Start – P – 1 – P – 2S/2P – P – 1 – P – 3 – Finish

MP 3: Start – P – 1 – P – 2S/2P – P – 1 – P – 2S/2P – P – 1 – P – 3 – Finish

All distances and course angles are approximate.

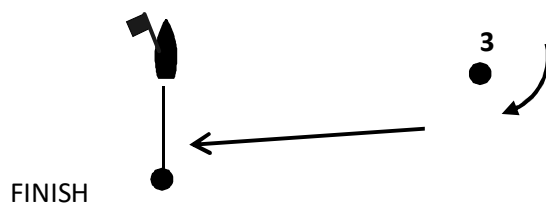
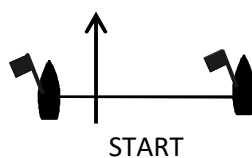
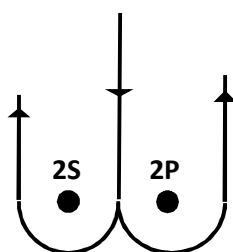
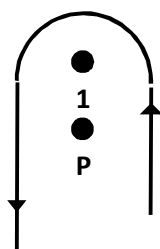


DP 1: Start – P – 1 – P – 3 – Finish

DP 2: Start – P – 1 – P – 2S/2P – P – 1 – P – 3 – Finish

DP 3: Start – P – 1 – P – 2S/2P – P – 1 – P – 2S/2P – P – 1 – P – 3 – Finish

All distances and course angles are approximate.



DS 1: Start – P – 1 – P – 3 – Finish

DS 2: Start – P – 1 – P – 2S/2P – P – 1 – P – 3 – Finish

DS 3: Start – P – 1 – P – 2S/2P – P – 1 – P – 2S/2P – P – 1 – P – 3 – Finish

All distances and course angles are approximate