



NOTICE TO COMPETITORS

Number	Time	Date
3	18:00 UTC	07 September 2019

From
The Organizing Authority

CHANGE TO NoR/SI

NoR/SI 2.1.2 (Support Team Regulations) is deleted.

NoR/SI 5.1 is deleted and replaced with:

5.1 The schedule will be as follows (all times are local time):

11 October 2019	Training	0900 – 1100 1500 – 1700
12 October 2019	Training	0900 – 1100 1500 – 1700
	On-site registration for athletes and support personnel – Sailing Venue	0900 – 1100
	Equipment Inspection – Sailing Venue	1200 – 1800
	Opening Ceremony – Katara Cultural Village	1930
13 October 2019	Technical Meeting – Retaj Al-Rayyan hotel	1000
	Competition – Qualification Series	1400
14 October 2019	Competition – Qualification Series	1400
15 October 2019	Competition – Semi Finals and Final Series	1400
	Awards ceremony	tba
16 October 2019	Competition – Semi Finals and Final Series	1400
	Awards ceremony	tba

NoR/SI 11.1 and 11.2 are deleted and replaced with

11.1 The official notice board is online here:

https://www.racingrulesofsailing.org/documents/event?event_id=687&name=2019-anoc-world-beach-games-qatar

Complementary information will be posted on a notice board in the venue.

11.2 The location of the complementary notice board and the official flagpole will be described in the LSI.

NoR/SI Addendum B is deleted and replaced with:

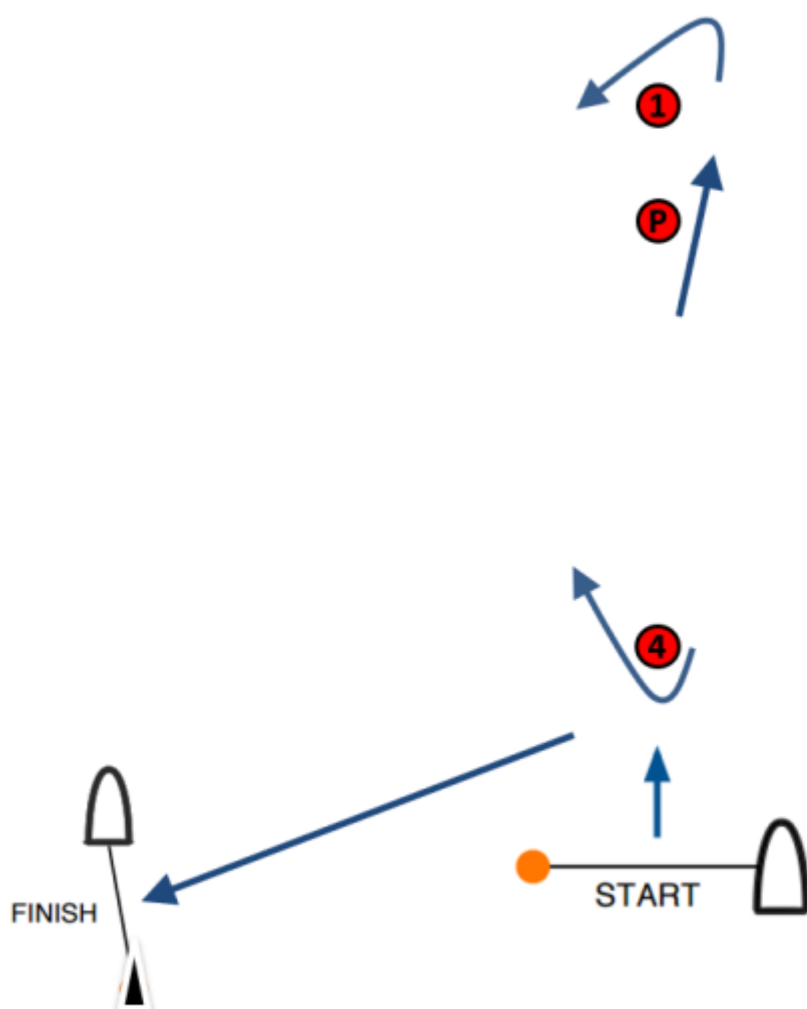
ADDENDUM B SCHEDULE OF RACES

Event Stage	13 October	14 October	15 October	16 October
	Warning Signal	Warning Signal	Warning Signal	Warning Signal
	# of Races	# of Races	# of Races	# of Races
Qualifying Series				
Kitefoil Racing Men	1400	1415		
	4	4		
Kitefoil Racing Women	1415	1400		
	4	4		
Semi Finals				
Kitefoil Racing Men A				1400
				2
Kitefoil Racing Men B				1410
				2
Kitefoil Racing Women A			1400	
			2	
Kitefoil Racing Women B			1410	
			2	
Final Series				
Kitefoil Racing Men				1500
				max 6
Kitefoil Racing Women			1500	
			max 6	

The schedule of races may be amended at any time pending weather conditions.

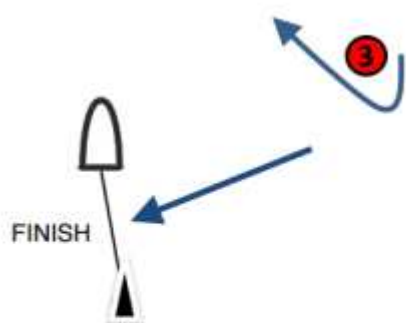
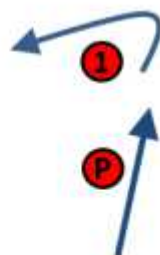
NoR/SI Addendum A is deleted and replaced with:

ADDENDUM A COURSE DIAGRAMS



- X 1: Start – Pp – 1p – Pp – 4s – Finish
 X 2: Start – Pp – 1p – Pp – 4s – Pp – 1p – Pp – 4s – Finish
 X 3: Start – Pp – 1p – Pp – 4s – Pp – 1p – Pp – 4s – Pp – 1p – Pp – 4s – Finish

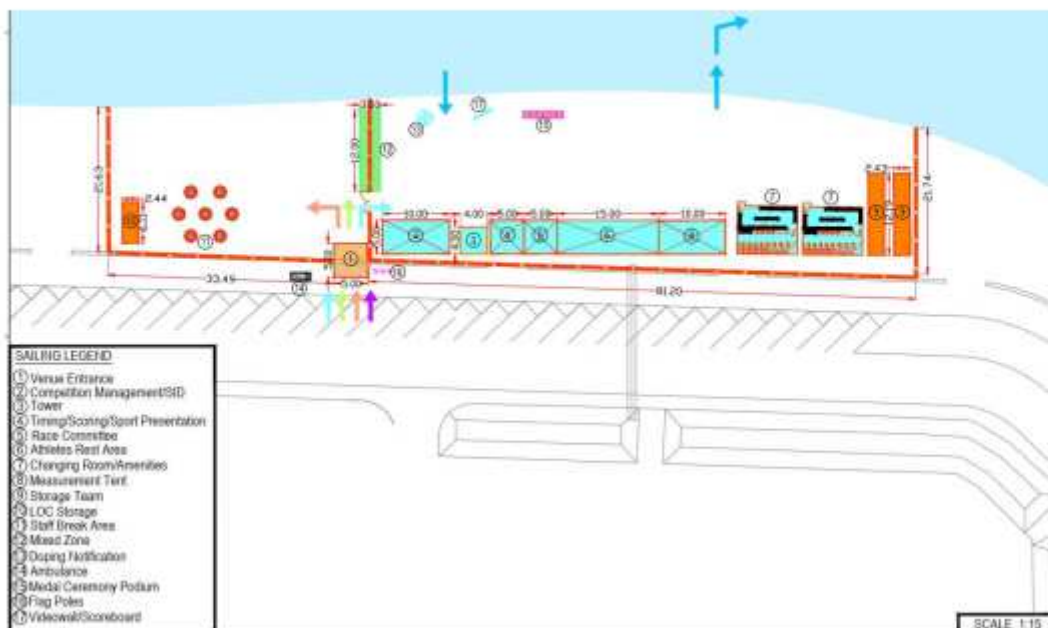
All distances and course angles are approximate.



- B 1: Start – Pp – 1p – 2p – 3s – Finish
 B 2: Start – Pp – 1p – 2p – 3s – 2p – 3s – Finish
 B 3: Start – Pp – 1p – 2p – 3s – 2p – 3s – 2p – 3s – Finish

All distances and course angles are approximate.

ADDENDUM C VENUE MAP



NoR/SI Addendum C is deleted and replaced with:

