



18th Göcek Autumn Race Week

“ATATÜRK CUP”

01st – 06th November 2020

Attachment GYC 2020 SSI #7.1 : Courses

***Rotalar ile verilen, YK Tekne(leri), şamandıralar ve diğer işaret noktalarının lokasyonları ile rotaların mesafeleri sadece fikir vermek için olup, bağlayıcı değildir ve düzeltme nedeni olamaz.**

***RC Vessel(s), Marks and buoys locations for the races and the courses will be approximately and shall not be grounds for a request for redress.**



GÖCEK YACHT CLUB

COURSE 1A - ROTA 1A

COASTAL COURSES / Coğrafik rotalar



COURSE (ROTA) 1A - FOR ALL CLASSES

FOR ALL CLASSES

START -

Göcek Adası to Startboard

Katrançık Adası to Port

Tavşan Adası to Port

Kızıl Ada to Port

Katrançık Adası to Port

Göcek Adası to Port

FINISH -

BÜTÜN SINIFLAR

START -

Göcek Adası Sancakta

Katrançık Adası İskelede

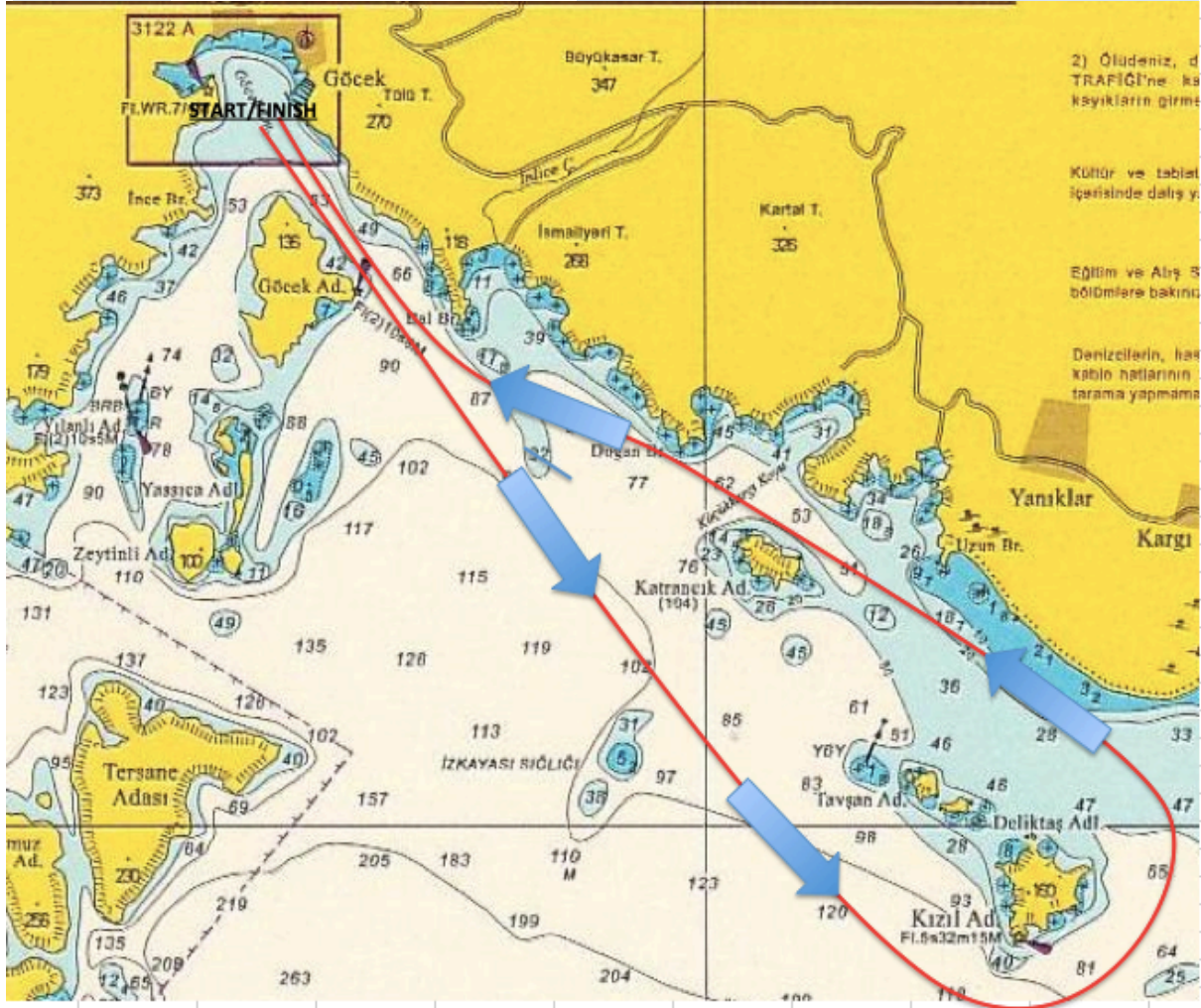
Tavşan Adası İskelede

Kızıl Ada İskelede

Katrançık Adası İskelede

Göcek Adası İskelede

FINISH -



The place of RC boat and marks at the starting and finishing lines are approximate.
Start ve finish hatlarındaki şamandıra ve komite botu yerleri yaklaşıktır.

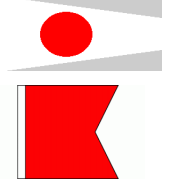




GÖCEK YACHT CLUB

COURSE 1B - ROTA 1B

COASTAL COURSES / Coğrafik rotalar



COURSE (ROTA) 1B - FOR ALL CLASSES

FOR ALL CLASSES

START -

Göcek Adası to Port

Zeytinli Adası to Port

Tavşan Adası to Port

Kızıl Ada to Port

Katrançık Adası to Starboard

Göcek Adası to Starboard

FINISH -

BÜTÜN SINIFLAR

START -

Göcek Adası İskelede

Zeytinli Adası İskelede

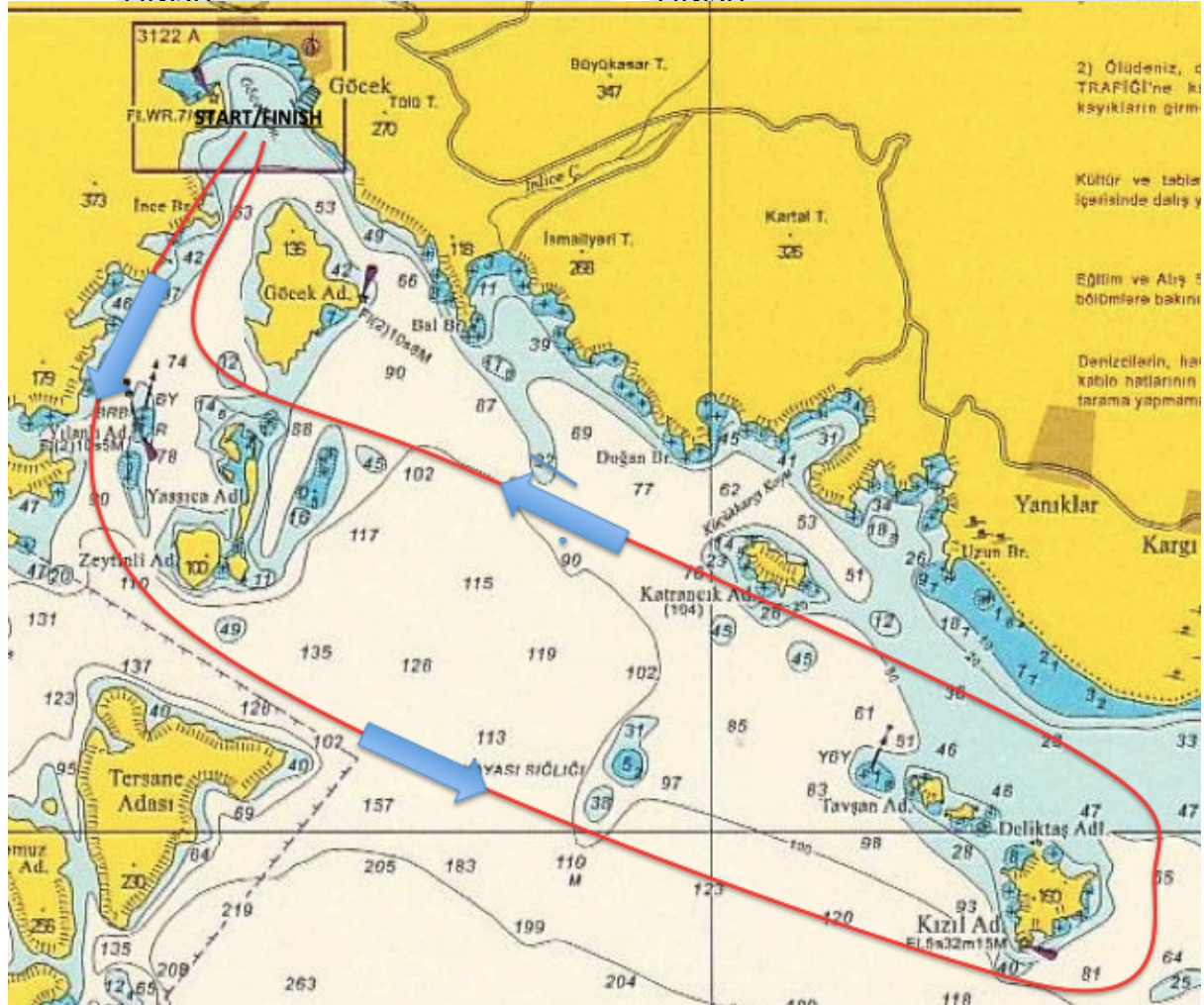
Tavşan Adası İskelede

Kızıl Ada İskelede

Katrançık Adası Sancak

Göcek Adası Sancak

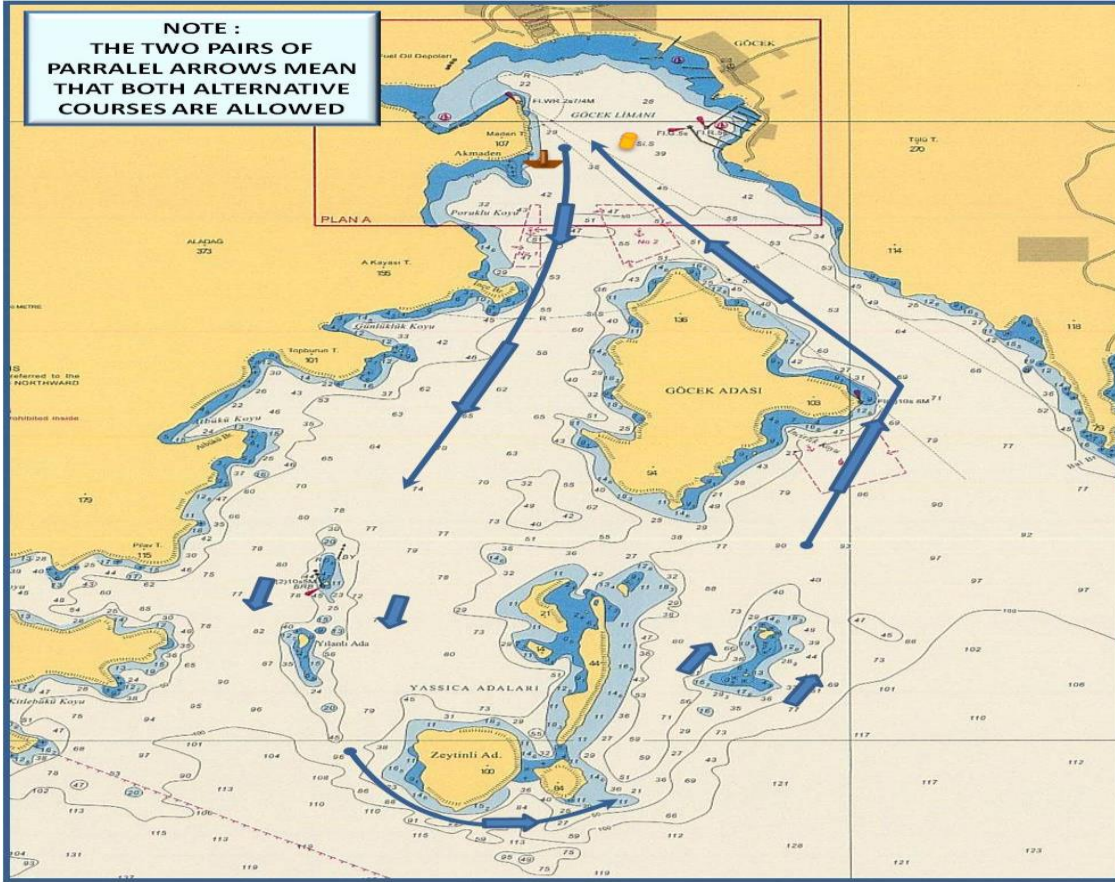
FINISH -



The place of RC boat and marks at the starting and finishing lines are approximate.
Start ve finish hatlarındaki şamandıra ve komite botu yerleri yaklaşıkştir.



COURSE (ROTA) 2A - IRC CLASSES

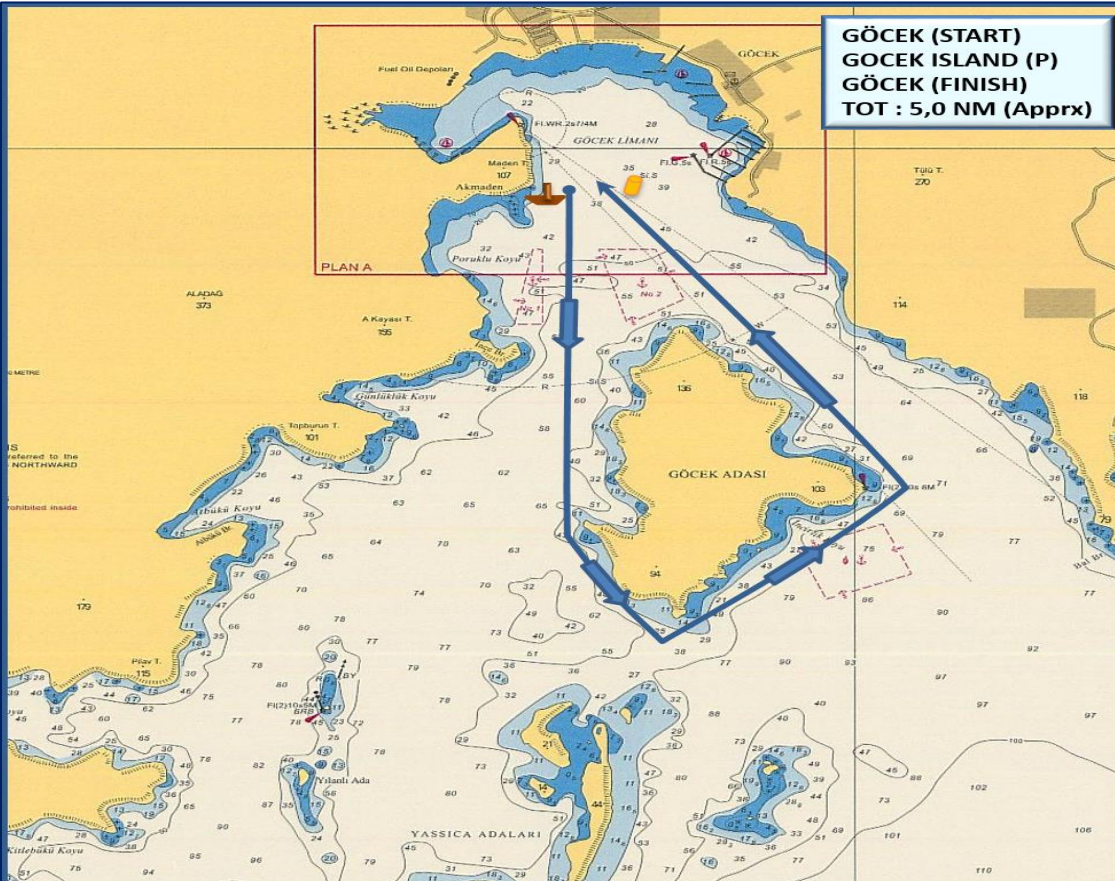


IRC CLASSES

START (GÖCEK)
GÖCEK ISLAND to port
YASSICA ISLAND to port
ZEYTİNLİ ISLAND to port
YASSICA ISLAND to port
GÖCEK ISLAND to port
FINISH (GÖCEK)
DISTANCE : ~ 7,5 NM

START (GÖCEK)
GÖCEK ADASI iskelede
YASSICA ADALARI iskelede
ZEYTİNLİ ADASI iskelede
YASSICA ADALARI iskelede
GÖCEK ADASI iskelede
FINISH (GÖCEK koy içi)
MESAFE : ~ 7,5 DM

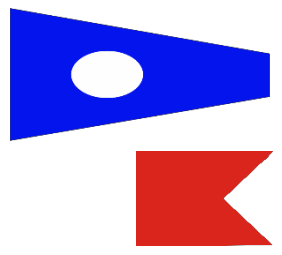
COURSE (ROTA) 2A – IRC CHARTER & CHARTER & FRESHMAN CLASSES



IRC CHRT. & CHARTER & FRESHMAN CLASSES

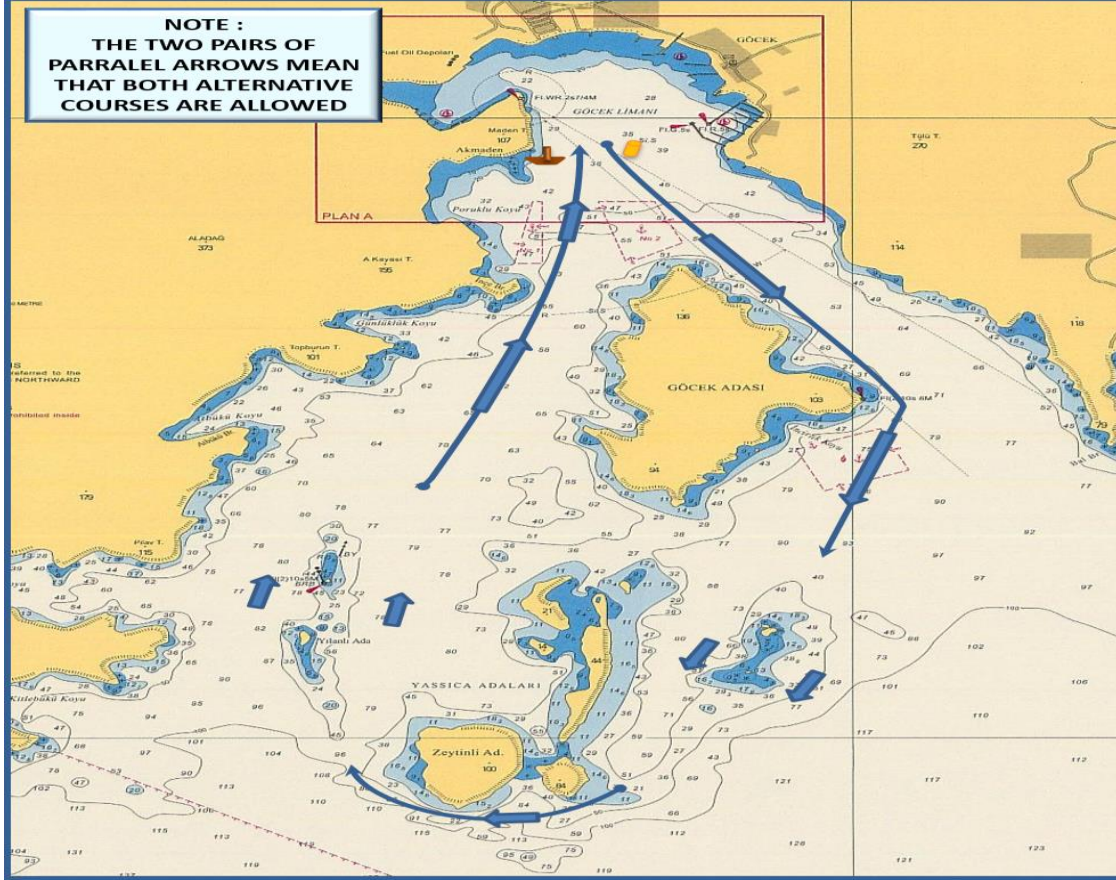
START (GOCEK)
GOCEK ISLAND to port
FINISH (GOCEK)
(~ 5,0 NM)

START (GÖCEK)
GÖCEK ADASI iskelede
FINISH (GÖCEK)
(~ 5,0 DM)



COURSE (ROTA) 2B - IRC CLASSES

NOTE :
THE TWO PAIRS OF
PARRALEL ARROWS MEAN
THAT BOTH ALTERNATIVE
COURSES ARE ALLOWED



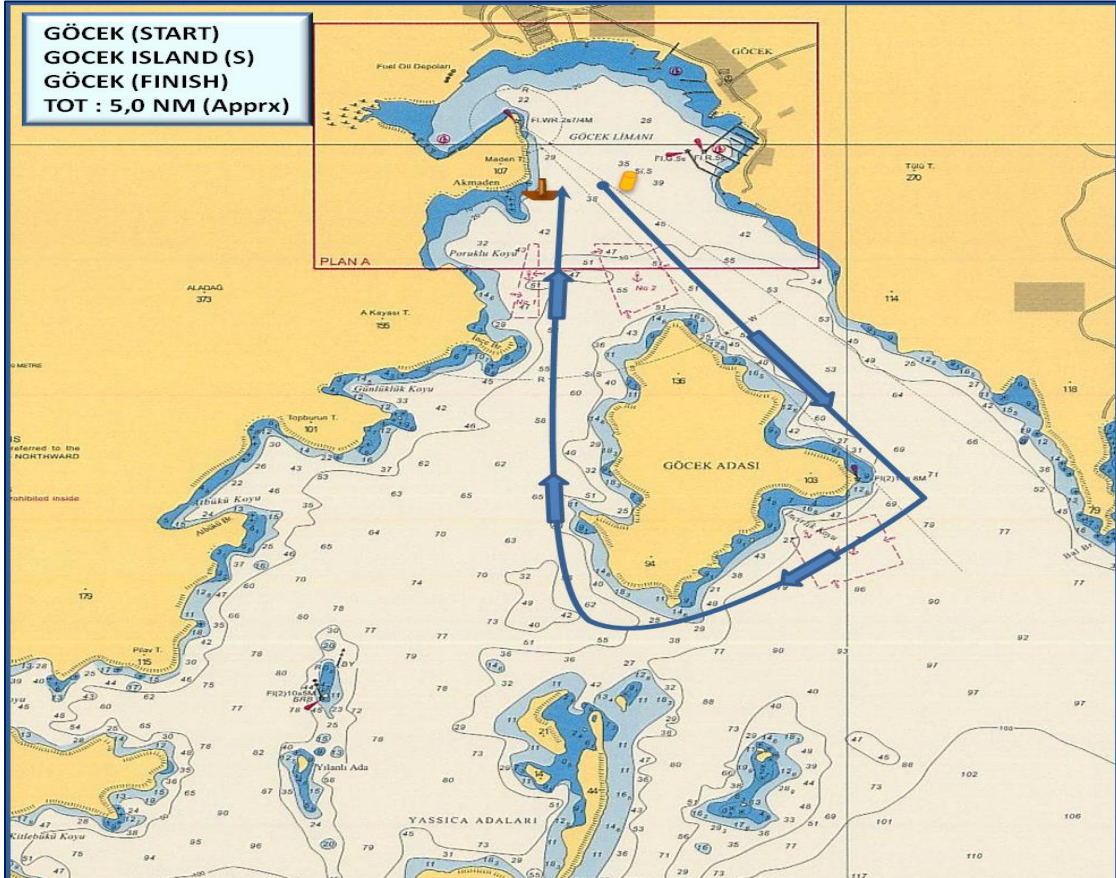
IRC CLASSES

START (GÖCEK)
GÖCEK ISLAND to starboard
YASSICA ISLAND to starboard
ZEYTİNLİ ISLAND to starboard
YASSICA ISLAND to starboard
GÖCEK ISLAND to starboard
FINISH (GÖCEK)
DISTANCE : ~ 7,5 NM

START (GÖCEK)
GÖCEK ADASI sancakta
YASSICA ADALARI sancakta
ZEYTİNLİ ADASI sancakta
YASSICA ADALARI sancakta
GÖCEK ADASI sancakta
FINISH (GÖCEK koyu içi)
MESAFE : ~ 7,5 DM

COURSE (ROTA) 2B – IRC CHARTER & CHARTER & FRESHMAN CLASSES

GÖCEK (START)
GOCEK ISLAND (S)
GÖCEK (FINISH)
TOT : 5,0 NM (Apprx)

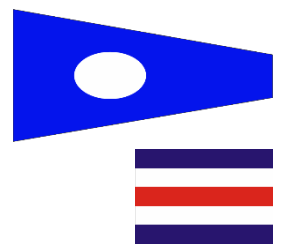


IRC CHRT. & CHARTER & FRESHMAN CLASSES

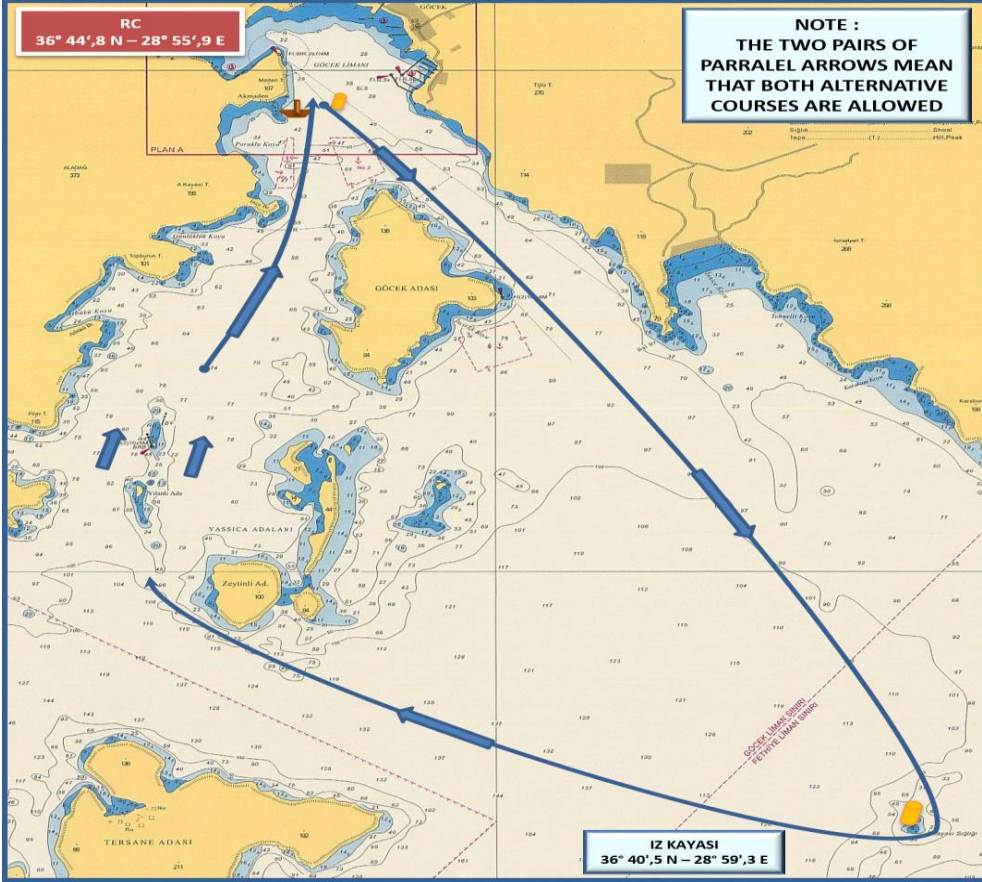
START (GOCEK)
GOCEK ISLAND to starboard
FINISH (GOCEK)
(~ 5,0 NM)

START (GÖCEK)
GÖCEK ADASI sancakta
FINISH (GÖCEK)
(~ 5,0 DM)

The place of RC boat and marks at the starting and finishing lines are approximate.
Start ve finish hatlarındaki şamandra ve komite botu yerleri yaklaşıkştir.



COURSE (ROTA) 2C - IRC CLASSES

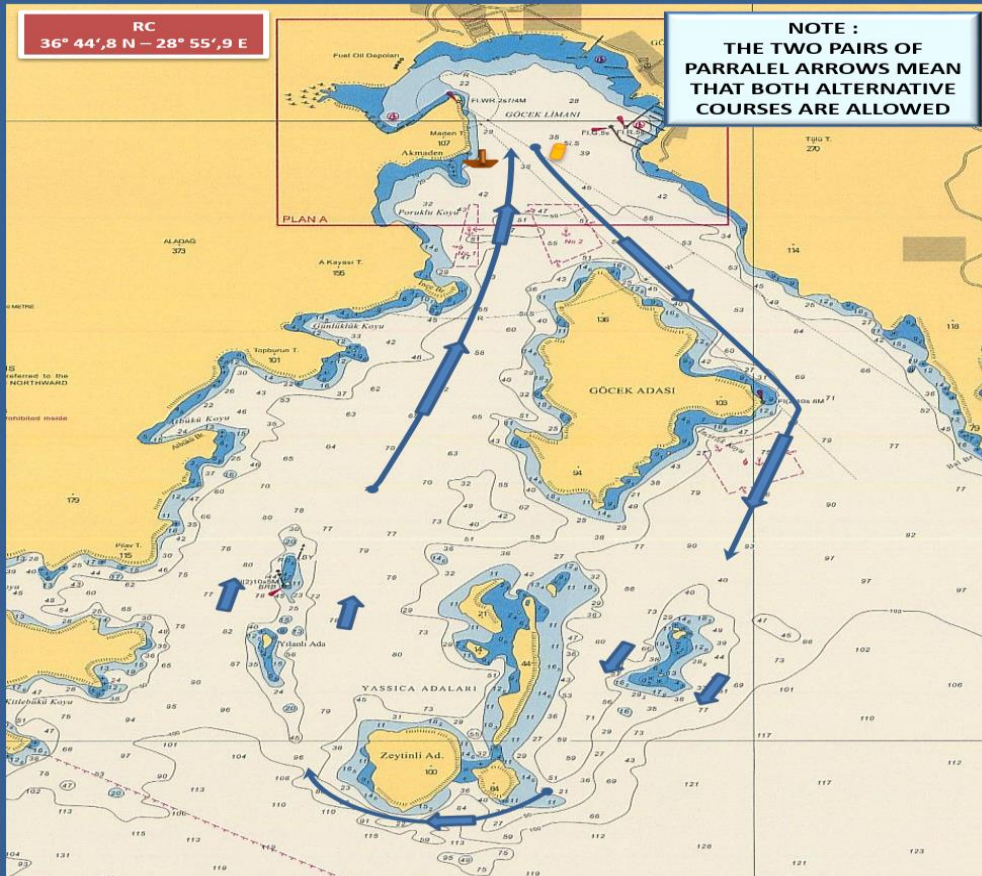


IRC CLASSES

START (GÖCEK)
GÖCEK ISLAND to starboard
İZ KAYASI to starboard
ZEYTİNLİ ISLAND to starboard
YASSICA ISLAND to starboard
GÖCEK ISLAND to starboard
FINISH (GÖCEK)
DISTANCE : ~ 11,5 NM

START (GÖCEK)
GÖCEK ADASI sancakta
İZ KAYASI sancakta
ZEYTİNLİ ADASI sancakta
YASSICA ADALARI sancakta
GÖCEK ADASI sancakta
FINISH (GÖCEK koyu içi)
MESAFE : ~ 11,5 DM

COURSE (ROTA) 2C - IRC CHARTER & CHARTER & FRESHMAN CLASSES

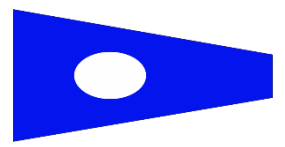


IRC CHRT. & CHARTER & FRESHMAN CLASSES

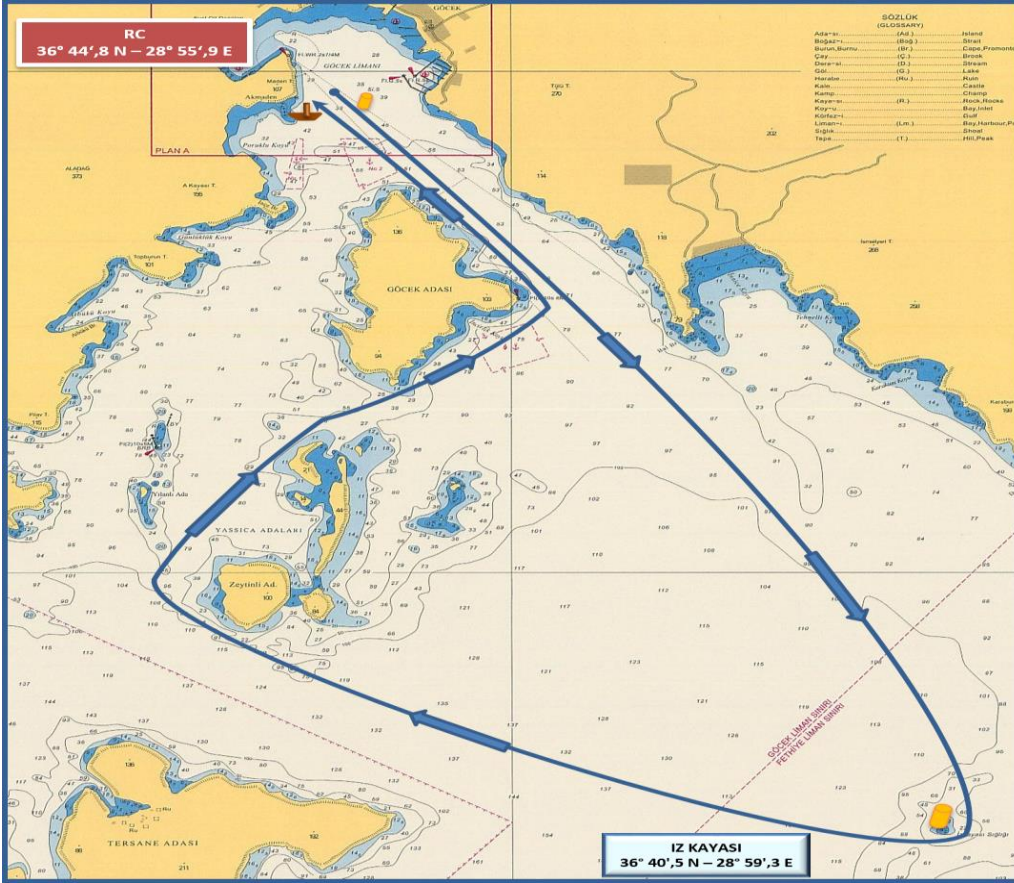
START (GOCEK)
GOCEK ISLAND to starboard
ZEYTİNLİ ISLAND to starboard
YASSICA ISLAND to starboard
GOCEK ISLAND to starboard
FINISH (GOCEK)
DISTANCE : (~ 7,5 NM)

START (GÖCEK)
GÖCEK ADASI sancakta
ZEYTİNLİ ADASI sancakta
YASSICA ADALARI sancakta
GÖCEK ADASI sancakta
FINISH (GÖCEK)
MESAFE : (~ 7,5 DM)

The place of RC boat and marks at the starting and finishing lines are approximate.
Start ve finish hatlarındaki şamandra ve komite botu yerleri yaklaşıkştir.



COURSE (ROTA) 2D - IRC CLASSES

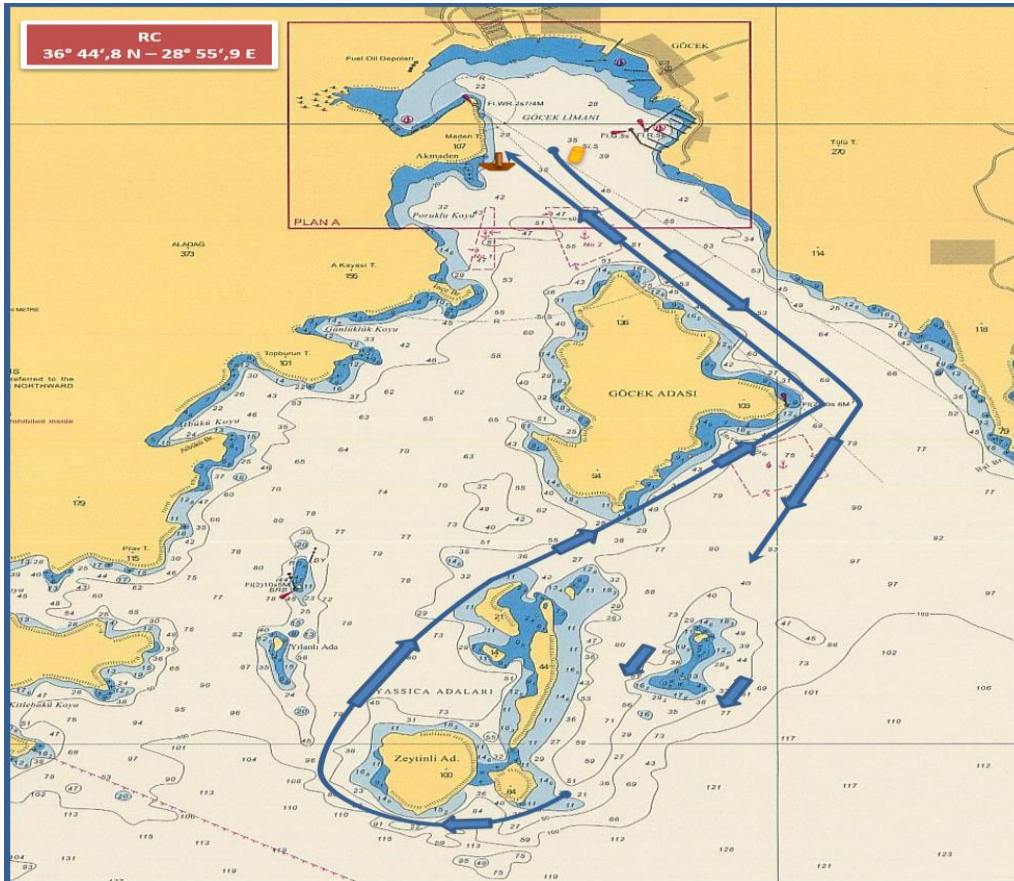


IRC CLASSES

START (GOCEK)
GÖCEK ISLAND to starboard
IZ KAYASI to starboard
ZEYTİNLİ ISLAND to starboard
YASSICA ISLAND to starboard
GÖCEK ISLAND to port
FINISH (GÖCEK)
DISTANCE : ~ 13,0 NM

START (GÖCEK)
GÖCEK ADASI sancakta
İZ KAYASI sancakta
ZEYTİNLİ ADASI sancakta
YASSICA ADALARI sancakta
GÖCEK ADASI iskelede
FINISH (GÖCEK koy içi)
MESAFE : ~ 13,0 DM

COURSE (ROTA 2D) – IRC CHARTER & CHARTER & FRESHMAN CLASSES

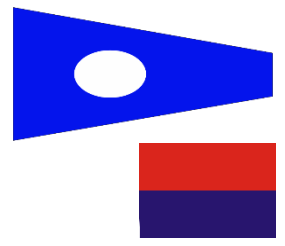


IRC CHRT. & CHARTER & FRESHMAN CLASSES

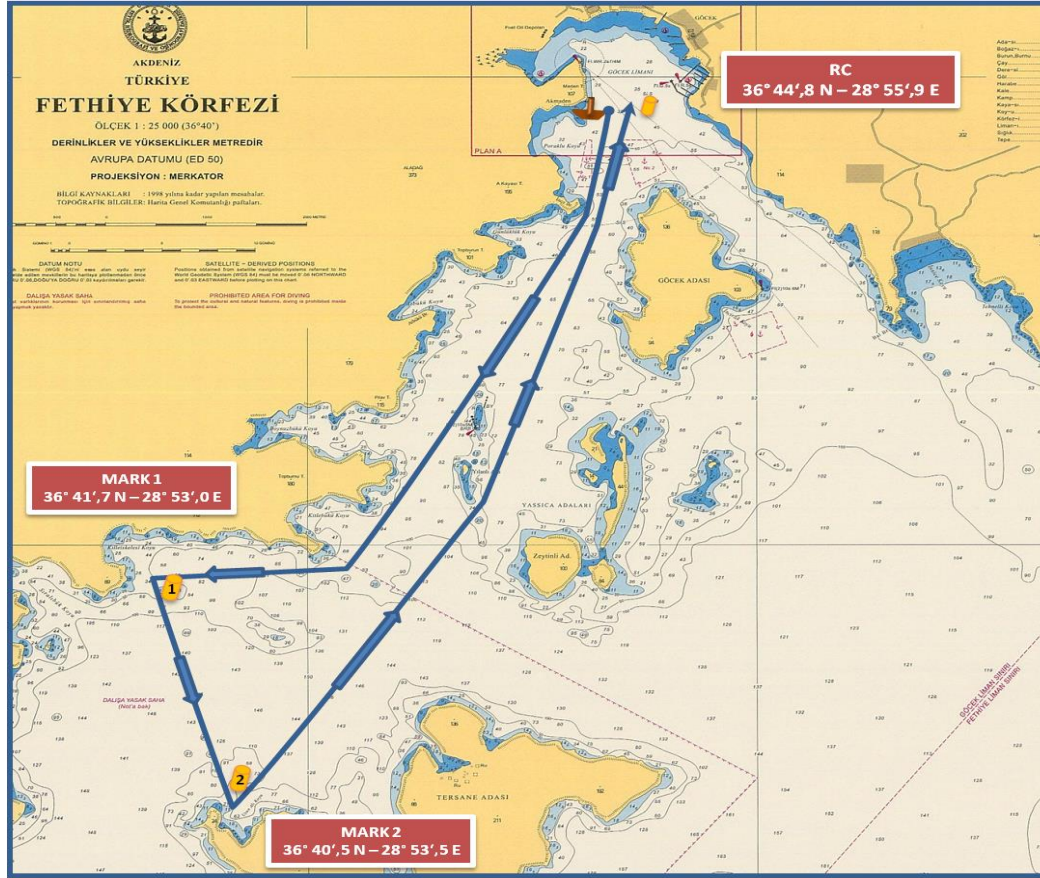
START (GOCEK)
GOCEK ISLAND to starboard
ZEYTİNLİ ISLAND to starboard
YASSICA ISLAND to starboard
GOCEK ISLAND to port
FINISH (GOCEK)
DISTANCE : (~ 8,0 NM)

START (GÖCEK)
GÖCEK ADASI sancakta
ZEYTİNLİ ADASI sancakta
YASSICA ADALARI sancakta
GÖCEK ADASI iskelede
FINISH (GÖCEK)
MESAFE : (~ 8,0 DM)

The place of RC boat and marks at the starting and finishing lines are approximate.
Start ve finish hatlarındaki şamandıra ve komite botu yerleri yaklaşıkştir.



COURSE (ROTA) 2E - IRC CLASSES



IRC CLASSES

START (GÖCEK)

GÖCEK ISLAND to port

SHALLOW BUOY to port

YILANLI ISLAND to port

MARK 1 to port - MARK 2 to port

YILANLI ISLAND to port

SHALLOW BUOY to port

GÖCEK ISLAND to starboard

FINISH (GÖCEK) DISTANCE: ~10,5 NM

START (GÖCEK)

GÖCEK ADASI iskelede

SIĞLIK FENERİ iskelede

YILANLI ADA iskelede

ŞAMD.1 iskelede – ŞAMD.2 iskelede

YILANLI ADA iskelede

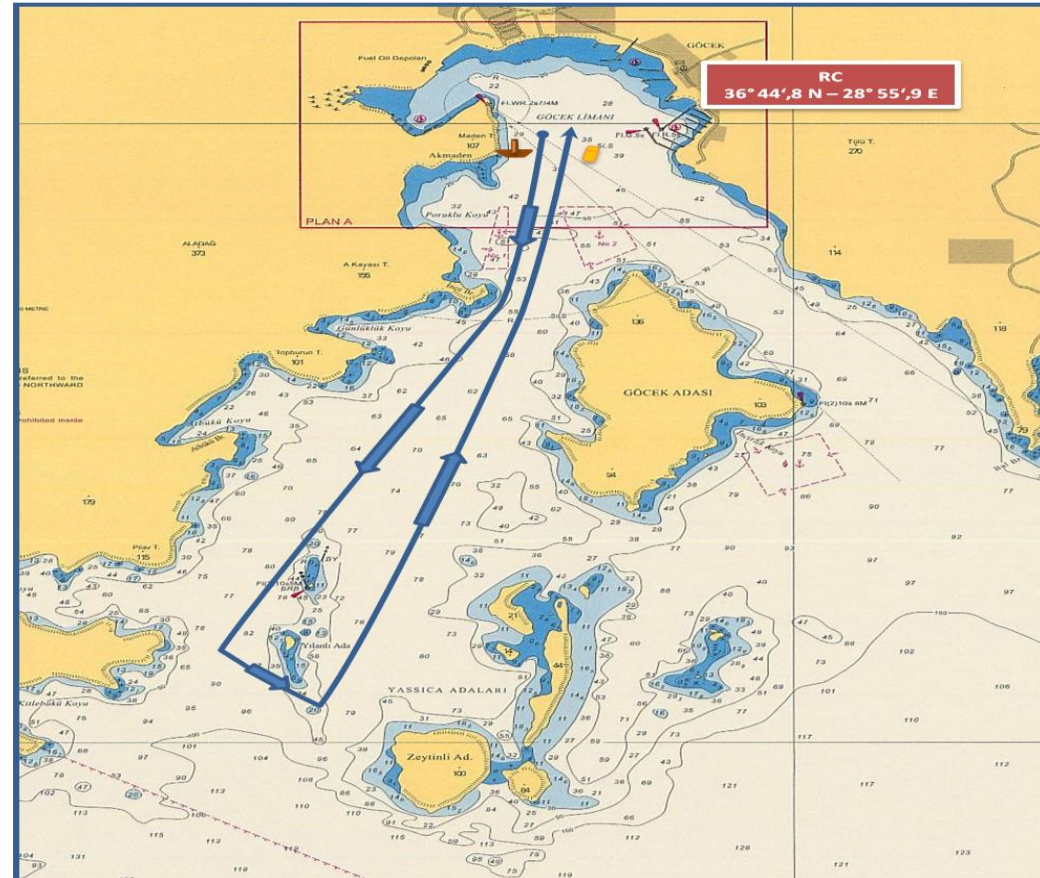
SIĞLIK FENERİ iskelede

GÖCEK ADASI sancakta

FINISH (GÖCEK koy içi)

MESAFE : ~ 10,5 DM

COURSE (ROTA) 2E – IRC CHARTER & CHARTER & FRESHMAN CLASSES



IRC CHRT. & CHARTER & FRESHMAN CLASSES

START (GÖCEK)

GÖCEK ISLAND to port

SHALLOW BUOY to port

YILANLI ISLAND to port

GÖCEK ISLAND to starboard

FINISH (GÖCEK)

DISTANCE : ~ 6,0 NM

START (GÖCEK)

GÖCEK ADASI iskelede

SIĞLIK FENERİ iskelede

YILANLI ADA iskelede

GÖCEK ADASI sancakta

FINISH (GÖCEK)

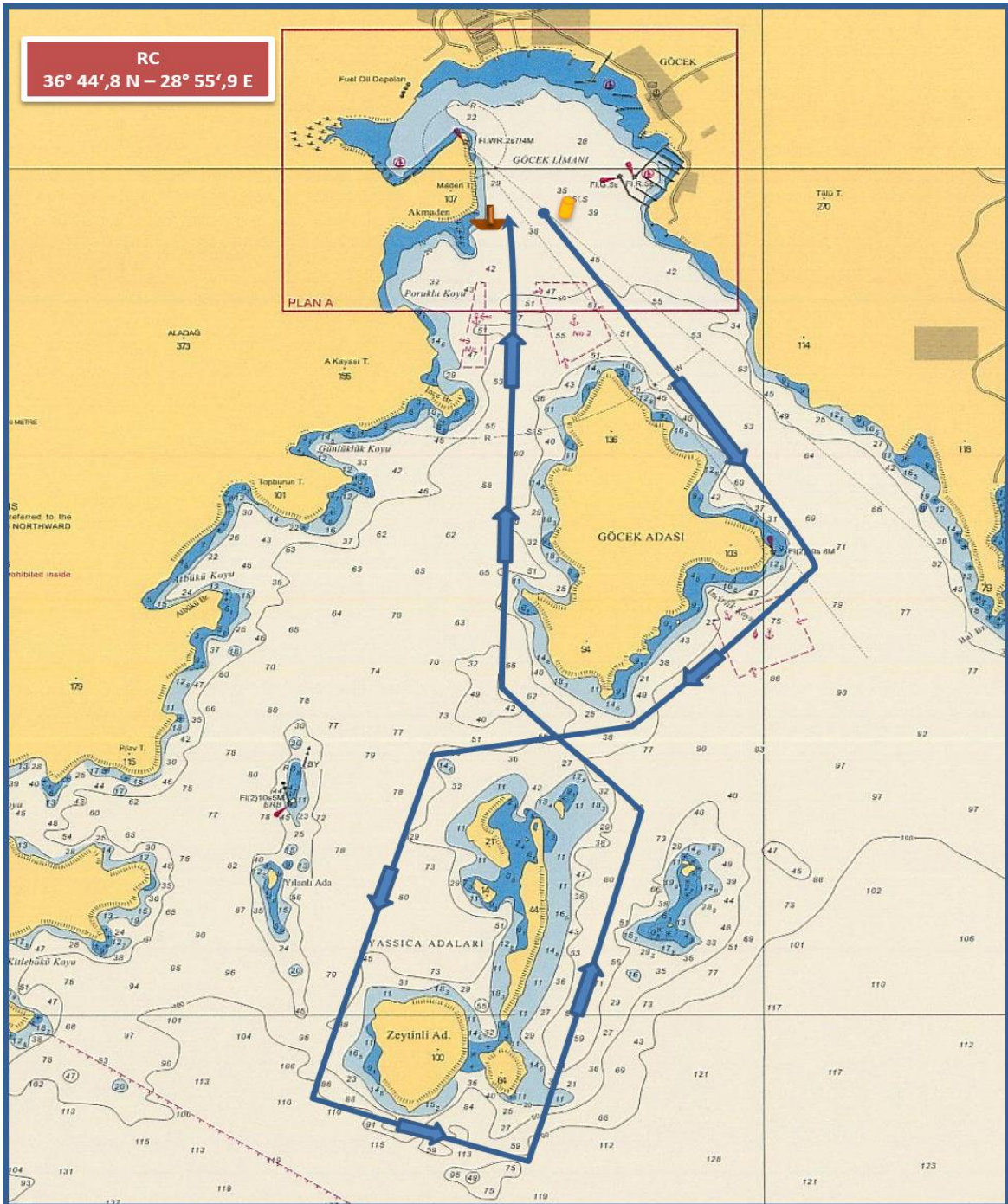
MESAFE : ~ 6,0 DM

The place of RC boat and marks at the starting and finishing lines are approximate.
Start ve finish hatlarındaki şamandıra ve komite botu yerleri yaklaşıkştir.

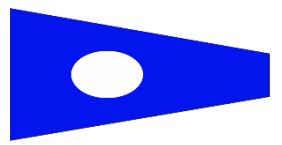
COURSE (ROTA) 2F - IRC & IRC CHARTER & CHARTER & FRESHMAN CLASSES

ALL CLASSES

- START (GÖCEK) pass GÖCEK ISLAND to starboard, pass YASSICA ISLAND to port, pass ZEYTİNLİ ISLAND to port, pass YASSICA ISLAND to port, pass GÖCEK ISLAND to starboard, FINISH (GÖCEK) DISTANCE :~ 9,0 NM
- START (GÖCEK), GÖCEK ADASI sancakta geçiş, YASSICA ADALARI iskelede geçiş, ZEYTİNLİ ADA iskelede geçiş, YASSICA ADA iskelede geçiş, GÖCEK ADASI sancakta geçiş, FINISH (GÖCEK koyu içi) MESAFE : ~ 9,0 DM



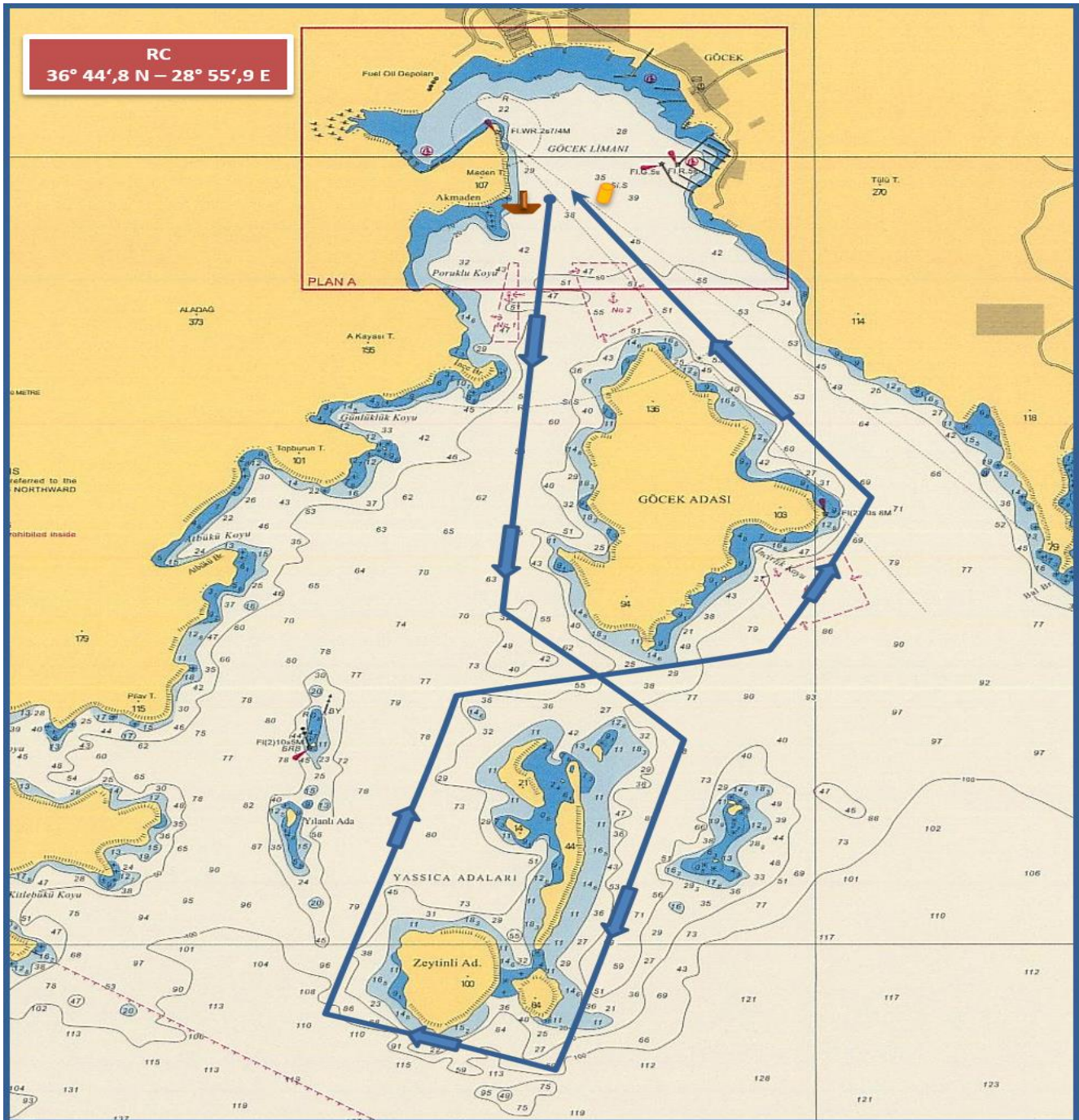
The place of RC boat and marks at the starting and finishing lines are approximate.
Start ve finish hatlarındaki şamandıra ve komite botu yerleri yaklaşıkştir.



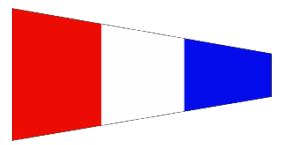
COURSE (ROTA) 2G - IRC & IRC CHARTER & CHARTER & FRESHMAN CLASSES

ALL CLASSES

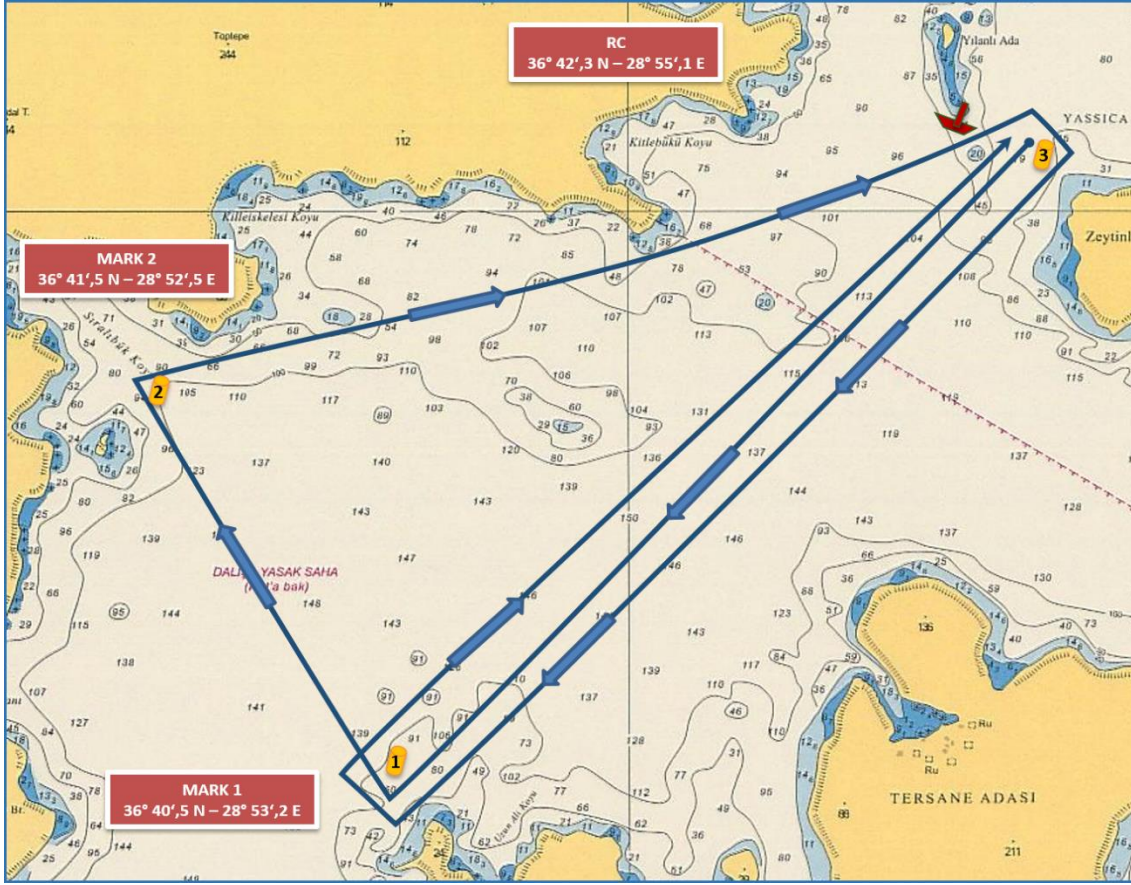
- START (GÖCEK) pass GÖCEK ISLAND to port, pass YASSICA ISLAND to starboard, pass ZEYTİNLİ ISLAND to starboard, pass YASSICA ISLAND to starboard, pass GÖCEK ISLAND to port, FINISH (GÖCEK)
DISTANCE :~ 9,0 NM
- START (GÖCEK), GÖCEK ADASI iskelede geçiş, YASSICA ADALARI sancakta geçiş, ZEYTİNLİ ADA sancakta geçiş, YASSICA ADA sancakta geçiş, GÖCEK ADASI iskelede geçiş, FINISH (GÖCEK koy içi) MESAFE : ~ 9,0 DM



The place of RC boat and marks at the starting and finishing lines are approximate.
Start ve finish hatlarındaki şamandıra ve komite botu yerleri yaklaşıkştir.



COURSE (ROTA) 3A - IRC CLASSES

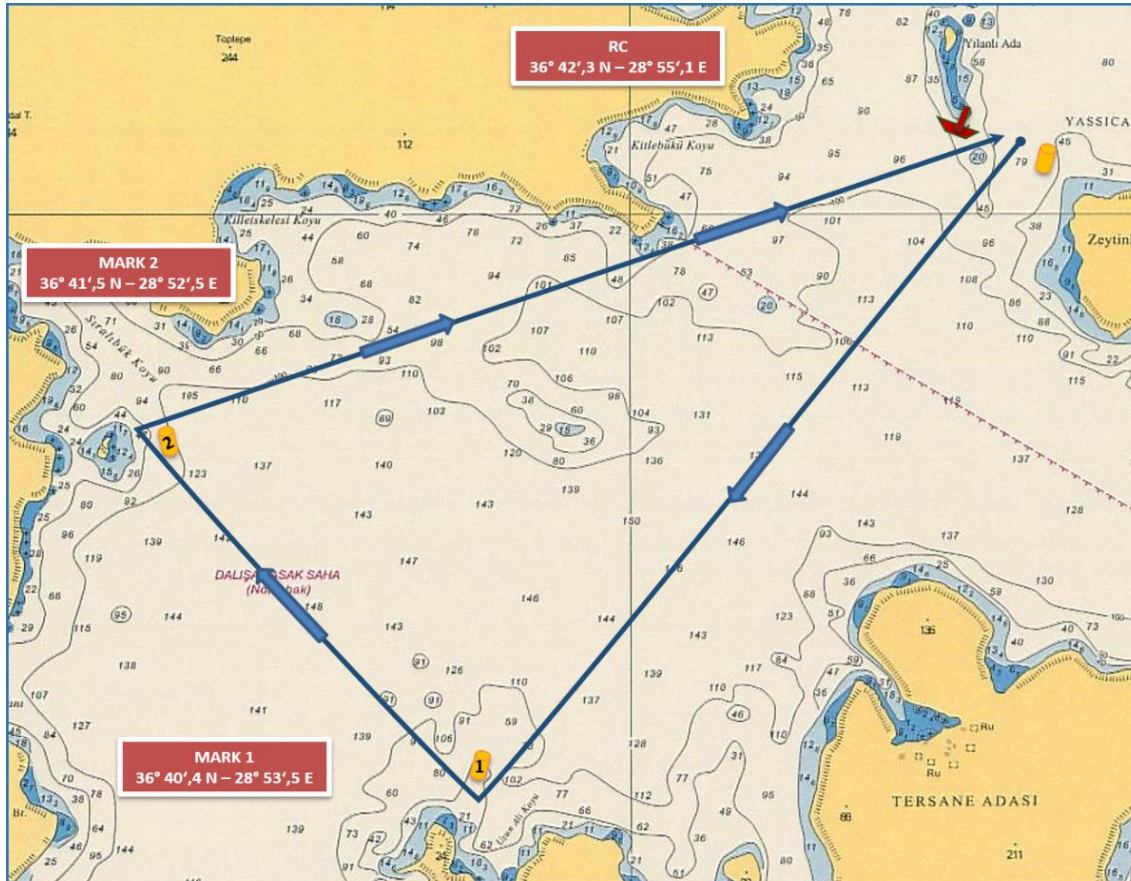


IRC CLASSES

START (YILANLI ISLAND)
(36°42',3 N - 28°55',1 E)
MARK 1 to starboard
MARK 2 to starboard
MARK 3 to starboard
MARK 1 to starboard
FINISH (YILANLI ISLAND)
(~ 10,5 NM)

START (YILANLI ADA)
(36°42',3 N - 28°55',1 E)
ŞAMANDIRA 1 sancakta
ŞAMANDIRA 2 sancakta
ŞAMANDIRA 3 sancakta
ŞAMANDIRA 1 iskelede
FINISH (YILANLI ADA)
(~ 10,5 DM)

COURSE (ROTA) 3A - IRC CHARTER & CHARTER & FRESHMAN CLASSES

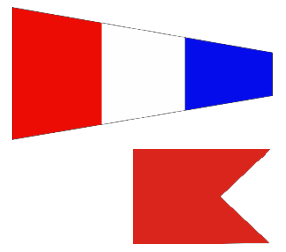


IRC CHRT. & CHARTER & FRESHMAN CLASSES

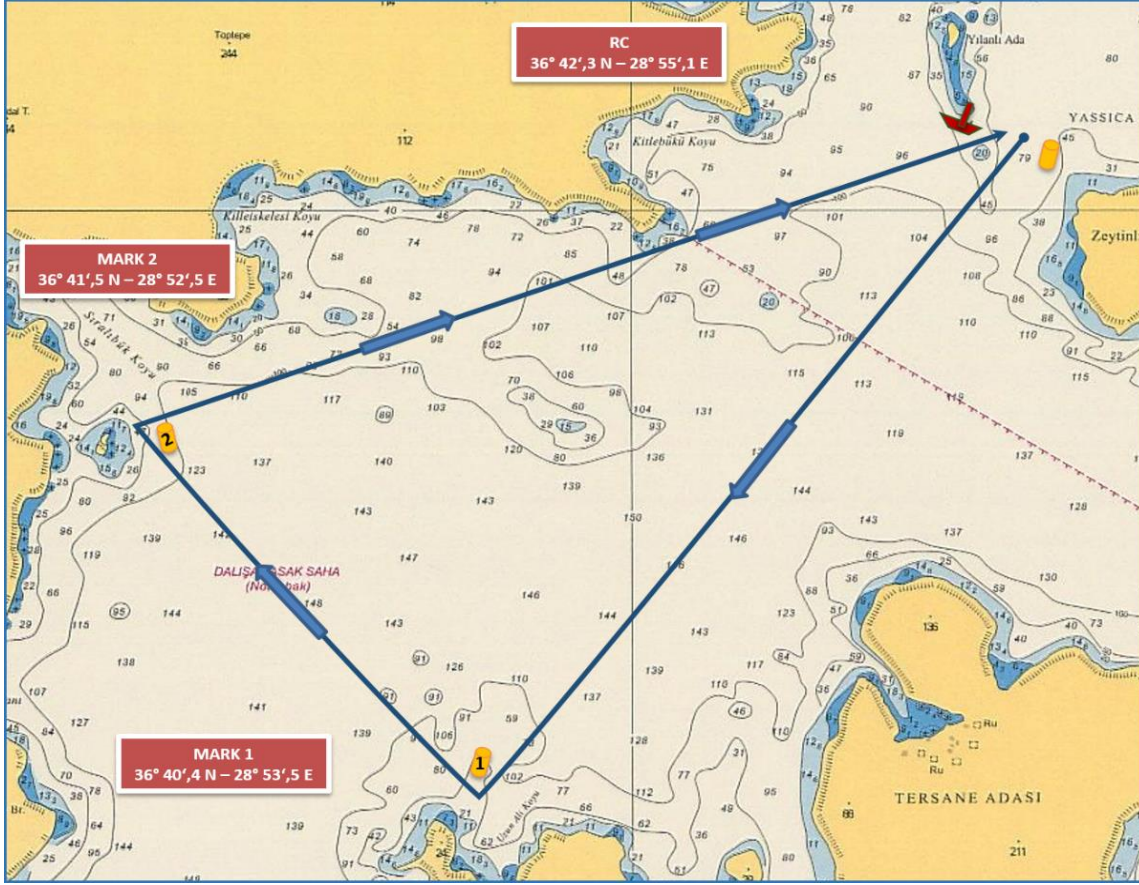
START (YILANLI ISLAND)
(36°42',3 N - 28°55',1 E)
MARK 1 TO STARBOARD
MARK 2 STARBOARD
FINISH (YILANLI ISLAND)
(~ 6,0 NM)

START (YILANLI ADA)
(36°42',3 N - 28°55',1 E)
ŞAMANDIRA 1 SANCAKTA
ŞAMANDIRA 2 SANCAKTA
FINISH (YILANLI ADA)
(~ 6,0 DM)

The place of RC boat and marks at the starting and finishing lines are approximate.
Start ve finish hatlarındaki şamandra ve komite botu yerleri yaklaşıkştir.



COURSE (ROTA) 3B - IRC CLASSES

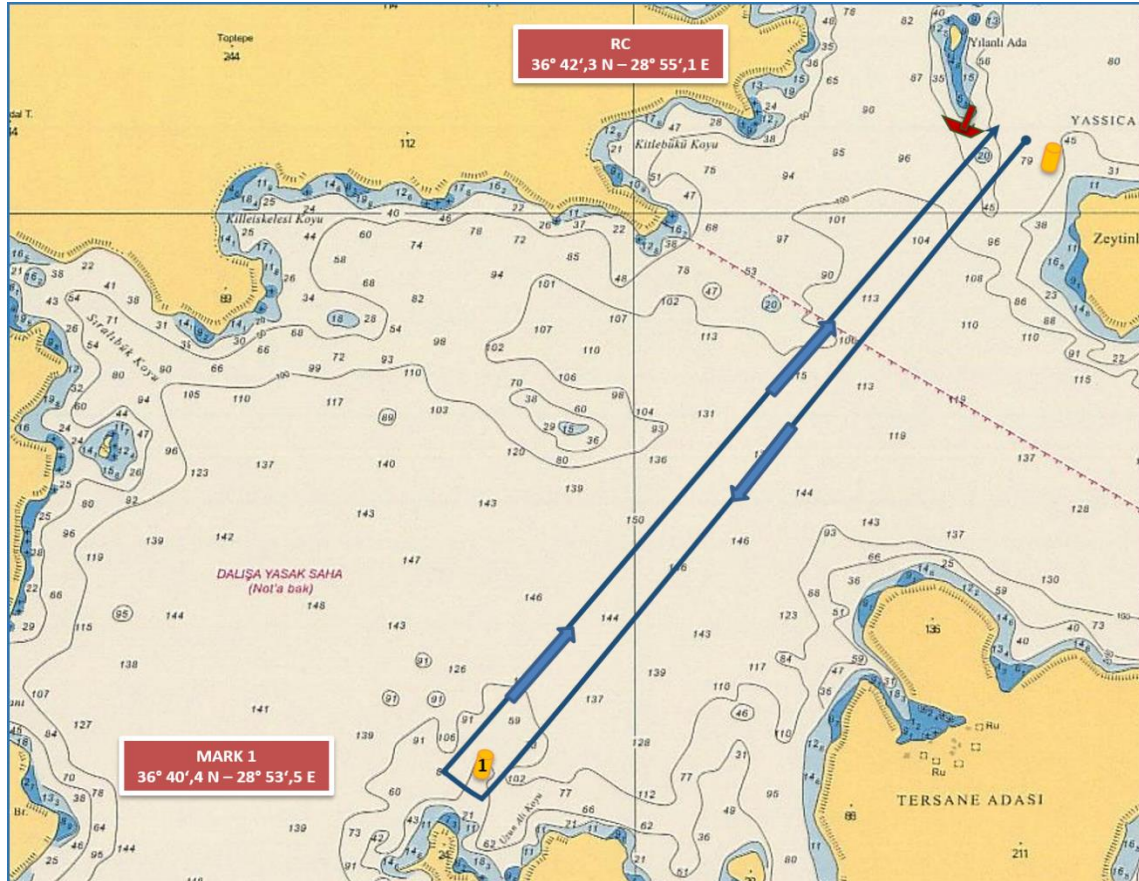


IRC CLASSES

START (YILANLI ISLAND)
(36°42',3 N - 28°55',1 E)
MARK 1 TO STARBOARD
MARK 2 STARBOARD
FINISH (YILANLI ISLAND)
(~ 6,0 NM)

START (YILANLI ADA)
(36°42',3 N - 28°55',1 E)
ŞAMANDRA 1 SANCAKTA
ŞAMANDIRA 2 SANCAKTA
FINISH (YILANLI ADA)
(~ 6,0 DM)

COURSE (ROTA 3B) – IRC CHARTER & CHARTER & FRESHMAN CLASSES



IRC CHRT. & CHARTER & FRESHMAN CLASSES

START (YILANLI ISLAND)
(36°42',3 N - 28°55',1 E)
MARK 1 TO STARBOARD
FINISH (YILANLI ISLAND)
(~ 4,0 NM)

START (YILANLI ADA)
(36°42',3 N - 28°55',1 E)
ŞAMANDRA 1 SANCAKTA
FINISH (YILANLI ADA)
(~ 4,0 DM)

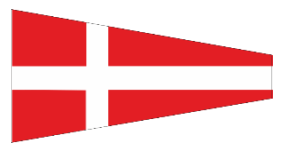
The place of RC boat and marks at the starting and finishing lines are approximate.
Start ve finish hatlarındaki şamandra ve komite botu yerleri yaklaşıkştir.



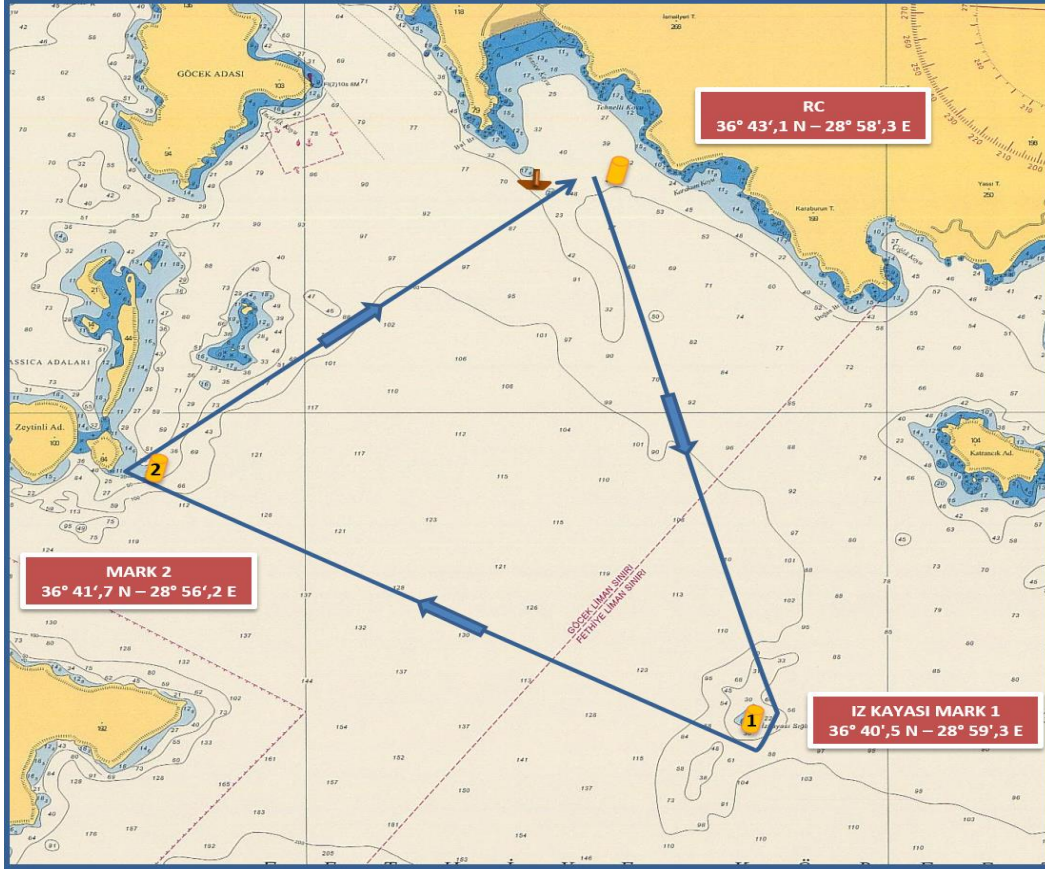
GÖCEK YACHT CLUB

COURSE 4A - ROTA 4A

Coastal courses / Coğrafik rotalar



COURSE (ROTA) 4A - IRC CLASSES



IRC CLASSES

START (İNLİCE)

(36°43',1 N - 28°58',3 E)

İZKAYASI MARK 1 to starboard

MARK 2 to starboard

FINISH (İNLİCE)

(~ 8,0 NM)

START (İNLİCE)

(36°43',1 N - 28°58',3 E)

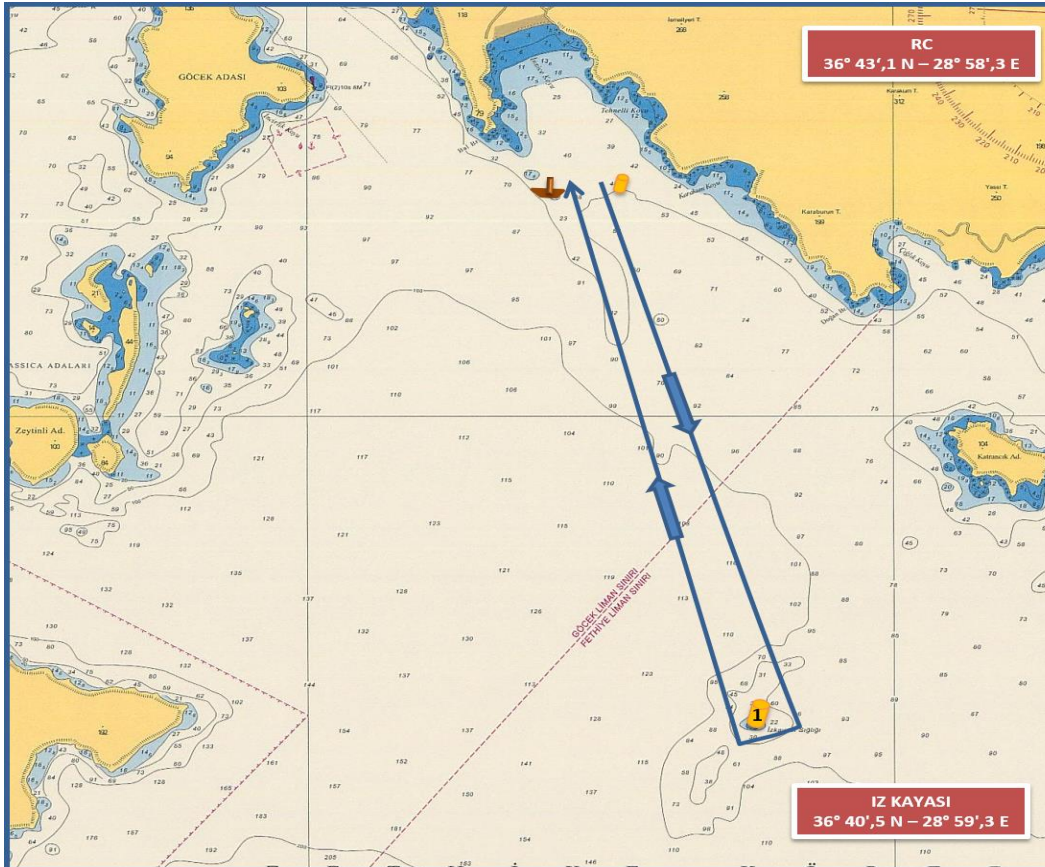
İZKAYASI ŞAMAND. 1 sancakta

ŞAMANDIRA 2 sancakta

FINISH (İNLİCE)

(~ 8,0 DM)

COURSE (ROTA) 4A - IRC CHARTER & CHARTER & FRESHMAN CLASSES



IRC CHRT. & CHARTER & FRESHMAN CLASSES

START (İNLİCE)

(36°43',1 N - 28°58',3 E)

İZKAYASI MARK 1 to starboard

MARK 2 to starboard

FINISH (İNLİCE)

(~ 6,0 NM)

START (İNLİCE)

(36°43',1 N - 28°58',3 E)

İZKAYASI ŞAMAND. 1 sancakta

ŞAMANDIRA 2 sancakta

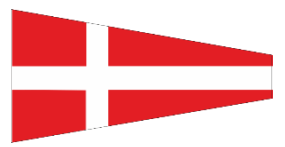
FINISH (İNLİCE)

(~ 6,0 DM)

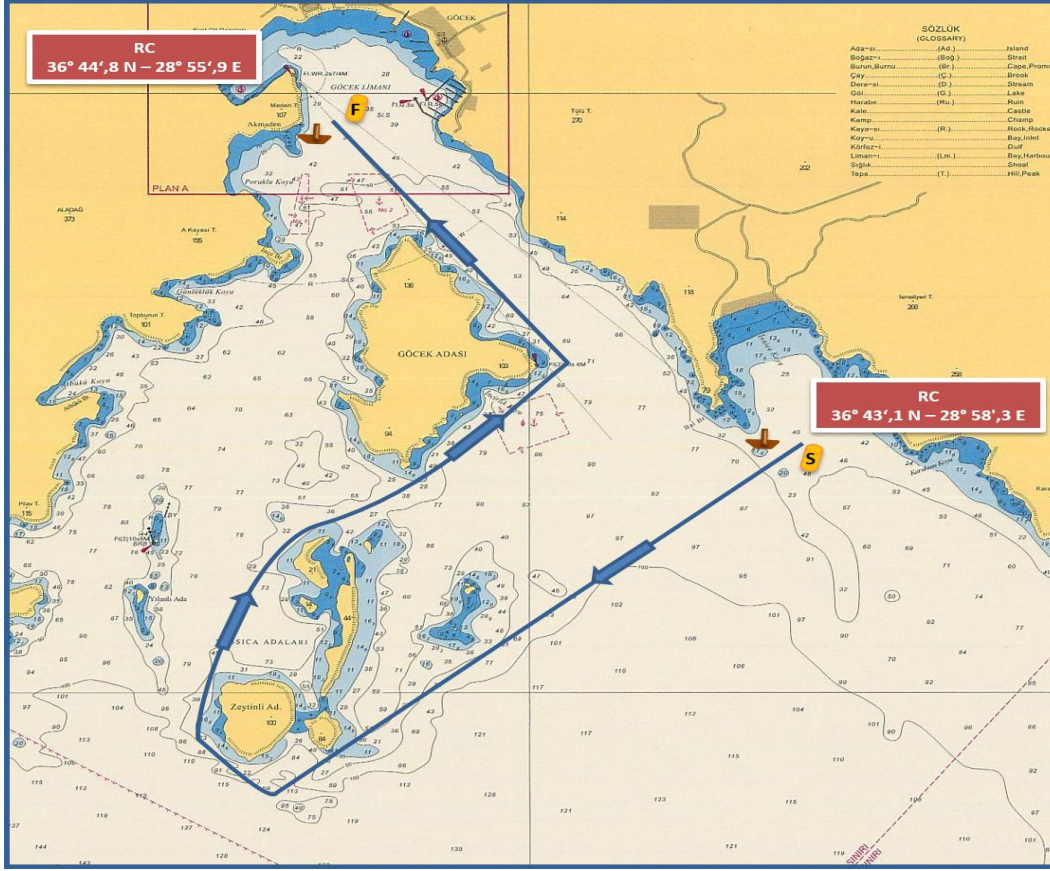
The place of RC boat and marks at the starting and finishing lines are approximate.

Start ve finish hatlarındaki şamandıra ve komite botu yerleri yaklaşıkştir.





COURSE (ROTA) 4C - IRC CLASSES



IRC CLASSES

START (İNLİCE)

(36°43',1 N - 28°58',3 E)

TOPAN ISLAND to starboard

ZEYTİNLİ ISLAND to starboard

YASSICA ISLAND to starboard

GÖCEK ISLAND to port

FINISH (GÖCEK)

(~ 7,5 NM)

START (İNLİCE)

(36°43',1 N - 28°58',3 E)

TOPAN ADALAR sancakta

ZEYTİNLİ ADA sancakya

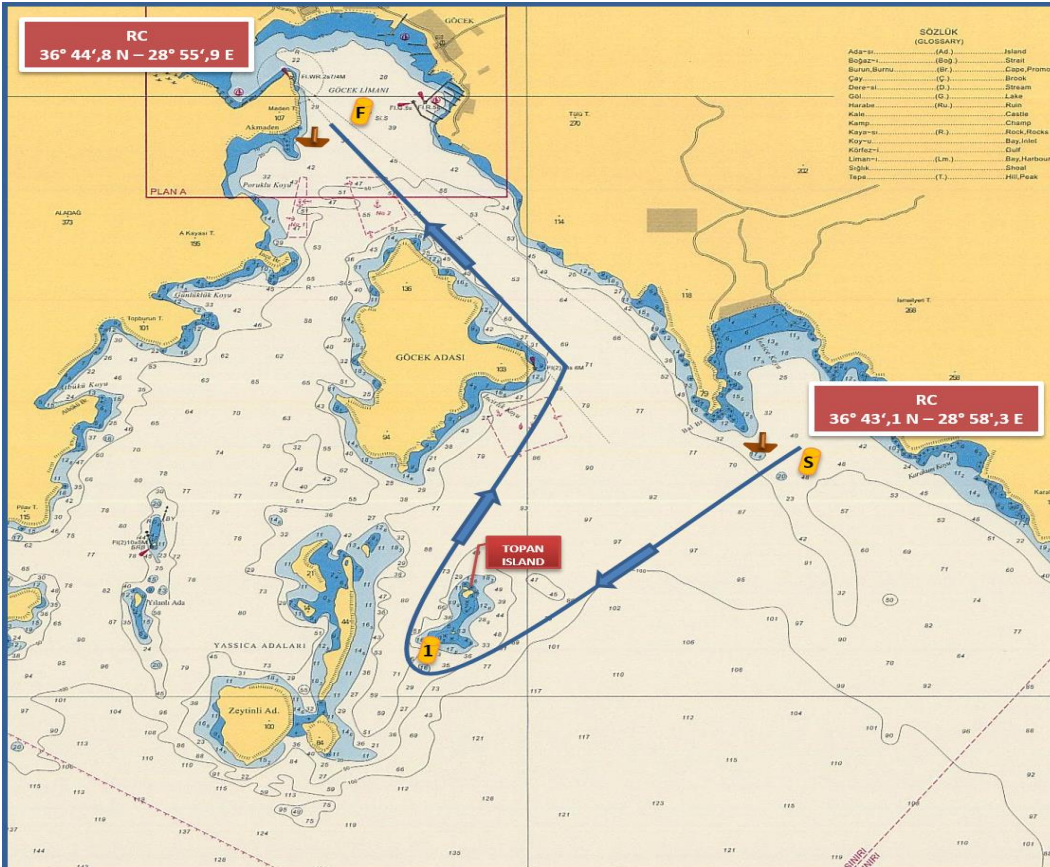
YASSICA ADALARI sancakta

GÖCEK ADASI iskelede

FINISH (GÖCEK)

(~7,5 DM)

COURSE (ROTA) 4C - IRC CHARTER & CHARTER & FRESHMAN CLASSES



IRC CHRT. & CHARTER & FRESHMAN CLASSES

START (İNLİCE)

(36°43',1 N - 28°58',3 E)

TOPAN ISLAND to starboard

MARK 1 to starboard

GÖCEK ISLAND to port

FINISH (GÖCEK)

(~ 5,0 NM)

START (İNLİCE)

(36°43',1 N - 28°58',3 E)

TOPAN ADASI sancakta

ŞAMANDIRA 1 sancakta

GÖCEK ADASI iskelede

FINISH (GÖCEK)

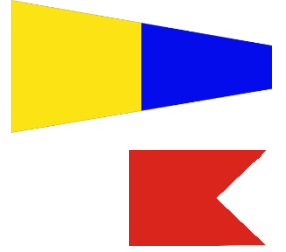
(~ 5,0 DM)

The place of RC boat and marks at the starting and finishing lines are approximate.

Start ve finish hatlarındaki şamandıra ve komite botu yerleri yaklaşıkştir.



GÖCEK YACHT CLUB
COURSE 5B - ROTA 5B
LW courses / ORSA-PUPA rotalar



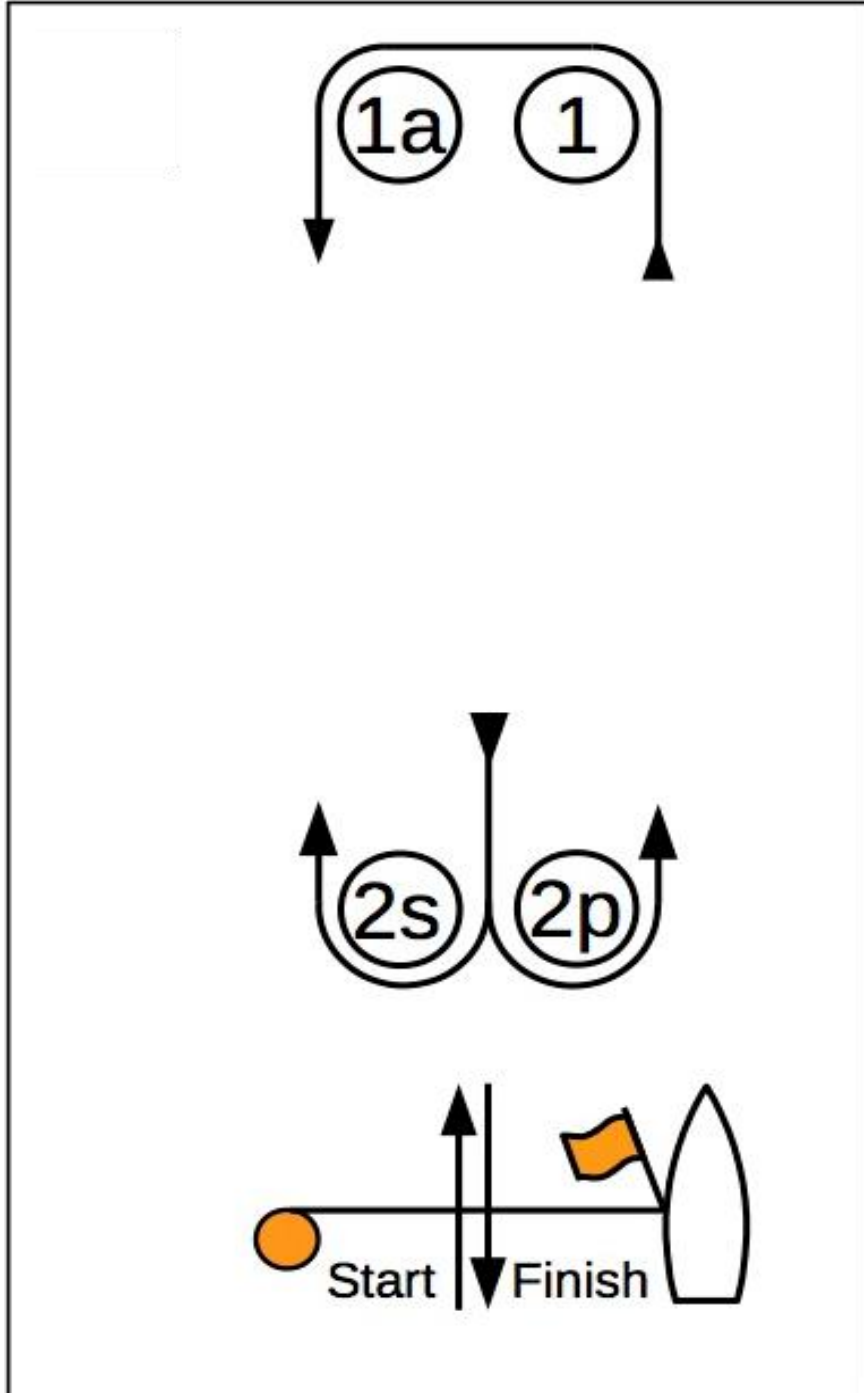
COURSE (ROTA) 5B - IRC & IRC CHARTER & CHARTER & FRESHMAN CLASSES

ALL CLASSES / TÜM SINIFLAR

MARK ROUNDING ORDER / ŞAMANDIRA DÖNÜŞLERİ

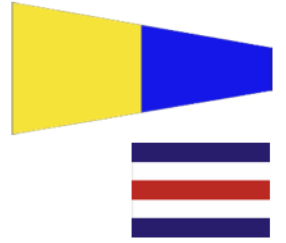
START – 1 – 1A - 2S/2P – 1 – 1A -FINISH

Distance 5 NM / Mesafe 5 DM



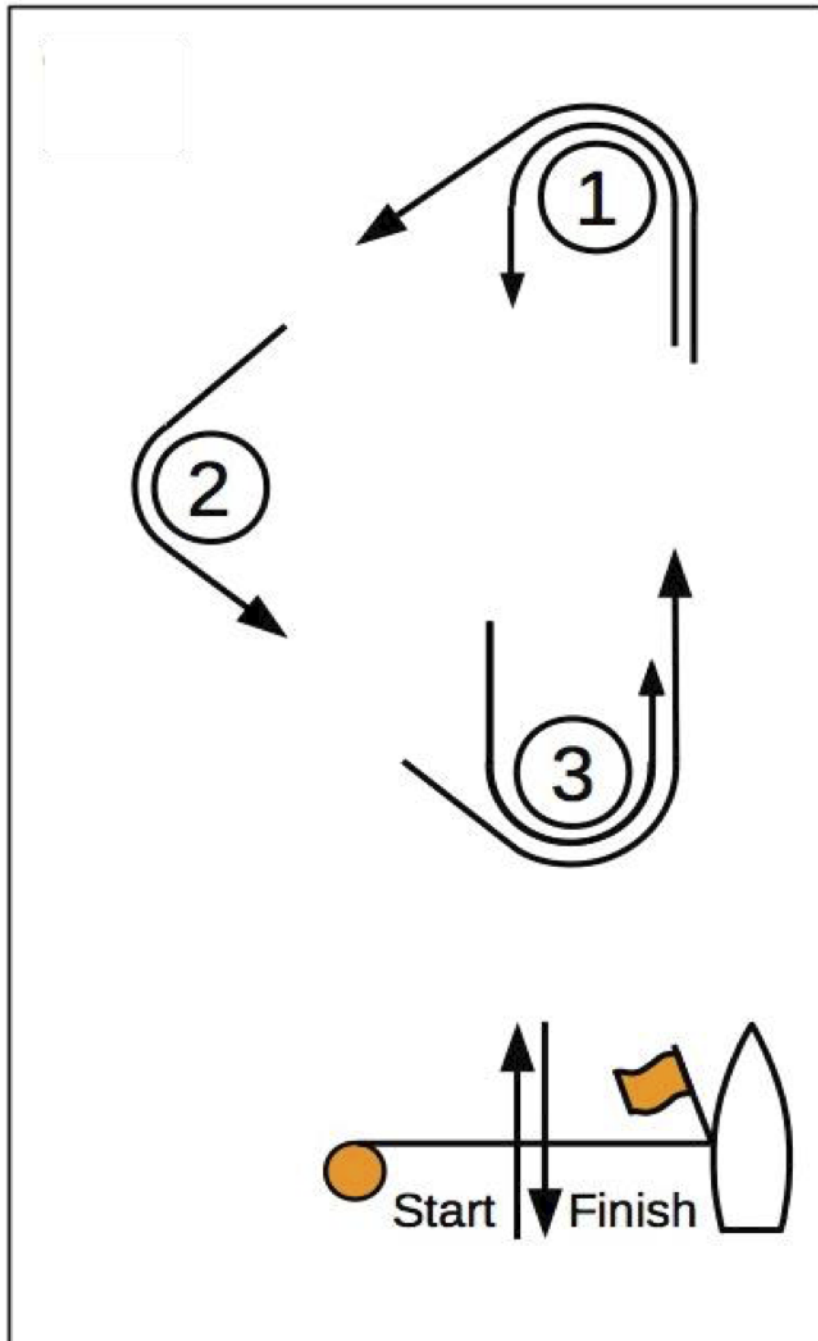


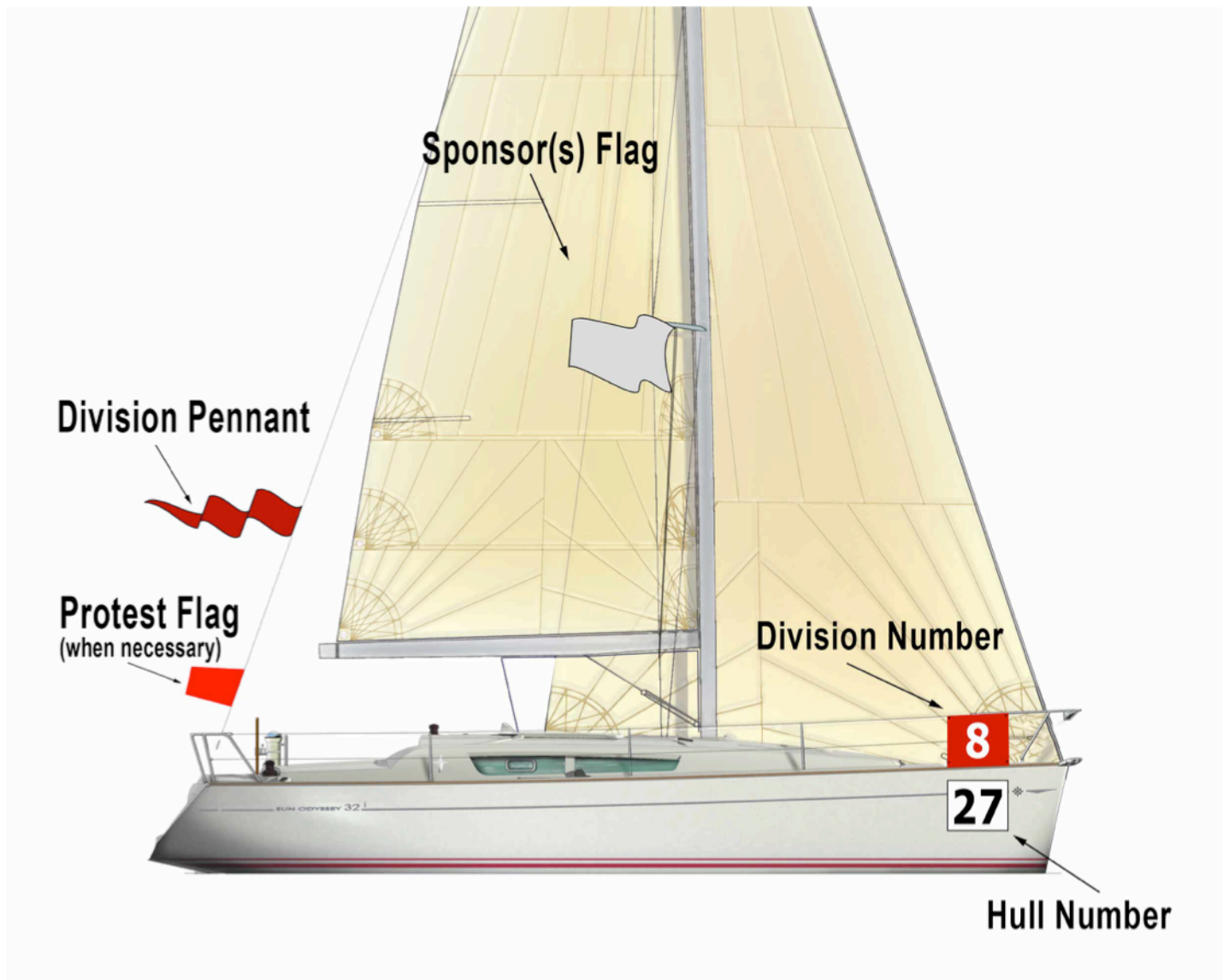
GÖCEK YACHT CLUB
COURSE 5C - ROTA 5C
LW courses / ORSA-PUPA rotalar



COURSE (ROTA) 5C - IRC & IRC CHARTER & CHARTER & FRESHMAN CLASSES

ALL CLASSES / TÜM SINIFLAR
MARK ROUNDING ORDER / ŞAMANDIRA DÖNÜŞLERİ
START – 1 – 2 – 3 – 1 – FINISH
Distance 6 NM / Mesafe 6 DM



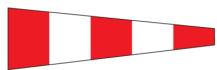




RACE SIGNALS

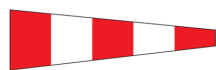
The meanings of visual and sound signals are stated below. An arrow pointing up or down ($\uparrow \downarrow$) means that a visual signal is displayed or removed. A dot (\bullet) means a sound; five short dashes (-----) mean repetitive sounds; a long dash (—) means a long sound. When a visual signal is displayed over a class flag, the signal applies only to that class.

Postponement Signals



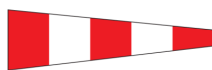
$\uparrow \bullet \bullet \bullet \downarrow \bullet$

AP Races not started are *postponed*. The warning signal will be made 1 minute after removal unless at that time the race is *postponed* again or *abandoned*.



$\uparrow \bullet \bullet$

AP over H Races not started are *postponed*. Further signals ashore.



$\uparrow \bullet \bullet$

AP over A Races not started are *postponed*. No more racing today.

AP over a numeral pennant 1-9

Postponement of 1-9 hours from the scheduled starting time.



Pennant 1 $\uparrow \bullet \bullet \downarrow \bullet$



Pennant 2 $\uparrow \bullet \bullet \downarrow \bullet \bullet$



Pennant 3 $\uparrow \bullet \bullet \downarrow \bullet$



Pennant 4 $\uparrow \bullet \bullet \downarrow \bullet \bullet$



Pennant 5 $\uparrow \bullet \bullet \downarrow \bullet \bullet$



Pennant 6 $\uparrow \bullet \bullet \downarrow \bullet \bullet$



Pennant 7 $\uparrow \bullet \bullet \downarrow \bullet \bullet$



Pennant 8 $\uparrow \bullet \bullet \downarrow \bullet \bullet$



Pennant 9 $\uparrow \bullet \bullet \downarrow \bullet \bullet$

Abandonment Signals



$\uparrow \bullet \bullet \bullet \downarrow \bullet$

N All races that have started are *abandoned*. Return to the starting area. The warning signal will be made 1 minute after removal unless at that time the race is *abandoned* again or *postponed*.



$\uparrow \bullet \bullet \bullet$

N over H All races are *abandoned*. Further signals ashore.



$\uparrow \bullet \bullet \bullet$

N over A All races are *abandoned*. No more racing today.

Preparatory Signals



$\uparrow \bullet \downarrow \text{—}$

P Preparatory signal.



$\uparrow \bullet \downarrow \text{—}$

I Rule 30.1 is in effect.



$\uparrow \bullet \downarrow \text{—}$

Z Rule 30.2 is in effect.



$\uparrow \bullet \downarrow \text{—}$

U Rule 30.3 is in effect.



$\uparrow \bullet \downarrow \text{—}$

Black flag. Rule 30.4 is in effect.

Recall Signals



$\uparrow \bullet$

X Individual recall.



$\uparrow \bullet \bullet \downarrow \bullet$

First Substitute General recall. The warning signal will be made 1 minute after removal.

Shortened Course



$\uparrow \bullet \bullet$

S The course has been shortened. Rule 32.2 is in effect.

Changing the Next Leg



C The position of the next *mark* has been changed:



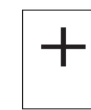
to starboard;



to port;



to decrease the length of the leg;



to increase the length of the leg.

Other Signals



$\uparrow \bullet$

L Ashore: A notice to competitors has been posted. Afloat: Come within hail or follow this vessel.



M The object displaying this signal replaces a missing *mark*.



$\uparrow \bullet$

Y Wear a personal flotation device (see rule 40).



(no sound)

Blue flag or shape. This race committee vessel is in position at the finishing line.

GYC RW 2020 COURSES

DISTANCE & RACE TIME LIMITS

CODE	CLASS	DISTANCE (NM)	TIME LIMIT (MIN)
1A	IRC	17,00	300
	IRCCHR/FRESHMEN	17,00	300
1B	IRC	17,00	300
	IRCCHR/FRESHMEN	17,00	300
2A	IRC	7,50	150
	IRCCHR/FRESHMEN	5,00	150
2B	IRC	7,50	150
	IRCCHR/FRESHMEN	5,00	150
2C	IRC	13,00	300
	IRCCHR/FRESHMEN	13,00	300
2D	IRC	13,00	300
	IRCCHR/FRESHMEN	13,00	300
2E	IRC	10,00	240
	IRCCHR/FRESHMEN	6,00	240
2F	IRC	10,00	240
	IRCCHR/FRESHMEN	10,00	240
2G	IRC	10,00	240
	IRCCHR/FRESHMEN	10,00	240
3A	IRC	10,00	240
	IRCCHR/FRESHMEN	6,00	240
3B	IRC	6,00	180
	IRCCHR/FRESHMEN	4,00	120
4A	IRC	10,00	240
	IRCCHR/FRESHMEN	6,00	240
4C	IRC	5,00	180
	IRCCHR/FRESHMEN	3,00	180
5B	IRC	5,00	120
	IRCCHR/FRESHMEN	5,00	120
5C	IRC	5,00	120
	IRCCHR/FRESHMEN	5,00	120