



PORTOSOLE



THE CARNIVAL RACE / 1st NATIONAL 470 REGATTA

Sanremo 18/21 February 2021



SAILING INSTRUCTIONS

DATED FEBRUARY 14TH - DELETE AND REPLACE PREVIOUS ONES

The Organising Authority (OA) is the Yacht Club Sanremo, in conjunction with Italian Sailing Federation. Notations:

The notation '[NP]' in a *rule* means that a breach of the *rule* may not be subject of a protest by a boat. The notation '[DP]' in a *rule* means that the penalty for a breach of the *rule* may, at the discretion of the protest committee, be less than disqualification.

The notation '[SP]' in a *rule* means that a breach of the *rule* will be subject to a standard or discretionary penalty without hearing.

1. RULES

- **[DP][NP]** The special regulation “PROTOCOLLO DI REGOLAMENTAZIONE DELLE MISURE PER IL CONTRASTO ED IL CONTENIMENTO DELLA DIFFUSIONE DEL COVID-19 NELLE SOCIETÀ E ASSOCIAZIONI SPORTIVE AFFILIATE” (further referenced to as “Covid Protocol”), issued by National Authority Federazione Italiana Vela FIV (Italian Sailing Federation), , version updated October 8th, 2020 or any subsequent versions, published on <http://www.federverla.it/news/2718-aggiornato-il-protocollo-di-sicurezza-federazione-italiana-vela.html>.
- - the *Rules* as predefined in -WS Racing Rules 2021-2024 (RRS), included valid Prescriptions of the Italian Sailing Federation FIV, which are available in English at https://www.sailing.org/documents/racingrules/national_prescriptions.php and which will be posted in the on line ONB.
- For the Italians competitors the “Normativa” in force of the Italian Sailing Federation will apply.
- The official language of the event is English
- In case of conflict between NOR and SI, the SI will take precedence; this modify RRS 63.7.

2. NOTICES TO COMPETITORS

In compliance with Covid Protocol, Official Notice Board (ONB), communication to competitors and from competitors to the OA, CR and Jury, shall be done only as an Online Official Notice Board, available at the following link <https://www.racingrulesofsailing.org/documents/1599/event> or QR code:



This communications will be done by e-mail or WhatsApp messages; this last by a group where is possible to enter by this QRCode:



Or sending by WhatsApp to the number +14154807420 the message: Event:1599

FOR FULL EFFICENCY OF THE DESCRIBED SYSTEM, IT IS COMPULSORY THAT ALL CREWS (HELMSMAN AND BOWMAN) WILL INFORM OA BY THE ENTRY FORM THE OWN EMAIL ADDRESS AND WHATAPP PHONE NUMBER.

Each crew is responsible to adjust yourself to such system

3. CHANGES TO SAILING INSTRUCTIONS

Any change to the sailing instructions will be posted at least two hours before the first scheduled warning signal for the race of the day it will take effect, except that any change to the schedule of races will be posted before **7.00** p.m on the day before it will take effect.

4. SIGNALS MADE ASHORE

4.1 Signals made ashore will be displayed at the signal mast located in front of the Race Office.

4.2 When flag AP is displayed ashore '1 minute' is replaced with 'not less than 50 minutes'. This changes Race Signals.

4.3 When Flag D is displayed ashore, the Warning Signal will be displayed no less than 50 minutes after the Flag D is displayed or not before the scheduled time , whichever is later. **[NP] [DP] [SP]** Boats shall not leave the shore until this signal is displayed.

5. SCHEDULE

5.1 **[NP] [DP]** Registration will take place between 09:00 a.m. and 06:00 p.m Wednesday 17th, and Thursday 18st between 09:00 a.m. to 10.30 a.m.

5.2 SCHEDULE OF RACES:

Date	Day	1 st Warning Signal	Event
Day 1 18 th February	Thursday 11:00 a.m. Coach meeting	12.30h	Races
Day 2 19 st February	Friday	10.00h	Races
Day 3 20 nd February	Saturday	10.00h	Races
Day 4 21 rd February	Sunday	10.00h	Races - Award Ceremony

5.3 FLEETS ARE AS FOLLOWS: SCHEDULE

CLASS	Qualification Series	Final Series	Total number of races	Maximum races per day
SINGLE FLEET	--	--	11	2 first day 3 other days
SPLIT FLEET	Min 4 race	Max 6 race	11	2 first day 3 other days

5.4 Number of races:

Possibly 11 races in total are provided. No more than 2 races shall be sailed for the first day, no more than 3 races for the others days.

5.5 The warning signal for each succeeding race will be made as soon as possible.

5.6 To alert boats that a race or sequence of races will begin soon, the orange starting line flag will be displayed with one sound for at least five minutes before a warning signal is displayed.

5.7 No warning signal will be given after 03.00 p.m. on the last day

6. REGATTA FORMAT

6.1 The format of racing is as follows:

6.2 For 470 class the event is sailed as a single fleet than the Carnival Race will be scheduled as 11 single races.

6.3 For 420 Women the event is sailed as a single fleet than the Carnival Race will be scheduled as 11 single races.

6.4 For 420 Open until 80 boats the event is sailed as a single fleet. If more of 80 boats, the O.A. can be decided to split the fleets in 2 groups.

6.4.1 QUALIFYING SERIES

(a) Boats will be assigned to fleets: **YELLOW AND BLUE** of equal size and ability as possible. Initial assignments will be made by the O.A.

Those assignments will be posted by 11.00 a.m. on 18th February

- (b) In the qualifying series boats will be re-assigned to fleets after each day of racing. If all fleets have completed the same number of races, boats will be re-assigned on the basis of their rank in the series. If all fleets have not completed the same number of races the series scores for re-assignment will be calculated for those races, numbered in order of completion, completed by all fleets. For two fleets and similarly for any other number, re-assignments will be made as follows:

RANK IN SERIES	FLEET ASSIGNMENT
FIRST	YELLOW
SECOND	BLU
THIRD	BLU
FOURTH	YELLOW
FIFTH	YELLOW
SIXTH	BLU
AND SO ON...	

If two or more boats have the same rank, they will be entered in the left column in the order of fleets in SI 6.5(a).

- (c) Assignments will be based on the scores available at 21:00 that day regardless of protests or requests for redress not yet decided.
- (d) If all fleets have not completed the same number of races by the end of a day, the fleets with fewer races will continue racing the following day until all fleets have completed the same number of races. All boats will thereafter race in the new fleets.

6.4.2 FINAL SERIES

- (a) Boats will be assigned to Final Series fleets Gold, Silver on the basis of their ranks in the Qualifying Series. There will be the same number of fleets in the Final Series as there were in the Qualifying Series. The Final Series fleets will have, as nearly as possible, equal size but none larger than the Gold fleet. Boats with the best Qualifying Series rank will race all Final Series races in the Gold fleet. Boats with the next-best Qualifying Series ranks will race in the Silver fleet, etc.
- (b) Any recalculation of Qualifying Series rankings after boats have been assigned to Final Series fleets will not affect the assignments except that a redress decision may promote a boat to a higher fleet.

7. CLASS FLAG

470 SINGLE FLEET	WARNING SIGNAL CLASS FLAG
420 OPEN SINGLE FLEET	WARNING SIGNAL FLAG BLU
420 OPEN DIVIDED INTO 2 FLEETS	WARNING SIGNAL FLAGS BLU AND YELLOW
420 WOMEN SINGLE FLEET	WARNING SIGNAL PINK FLAG

8. THE RACING AREAS

Attachment A shows the location of racing area. The racing area will be one for both classes.(470 &420)

9. THE COURSES

- 9.1 The diagram in Attachment B, shows the course, the course designation, the approximate angle between legs, the order in which marks are to be passed, and the prescribed side for each mark.
- 9.2 **COURSES WILL NOT BE SHORTENED. THIS CHANGES RRS 32.**
- 9.3 No later than the warning signal, the Race Committee will display the course designation (**PENNANT 1 INNER COURSE PENNANT 2 OUTER COURSE**). The Race Committee may also display the approximate compass bearing of the first mark.
- 9.4 At a gate, boats shall sail between the gate marks from the direction of the previous mark and round either gate mark.

9.5 If instead of the gates 3s/3p and 4s/4p will be placed only one mark, this one will have to be rounded at port.

10. MARKS

10.1 Marks 1, 2 and 3s/3p and 4s/4p will be Orange cylindrical inflatable buoys.

10.2 The finishing mark is Yellow cylindrical inflatable buoy.

11 THE START

11.1 Races will be started by using rule 26. The warning signal as per above point 7.

11.2 The starting line will be between a staff displaying an orange flag on the Principal Race Committee Vessel at starboard end and a staff displaying an orange flag on the Race Committee Vessel at the port end.

[DP] [NP] [SP] Boats whose warning signal has not been made shall avoid the starting area.

The starting area is defined as 50 meters from the starting line and its extensions in all directions.

[NP] A boat starting later than 4 minutes after her starting signal will be scored DNS. This changes RRS A4 and A5.

[NP] The Race Committee Vessel on the starting line may maintain their position by using their engine(s) and failure to keep clear of these boats shall not be grounds for redress under rule 62.1(a).

12 CHANGE OF THE NEXT LEG OF THE COURSE

12.1 Course will not be change. THIS CHANGES RRS 33

13. THE FINISH

13.1 The finishing line for both racing area will be between a Race Committee Vessel with an **blue** flag and an yellow mark.

14 [NP] TIME LIMITS AND TARGET TIMES

14.1 Time limits are follows:

CLASS	Time Limit	Mark 1 Time Limit	Finish Window	Race Target Time
470	70	25	15	45
420	70	25	15	45

14.2 If no boat has passed Mark 1 within the Mark 1 time limit, the race shall be abandoned.

14.3 Boats failing to finish within the time stated in the Finish Window after the first boat sails the course and finishes will be scored Did Not Finish (DNF) without a hearing. This changes RRS 35, RRS A4 and RRS A5.

14.2 Failure to meet the target time will not be grounds for redress. This changes RRS 62.1(a).

15 PENALTY SYSTEM

[NP] A boat that has taken a penalty under rule 44, or has retired, shall complete an acknowledgement form at the race office within the protest time limit. This requirement does not apply to boats penalized according to appendix P.

16 PROTESTS AND REQUESTS FOR REDRESS

16.1 [NP] If the protestor does not finish the race he must inform the Race Committee Boat as soon as possible or the Race Office and immediately after arriving ashore. This change RRS 61.

16.2 Protests shall be delivered there within the protest time limit.

16.2.the protest will be posted by the dedicated pages on www.racingrulesofsailing.org. See SI 2.2.

16.3 The protest time limit is 60 minutes after the last boat has finished in the last race of the day, or after the displaying of a signal showing the abandon of the races of the day, what is the later. This time will be posted on the official notice board. The same protest time applies to all protests by the race committee and the jury and to requests for redress. This changes Rule 61.3 and 62.2

16.4 Notices will be posted possibly within 30 minutes of the protest time limit to inform competitors of hearings in which they are parties or named as witnesses. Hearings will be held in the jury room, located nearby to the race office.

16.5 Notice of protests by the race committee or jury will be posted to inform boats under rule 61.1(b). By the display of such notice, competitors shall be considered adequately informed of a protest by the race committee or the jury.

16.6 For the purposes of rule 64.3(b) the "authority responsible" is the Measurer or Equipment Inspector appointed by the organising authority.

- 16.7 [DP] Breaches of Class Rules may be less than disqualification.
 16.8 A list of boats that have been penalized under Appendix P for breaking RRS 42 will be posted

17 SCORING

- 17.1 One race is required to be completed to constitute a series.
 17.2 Discards:
 When from 1 to 4 races have been completed, a boat’s series score will be the total of her race scores.
 When from 5 to 11 valid races have been completed, a boats series score will be the total of her races scores excluding her worst score
 17.3 Prizes will be given as stated in the Notice of Race.

18 [NP][DP]SAFETY REGULATIONS

- 18.1 A boat that retires from a race must notify the race committee as soon as possible.
 18.2 A boat that retires from racing must notify the Race Committee before leaving the racing area, or if that is not possible, must notify the race office as soon as possible after do returning ashore.
 18.3 Boats not leaving the harbor for the day's races must notify the race office as soon as possible

19 REPLACEMENT OF CREW OR EQUIPMENT

- 19.1 Substitution of competitors will not be allowed without prior written approval of the Race Committee.
 19.2 Substitution of damaged or lost equipment will not be allowed unless approved by the Race Committee.
 Requests for substitution shall be made to the Race Committee at the first reasonable opportunity.

20 EQUIPMENT AND MEASUREMENT CHECKS

- 20.1 A boat or equipment may be inspected at any time for compliance with the class rules and sailing instructions. On the water, a boat can be instructed by a race committee measurer to proceed immediately to a designated area for inspection.

21 [NP][DP]SUPPORT BOATS

- 21.1 Support, including coach, press private and spectator boats shall register at the Race Office during the registration period (SI 5.1) and be issued with an identity flag, such flag to be displayed at all times when afloat.
 21.2 Subject to SI 21.6, team leaders, coaches and other support boats shall stay more than 100 metres outside the restricted area and from any racing boat from the time of the preparatory signal until all boats have finished or the Race Committee signals a postponement, general recall or abandonment.
 21.3 Support boats shall not interfere with any competitor.
 20.4 Support boats shall not pass any information by any means whatsoever to competitors who are racing, RRS 41.
 21.5 Communication by radio (including mobile phones) is prohibited between competitors and any support boats. Support boats shall not communicate with or transfer goods or equipment to or from, their competing boats from the time of the preparatory signal until all boats have finished or the Race Committee signals a postponement, general recall or abandonment.
 21.6 At all times, support boats shall comply with the directions given by the Race Committee. In particular this includes assisting with rescues when requested to do so.
 21.7 Support boats must be on standby on VHF Channel 72 at all times
 21.8 According to RRS 60.3 (d) a Protest Committee may call a hearing to consider whether a *support person* – has broken a *rule*, including any of these SI. According to RRS 64.5 the Protest Committee may penalize a competitor for the breach of a *rule* by a *support person*.

22 [NP][DP]VHF RADIOS

Except in an emergency, a boat shall neither make nor receive radio transmissions while racing except those available to all boats. This restriction also applies to mobile telephones.

23 [NP][DP] OFFICIAL BOATS

OFFICIAL BOAT	FLAG
RACE COMMITTEE 420 OPEN/WOMEN AND 470	YACHT CLUB SANREMO BURGEE
JURY BOATS (JURY)	YELLOW FLAG WITH J
MEASURER BOAT	BLUE FLAG WITH M
PRESS BOATS	WHITE FLAG WITH P

24 DISCLAIMER OF LIABILITY

Competitors participate in the regatta entirely at their own risk. See rule 3, Decision to Race. The organizing authority will not accept any liability for material damage or personal injury or death sustained in conjunction with or prior to, during, or after the regatta.

25 TRASH DISPOSAL

In additional RRS 4 trash may be placed aboard Supports boats and Race Committee Vessels.

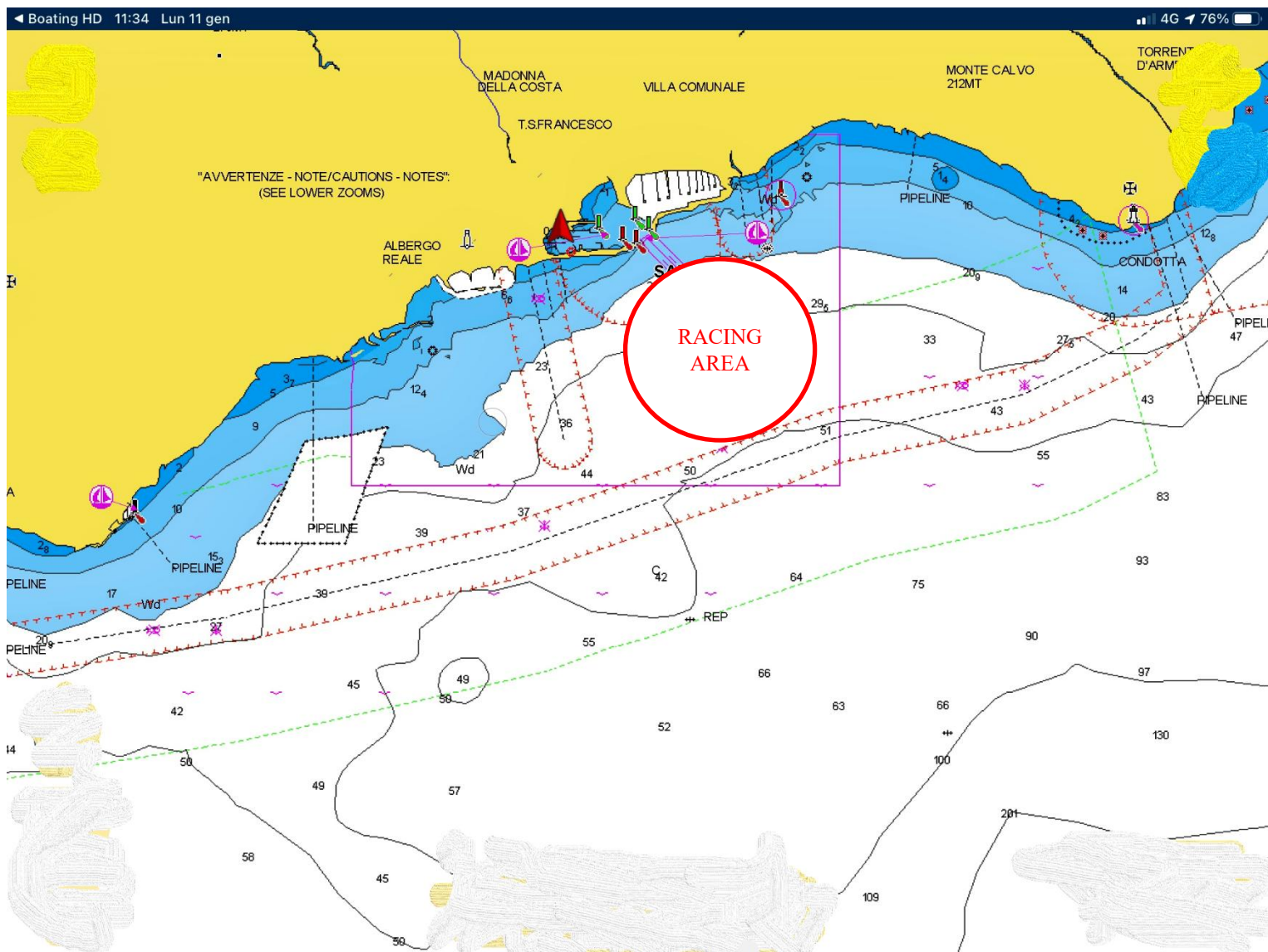
26 INSURANCE

Each participating boat shall be insured with valid third-party liability insurance with a minimum cover of 1.500.000 € (one million and five hundred euros) per event or the equivalent. In alternative the Italians competitors can to have the FIV member card type PLUS. Competitors are advised to have their own personal accident insurance.

27 [NP][DP]ADVERTISING

In accordance with Regulation 20.4.1 boats shall display sponsor advertising stickers supplied by the organizing authority.

ATTACHMENT “A” RACING AREAS

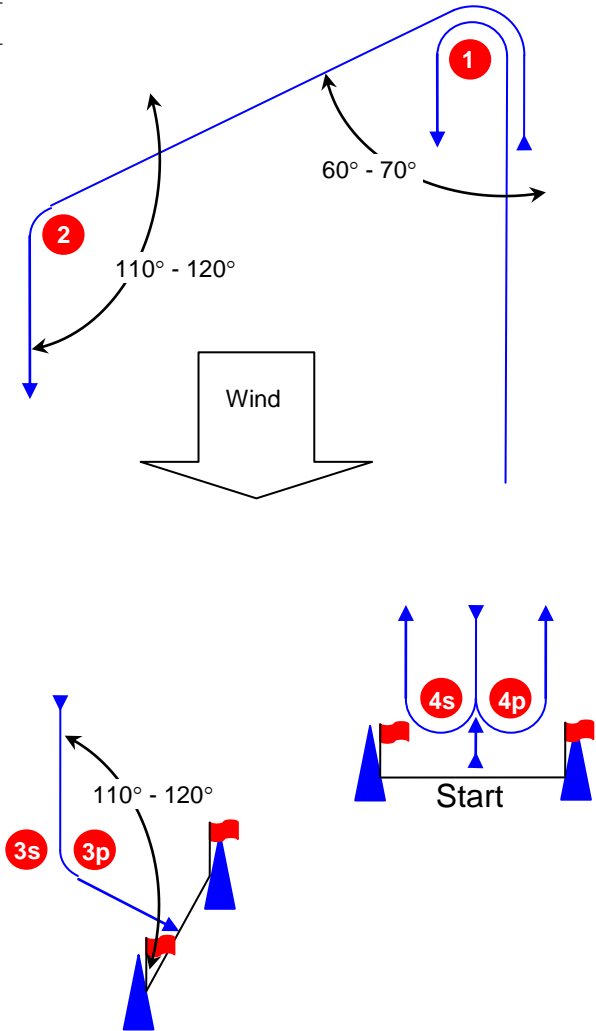


ATTACHMENT "B"

Course Illustrations – Trapezoid separate finishing line

Boats at both ends of the starting line and finishing lines

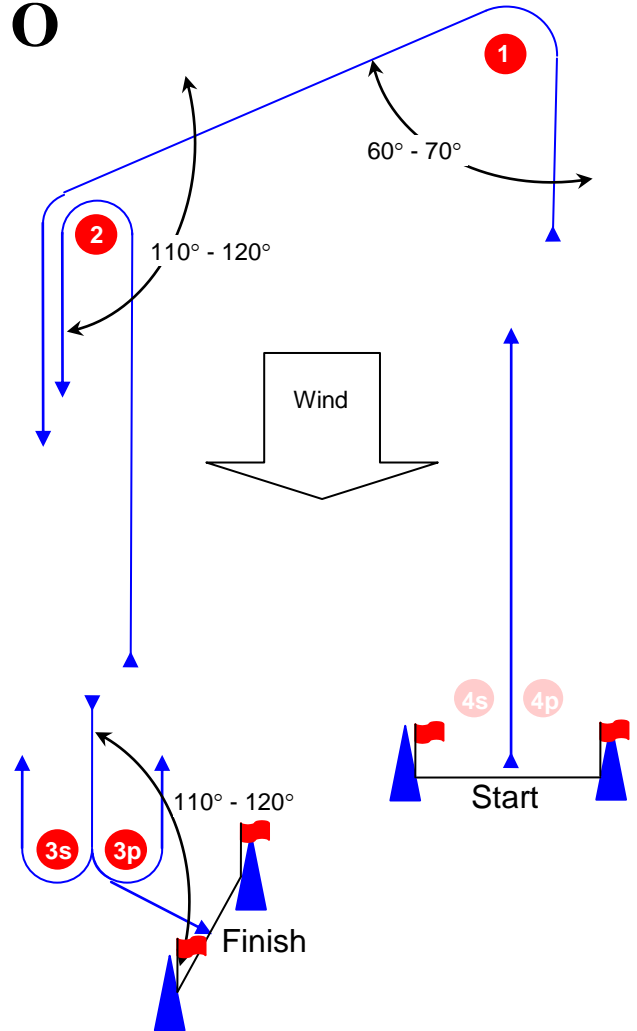
I



Course: Inner Trapezoid

Signal **I2** Mark Rounding Order
Start – 1 – 4s/4p – 1 – 2 – 3p – Finish

O



Course: Outer Trapezoid

Signal **O2** Mark Rounding Order
Start – 1 – 2 – 3s/3p – 2 – 3p – Finish

