

## SAILING INSTRUCTIONS

2019 Europe Open Week & World Championship will be held from 29<sup>th</sup> July to 9<sup>th</sup> August in Sant Andreu de Llaneres (Barcelona) – Spain. The Organizing Authority is Club Nàutic El Balís in conjunction with the International Europe Class Union (IECU) and with the approval of Royal Spanish Sailing Federation (RFEV).

### 1. Rules

- 1.1. The Regatta will be governed by the Rules as defined in the Racing Rules of Sailing.
- 1.2. Rules defined on the Notice of Race.
- 1.3. No National Prescriptions will apply.
- 1.4. Appendix P (Special Procedures for Rule 42) will apply. Regarding Rule P5, in accordance with Class Rule 4.2, the recommended wind speed is 12 knots.
- 1.5. Appendix T (Arbitration) will apply.
- 1.6. Decisions of the International Jury will be final as provided in RRS 70.5.
- 1.7. **[DP]** Europe class Rules.
- 1.8. The IECU Rules for Mayor Events will apply.
- 1.9. The notation **[NP]** in a Rule of this SI means that a breach of this Rule shall not be grounds for protest by a boat. This changes RRS 60.1(a).
- 1.10. Substitution of competitors are not permitted.

### 2. Notices to competitors

- 2.1. Notices to competitors will be posted on the Official Notice Board (ONB) located next to the Race Office entrance (blue building). Copies of Official Notices will be published at the event web site ([www.ewc.cnelbalis.com](http://www.ewc.cnelbalis.com)), but in this case, any discrepancy with the ONB will not be grounds for redress (this changes RRS rule 62.1(a)).

### 3. Changes to Sailing Instructions

- 3.1. Any change to the Sailing Instructions will be posted one hour before the first warning signal of the day it will take effect, except for any change to the schedule of the races which will be posted by 19:00 hrs on the day before the change will take effect.

### 4. Signals made ashore

- 4.1. Signals ashore will be displayed on the El Balís corporate flag pole located between the Race Office and the Club house (see Addendum B2 – Facilities and harbour allocations).
- 4.2. When flag AP is displayed ashore, “1 minute” is replaced by “not less than 45 minutes” in the Race Signal AP. This changes Race Signal AP.
- 4.3. **[DP] [NP]** When signal AP over H is displayed ashore competing boats are required to stay ashore. This changes Race Signal AP over H.
- 4.4. When a signal is displayed over a fleet flag, it applies to that fleet only. This changes preamble of Race Signals.
- 4.5. When flag L is displayed ashore over a numeral pennant, the number of the pennant correspond to the last number of Official Notice published.

## 5. Competition format

### 5.1. Open Week:

5.1.1. Up to 8 mixed (men & women) fleet races will be sailed.

5.1.2. IN CASE OF GROUPS (according to Notice of Race point 10.1), participants will compete in two fleets, identified as Yellow and Blue. This situation will be announced by the Official Notice Board at the end of the registration day (or days before if the decision is already taken). Assignment to groups will be posted at least one hour before the first schedule warning signal on that day in accordance with the following procedure:

**Initial allocation:** the initial allocation will be made by a Seeding Committee appointed by the Organising Authority and composed by the IECU President, the PRO and the Race Director, and it will be divided in two equal groups. The allocation will not be grounds for redress. This changes rule 62.1(a)

**Daily re-allocation:** at the end of each racing day, if all boats have completed at least one race, the boats will be allocated to new groups based on their overall standings at that time and according to the following scheme: 1st Yellow - 2nd Blue - 3rd Blue - 4th yellow - 5th yellow - 6th blue, and so on. Assignments will be based on the scores available at 20:00 that day regardless of protests or requests for redress not yet decided.

**If groups have completed an unequal number of races,** the re-allocation will be based on those races completed by all groups. In this case, the fleets with fewer races will continue racing the following day until all fleets have completed the same number of races, and with the new identification ribbon described at SI 8.1.1, although it not corresponding with the previous day colour [DP] [NP]. All boats will thereafter race in the new fleets.

### 5.2. World Championship:

5.2.1. Up to 10 fleet races will be sailed.

5.2.2. Men and Women will compete in separate division fleet racing.

## 6. Schedule

### 6.1. Open Week event schedule

Date	Event	Time	Location/remarks
Monday, 29 <sup>th</sup> July	Open Week Registration Coaches and sailors meeting	0900-1900 hrs. 1800 hrs	Race Office Sports meeting room (blue building)
Tuesday, 30 <sup>th</sup> July	First Warning Signal	1200 hrs.	2 Races scheduled
Wednesday, 31 <sup>st</sup> July	Daily meeting First Warning Signal	0930 hrs. 1200 hrs.	Sports meeting room (blue building) 2 Races scheduled
Thursday, 1 <sup>st</sup> August	Daily meeting First Warning Signal	0930 hrs. 1200 hrs.	Sports meeting room (blue building) 2 Races scheduled
Friday, 2 <sup>nd</sup> August	Daily meeting First Warning Signal Open Week Prize Giving	0930 hrs. 1200 hrs. TBC	Sports meeting room (blue building) 2 Races scheduled As soon as possible after races

6.2. On Friday 2<sup>nd</sup> August 2019 no Warning Signal will be made after 1600 hrs.

## 6.3. World Championship event schedule (modifies NoR schedule):

Date	Event	Time	Location/remarks
Saturday, 3 <sup>rd</sup> August	World Champ. Registration Measurements Nations Cup sailors & coach meeting NATIONS CUP	0900-1900 hrs. 0900-1900 hrs. 0930 hrs. 1200 hrs.	Race Office Measurement Area Sports meeting room (blue building) See "Attachment C" of this SI
Sunday, 4 <sup>th</sup> August	World Champ. Registration Measurements Open Ceremony	0900-1800 hrs. 0900-1800hrs. 1900 hrs.	Race Office Measurement Area To be confirmed
Monday, 5 <sup>th</sup> August	Coaches and sailors meeting First Warning Signal – Men First Warning Signal – Women	0930 hrs. 1200 hrs. 1210 hrs.	Sports meeting room (blue building) 2 Races scheduled 2 Races scheduled
Tuesday, 6 <sup>th</sup> August	Daily meeting First Warning Signal – Women First Warning Signal – Men	0930 hrs. 1200 hrs. 1210 hrs.	Sports meeting room (blue building) 2 Races scheduled 2 Races scheduled
Wednesday, 7 <sup>th</sup> August	Daily meeting First Warning Signal – Men First Warning Signal – Women Sailors dinner	0930 hrs. 1200 hrs. 1210 hrs. 2000 hrs.	Sports meeting room (blue building) 2 Races scheduled 2 Races scheduled Balís social building (beach area)
Thursday, 8 <sup>th</sup> August	Daily meeting First Warning Signal – Women First Warning Signal – Men	1030 hrs. 1300 hrs. 1310 hrs.	Sports meeting room (blue building) 2 Races scheduled 2 Races scheduled
Friday, 9 <sup>th</sup> August	Daily meeting First Warning Signal – Men First Warning Signal – Women World Championship Prize Giving	0930 hrs. 1200 hrs. 1210 hrs. TBC	Sports meeting room (blue building) 2 Races scheduled 2 Races scheduled As soon as possible after races

6.4. On Friday 9<sup>th</sup> August 2019 no Warning Signal will be made after 1600 hrs.

6.5. The Organizing Authority reserves the right to change both schedules.

6.6. One extra race may be sailed per day, provided that no group / fleet becomes more than one race ahead of schedule and the change is made according to SI 3.

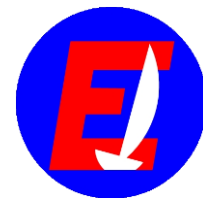
## 7. Class flag

- 7.1. **Open Week:**
- No groups (unique fleet): Class logo over white background
  - Yellow group: Class logo over yellow background
  - Blue group: Class logo over blue background
- 7.2. **World Championship:**
- Men fleet: Class logo over white background
  - Women fleet: Class logo over blue background

## 8. Fleets identifications [DP] [NP]

### 8.1. Open Week:

- 8.1.1. In case of groups, at registration each competitor will receive two ribbons, one yellow and one blue. While racing competitors will fly from the masthead the colour ribbon according to their assigned daily group. Competitors will retain both ribbons for the duration of the regatta and they should be returned the last racing day of the Open Week (Friday 2<sup>nd</sup> August). Replacements will be provided at cost of 5.-€, except in the event of loss due to collision at sea or other reasonable justification.



## 8.2. World Championship:

- 8.2.1. At registration each competitor will receive one ribbon, corresponding to their respective fleet (yellow for Men and blue for Women). While racing competitors will fly from the masthead the corresponding ribbon. Competitors will retain the ribbons for the duration of the regatta. Replacements will be provided at cost of 5.-€, except in the event of loss due to collision at sea or other reasonable justification.

## 9. Racing area

- 9.1. The racing area is located in front of El Balís marina (see Attachment B1)

## 10. Courses

- 10.1. The diagrams in Attachment A show the courses, including the approximate angles between legs, the order in which marks are to be passed, and the side on which each mark is to be left.
- 10.2. No later than the Warning Signal, the Race Committee signal vessel will display the approximate compass bearing of the first leg and the course to be sailed.
- 10.3. If for any unexpected reason any of the buoys of the Mark 3 and/or 4 (gates) is/are not in place, the remaining mark shall be left to port.
- 10.4. Races will not be shortened. This changes RRS 32.

## 11. The start

- 11.1. Races will be started using either rule 30.3 (U Flag Rule), or 30.4 (Black Flag Rule).
- 11.2. The starting line will be set between masts showing an ORANGE flags at the Race Committee boats.
- 11.3. The Warning Signal for the next sequence will be given as soon as practicable after the previous start.
- 11.4. To alert sailors that a new group of sequences is soon to begin (new race), the ORANGE flag defined at SI 11.2 will be displayed with one sound at least 5 minutes before the first warning signal of the first start of the sequences.
- 11.5. The starting area is defined as a rectangle of 50 meters from the starting line in all directions.
- 11.6. **Open Week:** In case of groups, the order of the starts will be determined by the corresponding class/group flags. Race Committee will in principle keep the starting orders every day the same. In case of the races will not be completed for all groups, next day will continue on that point.
- 11.7. Boats who's Warning Signal has not been displayed, shall keep clear of the starting line of the preceding start. **[DP] [NP]**

## 12. Change of the next leg of the course

- 12.1. To change the next leg of the course, the Race Committee will lay a new mark, move the leeward gate (or move the finishing line) and remove the original mark as soon as practicable according to RRS 33.

## 13. The finish

- 13.1. The finishing line will be between the mast showing an ORANGE flag at a Race Committee boat at the starboard-end and an inflatable GREEN cylinder mark at the port-end.



## 14. Marks

- 14.1. The Starting marks will be Race Committee vessels on both end of the line.
- 14.2. The Finishing marks will be a Race Committee vessel and an inflatable GREEN cylinder mark
- 14.3. Marks 1 and 2 will be ORANGE inflatable cylinders.
- 14.4. Marks 3s, 3p, 4s, 4p will be YELLOW inflatable cylinders.
- 14.5. The new marks will be RED inflatable cones.

## 15. Penalty system

- 15.1. Appendix P will apply with the following changes:
  - 15.1.1. RRS P2.3 will not apply and RRS P2.2 is changed such that it will apply to any penalty after the first one.
  - 15.1.2. If a first penalty is signalled after a boat has crossed the finish line, a scoring penalty of 10% rounded to the whole number (rounding 0.5 upwards) of the number of entries will be added to the boats score. However, she shall not be scored worse than DSQ.

## 16. Times limit

- 16.1. Times limit and target times for the first boat are as follows:

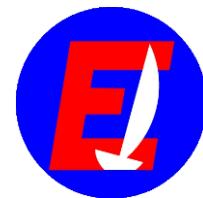
Mark 1 Time Limit 25 minutes (*)	Course target time 50 minutes	Race Time Limit 90 minutes
-------------------------------------	----------------------------------	-------------------------------

(\*): If no boat has passed Mark 1 within the Mark 1 Time Limit, the race shall be abandoned.

- 16.2. Noncompliance of the target times shall not be grounds for redress. This changes rule 62.1 (a)
- 16.3. Boats failing to finish within 15 minutes after the first boat sails the course and finishes (finish window) will be scored DNF without a hearing. This changes RRS Rule 35, Appendix A.4 and Appendix A.5.

## 17. Protests and requests for redress

- 17.1. Protests and requests for redress or reopening shall be written on forms available at the Race Office and delivered within the appropriate Time Limit.
- 17.2. The Protest Time Limit is 60 minutes after the last boat has finished the last race of the day or the Race Committee signals “no more racing today”, whichever is later. The Protest Time Limit will be posted on the Official Notice Board (and in case of groups may be different for each group).
- 17.3. In order to inform boats according to RRS 61.1. (b), protests by the Race Committee, Protest Committee or Technical Committee will be published on the ONB before by the Protest Time.
- 17.4. The schedule of hearings will be posted not later than 30 minutes after the Protest Time Limit. Hearings will be held in the protest rooms located at the first floor of the blue building, next to the Race Office.
- 17.5. A list of boats that have been penalized under Appendix P for breaking RRS 42 will be posted.
- 17.6. On the last day of racing, a request for redress based on the Protest Committee decision shall be delivered no later than 30 minutes after the decision was posted. This changes RRS 62.2.



## 18. Scoring

- 18.1. **Open Week:** In case of groups, RRS A4.2 is changed so that the scores are based on the number of boats assigned to the largest group (yellow or blue).
- 18.2. **World Championship:** comprise of two separate rankings, one for Men and one for Women.
- 18.3. A boat starting later than 4 minutes after her starting signal will be scored Did Not Start without a hearing. This changes RRS A4 and A5.
- 18.4. Discards will be applied as defined on the Notice of Race.
- 18.5. To request correction of an alleged error in posted race or series results, a boat must complete a scoring enquiry form available at the Race Office.

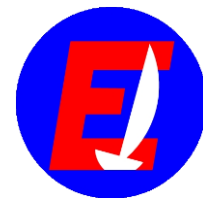
## 19. Safety [DP][NP]

- 19.1. Competitors shall wear personal flotation devices at all times **while afloat**, except briefly while changing or adjusting clothing or personal equipment. This changes RRS 40.
- 19.2. During registration each competitor will receive a personal identification card with the respective sail number and shall be fixed to the boat trolley (dolly) handle, in such a way that the number is easily seen. All boats while not racing shall only be located at the boat's parking area and on her respective trolley with the identification mentioned. **Boats are not allowed to use other trolleys except the one with her respective identification card.** In case of a participant lose the identification, more cards will be available at the Race Office.
- 19.3. **All boats while not racing shall only be located at the assigned boat's parking area.** In case of a participant decides to leave, shall inform immediately to the Race Office.
- 19.4. A boat that retires from a race shall notify the Race Committee or the Race Office as soon as possible. Verbal communication from coaches are allowed.
- 19.5. Except in emergency, boats shall only come ashore at Port Balís facilities.
- 19.6. Boats arriving for any reason at a point ashore other than Port Balís shall report immediately by telephone to **Regatta Coordinator (+34) 609 610 111** or to the **Race Office (+34) 937 929 900**.
- 19.7. The Race Committee, the Regatta Coordination Centre, the Race Office and the Safety Boats will use **VHF 72** channel for their communications.
- 19.8. When the Race Committee displays **flag "V"** with repetitive sounds or broadcasts 'Code Flag Victor' on the designated VHF Channel, all official and coach boats shall monitor radio conversations in order to collaborate with search, rescue and other safety issues.
- 19.9. Boats failing to obey this Sailing Instruction can be required to pay the expenses of search and rescue operations and should be reported to the Maritime Authorities with their consequences.

## 20. Replacement of equipment [DP]

- 20.1. Competitors may have available for use not more than:  
1 Hull, 1 Mast, 1 Boom, 1 Rudder Blade, 1 Rudderstock, 1 Centreboard and 2 Sails.
- 20.2. For the World Championship, only equipment that has been measured or controlled by the regatta Technical Committee may be used.
- 20.3. Substitution of damaged or lost equipment will not be allowed unless approved by the Technical Committee. In the event of damage or lost, boats and equipment may only be substituted with the written permission. Requests for substitution shall be made at the first reasonable opportunity.





20.4. If the damage or lost occurs later than 90 minutes before the first scheduled start on a racing day and before the start of the last race of the day, provisional verbal authorisation shall be given by the Race Committee. In this case, the written permission shall be applied for before the end of Protest Time of the day in which the substitution takes place.

## 21. Equipment and Measurement Checks [NP][DP]

21.1. A boat or equipment may be inspected at any time for compliance with the Class Rules and Sailing Instructions. On the water, a boat can be instructed by the any Race Committee member or the Technical Committee assistants to proceed immediately to a designated area for inspection.

21.2. If a breach of a measurement rule is considered by the event Technical Inspector to be minor and such that it does not affect the performance or safety of a boat, the penalty may be less than disqualification if the Protest Committee so decides.

## 22. Official boats

22.1. The Official Boats will display a white flag with the following letters in black according to their tasks:

Race Committee boats:	"RC"	Jury boats:	"JURY"
Rescue boats:	"RSQ"	Technical Committee boats:	"M"
Media boats:	"PRESS"	Guests and authorities:	"VIP"

## 23. Advertising

23.1. The organising authority may require competing boats to carry event sponsor advertising as provided by WS Regulation 20. [DP]

## 24. Support boats [NP][DP]

24.1. Support boats shall display their national flag or national letters at least 200mm high and clearly visible from both sides of their boats.

24.2. Team leaders, coaches and other support persons shall not interfere with boats racing or official boats, or create a wake that affects boats racing, and shall stay outside areas where boats are racing (see restricted area at Attachment B1) from the time of the Preparatory Signal for the first class to start until all boats have finished or retired or the Race Committee signals a Postponement, General Recall or Abandonment for all fleets.

24.3. All support person boats will be stand by on VHF 72 channel at any time while don't be docked and drivers shall wear a kill cord while the engine is running.

24.4. Special Safety Procedure and Regulations will be announced at the Coach and Team Leathers daily meetings.

## 25. Trash disposal [DP] [NP]

25.1. Trash may be placed aboard support and Race Committee boats.





## 26. Radio communication and other transmissions

26.1. A boat shall neither make any kind of radio / data transmissions while racing nor receive communications not available to all boats, except in an emergency or when using equipment provided by the Organizing Authority. This restriction also applies to mobile telephones.

## 27. Media rights and photography consent

27.1. By entering the Regatta competitors accept that they may be photographed and/or videotaped participating in the regatta and/or using the regatta facilities and they consent to the taking of such images and to the use, reuse, publication and republication of such images in any media, in conjunction with the competitors name or not, without compensation and without the competitors approval of such images or any use thereof.

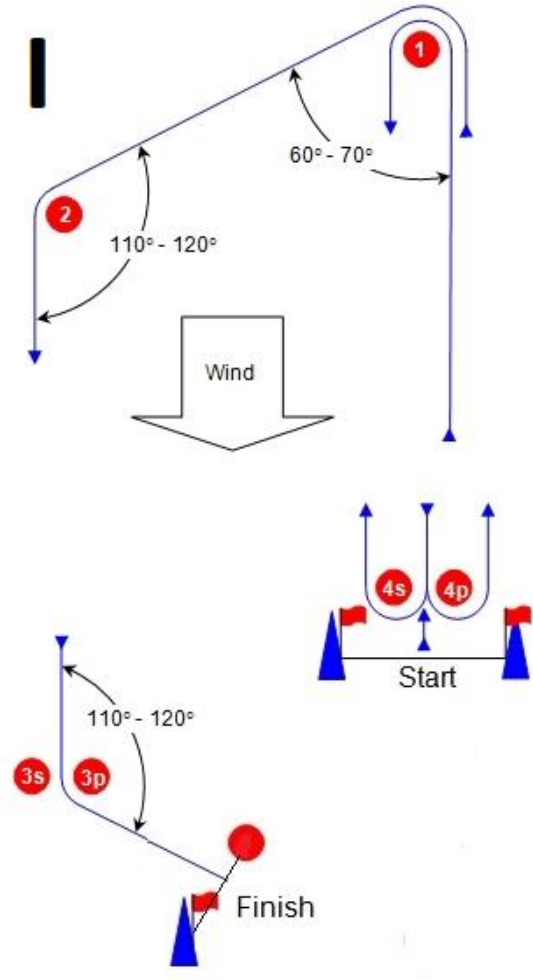
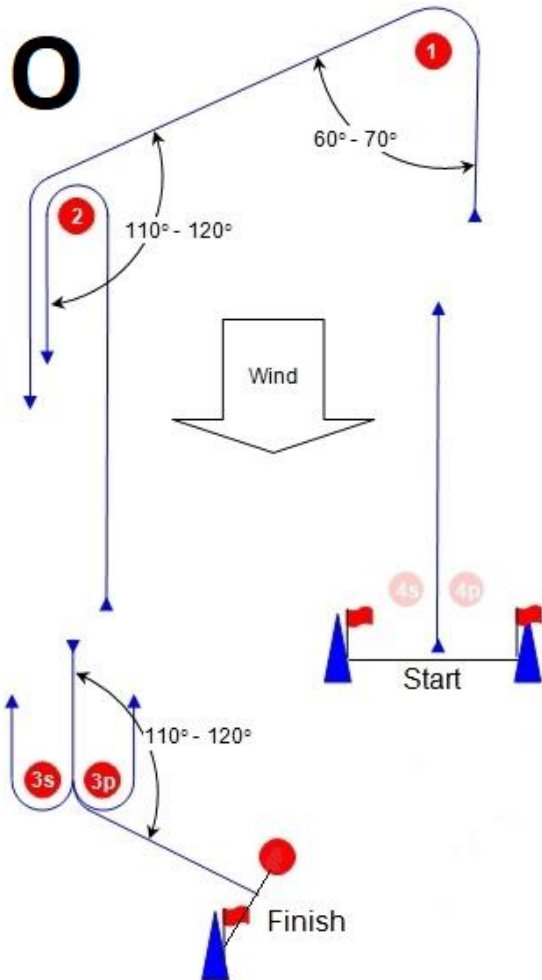
## 28. Disclaimer of Liability

28.1. All those taking part in the event do so at their own risk and responsibility. The Organizing Committee or any part involved with the Organization of the event disclaim any and every responsibility whatsoever for loss, damage, injury or inconvenience that might occur to persons and goods, both ashore and at sea as a consequence of participation in the races covered by the Notice of Race and the Sailing Instructions. Attention is drawn to the RRS Fundamental Rule 4 – Decision to Race, which states: “The responsibility for a boat’s decision to participate in a race or to continue racing is hers alone”.





## ATTACHMENT "A" COURSES



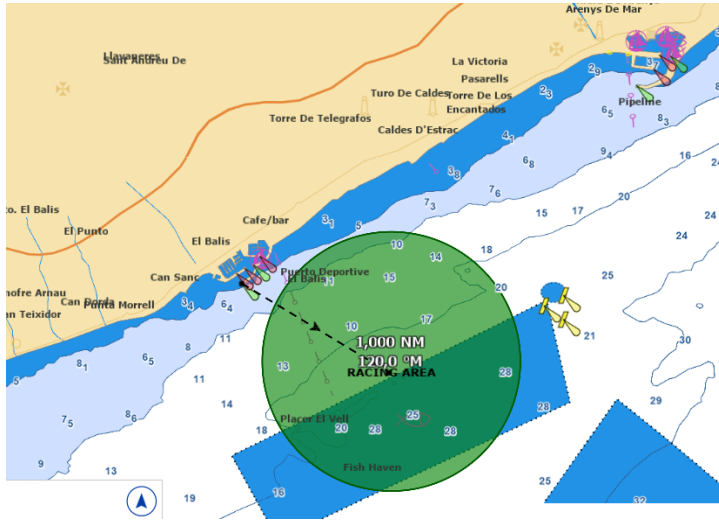
<b>O2</b>	Start – 1 – 2 – 3s/3p – 2 – 3p – Finish
<b>O3</b>	Start – 1 – 2 – 3s/3p – 2 – 3s/3p – 2 – 3p – Finish

<b>I2</b>	Start – 1 – 4s/4p – 1 – 2 – 3p – Finish
<b>I3</b>	Start – 1 – 4s/4p – 1 – 4s/4p – 1 – 2 – 3p – Finish

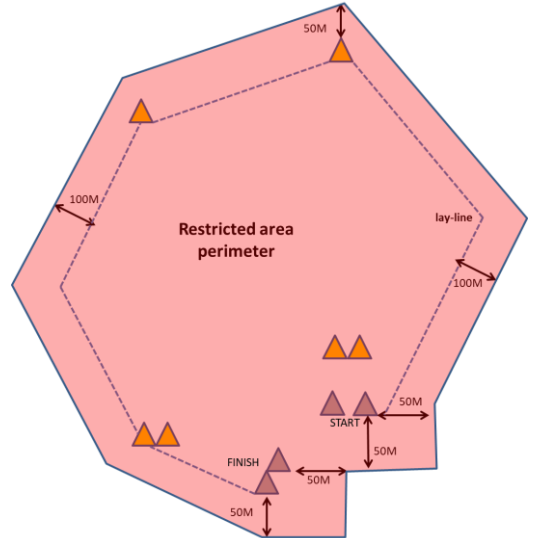
Except in a gate, all marks have to be left to port

## ATTACHMENT "B" MAPS AND FACILITIES LOCATION

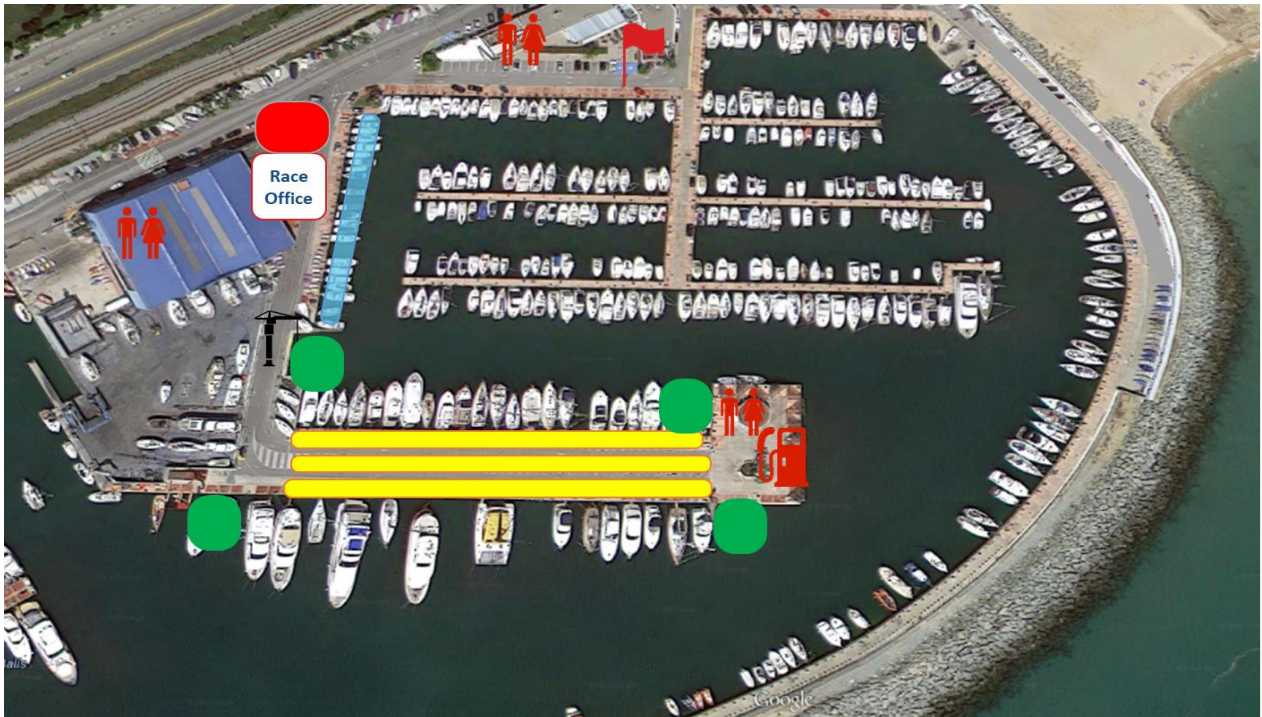
### B1 Racing area



### Restricted area



### B2 Harbour facilities and service allocations



-  Ribbs morings
-  Trailers parking
-  Equipment Inspection -Measurements-
-  Boats parking
-  Boats Ramps
-  Official flags pole

## ATTACHMENT "C" NATIONS CUP SAILING INSTRUCTIONS

### 1. Rules

- 1.1. Racing will be governed by the Rules as defined in the Racing Rules of Sailing.
- 1.2. Appendix D (Team Racing Rules), including D2.2 applies.
- 1.3. RRS D1.1 (d) is deleted. No arm signals required.

### 2. Communication with competitors

- 2.1. In addition of the General Sailing Instructions, changes to Rules that affect to the Nations Cup, may be changed orally on water by the Race Committee and/or Umpires before the Warning Signal when flag L is displayed. It is the responsibility of each team to obtain any oral instructions given from the boat with L flag. These changes will also be posted ashore on the Official Notice Board.
- 2.2. Results and pairing on water will only be displayed on board of the **INFO Committee Boat**. No information will be available on the starting and finishing boats, except as established by SI C.3.4. INFO Committee boat will be anchored in the *Waiting Area*, displaying a green flag (See SI C.12)

### 3. Event Format and Schedule of Races

- 3.1. The Official Pairing and Initial Schedule will be published on the Official Notice Board at least one hour before the first Warning Signal.
- 3.2. The Nations Cup will comprise of a Qualifying Round Robin series, which will be followed by the Semi-final and Final Stages. Teams will be assigned to initial Round Robin and matches by draw.
- 3.3. Every race will be assigned a number in the race schedule.
- 3.4. The number of the next race to start and the next correspondent pairing to be sailed, will be displayed on the starting Committee boat no later than the Warning Signal.
- 3.5. The Official composition of the groups, matches and results will be posted on the **INFO Committee Boat**. At the end of the day, official results will be posted at the ONB.
- 3.6. Scoring will be applied according to Appendix D and details published with the Official Initial Schedule and Pairing mentioned on SI C.3.1.

### 4. The Start

- 4.1. Races will be started according RRS 26 with the following changes (this changes RRS 26):

Signal	Minutes before start	Sound signal	Visual signal	Action
<b>Warning</b>	3	One	Class flag*	Display
<b>Preparatory</b>	2	One	P flag	Display
<b>Last minute</b>	1	One long	P flag	Remove
<b>Start</b>	0	One	Class flag*	Remove

(\*): Class flag will be a Europe class logo over white background

- 4.2. When orange flag described at SI C.8.1 is displayed, a Warning Signal could be done at any time.
- 4.3. When a boat is subject to RRS 29.1, flag X need not be displayed for more than 1 minutes after the starting signal. This changes RRS 29.1.
- 4.4. A boat shall not start more than 2 minutes after her starting signal.



## 5. Time limits and Abandoning Races

- 5.1. The time limit for each race shall be 20 minutes.
- 5.2. The Race Committee may abandon a race for any reason. This changes RRS 32.

## 6. Racing area and courses

- 6.1. The racing area will be next to El Balís harbour, in front of the club house zone.
- 6.2. The course is shown in Addendum C.12.
- 6.3. A boat not complying with RRS 28.1 will be scored 10 points. This changes RRS D3.
- 6.4. Target time for the course is 10 minutes.
- 6.5. RRS 33 (change of course) will not apply. The Race Committee may adjust marks of the course at any time.

## 7. Marks

- 7.1. Marks features
  - 7.1.1. Course marks 1 and 2 will be orange inflatable cylinders
  - 7.1.2. Course marks 3 and 4 will be yellow inflatable cylinders
  - 7.1.3. Starting and finishing marks will be green inflatable cylinders

## 8. Starting & Finishing Lines

- 8.1. The starting line will be between the starting mark on the port end of the starting line, and the pole with an orange flag on a Committee boat on the starboard end.
- 8.2. The finishing line will be between the finishing mark on the port end of the finishing line, and the pole with a blue flag on a Committee boat on the starboard end.

## 9. Protests, Requests for Redress and Penalties

- 9.1. Protests and requests for redress shall be delivered to the Protest Committee.
- 9.2. The protest time limit is 2 minutes after the last boat has finished in each match.
- 9.3. The Protest Committee will hold the hearings on water to decide on protests and request for redress that have not been decided while racing. When the outcome of a protest or request for redress would not affect which teams qualify to a later Stage, the Protest Committee may refuse to hear it. This changes RRS 63.1.

## 10. General Sailing Instructions

- 10.1. The following general SI will be applied: 4, 10.4, 19, 20, 21, 22, 23, 24, 25, 26, 27 and 28.
- 10.2. SI 11.7 will be applied adding to the term “starting line”, the terms “course and their respective lay lines” [DP] [NP]
- 10.3. “Restriction Zone” mentioned on SI 24.2 should be adapted to the Nations Cup course described on SI C.12, and according to SI C.11. [DP] [NP]

## 11. Waiting area [DP] [NP]

- 11.1. All boats while not racing will stay in the “Waiting Area” described on SI C.12.
- 11.2. Except in case of justified assistance or help, all coaches will stay in the waiting area described on SI C.12.



## 12. Nations Cup course diagram

12.1. Course will be: start, mark 1 (starboard), mark 2 (starboard), mark 3 (port), mark 4 (port), Finish

