

SAILING INSTRUCTIONS

The Organizing Authority validated by the Portuguese Sailing Federation, is constituted by the Atlantic Watersports Committee, City of Viana do Castelo and Clube de Vela de Viana do Castelo, together they present this event that will be held between the 12th and 15th of July 2022, in the racing area of Viana do Castelo.

ABBREVIATIONS

SP	Rules for which a standard penalty may be applied by the race committee without a hearing, or a discretionary penalty applied by the Jury with a hearing
DP	Rules for which the penalties are at the discretion of the Jury.
NP	Rules that are not ground for protest by a boat. This changes Racing Rule of Sailing 60.1 (a)

1 RULES

- 1.1 The Championship will be governed by the 'rules' as defined in The Racing Rules of Sailing (RRS).
- 1.2 If there is a conflict between languages the English text will take precedence.

2 CAMERAS AND ELECTRONIC EQUIPMENT [NP][DP]

- 2.1 Boats may be required to carry cameras, sound equipment or positioning equipment as specified by the organizing authority. Information from this equipment shall not be used by a boat as evidence in a hearing. This changes rule 63.6.
- 2.2 The equipment provided, once placed on the boat as instructed by the organizing authority, shall not be manipulated by the competitor or the coach in any way, except when so required by the organizing authority.

3 COMMUNICATIONS WITH COMPETITORS

- 3.1 Notices to competitors will be posted on the Official Notice Board located in this link: <https://www.racingrulesofsailing.org/documents/4360/event?name=xxiii-jogos-nauticos-atlanticos-2022>.
- 3.2 In the Racing Rules of Sailing application, athletes will have access to all official communications, protests, requests for classification review and more. For installation:
IOS:
<https://apps.apple.com/pt/app/racingrulesofsailing-org/id1443702609>
Android:
https://play.google.com/store/apps/details?id=org.idhra.racingrulesofsailing.competitor&hl=en_US&gl=US



- 3.3 To improve communication between Race Committee/ Organizing Authority with coaches and athletes, a group will be created in the Whatsapp application. QR code to access this group:



- 3.4 When a visual signal is displayed over a fleet(s) flag, the signal applies only to that fleet(s). This changes the Race Signals preamble.
- 3.5 Signals made ashore will be displayed from the official flagpole located in the boat park.
- 3.6 [SP][NP] [DP] Flag D displayed with one sound means: 'the warning signal will be made not less than 45 minutes after flag D is displayed.' Boats shall not leave their berthing places until this signal is made.

4 CHANGES TO SAILING INSTRUCTIONS

Any change to the Sailing Instructions will be posted on the Official Notice Board before 09:30 hours on the day it will take effect, except that any change to the schedule of races will be posted by 20:00 hours on the day before it will take effect.

5 SCHEDULE OF RACES

- 5.1 Schedule

DAY AND TIME	EVENT
Monday 11 July 10:00 AM to 06:00 PM	Opening of secretariat, Confirmation of entries
Tuesday 12 July 10:00 AM to 5:00 PM	Confirmation of entries
14:00 AM	Team Leaders Meeting
06:00 PM	Opening Ceremony
Wednesday 13 July TBA	Warning Sign 1st race of the day



Thursday 14 July	
TBA	Warning Sign 1st race of the day
Friday 15 July	
TBA	Reserved
04:30 PM	Closing Ceremony

TBA – To be announced

- 5.2 6 races are scheduled. Up to 4 races will be sailed on each day.
- 5.3 To alert boats that a race or sequence of races will begin soon, the orange flag defining the starboard end of the starting line will be displayed with one sound at least five minutes before a warning signal is displayed.
- 5.4 On the last day of racing, no warning signal will be made after 03:00 PM.

6 CLASS FLAGS

- 6.1 Optimist – Class logo with white background
- 6.2 ILCA 4, 6 - Class logo with white background
- 6.3 420 – Class logo with white background

7 RACING AREA

Attachment 1 shows the location of the racing area.

8 THE COURSE

The diagram in Attachment 2 shows the course, including the order in which marks are to be passed, and the side on which each mark is to be left.

9 MARKS

- Rounding Marks will be Orange
- Start and Finish mark will be green

10 THE START

- 10.1 The starting line shall be established between the mast identified by an orange flag placed at RC boat and the starting Mark.
- 10.2 **[DP]** When the warning signal for the first fleet has been made, boats from other fleets shall be in the waiting area. Boats may approach the starting line after the starting signal of the previous fleet.
- 10.3 A boat starting later than 4 minutes after her starting signal will be scored Did Not Start



without a hearing. This changes rules A4 and A5.

11 CHANGE OF THE NEXT LEG OF THE COURSE

- 11.1 To change the next leg of the course the CR will change the position of the original mark or move the Finish line.
- 11.2 Boats shall pass between the race committee boat signaling the next leg change and the nearest mark, leaving the port mark and the race committee boat starboard. This changes rule 28.2.

12 THE FINISH

The finishing line will be between staff displaying blue flags on the RC boat and the finishing mark.

13 PENALTY SYSTEM

- 13.1 **[NP] [DP]** A boat that has taken a penalty or retired according to rule 44.1 shall complete an acknowledgement form On-Line within the protest time limit.
- 13.2 The penalty for breaches of Class Rules will be Standard Penalties [SP] which changes rule RRS 63.1 and may also be less than disqualification.
- 13.3 The penalty for breaches of Sailing Instructions marked **[DP]**, RRS55 (Trash Disposal), and Notice of Race 16.3 may be less than disqualification if the Jury so decides.
- 13.4 Appendix P will apply.

14 TIME LIMITS AND TARGET TIMES

- 14.1 Time limits and target times are as follows:
- 14.2

TIME LIMIT	MARK 1 TIME LIMIT	TARGET TIME
60 minutes	15 minutes	30 minutes

- 14.3 If no boat has passed Mark 1 within the Mark 1 time limit the race shall be abandoned. Failure to meet the target time will not be grounds for redress. This changes rule 62.1(a).
- 14.4 Boats failing to finish within 15 minutes after the first boat sails the course and finishes will be scored Did Not Finish without a hearing. This changes rules 35, A4 and A5.

15 PROTESTS AND REQUESTS FOR REDRESS

- 15.1 To inform the Race Committee of the boat/s being protested, the boat intending to protest shall approach the race committee boat at the starboard end of the finishing line immediately after finishing and shall hail the protested boat's sail number/s while sailing along her starboard side.
- 15.2 Links:



[Online Notice Board](#)

[File a Protest](#)

[Submit Question for Jury](#)

[Submit Scoring Inquiry](#)

[Submit Penalty Report](#)

[Protest Hearing Schedule](#)

[Protest Decisions](#)

[Questions for the Jury](#)

[RRS 42 Penalties](#)

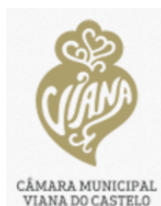
- 15.3 The protest time limit is 60 minutes after the last boat has finished the last race of the day or the Race Committee signal no more racing today, whichever is later.
- 15.4 Notices will be posted on the On-line Notice Board within 30 minutes of the protest time limit to inform competitors of hearings in which they are parties or named as witnesses. Hearings will be held in one of the jury rooms located in the Marina Building.
- 15.5 Notices of protests by the Race Committee or Jury will be posted on the On-Line Notice Board to inform boats under rule 61.1(b).
- 15.6 A list of boats that under instruction 16.4 have been penalized for breaking rule 42 will be posted.
- 15.7 On the last scheduled day of racing (including the last day of qualification and last day of final series) a request for reopening a hearing shall be delivered (this changes rule 66):
- 18.8. (a) within the protest time limit if the party requesting reopening was informed of the decision on the previous day;
- 18.8. (b) no later than 30 minutes after the party requesting reopening was informed of the decision on that day.
- 15.8 On the last scheduled day of racing (including the last day of qualification and last day of final series) a request for redress based on a Jury decision shall be delivered no later than 30 minutes after the decision was posted. This changes rule 62.2.

16 SCORING

- 16.1 1 race are required to be completed to constitute a series.
- 16.2 When fewer than 3 races have been completed, a boat's series score will be the total of her race scores.
- 16.3 When 4 or more races have been completed, a boat's series score will be the total of her race scores excluding her worst score.

19 REPLACEMENT OF EQUIPMENT [DP]

- 19.3 Substitution of damaged or lost equipment will not be allowed unless approved in writing by the Race Committee. Requests for substitution shall be made to the Race Committee at the first reasonable opportunity.



19.4 Substitution of damaged equipment may be permitted provided that the relevant form has been completed at the Race Office and both the damaged and the substituting equipment has been inspected by the Measurement Sub-Committee.

19.5 If the substitution was made on the water between races, both the damaged and the substituting equipment shall be presented to the Measurement Sub-Committee after the end of the day's racing. The substitution is subject to the approval of the Race Committee given retrospectively.

20 EQUIPMENT AND MEASUREMENT CHECKS[NP][DP][SP]

20.3 A boat or equipment may be inspected at any time for compliance with the Class Rules, the Notice of Race, or the Sailing Instructions. The top ten finishing boats of every race shall sail to the Equipment Inspector boat near the finishing line. No adjustments shall be made on the boat before the measurement inspection.

21 OFFICIAL AND ACCREDITED BOATS

21.3 Official boats will be identified as follows:

BOAT	FLAG
Race committee boats	White flag with black RC
Jury boats	Black flag with white 'J'
Rescue boats	White
Support boats	White flag with black RC Clube flag

22 SUPPORT BOATS

22.1[NP] Team Leaders, Coaches and other support personnel shall stay outside areas where boats are or will be racing from the time the orange flag is displayed until all boats of all divisions in that race have finished or the Race Committee signal a postponement or abandonment. To observe a race, support boats may move from leeward to windward through the port side of the course keeping well clear of the exclusion boundary, approximately 100 meters from the course area. Support boats may, after the last start of a race, move between the waiting and the finishing areas through the center channel. (See drawing in Attachment 2). When a race committee or jury member indicates a support boat to move further from the course area, the mentioned boat shall do so immediately.

22.2[DP] All boats associated with the infringing support boat may be penalized at the discretion of the Jury for the race on which the support personnel failed to comply with Notice of Race 15 and/or with instruction 24.1. This changes rule 63.1

22.3 Coaches are encouraged to carry a working VHF radio.



23 TRASH DISPOSAL [NP][DP]

Trash may be placed aboard support and race committee boats.

24 PRIZES

Prizes will be awarded in accordance with the Notice of Race.

25 RISK STATEMENT

Competitors participate in the competition entirely at their own risk. See RRV 4, Decision to Compete. The organizing authority will not accept any liability for material damage, personal injury, or death, which occurred before, during or after the event.

26 INSURANCE [NP]

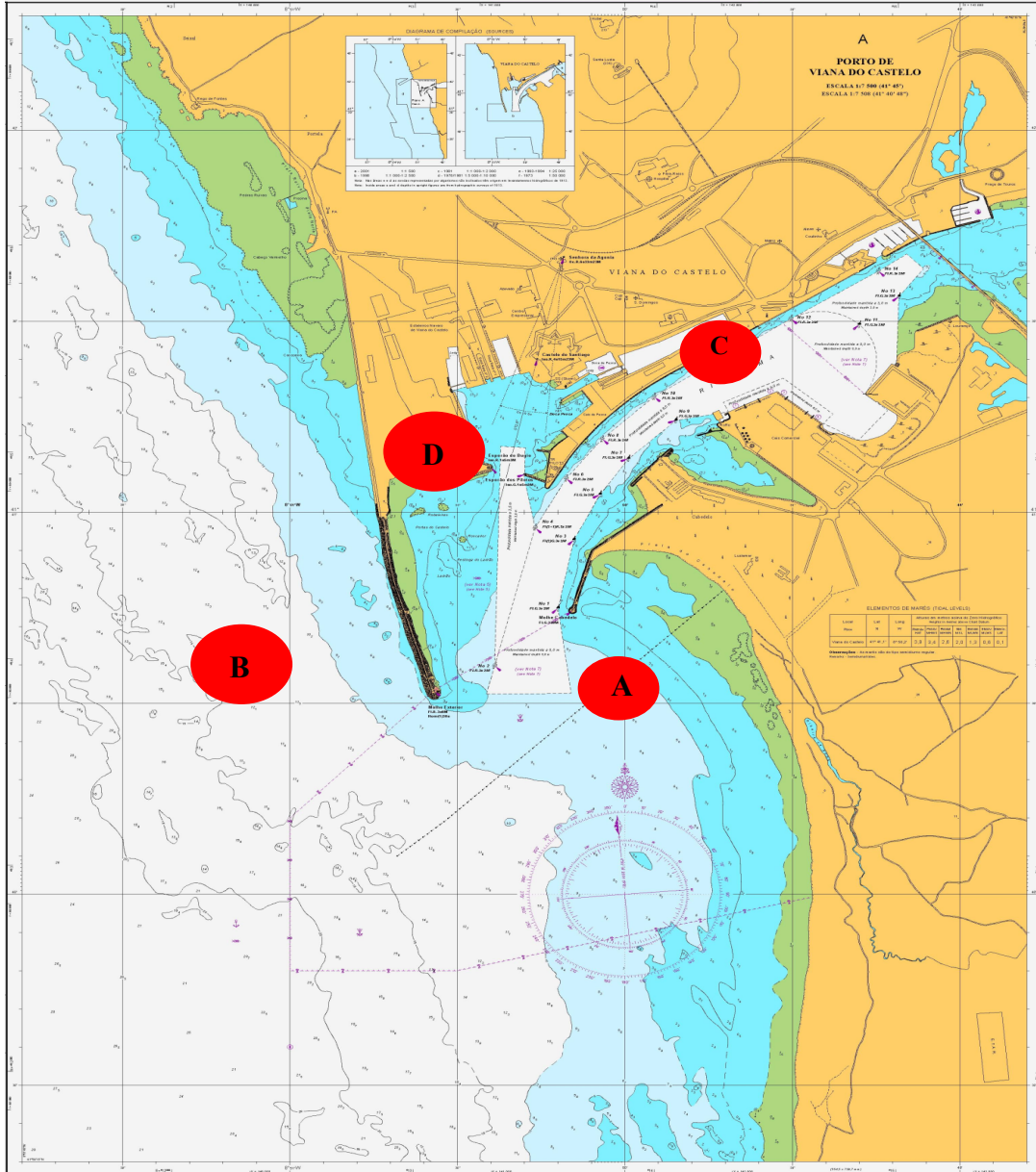
All participating boats must be covered by valid third-party liability insurance with an amount appropriate for the activity.

27 RIGHT TO USE NAMES AND LIKENESS

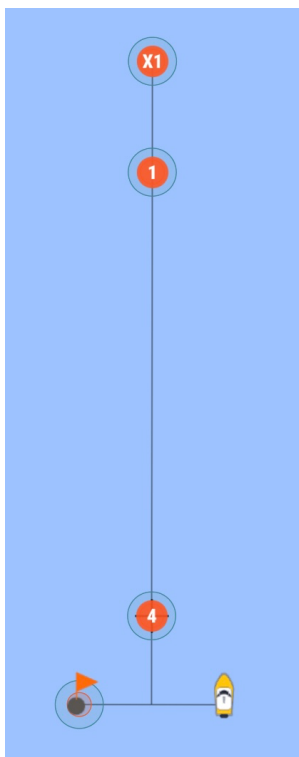
In participating in this championship, a competitor automatically grants to the organizing authority, the sponsors of the championship the right in perpetuity to make, use and show at their discretion any motion pictures, still pictures and live, taped, or filmed television and other reproductions of him or her during the championship, and of all of his or her material related to the championship, without compensation.



ATTACHMENT 1: Racing Areas



ATTACHMENT 2: Course



Optimist: Start – 1 – 4 – 1 – Finish

Other Classes: Start – X1 – 4 – X1 – Finish

ATTACHMENT 3: Standard Penalties

S3.6 Place to stay while flag “D” is not displayed:	
Boat outside the defined location, without authorization from the Organizing Entity:	2 Penalty Points in all races of the day
S19.5 Return from racing area	
Entry into the ramp without authorization from the Organizing Entity:	2 points in the last race of the day