



28th October – 3rd November 2023

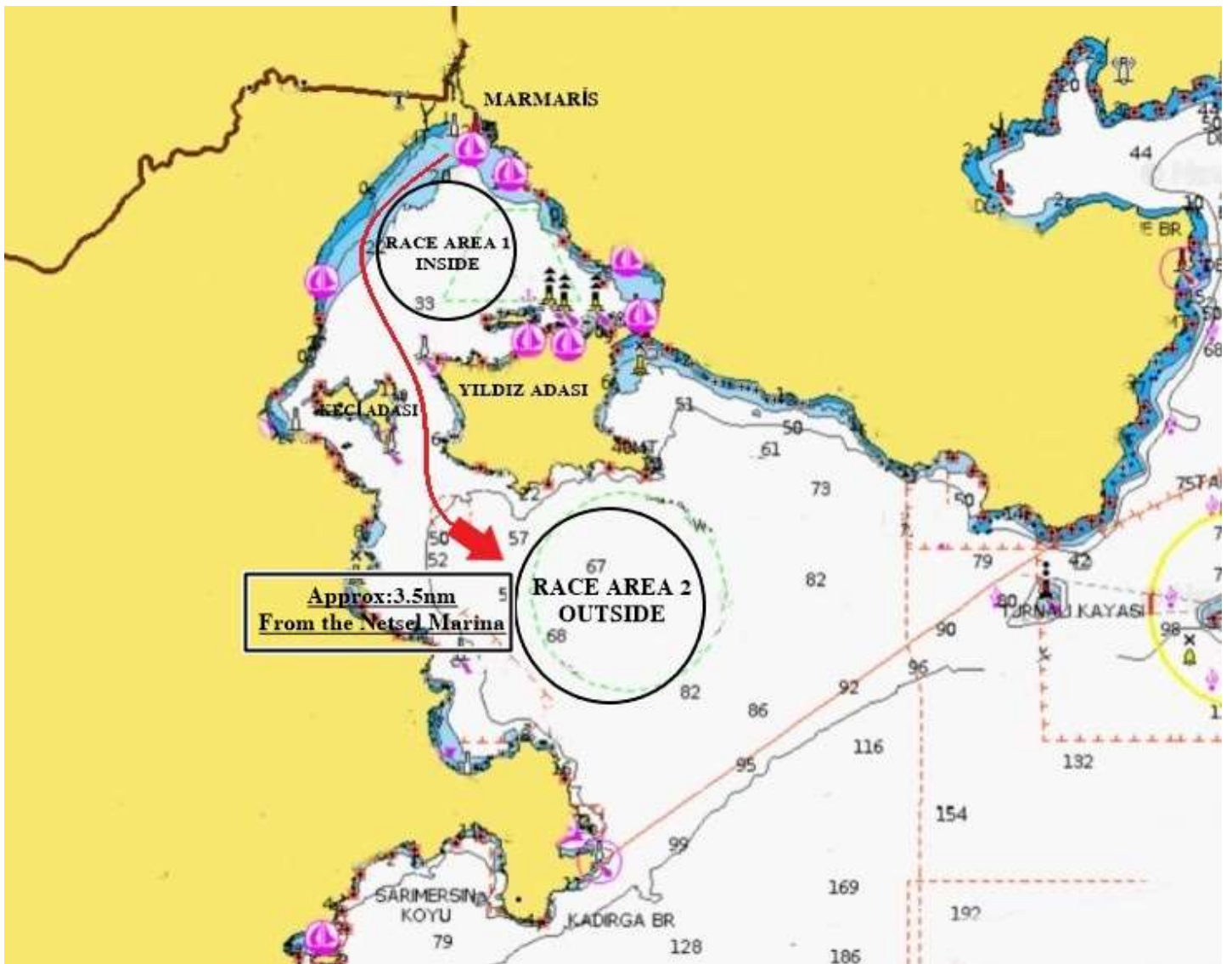
### Attachment 4 : Courses

**\*RC Vessel(s), Marks and buoys locations for the races and the courses will be approximately and shall not be grounds for a request for redress.**

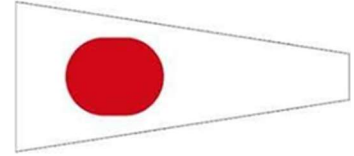


MARMARIS INTERNATIONAL RACE WEEK

INSHORE COURSE AREAS

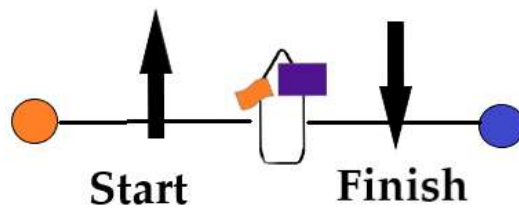
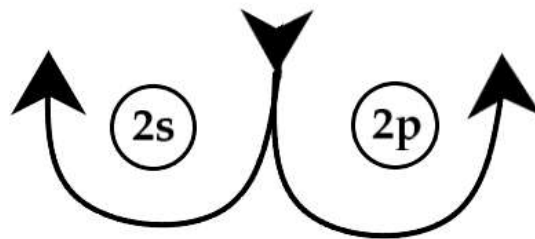
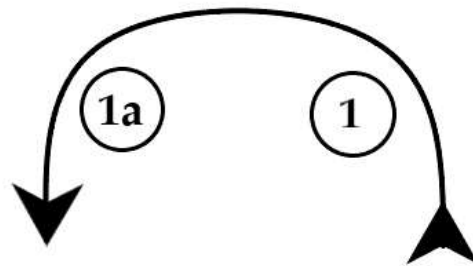


INSHORE COURSE #1



MARK ROUNDING ORDER

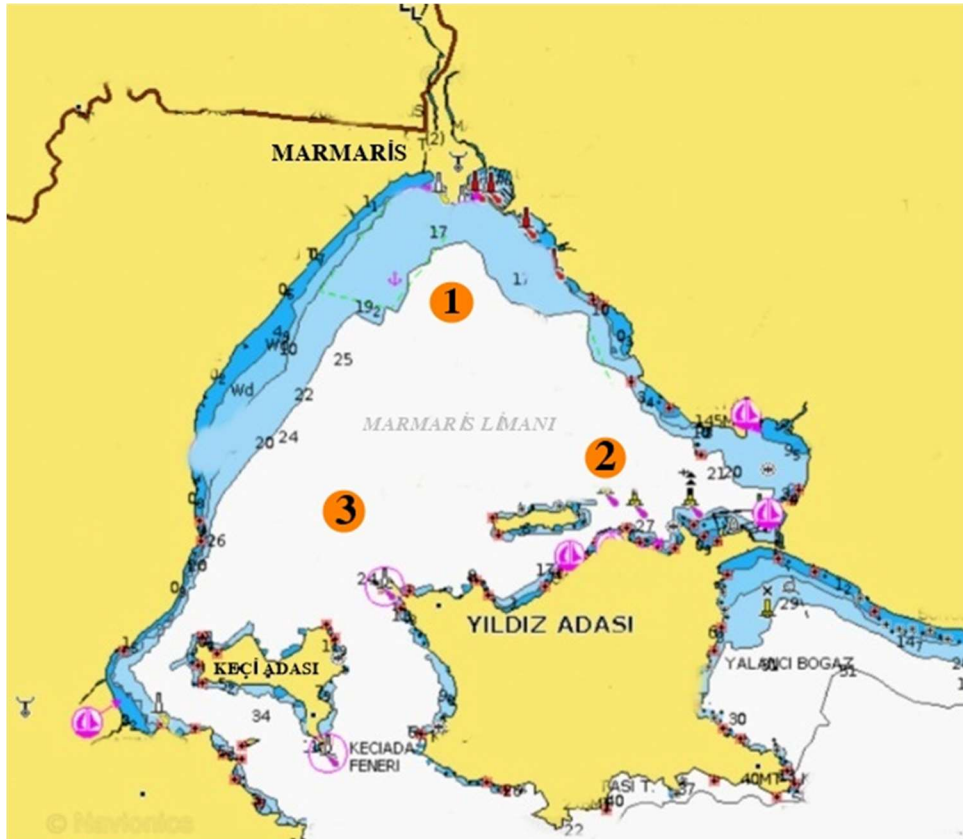
START - 1 - 1A - 2S/2P - 1 - 1A - FINISH





MARMARIS INTERNATIONAL RACE WEEK

## INSHORE (INSIDE) COURSE #2



### Marks at Starboard

ALPHA S (1) - 2 - 3 - 1 - 2 - F (1)

BRAVO S (2) - 3 - 1 - 2 - 3 - F (2)

CHARLIE S (3) - 1 - 2 - 3 - 1 - F (3)

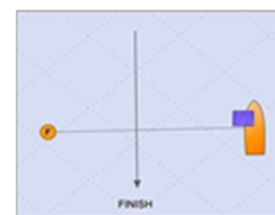
### Marks at Port

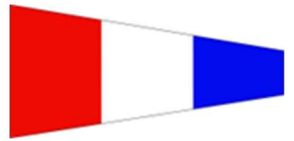
DELTA S (1) - 3 - 2 - 1 - 3 - F (1)

ECHO S (2) - 1 - 3 - 2 - 1 - F (2)

FOXTROT S (3) - 2 - 1 - 3 - 2 - F (3)

### START / FINISH (PIN END)





## INSHORE (OUTSIDE) COURSE #3

START - Mark#2 (to starboard) - Mark #1 (to starboard)- FINISH

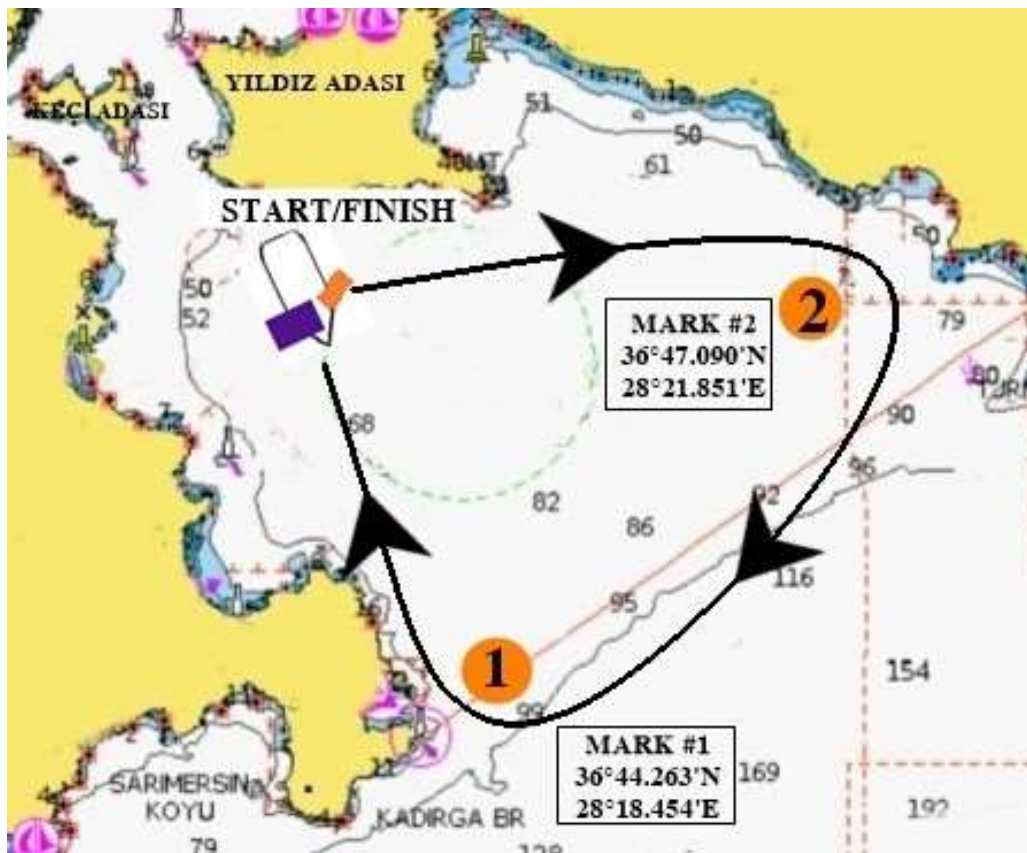
**If necessary:** The RC may set a **Windward Mark** to obtain a start to windward. If the windward mark is set, it will be no more than one (1) nautical mile from the starting line. Before the warning signal, the RC will display a Green flag indicating the windward mark shall be left to starboard or a Red flag which indicates the windward mark shall be left to port



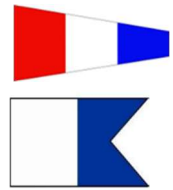
START - Windward Mark (TO STARBOARD)



START - Windward Mark (TO PORT)



## INSHORE (OUTSIDE) COURSE #3-A



START - Mark#1 (to port) - Mark #2 (to port)- FINISH

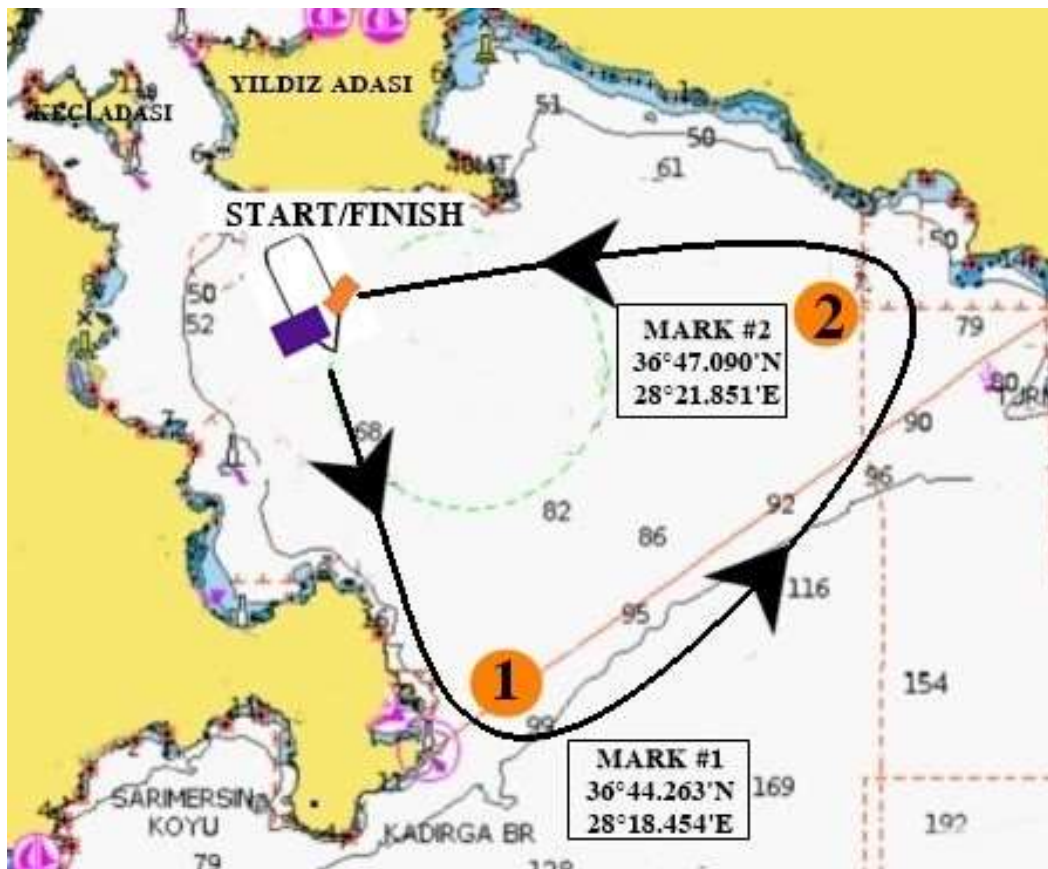
**If necessary;** The RC may set a **Windward Mark** to obtain a start to windward. If the windward mark is set, it will be no more than one (1) nautical mile from the starting line. Before the warning signal, the RC will display a Green flag indicating the windward mark shall be left to starboard or a Red flag which indicates the windward mark shall be left to port



START – Windward Mark (TO STARBOARD)



START – Windward Mark (TO PORT)



## INSHORE (OUTSIDE) COURSE #4



START - Karga Taşı (to port) - Mark #1 (to port)- FINISH

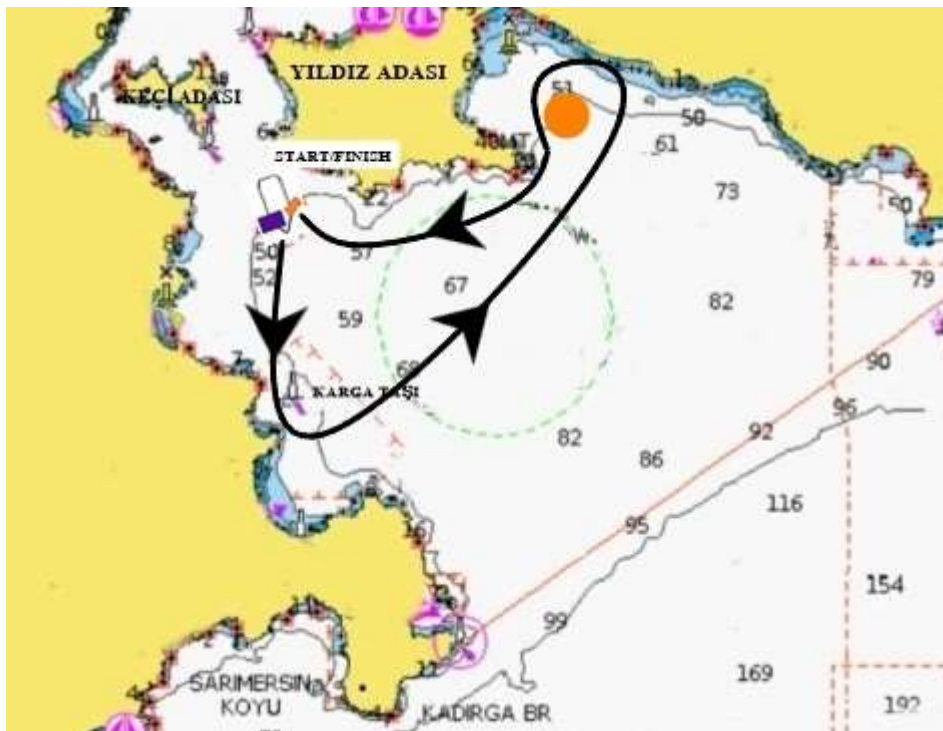
**If necessary:** The RC may set a **Windward Mark** to obtain a start to windward. If the windward mark is set, it will be no more than one (1) nautical mile from the starting line. Before the warning signal, the RC will display a Green flag indicating the windward mark shall be left to starboard or a Red flag which indicates the windward mark shall be left to port



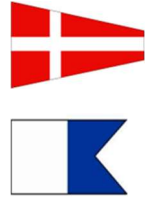
START - Windward Mark (TO STARBOARD)



START - Windward Mark (TO PORT)



INSHORE (OUTSIDE) COURSE #4-A



START - Mark#1 (to starboard) - Karga Taşı (to starboard)- FINISH

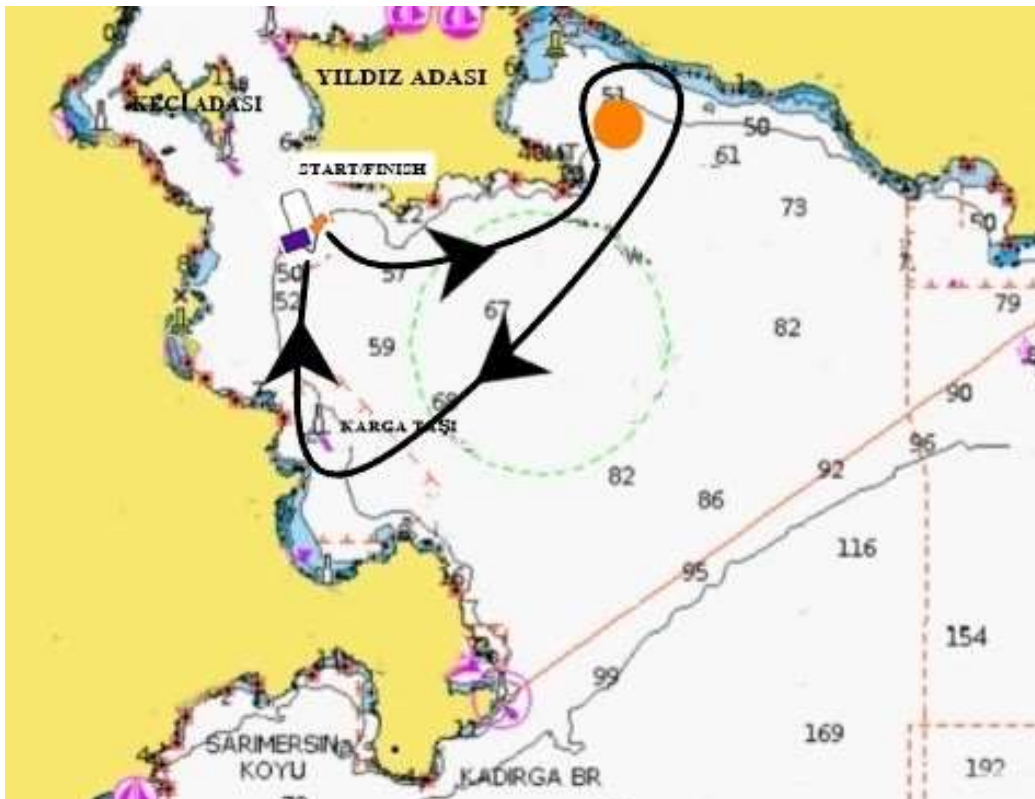
**If necessary;** The RC may set a **Windward Mark** to obtain a start to windward. If the windward mark is set, it will be no more than one (1) nautical mile from the starting line. Before the warning signal, the RC will display a Green flag indicating the windward mark shall be left to starboard or a Red flag which indicates the windward mark shall be left to port



START - Windward Mark (TO STARBOARD)



START - Windward Mark (TO PORT)



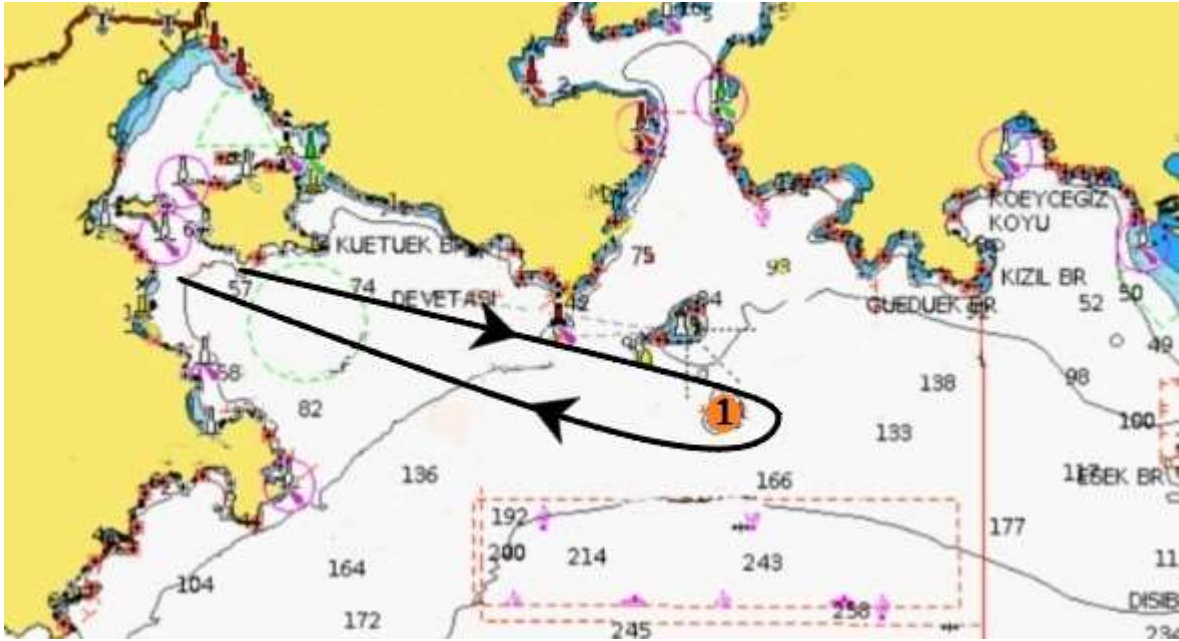


## Coastal Course-A



### ROUNDING ORDER

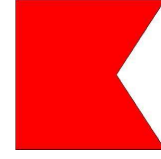
START - Yılandık Adası (leave to Port) - Mark#1 (to starboard) -  
FINISH



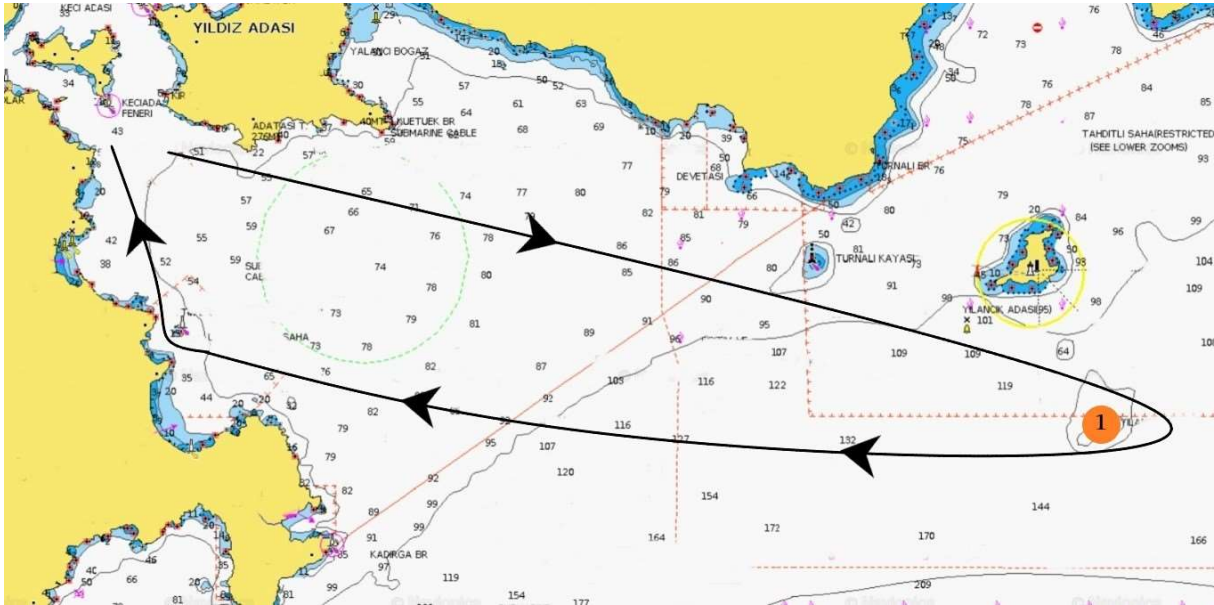
START (RC VESSEL)	:	36°47.279N / 28°17.130E
MARK#1	:	36°44.850N / 28°27.110E
RC FINISHING VESSEL	:	36°47.570N / 28°15.400E



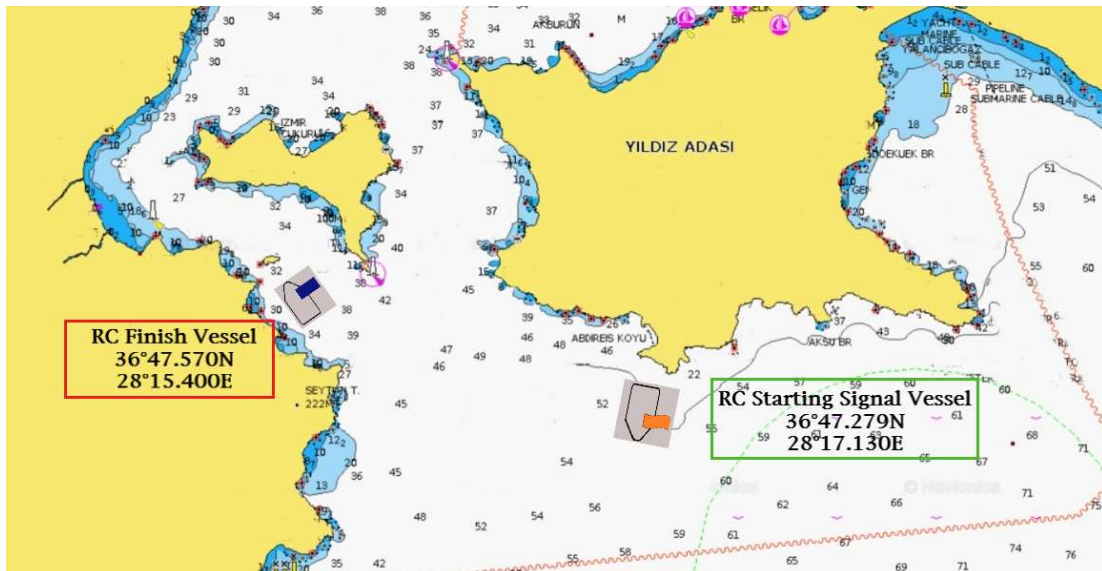
Coastal Course - B  
ROUNDING ORDER



START - Yılançık Adası (leave to Port) - Mark#1 (to starboard) -  
Karga Taşı (to starboard) - FINISH



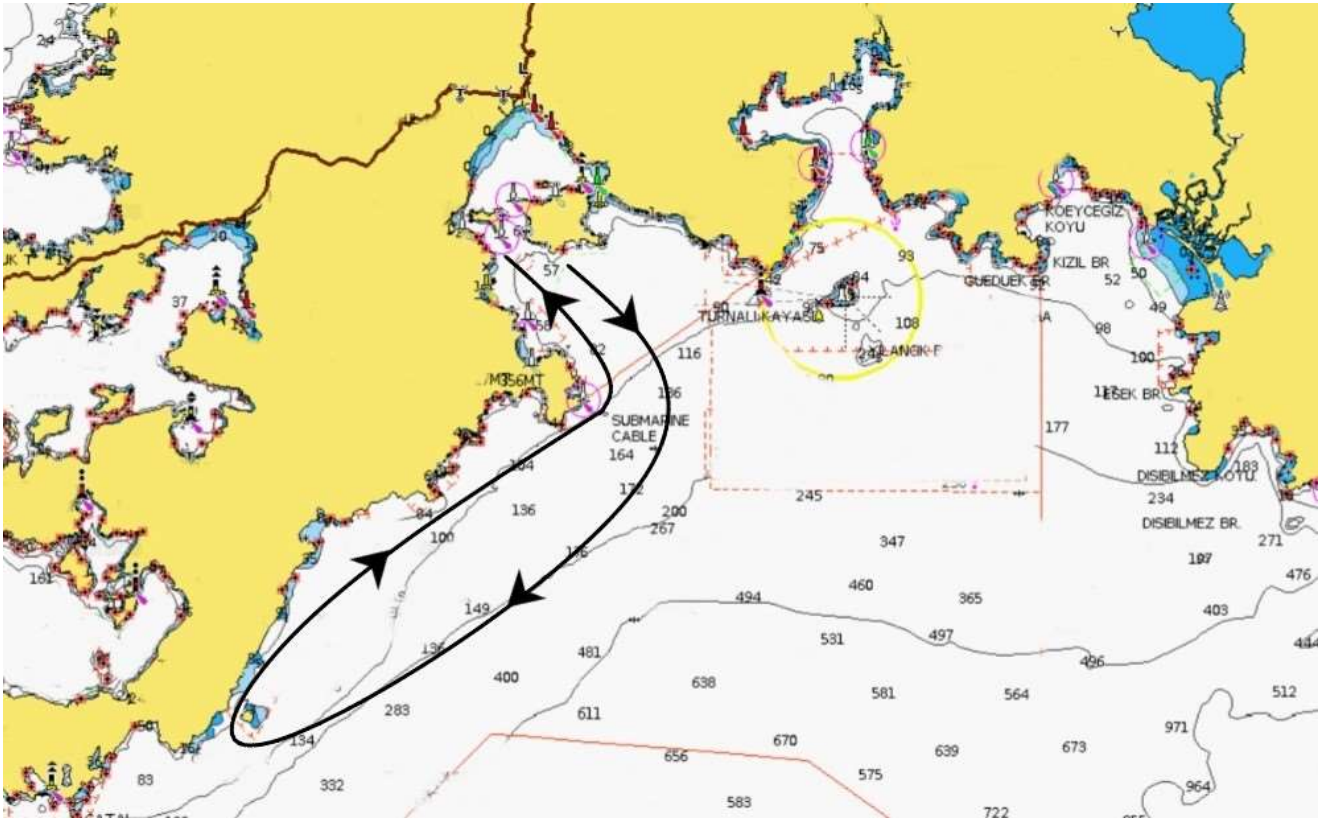
START (RC VESSEL)	:	36°47.279N / 28°17.130E
Mark#1	:	36°44.943N / 28°27.110E
Karga Taşı	:	36°45.837N / 28°16.417E
FINISHING RC VESSEL	:	36°47.570N / 28°15.400E





## Coastal Course - C ROUNDING ORDER

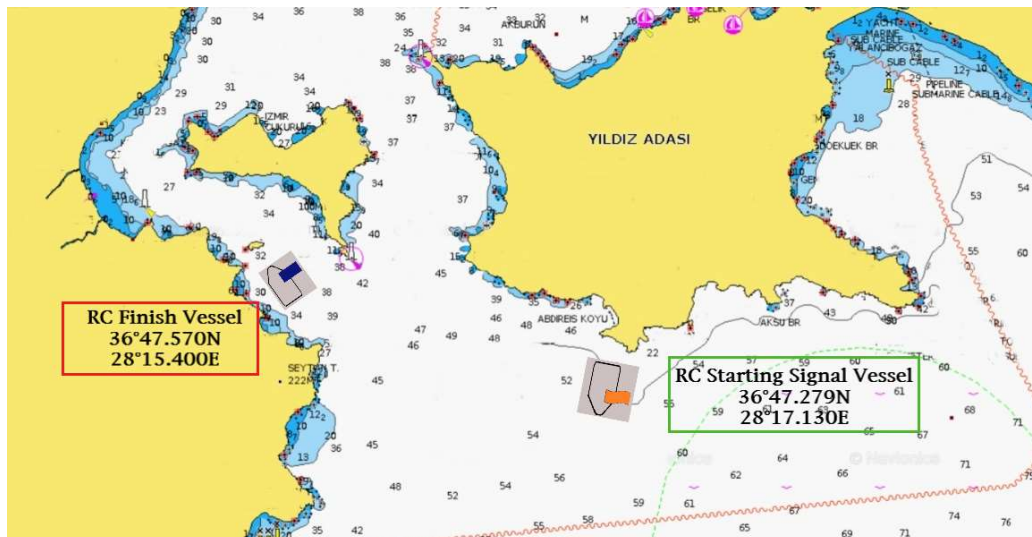
START - KIZILADA (leave to Starboard) - FINISH



START (RC VESSEL) : 36°47.279N / 28°17.130E

KIZILADA : 36°36.000N / 28°07.685E

FINISHING RC VESSEL : 36°47.570N / 28°15.400E

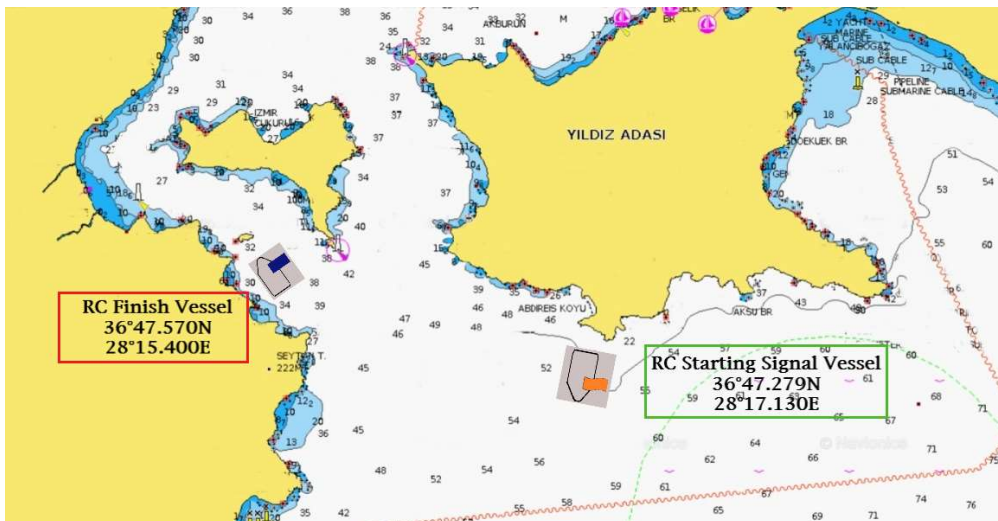
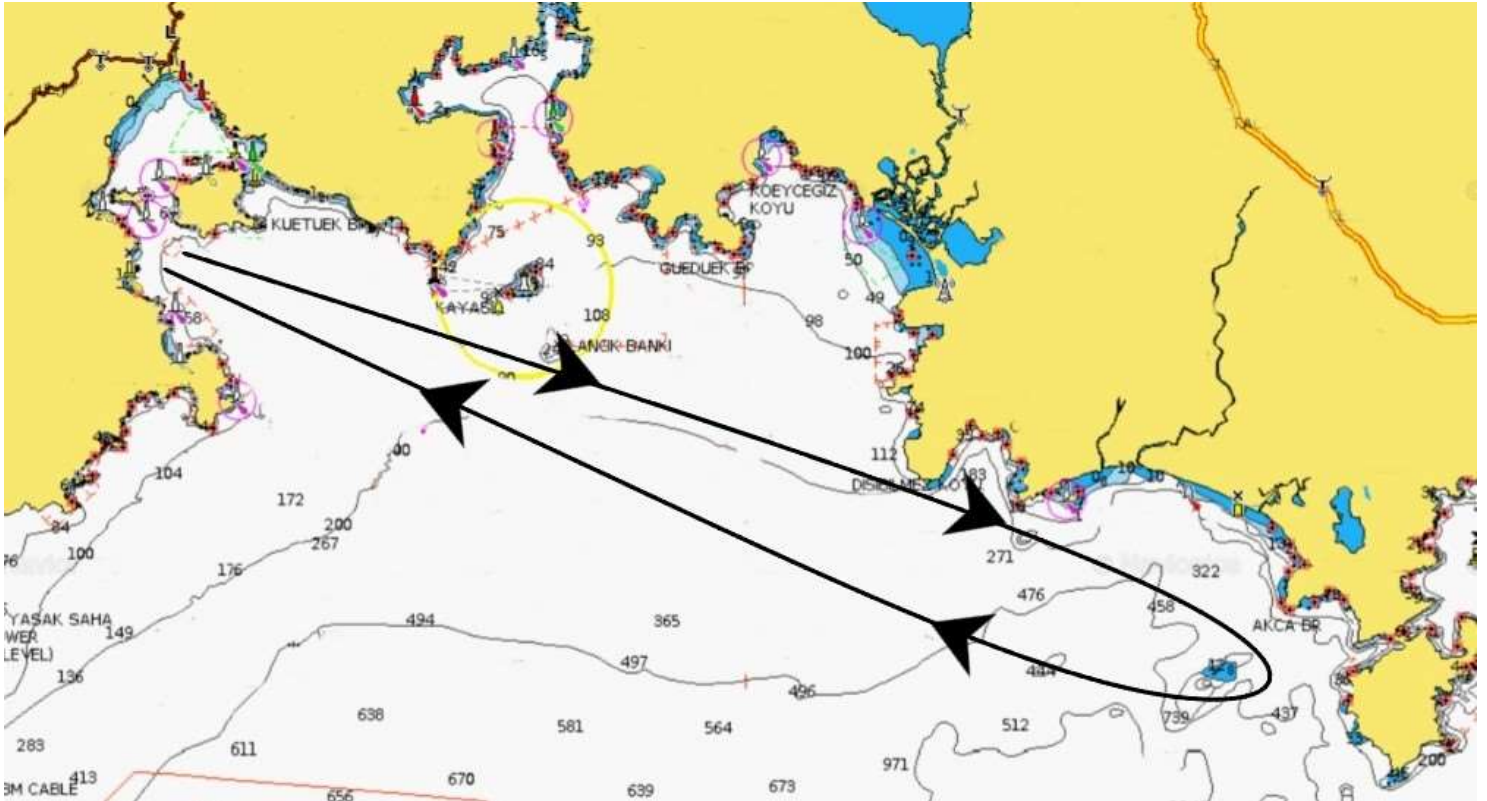


## Coastal Course-D

### ROUNDING ORDER

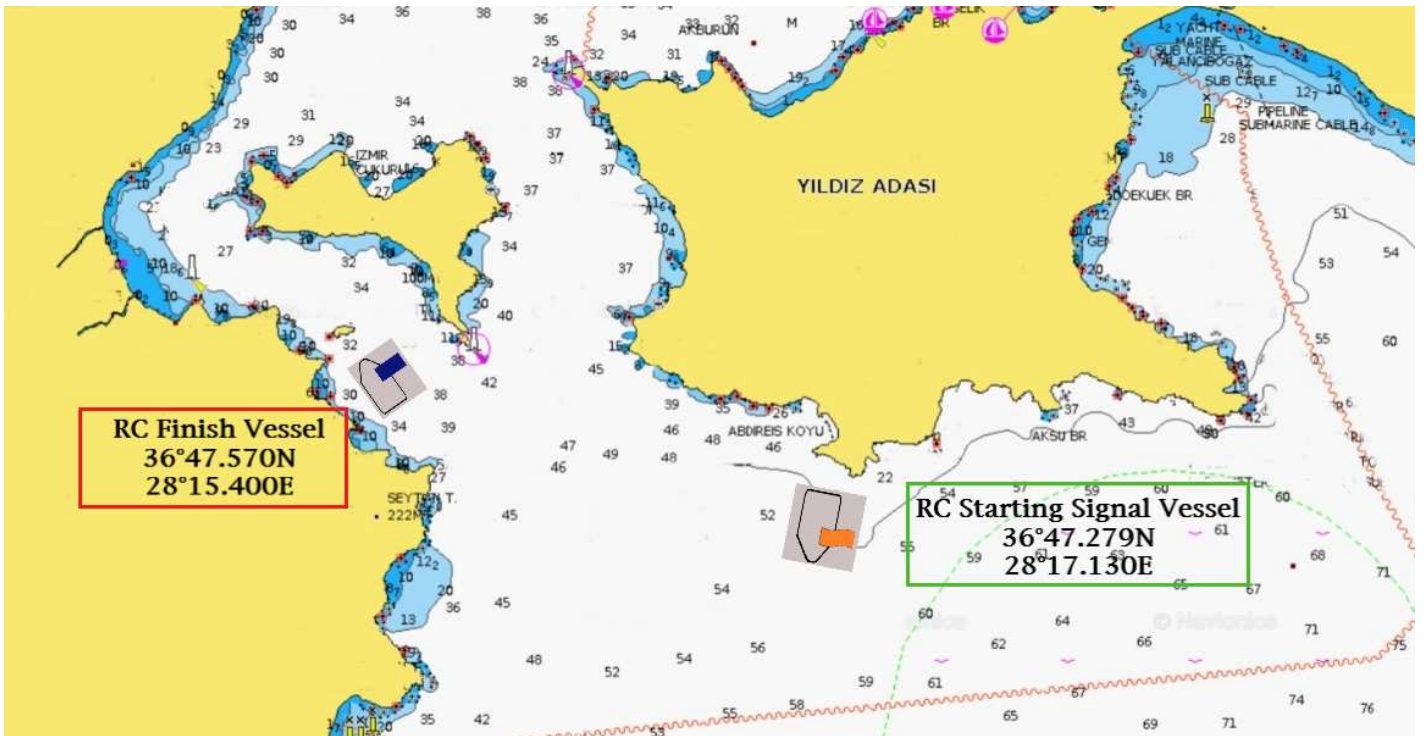


START - Turnalı Kayası/Yılcık Adası (leave to Port) - NAR Adası (to Starboard) - Turnalı Kayası/Yılcık Adası (leave to Starboard) - FINISH

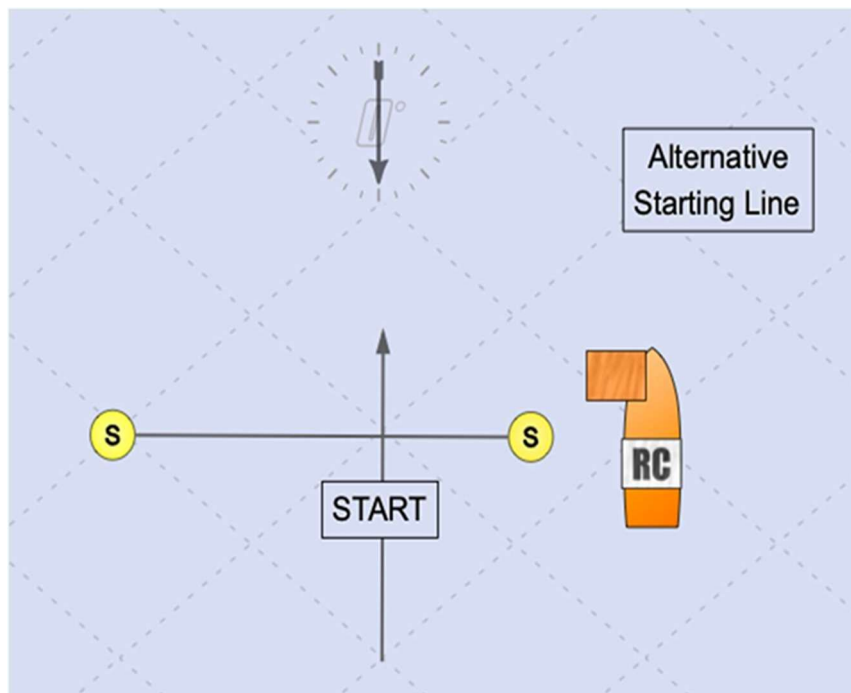


M I R W  
MARMARIS INTERNATIONAL RACE WEEK

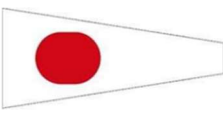
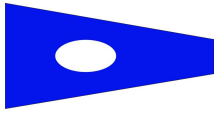
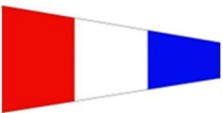
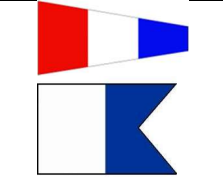

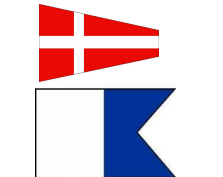

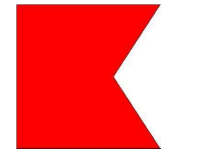


COASTAL RACE'S START / FINISH AREAS



ALTERNATIVE STARTING LINE FOR ALL RACES



## DISTANCE & RACE TIME LIMITS

RACE COURSE	CODE	CLASS	DISTANCE NM	TIME LIMIT	
1		INSHORE	IRC	6	90min
			IRC CHR	6	90min
2		INSHORE	IRC	7,5	120min
			IRC CHR	7,5	120min
3		INSHORE	IRC	10	180min
			IRC CHR	10	180min
3A		INSHORE	IRC	10	180min
			IRC CHR	10	180min
4		INSHORE	IRC	10	180min
			IRC CHR	10	180min
4A		INSHORE	IRC	10	180min
			IRC CHR	10	180min
A		COASTAL	IRC	20	12hrs
			IRC CHR	20	12hrs
			CAT	20	12hrs
B		COASTAL	IRC	20	12hrs
			IRC CHR	20	12hrs
			CAT	20	12hrs
C		COASTAL	IRC	35	15hrs
			IRC CHR	35	15hrs
			CAT	35	15hrs
D		COASTAL	IRC	50	18hrs
			IRC CHR	50	18hrs
			CAT	50	18hrs

## 34th Marmaris International Race Week

### Links to Public Information

---

Regatta officials are using a web-based program to assist with the management of this regatta. It provides electronic forms for such actions as scoring inquiries, protests, equipment substitutions, etc. And it provides for electronic communication with competitors if competitors have provided an email and/or telephone number accepting SMS. Competitors will be notified electronically of protest time limits, confirmation of a protest filing, scheduled hearing times, etc. This electronic system allows competitors to move freely about the event and remain in contact with relevant officials. And all competitors have electronic access to the scoring inquiries, jury decisions, etc.\*

**Notice: The Official Notice Board (ONB) is still the only official source of information for this regatta.**



Submit Request for Hearing



Submit Scoring Inquiry

**NOTICE:** When submitting a protest, request or report, the procedure (as set forth in the Racing Rules of Sailing and the Sailing Instructions) remains unchanged.



Online Notice Board



Hearing Schedule



Hearing Decisions



Scoring Inquiries

---

The jury and parties reserve the right to limit public access to certain decisions.\*

