



## SSF ILCA 4, ILCA 6 & iQFOiL Selection Trials

24 & 25 September 2022  
NATIONAL SAILING CENTER, SINGAPORE

### Combined NOTICE of RACE & SAILING INSTRUCTIONS (NoR/SI)

The Organising Authority (OA) is the Singapore Sailing Federation (SSF).

The online notice board will be at:

<https://www.racingrulesofsailing.org/documents/4807/event?name=ssf-ilca-iqfoil-selection-trials>

#### 1 RULES

1.1 The event will be governed by the rules as defined in *The Racing Rules of Sailing (RRS)*. Other documents under RRS Definition: Rule (g) includes:

1.1.1 [DP] The Maritime and Port Authority of Singapore (MPA) Regulations wherever they might apply.

1.2 National authority prescriptions will apply. For RRS 40 Personal Floatation Devices, add on after the rule the following: "Singapore Sailing Federation prescribes that every boat shall carry life-saving equipment conforming to government regulations that apply in the racing area."

1.3 In all rules governing this event, the notations:

1.3.1 [DP] denotes a rule for which the penalty is applied according to the RRS Introduction – Notation.

1.3.2 [SP] denotes a rule for which a standard penalty may be applied by the Race Committee without a hearing or a discretionary penalty applied by the Protest Committee with a hearing. This changes RRS 63.1 and A5.

1.3.3 [NP] denotes a rule that shall not be grounds for protests by a boat. This changes RRS 60.1(a).

1.4 [DP] The penalty for a breach of the class rules may, at the discretion of the Protest Committee, be less than a disqualification.

1.5 [NP] The infringement of RRS Appendix G, IDENTIFICATION ON SAILS, shall not be grounds for protests by a boat.

1.6 RRS Appendix G3, CHARTERED OR LOANED BOATS, will apply.

1.7 A boat shall neither make nor receive radio, telephone or other electromagnetic transmissions or communications while racing, except in an emergency or when using equipment provided by the Race Committee or Organising Authority (this restriction includes mobile telephones).

1.8 If there is a conflict between languages the English text will take precedence.

#### 2 [DP][NP] EVENT ADVERTISING

2.1 Competitor advertising will be restricted to World Sailing Regulation 20, Advertising Code.

2.2 Boats may be required to display advertising chosen and supplied by the Organising Authority. If this rule is broken, World Sailing Regulation 20.9.2 applies.

### **3 ELIGIBILITY AND ENTRY**

3.1 The event is opened to all boats of the following classes or fleets:

| <i>Event</i>        | <i>Class</i> |
|---------------------|--------------|
| Dinghy              | ILCA 4       |
| Dinghy              | ILCA 6       |
| Men's Windfoiling   | iQFOiL       |
| Women's Windfoiling | iQFOiL       |

3.2 Eligible boats may enter by completing the electronic online form via the link below.  
<https://singaporesailing.eventsmart.com/events/ssf-ilca-iqfoil-selection-trials/>

3.3 Entry fees will be \$40 (excluding GST).

### **4 [DP][NP] INSURANCE**

4.1 Each participating boat shall be insured with an adequate and valid third-party liability coverage.

4.2 The Organising Authority is not responsible for verifying the status or validity of certificates.

### **5 DISCLAIMER OF LIABILITY**

Competitors participate in the event entirely at their own risk. See RRS 3, Decision to Race. The Organising Authority, or any other race officials and volunteers, will not accept any liability for material damage or personal injury or death sustained in conjunction with or prior to, during, or after the event.

### **6 [DP][NP] MEDIA RIGHTS, CAMERAS AND ELECTRONIC EQUIPMENT**

6.1 By participating in this event, competitors and their support persons automatically grant to the Organising Authority and any event sponsors, the right in perpetuity to make, use, and show, from time to time at their discretion, any motion pictures and live, taped or filmed television and other reproductions of them during the period of the event without compensation.

6.2 Boats may be required to carry cameras, sound equipment or positioning equipment as specified by the Organising Authority. Information from such equipment shall not be used by a boat as evidence in a hearing. This changes RRS 63.6.

6.3 The equipment provided, once placed on the boat as instructed by the Organising Authority, shall not be manipulated by the competitor or the support person in any way, except when so required by the Organising Authority.

6.4 Competitors and their support persons may be required for media interviews during the period of the event.

### **7 [DP][NP] CODE OF CONDUCT**

7.1 Competitors and support persons shall comply with any reasonable request from an event official.

7.2 Boats not racing shall avoid the area where boats are racing and any race official vessels.

### **8 [DP][NP] SAFETY REGULATIONS**

8.1 RRS 40.1 shall apply at all times while afloat.

8.2 A boat that retires from a race shall notify the Race Committee as soon as possible before leaving the Course Area.

8.3 When flags AP over H or N over H are displayed from a Race Committee vessel in their respective Course Area, all boats in that Course Area shall immediately return ashore and wait there for further information. This changes race signals AP over H and N over H.

## 9 COMMUNICATIONS WITH COMPETITORS

9.1 Notices to competitors will be posted on the Official Notice Board (ONB) located at <https://www.racingrulesofsailing.org/documents/4807/event?name=ssf-ilca-iqfoil-selection-trials>

9.2 Any change to the sailing instructions will be posted at least 30 minutes before the displaying of flag D on the day it will take effect, except that any change to the schedule of races will be posted no later than 2100h on the day before it will take effect.

9.3 Signals made ashore will be displayed at the flagstaff located in the boatyard of the National Sailing Center.

9.4 [SP][NP] Flag D displayed means: “The warning signal will not be made before the scheduled time or less than 30 minutes after flag D is displayed, whichever is later. Boats shall not launch until this signal is made.”

9.5 Flag AP will not be used and only flag D will be used to control the launching.

## 10 [NP] FORMAT

10.1 The event will consist of a single series.

## 11 SCHEDULE

11.1 The schedule of activities will be as follows:

| <i>Date</i> | <i>Time</i> | <i>Activity</i>               | <i>Location</i> |
|-------------|-------------|-------------------------------|-----------------|
| 24 Sep 2022 | 1200h       | First possible warning signal | Racing Area     |
| 25 Sep 2022 | 1200h       | First possible warning signal | Racing Area     |

11.2 Number of Races:

| <i>Class/Fleet</i> | <i>Total number of races</i> | <i>Max races per day</i> |
|--------------------|------------------------------|--------------------------|
| ILCA 4             | 7                            | 4                        |
| ILCA 6             | 7                            | 4                        |
| iQFOiL Men & Women | 12                           | 6                        |

11.3 On the last scheduled day of racing for each series, no warning signal will be made after 1700h.

## 12 CLASS/FLEET FLAGS

12.1 Class or fleet flags will be as follows:

| <i>Class/Fleet</i> | <i>Description</i> | <i>Background Colour</i> |
|--------------------|--------------------|--------------------------|
| LCA 4              | ILCA Insignia      | Green                    |
| ILCA 6             | ILCA Insignia      | Yellow                   |
| iQFOiL Men         | Code Flag ‘E’      | -                        |
| iQFOiL Women       | Code Flag ‘K’      | -                        |

### 13 EVENT VENUE AND COURSE AREA ASSIGNMENTS

- 13.1 The event will be hosted at National Sailing Center, which is located at 1500 East Coast Parkway, Singapore 468963
- 13.2 NoR/SI Addendum A shows the location of the race area.

### 14 THE COURSES AND MARKS

- 14.1 The diagram in NoR/SI Addendum B show the course, the course designations, the approximate angles between legs, the order in which marks are to be passed, and the side on which each mark is to be left.
- 14.2 No later than the warning signal, the Race Committee starting vessel will display a board designating the course to be sailed.
- 14.3 To change the next leg of the course, the Race Committee will (a) lay a new mark, (b) move the finishing line, or (c) move the leeward gate. When a new mark is laid, the original mark will be removed as soon as possible. When in a subsequent change a new mark is replaced, it will be replaced by an original mark.
- 14.4 Marks will be as follows:

| <i>Mark 1, 2</i>    | <i>Mark 3s / 3p &amp; 4s / 4p / Slalom</i> | <i>New Mark</i>      | <i>Starting Marks</i>   | <i>Finishing Marks</i>  |
|---------------------|--|----------------------|---|---|
| Yellow conical buoy | Yellow cylindrical buoy                    | White Spherical Buoy | Red Oval Buoy & Race Committee vessel displaying an orange flag | Blue Oval Buoy & Race Committee vessel displaying a blue flag |

- 14.5 In the event that a gate mark is missing and has not been replaced with an object displaying flag M, the remaining mark shall be rounded to port.

### 15 THE START

- 15.1 The starting line will be between a staff displaying an orange flag on the Race Committee vessel at the starboard end and the course side of the port-end starting buoy.
- 15.2 [DP] Boats whose warning signal has not been made shall avoid the starting area during the starting sequence for other races and shall stay 50 metres away from boats that are starting or manoeuvring around the starting area to prepare for the start.
- 15.3 A boat that does not start within 4 minutes after her starting signal will be scored Did Not Start (DNS) without a hearing. This changes RRS A5.1 and A5.2.
- 15.4 To alert boats that a race or sequence of races will begin soon, the orange starting line flag will be displayed with one sound at least five minutes before a warning signal is made.
- 15.5 iQFOiL class will be using the following start sequence:

| Minutes before starting signal | Visual Signal       | Sound Signal | Means              |
|--------------------------------|---------------------|--------------|--------------------|
| 3                              | Class Flag          | One          | Warning Signal     |
| 2                              | P, U, Black flag    | One          | Preparatory Signal |
| 1                              | Preparatory removed | One Long     | One Minute         |
| 0                              | Class Flag removed  | One          | Starting Signal    |

## 16 THE FINISH

- 16.1 The finishing line will be between a staff displaying a blue flag on the Race Committee vessel and the course side of the finishing buoy.
- 16.2 [DP] When boats are finishing, boats who have finished racing shall avoid the finishing area, keeping well clear of all boats racing, and shall not act to interfere with a boat that has not finished.

## 17 PENALTY SYSTEM

- 17.1 RRS Appendix P will apply.
- 17.2 RRS P2.3 does not apply and RRS P2.2 is changed so that it will apply to any penalty after the first one.
- 17.3 Penalties for breaches of rules marked [SP] will be 10% of the score for Did Not Finish (DNF) for each infringement, rounded to the nearest whole number (0.5 rounded upward). The scores of other boats shall not be changed; therefore, two boats may receive the same score. However, the penalty shall not cause the boat's score to be worse than the score for DNF. The Race Committee may protest a boat when they consider the standard penalty to be inappropriate. A boat that has been penalised with a standard penalty can neither be protested for the same incident by another boat nor can another boat request redress for this Race Committee action. This changes RRS 60.1, 63.1 and A5.

## 18 TIME LIMITS AND TARGET TIMES

- 18.1 The Mark 1 Time Limit, Race Time Limit (see RRS 35), the Finishing Window and the race target times, in minutes, are as follows:

| <i>Class</i>              | <i>Race time limit</i> | <i>Mark 1 time limit</i> | <i>Finishing window</i> | <i>Target time</i> |
|---------------------------|------------------------|--------------------------|-------------------------|--------------------|
| ILCA 4                    | 60                     | 20                       | 15                      | 40                 |
| ILCA 6                    | 60                     | 20                       | 15                      | 40                 |
| iQFOiL –<br>Course racing | 25                     | 10                       | 10                      | 15                 |
| iQFOiL –<br>Sprint slalom | 6                      | -                        | 10                      | 3-4                |

- 18.2 If no boat has passed Mark 1 within the Mark 1 time limit the race will be abandoned.
- 18.3 Failure to meet the target time will not be grounds for redress. This changes RRS 62.1(a).
- 18.4 For all classes, boats failing to finish within the finishing window shall be scored Did Not Finish (DNF) without a hearing. This changes RRS 35, A5.1 and A5.2.

## 19 SCORING

- 19.1 Four (4) races are required to be completed to constitute a series.
- 19.2 When fewer than four races have been completed, a boat's series score will be the total of her race scores. When four or more races have been completed, a boat's series score will be the total of her race scores excluding her worst score.
- 19.3 To request correction of an alleged error in posted race or series results, a boat may submit a scoring enquiry form available via the online notice board by clicking on the blue "+" and then " *Scoring Enquiry* ".

## 20 HEARING REQUESTS

- 20.1 Add to RRS 61.1(a), “To inform the Race Committee of the boat(s) being protested, the boat intending to protest shall approach the Race Committee vessel at the finishing line as soon as practicable after finishing or retiring, and shall hail the protested boat(s) sail number(s).
- 20.2 Hearing request forms are available at the online notice board by clicking on the blue "+" and then "*File a Hearing Request*". Protests and requests for redress or reopening shall be submitted online, within the appropriate time limit. If a protest or request is not received by the system and so does not display on the pending hearing list, then it has not been delivered. This changes RRS 61.3 and 63.1.
- 20.3 For each class or fleet, the protest time limit is 60 minutes after the last boat has finished the last race of the day, or the Race Committee signals no more racing today, whichever is later.
- 20.4 Notices will be posted no later than 30 minutes after the protest time limit to inform competitors of hearings in which they are parties or named as witnesses. Hearings will be held in the conference room located on the second floor of the National Sailing Center, beginning at the time posted.
- 20.5 Notices of protests by the Race Committee, Technical Committee or Protest Committee will be posted to inform boats under RRS 61.1(b).
- 20.6 A list of boats that have been penalised under Appendix P for breaking RRS 42 will be posted.

## 21 [DP][NP] REPLACEMENT OF CREW OR EQUIPMENT

- 21.1 Substitution of competitors will not be allowed.
- 21.2 Substitution of damaged or lost equipment will not be allowed unless approved in writing by the Race Committee. Requests for substitution shall be made to the Race Committee at the first reasonable opportunity by submitting a question to the Race Committee online via the event website.
- 21.3 Repairs or replacements may be made on the water before or between races provided that the Race Committee afloat is notified, and approval granted by the committee before the next race. After the end of the day’s racing, the substitution is still subject to the approval of the Race Committee given retrospectively.

## 22 [DP][NP] EQUIPMENT AND MEASUREMENT CHECKS

- 22.1 A boat or equipment may be inspected at any time for compliance with the class rules, notice of race and sailing instructions.
- 22.2 When instructed by a race official on the water, a boat shall proceed to a designated area for inspection.

## 23 OFFICIAL & SUPPORT VESSELS

- 23.1 Official vessels will be identified as follows:

| <i>Vessel</i> | <i>Identification</i>            |
|---------------|----------------------------------|
| Jury/Umpires  | White flag with black letter “J” |

- 23.2 Actions by official vessels, drones or helicopters shall not be grounds for requesting redress by a boat. This changes RRS 60.1(b).

## 24 TRASH DISPOSAL

Trash may be placed aboard official or support person vessels. The use of ‘single-use’ plastic bottles or containers on shore or afloat is strongly discouraged.

## **25 LIABILITY**

- 25.1 Singapore Sailing Federation, owners, affiliates, officers, employees, agents, committee persons and race officials acting in the official capacities do not accept liability for loss of life or property damage, or personal injury or damage caused by or arising out of the event. Competitors take part in the event at their own risk.
- 25.2 The establishment of the Notice of Race and Sailing Instructions in no way limits or reduces the complete and unlimited responsibilities of a competitor being solely and entirely responsible for the management of a boat he is sailing.
- 25.3 All competitors shall maintain their boats in a safe and seaworthy condition.
- 25.4 A competitor shall be of good health and a competent sailor capable of racing in open water in all conditions including strong winds.
- 25.5 At-fault occurrences to other boats are the responsibility of the helmsman. Competitors are not covered by any liability insurance provided by the organising authority and should provide their own coverage for personal goods and liability protection. The organising authority recommends that competitors consult their own insurance carriers to assure they are covered at this event and regarding additional personal liability insurance coverage.
- 25.6 A competitor is recommended to have personal accident and health insurance that covers him while attending the regatta and while racing.

## **26 INDEMNIFICATION**

To the fullest extent permitted by law, each competitor agrees to indemnify and hold Singapore Sailing Federation, owners, affiliates, officers, employees, agents, committee persons and race officials acting in the official capacities, harmless from any third party claim to the extent arising from a competitor's acts or omissions.

## **27 FURTHER INFORMATION**

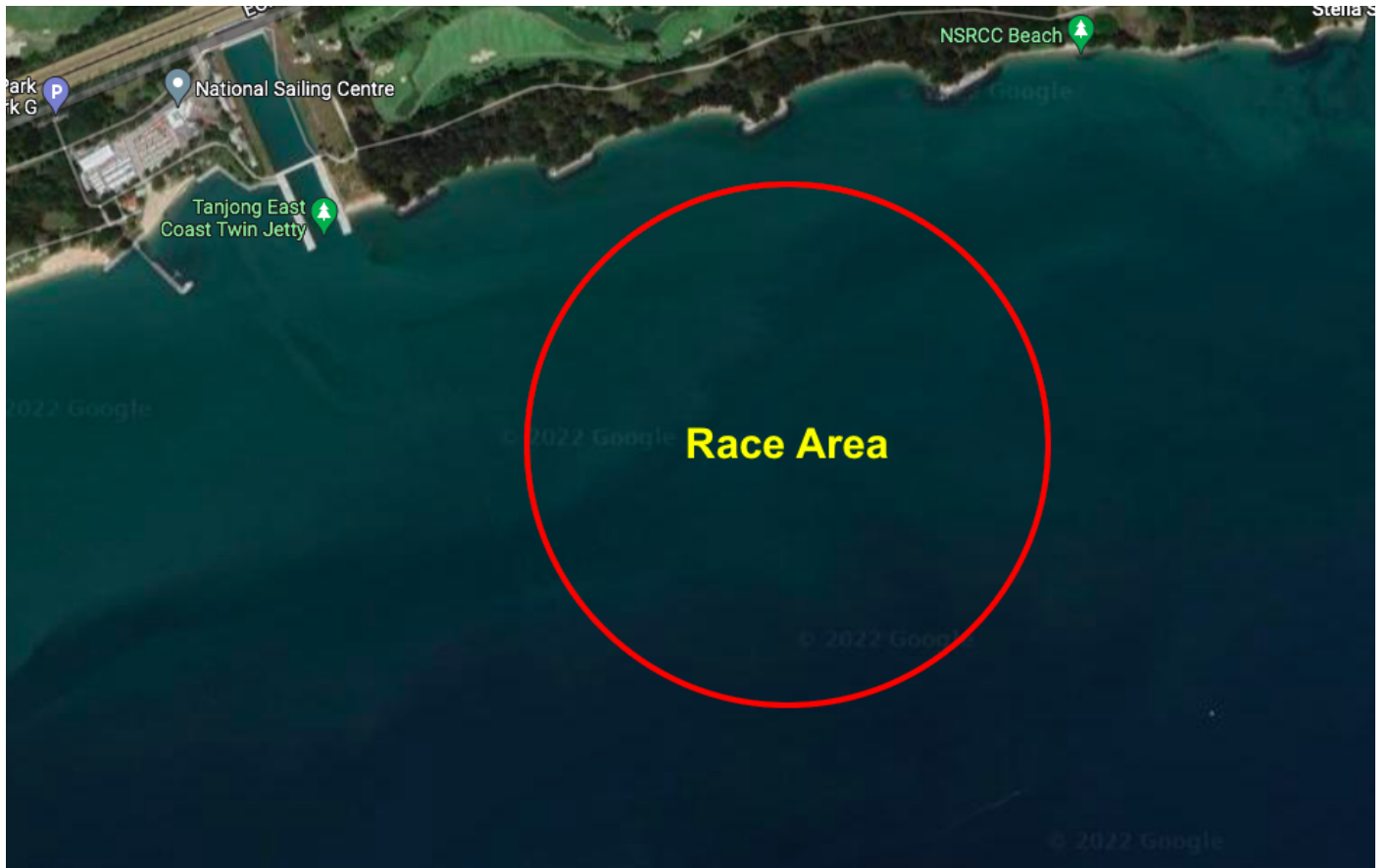
Please contact the Singapore Sailing Federation (SSF) for any questions regarding this event via the following means:

Tel: 6444 4555

Email: [performance@singaporesailing.org.sg](mailto:performance@singaporesailing.org.sg)

Website: <https://www.sailing.org.sg>

## Addendum A – Race Area





# Addendum B – Course

**O**

| Signal | Mark Rounding Order                                 |
|--------|---|
| O 2    | Start - 1 - 2 - 3s/3p - 2 - 3p - Finish             |
| O 3    | Start - 1 - 2 - 3s/3p - 2 - 3s/3p - 2 - 3p - Finish |

**L**

| Signal | Mark Rounding Order                        |
|--------|--|
| L2     | Start - 1 - 4s/4p - 1 - Finish             |
| L3     | Start - 1 - 4s/4p - 1 - 4s/4p - 1 - Finish |

**S**

| Signal | Mark Rounding Order        |
|--------|----------------------------|
| S      | Start - 1 - 2 - 3 - Finish |