



SAILING INSTRUCTIONS

ORGANIZATION

The Portuguese Sailing Federation and Clube Naval de Cascais establishes this Sailing Instructions for the **Cascais Vela 2021** open to **ORC, NHC and SB20** class boats, that will be raced from 27th to 29th of August, in Cascais racing area.

1. RULES

- 1.1. The regatta will be governed by the *rules* as defined in The Racing Rules of Sailing.
- 1.2. For **ORC class** ORC Rating System 2021 will apply; For **Classes ORC and NHC World Sailing Offshore Special Regulations Appendix B – Category 5** will apply.
- 1.3. When in conflict, the Sailing Instructions prevail over the Notice of Race (changes RRS 63.7)
- 1.4. SB20 Class rule C.5.1(7) do not apply.
- 1.5. If there is a conflict between languages the Portuguese text will take precedence.

2. IDENTIFICAÇÃO ADICIONAL E PUBLICIDADE

- 2.1. As by WS regulation 20 boats shall display advertising chosen and supplied by the AO.
- 2.2. All **ORC and NHC class** boats, while racing, shall display their class flag, hoisted in the backstay, 1.5 meters above the deck. In case there is no backstay the class flag shall be hoisted in the stern lifeline.
(Classes ORC – ICS “O” flag; Class NHC – ICS “T” ICS)

3. NOTICES TO COMPETITORS

- 3.1. Notices to competitors will be posted on the online notice board:
<https://www.racingrulesofsailing.org/documents/2549/event>

4. CHANGES TO SAILING INSTRUCTIONS

- 4.1. Any change to the sailing instructions will be posted at least two hours before the 1st scheduled warning signal for the first race of the day on the day it will take effect.
- 4.2. Any change to the schedule of races will be posted before the end of the latest class protest time limit, of the day before it will take effect.

5. SIGNALS MADE ASHORE

- 5.1. Signals made ashore will be displayed at the official flag pole located at the CNC South pier, by the club reception.
- 5.2. When flag AP is displayed ashore, ‘1 minute’ is replaced with ‘not less than 60 minutes’ in the race signal AP. Changes RRS Race Signals.

6. SCHEDULE OF RACES

Date	Hour	Class	Event
August 27th	13:00	ORC	Warning signal 1st race of the day
August 27th	13:00	SB20	Warning signal 1st race of the day
August 28th	TBA	ORC	Warning signal for coastal race
August 28th	13:10	NHC	Warning signal for coastal race
August 28th	TBA	SB20	Warning signal 1st race of the day
August 29th	TBA	NHC	Warning signal for coastal race
August 29th	TBA	ORC	Warning signal 1st race of the day

6.1. When, in the same day, more than one race (or sequence or races) will be sailed, the following warning signal will be made as soon as practicable. To alert boats that a race or sequence of races will begin soon, the Race Committee will display an orange flag for at least 5 minutes for at least before a warning signal is displayed.

6.2. No more than 4 races per day will be sailed for the **SB20 class**, 3 for the **ORC class** and 2 for the **NHC class**.

6.3. O The schedule are 6 Windward/Leeward races to **SB20 class**, 6 Windward/Leeward races plus 1 coastal race to **ORC class** and 2 coastal races to **NHC class**.

6.4. On the last day of the regatta no warning signal will be made after 16:00.

7. CLASS FLAGS

Class flags are:

Class/Group	Flag
ORC	ICS "O"
NHC	ICS "T"
SB20	White with class logo

8. RACING AREAS

8.1. Attachment A shows the location of racing areas.

8.2. Racing areas are defined as follows:

8.2.1. Before the preparatory signal – 100 meters from the starting line;

8.2.2. After the preparatory signal – no less than 100 meters of an imaginary line leeward from the starting line.

8.2.3. After the starting signal – no less than 100 meters of an imaginary line defined by the furthest place where a racing boat can be.

9. THE COURSES

9.1. The diagrams in Attachment **B1, B2, B3, B4, B5 e B6** show the courses, including the order in which marks are to be passed, and the side on which each mark is to be left.

9.2. No later than the warning signal, the race committee signal boat may display the course to be sailed and the approximate compass bearing and length of the first leg

9.3. At any time, the gate marks can be substituted by a single mark, which shall be rounded by the same side as all the other course marks.

9.4. Windward/Leeward courses can be shortened, from the time when boats have completed 3 legs. This Changes RRS 32.

9.5. Whichever the course is to be sailed, cardinal yellow marks from the marina breakwater must be passed by south.

10. MARKS

10.1. Windward/Leeward races (ORC, SB20 Classes)

Marks	ORC class	SB20 Class
Start	Conical Red	PIN boat
Course	Cylindrical Orange	Conical Red
Finish	Dan buoy with Orange flag	PIN boat or Dan buoy with Orange flag
Mew Mark	Conical yellow	Conical yellow

10.2. Coastal Races (ORC, NHC Classes)

Marks	ORC, NHC Classes
Start	Conical Red
Course	Inflatable marks will be Cylindrical Orange. Other marks will be fixed signal marks located in Cascais and Lisbon area – approximate GPS positions of the fixed marks are on att. B3, B4 and B5
Finish	Dan buoy with Orange flag

10.3. The Race Committee can replace a start or finish mark by an identified Race Committee boat with a mast displaying an orange flag.

10.4. A race committee boat signalling a change of a leg of the course is a mark as provided in SI 12.3.

11. START

11.1. The starting line will be set between a race committee signal boat displaying an orange flag and the start mark.

11.2. All boats which the warning signal was not displayed will clear the starting area and any boat which the preparatory signal has been displayed.

11.3. A boat starting later than 4 minutes after her starting signal will be scored Did Not Start.

11.4. When there is a next race on the same day, identification of the boats scored OCS, UFD or BFD of the previous race will be posted on a board at the race committee boat. Failing to do so will not be grounds for a redress.

12. CHANGE OF THE NEXT LEG OF THE COURSE

12.1. To change the next leg of the course, the race committee will lay a new mark (or move the gate or move the finishing line) and remove the original mark as soon as practicable. When in a subsequent change a new mark is replaced, it will be replaced by an original mark.

12.2. When a change of course is made for the windward marks, mark 1s is removed. Altera a RRV 33.



12.3. Except at a gate, boats shall pass between the race committee boat signalling the change of the next leg and the nearby mark, leaving the mark by the same side as all the other course marks and race committee boat to starboard. This changes RRS 28.1.

13. FINISH

13.1. The finish line will be between a mast with an Orange flag at the race committee boat and the finish mark. Changes RRS Race Signals.

13.2. For **ORC and NHC classes**, when crossing the finish line, in low visibility, all boats shall light their sail number with a powerful light and identify themselves to the Race Committee through VHF channel 69

14. PENALTY SYSTEM

14.1. For a breach of *World Sailing Offshore Special Regulations* and class rules, a discretionary penalty will be applied by the protest committee (DPI).

14.2. For a breach of a part 2 rule, RRS 44.1 is changed so that Two-Turns Penalty is replaced by the One-Turn Penalty, including one tack and one gybe.

14.3. A boat that have done a penalty in accordance to RRS 44.1, or that has retired from a race, must sign a declaration form at the race office, within the protest time limit, available at:

https://www.racingrulesofsailing.org/penalty_reports/2549/event

15. TIME LIMITS

15.1. SB20 Class

15.1.1. Each race will have a target time of 50 minutes, for the SB20 class. Different timings will not be grounds for a redress;

15.1.2. The time limit for the first boat to finish is 90 minutes;

15.1.3. Time limit to pass mark number 1 is 30 minutes. If no boat has passed Mark 1 within the Mark 1 time limit the race will be abandoned.

15.1.4. Boats that, having started, fail to finish within 15 minutes after the first boat sails the course and finishes and are not disqualified, do not retire after finish or are not granted redress, will be scored Did Not Finish. Changes rules 35, A4.

15.2. Classes ORC

Time limit for each boat will be according to the following formula: $GPH \times 2 \times Course\ distance$.

As reference, and before the start of the event first race, it will be posted on the official notice board a list with the time limits per boat per mile. Boats that, having started, fail to finish within the time limit and are not disqualified, do not retire after finish or are not granted redress, will be scored Did Not Finish. Changes rules 35, A4.

15.3. Classes NHC

The time limit for finish will be the official sunset hour, which will be posted on the official notice board.

16. PROTESTS AND REQUESTS FOR REDRESS

16.1. A boat intending to protest must inform the race committee finish boat immediately after finishing, informing the sail number of the protested boat and should wait the confirmation of the Race Committee. If the protester does not finish the race he shall inform the Race Committee Boat as soon as possible or the Race Office and immediately after arriving ashore

16.2. Protests and requests for redress shall be made at the official notice board:

https://www.racingrulesofsailing.org/protests/new?event_id=2549



16.3. The protest time limit, for every class, is 60 minutes after the last boat of that class has finished the last race of the day, or after being signal “No more races today” (whichever is later); this time will be posted on the official notice board.

16.4. Protests by the race committee or by the protest committee will be posted on the official notice board, until the end of the protests time limit for each class. Changes RRS 61.1(b).

16.5. Approximately 15 minutes after the protest time limit expires it will be posted on the official notice board the schedule of hearings in which they are parties or named as witnesses. Hearings will be held in the protest committee room.

16.6. Noncompliance with SIs 22.1 e 22.2 may be grounds for protest to the protest committee that will decide the penalties to apply which can be the disqualification of one or more competitors of the sailing team, or out of it. In this case RRS 64.4 will apply.

16.7. Breaks to SIs 2, 11.2, 13.3, 14.3 and 18 will not be grounds for protest by a boat. Changes RRS 60.1(a). Penalties for these breaks and for class rule breaks might be less severe than the disqualification if the protest committee decides.

16.8. Add to RRS 61.3. Protest time limit of boats about handicap certificates will be two hours after the entry lists and certificates are published.

17. SCORING

17.1. 1 race is required to be completed to constitute a series.

17.2. The scoring of a boat in a series will be the sum of their scoring in each completed race, excluding the worst score, except when 4 or less races are completed, in which case the scoring will be the sum of the scoring in every completed race, with exception to the ORC class which will be ruled by SI 17.4.3.

17.3. To request a correction of a race result, competitors must fill a form available at:

https://www.racingrulesofsailing.org/scoring_inquiries/2549/event ;

17.4. ORC Classes

17.4.1. Scoring of Windward/Leeward races will be established according to the *Inshore Triple Number* system. For the coastal race the *Offshore Time on Time Single Number* system will be used.

17.4.2. The length of the course, direction of each leg and direction and wind speed will be decided by the race committee and will not be ground for a request of redress. Changes RRS 60.1(b)

17.4.3. The coastal race will have a 1.5 scoring ponderation and can't be discarded.

17.5. NHC Classes

All boats entering in NHC class will be scored according to [Rules and Guidance](#) of the *National Handicap for Cruisers*; in these classes the handicap for the first race will be calculated by the “NHC Base List”.

17.6. SB20 Classes

The low point system scoring will be used as stated in RRS A4.

18. SAFETY

18.1. During races the responsible of the safety is the race committee chairman and is him who shall report every vessel moving inside or around the race course. To the race committee chairman is given enough authority to manage all safety procedures.

18.2. No non identified vessels can't circulate within the race area defined in this sailing instructions, from the warning signal of the first race of the day until the last boat as finished the last race of the day, except in case of emergency, as specified in the previous SI.

18.3. Boats that do not leave to the racing area shall inform, as soon as possible, the race office, signing the respected document.

19. REPLACEMENT OF CREW OR EQUIPMENT

Substitution of competitors and damaged or lost equipment will not be allowed without approval of the race committee. This requests will be presented to the race committee if the first possible chance, at: https://www.racingrulesofsailing.org/crew_substitutions/2549/event .

20. EQUIPMENT AND MEASUREMENT CHECKS

20.1. A boat or equipment may be inspected at any time for compliance with the class rules and sailing instructions.

20.2. On the water, a boat can be instructed by a race committee measurer to proceed immediately to a designated area for inspection.

21. OFFICIAL BOATS

Official boats will be marked as follows:

Category	Flag
Race Committee	White with black "CR"
Protest Committee	White with "Jury"
Tecnical Committee	White with black "RC"
Safety	White with black "RC"
Press	White with "Press"

22. SUPPORT BOATS

22.1. Team leaders, coaches and other support personnel shall stay outside areas where boats are racing from the time of the preparatory signal for the first class to start until all boats have finished or the race committee signals a postponement, general recall or abandonment.

22.2. All support boats must register at the race office and must display identification from the moment they are afloat until they are back ashore. This identification will be made by exposing, in visible place, the club flag, a white flag with the club name or a national flag (for foreign vessels)

23. ANTI-DOPING CONTROL

Anti-Doping Controls can be made, in accordance to the WADA/WS specifications. Tests will be made in accordance to WS Regulation 21 and the Anti-Doping. Of the Portuguese Sailing Federation.

24. RADIO COMMUNICATION

24.1. A boat racing shall neither make radio transmissions while racing nor receive radio communications, except the ones made by the race committee to all boats. This restriction also applies to mobile telephones.

24.2. To **ORC and NCH Classes** the race committee will use **VHF – Channel 69** to provide information

24.3. To **SB20 Classes** the race committee will use **VHF – Channel 72** to provide information.

24.4. Boats may be required to carry on-board cameras, sound equipment or positioning equipment as specified by the OA.

25. PRIZES

25.1. Prizes will be given to the top three boats of each class (NHC, ORC A, ORC B e SB20).

25.2. The Pedro Mendonça Trophy will be given to the **ORC Class** boat with the shortest correct time on the coastal race.

25.3 Prize will be given to the best scored boat of the NHC class in real time.

26. DISCLAIMER OF LIABILITY

Competitors participate in the regatta entirely at their own risk. See rule 4, Decision to Race. The organizing authority will not accept any liability for material damage or personal injury or death sustained in conjunction with or prior to, during, or after the regatta.

27. INSURANCE

Each participating boat shall be insured with valid third-party liability insurance with a minimum cover of 300.000 € per event or the equivalent.

28. HAUL-OUT RESTRICTIONS

Keelboats shall not be hauled out during the regatta except with and according to the terms of prior written permission of the race committee.

ATTACHMENT A

RACING AREAS



Racing Area	Distance	Bearing	Latitude	Longitude	Flag
A	2,0 Nm	190º	38,40.000 N	009,26.000 W	Code Flag "A"
B	2,0 Nm	140º	38,40.000 N	009,23.500 W	Code Flag "B"



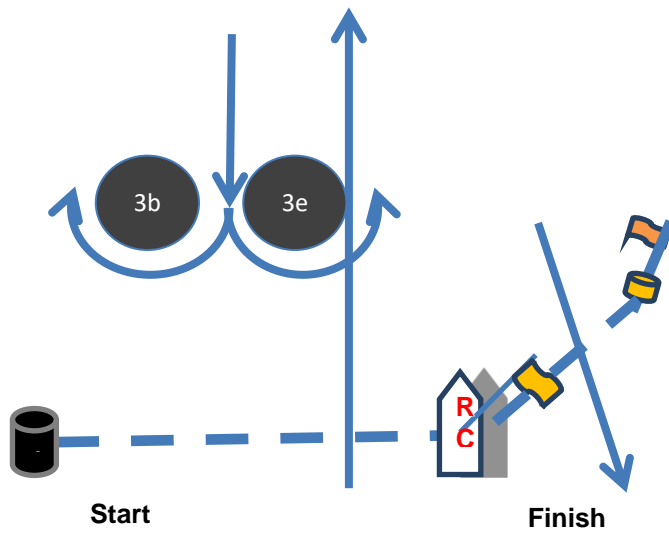
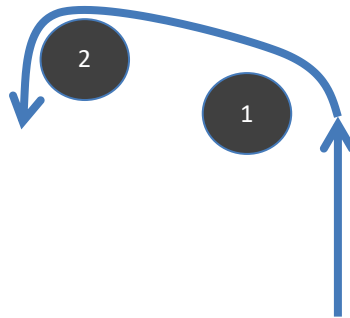
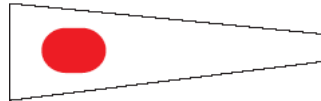
PARCIBO



VISTA ALEGRE



ATTACHMENT B1
COURSE 1 - ORC
Signal: Pennant 1

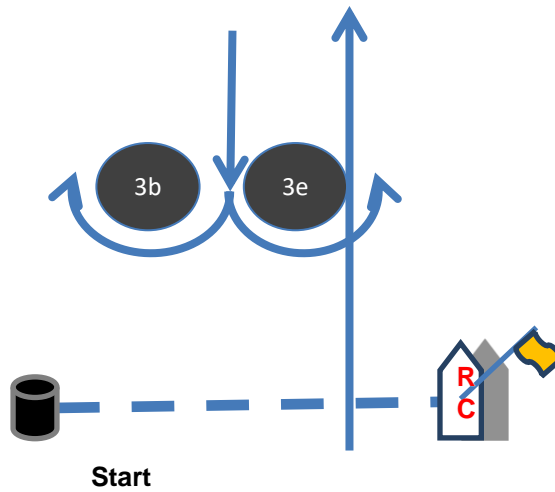
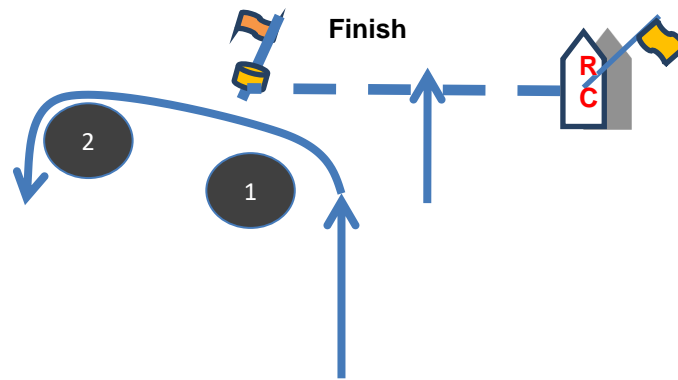


Start – 1 – 2 – 3b/3e – 1 – 2 – 3e – Finish

Rounds by port

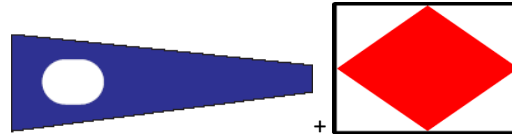
When passing marks 3b/3e (gate) IS 9.3 applies

ATTACHMENT B2
COURSE 2 - ORC
Signal: Pennant 2



Start – 1 – 2 – 3b/3e – 1 – 2 – 3b/3e - Finish
Rounds by port
When passing marks 3b/3e (gate) IS 9.3 applies

ATTACHMENT B2 + F
COURSE 2F (with Finish in Cascais)
 Signal: Pennant 2 + ICS flag "F"

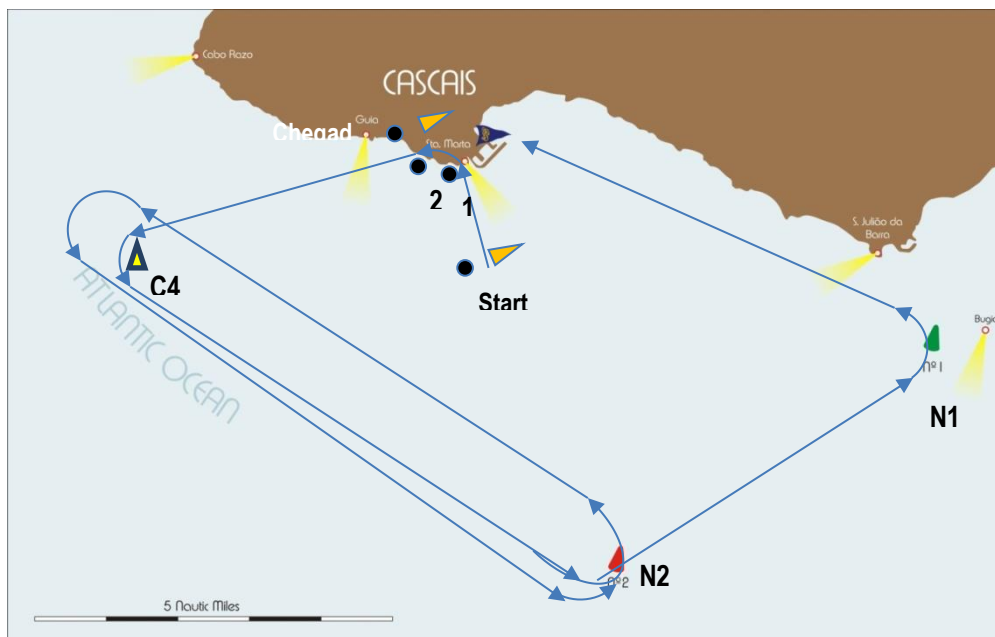
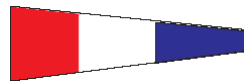


Finish in Cascais:



Start – 1 – 2 – 3b/3e – 1 – 2 – 3b/3e – Finish in Cascais
 Rounds by port
 When passing marks 3b/3e (gate) IS 9.3 applies

ATTACHMENT B3
COURSE 3 – COASTAL RACE 1
Signal: Pennant 3



Note: Not to scale.

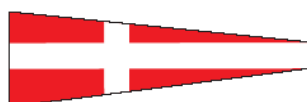
Start - 1 – 2 – C4 – N2 – C4 – N2 – N1 - Finish
Rounds by port

Marks	Shape and colour	Approximate position	
1	Orange inflatable cylindrical	To be announced by the Race Committee	
2	Orange inflatable cylindrical	To be announced by the Race Committee	
C4	Fixed Yellow	38 40.905 N	009 27.490 W
N2	Fixed Red	38 37.300 N	009 23.275 W
N1	Fixed Green	38 39.560 N	009 18.770 W
Finish	Dan buoy with Orange flag	To be announced by the Race Committee	

The Race Committee will inform, via VHF channel 69, before the warning signal, the course to be sailed, informing the position of the marks and order and side in which marks are to be rounded

This information relating marks and their position is not precise. A different course layout and marks position will not be grounds for protest.

ATTACHMENT B4
COURSE 4 – COASTAL RACE 2 – ALTERNATIVE COURSE
Signal: Pennant 4

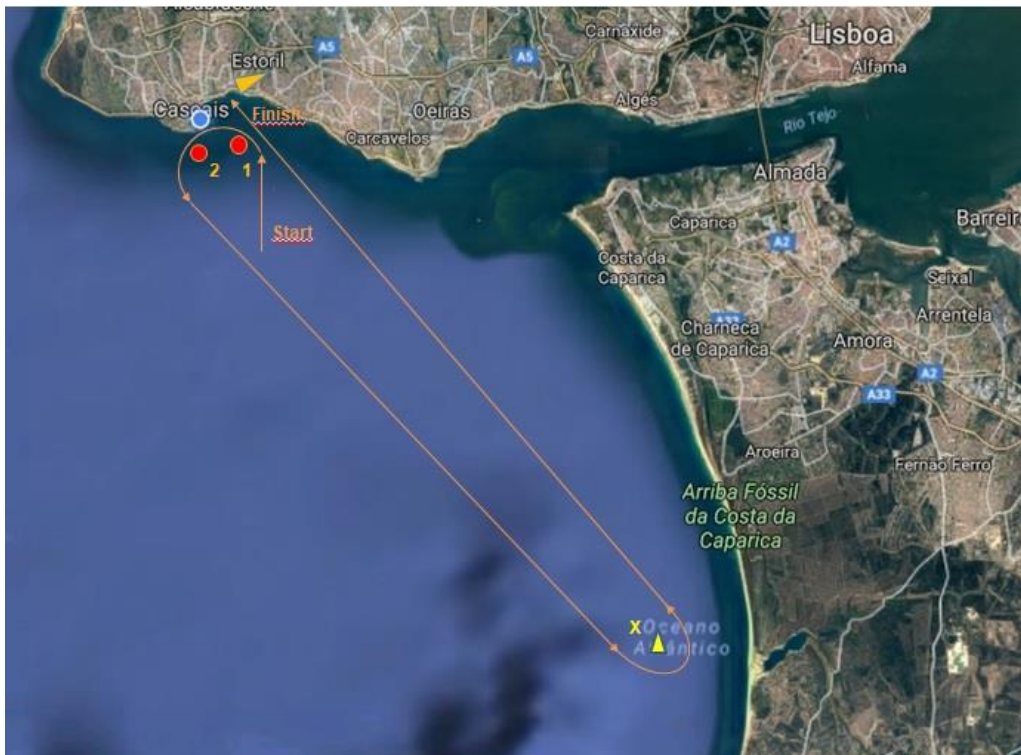
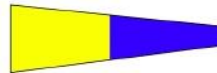


Marks	Shape and colour	Approximate position	
1	Orange inflatable cylindrical	To be announced by the Race Committee	
2	Orange inflatable cylindrical		
3	Orange inflatable cylindrical		
4	Orange inflatable cylindrical		
C4	Fixed Yellow	38 40.905 N	009 27.490 W
C2	Fixed Yellow	38 40.005 N	009 27.970 W
N2	Fixed Red	38 37.303 N	009 23.275 W
N1	Fixed Green	38 39.561 N	009 18.769 W
Finish	Dan buoy with Orange flag	To be announced by the Race Committee	

The Race Committee will inform, via VHF channel 69, before the warning signal, the course to be sailed, informing the position of the marks and order and side in which marks are to be rounded

This information relating marks and their position is not precise. A different course layout and marks position will not be grounds for protest.

ATTACHMENT B5
COURSE 5 – COATAL RACE 3 – ALTERNATIVE RACE
 Signal: Pennant 5



Note: Not to scale.

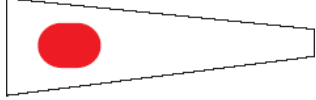
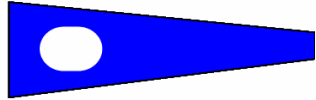
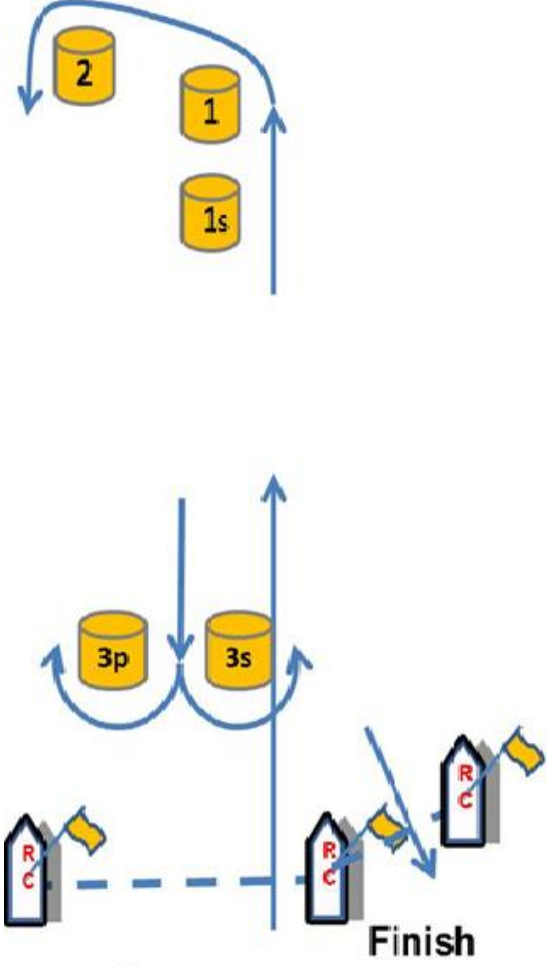
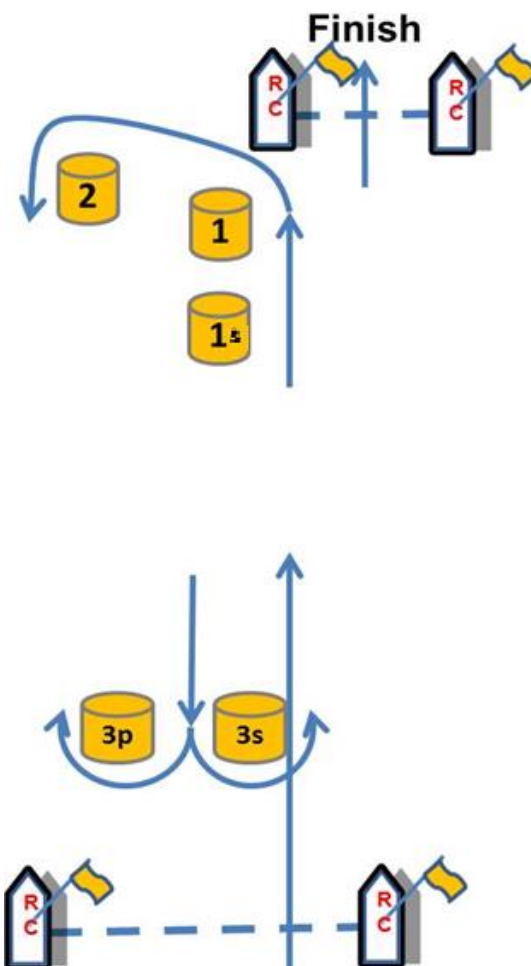
Start – 1 – 2 – X – Finish
Rounds by port

Marks	Shape and colour	Approximate position	
1	Orange inflatable cylindrical	To be announced by the Race Committee	
2	Orange inflatable cylindrical		
X	Fixed Yellow (Meco beach)	38º 29.332 N	009º 12.216 W
Finish	Dan buoy with Orange flag	To be announced by the Race Committee	

The Race Committee will inform, via VHF channel 69, before the warning signal, the course to be sailed, informing the position of the marks and order and side in which marks are to be rounded

This information relating marks and their position is not precise. A different course layout and marks position will not be grounds for protest.

ATTACHMENT B6
COURSES TO SB20 CLASS

<p>Course 1 Signal – Pennant 1</p>	<p>Course 2 Signal – Pennant 2</p>
	
	
<p>Start – 1s - 1 - 2 – 3p/3s – 1s - 1 - 2 – 3s - Finish</p>	<p>Start – 1s - 1 - 2 – 3p/3s – 1s - 1 - 2 – 3p/3s - Finish</p>
<ul style="list-style-type: none"> • All marks are to be rounded by port, with exception to marks 3P/3S which is a gate • Distances between marks 1S, 1 and 2 are approximate 0.05 NM • Note: Not to scale. 	