



ENOSHIMA

Olympic Week 2023

SAILING INSTRUCTIONS

The Organizing Authority is Japan Sailing Federation (JSAF).

1. RULES

- 1.1. The regatta will be governed by the rules as defined in The Racing Rules of Sailing (RRS).
- 1.2. RRS Appendix P, Special Procedures for Rule 42, will apply.
- 1.3. International Jury will be appointed in accordance with rule 91(b). Its decisions will be final as provided in RRS 70.5.
- 1.4. In all rules governing this regatta:
 - 1.4.1. [SP] denotes a rule for which a standard penalty may be applied by the race committee without a hearing or a discretionary penalty applied by the International Jury with a hearing. This changes RRS 63.1 and A5.
 - 1.4.2. [NP] denotes a rule that shall not be grounds for protests by a boat. This changes RRS 60.1(a).
- 1.5. For the Skiff Two Person Dinghy Events, RRS 44.1 and RRS P2.1 are changed so that the Two-Turns Penalty is replaced by the One-Turn Penalty.
- 1.6. In RRS 44.2 insert after the first sentence: However, if Mark 1a is set, a boat may delay taking a penalty for an incident in the zone around Mark 1 or on the leg between Mark 1 and Mark 1a, as soon as possible after leaving the zone around Mark 1a.
- 1.7. For the race management of SNIPE class, the "Rules of Conduct for Conducting National and International Championship Regattas" issued by the SCIRA shall be adopted. If there is a conflict with SI, the "Rules of Conduct for Conducting National and International Championship Regattas" will take precedence.
- 1.8. If there is a conflict between languages, the English text will take precedence.

2. [DP] [NP] IDENTIFICATION · CAMERAS AND ELECTRONIC EQUIPMENT

Boats may be required to carry an electronic device as specified and supplied by the Organizing Authority. Boats shall accordance with this require.





3. CHANGES TO SAILING INSTRUCTIONS

- 3.1. Any change to the sailing instructions will be posted before 10:00 on the day it will take effect, except that any change to the format or schedule of races will be posted by 20:00 on the day before it will take effect.
- 3.2. The Race Area shall change no later than 30 minutes before the display of flag D or the removal of flag AP.

4. COMMUNICATION

- 4.1. The Official Notice Board will be online only, available on the event website.
The Official Notice Board URL: <https://bit.ly/45fwFaN>
- 4.2. Hearing may be held by using 'Zoom Meeting'.
- 4.3. On the water, the race committee intends to communicate with competitors on VHF radio, which channel is as follows:
 - 72ch : 470 · 420 · Optimist
 - 73ch : ILCA7 · ILCA6 · SNIPE
 - 74ch : 49er · FX · 29er
- 4.4. [DP] Except in an emergency or using devices that supplied by the race committee, a boat shall not make data transmissions and shall not receive data communication that is not available to all boats. This restriction shall also apply to cell phone.

5. CODE OF CONDUCT

- 5.1. [DP] Competitors and support persons shall comply with any reasonable request from the Race Officials.
- 5.2. [DP] Competitors and support persons shall handle any equipment provided by the organizing authority with proper care and seamanship, in accordance with any instructions for its use and without interfering with its functionality.

6. SIGNALS MADE ASHORE

- 6.1. Signals made ashore will be displayed on the official flag staff at under the evacuation building above the ship's rigging warehouse.
- 6.2. When flag AP is displayed ashore, '1 minute' in Race Signals AP is replaced with the time shown below.

| Race Area | Race Signal AP not less than time (minutes) |
|-----------|---|
| A | 25 |
| B1,B2,D | 40 |
| C,Cx | 50 |

- 6.3. [NP][SP] Flag D with one sound means 'The warning signal will not be made not less than the time defined below, after flag D is displayed.' Boats shall not leave the harbor until this signal is made.

| Race Area | Warning Signal not less than (minutes) |
|-----------|--|
| A | 25 |
| B1,B2,D | 40 |





| | |
|------|----|
| C,Cx | 50 |
|------|----|

7. DELETE (Missing Number)

8. SCHEDULE

8.1. The schedule is as follows:

8.1.1. ILCA7, ILCA6, 49er, 49erFX, 470

| Date | Event | Time |
|---------------------------------|---|----------------------|
| Day0- Thursday, 22 June 2023 | Measurement and Registration | 13:30-16:30 |
| Day1- Friday, 23 June 2023 | Measurement and Registration Warning signal for the first race | 08:30-09:30 10:45 |
| Day2- Saturday, 24 June 2023 | Warning signal for the first race | 10:30 |
| Day3- Sunday, 25 June 2023 | Warning signal for the first race Awards ceremony | 10:30 TBA |

8.1.2. 29er, SNIPE, Optimist,420

| Date | Event | Time |
|---------------------------------|---|----------------------|
| Day1- Friday, 23 June 2023 | Measurement and Registration | 13:30-16:30 |
| Day2- Saturday, 24 June 2023 | Measurement and Registration Warning signal for the first race | 08:30-09:30 10:45 |
| Day3- Sunday, 25 June 2023 | Warning signal for the first race Awards ceremony | 10:30 TBA |

8.2. 4 races shall be sailed each day. However, the SNIPE class shall have a maximum of three races per day.

8.3. When a race has not done at the scheduled day, it may hold on the next day by the discretion of the race committee.

8.4. The warning signal for the race following may be made as soon as possible.

8.5. On the last day of racing, no warning signal will be made after 13:30.

9. CLASS FLAGS

9.1. The class and fleet flags are as follows:

| Class | Insignia Color | Background Color |
|-------|----------------|------------------|
| ILCA7 | Red | White |
| ILCA6 | Red | Light Blue |





| | | |
|----------|-------|------------|
| 470 | Blue | White |
| 49er | Blue | White |
| FX | Blue | Light Blue |
| 29er | Blue | White |
| SNIPE | Red | White |
| 420 | Blue | Red White |
| Optimist | Black | White |

10. COURSE AREAS

The course areas are shown in SI Addendum A.

11. THE COURSES

11.1. The diagrams in SI Addendum B show the courses, the course designations, the approximate angles between legs, the order in which marks are to be passed, and the side on which each mark is to be left.

11.2. Courses will not be shortened. This changes RRS 32.

11.3. No later than the warning signal, the race committee signal vessel will display a flag or a board that indicates the course to be sailed and the approximate compass bearing of the first leg.

12. MARKS

12.1. Mark 1, 2, 3 and 4 or associated marks, will be as follows:

| Class | Marks 1, 2, 3s,3p | Marks 4s,4p | Mark 1a | New Mark | Starting Line Mark | Finishing Line Mark |
|----------------|--------------------------------------|---------------------------------------|------------|-------------------------------------|---|---|
| ILCA6 ILCA7 | Yellow circular truncated cone | | | Blue circular truncated cone | Race committee signal vessel and Race committee vessel | Race committee vessel and Yellow thin cylinder |
| 470 420 | Red circular truncated cone | | | Green circular truncated cone | Race committee signal vessel and Race committee vessel | Race committee vessel and Yellow thin cylinder |
| 49er FX | Pink circular truncated cone | | | Black circular truncated cone | Race committee vessel and Orange cylinder | Race committee vessel and Orange cylinder |
| 29er | Orange cylinder | Pink circular truncated cone | | Yellow thin cylinder | Race committee vessel and Orange cylinder | Race committee vessel and Orange cylinder |



| | | | | | |
|----------|--------------------------------|----------------------|------------------------------|--|--|
| SNIPE | Orange circular truncated cone | Yellow thin cylinder | Pink circular truncated cone | Race committee signal vessel and Race committee vessel | Race committee vessel and Yellow thin cylinder |
| Optimist | Green circular truncated cone | | | Race committee signal vessel and Race committee vessel | Race committee vessel and Yellow thin cylinder |

13. THE START

- 13.1. The starting line will be between a staff displaying an orange flag on the race committee signal vessel at the starboard end and either
- 13.1.1 the course side of the port-end inflatable mark, or
 - 13.1.2 a staff displaying an orange flag on the race committee vessel at the port end.
- 13.2. **[DP] [NP]** When a starting sequence is in progress, boats whose warning signal has not been made shall avoid the starting area. The starting area which shall be avoid are 100 meters from the starting line.
- 13.3. A boat starting later than 4 minutes after her starting signal will be scored DNS (Did Not Start) without a hearing. This changes RRS A5.1 and A5.2.

14. CHANGING THE NEXT LEG OF THE COURSE

To change the next leg of the course, the race committee may (a) set a new mark, (b) move the finishing line, or (c) move the leeward gate marks. If possible, the race committee may remove the original mark. When the new mark needs to change for another change of the next leg, the mark will be changed by an original mark.

15. THE FINISH

The finishing line will be between a staff displaying a blue flag on the race committee vessel and the course side of the inflatable mark.

16. PENALTY SYSTEM

- 16.1. RRS Appendix P, Special Procedures for Rule 42, will apply.
- 16.2. RRS P2.3 will not apply and RRS P2.2 is changed so that it will apply to any penalty after the first one.

17. TIME LIMITS AND TARGET TIME

17.1. Time limits and target times in minutes are as follows;

| Class | Time Limit | Mark 1 Time Limit | Finish Window | Target Time |
|-------|------------|-------------------|---------------|-------------|
| ILCA7 | 75 | 25 | 10 | 45 |
| ILCA6 | 75 | 25 | 10 | 45 |
| 470 | 75 | 25 | 10 | 45 |



| | | | | |
|----------|----|------------------|----|-------|
| 49er | 50 | 20 | 10 | 25 |
| FX | 50 | 20 | 10 | 25 |
| 29er | 50 | 20 | 10 | 25 |
| 420 | 80 | 25 | 10 | 40 |
| Optimist | 75 | 25 | 15 | 40 |
| SNIPE | 90 | 1 lap Time Limit | | |
| | | 40 | 10 | 45-60 |

17.2. If no boat has passed Mark 1 within the Mark 1 time limit the race will be abandoned. However, for the SNIPE class, if no boat has done the first lap within the '1 lap time limit', the race will be abandoned.

17.3. Boats failing to finish within the time stated in the Finish Window after the first boat sails the course and finishes will be scored DNF (Did Not Finish). This changes RRS 35, A4 and A5.

17.4. Failure to meet the target time will not be grounds for redress. This changes rule 62.1(a).

18. REQUEST FOR A HEARING

18.1. Protests and requests for redress or reopening shall be delivered to the online form at website(["Hearing Request"](#)) within the appropriate time limit. However, if the online form is difficult to submit, the request may be brought to the Race Secretary Office.

18.2. For each class, the protest time limit is 70 minutes after the last boat in that class has finished the last race of the day or the race committee signals no more racing today, whichever is later. The time will be posted on the official notice board(["Protest time limit"](#)).

18.3. [Notices](#) will be posted no later than 15 minutes after the ["Protest time limit"](#) to inform competitors of hearings in which they are parties or named as witnesses. Hearing will begin at the [time posted](#) in the hearing room on the 3F of the Sailing Center or in the Zoom meeting which will be announced to the party.

18.4. Notices of protests by the Race Committee, Technical Committee, or Protest Committee will be posted to inform boats under RRS 61.1(b).

18.5. A list of boats that have been penalized for breaking RRS 42 under Appendix P will be [posted](#).

18.6. The "authority responsible" of RRS64.4(b) is the technical committee of this regatta.

18.7. Penalties for breaches of class rules, or rules in the NoR and SIs marked [DP] are at the discretion of the International Jury. The guideline of these breaches and the associated penalties will be posted on the [Official Notice Board](#).

18.8. For breaches of rules in the NoR and SIs marked [SP], the Race Committee may apply a standard penalty without a hearing. The guideline of these breaches and the associated penalties will be posted on the [Official Notice Board](#), and it will be scored STP. However, the Race Committee may protest a boat when they consider the standard penalty to be inappropriate. A boat that has been penalized with a standard penalty can neither be protested for the same incident by another boat nor can another boat request redress for this Race Committee action. This changes RRS 60.1, 63.1 and A5.

18.9. Breaches of rules in the NoR and SIs marked [NP] shall not be grounds for a protest by a boat. This changes RRS 60.1(a).





19. SCORING

- 19.1. To request correction of an alleged error in posted race or series results, a boat may complete and deliver "[scoring enquiry form](#)". However, if the online form is difficult to submit, the request may be brought to the Race Secretary Office.
- 19.2. One race is required to be completed to constitute a regatta.
- 19.3. When fewer than three races have been completed, a boat's series score will be the total of her race scores.
- 19.4. When three or more races have been completed, a boat's series score will be the total of her race scores excluding her worst score.

20. [DP] [NP] SAFETY REGULATIONS

- 20.1. Check-out and Check-in
 - 20.1.1. **[SP]** Before leaving to race, boats shall sign the 'Check-out form' at the regatta office.
 - 20.1.2. **[SP]** After returning ashore, boats shall sign the 'Check-in form' at the regatta office before the protest time limit.
 - 20.1.3. **[DP]** When a boat retires offshore, if possible, she shall notify the Race Committee vessel before leaving the racing area, and also, she shall report the Race Committee as soon as possible after returning ashore.
- 20.2. **[DP]** Boats not racing shall remain clear of boats that are racing.
- 20.3. When the Race Committee displays flag V, all official vessels and support person vessels shall comply with any instruction given by the Race Committee or the Organizing Authority as assistance / rescue boats. Support person vessels shall rescue any boats in danger as soon as possible.
- 20.4. **[DP] [NP]** Competitors shall wear personal flotation devices at all times while afloat, except briefly while changing or adjusting clothing or personal equipment. When no specifications are given in the class rules, personal buoyancy complying with minimum standard ISO 12402-5 (CE 50 Newtons), or USCG Type III, or AUS PFD 1, or EN 393, will be accepted.

21. [DP] REPLACEMENT OF CREW OR EQUIPMENT

- 21.1. Substitution of competitors will not be allowed without prior written approval of the Race Committee and shall comply with any restrictions in the Notice of Race.
- 21.2. Substitution of damaged or lost equipment will not be allowed unless authorized by the Technical Committee. Request of substitution shall be made to the committee at the first reasonable opportunity.

22. [DP] EQUIPMENT AND MEASUREMENT CHECKS

- 22.1. A boat or equipment may be inspected at any time for compliance with the class rule and the Sailing Instructions.
- 22.2. Boats shall comply when the technical committee requests to go to the specified area for inspection on the water.





23. OFFICIAL VESSELS

Official vessels will be marked as follows:

| Vessel | Flag description |
|---------------------|---|
| Race Committee | Pink flag with red " RC " |
| International Jury | Black flag with white " JURY " |
| Media | Blue flag with white "MEDIA" |
| Technical Committee | Yellow green flag with white "Measurer" |

24. [DP] SUPPORT PERSON VESSELS

- 24.1. Except when rendering assistance to a boat in danger at the boat's request or at the request of the Race Committee, support person vessels shall stay 100 meters outside areas where boats are racing from the time of the Preparatory Signal for the first Class to start until the time the last boat finishes or the Race Committee signals a postponement, general recall or abandonment
- 24.2. The support person vessels shall display a pink ribbon which will be provided by the Organizing Authority, from departure till return to the port.

25. TRASH DISPOSAL

Trash may be placed aboard support person vessels or race committee / Jury vessels.

26. RISK STATEMENT

RRS 3 states: 'The responsibility for a boat's decision to participate in a race or to continue racing is hers alone.' By participating in this event each competitor agrees and acknowledges that sailing is a potentially dangerous activity with inherent risks. These risks include strong winds and rough seas, sudden changes in weather, failure of equipment, boat handling errors, poor seamanship by other boats, loss of balance on an unstable platform and fatigue resulting in increased risk of injury. Inherent in the sport of sailing is the risk of permanent, catastrophic injury or death by drowning, trauma, hypothermia or other causes.

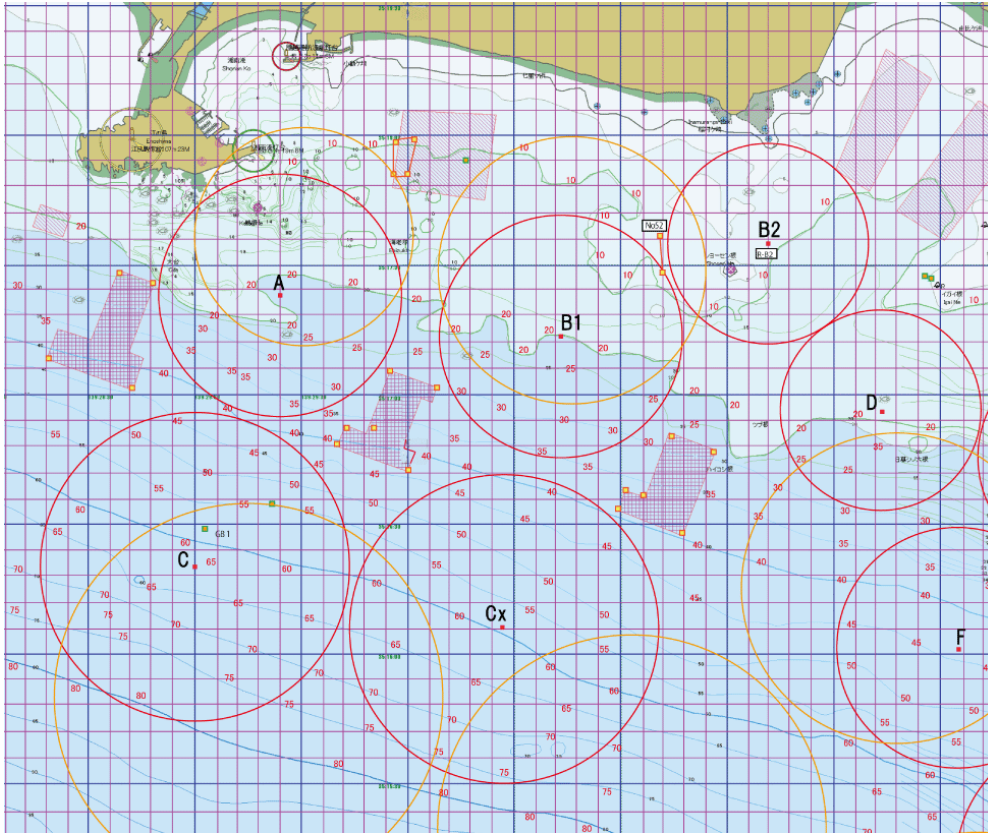
27. [SP] TRACKING EQUIPMENT

- 27.1. Boats shall carry the tracking equipment at the specified position. The tracking equipment shall be returned accordance with the race committee. The way to deliver and the specified position of the tracking equipment shall be announced.
- 27.2. Radio communications performed by the tracking equipment is not a breach of SI 4.4.





SI Addendum A COURSE AREAS



SI Addendum B COURSE ILLUSTRATION

I

Course: Inner Trapezoid

| Signal | Mark Rounding Order |
|--------|---|
| I2 | Start - 1 - 4s/4p - 1 - 2 - 3p - Finish |
| I3 | Start - 1 - 4s/4p - 1 - 4s/4p - 1 - 2 - 3p - Finish |
| I4 | Start - 1 - 4s/4p - 1 - 4s/4p - 1 - 4s/4p - 1 - 2 - 3p - Finish |

O

Course: Outer Trapezoid

| Signal | Mark Rounding Order |
|--------|---|
| O2 | Start - 1 - 2 - 3s/3p - 2 - 3p - Finish |
| O3 | Start - 1 - 2 - 3s/3p - 2 - 3s/3p - 2 - 3p - Finish |
| O4 | Start - 1 - 2 - 3s/3p - 2 - 3s/3p - 2 - 3s/3p - 2 - 3p - Finish |

LG

Course: Windward/Leeward

| Signal | Mark Rounding Order |
|--------|---|
| LG2 | Start - 1 - 4s/4p - 1 - 4s - Finish |
| LG3 | Start - 1 - 4s/4p - 1 - 4s/4p - 1 - 4s - Finish |
| LG4 | Start - 1 - 4s/4p - 1 - 4s/4p - 1 - 4s/4p - 1 - 4s - Finish |

LR

Course: Windward/Leeward

| Signal | Mark Rounding Order |
|--------|---|
| LR2 | Start - 1 - 4s/4p - 1 - 4p - Finish |
| LR3 | Start - 1 - 4s/4p - 1 - 4s/4p - 1 - 4p - Finish |
| LR4 | Start - 1 - 4s/4p - 1 - 4s/4p - 1 - 4s/4p - 1 - 4p - Finish |

L

| Signal | Mark Rounding Order |
|--------|--|
| L2 | Start - 1 - 4s/4p - 1 - Finish |
| L3 | Start - 1 - 4s/4p - 1 - 4s/4p - 1 - Finish |
| L4 | Start - 1 - 4s/4p - 1 - 4s/4p - 1 - 4s/4p - 1 - Finish |

Course: Windward/Leeward

Optimist

| Mark Rounding Order |
|--------------------------------|
| Start - 1 - 2 - 3s/3p - Finish |

Course: Outer Trapezoid

SNIFE

| | | |
|--|---|---|
| <p>Code flag "W" start - 1 - 1bis - gate(3s/3p) - 1 - 1bis - gate(3s/3p) - finish</p> | <p>Code flag "0" start - 1 - 2 - 3 - 1 - 3 - finish</p> | <p>Code flag "T" start - 1 - 2 - 3 - 1 - 2 - 3 - finish</p> |
| <p>Code flag "W2" start - 1 - 1bis - gate(3s/3p) - 1 - 1bis - 3p - finish</p> | <p>Code flag "02" start - 1 - 2 - 3 - 1 - 3 - finish</p> | <p>Code flag "T2" start - 1 - 2 - 3 - 1 - 2 - 3 - finish</p> |



SI Addendum C RACE SCHEDULE

| Class | Friday 23 | | | Saturday 24 | | | Sunday 25 | | |
|----------------|-----------|---------|---|-------------|---------|---|-----------|---------|---|
| | Area | Warning | # | Area | Warning | # | Area | Warning | # |
| ILCA7 ILCA6 | B1 | 10:45 | 3 | B2、 D | 10:30 | 3 | B2、 D | 10:30 | 2 |
| 470 | C | 10:45 | 3 | Cx | 10:30 | 3 | Cx | 10:30 | 2 |
| 420 | | | | Cx | 10:45 | 3 | Cx | 10:35 | 3 |
| 49er FX | A | 10:45 | 4 | A | 10:30 | 4 | A | 10:30 | 4 |
| 29er | | | | A | 10:45 | 4 | A | 10:35 | 4 |
| SNIPE | | | | C | 10:45 | 3 | C | 10:30 | 3 |
| Optimist | | | | B1 | 10:45 | 3 | B1 | 10:30 | 3 |

