

SAILING INSTRUCTIONS

SNIFE CLASS INTERNATIONAL RACING ASSOCIATION

2021 Snipe Open European Championship

European Championship Trophy

August 30th - September 4th 2021

JK Split

Split, Croatia

Notation [NP]

The notation [NP] in a rule in the SI means that a breach of this rule shall not be grounds for a protest by a boat.

Notation [SP]

The notation [SP] in a rule in the SI means that for a breach of this rule a standard penalty will be applied.

Notation [DP]

The notation [DP] in a rule in the SI means that for a breach of this rule a discretional penalty will be applied.

1 RULES

- 1.1 The regatta will be governed by the rules as defined in *The Racing Rules of Sailing*.
- 1.2 No National prescription will apply.
- 1.3 The Rules of Conduct for Conducting National and International Championship and the trophy restrictions of European Championship Trophy will apply. Any conflict arising between the Deed of Gift and the SCIRA Rules of Conduct shall be solved by the application of the Rules of Conduct.
- 1.4 In case of conflict between the Notice of Race and the Sailing Instructions the Sailing Instructions shall prevail.
- 1.5 If there is a conflict between languages the English text will take precedence.

2 NOTICES TO COMPETITORS

Notices to competitors will be posted on the official notice board located at:

<https://www.racingrulesofsailing.org/documents/2517/event>.

3 CHANGES TO SAILING INSTRUCTIONS

- 3.1 Any change to the sailing instructions will be posted before 10:00 on the day it will take effect, except that any change to the schedule of races will be posted by 20:00 on the day before it will take effect.
- 3.2 Any change or amendment to the Sailing Instructions shall be approved with the SCIRA Representative.

4 SIGNALS MADE ASHORE

- 4.1 Signals made ashore will be displayed at the signalling mast in front of JK Split boat hangar.
- 4.2 When the "AP" race signal is displayed ashore, '1 minute' is replaced with 'not less than 60 minutes' in the race signal "AP"
- 4.3 [NP] [DP]. When the "AP over H" race signal is displayed ashore, the boats shall not leave the harbour. The warning signal will be displayed no less than 60 minutes after the signal is lowered with one sound

5 SCHEDULE OF RACES

5.1 Dates of racing:

<u>Date</u>	<u>Time of</u> <u>Warning Signal</u>	
September 1 st	12:00	Racing
September 2 nd	12:00	Racing
September 3 rd	12:00	Racing
September 4 th	12:00	Racing

- 5.2 The regatta shall consist of eight (8) races.
- 5.3 No more than two (2) races shall be sailed per day; three (3) races can be sailed only if behind schedule.
- 5.4 In case of a prolonged postponement, to alert boats that a race or sequence of races will begin soon, an orange flag will be displayed with one sound for at least four (4) minutes before a warning signal is made. RC failure to apply **this** instruction are not grounds for redress. This changes RRS 62.1(a).
- 5.5 On the last day of racing no warning signal will be made after 4pm on Saturday 4th September, except as a consequence of a General Recall.
- 5.6 There will be a competitors meeting on Wednesday 1st September in front of JK Split club hangar two (2) hours before scheduled time of first warning signal and announced by two horn signals.

6 CLASS FLAGS

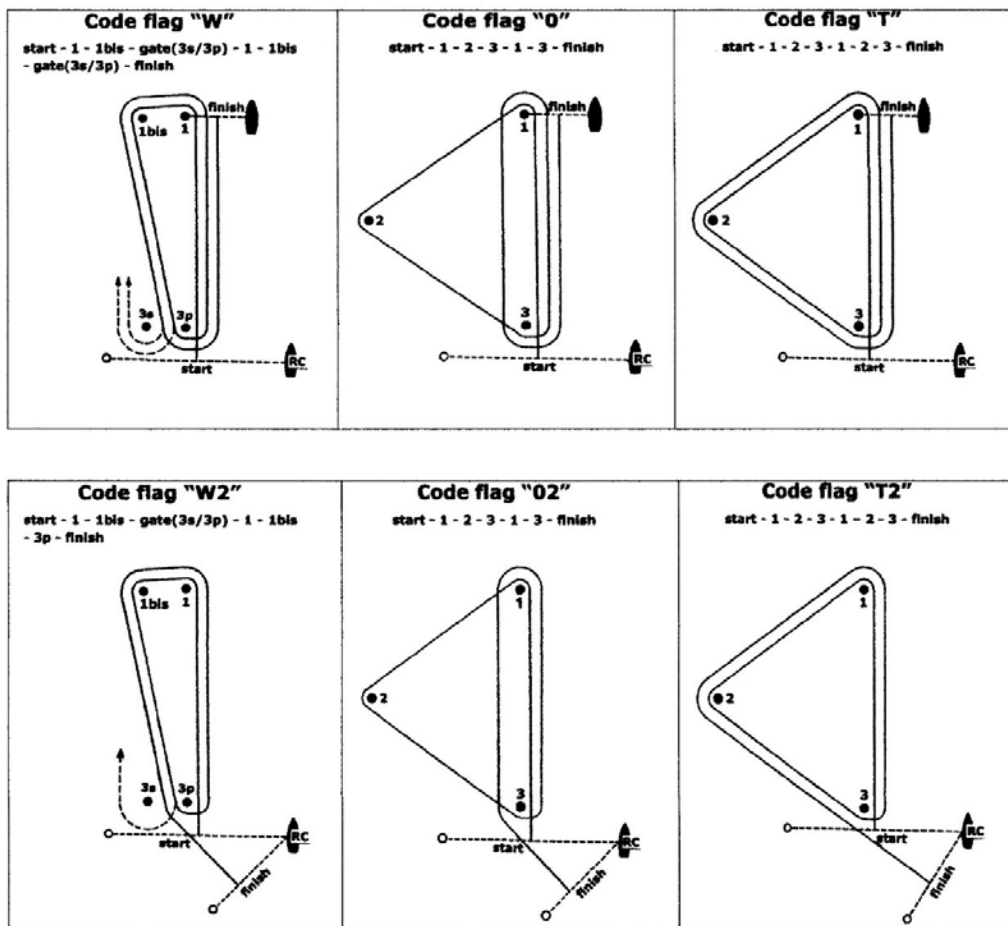
The official Class Flag shall be the Snipe Class flag, a red Snipe on a white background.

7 RACING AREAS
Attachment "A" shows the location of racing areas.

8 WEATHER LIMITATION (Course and Starting)
The wind speed ranges shall be in accordance with the Rules of Conduct for Conducting National and International Championships and the applicable Deed of Gift.

9 THE COURSES

9.1 The diagrams below show the courses, including the approximate angles between legs, the order in which marks are to be passed. All course marks (except gates) shall be left to port.



9.2 The course signal (code flag "W", "T", "O", "W2", "T2" or "O2") shall be displayed with one sound at least one minute before the warning signal. It will remain displayed for not less than five minutes after the start.

9.3 No later than the warning signal, the Race Committee signal boat will display the approximate compass bearing of the first leg.

9.4 If during a race the wind and/or wave action changes to the point where the selected course would be inadvisable (See Course Selection Diagram), the Race Committee shall change the course at any mark. A change in the type of course during the race shall be signalled displaying the new appropriate flag and accompanied by repetitive sounds before the leading boat has passed or rounded the mark.

9.5 A sustained wind variation of 20 degrees or more from the posted bearing during the first leg of a race shall result in the race to be abandoned and re-sailed, or abandoned. This changes the RRS 32.1.

9.6 A sustained wind variation of 40 degrees or more from the posted bearing during the first lap shall result in the race being abandoned and re-sailed, or abandoned. For the purpose of this rule, a lap means the rounding of mark 3 (or passing the gate 3s-3p) for the first time. This changes the RRS 32.1.

9.7 The number of legs in a race may be reduced (RRS code flag S) but at least 2 (two) windward legs of the race shall be completed. This changes the RRS 32.2.

10 MARKS

10.1 Marks 1, 1bis, 2, 3, 3s and 3p will be inflatable red cylindrical buoys.

10.2 New marks, as provided in instruction 13.1, will be yellow cylindrical buoys.

10.3 The port-end starting mark will be:
a boat with an orange flag displayed;

10.4 The finishing mark will be:

- mark 1 for “W”, “O”, and “T” courses;
- a inflatable red cylindrical buoy for “W2”, “O2”, and “T2” courses
- 10.5 A Race Committee vessel signalling a change of a leg of the course is a mark as provided in SI 13.2.
- 10.6 If one of the marks "gate 3s-3p" is not placed, or is not replaced as per RRS 34, the remaining mark shall be left to port. This changes the RRS 34.

- 11 RESERVE

- 12 THE START
- 12.1 RRS 30.4 is changed so that it will be applied to a fleet with more than 45 boats and only after the 2nd General Recall.
- 12.2 The starting line will be between a staff displaying an orange flag on the Race Committee vessel at the starboard end and a staff displaying an orange flag on the starting mark as provided in instruction 10.3.
- 12.3 A boat starting later than 5 minutes after her starting signal will be scored Did Not Start without a hearing. This changes Appendices A4 and A5.
- 12.4 The Race Committee, after the finish of a race and before the warning signal of a subsequent one, will do its best to post on the Race Committee vessel a list of OCS, or ZFP, UFD or BFD boats. The failure of posting or an incomplete or wrong list will not be grounds for redress. This changes the RRS 62.1(a).

- 13 CHANGE OF THE NEXT LEG OF THE COURSE
- 13.1 To change the next leg of the course, the Race Committee will lay a new mark (or move the finishing line) and remove the original mark as soon as practicable. When in a subsequent change a new mark is replaced, it will be replaced by an original mark.
- 13.2 Except at a gate, boats shall pass between the race committee boat signalling the change of the next leg and the nearby mark, leaving the mark to port and the Race Committee vessel starboard. This changes the RRS 28.
- 13.3 After the completion of first windward leg of the race, the remaining legs may be increased or decreased by not more than 30% of the original length. This changes the RRS 33.
- 13.4 If Mark 1 will be changed in courses “W” or “W2”, Mark 1bis (offset) will no longer be a course mark.

- 14 THE FINISH
- 14.1 The finish line will be between a staff displaying a blue flag on a Race Committee vessel and the course side of the finishing mark as provided in 10.4.
- 14.2 The A flag on the Race Committee boat at the finish means that there will be no more races for the day.

- 15 PENALTY SYSTEM
Appendix P will apply.

- 16 TIME LIMITS AND TARGET TIMES
- 16.1 The races will be managed to last 60-75 minutes for the first boat to finish. A different time (shorter or longer) used to complete the race will not be ground for requesting redress. This changes RRS 62.1(a).
- 16.2 The time limit for the first boat to complete the first lap is 40 minutes from the start. If the first boat fails to complete the first lap within 40 minutes the Race Committee shall abandon the race. For the purpose of this rule a lap means the rounding of Mark 3 (or passing the Gate 3s/3p) for the first time.
- 16.3 The time limit for the first boat to finish the race shall be 1 hour 30 minutes. Any boat finishing more than 30 minutes after the first boat finishes or failing to finish within 2 hours from the start, whichever is shorter shall be scored Did Not Finish (DNF). This changes RRS 35, A4 and A5.

- 17 PROTESTS AND REQUESTS FOR REDRESS
- 17.1 Appendix T will apply.
- 17.2 Protest forms are available at the <https://www.racingrulesofsailing.org/documents/2517/event>. Protests and requests for redress or reopening shall be delivered there within the appropriate time limit.
- 17.3 The protest time limit is 90 minutes after the last boat has finished the last race of the day or the Race Committee signals no more racing today, whichever is later.
- 17.4 Notices will be posted no later than 30 minutes after the protest time limit to inform competitors of hearings in which they are parties or named as witnesses. Hearings will be held in the protest room, located on the first floor in JK Split boat hangar, beginning at the time posted.
- 17.5 Notices of protests by the Race Committee, Technical Committee or Protest Committee will be posted to inform boats under RRS 61.1(b).
- 17.6 A list of boats that have been penalized for breaking RRS 42 will be posted on the Official Notice Board.
- 17.7 A list of boats that have been penalized for breaking RRS 29.1(OCS) or 30.1(OCS) or 30.2(ZPF) 30.3(UFD) and 30.4 (BFD) will be posted on the Official Notice Board.
- 17.8 Breaches of rules in the SI marked with [NP] and NoR 3.4 (bow numbers) will not be grounds for a protest by a boat. This changes the RRS 60.1(a).
- 17.9 The penalty for breaking rules in the SI marked with [SP] and NoR 3.4 (bow numbers) may be applied at the discretion of the Race Committee, without a hearing, and shall be the 5% scoring penalty for nearest race completed by the infringing boat but not worse than the number of points corresponding to DSQ. This changes the RRS 63.1 and the App.A5.
- 17.10 The penalty for breaking rules in the SI marked with [DP] may be applied at the discretion of the Protest Committee.

- 17.11 Penalties for breaking Class Rules may be less than disqualification.
- 17.12 A list of boats that have been penalized as per SI 17.9 and 17.10 will be posted on the Official Notice Board.
- 17.13 An International Jury is constituted and shall have authority per RRS Appendix N. Their decision shall be final as provided in RRS 70.5. Per Appendix N2.2, organizing authority reserves for itself the right and responsibility to decide issues of eligibility and measurement .
- 17.14 For the purpose of RRS 64.4(b) the “authority responsible” is the Measurer of the event.
- 17.15 The Jury will abandon the race if, during a redress hearing, they conclude that the Race Committee did not follow Sailing Instructions 8, 9.5, 9.6, 9.7, and 13.3. This changes the RRS 64.3.

18 SCORING

- 18.1 Three (3) races are required to be completed to constitute a series-
- 18.2 (a) When fewer than 7 races have been completed, a boat’s series score is the total of her race scores.
(b) When from 7 to 8 races have been completed, a boat’s series score is the total of her race scores excluding her worst score.

19 [NP][SP][DP] SAFETY REGULATIONS

- 19.1 Before the warning signal of the first race of the day each boat is required to sail past the stern of the Race Committee boat on starboard tack and verbally check in. The check-in boat will display a L flag while on station prior to the first warning signal. If no separate check-in boat is on station competitors will check in with the main Race Committee boat. When the Race Committee verbally acknowledges a boat’s bow number, the check-in has been officially noted.
- 19.2 A boat that retires from a race shall notify the Race Committee as soon as possible.

20 REPLACEMENT OF CREW OR EQUIPMENT

- 20.1 The same crew shall race in all races, except for reasons satisfactory to the Race Committee. Requests for a change of crew shall be submitted by filling the appropriate form on <https://www.racingrulesofsailing.org/documents/2517/event> to the Chairman. Once a crew has been excused, he/she may not return for the balance of the series.
- 20.2 The same helmsman shall sail all races and can be replaced after the first race only, and then only if he/she is obviously incapacitated. If a helmsman is replaced, the boat score in her first race shall be DNC
- 20.3 [DP] Substitution of damaged or lost equipment will not be allowed unless authorized by the Race Committee. Requests for substitution shall be made to the Race Committee at the first reasonable opportunity.

21 [NP] EQUIPMENT AND MEASUREMENT CHECKS

A boat or equipment may be inspected at any time for compliance with the Class Rules and Sailing Instructions. On the water, a boat can be instructed by a member of the Race Committee, or the Technical Committee, or the equipment inspector or measurer, to proceed immediately to a designated area for inspection.

22 [NP][SP] EVENT ADVERTISING

Boats shall display event advertising with bow numbers supplied by the organizing authority as described in attachment “B”.

23 OFFICIAL BOATS

Official boats will be marked as follows:

Jury boats: white flag with black letters “Jury”

RC boats: white flag with black letters “RC”

Media boats: white flag with black letters: “PRESS”

24 [NP] [DP] SUPPORT BOATS

- 24.1 At the preparatory signal, coaches must be positioned at least 50 meters below the starting line. After the starting signal coaches may follow the fleet, but only on the port side of the course and must stay 50 meters from any mark
- 24.2 Coaches shall not communicate with competitors after the warning signal for any race until after the competitors have finished the race.
- 24.3 Coaches shall register at the Regatta Office and all support boats shall be identified by number on sticker issued by race office.

25 [NP] [DP] TRASH DISPOSAL

Trash may be placed aboard support and Committee Vessels.

26 PRIZES

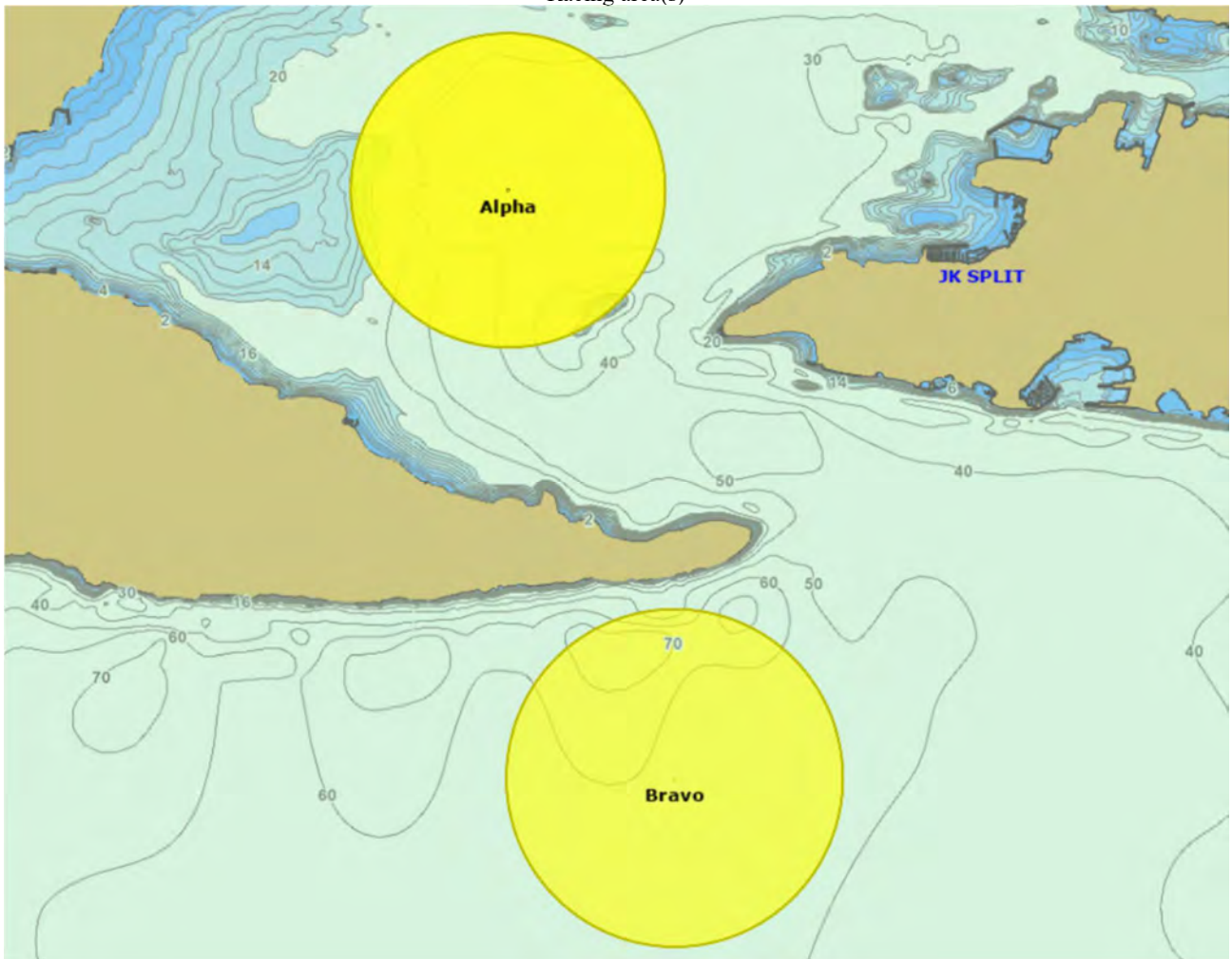
Prizes shall be awarded as provided by NoR.

Signatures:

Alen Kustic (IRO) - Race Committee Chairman

Sue Roberts - SCIRA Representative

Attachment "A"
Racing area(s)



Attachment B



