

2023 Optimist Irish National and Open Championships

17 – 20 August 2023

Ballyholme Yacht Club, Seacliff Road, Bangor, Co. Down

SUPPLEMENTARY SAILING INSTRUCTIONS (SSIs)

1 RULES

- 1.1 These Supplementary Sailing Instructions (SSIs) are to be read in conjunction with the current IODAI Major Event Sailing Instructions (MESIs). If there is a conflict between the Notice of Race or MESI and these SSIs, these SSIs shall prevail.

2 COMMUNICATIONS WITH COMPETITORS

- 2.1 The official notice board is located online at rrs.org - [2023 Irish National and Open](#) . Alerts regarding notices may be made on the IODAI [WhatsApp groups](#).
- 2.2 The race office is located at Ballyholme Yacht Club Cadet Room, telephone +44 (0) 28 9127 1467, email ClubManager@ballyholme.com.
- 2.3 On the water, the Main Fleet race committee intends to monitor and communicate on VHF radio channel <77>.

3 SIGNALS MADE ASHORE

- 3.1 Signals made ashore shall be displayed at the Main Mast in front of the clubhouse.



4 SCHEDULE

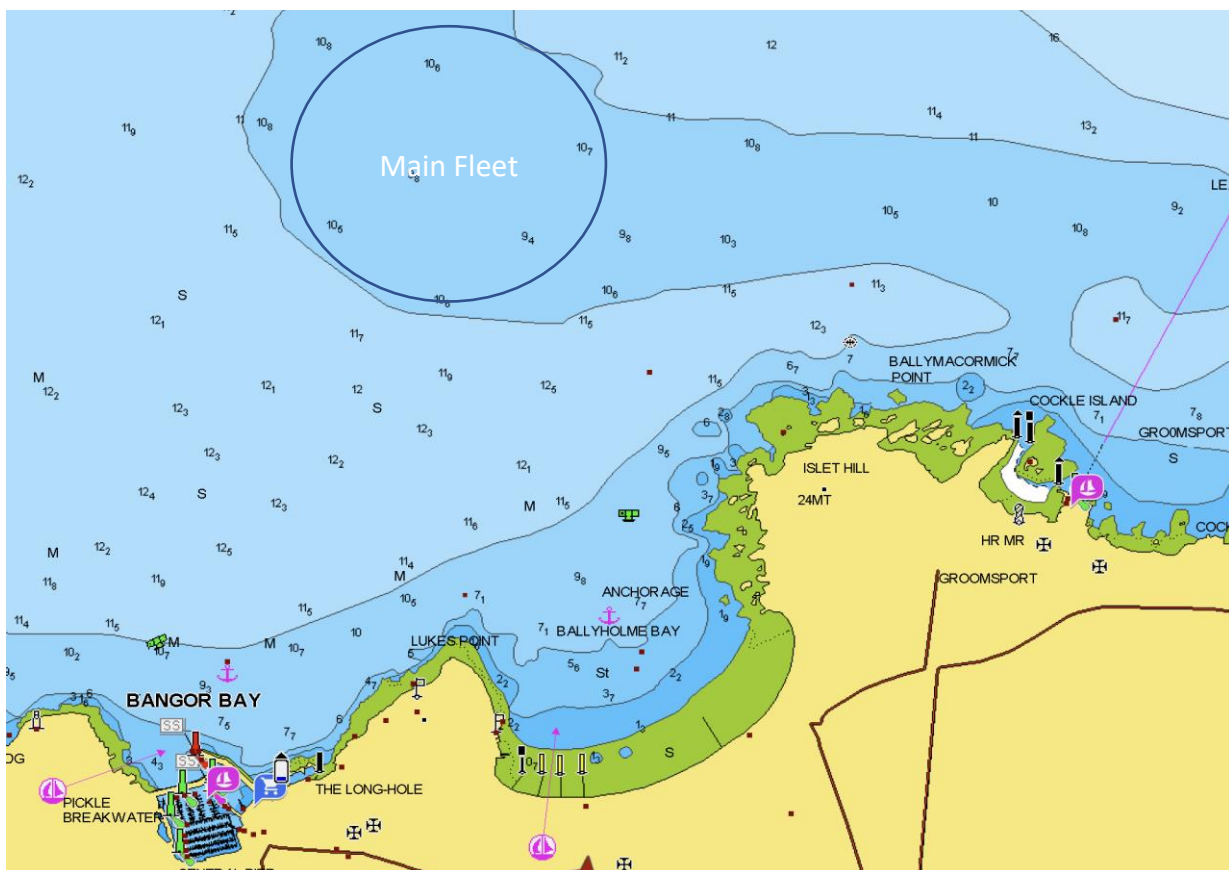
Wed 16th August	Event Registration	17:00 to 19:00
	Opening Ceremony, Team Racing Prizegiving and Raffle	18:00
Thurs 17th August (HW Bangor 12:51)	Event Registration	08:30 to 10:30
	Support Rib Briefing	09:30
	Main Fleet Briefing, launch ASAP after	10:00
	Main Fleet First Warning Signal	11:55
	Daily Prizegiving and Raffle	ASAP after racing
Friday 18th August (HW Bangor 13:26)	Main Fleet Launching	10:00
	Main Fleet First Warning Signal	10:55
	Daily Prizegiving and Raffle	ASAP after racing
Sat 19th August (HW Bangor 14:00)	Main Fleet Launching	10:00
	Main Fleet First Warning Signal	10:55
	Daily Prizegiving and Raffle	ASAP after racing
Sun 20th August (HW Bangor 14:33)	Main Fleet Launching	10:00
	Main Fleet First Warning Signal	10:55
	Final Prizegiving	ASAP after racing

5 CLASS DIVISIONS AND FLAGS

5.1 Junior fleet shall be identified by purple ribbons and Senior fleet by light blue ribbons. There shall be no separate ribbon designations for gold, silver and bronze fleets. This changes MESI 7.5.

6 RACING AREA

6.1 The racing area for main fleet is approximately 1NM North of the mouth of Ballyholme Bay.

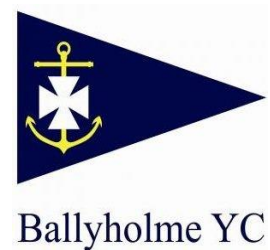


7 MARKS

7.1 All racing marks are spherical yellow inflatables.

7.2 The pin end starting mark, if used, is a spherical green inflatable.

7.3 The pin end of the finishing line, except when a race is shortened at a mark of the course, is a spherical red inflatable.



8 OBSTRUCTIONS

- 8.1 There are no obstructions in the race area, but support boats should be aware that a reef extends Northeast from Lukes Point and particular care should be taken if moving between the Yacht Club jetty and the Marina at low tide.

9 THE START

- 9.1 The starting line is between an orange staff displaying an orange flag on the committee boat at the starboard end and either an orange staff displaying an orange flag on the pin end starting vessel or a green mark at the port end.

10 THE FINISH

- 10.1 The finishing line is between a staff displaying a blue flag on the finishing boat at the starboard end and the course side of the port end finishing mark.

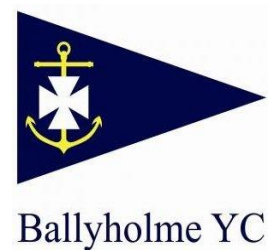
11 HEARING REQUESTS

- 11.1 Hearing requests shall conform to the requirements of RRS Part 5, Section A, and shall be lodged online using the link on the official notice board at rrs.org - [2023 Irish National and Open](#).

12 OFFICIAL VESSELS

- 12.1 Official vessels, other than those listed below, will carry yellow flags. Jury boats will carry a green flag marked Jury.

Role	Name	Description
Committee Vessel	Alikadoo	37' sloop, White hull.
Port end starting boat	Rib, Orange 5.5m	6m rib or Green Mark
Finishing boat	Puffin	Hardy 20. Blue Hull.



13 [DP] SUPPORT TEAMS

- 13.1 Support person vessels shall be identified with a numbered white flag obtained at rib and support boat registration - £20 or €20 deposit payable at registration.
- 13.2 All support boat drivers must attend a safety briefing at the clubhouse on the first morning of the event.
- 13.3 Personal buoyancy must be worn at all times.
- 13.4 When the engine is running Kill cords MUST be worn by the helmsperson. Failure to comply with SSI 13.4 will result in the support vessel being excluded from the race area.
- 13.5 Support vessels must be equipped with a working VHF radio and monitor the channel appropriate to the fleet they are supporting.
- 13.6 From the time of the preparatory signal for each race, Support vessels shall stay below a line approximately 100m to leeward of the starting line and at least 100m outside of the course and its extremities throughout the passage of that race.
- 13.7 Towing of competitors to and from the race area shall not be permitted unless requested or approved by the race committee. This shall be broadcast via VHF.