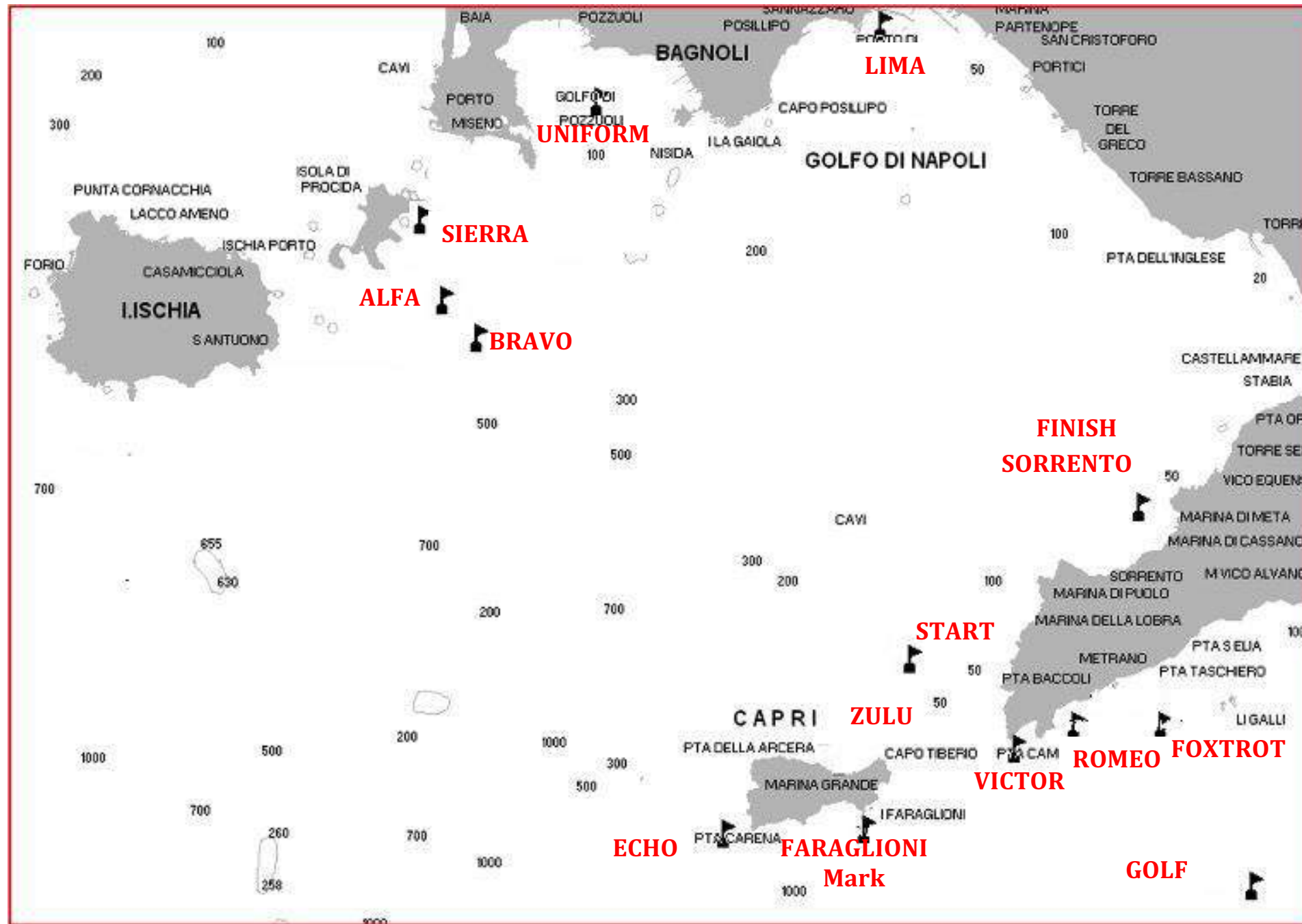


TRE GOLFI SAILING WEEK









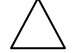





SAILING INSTRUCTIONS

COASTAL COURSES BOOKLET



1. WAYPOINT LIST

WPT NAME	Description	LAT. N	LONG. E	
ALFA	Service boat with flag “M” (Mike) at	40° 43.400	014° 03.000	
BRAVO	Service boat with flag “M” (Mike) at	40° 42.900	014° 03.750	
ECHO	Lighthouse at Punta Carena	40° 32.165	014° 11.813	
FARAGLIONI MARK	Service boat with flag “M” (Mike) at	40° 32.150	014° 15.170	
FARAGLIONI ROCKS		40° 32.375	014° 15.170	
FOXTROT	Service boat with flag “M” (Mike) at	40° 34.400	014° 23.900	
GOLF	Service boat with flag “M” (Mike) at	40° 30.900	014° 26.600	
LIMA	White pyramidal inflatable buoy at	40° 49.745	014° 15.631	
ROMEO	Service boat with flag “M” (Mike) at	40° 34.000	014° 21.350	
SIERRA	Service boat with flag “M” (Mike) at	40° 45.300	014° 02.310	
SORRENTO	Finish white pyramidal inflatable buoy at	40° 39.200	014° 23.000	
UNIFORM	Beacon at	40° 48.069	014° 07.257	
VICTOR	Service boat with flag “M” (Mike) at	40° 33.950	014° 19.300	
ZULU	Yellow pyramidal inflatable buoy at	40° 34.270	014° 16.300	

All the Lat. Long. are approximated

Inflatable buoys may be replaced by a service boat with a flag “M” (Mike) or a Smartmark.

2. MARK DESCRIPTION

- a) “SORRENTO” and “LIMA” marks are white pyramidal inflatable buoys with a sponsor logo.
- b) “UNIFORM” Mark is a yellow beacon with an X-shape on top.
- c) All the other marks in the different courses may be:
 - 1) a service boat or,
 - 2) a Smartmark,
 - 3) yellow pyramidal inflatable buoy,
- d) The service boat will display an orange flag and a flag “M” (Mike), repeated sounds will not be made.
This changes RRS 34(b).
- e) The Smartmark is an automatic mark described as a yellow or white inflatable cone on top of a motorised base.

3. COURSE KEY

- (S) after the name of mark means that mark is to be rounded to starboard.
(P) after the name of mark means that mark is to be rounded to port.

4. POSSIBLE WINDWARD MARK

A windward mark may be set at about 1 to 5 NM from the starting line. The RC, before the warning signal, will display bearing and distance to the mark along with a green or red flag signalling that the mark shall be left to starboard or to port, respectively.

5. FINISHING LINE

- a) The finishing line will be a straight line between the finishing mark on the port end and the RC vessel displaying a Blue flag on the starboard end of the line.
- b) The RC vessel may be replaced by a service boat displaying flag “F” (Foxtrot).
- c) The white pyramidal finishing mark may be replaced with a white Smartmark.

6. CUSTOM COURSE 00

The RC may create a custom course that is not described in the SI Coastal Course Booklet. The RC shall announce the marks and course on VHF 72 no later than 30 minutes prior to the warning signal.

7. RESTRICTED AREAS

A boat racing shall neither enter nor sail in the exclusion zones listed in 7.a, 7.b and 7.c also defined in the “dm 13_06_2000 and dm_27-12-2007”

(see attached map on the next page)

For a breach of this Rule, the RC shall score the boat DSQ, without a hearing. *This changes RRS 63.1 and A5.*

a) The restricted area of “Scoglio del Vervece” is delimited by:

B 40° 37.270 N - 014° 19.440 E

BC 40° 37.080 N - 014° 19.420 E

BA 40° 37.420 N - 014° 19.660 E

BB 40° 36.980 N - 014° 19.710 E

b) The restricted area of “Scoglio di Vetara” is delimited by:

M 40° 35.200 N - 014° 23.510 E

W 40° 34.820 N - 014° 23.510 E

X 40° 35.250 N - 014° 25.270 E

U 40° 34.880 N - 014° 25.010 E

c) The restricted area of “Regno di Nettuno” is delimited by:

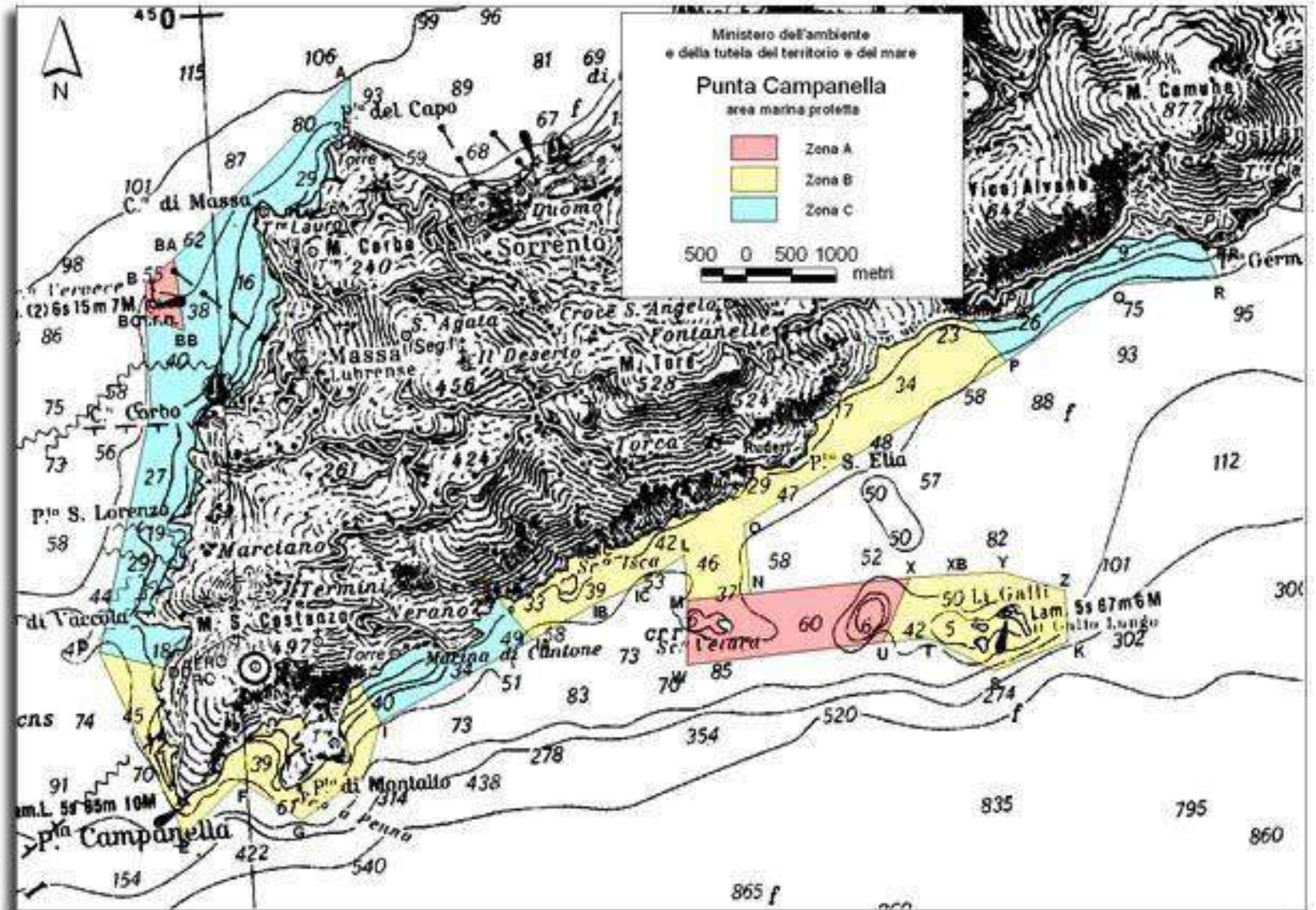
40° 44.895 N - 013° 59.201 E

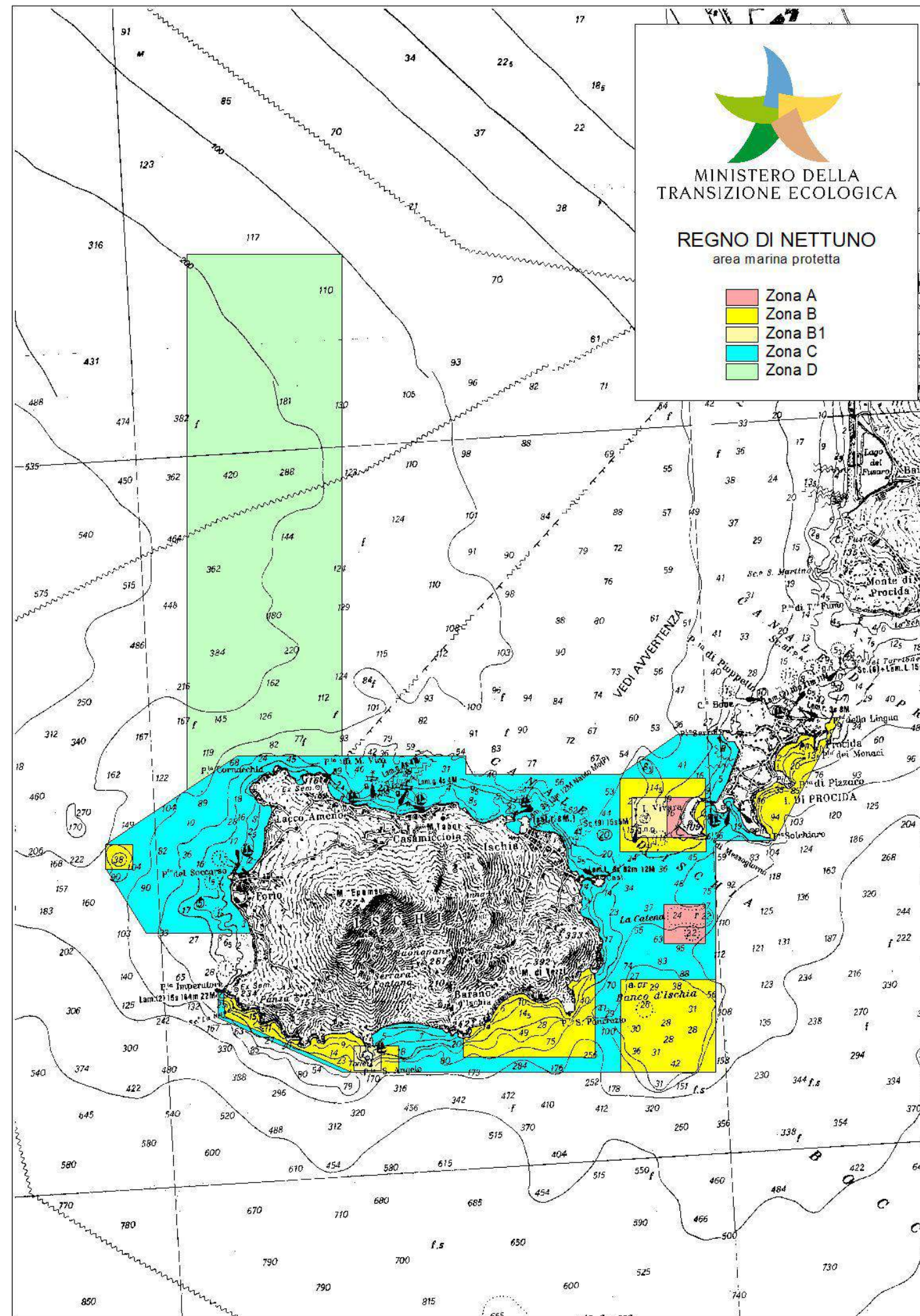
40° 44.397 N - 013° 58.499 E

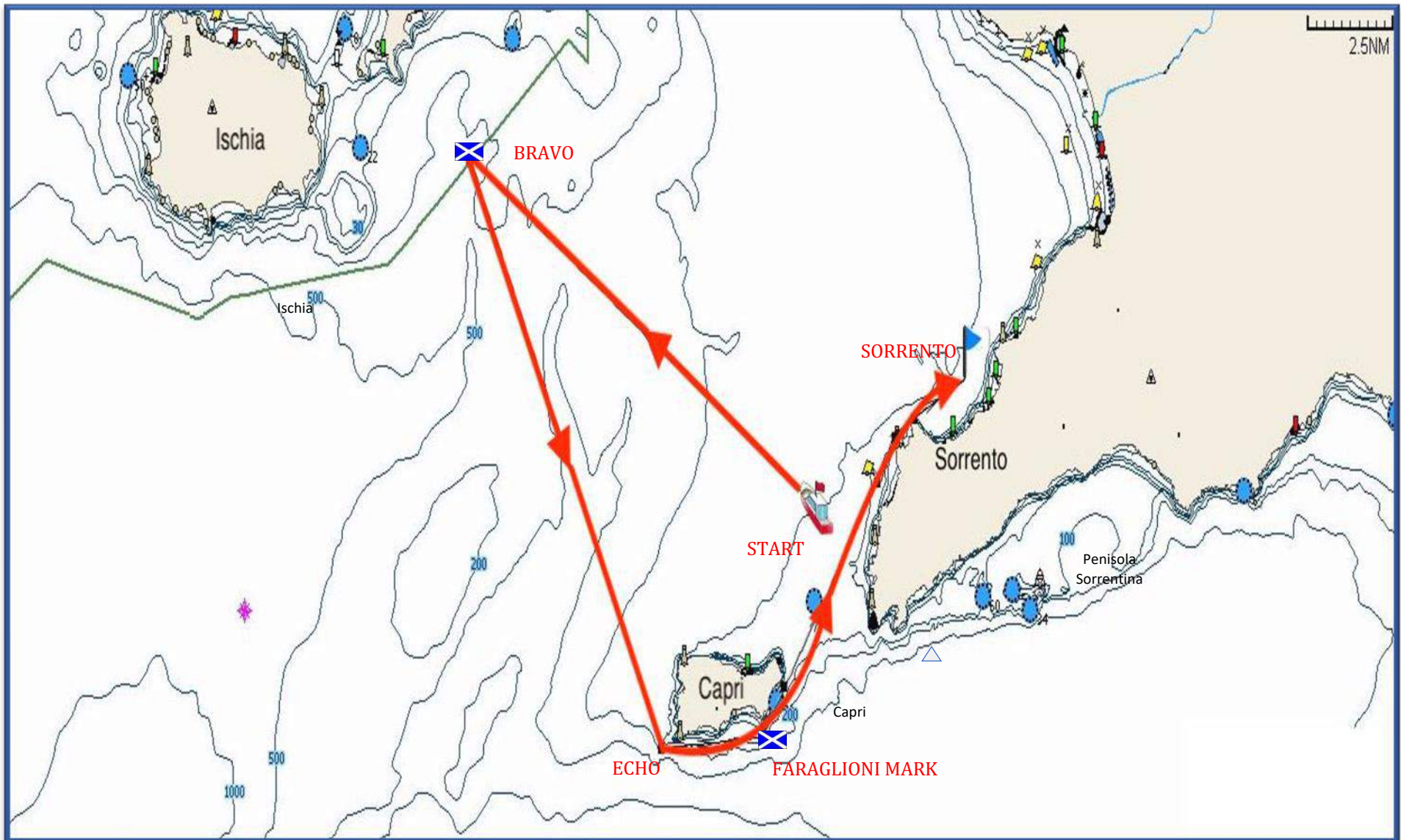
40° 44.897 N - 013° 59.621 E

40° 44.404 N - 013° 59.808 E

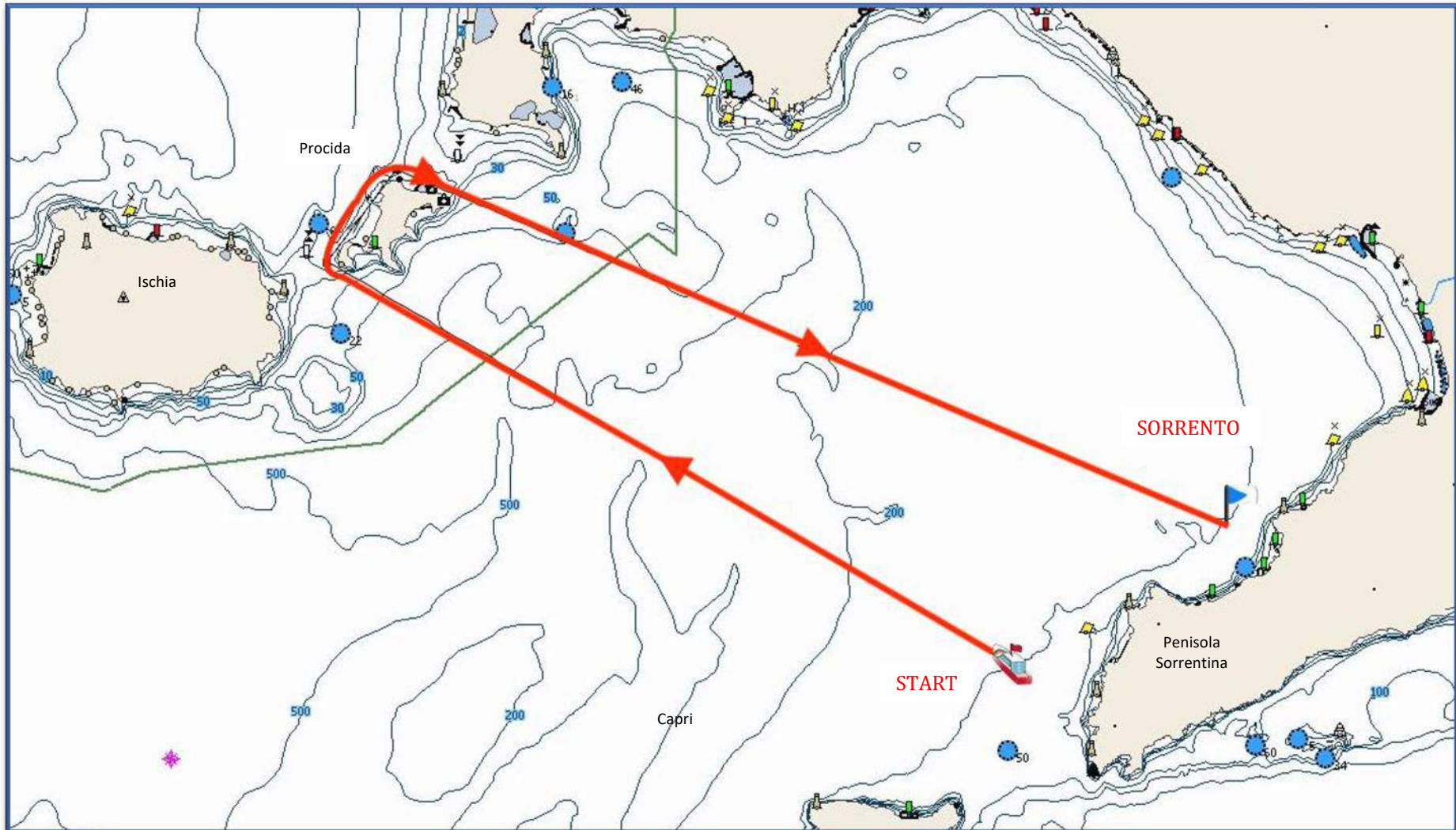
All the details of the restricted areas can also be found at: <https://www.minambiente.it/pagina/area-marina-protetta-punta-campanella> and <https://www.mite.gov.it/pagina/area-marina-protetta-regno-di-nettuno>







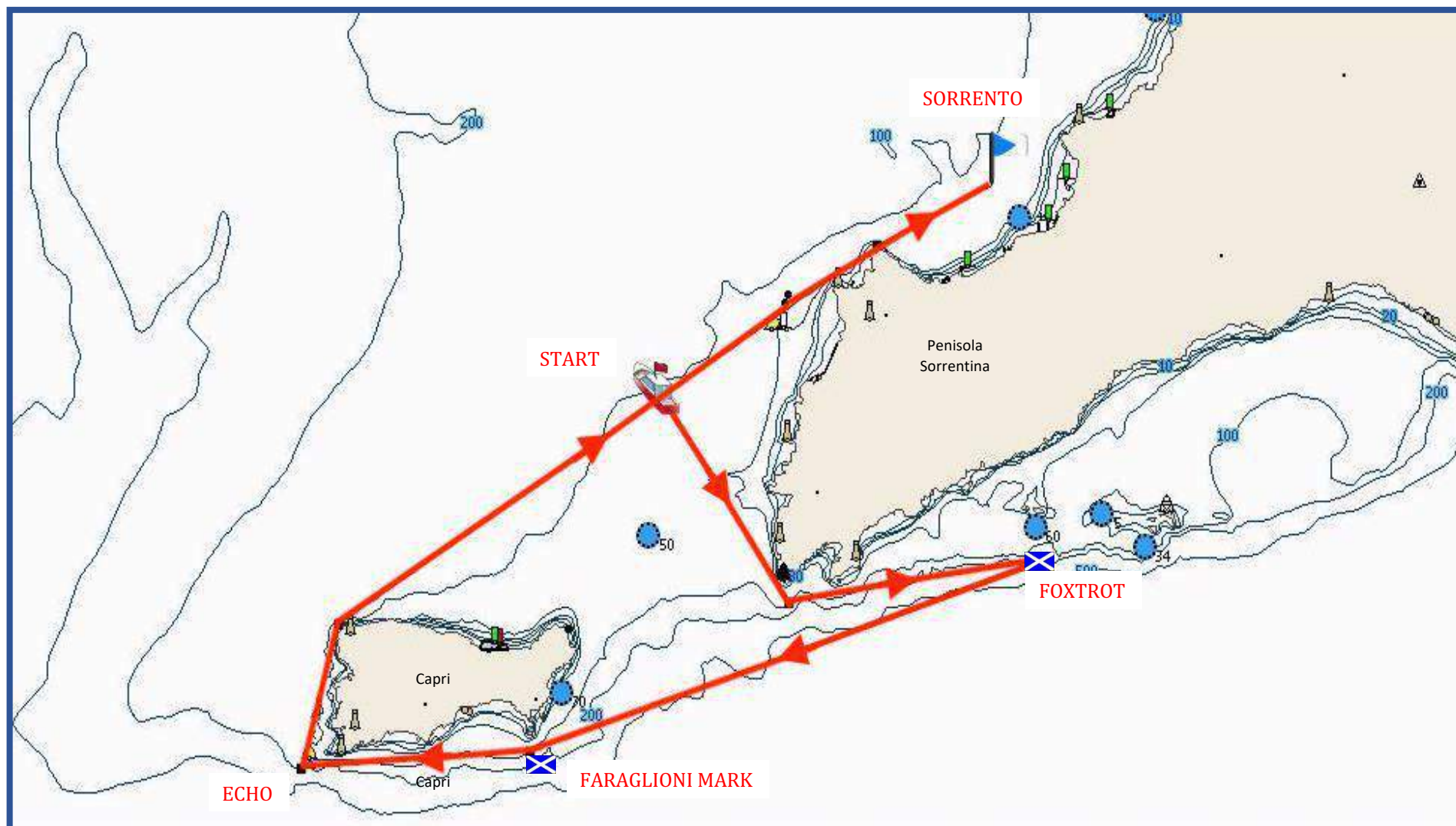
<p>Course 1 - approx. 37 nm START – BRAVO(P) – ECHO(P) – FARAGLIONI MARK(S) – SORRENTO(P)</p>	<p>RESTRICTED AREA SEE PAR. 7.a</p>
--	-------------------------------------



Course 2 - approx. 37 nm

START – Procida Island(S) – SORRENTO(P)

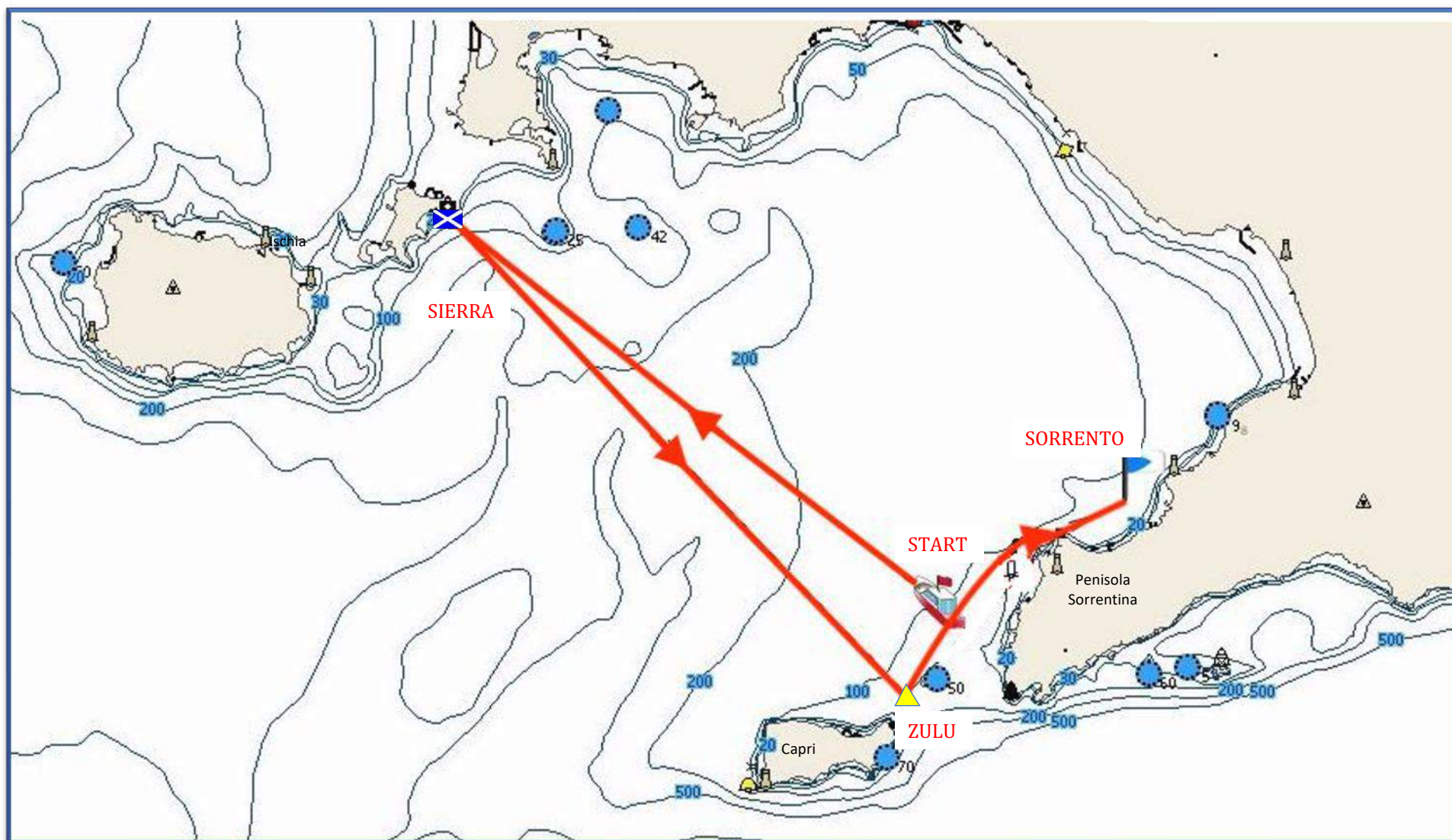
RESTRICTED AREA SEE PAR. 7.c



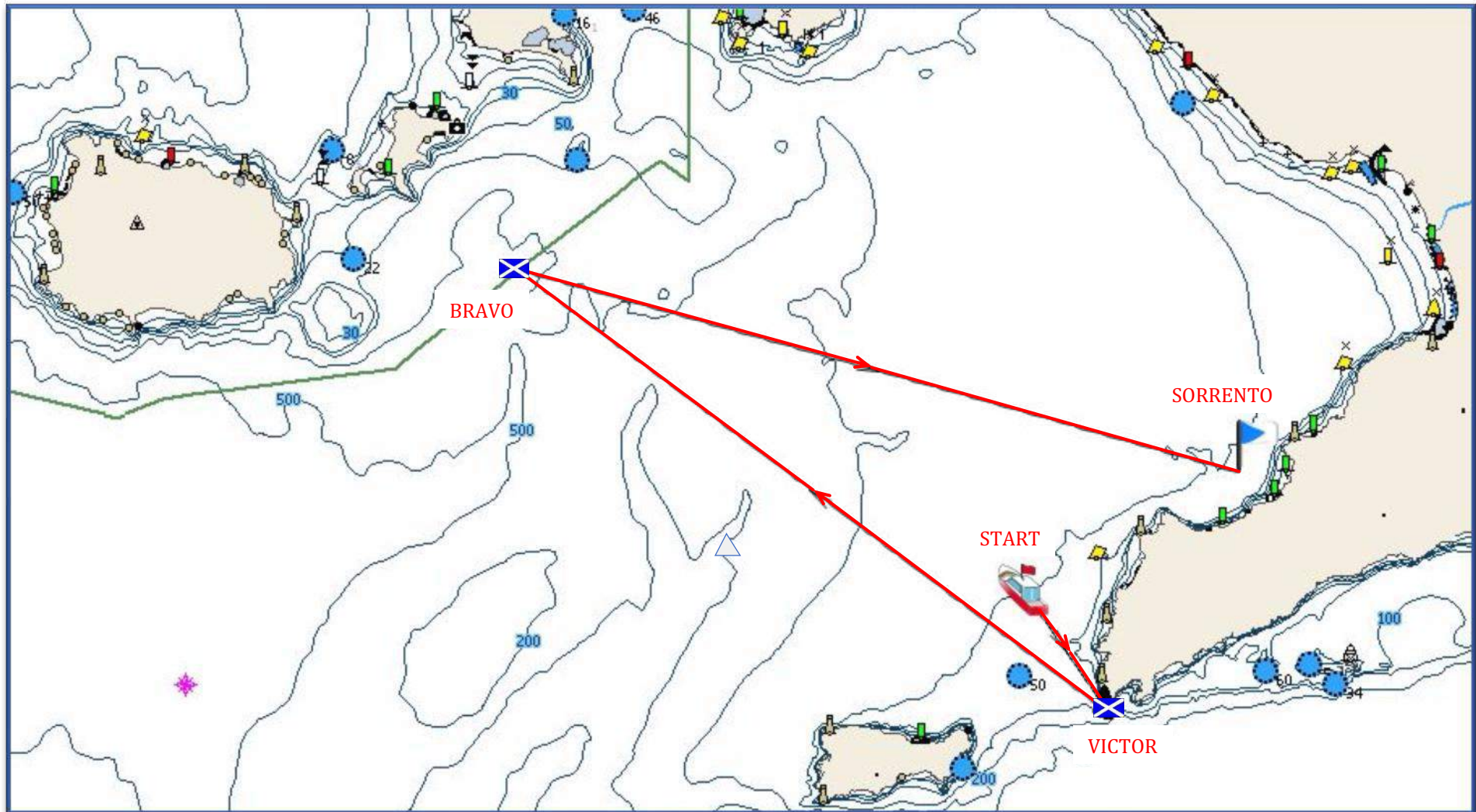
Course 3 - approx. 28 nm

START – FOXTROT(S) – FARAGLIONI MARK(P) – ECHO(S) - SORRENTO (P)

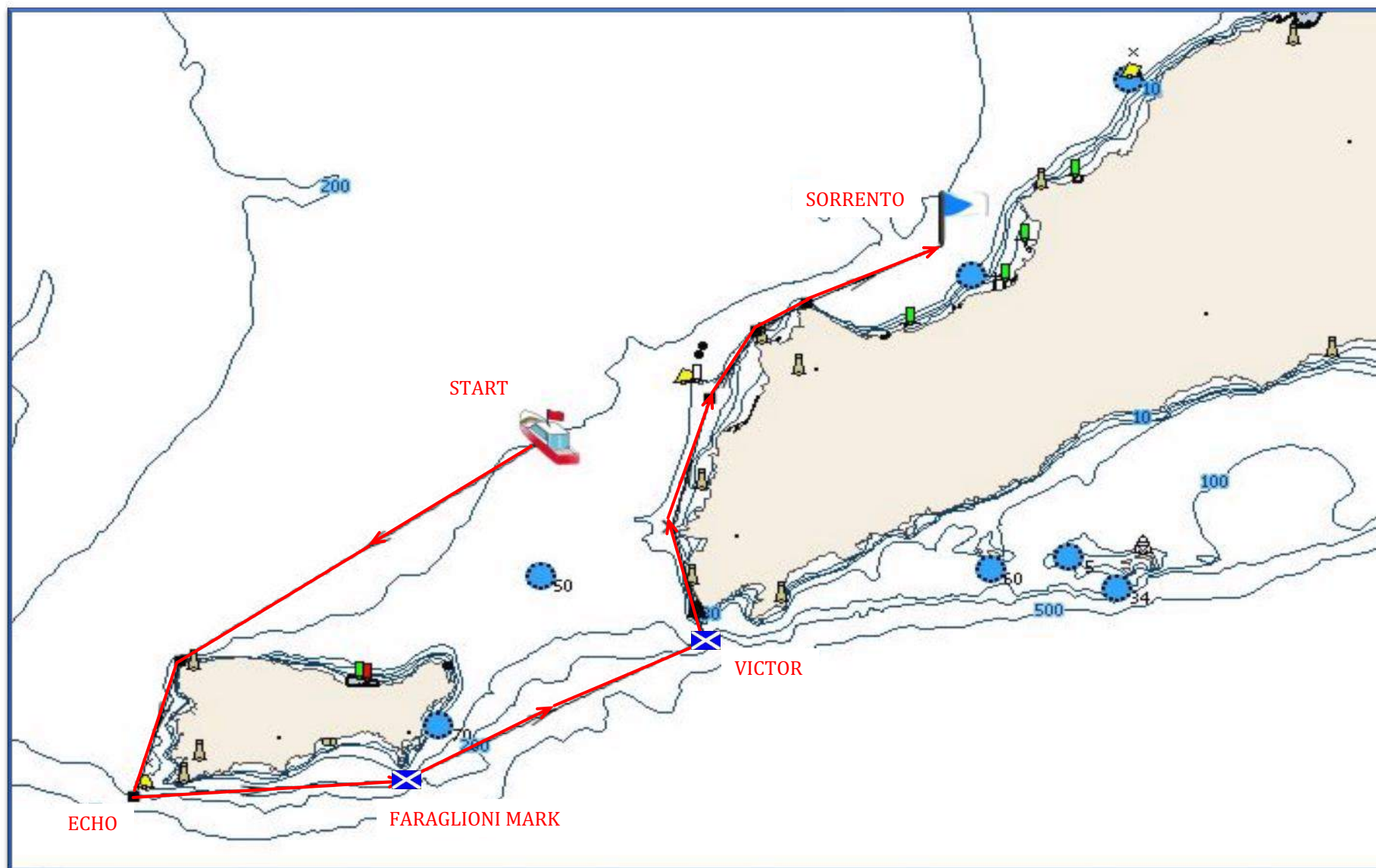
RESTRICTED AREA SEE PAR. 7.a – 7.b



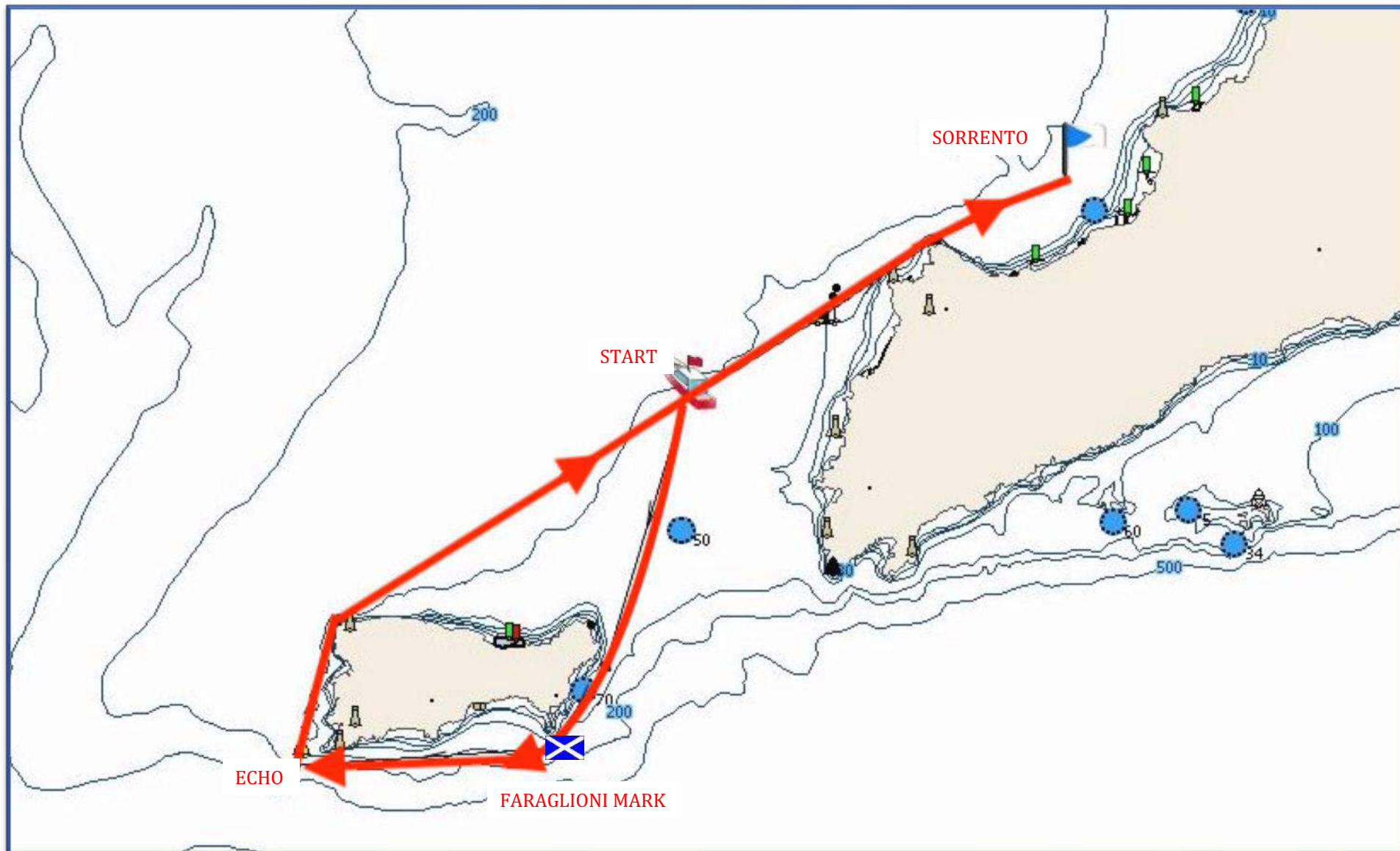
<p>Course 4 - approx. 36 nm START – SIERRA(P) – ZULU(P) – SORRENTO (P)</p>	<p>RESTRICTED AREA SEE PAR. 7.a</p>
---	-------------------------------------



Course 5 - approx. 33 nm
START – VICTOR(S) – BRAVO(S) – SORRENTO(P)

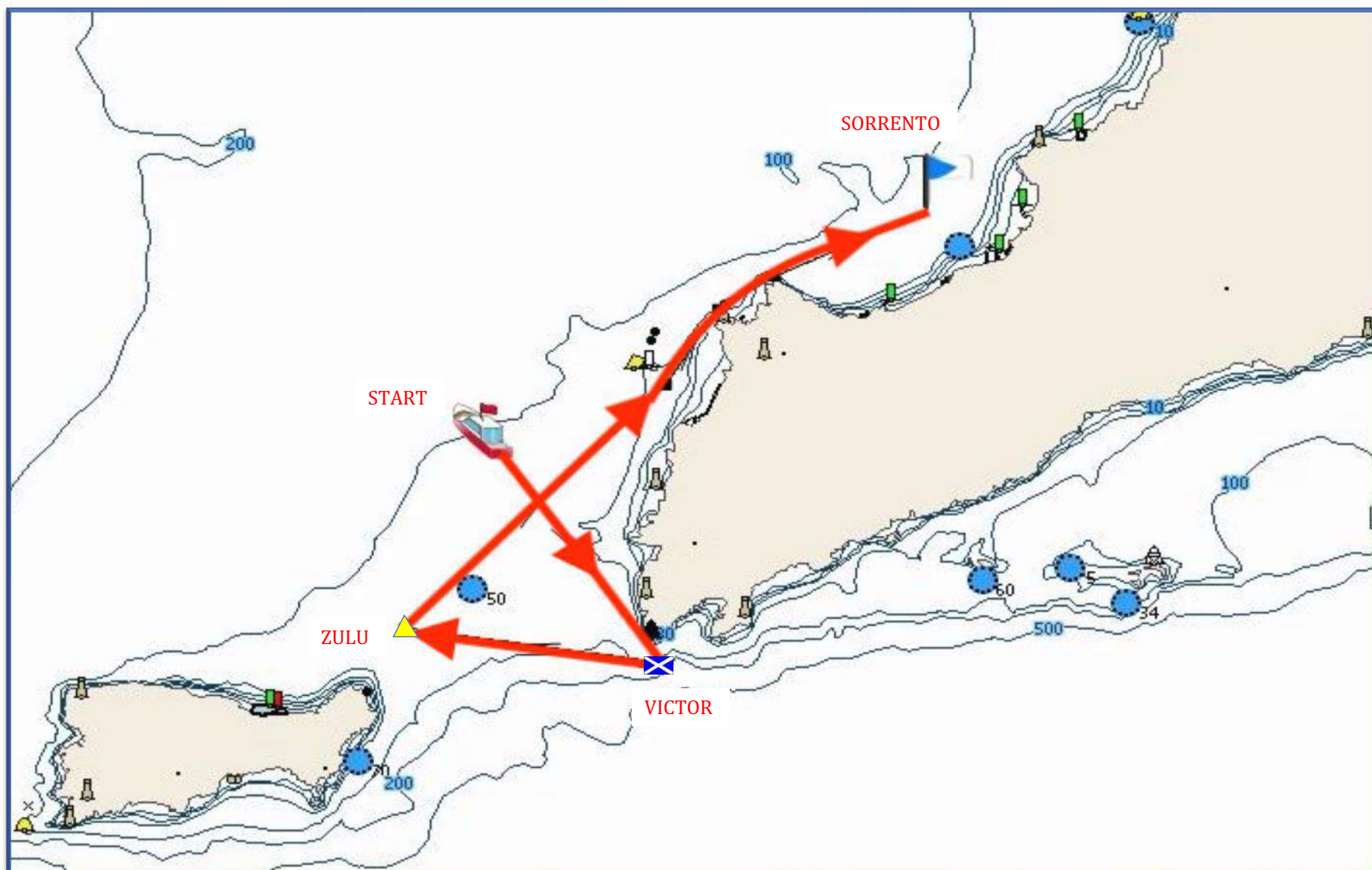


<p>Course 6 - approx. 20 nm START – ECHO(P) – FARAGLIONI MARK(S) – VICTOR(P) – SORRENTO(P)</p>	<p>RESTRICTED AREA SEE PAR. 7.a</p>
---	-------------------------------------

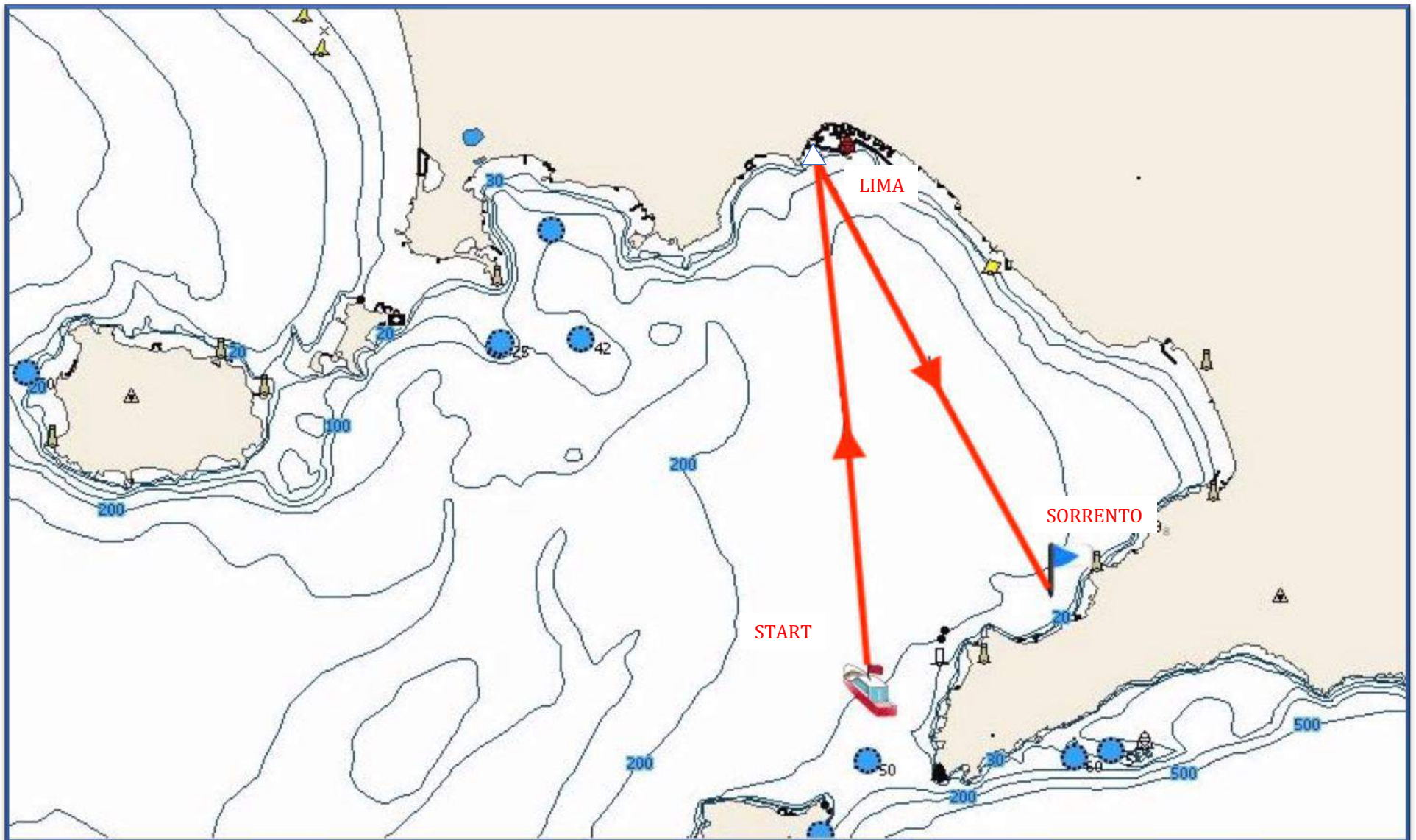


Course 7 - approx. 20 nm
START — FARAGLIONI MARK(P) – ECHO (S) – SORRENTO(P)

RESTRICTED AREA SEE PAR. 7.a

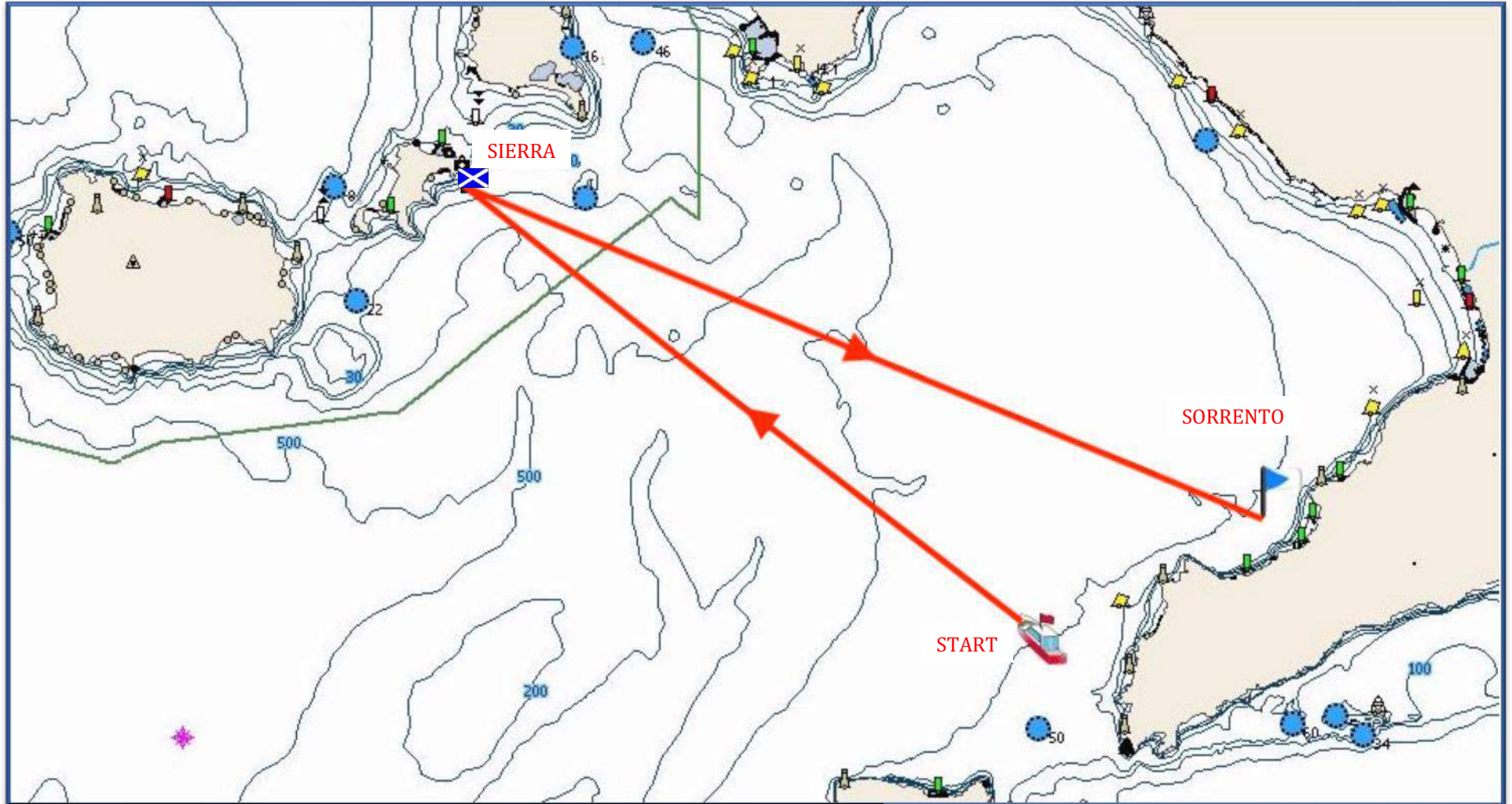


<p>Course 8 - approx. 13 nm START — VICTOR (S) – ZULU (S) – SORRENTO(P)</p>	<p>RESTRICTED AREA SEE PAR. 7.a</p>
--	-------------------------------------

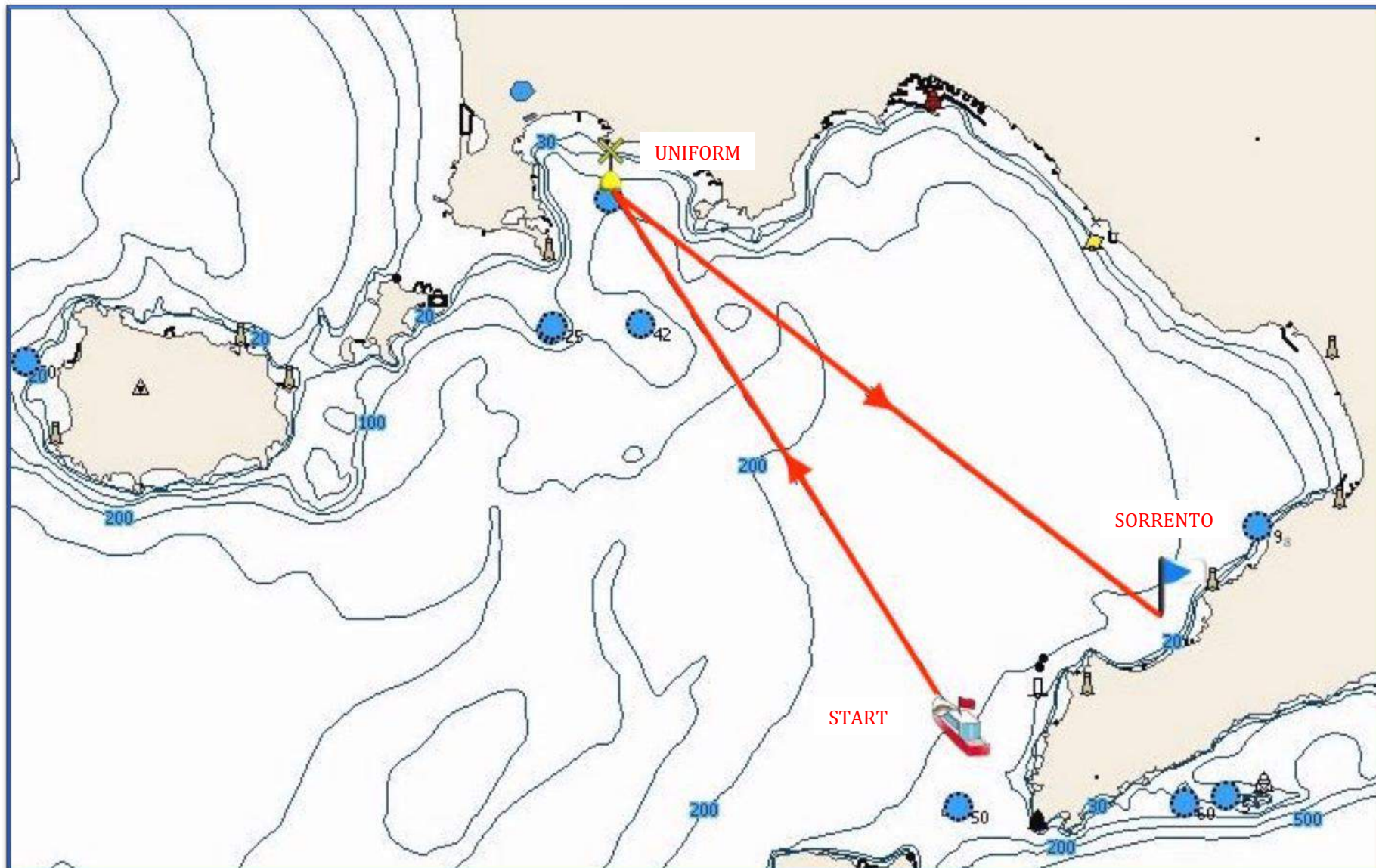


Course 9 - approx. 26 nm

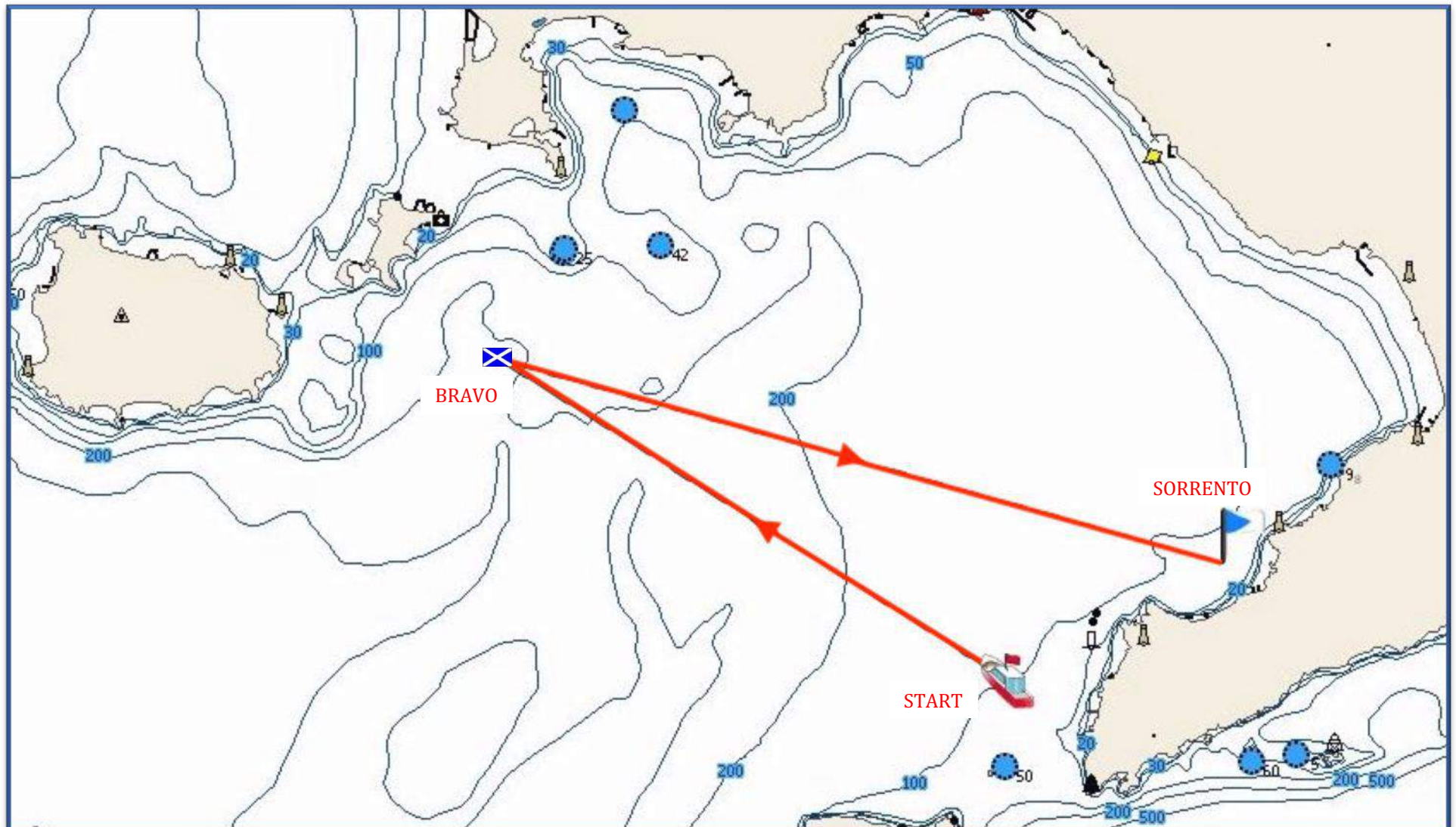
START — LIMA (S) – SORRENTO(P)



Course 10 - approx. 32 nm
START — SIERRA (S) – SORRENTO(P)

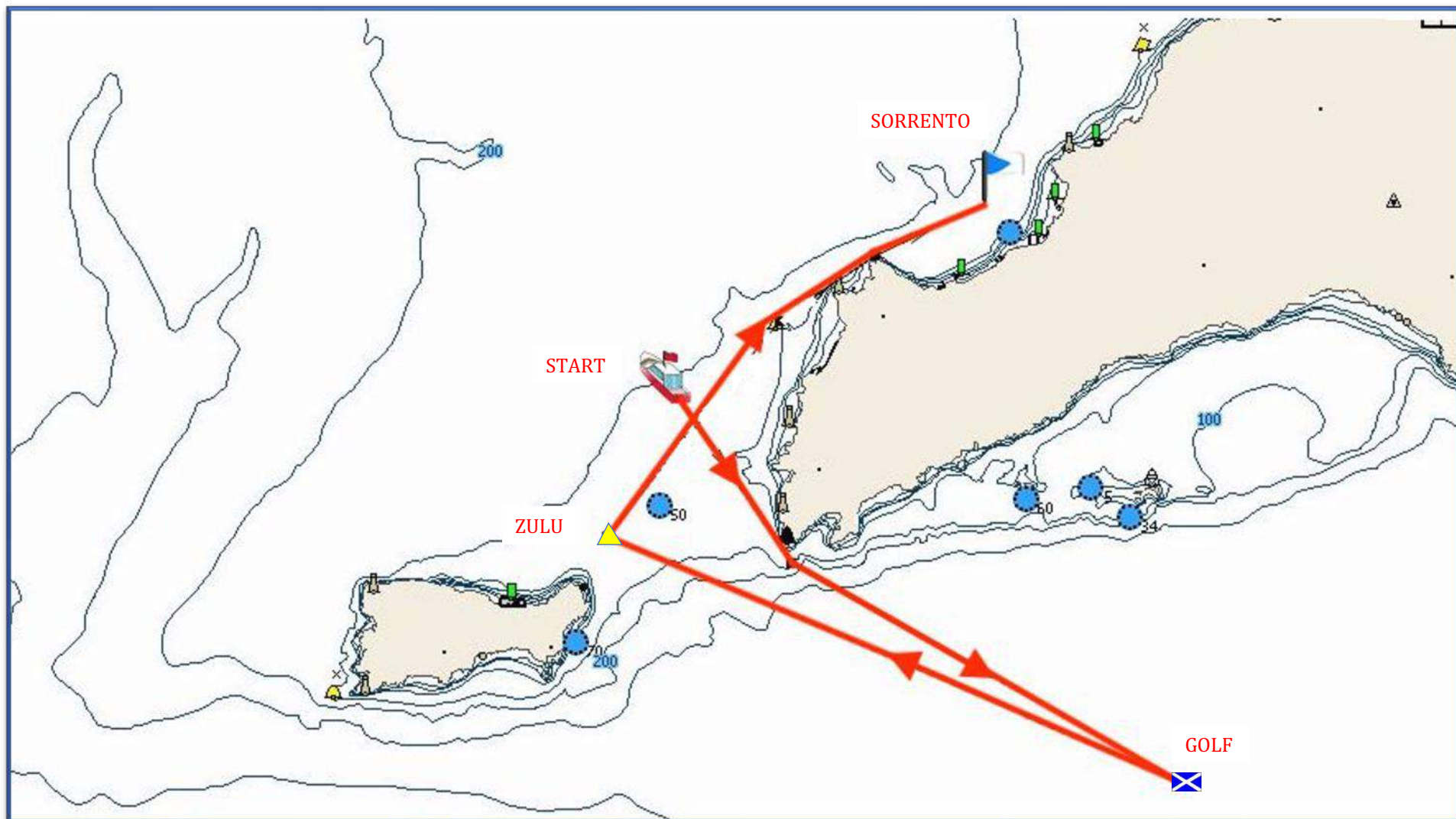


Course 11 - approx. 29 nm
START — UNIFORM(S) – SORRENTO(P)



Course 12 - approx. 27 nm

START — BRAVO(S) – SORRENTO(P)



Course 13 - approx. 25 nm
START — GOLF (S) – ZULU (S) – SORRENTO(P)

RESTRICTED AREA SEE PAR. 7.a