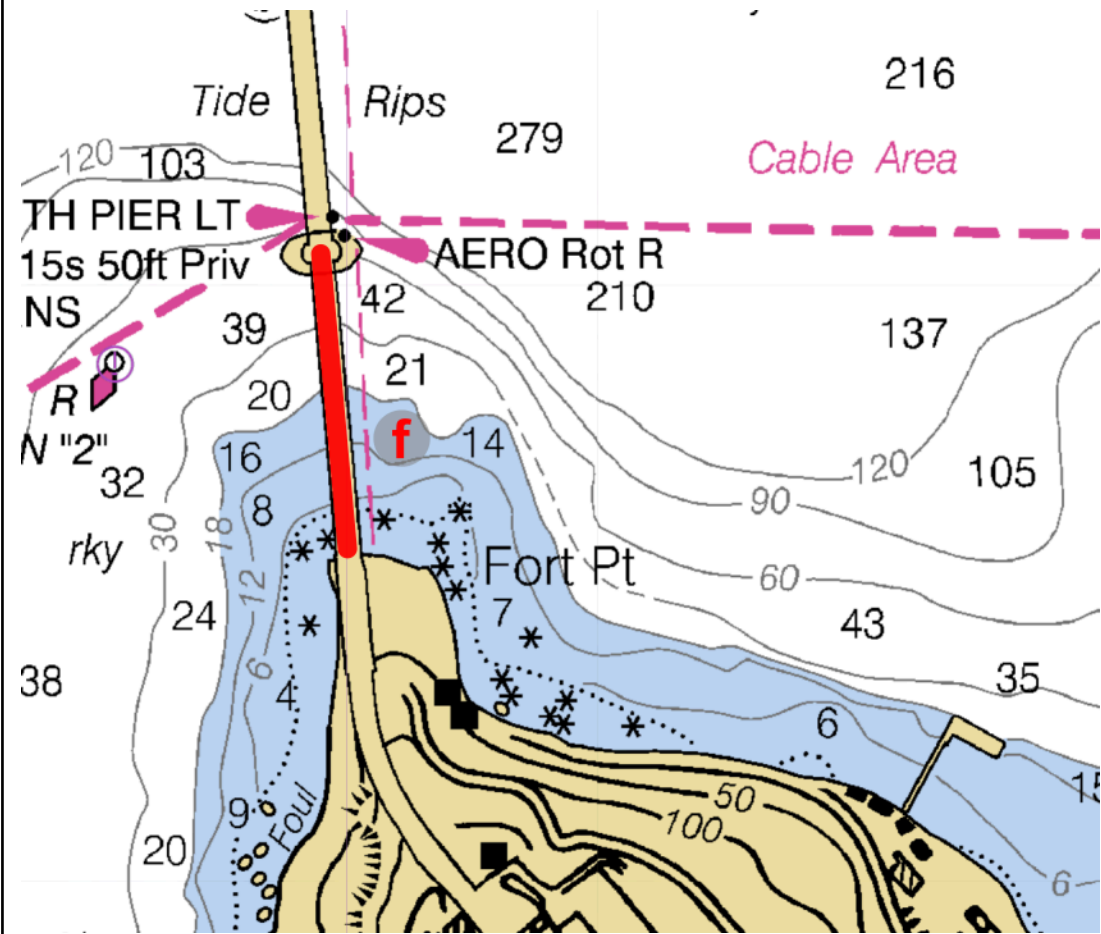


**Addendum  
AREAS THAT ARE OBSTRUCTIONS**

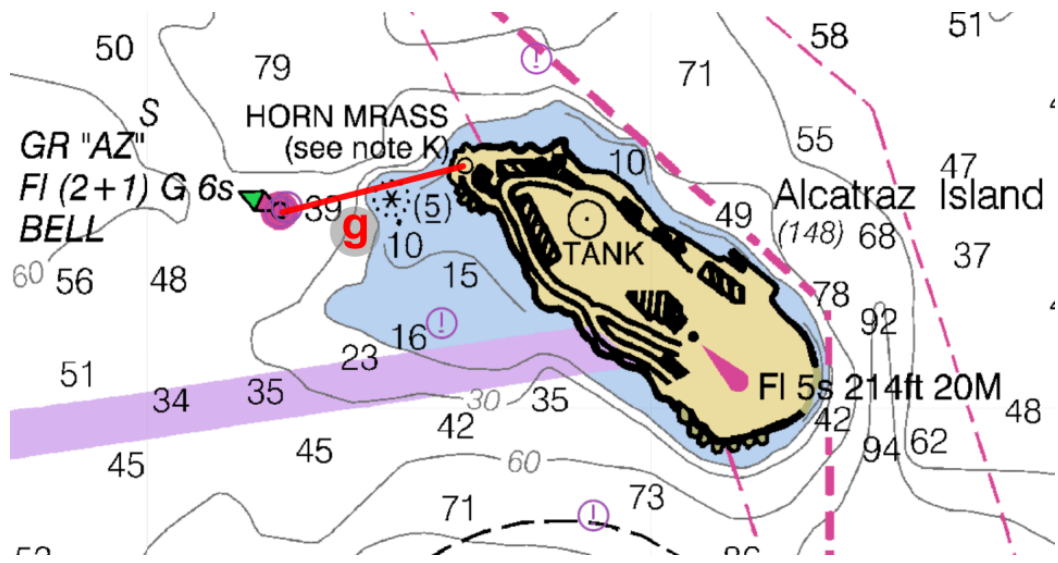
Each line bound by the following two points is designated as an obstruction. Boats are prohibited from crossing any of these lines while racing.

a.	The "H" Beam piling and the closest point ashore (located approximately 200 yards west of the St. Francis YC)
b.	Anita Rock Light located approximately 0.30nm west of StFYC ("Anita Rock" Q 20ft 5M) and the closest point ashore; Yellow buoy "ARo"
c.	Yellow buoy "ARo" (located approximately 45 yards at 350 degrees from Anita Rock Light) and the closest point ashore;
d.	Anita Rock Light and "ARo" as defined above;
e.	StFYC inner mark "B" and the closest point ashore.

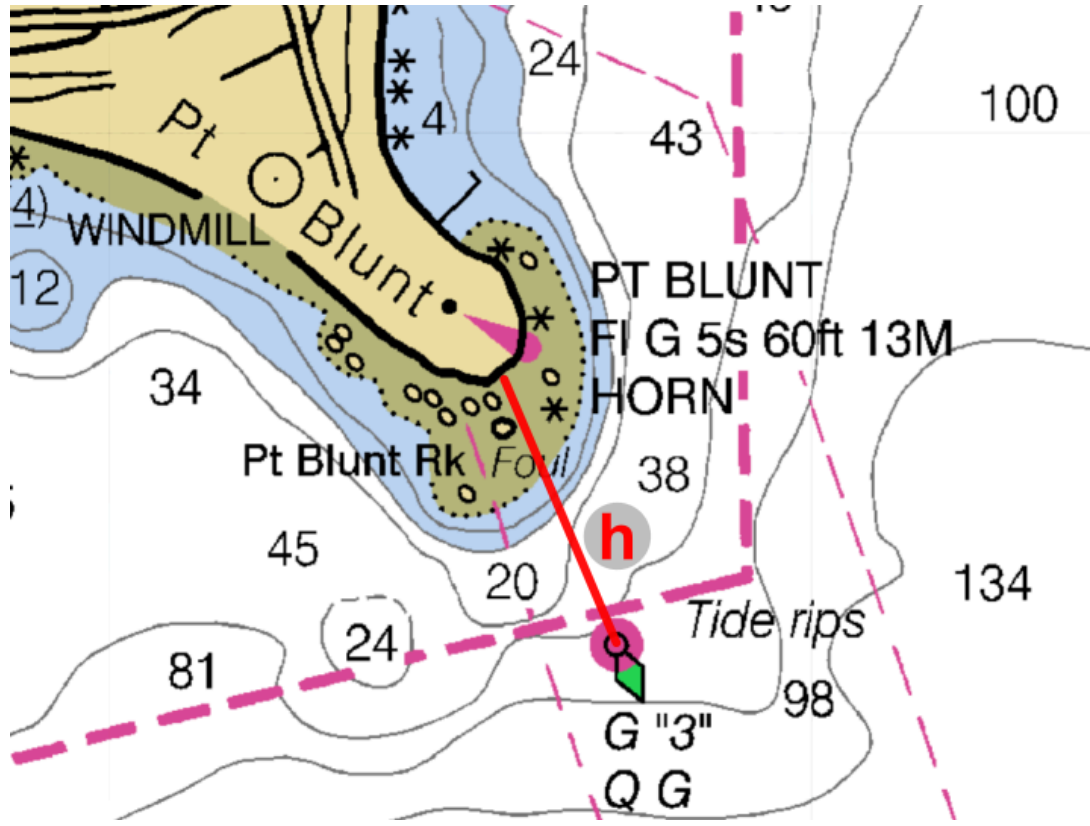
f. The South Tower of the Golden Gate Bridge and the closest point ashore.



g. The Green/Red Bell Buoy off the West end of Alcatraz Island and Alcatraz Island.



h. The Green Buoy (G“3”) South of Point Blunt-Angel Island and the closest point ashore.



- i. If set: A white temporary buoy off of Pier 39 and the end of Pier 39.
- j. If set: A white temporary buoy off of Pier 43-1/2 and the end of Pier 43-1/2.
- k. If set: The white temporary buoy off of Pier 39 mentioned in (i) and the white temporary buoy off of Pier 43-1/2 mentioned in (j).
- l. If set: The northeastern most corner of Pier 45 and FI R 2.5s “2” on the easternmost end of the Aquatic Park breakwater.