

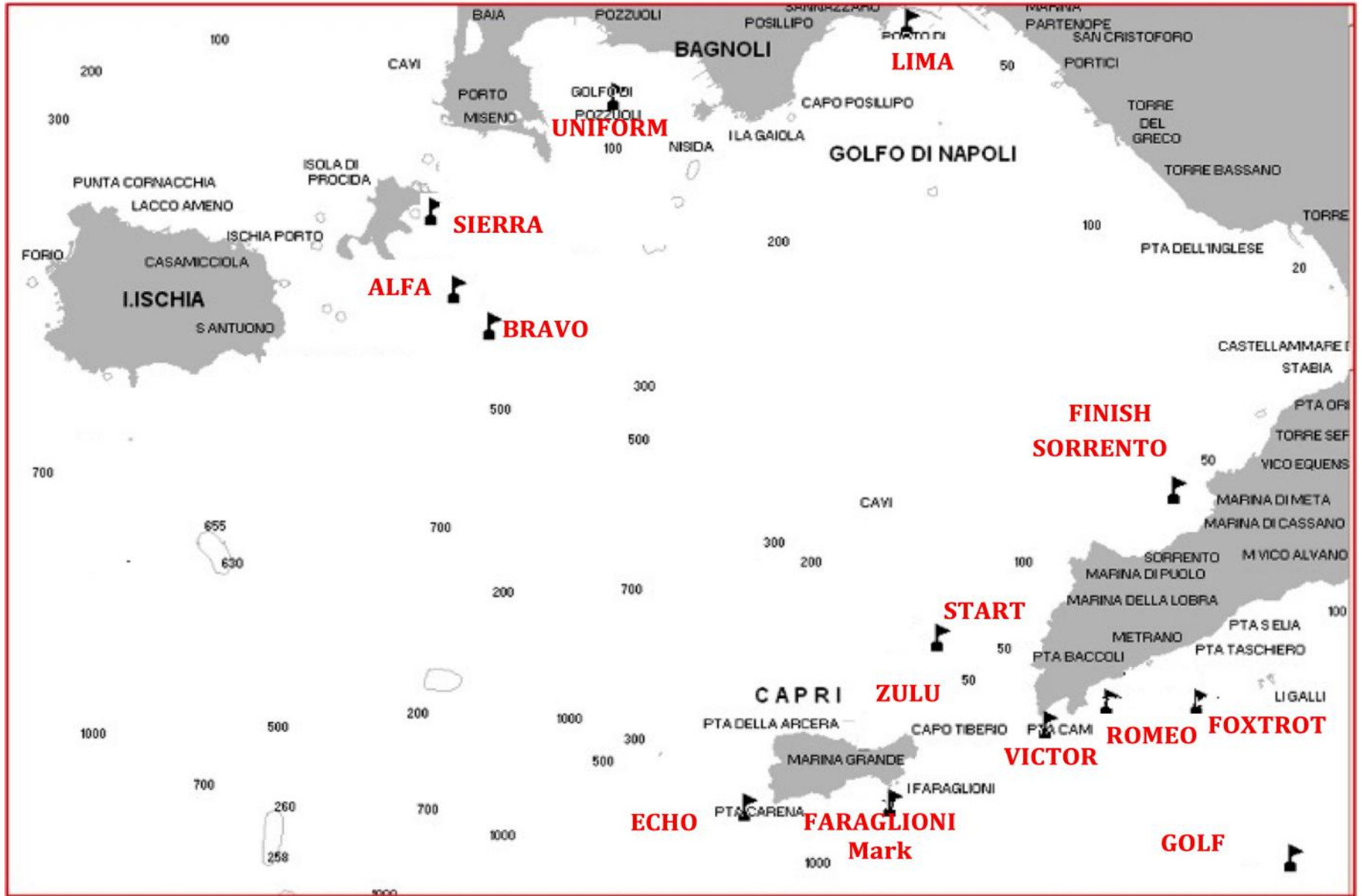
**2024 TRE GOLFI SAILING WEEK**



**IMA MAXI EUROPEAN CHAMPIONSHIP**

**SAILING INSTRUCTIONS**

**COASTAL COURSES BOOKLET**



## 1. WAYPOINT LIST

WPT NAME	LAT. N	LONG. E	
ALFA	40° 43.400	014° 03.000	
<b>BRAVO</b>	<b>40° 42.900</b>	<b>014° 03.750</b>	
ECHO	40° 32.165	014° 11.813	Lighthouse at Punta Carena
<b>FARAGLIONI MARK</b>	<b>40° 32.150</b>	<b>014° 15.170</b>	
FARAGLIONI ROCKS	40° 32.375	014° 15.170	
<b>FOXTROT</b>	<b>40° 34.400</b>	<b>014° 23.900</b>	
GOLF	40° 30.900	014° 26.600	
<b>LIMA</b>	<b>40° 49.745</b>	<b>014° 15.631</b>	<b>White pyramidal inflatable buoy</b>
ROMEO	40° 34.000	014° 21.350	
<b>SIERRA</b>	<b>40° 45.300</b>	<b>014° 02.310</b>	
SORRENTO	40° 39.200	014° 23.000	
<b>UNIFORM</b>	<b>40° 48.069</b>	<b>014° 07.257</b>	
VICTOR	40° 33.950	014° 19.300	
<b>ZULU</b>	<b>40° 34.270</b>	<b>014° 16.300</b>	

All the Lat. Long. are approximate.

## 2. MARK DESCRIPTION

- a) “SORRENTO” and “LIMA” marks are white pyramidal inflatable buoys with a sponsor logo.
- b) “UNIFORM” Mark is a yellow beacon with an X-shape on top.
- c) All the other marks in the different courses may be:
  - 1) a service boat or,
  - 2) a robotic inflatable pyramid mark,
  - 3) yellow pyramidal inflatable buoy,
- d) The service boat will display flag “M” (Mike).

## 3. COURSE KEY

- (S) after the name of mark means that mark is to be rounded to starboard.  
(P) after the name of mark means that mark is to be rounded to port.

## 4. POSSIBLE WINDWARD MARK

A windward mark may be set at about 1 to 5 NM from the starting line. The RC, before the warning signal, will display bearing and distance to the mark along with a green or red flag signalling that the mark shall be left to starboard or to port, respectively.

## 5. FINISHING LINE

- a) The finishing line will be a straight line between the course side of the finishing mark and the staff on the RC vessel displaying a Blue flag.

## 6. CUSTOM COURSE 00

The RC may create a custom course that is not described in the SI Coastal Course Booklet. The RC shall announce the marks and course on VHF 72 no later than 30 minutes prior to the warning signal.



## 7. RESTRICTED AREAS

A boat racing shall neither enter nor sail in the exclusion zones listed in 7.a, 7.b, 7.c and 7.d also defined in the “dm\_13\_06\_2000 and dm\_27-12-2007” (see attached map on the next page)

a) The restricted area of “Scoglio del Vervece” is delimited by:

B	40° 37.365 N - 014° 19.624 E
BC	40° 36.925 N - 014° 19.671 E
BA	40° 37.019 N - 014° 19.394 E
BB	40° 37.207 N - 014° 19.390 E

b) The restricted area of “Scoglio di Vetara” is delimited by:

M	40° 35.183 N - 014° 25.222 E
W	40° 34.811 N - 014° 24.971 E
X	40° 35.134 N - 014° 23.464 E
U	40° 34.754 N - 014° 23.469 E

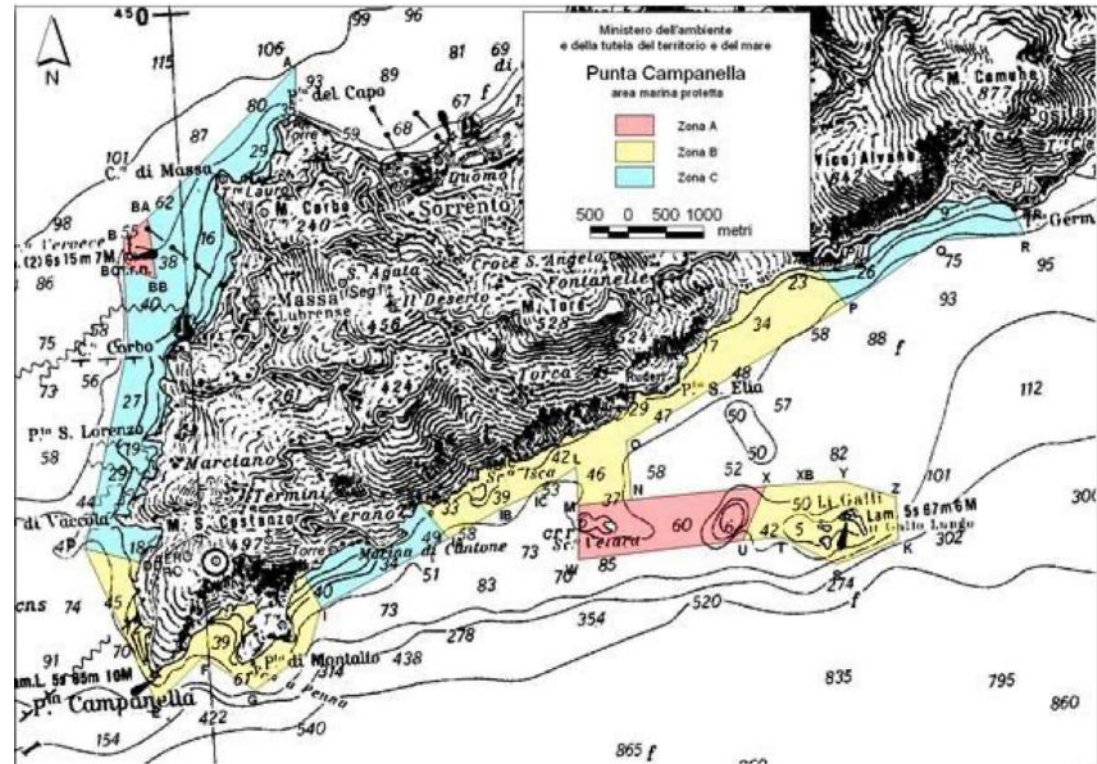
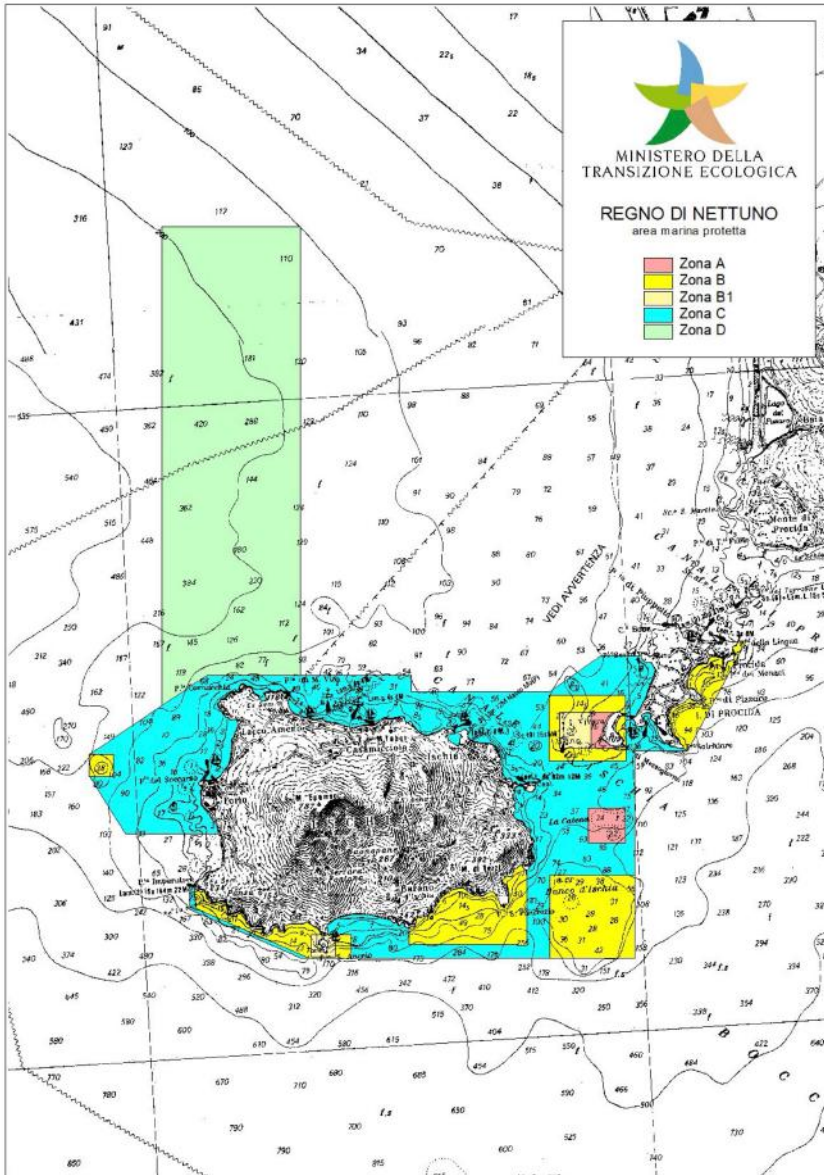
c) The restricted area of “Regno di Nettuno” is delimited by:

40° 44.895 N - 013° 59.201 E
40° 44.397 N - 013° 59.199 E
40° 44.404 N - 013° 59.808 E
40° 44.897 N - 013° 59.621 E

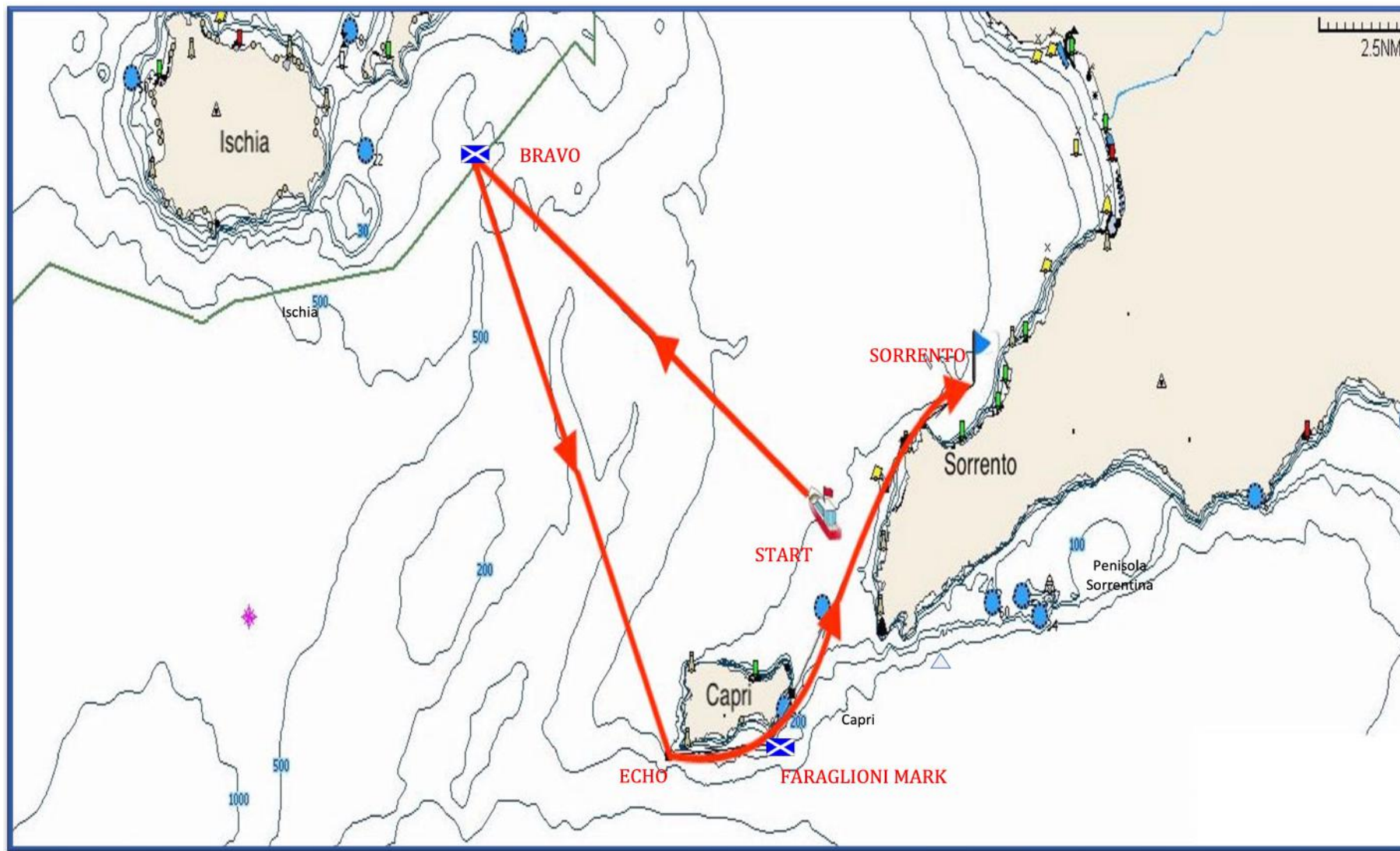
d) The restricted area of “La Catena” is delimited by:

40° 43.500 N - 013° 58.990 E
40° 43.500 N - 013° 59.730 E
40° 42.900 N - 013° 58.990 E
40° 42.900 N - 013° 59.730 E
40° 44.404 N - 013° 59.808 E

All the details of the restricted areas can also be found at: <https://www.minambiente.it/pagina/area-marina-protetta-punta-campanella> and <https://www.mite.gov.it/pagina/area-marina-protetta-regno-di-nettuno>



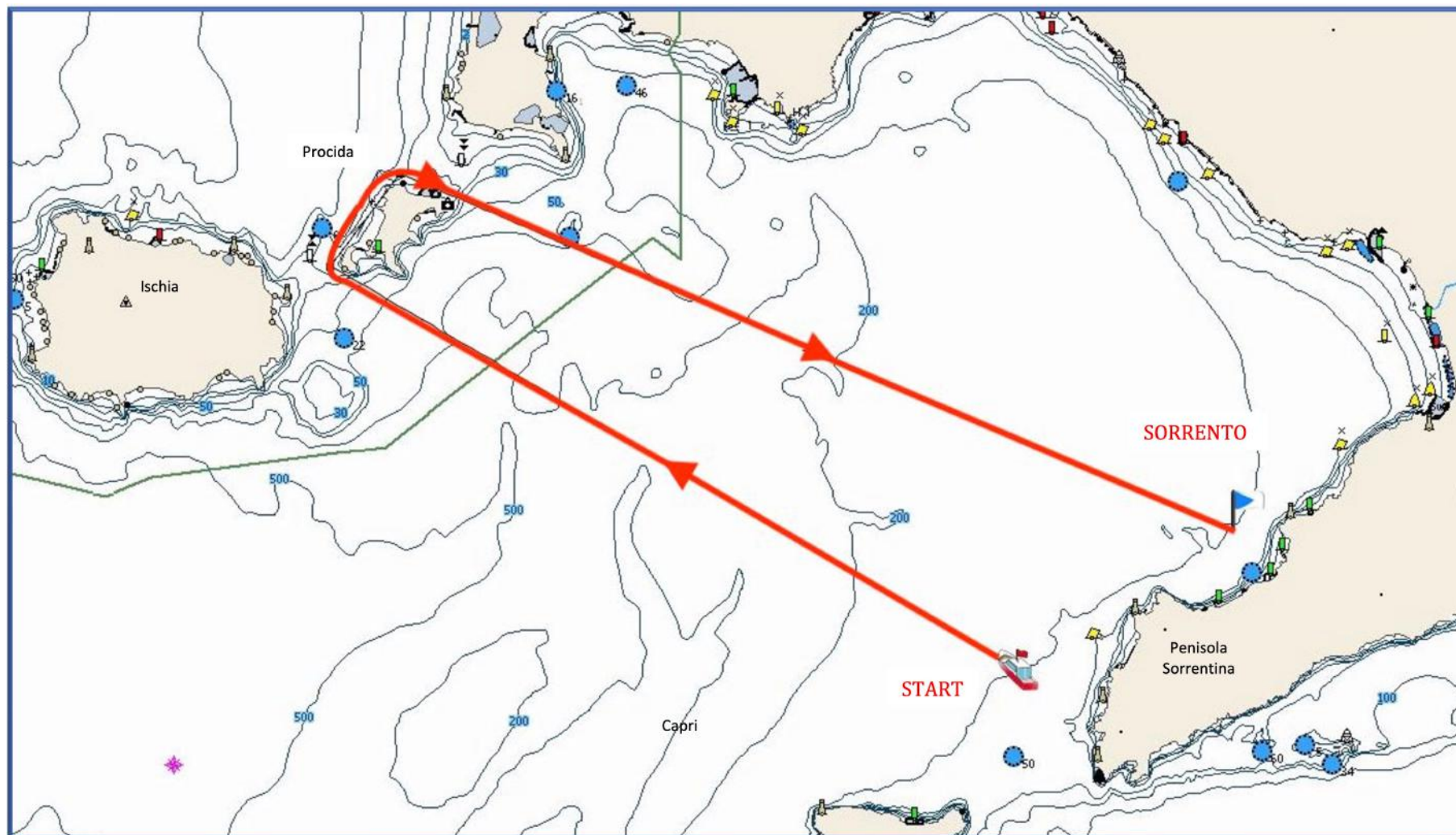




**Course 1** - approx. 37 nm

START – BRAVO(P) – ECHO(P) – FARAGLIONI MARK(S) – SORRENTO(P)

RESTRICTED AREA SEE PAR. 7.a

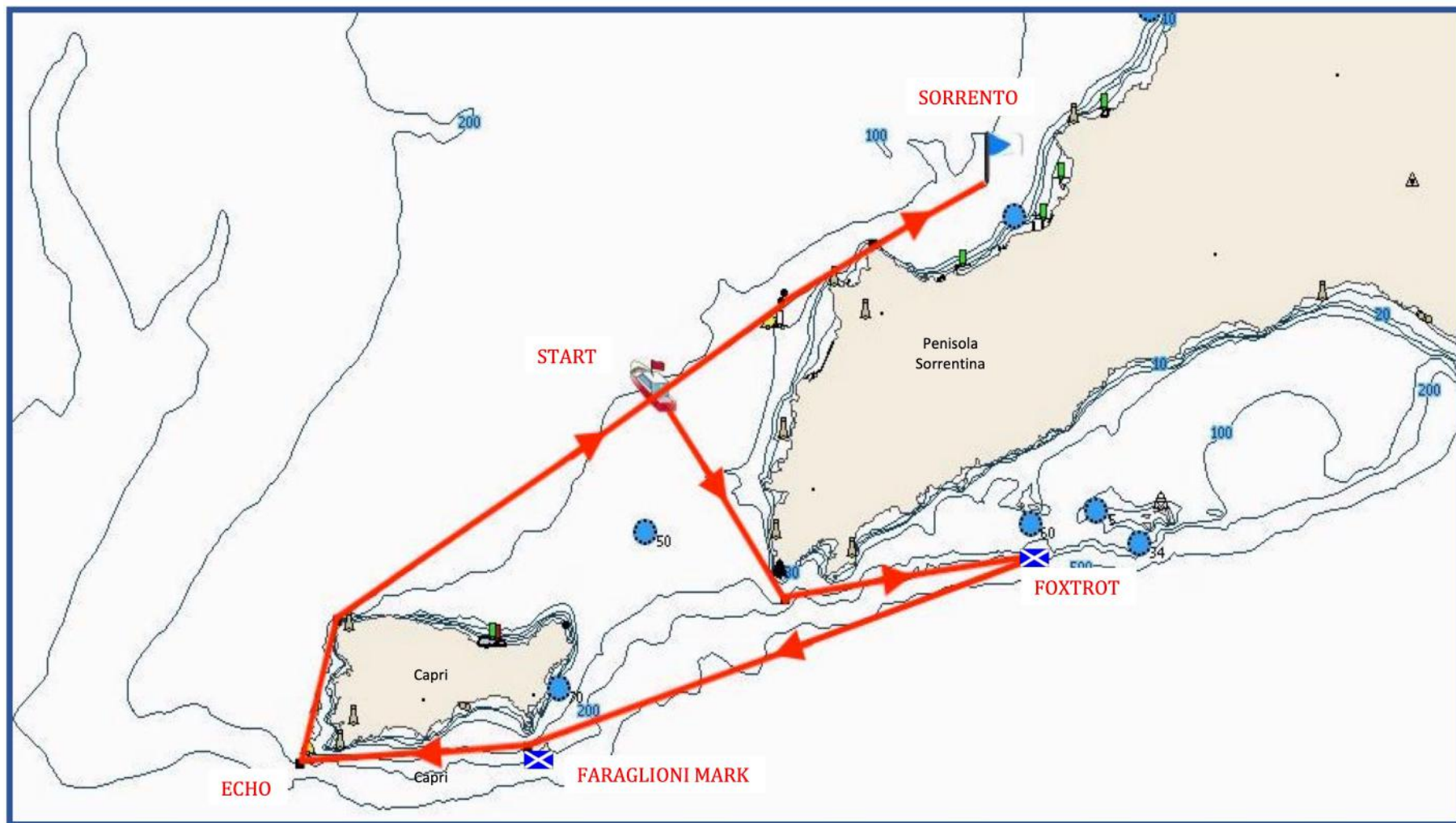


**Course 2** - approx. 37 nm

START – Procida Island(S) – SORRENTO(P)

RESTRICTED AREA SEE PAR. 7.c 7.d

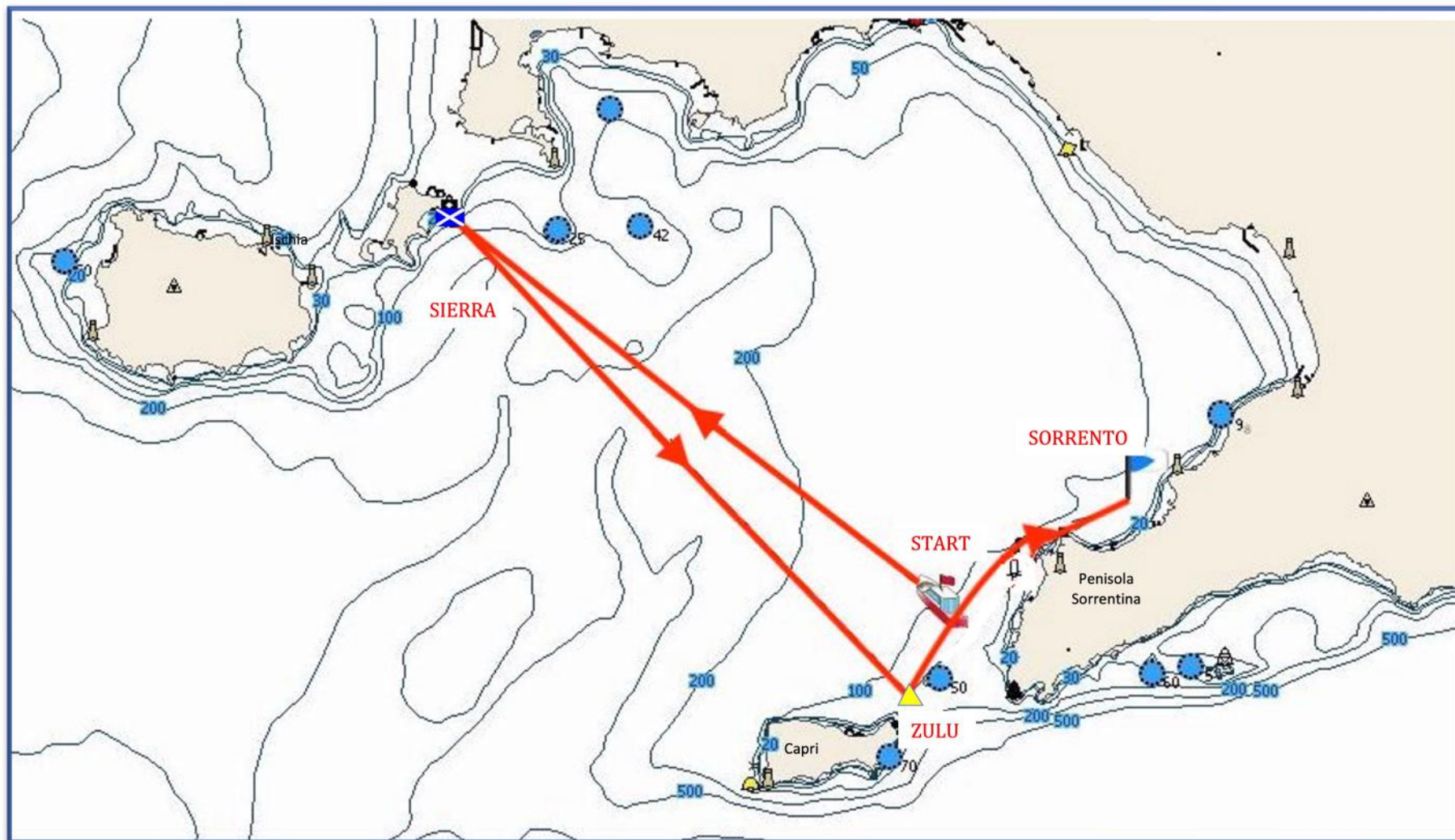




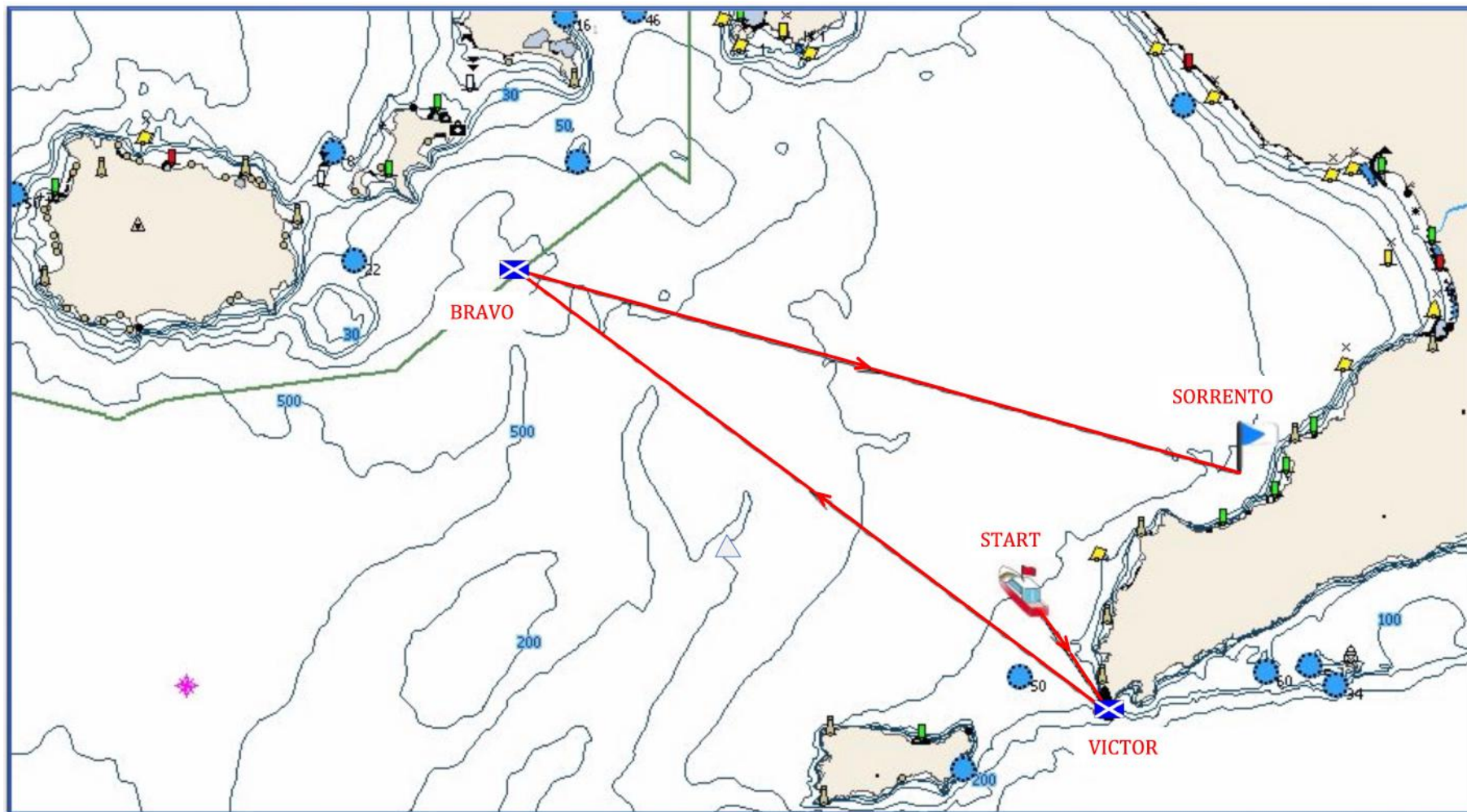
**Course 3** - approx. 28 nm

START – FOXTROT(S) – FARAGLIONI MARK(P) – ECHO(S) - SORRENTO (P)

RESTRICTED AREA SEE PAR. 7.a – 7.b

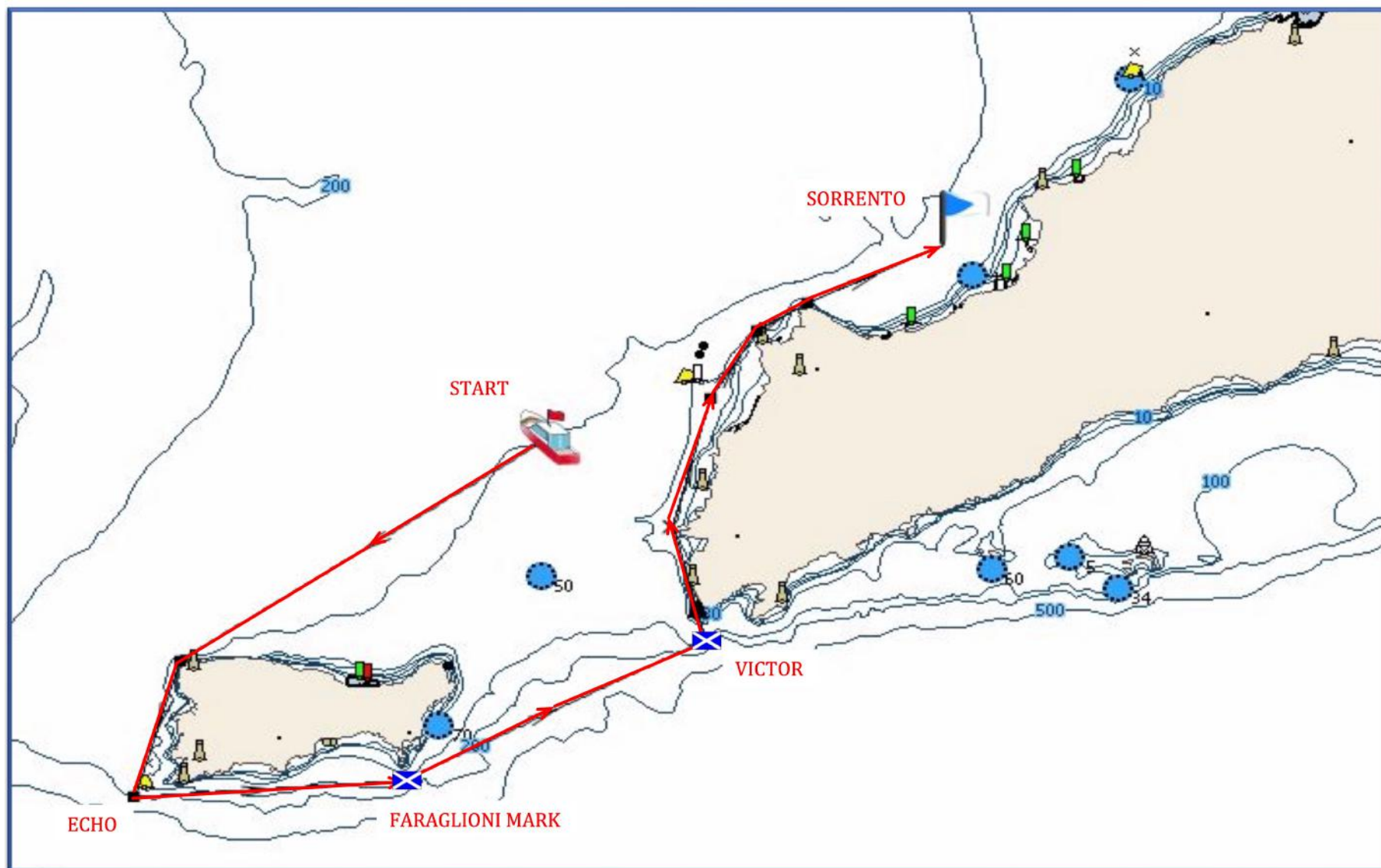


<p><b>Course 4</b> - approx. 36 nm START – SIERRA(P) – ZULU(P) – SORRENTO (P)</p>	<p>RESTRICTED AREA SEE PAR. 7.a</p>
---	-------------------------------------



**Course 5** - approx. 33 nm  
START – VICTOR(S) – BRAVO(S) – SORRENTO(P)

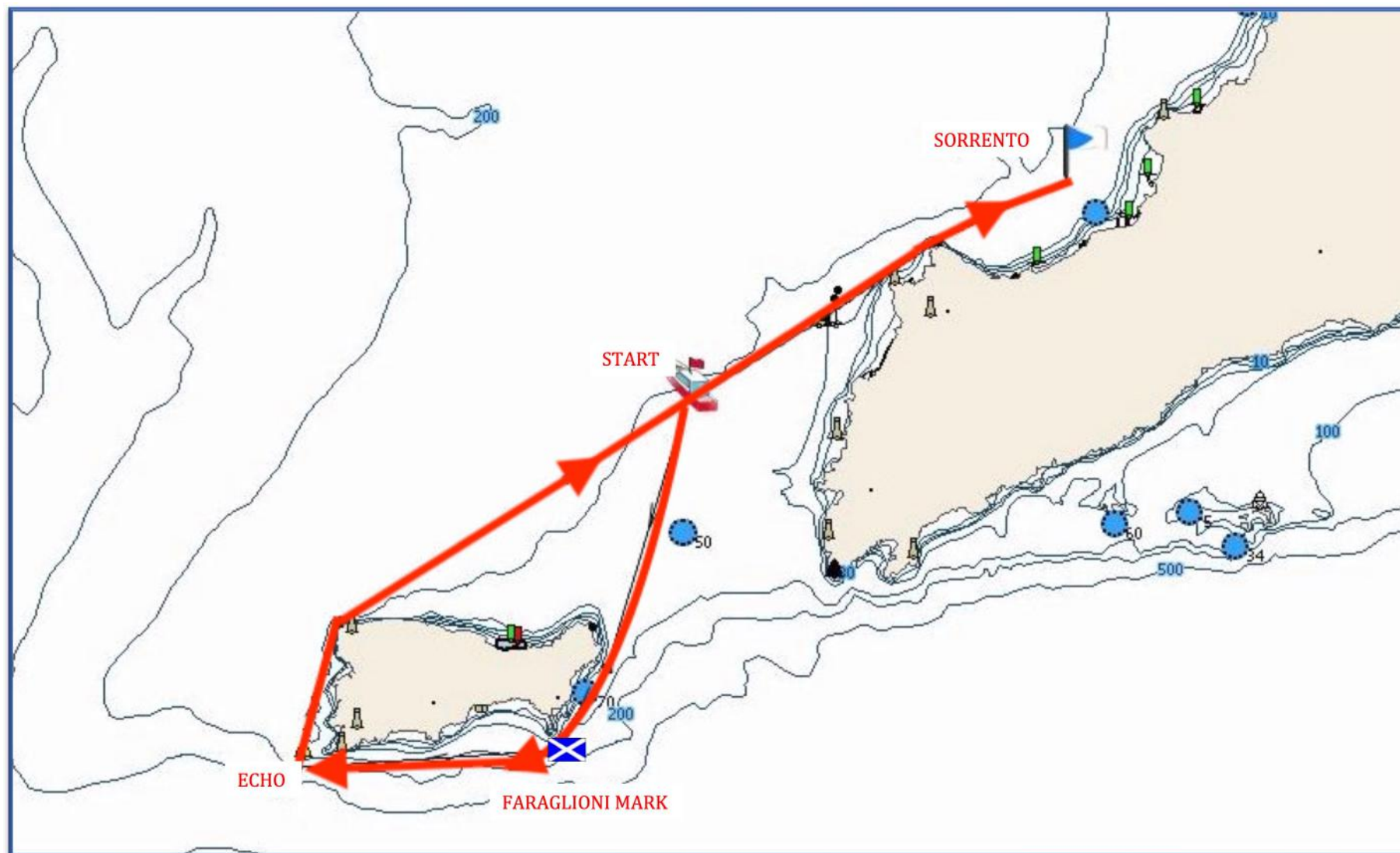




**Course 6** - approx. 20 nm

START – ECHO(P) – FARAGLIONI MARK(S) – VICTOR(P) – SORRENTO(P)

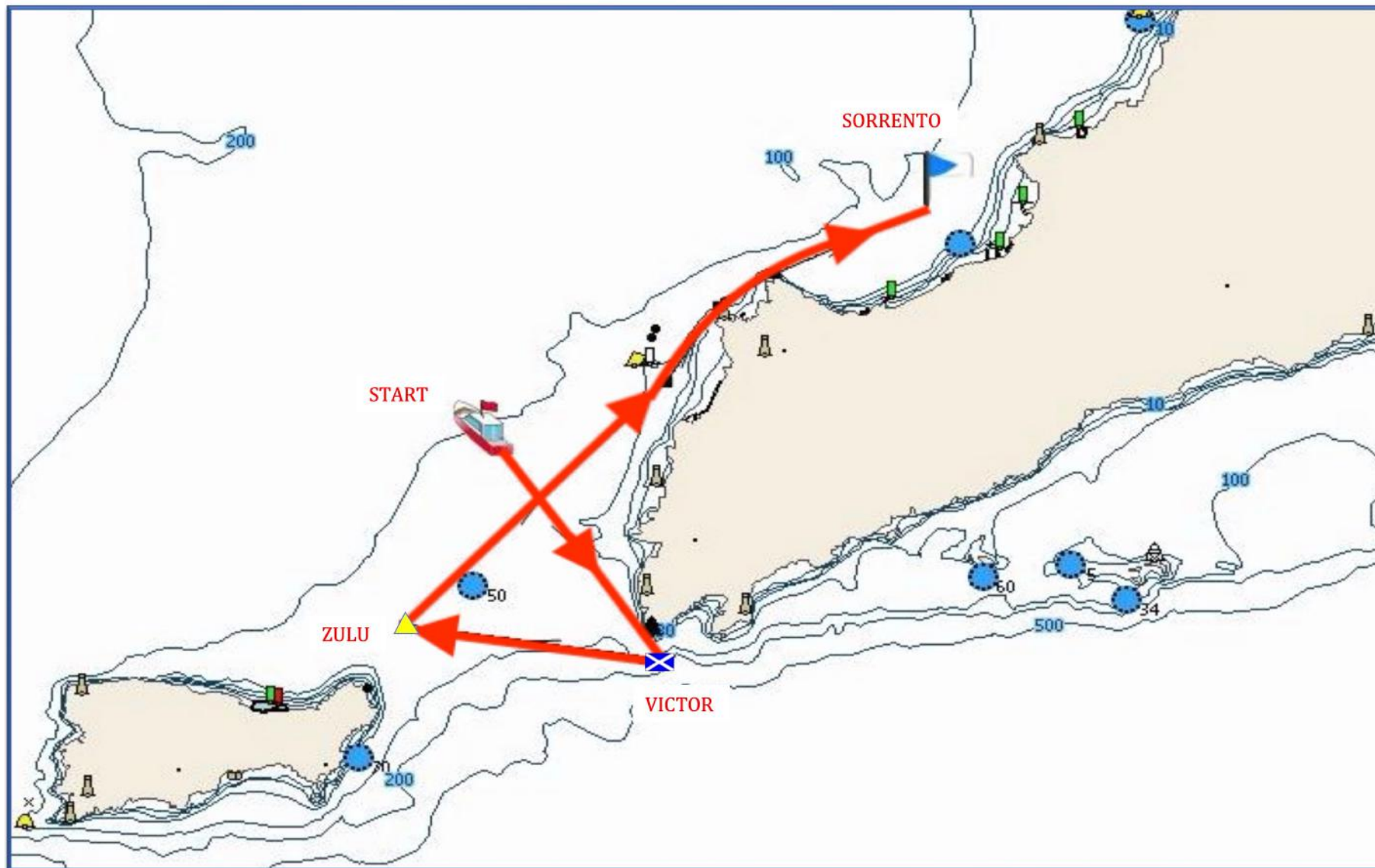
RESTRICTED AREA SEE PAR. 7.a



**Course 7** - approx. 20 nm

START — FARAGLIONI MARK(P) – ECHO (S) – SORRENTO(P)

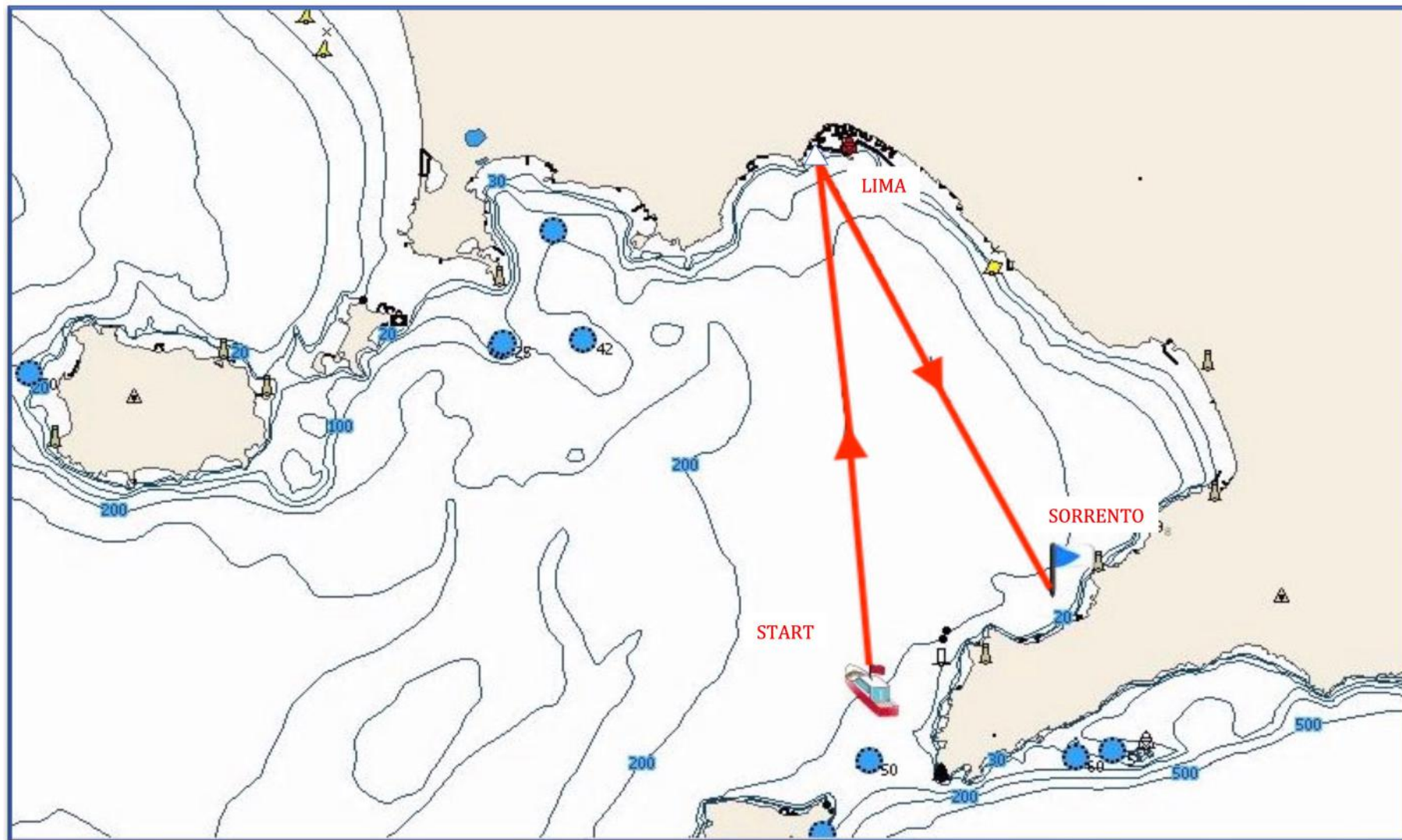
RESTRICTED AREA SEE PAR. 7.a



**Course 8** - approx. 13 nm  
START — VICTOR (S) – ZULU (S) – SORRENTO(P)

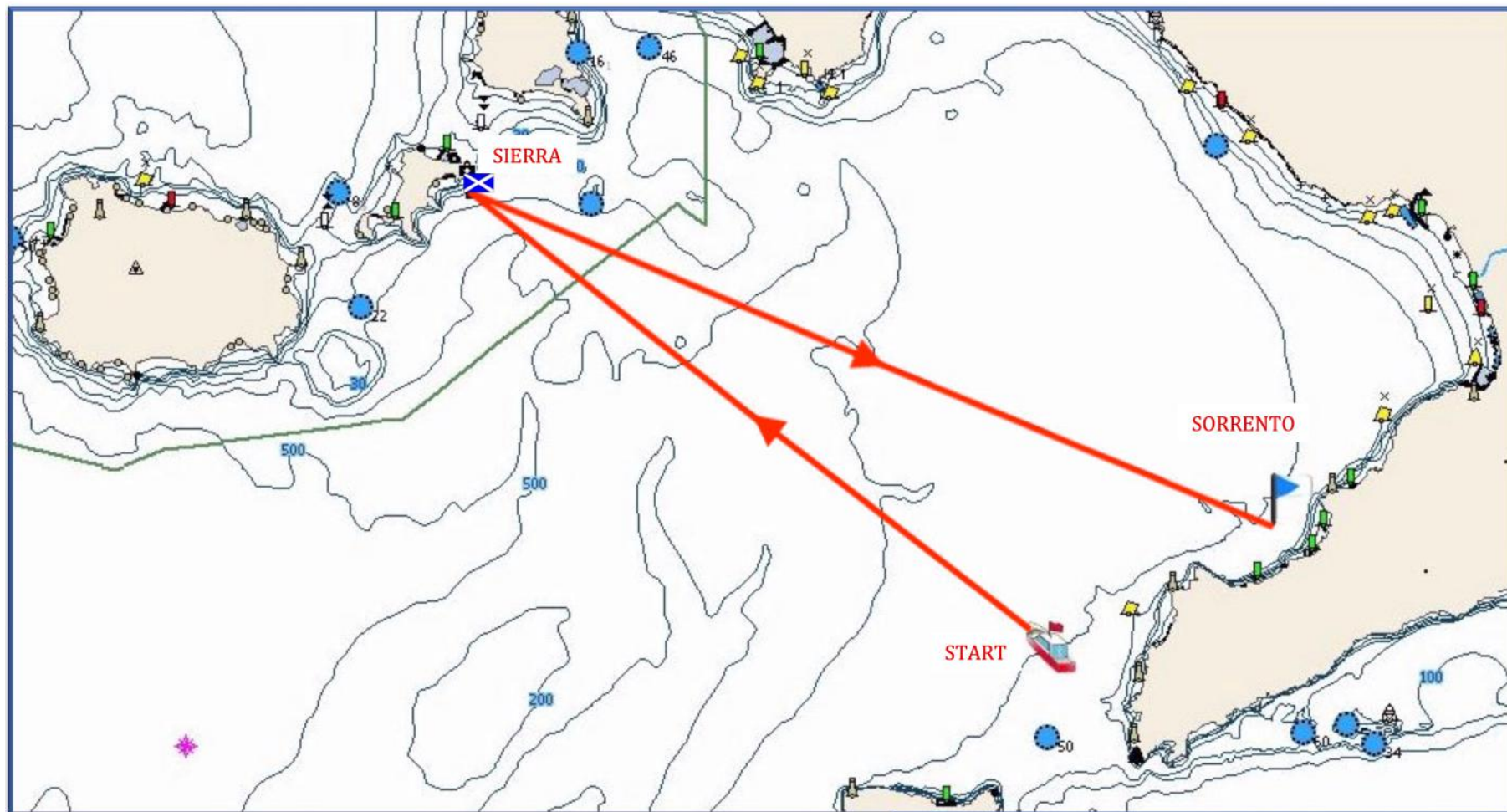
RESTRICTED AREA SEE PAR. 7.a





**Course 9** - approx. 26 nm

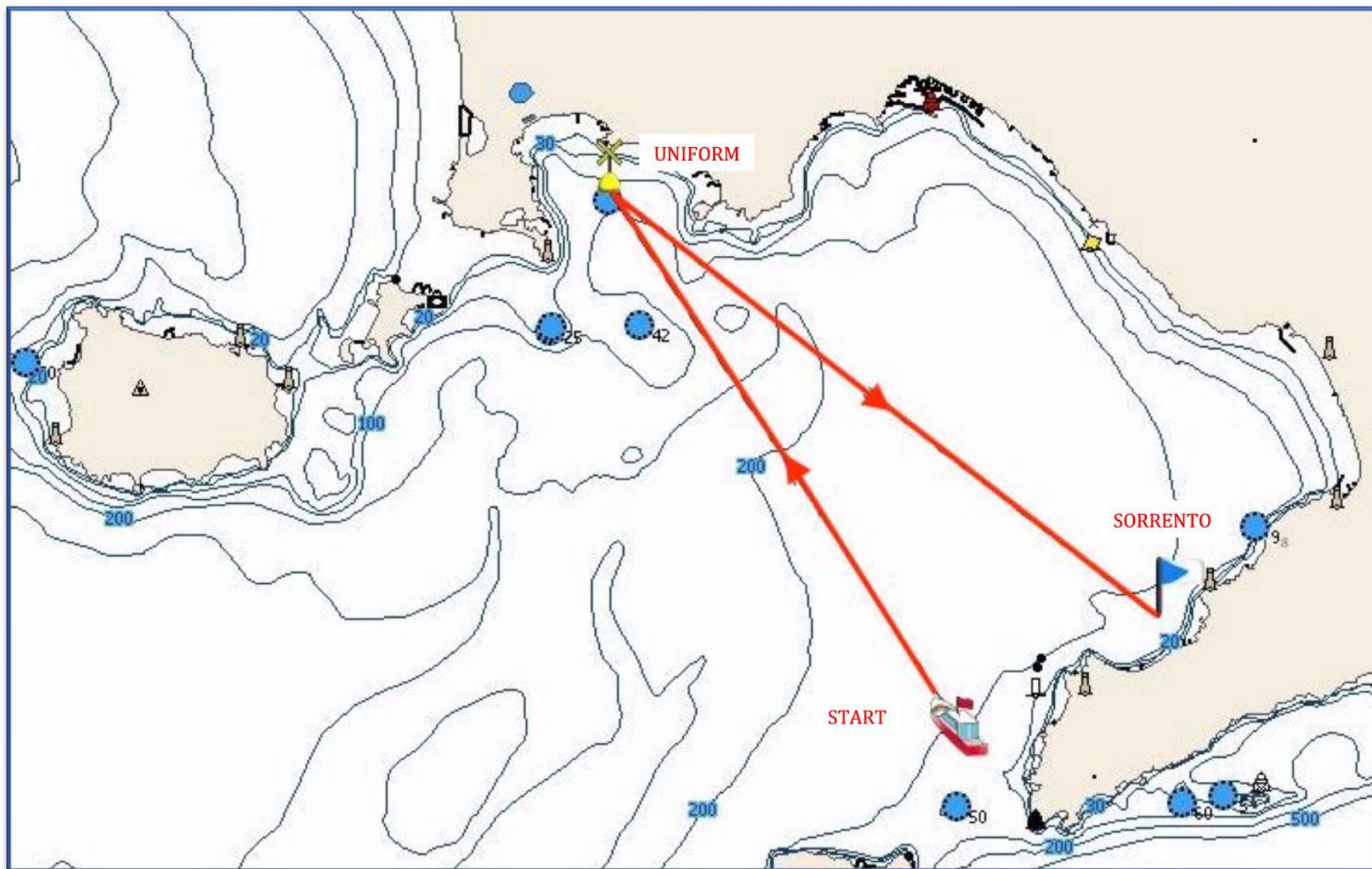
START — LIMA (S) – SORRENTO(P)



**Course 10** - approx. 32 nm

START — SIERRA (S) – SORRENTO(P)

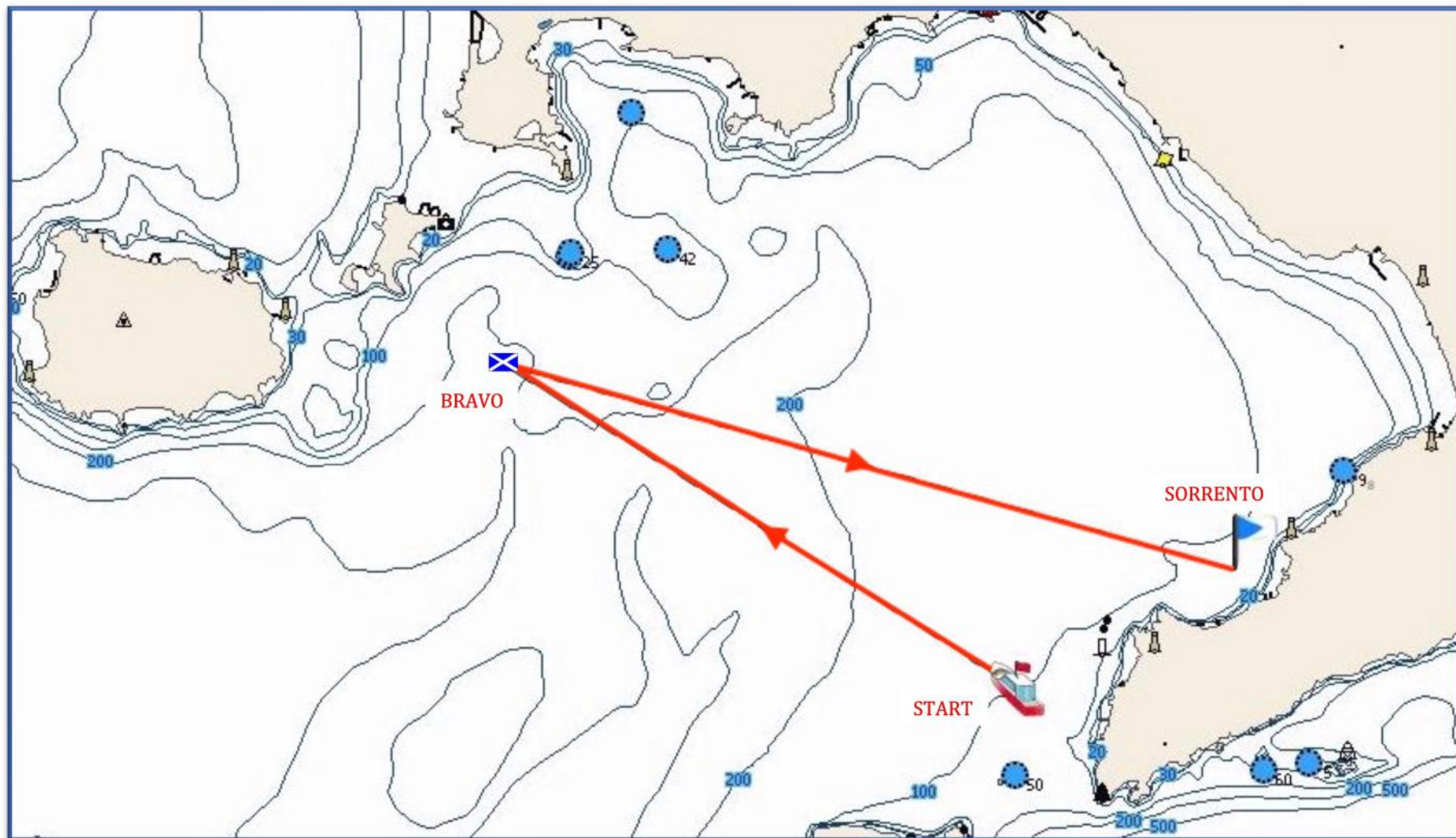




**Course 11** - approx. 29 nm

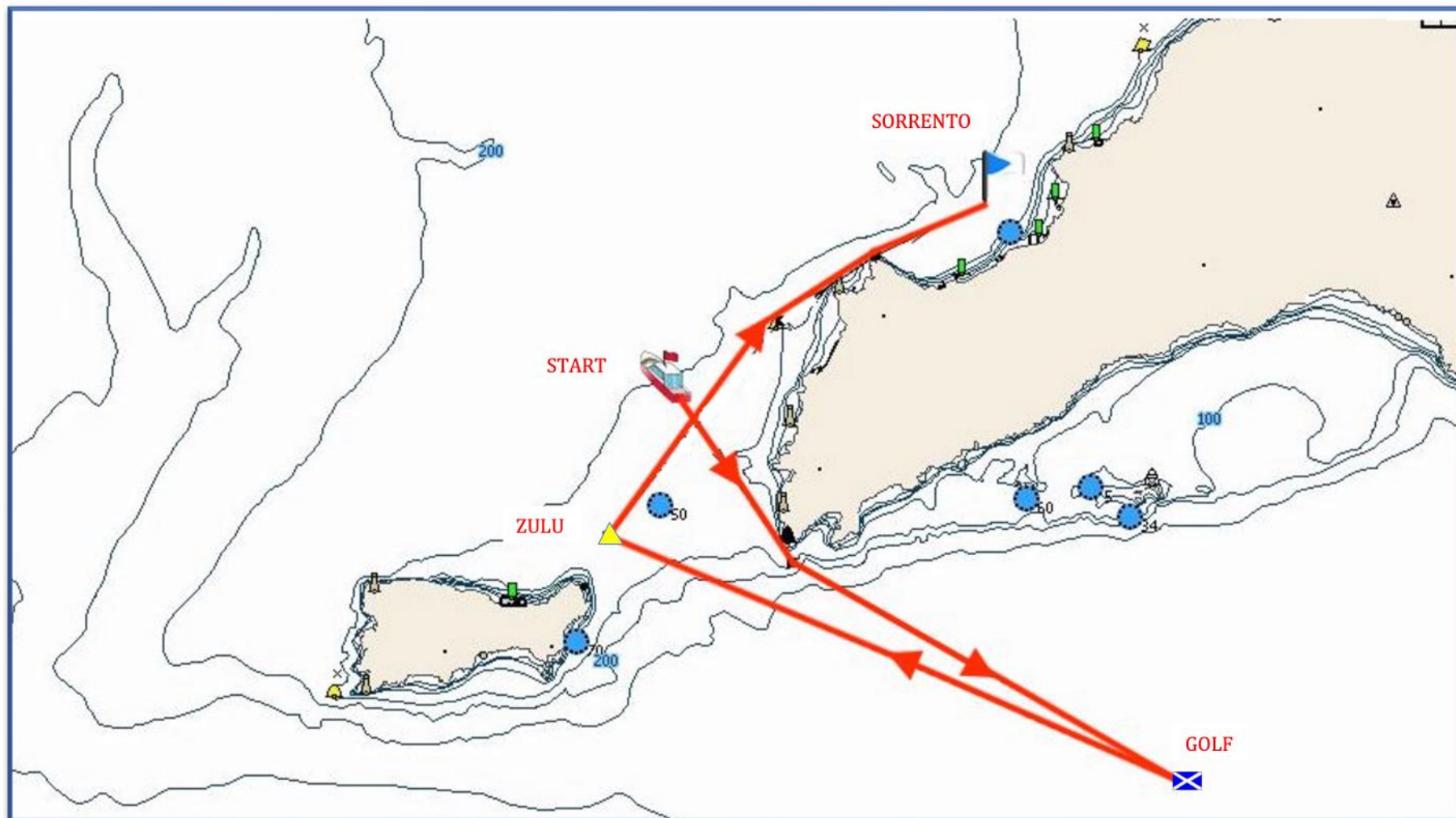
START — UNIFORM(S) – SORRENTO(P)





**Course 12** - approx. 27 nm

START — BRAVO(S) – SORRENTO(P)



**Course 13** - approx. 25 nm  
START — GOLF (S) – ZULU (S) – SORRENTO(P)

RESTRICTED AREA SEE PAR. 7.a