



**SUN HUNG KAI & CO.**



**Incorporating the 2024 29er Asian Championship**  
**30 January to 4 February 2024**



Culture, Sports and Tourism Bureau  
Arts & Sport Development Fund  
文化體育及旅遊局  
藝術及體育發展基金

Subvented By  
資助機構



Supported By  
支持機構



Title Sponsor  
冠名贊助



Supported By  
支持機構



Co Organizer  
協辦機構



## REGATTA OFFICIALS

<p><b>Race Committee</b></p> <p>Peter Davies, Regatta Chairman</p> <p>Barry Truhol, Principal Race Officer</p> <p>Ailsa Angus, Safety Officer</p> <p>Brenda Davies, Race Officer</p> <p>Inge Strompf-Jepsen, Race Officer</p> <p>Elberti Uiterwaal-Postma, Race Officer</p> <p>Paul Kan, Race Officer</p> <p>Vivian Cheung, Race Officer</p>	<p><b>Chairman, International Jury</b></p> <p>Rut Subniran (THA)</p> <hr/> <p><b>Chairman, Technical Committee</b></p> <p>Patrick Lam</p>
--	---

## SAILING INSTRUCTIONS

*For the notation '[DP]' in a rule in the Sailing Instructions (SIs), refer to the Racing Rules of Sailing - Introduction - Notation.*

*The notation '[NP]' in a rule in the SIs means that a breach of this rule will not be grounds for a protest or request for redress by a boat. This changes RRS 60.1(a) and (b).*

*The notation '[SP]' in a rule in the SIs denotes a standard penalty which will be imposed by the race committee without a hearing. This changes RRS 63.1 and A5.*

### 1 RULES

- 1.1 See Notice of Race (NoR) 1.
- 1.2 Where there is conflict with the NoR, the Sailing Instructions (SIs) will prevail except that neither shall change nor alter any class rules. This changes RRS 63.7.

### 2. CHANGES TO SAILING INSTRUCTIONS

Any change to the SIs will be posted before 0900hrs on the day it will take effect, except that any change to the schedule of races will be posted by 2000hrs on the day before it will take effect.

### 3. COMMUNICATIONS WITH COMPETITORS

- 3.1 Notices to competitors will be posted on the online official notice board (ONB) located at [www.hongkongraceweek.com/online-notice-board](http://www.hongkongraceweek.com/online-notice-board).
- 3.2 The race office is located at the 2/F of the RHKYC Middle Island Clubhouse.

### 4. CODE OF CONDUCT

[DP] Competitors and support persons shall comply with reasonable requests from race officials.

### 5. SIGNALS MADE ASHORE

- 5.1 Signals made ashore will be displayed on the flagpole on the RHKYC Middle Island hardstanding.
- 5.2 When flag AP is displayed ashore, '1 minute' is replaced with 'not less than 30 minutes' in the Race Signals AP.
- 5.3 [DP][NP] Flag D with one sound means 'Boats shall not leave their assigned parking location until this signal is made. The warning signal will not be made less than 30 minutes after flag D is displayed.' When flag D is displayed with a class flag it applies to that class only. When flag D is displayed for a class, sailors shall wait by their boats at their assigned parking location and await launching instructions from the beachmaster.
- 5.4 [DP][NP] Flag B with one sound means that a boat shall not sail through the narrow channel between Middle Island and Repulse Bay when going out to race.

## 6. SCHEDULE

6.1 The schedule will be:

<b>All Classes &amp; Fleets</b>	
Opening Ceremony	31 January (~1645hrs)

<b>2.4mR, ILCA 4 &amp; 6, RS Feva, Optimist Main &amp; Intermediate</b>	
Measurement & Equipment Inspection	30 January (0900 - 1700hrs) 31 January (0900 - 1600hrs)
Safety Tag Collection	30 January (0900 - 1700hrs) 31 January (0900 - 1600hrs)
Coach Briefing	31 January (1100hrs) 1 - 4 February (0830hrs)
Practice Race	31 January
Racing	1 - 4 February
Prizegiving	4 February (~1800hrs)

<b>29er</b>	
Measurement & Equipment Inspection	At Booked Appointment Time
Safety Tag Collection	30 January (0900 - 1700hrs) 31 January (0900 - 1600hrs)
Coach Briefing	31 January (1100hrs) 1 - 4 February (0830hrs)
Practice Race	31 January
Racing	1 - 4 February
Prizegiving	4 February (~1800hrs)

<b>Laser Pico/Fusion Green Fleet</b>	
Safety Tag Collection by Team Leaders (requires endorsed Safety Form)	31 January (0830 - 0900hrs)
Sailor/Coach Briefing	31 January (1000hrs) 1 February (0900hrs)
Racing	31 January - 1 February
Prizegiving	1 February (~1645hrs)

<b>Optimist Green Fleet</b>	
Safety Tag Collection by Team Leaders (requires endorsed Safety Form)	2 February (0830 - 0900hrs)
Sailor/Coach Briefing	2 - 4 February (1000hrs)
Racing	2 - 4 February
Prizegiving	4 February (~1645hrs)

## 6.2 Number of races:

Class/Fleet	Maximum # of races	Target # of races per day
2.4mR, ILCA 4 & 6, RS Feva, Optimist Main & Intermediate	12	3 *
29er	14	3 or 4
Green Fleets - Optimist, Laser Pico/Fusion	-	4 **

\* For the 2.4mR, ILCA 4 & 6, RS Feva, Optimist Main & Intermediate classes/fleets, one extra race per day may be sailed provided that no class/fleet becomes more than one race ahead of schedule and the change is made according to SI 2.

\*\* The Green Fleet Race Committee may adjust this target to suit the conditions and the abilities of the Green Fleets.

## 6.3 The scheduled times of the warning signals are:

2.4mR, 29er, ILCA 4 & 6, RS Feva, Optimist Main & Intermediate		
31 January	Practice race	1355hrs
1 - 4 February	First race	1055hrs
Laser Pico/Fusion Green Fleet		
31 January	First race	After briefing @ 1000hrs
1 February	First race	After briefing @ 0900hrs
Optimist Green Fleet		
2 - 4 February	First race	After briefing @ 1000hrs

6.4 The warning signal for any subsequent races shall be as soon as practicable after the finish of the preceding race.

6.5 To alert boats that a race or sequence of races will begin soon, the orange starting line flag will be displayed with one sound signal at least five minutes before a warning signal is displayed.

6.6 On 4 February 2024 no warning signal will be made after 1600hrs. In the case of one or more postponements, general recalls or abandonments when the initial warning signal was made prior to 1600hrs, the race committee may display subsequent warning signals after that time.

## 7. CLASS/FLEET FLAGS AND RIBBONS

## 7.1 Class/fleet flags will be:

Class/Fleet	International Code Flag / Coloured Flag
2.4mR	Class insignia on a White Flag
29er	Class insignia on a Yellow Flag
ILCA 4	Class insignia on a Yellow Flag
ILCA 6	Class insignia on a Green Flag
Laser Pico/Fusion Green Fleet	G
Optimist Main Fleet	Class insignia on a Yellow Flag
Optimist Intermediate Fleet	Class insignia on a Blue Flag
Optimist Green Fleet	G
RS Feva	J

7.2 [DP][NP] All participants in the Optimist Main Fleet shall fly a yellow ribbon from the top of their boat's sprit during racing. All participants in the Optimist Intermediate Fleet shall fly a blue ribbon from the top of their boat's sprit during racing. The ribbons shall be collected from the race office on 30 & 31 January. Replacement ribbons are available from the race office.

## 8. RACING AREAS

- 8.1 Attachment A shows the approximate location of the racing areas. The possible racing areas for each class/fleet are:

Class/Fleet	Racing Areas
Laser Pico/Fusion & Optimist Green Fleets	A / B
2.4mR, Optimist Main & Intermediate Fleets & RS Feva	B / C / E
29er, ILCA 4 & 6	B / C / D / E

- 8.2 The race committee will allocate racing areas and race committee signal vessels based upon the weather conditions, the available resources and the number of races completed by each class in order to provide as far as reasonably possible an equal and fair event for all boats. The day's racing area and race committee signal vessel allocation for each class/fleet will be posted by 0830hrs. For the practice race for the 2.4mR, 29er, ILCA 4 & 6, RS Feva, Optimist Main & Intermediate classes/fleets, the racing area and race committee signal vessel allocation will be posted by 1100hrs.

## 9. COURSES

- 9.1 The diagrams in Attachment B show the courses, including the course designation, the approximate angles between legs, the order in which marks are to be passed, and the side on which each mark is to be left.
- 9.2 No later than the warning signal, the race committee signal vessel may display the approximate compass bearing of the first leg.

## 10. MARKS

Marks are described in Attachment B.

## 11. THE START

- 11.1 The starting line will be between staffs displaying orange flags on the starting marks when they are both committee vessels or between the staff displaying an orange flag on the starting mark at the starboard end and the course side of the port-end starting mark.
- 11.2 [DP][NP] Boats whose warning signal has not been made shall avoid the starting area during the starting sequence for other races.
- 11.3 A boat that does not start within 4 minutes after her starting signal will be scored Did Not Start without a hearing. This changes RRS A5.1 and A5.2.

## 12. CHANGE OF THE NEXT LEG OF THE COURSE

To change the next leg of the course, the race committee will move the original mark or the finishing line to a new position.

## 13. THE FINISH

The finishing line will be between staffs displaying blue flags on the finishing marks when they are both committee vessels or between the staff displaying a blue flag on the committee vessel at one end and the course side of the other finishing mark.

## 14. PENALTY SYSTEM

- 14.1 See NoR 1.3, 13.2 and 13.3.
- 14.2 For infringements of class rules the jury may award a penalty of less than disqualification.

## 15. TIME LIMITS AND TARGET TIMES

15.1 Race target times and finishing windows are:

Class/Fleet	Target Time	Finishing Window
Laser Pico/Fusion & Optimist Green Fleets	30 min	20 min
Optimist Main	45 min	15 min
2.4mR, ILCA 4 & 6, RS Feva & Optimist Intermediate	40 min	15 min
29er	30 min	15 min

15.2 Failure to meet the target time will not be grounds for redress. This changes RRS 62.1(a).

15.3 The finishing window is the time for boats to finish after the first boat in their class/fleet sails the course and finishes. Boats failing to finish within the finishing window and not subsequently retiring, penalized or given redress will be scored Did Not Finish without a hearing. This changes RRS 35, A5.1 and A5.2.

15.4 [NP] When one or more boats have sailed the course and finished the race committee may apply an alternative finishing procedure. A race committee vessel may notify a boat still racing that she has finished and will be scored a finishing place corresponding to her position on the water. The boat, once notified, shall return to the starting area if further races are scheduled. The boat will be scored in the finishing place as recorded by the race committee vessel. This changes RRS Definition Finish, 28.1, A5.1 and A5.2.

## 16. HEARING REQUESTS

16.1 For each class/fleet, the protest time limit is 90 minutes after the last boat in the class/fleet has finished the last race of the day or the race committee signals no more racing today, whichever is later. However when a protest is brought by the race committee the time limit for that protest shall be 90 minutes from when the last boat of the entire event for that day finishes or the last 'no more racing today' signal is made, whichever is later.

16.2 Hearing request forms are available at [www.hongkongraceweek.com/online-notice-board](http://www.hongkongraceweek.com/online-notice-board) (File a Protest) and at the HKRW race office.

16.3 For the Optimist Main & Intermediate fleets only, to inform the race committee of the boat/s being protested, the boat intending to protest shall approach the starboard side of the race committee boat at the starboard end of the finishing line immediately after finishing and shall hail the protested boat's sail number/s.

16.4 Notices will be posted no later than 30 minutes after the protest time limit to inform competitors of hearings in which they are parties or named as witnesses. Hearings will be held in the protest rooms, located on the 2/F of the RHKYC Middle Island clubhouse beginning at the time posted.

16.5 A list of boats that have been penalized for breaking RRS 42 under Appendix P will be posted.

16.6 A breach of a rule in RRS Appendix G will not be grounds for a protest by a boat. This changes RRS 60.1(a).

## 17. ARBITRATION AND ADVISORY HEARING

17.1 RRS Appendix T will apply except that T1(b) is changed so that the Post-Race Penalty is 20%.

### Advisory Hearing

17.2 For the Laser Pico/Fusion and Optimist Green Fleets only, when there is an incident that might result in the lodging of a protest or a request for redress, a boat, the jury or race committee may request an advisory hearing and notify any boat involved in the incident. An adviser will then call a hearing to learn what may have happened and will state whether any rule appears to have been broken, and by which boat. A boat may as a result notify the race committee that she accepts an exoneration penalty when it applies to the incident, or choose to retire. The adviser need not be a member of the jury.

## 18. SCORING

- 18.1 All races shall be scored as one series. The Low Point System of RRS Appendix A shall apply to all races.
- 18.2 Subject to SI 18.5, a boat's score shall be calculated in accordance with RRS A2.
- 18.3 Three races are required to be completed to constitute a series.
- 18.4 (a) When three races have been completed, a boat's series score will be the total of her race scores.  
 (b) When from four to six races have been completed, a boat's series score will be the total of her race scores excluding her worst score.  
 (c) When seven or more races have been completed, a boat's series score will be the total of her race scores excluding her two worst scores.
- 18.5 Except for race scores excluded under SI 18.4, a boat's regatta score will be the total of her race scores plus any non-excludable points under SI 19.2(a).
- 18.6 For the Laser Pico/Fusion Green Fleet, the Portsmouth Yardstick System will be used to calculate a boat's corrected time. The Portsmouth numbers are: Laser Pico - 1330, Fusion - 1300.
- 18.7 To request correction of an alleged error in posted race or series results, a boat shall complete a scoring inquiry form available at [www.hongkongraceweek.com/online-notice-board](http://www.hongkongraceweek.com/online-notice-board).

## 19. SAFETY REGULATIONS

- 19.1 [DP][NP] RRS 40.1 will apply. The personal flotation device shall be adequate for the conditions.
- 19.2 **Check-out and check-in:** The requirements of these instructions are specified for the safety of competitors. For doublehanded boats, the requirements apply to both helm and crew.
- (a) [NP][SP] Each competitor shall check out each day before launching by scanning their safety tag at the RHKYC Middle Island launching ramp. After returning, each competitor shall check in by scanning their safety tag at the RHKYC Middle Island launching ramp within the protest time limit. Competitors shall wear their safety tags at all times whilst afloat. The penalty for each breach of SI 19.2(a) shall be 2 penalty points (for each crew member in breach) applied to the competitor's boat's score. The penalty points will be non-excludable. This changes RRS 63.1.
- (b) Safety tags shall be collected according to the schedule in SI 6.1. Safety tags shall be returned to the check-in point on the last scheduled day of racing. The RFID chip in the tag corresponds with the competitor's personal details in the event entry system. Therefore the tag is strictly personal and shall not be exchanged with other sailors. Replacement of lost safety tags will result in a non refundable fee of HK\$100.
- 19.3 [DP][NP] Under all circumstances coaches and other support boats are expected to assist any boat in distress.
- 19.4 [DP][NP] When the race committee displays flag V with a long sound signal, all official and coach/support vessels shall monitor VHF channel 72 for search and rescue instructions.
- 19.5 [DP][NP] All boats shall sail close to their race committee signal vessel on starboard tack and hail their sail number at the commencement of their day's racing.
- 19.6 [DP][NP] A boat that retires from a race shall notify the race committee as soon as possible. Boats shall not return to Middle Island unsupervised.
- 19.7 Communication may be made to the race committee by hail, by VHF or by telephone as follows:

Race Committee Signal Vessel	VHF Channel	Mobile Number
RHKYC Bob Wilson	77	9206 3935
RHKYC Hector Ross	96	5196 5663
RHKYC Kellett VII	77	9382 9157
RHKYC Kellett VIII	99	9326 5908

- 19.8 At all times boats shall keep clear of commercial traffic and shall not enter any prohibited area. The International Regulations for Preventing Collisions at Sea (IRPCAS), including Rule 10 - Traffic Separation Schemes (TSS), shall apply and shall govern the behaviour of all competing boats with respect to commercial vessels and other non-racing pleasure craft.

- 19.9 Commercial vessels underway and vessels engaged in towing shall be considered to be a 'Moving Prohibited Area' as follows:
- Ahead of the vessel, 200 metres or two lengths of the vessel, whichever is greater. For a vessel towing, 100 metres.
  - Abeam of the vessel, 100 metres or two widths of the vessel, whichever is greater.
  - Astern of the vessel, 50 metres.
- 19.10 [NP] Boats shall not sail within any TSS. Boats found sailing within a TSS will be required to move out of the TSS by the most direct course by any one of the following: the race committee, an RHKYC Safety Boat, a Marine Police launch or a HK Marine Department launch. Boats which refuse or ignore such a request will be automatically disqualified from the day's racing by the race committee without a hearing. This changes RRS 63.1.
- 19.11 All prohibited areas defined in SI 19 shall also be considered 'obstructions' (as provided for in the RRS definition of 'Obstruction'), and applicable to RRS 19 and 20.
- 19.12 It is the intention of SI 19 to provide a framework for safe and fair sailing in accordance with the spirit of the RRS and IRPCAS. Nothing in these SIs shall relieve a boat from its obligations not to impede the passage of any commercial vessel that can navigate only within a narrow channel or fairway.

## 20. REPLACEMENT OF CREW OR EQUIPMENT [DP][NP]

- 20.1 Substitution of competitors is not allowed without prior written approval of the race committee.
- 20.2 Substitution of damaged or lost equipment is not allowed unless authorised in writing by the technical committee. Requests for substitution shall be made to the committee at the first reasonable opportunity, which may be after the race.
- 20.3 Requests can be made on the forms available at [www.hongkongraceweek.com/online-notice-board](http://www.hongkongraceweek.com/online-notice-board).

## 21. EQUIPMENT AND MEASUREMENT CHECKS

- 21.1 A boat or equipment may be inspected at any time for compliance with the class rules, NoR and SIs.
- 21.2 [DP][NP] When instructed by a race official on the water, a boat shall proceed to a designated area for inspection.

## 22. OFFICIAL VESSELS

Official vessels will be marked as follows:

Vessel	Flag
Race Committee	White flag with black RC
Jury	White flag with black JURY
Technical Committee	White flag with black M
Safety	White flag with black 1, 2, 3 etc.

## 23. SUPPORT VESSELS AND COACHES [NP][DP]

- 23.1 See NoR 15.
- 23.2 For the Amended Worlds Courses only, after the last start of a sequence of races, coach/support vessels may move between the area below the start and the finish area through the centre channel as shown in the course diagram in Attachment B.
- 23.3 Coach/support vessels will be permitted to attend to Green Fleet sailors at the discretion of the race committee.
- 23.4 Team leaders, coaches and other support personnel shall attend the daily coaches' briefing held in the marquee on the RHKYC Middle Island hardstanding as per the schedule in SI 6.1.

## 24. TRASH DISPOSAL [NP][DP]

All competitors are reminded of RRS 47. All trash must be taken back onshore after racing or placed on official/support vessels subject to the agreement of those in charge of those vessels.

## 25. CAMERAS/SOUND/TRACKING EQUIPMENT [DP][NP]

Boats may be required to carry cameras/sound/tracking equipment as specified by the organising authority.

## 26. BERTHING [DP][NP]

All boats shall be kept in their assigned places in the RHKYC Middle Island boat park/dock.



**27. PRIZES**

27.1 As per NoR 17.

27.2 Prizegivings will be as per the schedule in SI 6.1.

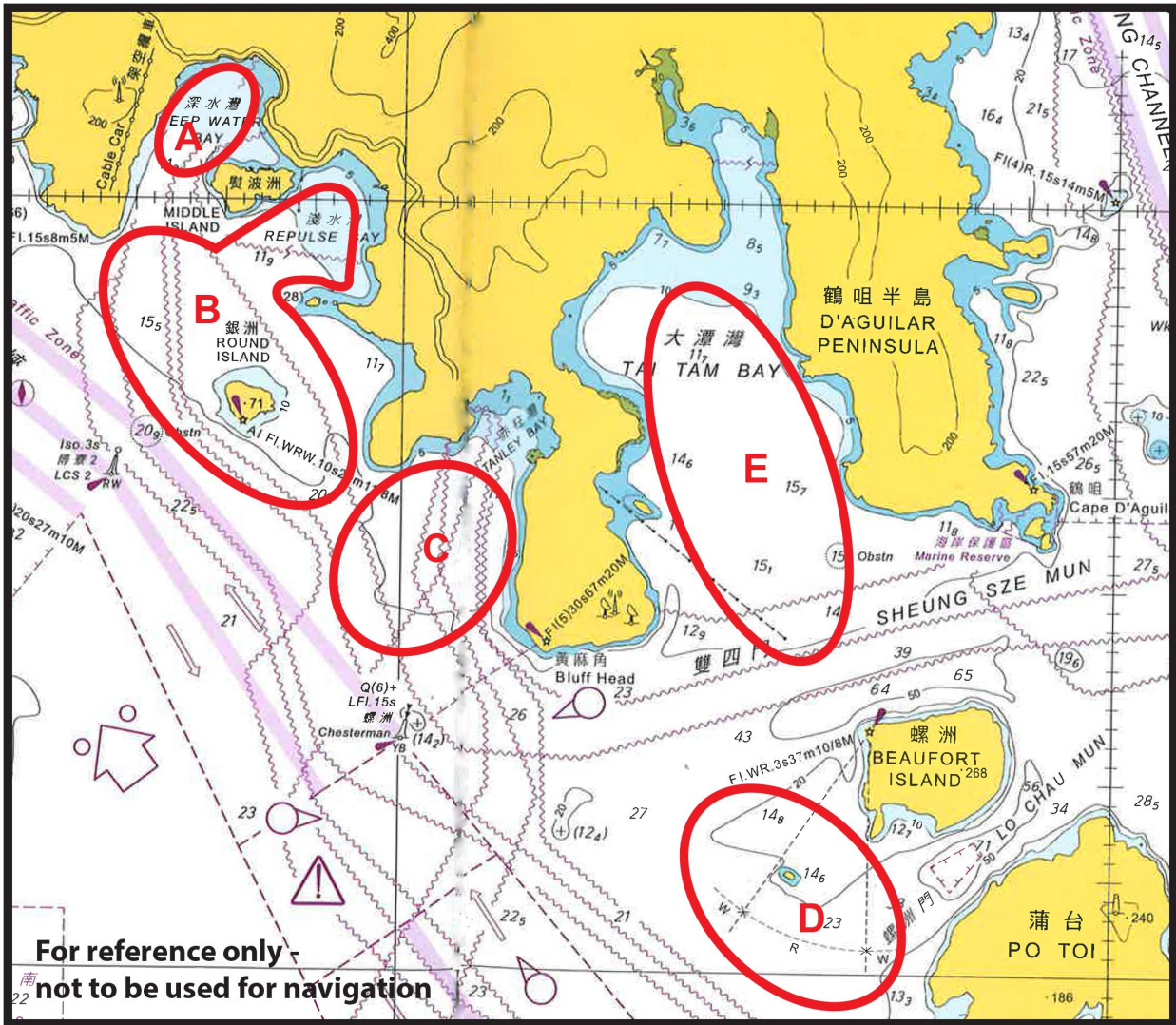
**28. DISCLAIMER OF LIABILITY**

See NoR 19.

**29. INSURANCE**

See NoR 20.

ATTACHMENT A – APPROXIMATE LOCATION OF RACING AREAS

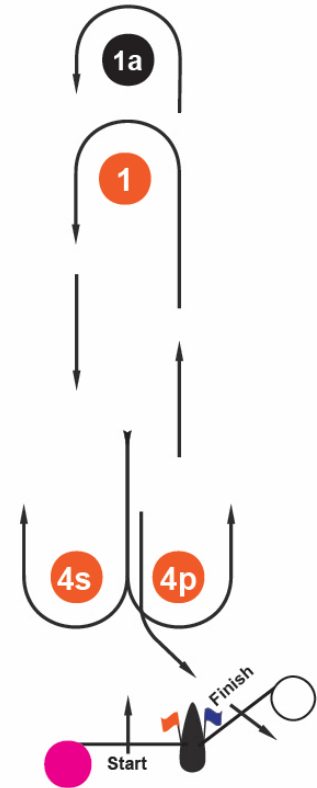


## ATTACHMENT B – COURSES

## Windward / Leeward Courses

Signal	Mark Rounding Order
L2	Start – 1 – 4s/4p – 1 – 4p – Finish
L3	Start – 1 – 4s/4p – 1 – 4s/4p – 1 – 4p – Finish
L4	Start – 1 – 4s/4p – 1 – 4s/4p – 1 – 4s/4p – 1 – 4p – Finish

Signal	Mark Rounding Order
L2A	Start – 1a – 4s/4p – 1a – 4p – Finish
L3A	Start – 1a – 4s/4p – 1a – 4s/4p – 1a – 4p – Finish
L4A	Start – 1a – 4s/4p – 1a – 4s/4p – 1a – 4s/4p – 1a – 4p – Finish



## Notes for Windward / Leeward Courses

Mark 1 will be an orange inflatable buoy which shall be rounded to port.

Mark 1a will be a black inflatable buoy which shall be rounded to port.

Gate marks 4s/4p will be orange inflatable buoys. At the gate, boats shall pass between the marks and round either mark. The gate may be replaced by a single mark which shall be rounded to port.

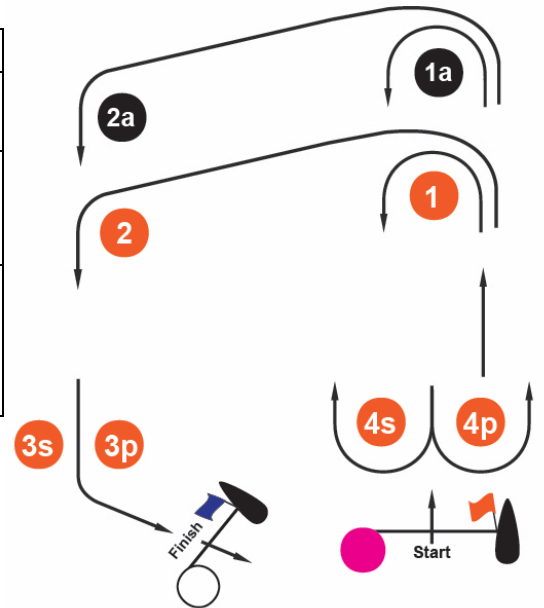
The starting marks will be a race committee vessel at the starboard end of the line and an inflatable buoy with a pink cover or a conical GPS buoy with a white cover or a race committee vessel at the port end.

The finishing marks will be race committee vessel at the starboard end of the line and a white inflatable buoy or an inflatable buoy with a white cover at the port end. The cover may be printed with sponsor's advertising.

**Inner Loop Trapezoid Courses**

Signal	Mark Rounding Order
I2	Start – 1 – 4s/4p – 1 – 2 – 3p – Finish
I3	Start – 1 – 4s/4p – 1 – 4s/4p – 1 – 2 – 3p – Finish
I4	Start – 1 – 4s/4p – 1 – 4s/4p – 1 – 4s/4p – 1 – 2 – 3p – Finish

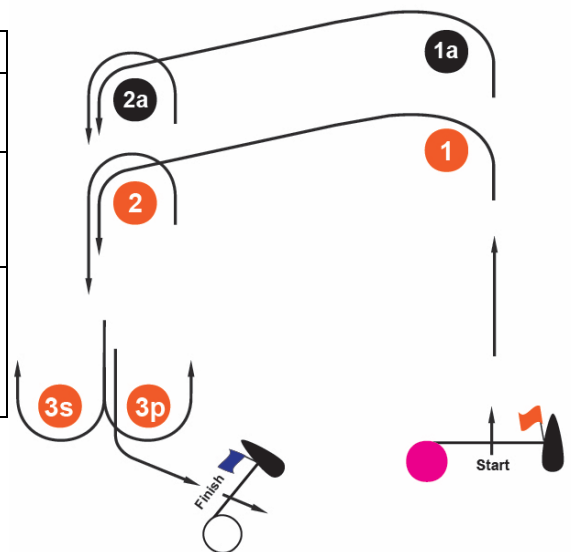
Signal	Mark Rounding Order
I2A	Start – 1a – 4s/4p – 1a – 2a – 3p – Finish
I3A	Start – 1a – 4s/4p – 1a – 4s/4p – 1a – 2a – 3p – Finish
I4A	Start – 1a – 4s/4p – 1a – 4s/4p – 1a – 4s/4p – 1a – 2a – 3p – Finish



**Outer Loop Trapezoid Courses**

Signal	Mark Rounding Order
O2	Start – 1 – 2 – 3s/3p – 2 – 3p – Finish
O3	Start – 1 – 2 – 3s/3p – 2 – 3s/3p – 2 – 3p – Finish
O4	Start – 1 – 2 – 3s/3p – 2 – 3s/3p – 2 – 3s/3p – 2 – 3p – Finish

Signal	Mark Rounding Order
O2A	Start – 1a – 2a – 3s/3p – 2a – 3p – Finish
O3A	Start – 1a – 2a – 3s/3p – 2a – 3s/3p – 2a – 3p – Finish
O4A	Start – 1a – 2a – 3s/3p – 2a – 3s/3p – 2a – 3s/3p – 2a – 3p – Finish



**Notes for Trapezoid Courses**

Marks 1 and 2 will be orange inflatable buoys which shall be rounded to port.

Marks 1a and 2a will be black inflatable buoys which shall be rounded to port.

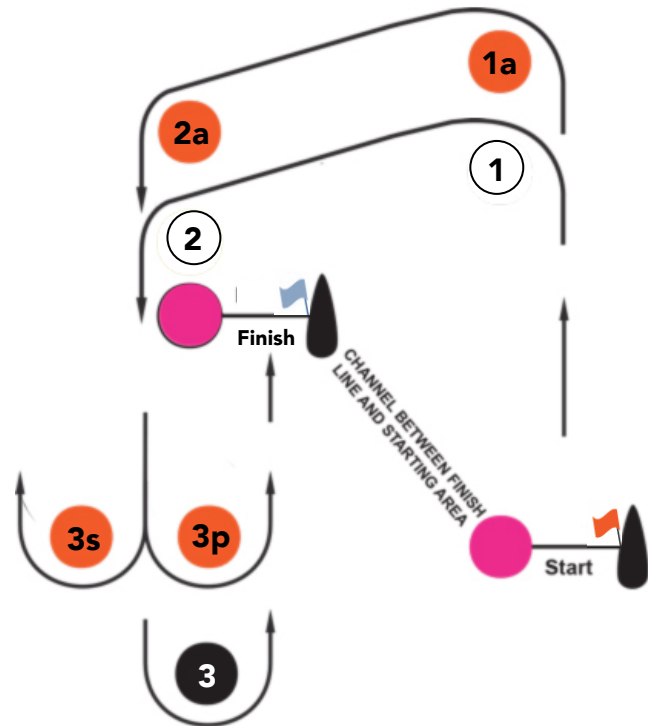
Gate marks 3s/3p and 4s/4p will be orange inflatable buoys. At a gate, boats shall pass between the marks and round either mark. A gate may be replaced by a single mark which shall be rounded to port.

The starting marks will be a race committee vessel at the starboard end of the line and an inflatable buoy with a pink cover or a conical GPS buoy with a white cover or a race committee vessel at the port end.

The finishing marks will be race committee vessel at the port end of the line and a white inflatable buoy or an inflatable buoy with a white cover at the starboard end. The cover may be printed with sponsor's advertising.

### Amended Worlds Courses

Signal	Mark Rounding Order
1	Start – 1 – 2 – 3s/3p – Finish
1A	Start – 1a – 2a – 3s/3p – Finish
2	Start – 1 – 2 – 3 – Finish
2A	Start – 1a – 2a – 3 – Finish



### Notes for Amended Worlds Courses

Marks 1 and 2 will be white inflatable buoys which shall be rounded to port.

Marks 1a and 2a will be orange inflatable buoys which shall be rounded to port.

For Courses 1 and 1A, gate marks 3s/3p will be orange inflatable buoys. At the gate, boats shall pass between the marks and round either mark. The gate may be replaced by a single mark which shall be rounded to port.

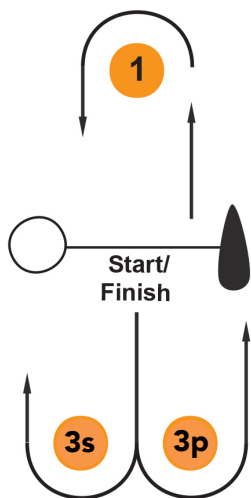
For Courses 2 and 2A, mark 3 will be a black inflatable buoy which shall be rounded to port.

The starting marks will be a race committee vessel at the starboard end of the line and an inflatable buoy with a pink cover or a conical GPS buoy with a white cover or a race committee vessel at the port end.

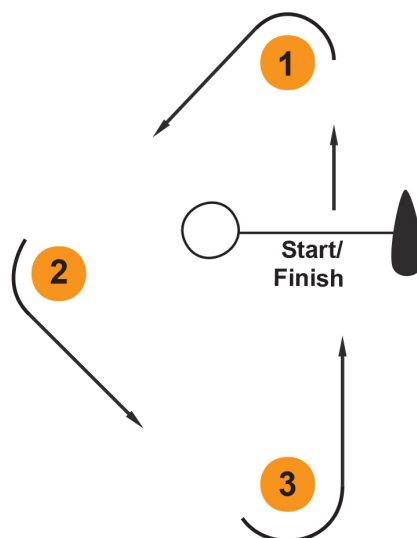
The finishing marks will be race committee vessel at the starboard end of the line and an inflatable buoy with a pink cover or a race committee vessel at the port end.

**Laser Pico/Fusion & Optimist Green Fleet Courses**

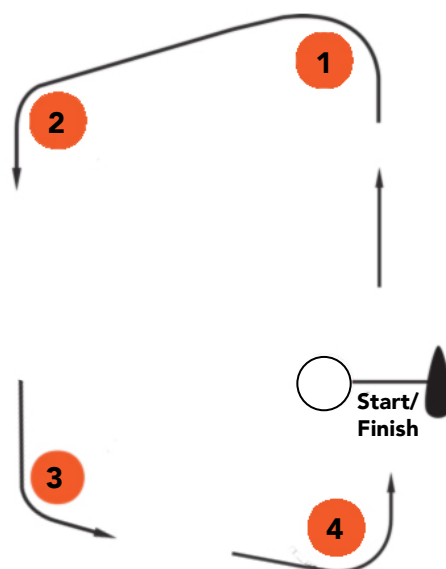
Signal	Mark Rounding Order
G1	Start – 1 – 3s/3p – Finish
G2	Start – 1 – 3s/3p – Start/Finish – 1 – 3s/3p – Finish



Signal	Mark Rounding Order
G3	Start – 1 – 2 – 3 – Finish
G4	Start – 1 – 2 – 3 – Start/Finish – 1 – 3 – Finish



Signal	Mark Rounding Order
G5	Start – 1 – 2 – 3 – 4 – Finish



**Notes for Laser Pico/Fusion & Optimist Green Fleet Courses**

Marks 1, 2, 3 and 4 will be orange inflatable buoys which shall be rounded to port. Gate marks 3s/3p will be orange inflatable buoys. At the gate, boats shall pass between the marks and round either mark. The gate may be replaced by a single mark which shall be rounded to port.

The starting/finishing marks will be a race committee vessel at the starboard end of the line and a white inflatable buoy or an inflatable buoy with a white cover at the port end.