



2023 CORK Green Fleet Optimist Regatta

CORK/Sail Kingston

August 4 - 6, 2023
Portsmouth Olympic Harbour
Kingston, Ontario, Canada



Sailing Instructions

The notation '[NP]' in a rule means that a boat may not protest another boat for breaking that rule. This changes RRS 60.1(a).

1. RULES

- 1.1. The event will be governed by the rules as defined in The Racing Rules of Sailing.
- 1.2. The Cork/ Sail Kingston Support Team Regulations as shown in Addendum 1 apply.

2. CHANGES TO THE SAILING INSTRUCTIONS

- 2.1. Any change to the sailing instructions will be posted before 0900 on the day it will take effect, except that any change to the schedule of races will be posted by 2000 on the day before it will take effect.

3. COMMUNICATIONS WITH COMPETITORS

- 3.1. Notices to competitors will be posted on the online official notice board (ONB) located at: <https://www.racingrulesofsailing.org/documents/5887/event>

4. CODE OF CONDUCT

- 4.1. [NP] [DP] Competitors and support persons shall comply with reasonable requests from regatta officials.

5. SIGNALS MADE ASHORE

- 5.1. Signals made ashore will be displayed from the flagpole located at the NE corner of the main POH building.
- 5.2. When flag L is displayed ashore over a numeral pennant, the numeral pennant indicates the number of the notice to competitors that is posted. This changes race signal L.
- 5.3. When flag AP is displayed ashore, '1 minute' is replaced with 'not less than 45 minutes' in the RRS Race Signals AP.
- 5.4. [DP][NP] Boats shall NOT launch until flag D is displayed with one sound. The warning signal will be made not less than 45 minutes after flag D is displayed.

6. SCHEDULE OF RACES

Date	Time	Event
August 4	1300	Warning signal of first race of the day
August 5,6	1100	Warning signal of first race of the day

- 6.1. There is no set number of races; racing will continue each day while the sailors are learning and enjoying themselves, with consultation between race committee and coaches.
- 6.2. To alert boats that a race or sequence of races will begin soon, the orange starting line flag will be displayed with one sound at least one minute before a warning signal is made.
- 6.3. On the last scheduled day of racing no warning signal will be made after 1500.

7. CLASS FLAGS

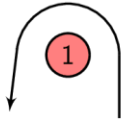
- 7.1. A green flag will be used as the class flag.

8. RACING AREA

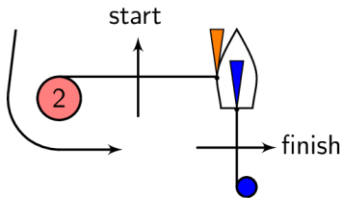
8.1. The racing area will be southwest of Portsmouth Olympic Harbour.

9. COURSES

9.1. The diagram below shows the course, including the approximate angles between legs, the order in which marks are to be passed, and the side on which each mark is to be left.



**Course to sail:
Start-1-2-Finish**



10. MARKS

Starting	Green Inflatable
Marks 1 & 2	Green Inflatable
Finish	Spar buoy

11. THE START

11.1. The starting line will be between a staff displaying an orange flag on the signal vessel and the staff displaying an orange flag on the starting mark.

12. THE FINISH

12.1. The finishing line will be between a staff displaying a blue flag on the signal vessel and the staff displaying a blue flag on the finishing mark.

12.2. If the race committee determines that the finishing order of some boats in a race is unlikely to change, it may use reasonable discretion to score those boats still racing points equal to their position in the race. This changes RRS A3, A4 and A5.2.

13. TIME LIMITS AND TARGET TIMES

Mark 1 Time Limit	Race Time Limit	Finishing Window	Target time
n/a	40 minutes	15 minutes	15 minutes

13.1. Race Time Limit: Time limit for the first boat to start, sail the course and finish.

13.2. Finishing Window: Time limit for boats to finish after the first boat starts, sails the course and finishes.

13.3. Failure to meet the Target Time will not be grounds for redress. This changes RRS 62.1(a).

13.4. Boats failing to finish within the Finishing Window shall be scored Did Not Finish without a hearing. This changes RRS 35, A5.1 and A5.2.

14. HEARING REQUESTS

14.1. Protests or Requests for Redress are not permitted by competitors; this changes RRS 60.1 (this is a training fleet and is not scored—only finishing places will be posted; discussions of rules and potential violations are welcome after racing).

15. SCORING

15.1. Green fleet is not scored and there are no winners. A summary of results by race will be provided for coaching purposes, and to help sailors make the decision to move to Champion Fleet at future events.

16. SAFETY REGULATIONS

16.1. *[NP]* When flag V over flag H is displayed with one sound signal all boats shall return promptly and directly to the harbour. Further signals ashore. This changes RRS 37

16.2. RRS 37 is changed so that it applies when flag V or flag V over flag H is displayed with one sound.

16.3. *[NP]* All competitors shall Sign-out at the Race Office prior to leaving the harbor.

16.4. *[DP]* *[NP]* On water prior to the warning signal of her first race of each day competitors shall sail past the Signal Vessel and hail their sail number.

16.5. *[NP]* All boats shall return directly to the harbour and shall Sign-in after completing their last race of the day.

16.6. *[DP]* *[NP]* A boat that retires from a race shall notify the race committee as soon as possible.

16.7. Competitors who require assistance should wave one arm with hand open. If no assistance is required, the arm should be waved with fist closed.

16.8. *[NP]* Failure to comply with SI 16.3 before leaving the harbour, or with SI 16.5 by the end of protest time or by the time posted on the ONB (whichever is later) shall result in the boat receiving a 10% scoring penalty as calculated in RRS 44.3(c) added to the race score sailed nearest in time to that of the incident. This changes RRS 63.1 and A5.1. However, the race committee may protest the boat when they consider the 10% scoring penalty to be inappropriate.

17. CODE OF CONDUCT

17.1. *[NP]**[DP]* Competitors and support persons shall comply with reasonable requests from regatta officials.

18. COMMUNICATIONS

18.1. The race committee will be operating on VHF channel 11.

19. RACE OFFICE

19.1. The race office is off the lobby of the POH building.

20. [DP] REPLACEMENT EQUIPMENT

20.1. In the event of damage, boats and equipment may only be substituted with the permission of the race committee.

21. [DP][NP] HARBOUR AND SITE REGULATIONS

21.1. All boats shall be launched and hauled out as directed by the organizing authority.

21.2. At the sole discretion of the organizing authority, dollies and trailers with protrusions may be prohibited from the launch area.

21.3. No boat, except those in assigned mooring areas, shall be left unattended in the water.

21.4. Automobiles and other vehicles must be parked only in accordance with Portsmouth Olympic Harbour, the City of Kingston and the organizing authority's posted signage.



CORK / SAIL KINGSTON
SUPPORT TEAM REGULATIONS

1. General

- 1.1. These regulations apply to all Support Persons (RRS Definitions “*Support Persons*”).
- 1.2. These regulations shall apply at all times while support persons are at the venue or in the areas of Lake Ontario south of Kingston while training or competing with their teams.
- 1.3. Support personnel and support boat drivers are responsible for the control of their boat at all times. They will be held responsible for any inappropriate behaviour, dangerous actions or improper practices, or actions affecting the fairness or safety of competition. Support boats shall take particular care to minimize their wake when transiting any course areas.
- 1.4. Support persons shall comply with reasonable directions or requests of a Race Official.
- 1.5. The protest committee may call a hearing based upon information received from any source to consider whether a support person has broken a rule. As a result of the hearing the protest may take action under RRS 64.5
- 1.6. Support personnel shall not leave any device, piece of equipment, buoy, marker or similar item permanently in the water. Temporary use of floating objects is allowed for current measurement. These objects shall be removed as soon as the measurement has been taken.
- 1.7. Support boats shall accept reasonable trash/refuse from competitors, to facilitate competitors’ compliance with Rule 47.
- 1.8. Support Persons may be requested to support athletes that do not have a support person.

2. Changes to these Regulations

- 2.1. The organizing authority may change these regulations at any time. Any changes will be posted on the official notice board by 0900 on the day the changes will take effect.

3. Registration

- 3.1. Support boats and designated drivers shall register at the CORK Regatta Office before leaving the venue by water for the first time and complete online registration through CORK’s Registration System.
- 3.2. The organizing authority may, at its discretion, refuse to register support boats it does not deem to be suitable. Suitable boats are generally open boats more than 4.0m and less than 7.5m in length, and having minimal or no superstructure, i.e., cabin, coach house, bridge, etc.
- 3.3. Support boats shall be marked at all times while afloat with, depending upon the specific event, either:
 - 3.3.1. The applicable national sail letters (RRS G1.1) clearly displayed on both sides of the boat or engine in contrasting colours, with a minimum height of 200mm. Letters will not be provided by the Organizing Authority;

- 3.3.2. A support boat number flag supplied by CORK. They shall be mounted so as to be visible by other vessels. Flags are to be returned to the CORK office at the end of the event.

4. Support boat requirements

- 4.1. Each boat shall verbally confirm that they have met the following requirements at the time of registration:
- 4.1.1. Each support boat shall be insured with valid third-party liability insurance with a minimum coverage of \$1,000,000 CAD (or equivalent) per incident.
 - 4.1.2. Each support boat shall have readably available:
 - 4.1.2.1. a VHF radio capable of transmitting and receiving on Ship-to-Ship International channels;
 - 4.1.2.2. a floating tow rope (minimum 15m long and 10mm thick);
 - 4.1.2.3. a first-aid kit
 - 4.1.2.4. a knife, suitable for cutting the rigging or sails used on the class of vessel supported
- 4.2. The organizing authority may request to inspect a support boat at any time to ensure that they meet these requirements. The person responsible for the boat shall facilitate such inspection.

5. Canadian boating laws

- 5.1. Support persons are advised that federal, provincial and local laws specify required safety equipment. These laws are enforced by federal, provincial and local agencies and violations may result in required court appearances and fines. Required equipment may include: PFDs for all passengers, bailers, paddles, anchors, buoyant heaving lines, sound signaling devices, fire extinguishers, compass, charts, navigation lights, flares, etc. Details are specified in the (Canada) Safe Boating Guide, available at:
<http://www.tc.gc.ca/media/documents/marinesafety/TP-511e.pdf>
- 5.2. Canadian law also requires:
- 5.2.1. Persons driving a pleasure boat in Canada to have a motorboat driving license appropriate for their country of residence,
 - 5.2.2. Anyone using a VHF radio to have a maritime radio operator's certificate appropriate for their country of residence.

6. Portsmouth Olympic Harbour Venue

- 6.1. Support boats shall use the designated ramps for launching. Once launched, trailers shall be moved immediately to the trailer park or as otherwise directed by the organizing authority.
- 6.2. When not in use, support boats shall be appropriately berthed at the sailing venue in the allocated areas for support boats for the time that these Support Team Regulations apply (see Appendix A). Larger support boats may need to request and pay for a slip from the Marina.
- 6.3. Support boats shall give priority to competitor boats when launching or retrieving.
- 6.4. Support boats shall comply with local harbour and marina regulations, including speed limits and wake restrictions.

7. Safety

- 7.1. Team leaders are responsible for knowing who is afloat and ensuring their safe return to the venue.
- 7.2. If the support boat is equipped with a kill switch device, when the support boat engine is running drivers shall be connected to this device (e.g. "kill cord") that will stop the engine if the boat driver falls out of the boat or steps away from the engine controls.

8. Drones

- 8.1. The use of drones is prohibited unless specific permission is requested and granted by the CORK Office. It should be noted that the venue and sailing areas are close to an airport, and permits from Transport Canada will also be required.**

9. Restricted Areas and Movement

- 9.1. Support boats shall stay outside areas where boats are racing and shall not be:**
 - 9.1.1. closer than 50m to any boat racing;**
 - 9.1.2. within 50m to leeward of the starting line or within 50m of its marks from the time of the preparatory signal until all boats have left the starting area; however, when the Race Committee signals a postponement or abandonment, and until the next preparatory signal, support boats may enter the area to leeward of the start line and its extensions to service their athletes but shall restrict their speed to 5 knots;**
 - 9.1.3. between any boat racing and the next mark of the course;**
 - 9.1.4. between the inner and outer trapezoid courses when boats are racing on both courses;**
 - 9.1.5. within 50m of any mark of the course while boats are in the vicinity of that mark;**
 - 9.1.6. within 50m of the finishing line and marks while boats are finishing.**
- 9.2. Support boats should proceed around the racing area in such a way to minimize the effect their wash will have on boats racing and on race committee vessels. Boats that are motoring above five knots shall remain at least 150m from any boat racing and race committee vessels.**

Appendix A: Venue Map showing Launch Ramps and Support Boat mooring Areas

CORK: POH Venue Site Map 2023

