



**IMYC**  
INTERNATIONAL MEDITERRANEAN YACHT CHAMPIONSHIP



**INTERNATIONAL  
MEDITERRANEAN  
YACHT CHAMPIONSHIP  
COURSES  
01-05 MAY 2024**

**IMYC**  
**INTERNATIONAL MEDITERRANEAN YACHT CHAMPIONSHIP**

\*RC Vessel(s), Marks and buoy's locations for the races and the courses will be approximately and shall not be grounds for a request for redress.



## COURSE #1

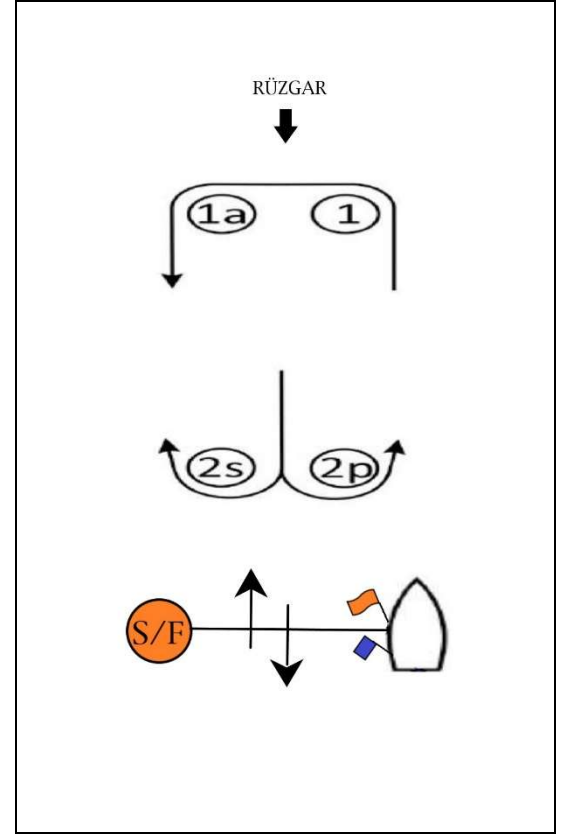


Distance: ~ 6 nm.

Time Limit: 90 min.

### Course Description

Start- #1- #1 a- 2 s/p- #1- #1 a- Finish



## COURSE #1-E

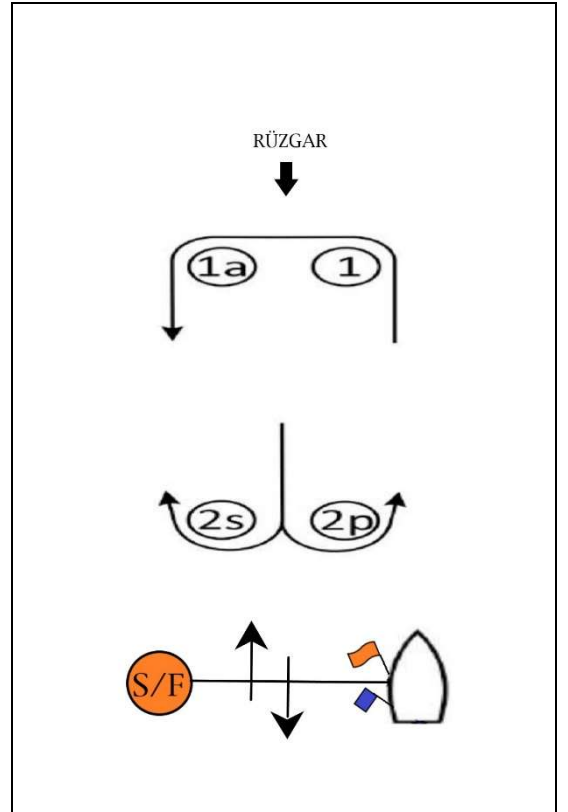


Distance: ~ 9 nm.

Time Limit: 120 min.

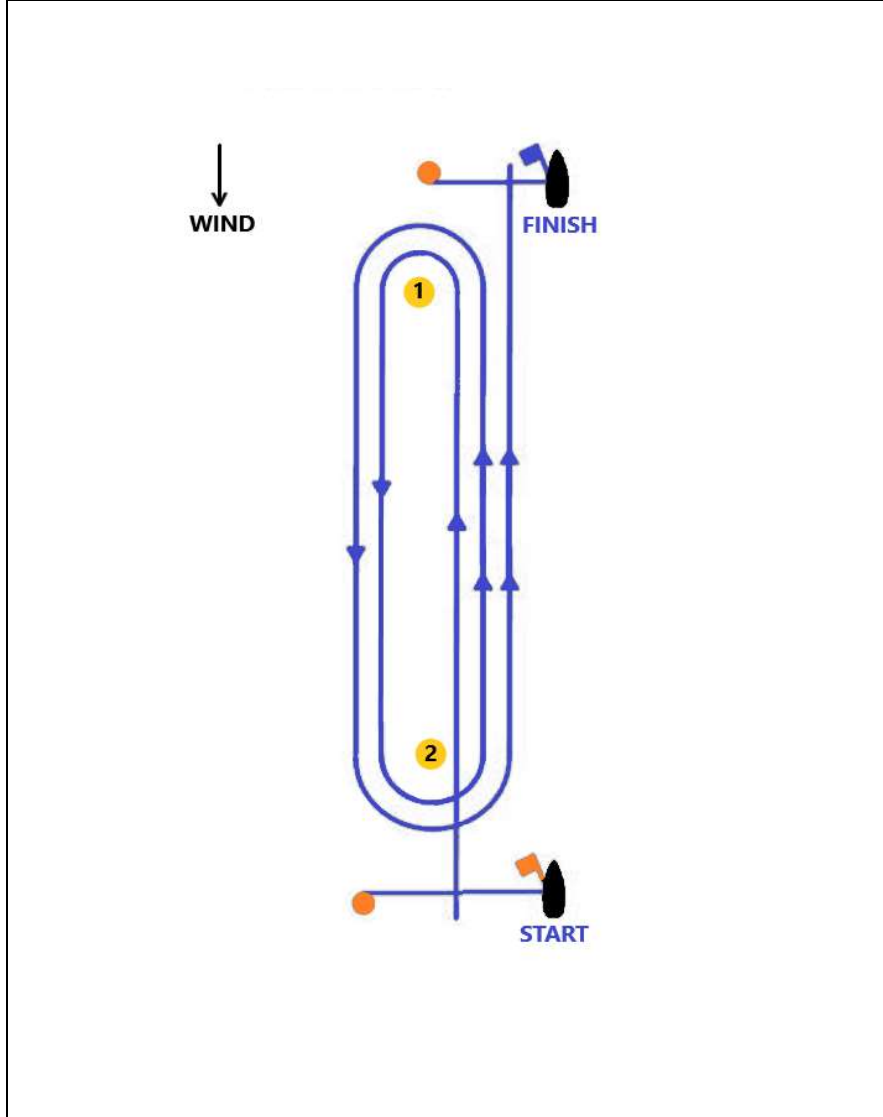
### Course Description

Start- #1- #1 a- 2 s/p- #1- #1 a- 2 s/p-  
#1- #1 a- Finish





## COURSE #2



**Distance: ~ 6nm.**

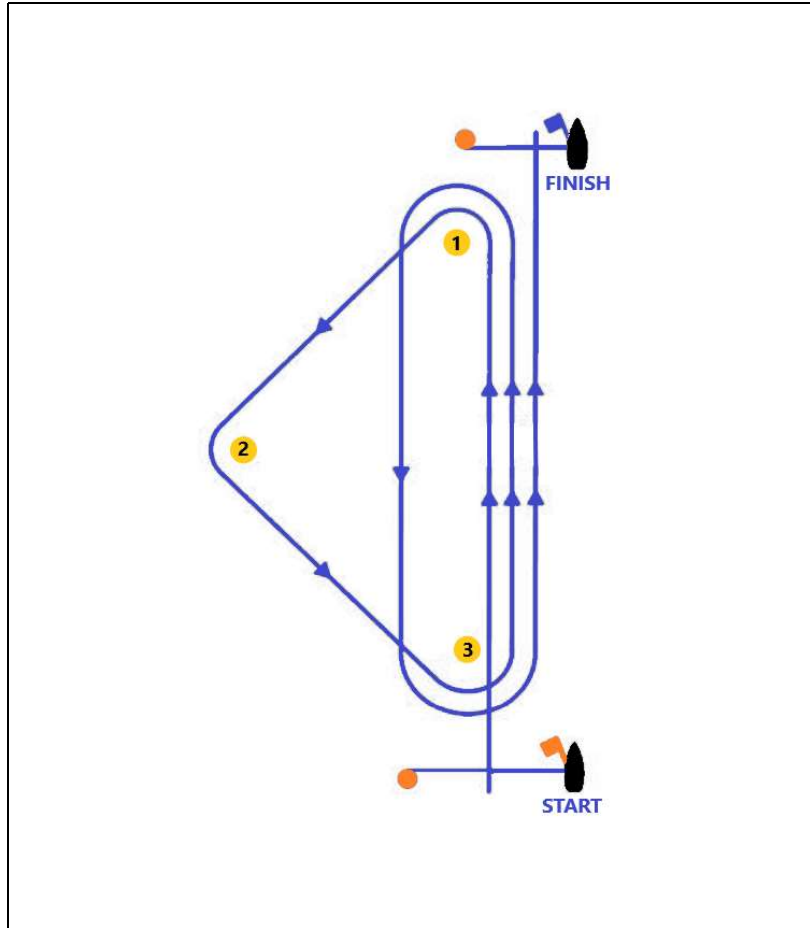
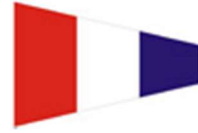
**Time Limit: 90 min.**

**Course Description**

**Start- #1- #2- #1- #2- Finish.**



## COURSE #3



**Distance: ~ 8 nm.**

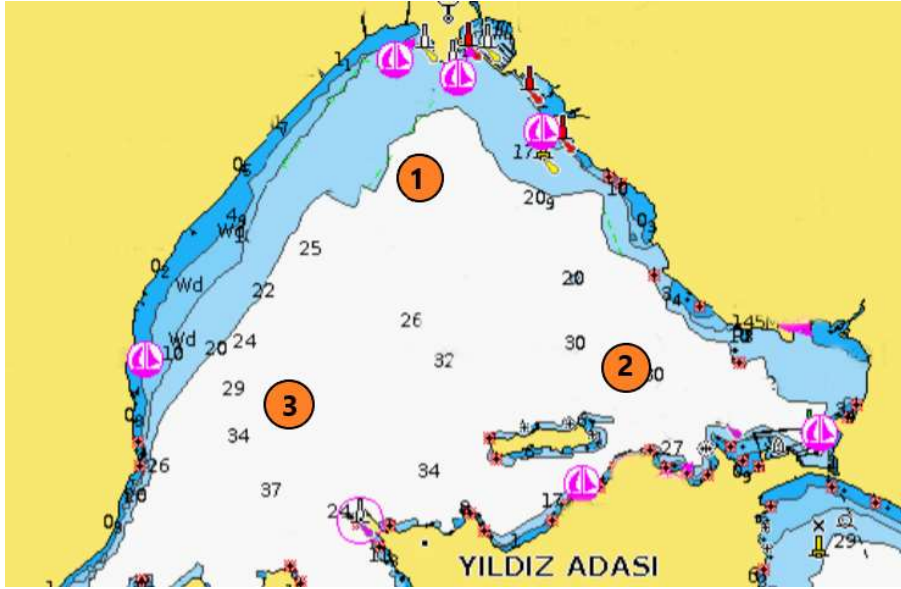
**Time Limit: 120 min.**

### **Course Description**

**Start- #1- #2- #3- #1- #3- Finish.**



**M.I.Y.C Classical  
COURSE #4**



**Distance: ~ 8 nm.**

**TIME LIMIT: 120 min.**

**MARKS AT STARBOARD**

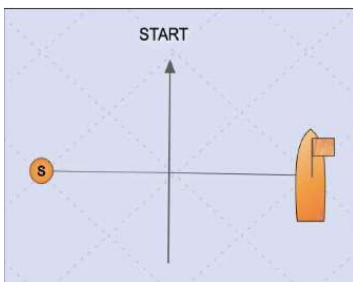
- ALPHA S(1)-2-3-1-2-F(1)
- BRAVO S(2)-3-1-2-3-F(2)
- CHARLIE S(3)-1-2-3-1-F(3)

**MARKS AT STARBOARD**

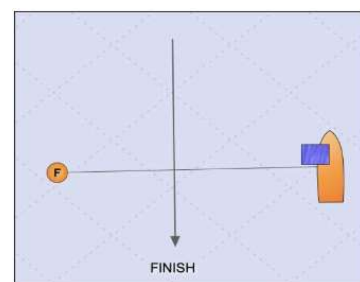
- DELTA S(1)-3-2-1-3-F(1)
- ECHO S(2)-1-3-2-1-F(2)
- FOXTROT S(3)-2-1-3-2-F(3)

**Start/ Finish Line may be positioned (or set) behind the numbered marks.**

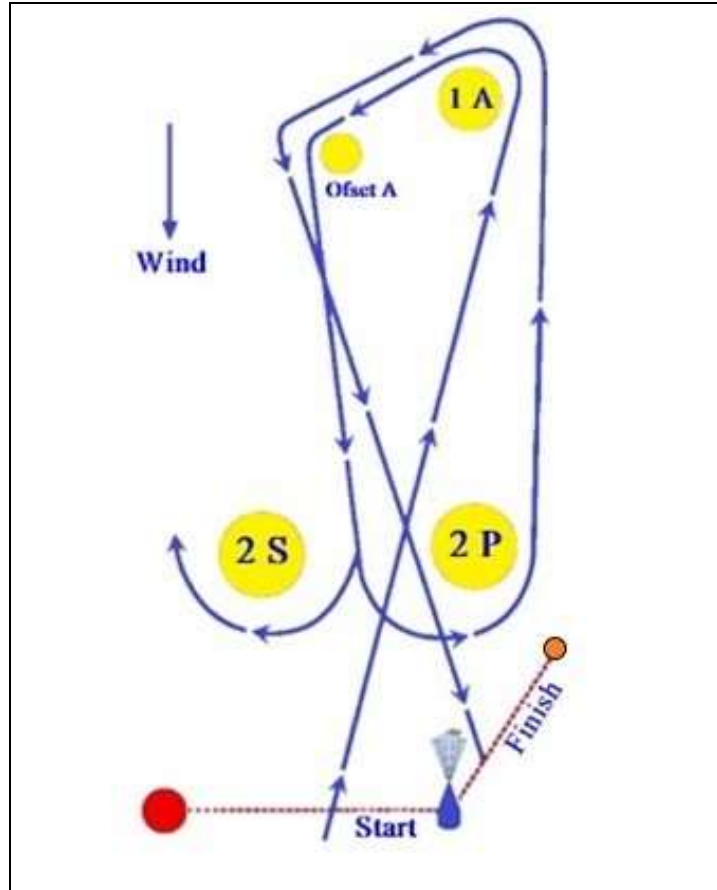
**PIN END ON PORT (START)**



**PIN END ON STARBOARD (FINISH)**



## Course #5 WW-LW



**Distance: ~ 6nm.**

**Time Limit: 90 min.**

### **Course Description**

**Start- #1- #1 a- 2 s/p- #1- #1 a- Finish.**