

ff

41
EDITION

**COPA
DEL REY** RCNP

MAPFRE

29 julio
july

05 agosto
august

2023

**SAILING
INSTRUCTIONS**

In all the rules governing this event [NP] denotes a rule that shall not be grounds for protest between boats. This changes RRS 60.1 (a).

1. RULES

- 1.1 The regatta will be governed by the rules indicated in point 1 "Rules" of the Notice of Race and its amendments, if applicable.
- 1.2 For the CS 50, CS 42, J70 and WCC Classes Appendix UF applies (it will be handed separately).
- 1.3 [NP][DP] Due to safety reasons it is completely forbidden the use of aerial drones in the club and its surroundings ((Reglamento de Ejecución UE 2019/947 and RD 1036/2017). The use of drones will be allowed in the racing areas only if they are in possession of the required authorisations and have registered at the Race Office before 10 hours of the day they will operate. Any drone flying without authorisation and recognised by the Race Committee will be reported to the authorities.
- 1.4 [NP][DP] All competitors and support persons shall follow any reasonable instruction given by a race official or the Organising Authority.

2. NOTICES TO COMPETITORS AND CHANGES TO THE SAILING INSTRUCTIONS.

- 2.1 Notices to competitors will be posted on the Official Notice Board (ONB) on the website of the event:

<https://www.regatacopadelrey.com/toa/toa-virtual.php?ln=uk>

These and any other notices may be posted when possible through Telegram channel, specially created for the occasion. A failure in the emission or reception of this publication will not be grounds for redress. (This changes RRS 62.1. (a)). To connect with this channel we invite you to use the following link:

<https://t.me/copadelreymapfre>

- 2.2 The Race office will be allocated next to the Real Club Náutico de Palma outdoor swimming pool (Appendix 5).
- 2.3 Any change to the sailing instructions will be posted on the Official Notice Board before 10 hours on the day it will take effect, except that any change to the schedule of races will be posted before 20.00 hours on the day before it will take effect.
- 2.4 At sea, the race committee will broadcast and receive on the following channels:

: **Alpha Area: VHF 11**
 Bravo Area: VHF 68
 Charlie Area: VHF 71

3. SIGNALS MADE ASHORE

- 3.1 Signals made ashore will be displayed on the Main Flag Pole (MFP) located on the main terrace of the Club house by the swimming pool. (Appendix 5)
- 3.2 When code flag AP is displayed ashore, "1 minute" is replaced with "not less than 60 minutes" in Race Signal AP. This changes RRS Race Signals AP.



4. SCHEDULE OF RACES, AREA ASSIGNMENT AND COMPETITION FORMAT

4.1 The intended programme and schedule of races is set out below, but the Race Committee reserves the right to change the schedule at its discretion, taking into account weather conditions or all other factors which may impact the evolution of the event and in accordance with S.I. 2.3

CLASS	31 July Monday	1 August Tuesday	2 August Wednesday	3 August Thursday	4 August Friday	5 August Saturday	Nº RACES
CS 50- CS 42	12.00 Races	12.00 Races	12.00 Races	12.00 Races	12.00 Races	12.00 Races	12
ORC	12.00 Race/s	12.00 Race/s	12.00 Race/s	12.00 Races	12.00 Races	12.00 Races	12
J-70 Women Cup Class (WCC)	14.30 Practice Race	12.00 Races	12.00 Races	12.00 Races	12.00 Races	12.00 Races	14

The racing format (coastal or windward/leeward courses) and each day's area assignment for all Classes, will be posted on the Official Notice Board (ONB) before 20:00 hours of the day before it will take effect.

A maximum of three races may be sailed per day.

The warning signal for a subsequent race on the same day, will be given as soon as possible. To alert boats that a race or sequence of races will begin soon, the orange starting line flag will be displayed with one sound at least 5 minutes before a warning signal is made.

The Race Committee will try to broadcast by VHF its intention to sail another race. A failure in the emission or reception of the broadcasting will not be grounds for redress. (This changes RRS 62.1 (

a).

On the 5 August 2023 no warning signal will be made after 15:45 hours.

4.2 The skippers briefing will be held:

CLASS	PLACE	DATE
ORC	Press room	Sunday 30 July, 2023 at 18.30
CS50- CS42	Press room	Sunday 30 July 2023 at 19.00 .
J70-WCC	Press room	Sunday 30 July 2023 at 19.30

4.3 Competition format:

- 4.3.1 A maximum of 12 races (14 for J70 and WCC classes) are scheduled, will be distributed in a Preliminary Series of 6 races and a Final Series of 6 races (8 for J70 and WCC classes).
- 4.3.2 A Preliminary Series will take place for all classes on the 31 July, 1 and 2 August 2023 (1 and 2 August 2023 for J70 and WCC classes).

Classes that have completed a minimum of 4 races by the 2 August, will sail Final Series on the 3, 4 and 5 August 2023. Otherwise, Final Series will not be sailed and boats will race for a Previous Series till the end of competition.

5. RACING AREAS

5.1 Races will be sailed in Palma Bay Waters. Approximate position of the Area's centre is as follows:



AREA	POSITION	COLOUR
ALFA	39° 31,846 N- 002° 40,233 E	RED
BRAVO	39° 29,900 N- 002° 42,174 E	YELLOW
CHARLIE	39° 29,566 N- 002° 38,946 E	GREEN

5.2 [NP][DP] Boats sailing or crossing a non-assigned area will have to remain clearly separated from the boats competing and the official boats of that area.

6. COURSES & SHORTENED COURSES.

- 6.1 **Windward/leeward Courses:** The Appendix 1 shows the courses, including the course signals, the order in which the marks are to be passed or rounded, and the side on which each mark is to be left.
 - 6.1.1 The leeward gate may be substituted by a single mark, in this case the mark is to be left to port. This mark will not be considered as a gate and RRS 18.4 applies.
 - 6.1.2 No later than the warning signal the Race Committee will signal the course number (by displaying the corresponding numeral pennant) and the magnetic bearing and length of the first leg and will broadcast this information via VHF. Omission or failure in the radio transmission or reception of that communication shall not be ground for a request for redress. (This changes RRS 62.1(a))
- 6.2 **Coastal Races:** Not later than two hours before the warning signal, the course to be sailed will be published on the ONB, indicating the order in which the marks defined in the Appendix 2 are to be passed or rounded, and the side on which each mark is to be left.

Approximately at the middle of the course, the Race Committee will set a Mandatory Waypoint Gate (MWG). The MWG is defined between a race committee vessel displaying an area color flag and the established mark. It is mandatory that all the boats go through the MWG from the direction of the course.



6.3 The position of the marks in the Appendix 1 and 2 are approximate. A different position shall not be grounds for a request for redress. To the effects of the corrected time, the marks' real position will be considered when calculating the distance of the legs. (This changes RRS 62.1(a)).

6.4 SHORTENED COURSES:

6.4.1 **Windward/leeward races** may be shortened at any mark, only when a minimum of three legs have been sailed (two upwind and one downwind), excluding the leg from mark 1 the offset of each course. The time limit remains the same as for the original course.

6.4.2 **The coastal race** will not be shortened. The race committee will take each boat's time and position at the Mandatory Waypoint Gate. If no boat finishes the race within the time limit, or the race is abandoned after at least one boat has crossed this Mandatory Waypoint Gate, boat's time and position taken at this mandatory waypoint shall be used to score the race (Change RRS 32.1, 36, A3, A4, A5).

7. MARKS

7.1 Windward/Leeward Courses:

Marks 1A, Offset A Marks 1C, Offset C 2G	Marks 1B and Offset B	News marks	Wi mark	Starting marks	Finishing Marks
Inflatable Yellow	Inflatable Orange	Inflatable Red (Courses A) Inflatable Black (Course B) Inflatable Yellow (Course C)	Inflatable Red	RC vessel and pin end boat or inflatable Red mark	RC vessel and a Buoy with a blue flag

7.2 A Race Committee vessel announcing a change of course is considered as a course mark, as indicated on SI 9.2.

7.3 Coastal courses:

Course marks	Starting line mark	Finish line mark
See Appendix 2	RC vessel and pin end boat or inflatable Red mark	Buoy with an orange flag



8. THE START, CLASS FLAGS

8.1 Class Flags:

CLASS	FLAG
ORC 1	Code flag "T"
ORC 2	Code flag "R"
ORC 3	Code flag "K"
ORC 4	Code flag "W"
Club Swan 50	Class logo on white background
Club Swan 42	Class logo on blue background
J70	Code flag "J"
WCC	Code flag "E"

[NP][DP] ORC boats class flags shall be displayed on the backstay at least 1,5 meters above deck at all times, while racing, or on the stern pulpit if the boat does not have a backstay.

- 8.2 The starting line will be between the staff on the Race Committee boat at the starboard end of the line and the staff on the pin boat or an inflatable RED mark on the port end. Both staff will display an orange flag.
- 8.3 A boat starting later than four minutes after her starting signal will be scored did not start (DNS) without a hearing. This changes RRS A4 and A5.
- 8.4 In addition to RRS 29.1 & 29.2 individual and general recalls may be communicated by radio VHF. In such case, bow numbers, sail numbers or boat names may be called out for their identification. Delay in the radio communication of these calls, or the order in which they are made, or any omission or failure in the emission or reception of these, shall not be grounds for a request for redress. (This changes RRS 62.1(a)). This rule does not reduce, modify or exonerate each boat's responsibility to start in accordance with the RRS.
- 8.5 [NP][DP] Boats, whose warning signal has not been made, shall avoid the starting area, which is defined as the rectangle covering an area of 200 metres to leeward and to windward of the starting line, and 100 metres outwards of each end of the line.

9. CHANGE OF POSITION OF THE NEW MARK AND CHANGE OF DISTANCE OF THE NEW LEG.

- 9.1 To change the next leg of the course, the race committee will a) lay a new mark, b) move the leeward gate or c) move the finish line. In case a new mark has been laid, the original one will be removed as soon as practicable. In case the finishing line is moved, the race committee boat could be a RIB displaying a blue flag.
- 9.2 Except at a gate, boats shall sail between the Race Committee boat signalling the change of course and the nearby mark, leaving the mark to port and the Race Committee boat to starboard. This changes RRS 28.1 and 33 .
- 9.3 In case of a change of course to windward, the offset mark of each course will be repositioned and mark Wi will be removed in course C.
- 9.4 Any change to the position of the leeward gate or the finish line will be signaled at the Offset mark of each course. For course C, this does not change the obligation to leave Wi to port if it is in place



10. THE FINISH.

- 10.1 The finishing line will be between a staff on board the Race Committee boat and a buoy, both displaying a blue flag.
- 10.2 [NP][DP] When crossing the finishing line after the sunset, or in poor visibility conditions, every boat shall highlight her sail number or bow number with a powerful torch and shall identify herself to the race committee by VHF.

11. PENALTIES

- 11.1 RRS 44.1 is changed so that only one turn is required instead of two turns.
- 11.2 [NP][DP] A boat that accepts a penalty or has retired in accordance with rule 44.1, must complete an online acknowledgment filling out an infringement form before the protest time limit.

<https://www.regatacopadelrey.com/toa/toa-virtual.php?ln=uk>

12. TIME LIMITS

Time limits will be as follows::

- 12.1 **ORC** The time limit for each boat is calculated as follows:

$$(1,2 * ((\text{BEAT VMG6} + \text{RUN VMG6}) / 2) * M (\text{course distance}))$$

- 12.2 For the classes competing on corrected time, those boats who finish after the time limit will be scored DNF, without a hearing. This changes RRS 35, A4 and A5.

12.3 One Design:

12.3.1

Class	Time limit	Mark 1 Time limit	Finishing Window
CS50- CS42	90´	30´	15´
J70 WCC	75´	25´	15´

- 12.3.2 If no boat has passed Mark 1 within the Mark 1 Time Limit the race will be abandoned.

- 12.3.3 Boats failing to finish within time stated under (Finishing Window) after the first boat of the class sails the course and finishes will be score DID NOT FINISH without a hearing. This changes RRS 35, A5.1 and A5.2

13. [NP][DP] BOAT THAT RETIRES, ABANDONS OR DOES NOT COME TO THE STARTING LINE.

- 13.1 A boat that retires after finishing (RET) shall lodge a online retirement form, as well as comply with 13.2 if applicable. <https://www.regatacopadelrey.com/toa/toa-virtual.php?ln=uk>

- 13.2 A boat that did not come to or leaves the racing area at any moment, whether before or after starting (DNC, DNS, RET or DNF), shall inform the race committee by any means and shall inform the race office as soon as reasonably possible.

14. HEARING REQUESTS

- 14.1 Hearing requests shall be submitted by using the online system available at ONB. This changes RRS 61.2, 61.3, 62.2 and 66
https://www.racingrulesofsailing.org/protests/new?event_id=6528
- 14.2 In each class, the protest time limit is 90 minutes after the last boat in the last race of the day finishes or the Race Committee signals no more racing for the day, whichever is later.
- 14.3 Notices will be published no later than 30 minutes after the protest time limit to inform boats of hearings in which they are parties or named as witnesses. Hearings may be scheduled to begin before the end of protest time. Hearings will be held beginning at the time and location published on the ONB”.
- 14.4 For the purpose of RRS 64.3 (b) the authority is the RFEV Race Officials Committee.
- 14.5 Decisions of this International Jury will be final as provided in RRS 70.5
- 14.6 Penalties for breaches of RRS 50 and 78.1, class rules, rules in the Notice of Race or Sailing Instructions marked ‘[DP]’, are at the discretion of the international jury”.

15 SAFETY REGULATIONS. [NP][DP]

- 15.1 In an emergency, boats requiring assistance should call the Race Committee on VHF area channel assigned (S.I. Appendix 3 On water Emergency Procedures).
- 15.2 While racing, only crew members listed on the crew list provided by the boat during registration or any authorized change thereof, shall be carried on board.
- 15.3 All boats shall return only to their allocated moorings.
- 15.4 Boats arriving for any reason at a point ashore other than the ones or that cannot reach the harbour on their own are requested to report immediately to:
- Real Club Náutico de Palma phone: 00 34 971 726848 VHF 9
 - Safety coordinator: phone: 00 34 605 825462 VHF 72
- 15.5 To facilitate search and rescue operations any boat requiring assistance shall inform of her position and external identification details.
- 15.6 To facilitate the evacuation of an injured crew member, boats are requested to signal their position to the rescue services by using an orange smoke flare.
- 15.7 All competitors shall carefully comply with this sailing instruction 15. SAFETY REGULATIONS. Otherwise they can be requested to pay the expenses of search and rescue operations.
- 15.8 Safety zones as defined in Appendix 4 (applicable to WL races, the WL start and possible first part of coastal races) shall be respected from the warning signal till the day’s racing is finished. During coastal races support boats shall not interfere with any boat racing. Requests or instructions given to support boats by the RC, event measurer or jury members shall be followed.



16. SCORING

- 16.1 The RRS Appendix A scoring system will apply with the following changes.
- 16.2 Boats sailing only a Preliminary Series: The total score of each boat will be the overall sum of its results, except when 6 or more races have been sailed (8 or more races for J70 and WCC), the total score of each boat will be the sum of all its points, discarding the worst score.
- 16.3 Boats sailing a Preliminary and a Final Series:

For the Preliminary Series, the total score of each boat will be the sum of all its points. There will be no discard. The preliminary series result will count as the first race result for the final series. For the Final Series, the total score of each boat will be the total of her race scores in the Final Series. No discard will apply in the Final Series. The overall result will be the Final Series one.

17. [DP] CREW REPLACEMENT.

Changes to crew list (adding new crew members, replacing or disembarking crew members) shall be made in writing to the Race Committee indicating the name and I.D. or Passport number of the substitute crew member and shall be lodged at the race office before 10:30 hours of each day, but in case of emergency, it can be communicated at the first reasonable opportunity, and in any case, within the protest time limit. Only substitutions approved by the Race Committee will be accepted. Substitutes may be subject to weight control. The substituted crew member shall not be on board on any other competing boat throughout the remainder of the series.

18. OFFICIAL BOATS IDENTIFICATION.

- 18.1 The official boats will be identified by displaying flags as follows.

Race Committee Boats	Colour Area flag
Jury Boats	Orange/Yellow flag
Technical Committee Boats	White flag with a "M"
Press and auxiliary Boats	White flag with "Press"

19. [NP][DP] SUPPORT BOATS.

Support boats must be identifiable to the participating boat they support. They shall stay outside of the safety zone (as defined in appendix 4) from the time of the preparatory signal for the first start until all boats have finished or the race committee signals a postponement, general recall or abandonment. All support boats must register at the race office during the registration confirmation period. (CS50/CS42 Class rules will apply).

20. [NP][DP] HAUL-OUT RESTRICTIONS

Boats shall not be hauled out before 18.00h of the previous day of the first warning signal, except with and according to the terms of prior written authorisation of the race committee.



21. [DP] TRASH DISPOSAL

Boats shall not put trash in the water. Trash may be placed aboard support boats and then disposed in the containers on land

22. [NP][DP] MEASUREMENT AND EQUIPMENT CONTROLS. SAIL NUMBERS AND TRACKING DEVICE.

22.1 On the water, a boat can be instructed by a Technical Committee measurer to proceed immediately to the measurement control area.

22.2 Once the provisional results of the day have been published for the first time, the Technical Committee will publish on the ONB the list of boats to be controlled.

The Person in charge will come to the Technical Committee Chairman immediately, to be assigned a measurement control time and place.

The boat responsible is committed to verify whether his boat has been appointed for measurement control.

22.2.1 Measurement controls:

- Afloat: at the finishing line, during the races, without previous notice on the Official Notice Board (ONB).
- Ashore: at the end of the last race of the day, the boats required to remain at the disposal of the measurement committee, will be published on the ONB.
- The boats will be selected as follows:
 - a) Boats in each group or division selected by Technical Committee, and the first boat overall in each group or division.

22.2.2 Any of the following measurement checks may be performed:

- a) Before the start of the races,
 - Under consideration of the Technical Committee (IRC-ORC)
 - One design, sails stamping and crew weighing

- b) At the finishing line or during the races (without previous notice on the ONB)
 - Crew control
 - Sail inventory and sails stamp checking
 - Heavy items and safety declarations checking.
 - The measurer may seal under its criteria, any part or element of the boat, which may be controlled ashore after being published on the ONB.
 - Safety elements.



c) Ashore: at the measuring area with previous notice on the Official Notice Board.

- Sail measurements
- Rig
- Freeboards and overhangs (ORC)
- One design: crew control (I.D.)
- Boat weighing.(All Classes or groups)

22.3 At least two crew members and a person in charge shall be present during the measurement checks. all measurers, while been carried out, will have two readings: measurers and owner or representative.

22.4 The boats will register and use the sail number indicated in its Valid Measurement Certificate, unless written authorization has been given by the Principal Race Officer. (This change RRS A5.1 and A5.2).

Boats not complying with this instruction may be classified as “Did not compete” (DNC) in the race (s) without a hearing. This sailing instruction changes rules 63.1 and G4 of the RRS.

22.5 Each participating boat may be requested to carry a tracking or positioning system device. The cost of the installation of these devices will be of the organizers, although the crew must help at all times in the correct installation and use during the regatta, by following the instructions handed out during the registration confirmation and the skippers briefing.

23. TROPHIES

The prize list will be posted on the Official Notice Board (ONB).

24. DISCLAIMER OF LIABILITY.

All those taking part in the regatta do so at their own risk and responsibility. See RRS 3 Decision to Race.

The organizing authority and all parties involved with the organization of the event will not accept any liability for material damage or personal injury or death sustained in conjunction with or prior to, during, or after the regatta.

25 [NP] LOCAL MARINE REGULATIONS

The Real Decreto 62/2008 states the conditions of maritime safety, navigation and life at sea applicable to nautical sports events.

Competitors are alerted that boats can only participate if they are dispatched in accordance with the administrative regulations for navigating the waters where the race will be sailed.

Competitors must declare, with adequate prior to the beginning of the event, the insurances subscribed to participating in nautical sports events, including the risks covered and the liability limits as required in the Notice of Race.

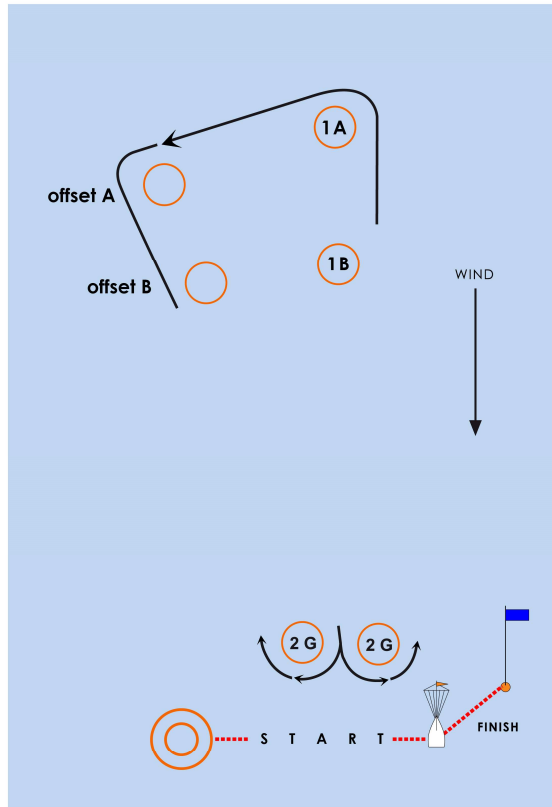
The Real Club Nautico de Palma informs all participants that it holds a third party liability insurance policy of 6.000.000 euros. It is each boat’s responsibility to be in possession of the complementary insurances it deems convenient, besides the requirements of Rule 6.10 b) of the Notice of Race



APPENDIX 1. WINDWARD/LEEWARD COURSES

COURSE A (Code Flag Pennant 1): Start –1A – Offset A – 2G – 1 A– Offset A – Finish.

COURSE B (Code Flag Pennant 2): Start –1B – Offset B – 2G – 1B – Offset B – Finish.



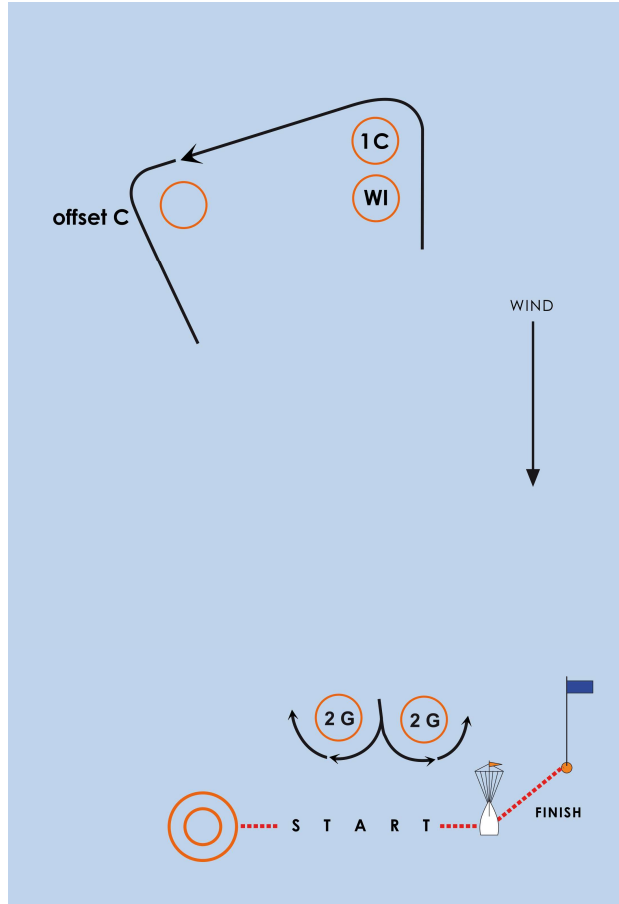
- Except at a Gate all course marks shall be left to port. When at the gate there is only one mark this one shall be rounded to port (SI 6.1.1).
- Distance between Race Committee and mark 1A and 1B: See S.I 6.1.2
- Distance between starting line and gate: 0.2 Nm approx.
- Distance between mark 1A or 1B and mark offset A or offset B: 0.1 Nm approx.
- Angle between mark 1A or 1B and mark offset A or offset B: 100°
- Distance between gate marks: 10 boat lengths.
- Distance between committee boat and finishing mark: 150 m approx.
- The bearing to the windward mark and right side of the gate (when looking from leeward to windward) will be considered from Race Committee

Note: This drawing is a schematic. The distances and mark positions are not to scale. This information is approximate. A different distance of the leg or bearing shall not be grounds for a request for redress.



APPENDIX 1. WINDWARD/LEEWARD COURSES

COURSE C (Code flag Pennant 3): Start –Wi- 1C – Offset C – Wi- 2G – Wi- 1C– Offset C –Wi- Finish.



- Except at a Gate all course marks shall be left to port. When at the gate there is only one mark this one shall be rounded to port (SI 6.1.1).
- Distance between the Race Committee and mark 1C: See S.I 6.1.2
- Distance between starting line and gate: 0.2 Nm approx.
- Distance between mark WC and mark 1C: 100 mts approx.
- Distance between mark 1C and mark offset C: 0.1 Nm approx.
- Angle between mark 1C and mark offset C or offset D: 100°
- Distance between gate marks: 10 boat lengths
- Distance between Race Committee boat and finishing mark: 150m approx.
- The bearing to the windward mark and right side of the gate (when looking from leeward to windward) will be considered from Race Committee

Note: This drawing is a schematic. The distances and mark positions are not to scale. This information is approximate. A different distance of the leg or bearing shall not be grounds for a request for redress.



APPENDIX 2. COASTAL COURSES

MARKS INFORMATION : See SI 6.3

MARK	ROUNDED	DESCRIPTION	APROX. LOCATION
Starting line	Port and Starboard	S.I 7.1	Assigned Area
1A and Offset A Marks	Port	Inflatable Yellow mark	As described in Appendix 1.
1B and Offset B Marks	Port	Inflatable Orange mark	As described in Appendix 1.
2G (Gate)	Port and Starboard	Inflatable Yellow mark	As described in Appendix 1.
Variable Mark	TBD	Inflatable Orange mark	TBD
Sech island	TBD	Island	39°28,596N- 002°32,442E aprox.
Porrassa Mark	TBD	Inflatable Yellow mark	39°30,281N- 002°33,180E
Illetas Mark	TBD	Inflatable Yellow mark	39°31,689N- 002°35,881E
Santa Ponsa Mark	TBD	Inflatable Yellow mark	39°30,529N- 002°25,474 E
Toro Mark	TBD	Inflatable Yellow mark	39°27,343N- 002°28,549 E
El Toro island	TBD	Island	39°27,703N- 002°28,285E aprox.
Malgrats islands	TBD	Islands	39°29,682N- 002°26,847E aprox.
BAHIA Mark	TBD	Inflatable Yellow mark	39°25,194N- 002°35,554E
Enderrocat Mark	TBD	Inflatable Yellow mark	39°28,426N- 002°42,457E
Regana Mark	TBD	Inflatable Yellow mark	39°24,790N- 002°43,677E
Cabo Blanco Mark	TBD	Inflatable Yellow mark	39°19,739N- 002°46,702 E
S´Estañol Mark	TBD	Inflatable Yellow mark	39°21,039N- 002°53,418 E
Sa Rapita Mark	TBD	Inflatable Yellow mark	39°20,985N- 002°56,582 E
Finishing line	Port and Starboard	S.I 7.1	TBD



APPENDIX 3. ON WATER EMERGENCY PROCEDURES

The Organizing Committee, has established emergency procedures to provide help in the event of an on the water emergency, including injury requiring medical assistance. We also have emergency numbers should there be an accident or injury on shore.

- 1.Contact the Race Committee immediately on VHF assigned área or by Mobile +34.605 825 462 (safety coordinator).
2. Identify your yacht, the nature of the emergency (type of injury, number of people injured), and your yacht's position.
- 3.The Race Committee will alert on water safety boats and may direct you to another VHF channel or mobile phone for further communication.
- 4.Proceed at best speed to a designated rendezvous point as directed.
- 5.Depending on the nature and severity of the injury, should this be the emergency, safety boat personnel may come aboard your yacht to administer aid, evacuate the injured party and/or re-direct you for transfer of the injured person.
- 6.You are asked to cooperate fully with the Race Committee, local law enforcement and emergency personnel direction.

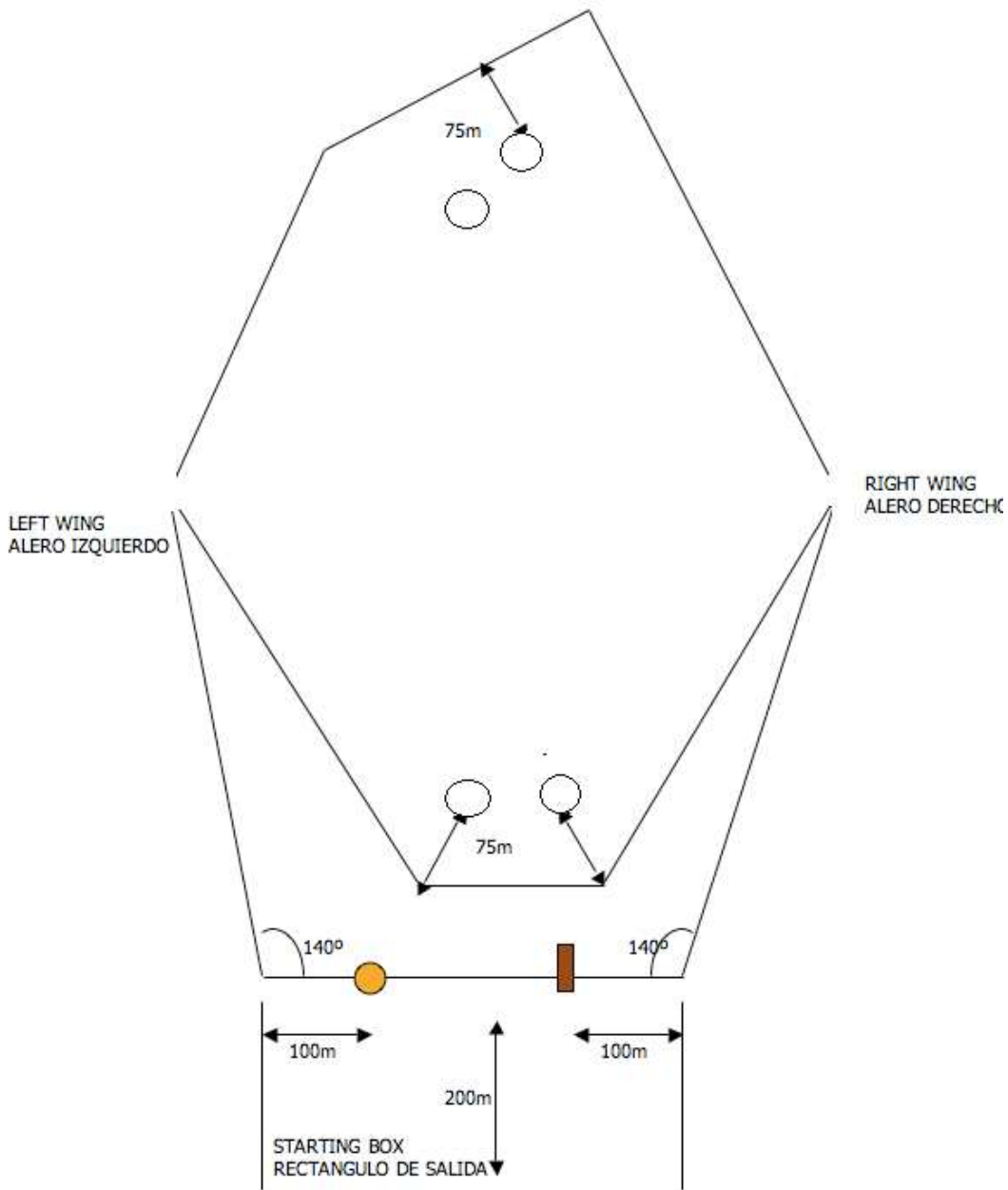
Please take the time to review these procedures with your crew prior to the race.

EMERGENCY AND MEDICAL NUMBERS

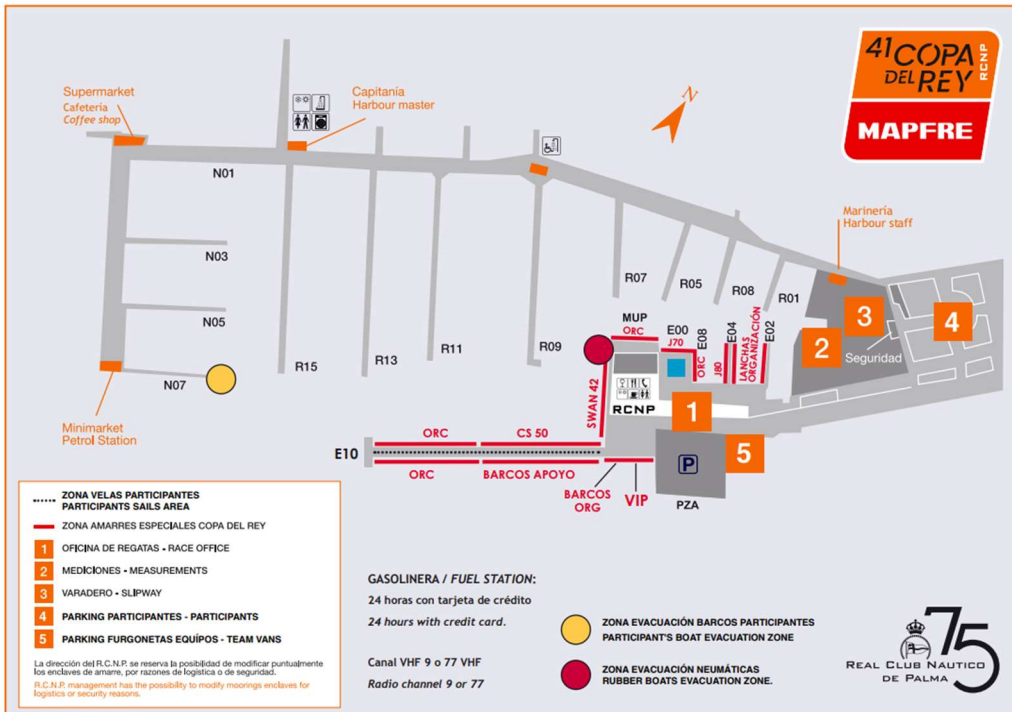
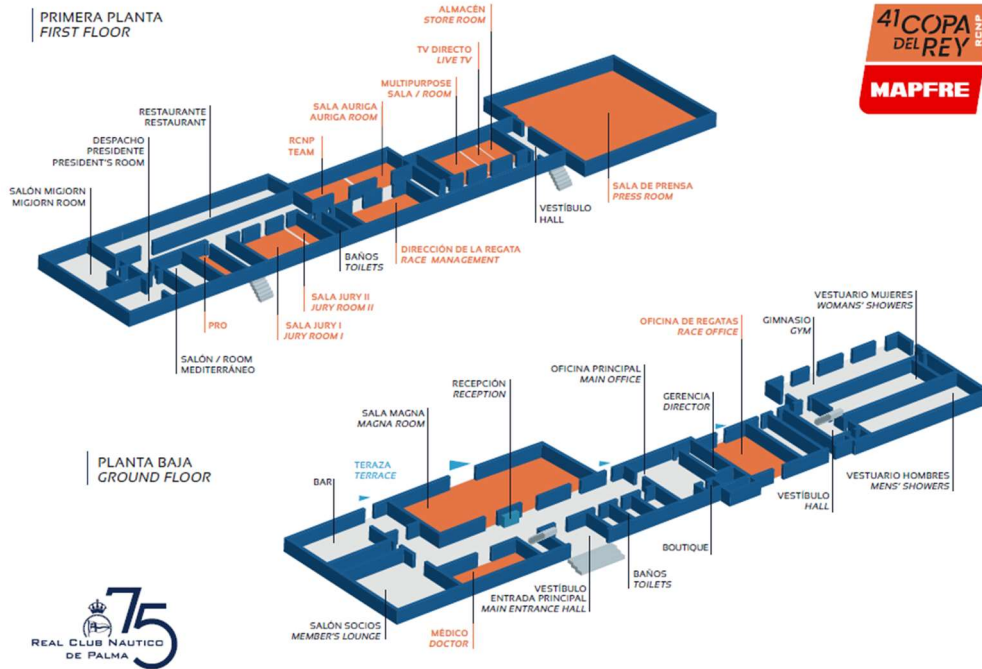
Real Club Náutico de Palma	+34.971 72 68 48	VHF 77/72/09
Race Committee		ALFA VHF 11 BRAVO VHF 68 CHARLIE VHF 71
Safety coordinator at sea	+34 605 825 462	VHF 72
Safety coordinator at shore	+34 629 923 996	VHF 09
Maritime Safety Coordination Centre	+34.971.72.45 62 900 202 202	VHF 10 / 16
Spanish Central Emergencies Response	112	



APPENDIX 4. SAFETY ZONE



APPENDIX 5. FACILITIES



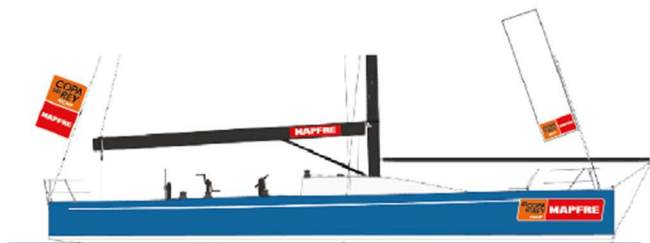
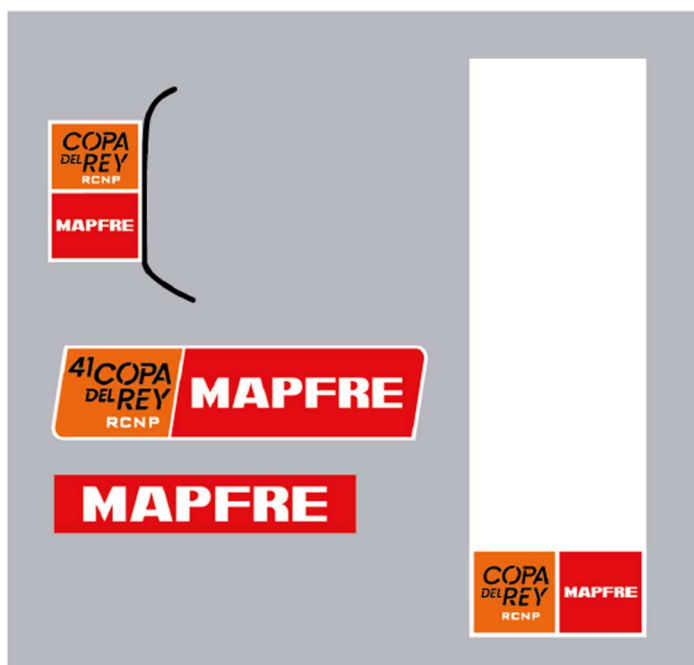
APPENDIX 6. ADVERTISING [NP]

BMW ORC MALLORCA SOTHEBY'S WCC HERBALIFE J70

All boats will be required to display:

- Event sticker on the front part of the boom.
- Event bow sticker on each side of the hull.
- Event backstay flag
- Class sponsor stay flag (only when moored in the harbor)

The race committee may impose, without a hearing, with a 5 points penalty in each race of the day's races to boats failing to comply with this rule. This changes RRS 63.1 & A5.



APPENDIX 6. ADVERTISING [NP]

ClubSwan 50
ClubSwan 42
ClubSwan 36

All boats will be required to display:

- Event sticker on the front part of the boom.
- Event bow stickers on each side of the hull.
- Event and Class backstay flags
- Swan and Sponsor stay flag (only when moored in the harbor)

The race committee may impose, without a hearing, with a 5 points penalty in each race of the day's races to boats failing to comply with this rule. This changes RRS 63.1 & A5.

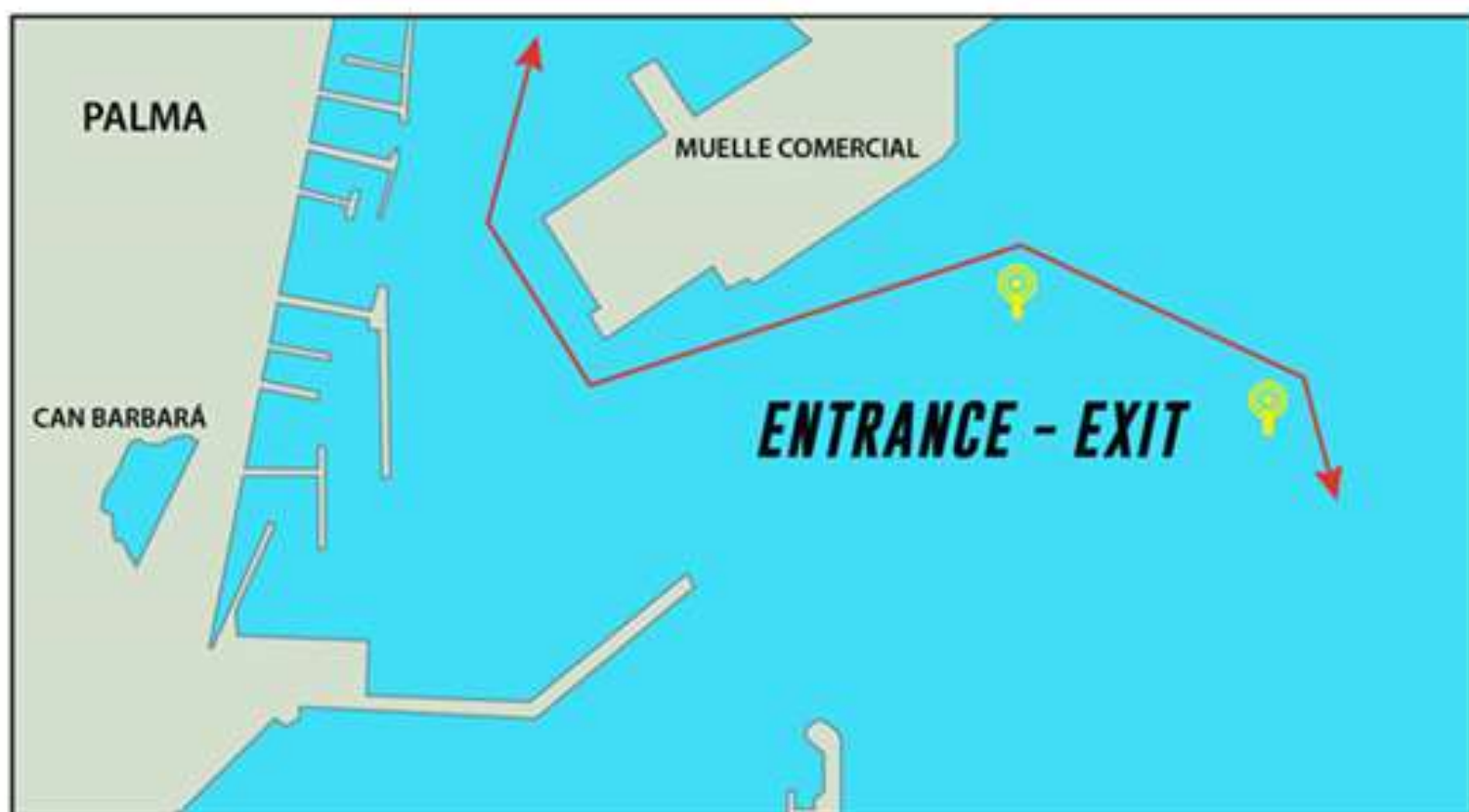


APPENDIX 7. ENTRANCE AND EXIT OF THE PORT OF PALMA

To enter and exit the port of Palma and with the intention to not interfere with the commercial traffic, the Palma Pilots, have requested the participants their maximum collaboration and attention.

For this purpose, an entrance and exit channel has been established for all the participants, (see diagram). We kindly request you not to interfere with the commercial ferry traffic whilst hoisting and/or lowering the sails, remaining clear ahead from the entrance/exit of the port.

We also inform you that the entrance and exit channel will be surveyed by organization and pilot Boats. Please follow their instructions.



41
EDITION

COPA
DEL REY

RCNP

MAPFRE

OFFICIAL SPONSOR OF THE 41 COPA DEL REY



MAPFRE

PATROCINADOR OFICIAL DE LA 41 COPA DEL REY



Mallorca
Sotheby's
INTERNATIONAL REALTY

quirónsalud
La salud persona a persona

WATCHES OF SWITZERLAND
RELOJERIA SUIZA

25 BALEARIA
AÑOS

MAJORICA
1890

iHOLA!

CASTILLO
HOTEL
SON VIDA
MALLORCA

MARRIOTT
BONVOY

Herbalife

Purobeach
RESTAURANT & BAR • POOL • WELLNESS • MUSIC • SHOP

COMPLETE
MARINE
FREIGHT



bolle

GRUPO
Cabanach

B&G

Finca
Pedrosa

ALTA EXPRESIÓN
LOS PEDROCHES

Martín Códax

Coca-Cola



SANTISIMA
TRINIDAD
Cuba



OK
mobility

Zespri



AGUA DE BALEARES
1957-1958

PredictWind.com
THE WORLD LEADER

AirEuropa
Linea Aérea Oficial

AICO
EVENT PRODUCTION

Espacio
HomeDesign

HELIOCARE



ASTILLEROS DE
MALLORCA

TIBERI
CATERING

Ajuntament de Palma



AEMet
Agencia Estatal de Meteorología



@CopadelReyMAPFRE
@CopaReyMAPFRE

@CopaReyMAPFRE
Copa del Rey MAPFRE

#CopaReyMAPFRE
#MasQueUnaRegata

#41Aniversario
regatacopadelrey.com

#compromiso RCNP

75
REAL CLUB NAUTICO
DE PALMA