



# HUNGARIAN 49er AND 49erFX OPEN NATIONAL CHAMPIONSHIP

**BALATONFÜRED, 7-10 OCTOBER 2022**

Organizing Authority: Balatonfüredi Yacht Club, in conjunction with the Hungarian Sailing Federation and the Hungarian 9er Class Association

## SAILING INSTRUCTIONS

### INTRODUCTION

The notation **[NP]** in a rule of the sailing instructions means that a boat may not protest another boat for breaking that rule. This changes RRS 60.1(a).

#### 1. RULES

1.1 The event is governed by the rules as defined in *The Racing Rules of Sailing* (RRS).

#### 2. CHANGES TO SAILING INSTRUCTIONS

2.1 Any change to the sailing instructions will be posted no later than two hours before the scheduled time of the first race affected, except that any change to the schedule of races will be posted by 20:00 on the day before it will take effect.

#### 3. COMMUNICATION

3.1 The online event platform is located [here](#). The online event platform will enable paperless submissions of hearing requests, questions for officials, penalty reports and scoring inquiries. In case of technical issues, paper forms will be available at the race office.

#### 4. [DP] CODE OF CONDUCT

4.1 Athletes and support persons shall comply with reasonable requests from race officials.

#### 5. SIGNALS MADE ASHORE

5.1 Signals ashore will be displayed at the official flagpole located next to the launching ramps.

5.2 When flag AP is displayed ashore, '1 minute' is replaced with 'not less than 30 minutes' in the race signal AP.

#### 6. RACING AREA

6.1 The racing area is shown in Addendum 1.

Page: 1 / 5



## 7. SCHEDULE OF RACES

7.1 Racing days, scheduled time of warning signals and number of races are as follows:

Racing day	Warning signal	Number of races
7 October 2022	10:30	3
8 October 2022	10:00	3
9 October 2022	10:00	3
10 October 2022	reserve day	
<b>Total number of races:</b>		<b>9</b>

7.2 The reserve day will be used for racing only if less than four races have been completed by 9 October 2022.

7.3 On the last scheduled day of racing no warning signal will be made after 15:00.

## 8. CLASS FLAG

8.1 Class flags are described in the table below.

Class	Flag
49er	Black 49er logo on a white background
49erFX	Black 49erFX logo on a light blue background

## 9. COURSES

9.1 The diagram in Addendum 2 shows the course, the course designations, the order in which marks are to be passed, and the side on which each mark is to be left.

9.2 No later than the warning signal, the race committee signal vessel will display the approximate compass bearing of the first leg. Failure to display the compass bearing will not be grounds for redress. This changes RRS 62.1(a).

## 10. MARKS

10.1 Marks 1, 2s and 2p will be yellow cylinders.

10.2 New marks, as provided in SI 12.1, will be orange cylinders.

10.3 The starting marks will be race committee vessels.

10.4 The finishing marks will be a race committee vessel and a thin yellow cylinder.

10.5 Marks 1, and 2p before finishing are rounding marks.

10.6 Except before finishing, marks 2s and 2p are gate marks. When a gate mark is missing, the mark in position is a rounding mark and shall be left to port.

## 11. THE START

11.1 The starting line is between staffs displaying orange flags on the starting marks.

11.2 To alert boats that a race or sequence of races will begin soon, the orange starting line flag will be displayed with one sound at least two minutes before a warning signal is made.

11.3 A boat that does not start within four minutes after her starting signal will be scored Did Not Start without a hearing. This changes RRS A5.1 and A5.2.

11.4 The warning signal for each succeeding race will be made as soon as practicable.



## 12. CHANGE OF THE NEXT LEG OF THE COURSE

12.1 To change the next leg of the course, the race committee will either move the original mark, or lay a new mark and remove the original mark as soon as practicable. When in a subsequent change a new mark is replaced, it will be replaced by an original mark.

## 13. THE FINISH

13.1 The finishing line is between a staff displaying a blue flag on the race committee vessel and the course side of the other finishing mark.

## 14. TIME LIMITS AND TARGET TIMES

14.1 Time limits and target times (in minutes) are as follows.

Time Limit	Mark 1 Time Limit	Finish Window	Target Time
45	20	15	30

If no boat has passed the first mark within the Mark 1 Time Limit, the race committee shall abandon the race. Failure to meet the Target Time will not be grounds for redress. This changes RRS 62.1(a).

14.2 The Finishing Window is the time for boats to finish after the first boat sails the course and finishes. Boats failing to finish within the Finishing Window shall be scored Did Not Finish without a hearing. This changes RRS 35, A5.1 and A5.2.

## 15. HEARING REQUESTS

15.1 The protest time limit is 60 minutes after

- (a) the last boat has finished the last race of the day, or
- (b) the display of "AP over A" or "N over A".

However, when "AP over A" is displayed ashore, the protest time limit will be 30 minutes after displaying the signal. Where more of the above cases apply, the protest time limit will be whichever the latest is.

15.2 Hearing request forms are available at the online event platform. Hearing requests shall be delivered there within the appropriate time limit.

15.3 Notices will be posted within 30 minutes of the protest time limit to inform competitors of hearings in which they are parties or named as witnesses. Hearings will be held in the hearing room near the race office.

15.4 A list of boats that have been penalized under RRS Appendix P for breaking RRS 42 will be posted.

## 16. SCORING

16.1 To request a correction of an alleged error in posted results, a boat may complete a scoring enquiry form available at the online event platform.

## 17. [DP] [NP] SAFETY REGULATIONS

17.1 Boats not leaving the harbor for a scheduled race shall promptly notify the race office.

17.2 On arrival at the racing area, boats shall sail closely by the race committee signal vessel, clearly showing their sail numbers.

17.3 A boat that retires from racing

- (a) shall notify the race committee before leaving the racing area if possible, or
- (b) shall notify the race office as soon as possible.



## 18. [DP] REPLACEMENT OF CREW OR EQUIPMENT

- 18.1 Substitution of athletes is not allowed without prior written approval of the race committee. Except for the deadline for the entry, the substitute shall comply with requirements in NoR 4 and 5.
- 18.2 Substitution of damaged or lost equipment is not allowed unless authorized by the race committee. Requests for substitution shall be made to the committee at the first reasonable opportunity.

## 19. OFFICIAL VESSELS

- 19.1 Official vessels will be identified as follows.

Type of boat	Identification
Race Committee	Black RC sign on a white background
Protest Committee	Red JURY sign on a white background
Media	White MEDIA sign on a green background

## 20. SUPPORT PERSON VESSEL RESTRICTED AREAS

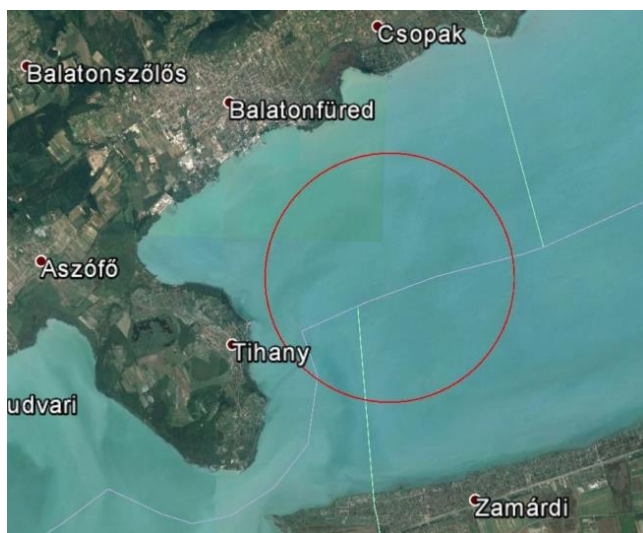
- 20.1 Support person vessels shall stay outside areas where boats are racing and shall not be
- closer than 100 metres to any boat racing,
  - within 100 metres to leeward of the starting line or within 100 metres of its marks from the time of the preparatory signal until all boats have left the starting area or the race committee signals a postponement, general recall or abandonment,
  - between any boat racing and the next mark of the course,
  - within 100 metres of any mark of the course while boats are in the vicinity of that mark, and
  - within 100 metres of the finishing line while boats are finishing.
- 20.2 Support person vessels shall proceed around the racing area in such a way to avoid any wash that will impact boats racing. Boats that are motoring above five knots shall remain at least 150 metres from any boat racing.
- 20.3 The restrictions in SI 20.1 and 20.2 shall not apply for a support person vessel giving help to a boat or athlete in danger.
- 20.4 The race committee will use VHF 27 radio channel for the purpose of communication under RRS 37. These instructions override any conflicting rules concerning support persons and support person vessels.

## 21. TRASH DISPOSAL

- 21.1 Trash may be placed aboard official and support person vessels.



## ADDENDUM 1 – RACING AREA



Approximate area center	N 46° 55.593' E 17° 55.945'
Radius	2.7 km
VHF channel	27

## ADDENDUM 2 – COURSE DIAGRAM

