

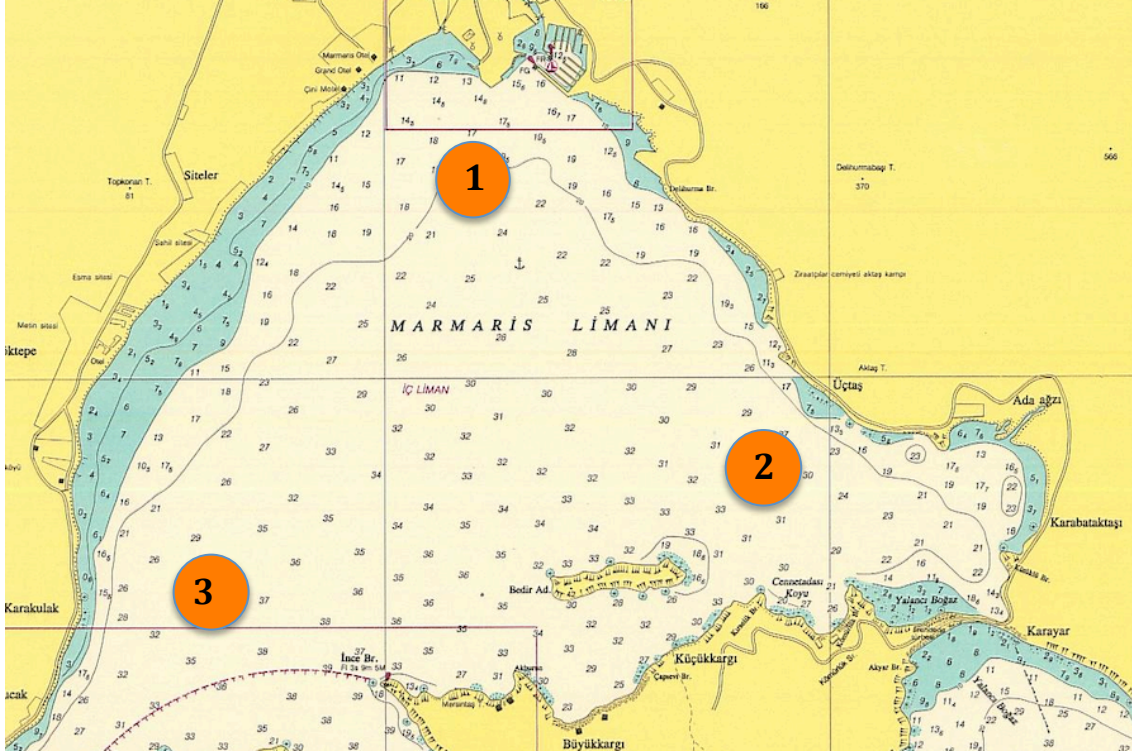
## RACE #4

Course 4 :M.I.Y.C. Classical



Distance : ~7.5 nm.

Time Limit : 120 minutes



### Marks at Starboard

ALPHA S(1) - 2 - 3 - 1 - 2 - F(1)

BRAVO S(2) - 3 - 1 - 2 - 3 - F(2)

CHARLIE S(3) - 1 - 2 - 3 - 1 - F(3)

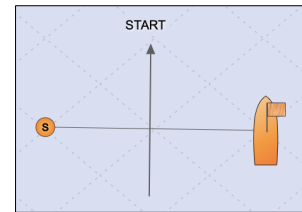
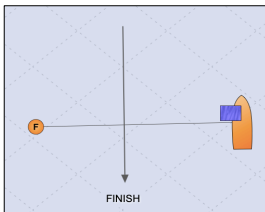
### Marks at Port

DELTA S(1) - 3 - 2 - 1 - 3 - F(1)

ECHO S(2) - 1 - 3 - 2 - 1 - F(2)

FOXTROT S(3) - 2 - 1 - 3 - 2 - F(3)

### START / FINISH (PiN END)



\*RC Vessel(s), Marks and buoys locations for the races and the courses will be approximately and shall not be grounds for a request for redress.

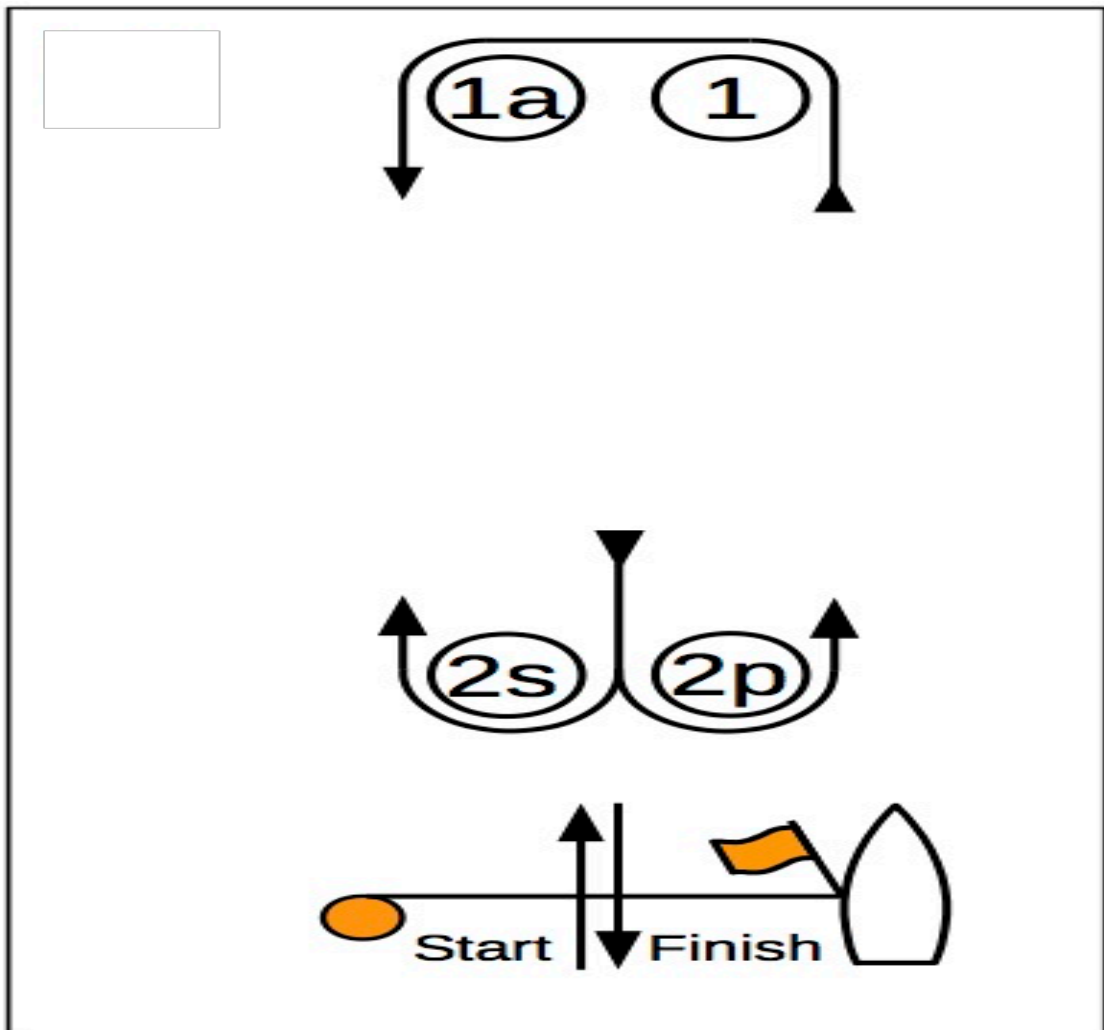
**RACE #4**

Course 5 :



**Distance** : ~6.0 nm.

**Time Limit** : 120 minutes



**Mark Rounding Order**

**Start - 1 - 1a - 2s/2p - 1 - 1a - FINISH**

\*RC Vessel(s), Marks and buoys locations for the races and the courses will be approximately and shall not be grounds for a request for redress.