



Formula Kite Europeans Event Information

Contents

Launching.....	1
Berthing.....	2
Getting to the race course.....	4
Submerged Barrier	7
Refuelling	8
Recovery.....	9



Please ensure you have completed the Event Support Vessel Registration form [here](#) prior to arrival.

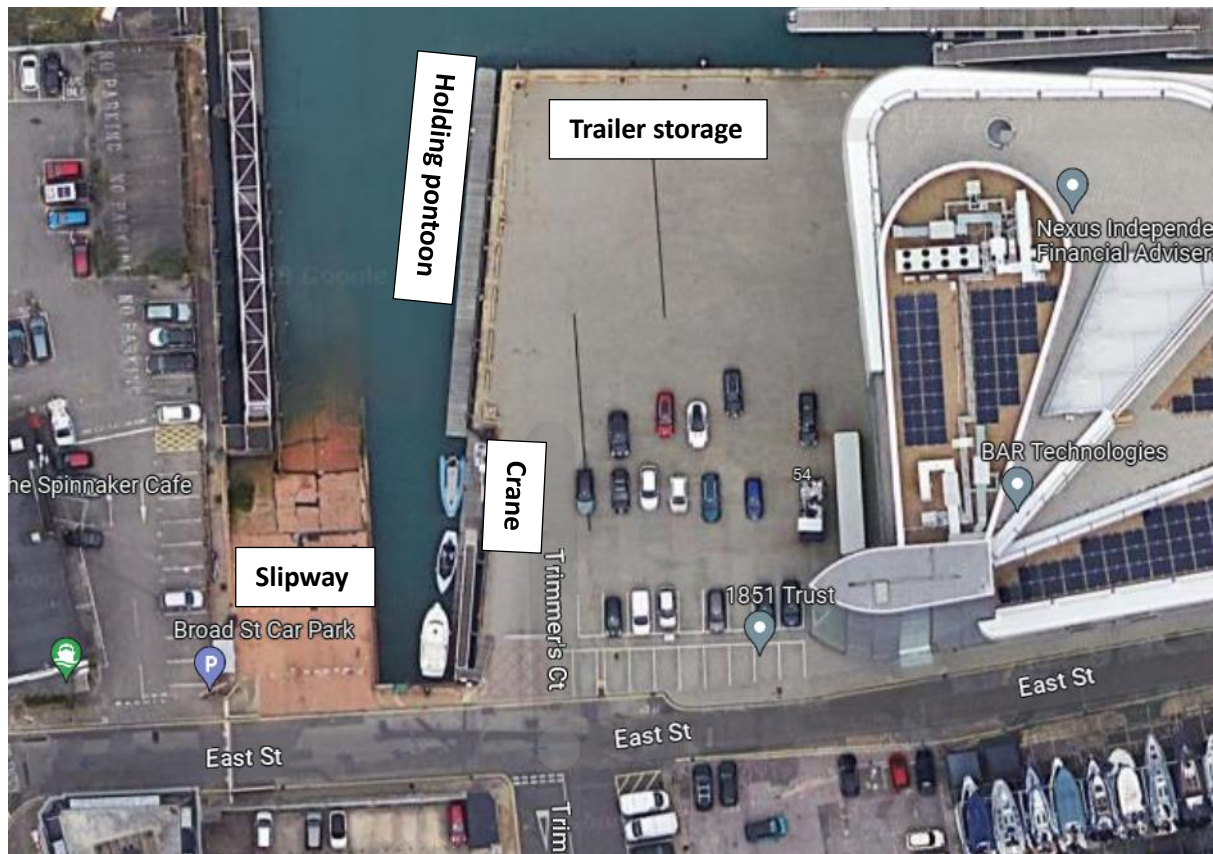
Launching

Coach boats will launch from The Camber Slipway, East St, Old Portsmouth, Portsmouth, PO12JJ.

This is a small one way street so you will be given a time slot to launch your boat on your arrival date.

For those that require a crane there will be an operator on site for your time slot.

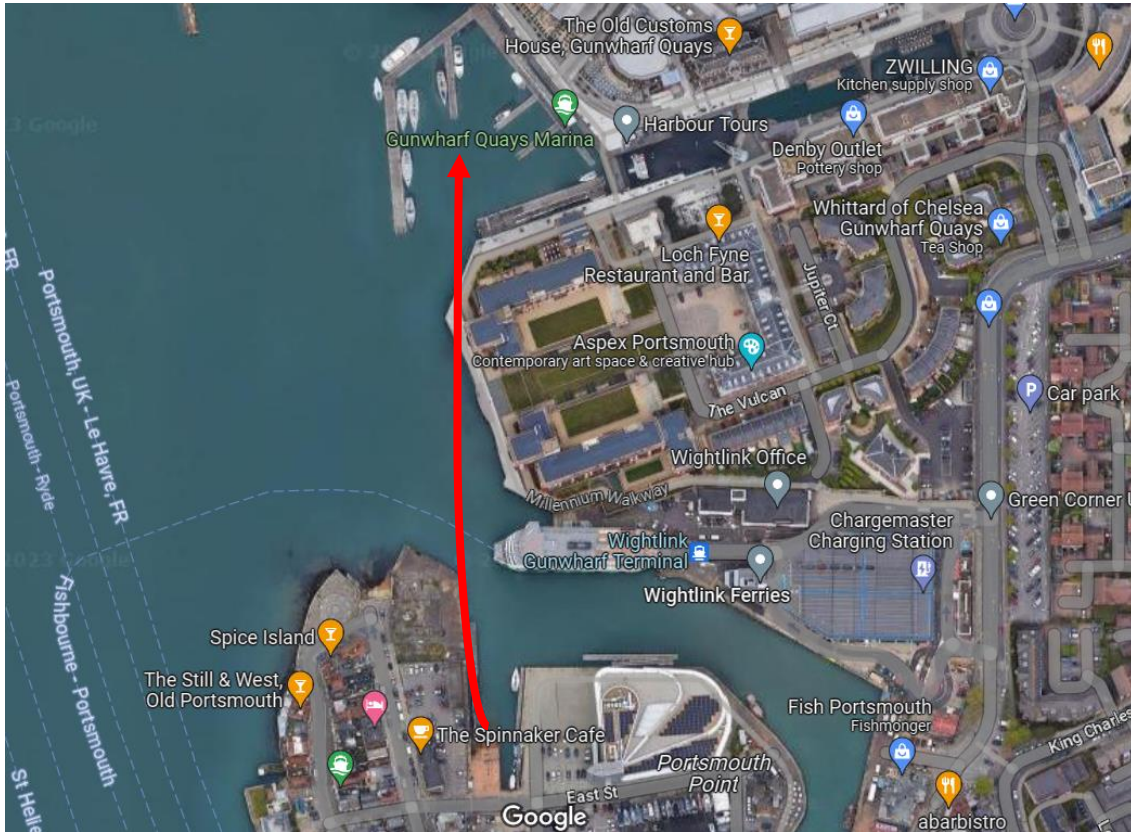
Once launched please tie off on the holding pontoon and move your vehicle and trailer off the slipway. Trailers can be moved to the trailer storage area but vehicles cannot be stored here.



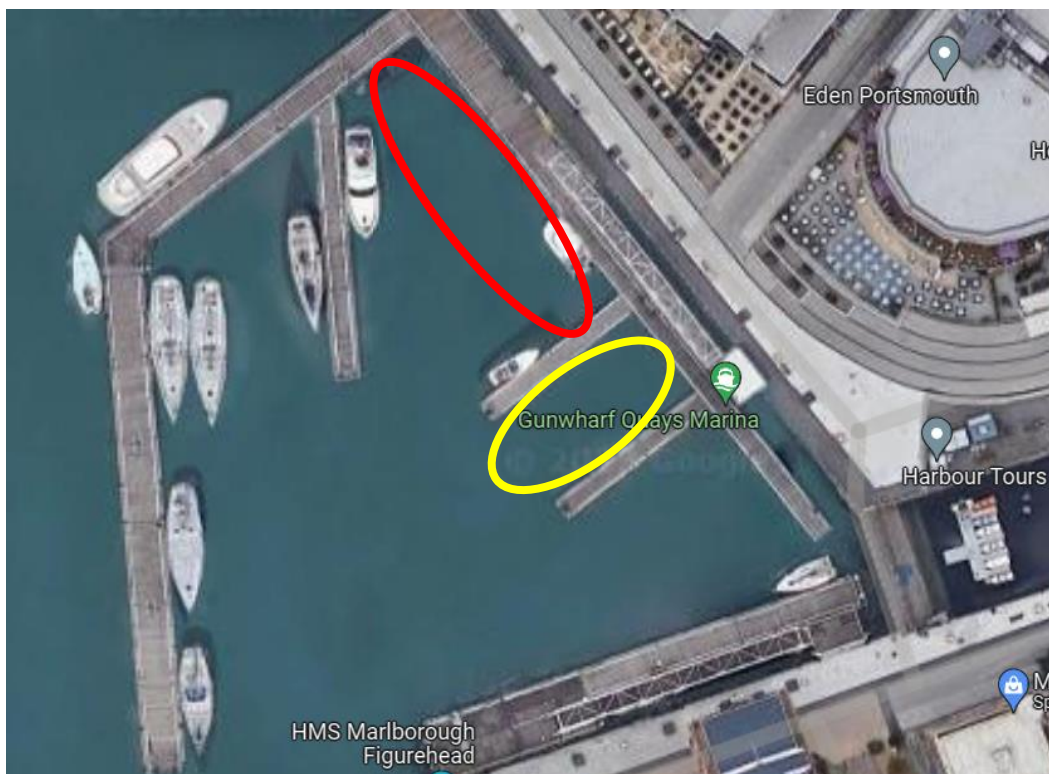


Berthing

RIBs will be berthed at Gunwharf Quays Marina. Please ensure you radio KHM on channel 11 prior to crossing.

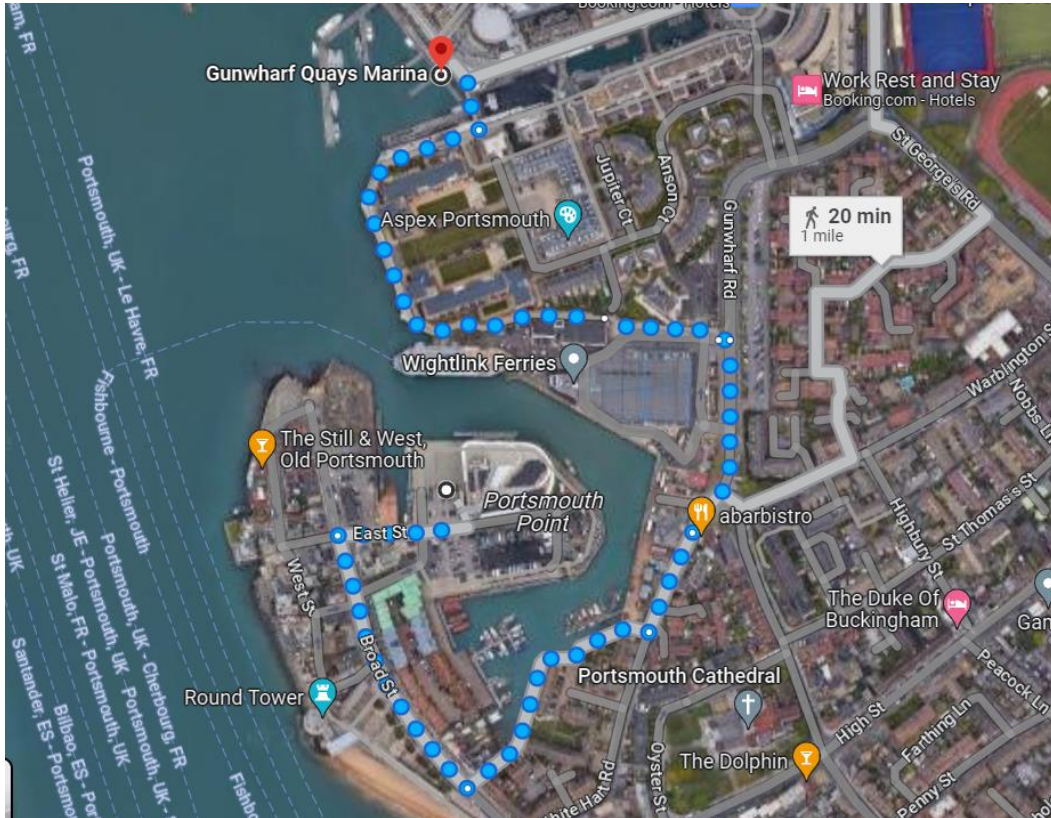


Spaces are limited for Saturday 16th September so please raft your RIBs in the designated area in red below. **After** the night of the 16th RIBs will be spread out a little more (as shown in yellow below)





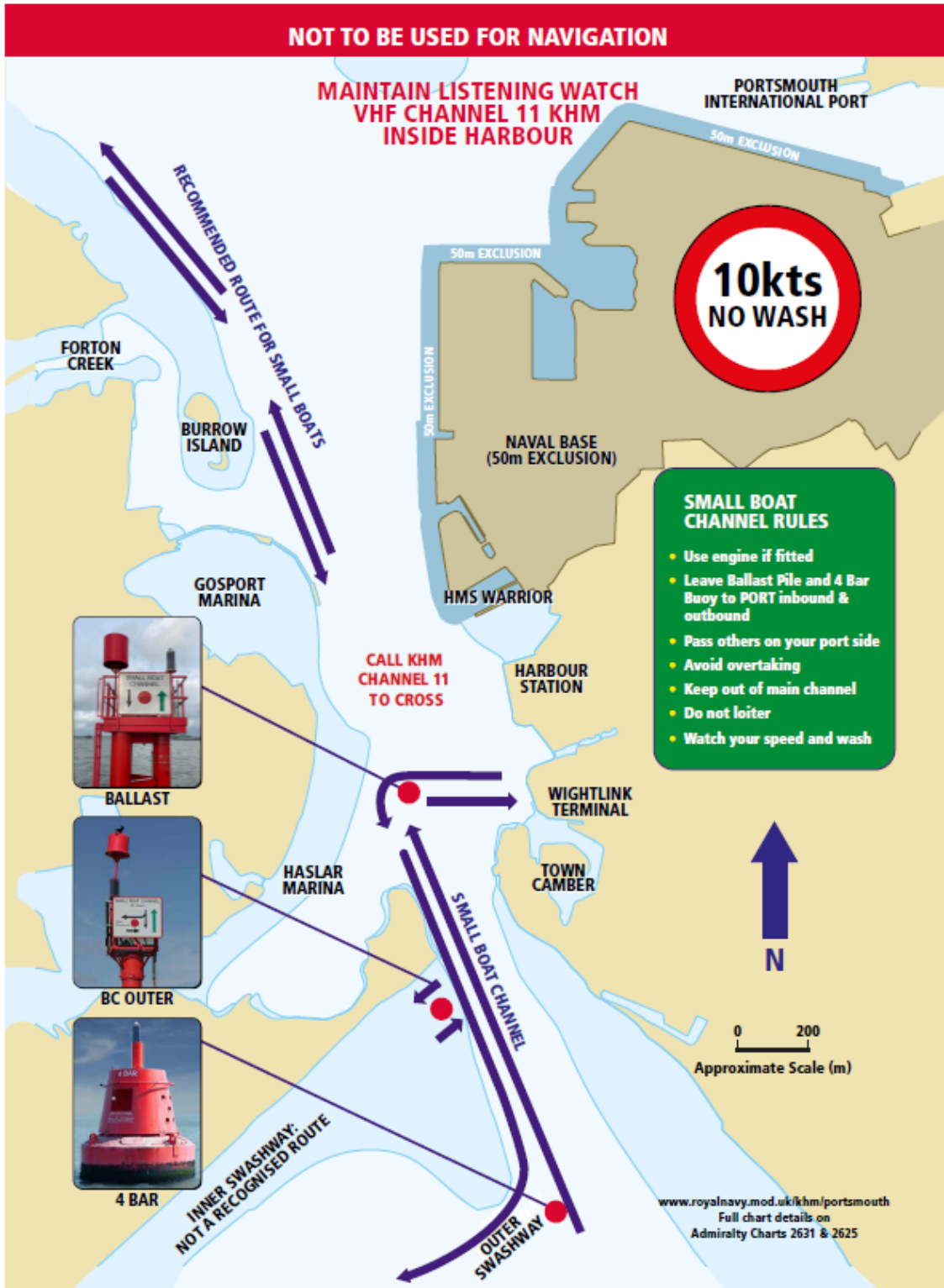
Its an approximate 15 minute walk back to your vehicle. If you are looking to head back to your RIB after berthing it please note that the Gunwharf Quays car park does have a height restriction barrier but there is public parking around.





Getting to the race course

When leaving Gunwharf Marina you will need to transit across the channel and radio KHM on channel 11 prior to each transit. Please try and make your journey in groups of 3 or more. Please see the diagram below that shows where the required transit. This will also be required on your return journey. Please also note the speed limits whilst operating within the harbour.





Portsmouth Harbour Entrance - Approach Channel, Small Boat Channel, Swashway and Inner Swashway

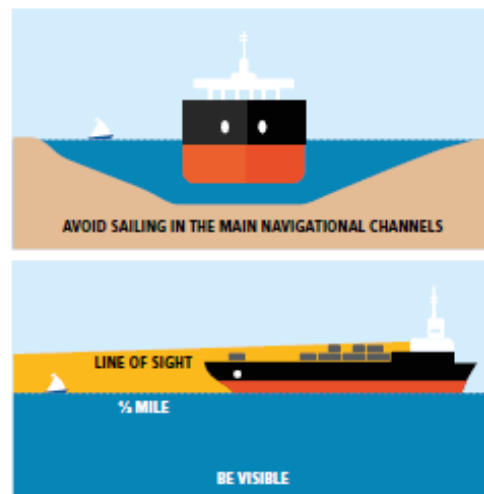
- Mariners are advised that the King's Harbour Master has made the following General Direction under the Dockyard Port of Portsmouth Order 2005; that the Portsmouth Harbour entrance and main approach channel is considered a narrow channel in accordance with the International Regulations for Preventing Collisions at Sea (COLREGS) and as such, all mariners are reminded that in accordance with Rule 9(b) "a vessel of less than 20 metres in length or a sailing vessel shall not impede the passage of a vessel that can safely navigate only within a narrow channel or fairway".
- A Small Boat Channel for vessels less than 20m in length including Personal Watercraft (PWC) has been created on the western side of the harbour entrance. The 50 m wide Channel is shown on Admiralty charts. Its northern and southern extremities are at Ballast Pile and Red No 4 Bar Buoy.
 - All vessels under 20m must enter and leave the harbour through the Small Boat Channel
 - Use engine if fitted
 - Avoid overtaking
 - Keep out of main channel
 - Do not loiter
 - **Leave Ballast Pile and 4 Bar Buoy to port inbound and outbound.**
 - BC Outer Beacon shall be left to port when using the Inner Swashway, inbound and outbound.
 - Call KHM on VHF Channel 11 to cross north of Ballast pile to Town Camber/Gunwharf Quays or vice versa.
- Remember the 10 knot speed limit and to create minimum wash.

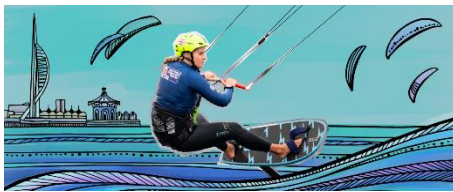
Extract from King's Harbour Master Portsmouth DIRECTION NO 2/23

Full details: <https://www.royalnavy.mod.uk/khm/portsmouth/local-notice/general-directions/2023/2302-portsmouth-hbr-ent-app-channel-sb-channel-swashway-and-inner-swashway>

Key Safety Points

- **Avoid sailing in the main navigational channels**, especially in poor visibility so you don't impede the passage of large ships.
- **DO NOT underestimate the speed of ships.** Large container ships may transit the Solent at 18 knots and above.
- **VHF is a key control and safety measure in the Solent.** Across the broader eastern Solent, VTS Southampton use CH12 to control traffic. When approaching Portsmouth and certainly north of a line between Outer Spit Buoy (OSB) and Gilkicker Point listen to Channel 11 for KHM.
- **Be visible.** From the bridge of an aircraft carrier or large tanker, the captain or pilot will lose sight of you ahead when you close within approximately a third of a mile, although YOU can see the ship at all times. At night make sure your navigation lights can be seen.
- **Be alert.** Look around, especially astern. Keep a good all round watch and check behind sails. Even on a clear night you will have difficulty seeing a big ship approach
- **Within half a mile of the shore and inside the Harbour, the speed limit is 10 knots** through the water but create minimum wash at all times.





FORMULA KITE EUROPEAN CHAMPIONSHIPS 2023



OLYMPIC QUALIFIER
PORTSMOUTH, UK
19-24TH SEPTEMBER 2023

Know your local harbour **speed limits**



COLREGS Rule 6 – **Safe Speed**

Every vessel shall at all times proceed at a safe speed so that she can take proper and effective action to avoid collision and be stopped within the distance appropriate to the prevailing circumstances and conditions.

The following factors should be among those taken into account:

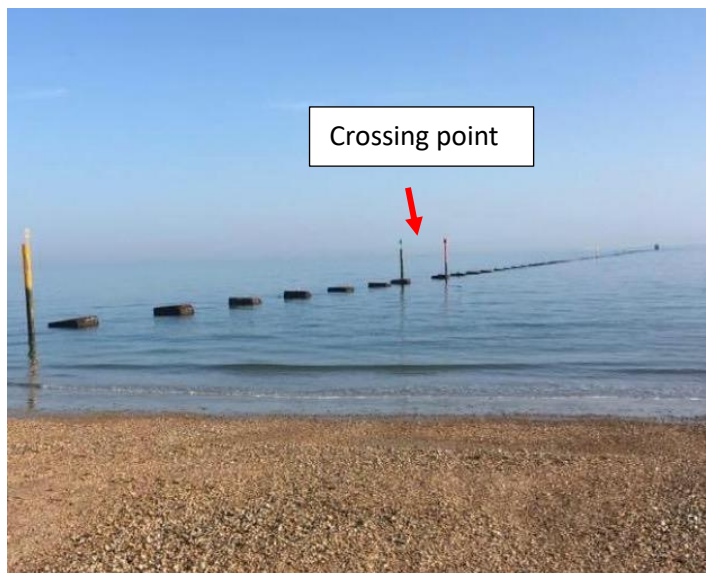
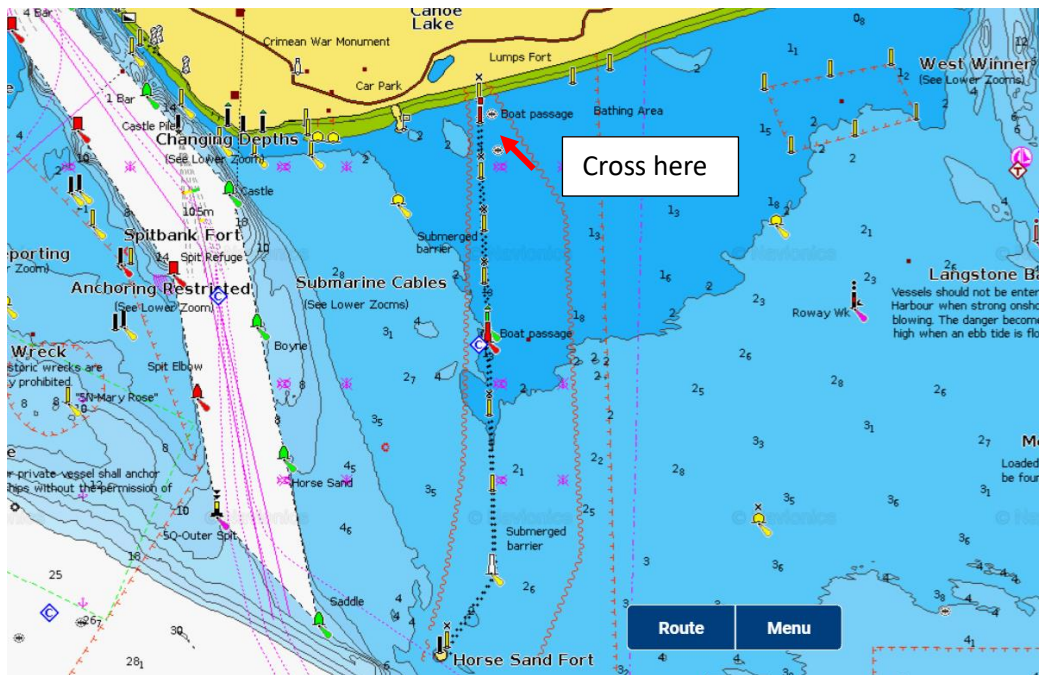
1. The state of visibility
2. The traffic density including concentrations of fishing vessels or any other vessels
3. The manoeuvrability of the vessel with special reference to stopping distance and turning ability in the prevailing conditions
4. The state of wind, sea and current, and the proximity of navigational hazards
5. At night the presence of background light such as from shore lights or other back scatter
6. In instances where radar is being used, the limitations associated with your radar device and general radar navigation must be considered

For more information, search **Hampshire Marine Unit** online.
The police, MCA and harbour masters can prosecute, don't end up in court!



Submerged Barrier

Please be aware of the submerged barrier. You will need to cross between the green and red posts shown below



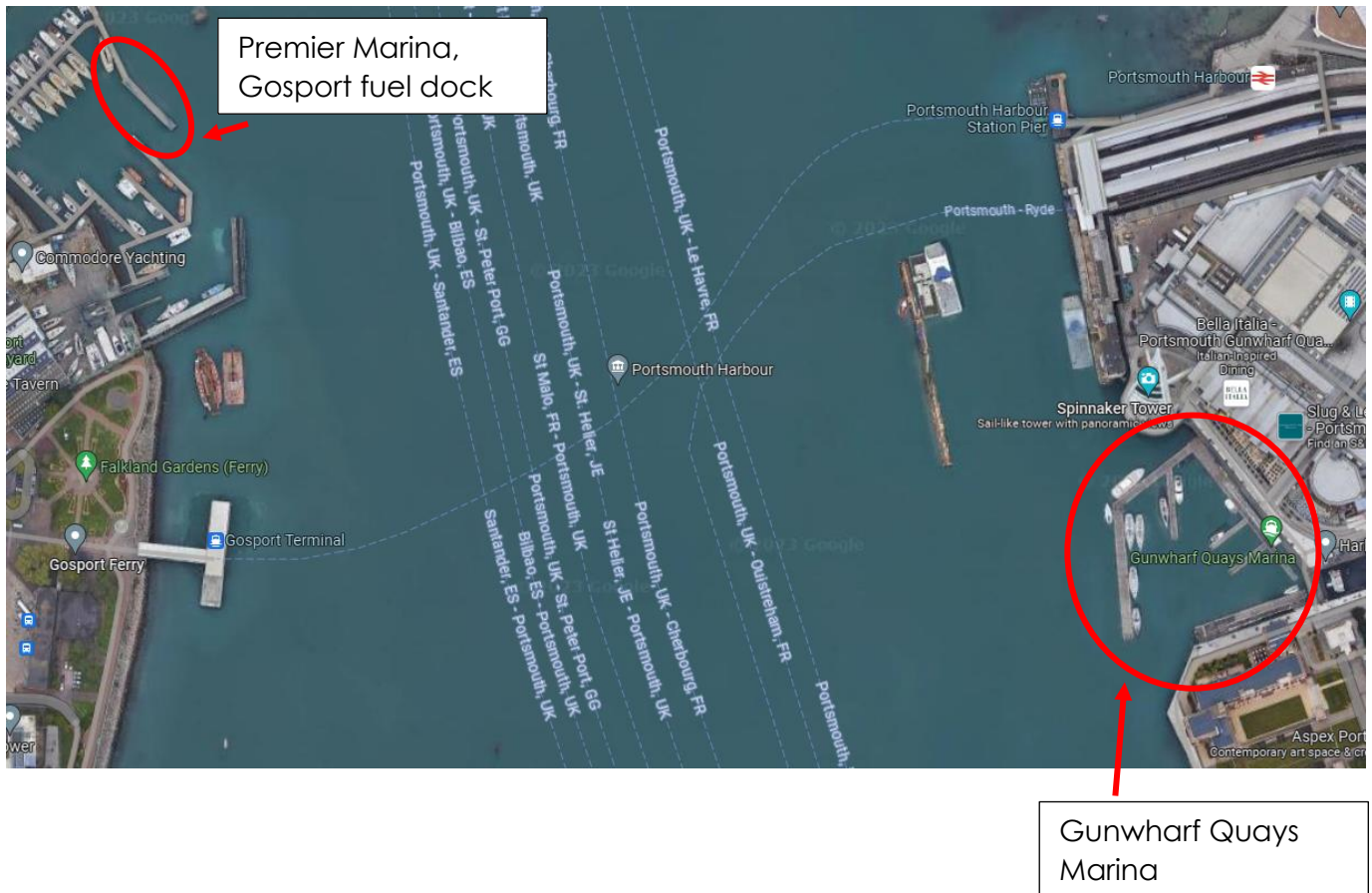
**DO NOT CROSS OUTSIDE OF THESE POSTS
OR THIS COULD BE YOU!!**





Refuelling

The easiest place to refuel will be using the Premier Marina, Gosport fuel dock. Please see locations below:





Recovery

All boats must be recovered from The Camber Slipway after racing on Sunday 24th September. You will be given an allocated time slot to recover your RIB, please ensure you are ready with your vehicle and trailer within your time slot.

If you have any questions about launching or recovering your RIB please call Mollie Knowlden on 07384 115805.