

FALL DINGHY REGATTA

October 23-24, 2021

Organizing Authority (OA): St. Francis Yacht Club

SAILING INSTRUCTIONS

The notation [NP] in a rule in the NoR means it shall not be grounds for protest by a boat. This changes RRS 60.1(a).

1. COMMUNICATIONS WITH COMPETITORS

Official notices will be posted on the official regatta notice board located at www.stfyc.com/racing and may be posted on the unofficial notice board located in the hallway adjacent to the Regatta entrance of StFYC.

2. CHANGES TO SAILING INSTRUCTIONS

- 2.1. Any change to the sailing instructions will be posted by 1000 on the day it will take effect, except that any change to the schedule of races will be posted by 1900 on the day before it takes effect.
- 2.2. Oral changes may be made on the water. If code flag Lima is displayed, competitors shall come within hail of the signal boat.

3. SIGNALS MADE ASHORE

- 3.1. Signals made ashore will be displayed from the flagpole located on the StFYC Race Deck.
- 3.2. When flag AP is displayed ashore, '1 minute' is replaced with 'not less than (60) sixty minutes'. This changes rule Race Signal AP.

4. SCHEDULE

- | <u>DATE</u> | <u>TIME</u> | <u>LOCATION</u> | <u>EVENT</u> |
|----------------------|---------------------|--------------------|--|
| Saturday, October 23 | 0930 | Starting Line Room | Competitors' meeting for Race Venue 2, 3 & 4 |
| | 1130 | | First Warning for Race Venue 2, 3 & 4 |
| | <i>After racing</i> | | Social at St. Francis Yacht Club |
| Sunday, October 24 | 0900 | Starting Line Room | Competitor's meeting for Race Venue 1 |
| | 1030 | | First Warning for Race Venue 1 |
| | 1100 | | First Warning for Race Venue 2, 3 & 4 |
| | 1600 | | No warning signal made after this time |
| | <i>After racing</i> | Starting Line Room | Social & Awards at St. Francis Yacht Club |
- 4.2. Six races are scheduled for all classes.

5. RACING AREA

- 5.1. See Attachment A – Starting Areas
- 5.2. Race Venue 1 shall include RS Feva & RS Tera classes
- 5.3. 5o5, I14, I420, C420, ILCA 7 & ILCA 6 intended venue assignments will be posted on the Official Notice Board by 0900 hrs on each race day.

6. COURSES & MARKS

- 6.1. The courses and marks are described in Attachments B, C, D, and E – Official Description of Marks and Courses.
- 6.2. No later than the warning signal, the Signal boat will display:
 - a placard designating the course
 - a flag designating the mark rounding direction. If a red flag is displayed, all marks, except for a gate, shall be rounded to port. If a green flag is displayed, all marks except for a gate, shall be rounded to starboard.
- 6.3. For Race Venue 2 & 3: Mark 3 will be a gate. In the event that the gate is not in place, the single mark 3 shall be rounded in the same direction as the previous mark.
- 6.4. Marks 1o and 2o are offset marks to a windward mark. In the event that the offset is not in place, the single windward mark shall be rounded as designated by the red or green flag flown on the signal boat at the start per SI 6.2.

7. THE START

- 7.1. For Race Venue 1: Races will be started using Appendix U (Audible-Signal Racing System). This changes RRS 26.
- 7.2. For Race Venues 2, 3 & 4: Races will be started using RRS 26.

- 7.3. The starting line will be between a staff displaying an orange flag on the signal boat and an orange inflatable ball or a staff displaying an orange flag on a Race Committee boat.
- 7.4. A boat that starts later than four (4) minutes after her starting signal shall be scored Did Not Start (DNS). This changes RRS 63.1 and A5.
- 7.5. The intended starting order for the first race of each day shall be as follows. Subsequent races may be started in any order.
 - a. Race Venue 1: RS Feva, RS Tera
 - b. Race Venue 2: 5o5, I14, I420, C420, ILCA 7, ILCA 6
 - c. Race Venue 3: I420, C420, ILCA 7, ILCA 6
 - d. Race Venue 4: 5o5, I14

8. CLASS FLAGS

Class Flag	Description
ILCA 7	Red class insignia on a white field
ILCA 6	Red class insignia on a green field
RS Feva, RS Tera, I420, C420, 5o5, I14	Class insignia on a white field

9. RECALLS

As a courtesy, the race committee will attempt to hail On Course Side (OCS) boats. Failure to execute this hail or failure to receive it shall not relieve a boat of her sole obligation to start properly, nor shall it constitute an improper action or omission of the race committee under RRS 62.1(a).

10. CHANGE OF THE NEXT LEG OF THE COURSE

- 10.1. To change the next leg of the course, the race committee will move the original mark (or the finishing line) to a new position.
- 10.2. The race committee may change a leg of the course by up to five (5) degrees in bearing and/or 0.2nm in length without a signal. This changes RRS 33.

11. THE FINISH

- 11.1. For Race Venue 1, 2 & 3: The finishing line will be between a staff displaying a blue flag on the finish boat and a white inflatable ball.
- 11.2. For Race Venue 4: The finishing line will be between a staff displaying a blue flag on the signal boat and an orange ball.

12. TIME LIMITS

12.1. Time limits are as follows:

Class	Time Limit (Minutes)
RS Feva & RS Tera	30
I420, C420, ILCA 7, ILCA 6	75
5o5 & I14	75

- 12.2. Boats failing to finish within fifteen (15) minutes after the first boat in her class sails the course and finishes will be scored Did Not Finish (DNF) without a hearing. This changes rules 35, A4 and A5.
- 12.3. If no boat has *finished* within the time limit, the race shall be abandoned.

13. COMMERCIAL TRAFFIC, SAFETY

- 13.1. Racing occurs near active shipping channels. The race committee would like to call special attention to the preamble to RRS Part 2.
- 13.2. A race committee boat may signal a boat that is racing to alter course to avoid impeding the passage of commercial vessels by making a sound signal (horn or whistle) and pointing flag W at the boat. The signaled boat shall promptly comply with the signal unless compliance would create an unsafe condition. If a boat fails to comply with such a signal, the race committee shall protest the boat. In this case the protest committee shall assume that the course alteration would not have created an unsafe condition, and the protested boat shall have the burden of proving otherwise.
- 13.3. If a commercial vessel sounds five blasts at a boat which is racing, and/or the vessel or the USCG is subsequently able to identify the offending boat, the boat may be subject to protest. In the event the race committee files the protest, the

protest committee shall assume that the identified boat has impeded passage or violated the U.S. Inland Navigation Rules, and the identified boat shall have the burden of proving otherwise.

- 13.4. A boat may not take a penalty when she may have broken any part of sailing instruction 13. When a protest committee decides that a boat has broken sailing instruction 13, the penalty shall be a disqualification that is not excludable (DNE).
- 13.5. The StFYC shall cooperate with and provide relevant information to the Coast Guard or other governmental authority regarding investigations of boats impeding ship traffic or violating U.S. Inland Navigation Rules (33 CFR 83).

14. PROTESTS

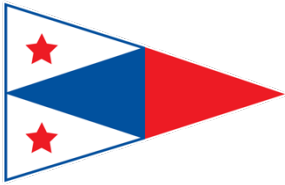
- 14.1. Protest forms are available at the jury desk located in the hallway adjacent to the Regatta entrance of StFYC. Protest and requests for redress or reopening shall be transmitted to the StFYC Race Office via email within the appropriate time limit. Email documents shall be addressed to racing@stfyc.com.
- 14.2. The protest time limit is sixty (60) minutes after the signal boat docks; except in the case of a complaint by Vessel Traffic or the USCG. This time will be posted. This constitutes the time limit mentioned in the first sentence of RRS 61.3.
- 14.3. In the event of a complaint by Vessel Traffic or the USCG, the protest time limit will be extended up to two (2) days after the conclusion of the regatta. This changes RRS 60.2(a) and RRS 61.3.
- 14.4. The protest committee will hear protests and requests for redress as soon as possible and in the order it determines. The hearing schedule will be posted no later than thirty (30) minutes after the close of protest time. This constitutes the notification required by RRS 63.2.
- 14.5. Notices of any other protests by the race committee, technical committee or protest committee will also be posted. This constitutes the notification required by RRS 61.1(b).
- 14.6. It is the sole responsibility of each boat involved to be ready and have witnesses available when the hearing is called.
- 14.7. If the race committee posts a list of boats scored OCS, ZFP, UFD, or BFD on the official notice boat before the protest time limit, a request for redress based on such a posted score shall be made no later than sixty (60) minutes after the protest time limit. This changes the first sentence of RRS 62.2.
- 14.8. On the last scheduled day of racing, a request for redress on a protest committee decision, or a request to reopen a hearing, shall be delivered no later than sixty (60) minutes after the decision was announced, either written or orally. This changes RRS 62.2 and RRS 66.

15. SCORING

- 15.1. One race will constitute a series.
- 15.2. When four (4) or fewer races are completed, a boat's series score will be the total of her race scores.
- 15.3. When five (5) or more races are completed, a boat's series score will be the total of her race scores excluding her worst score. This changes RRS A2.

16. AWARDS

Awards will be given in accordance with the NOR.

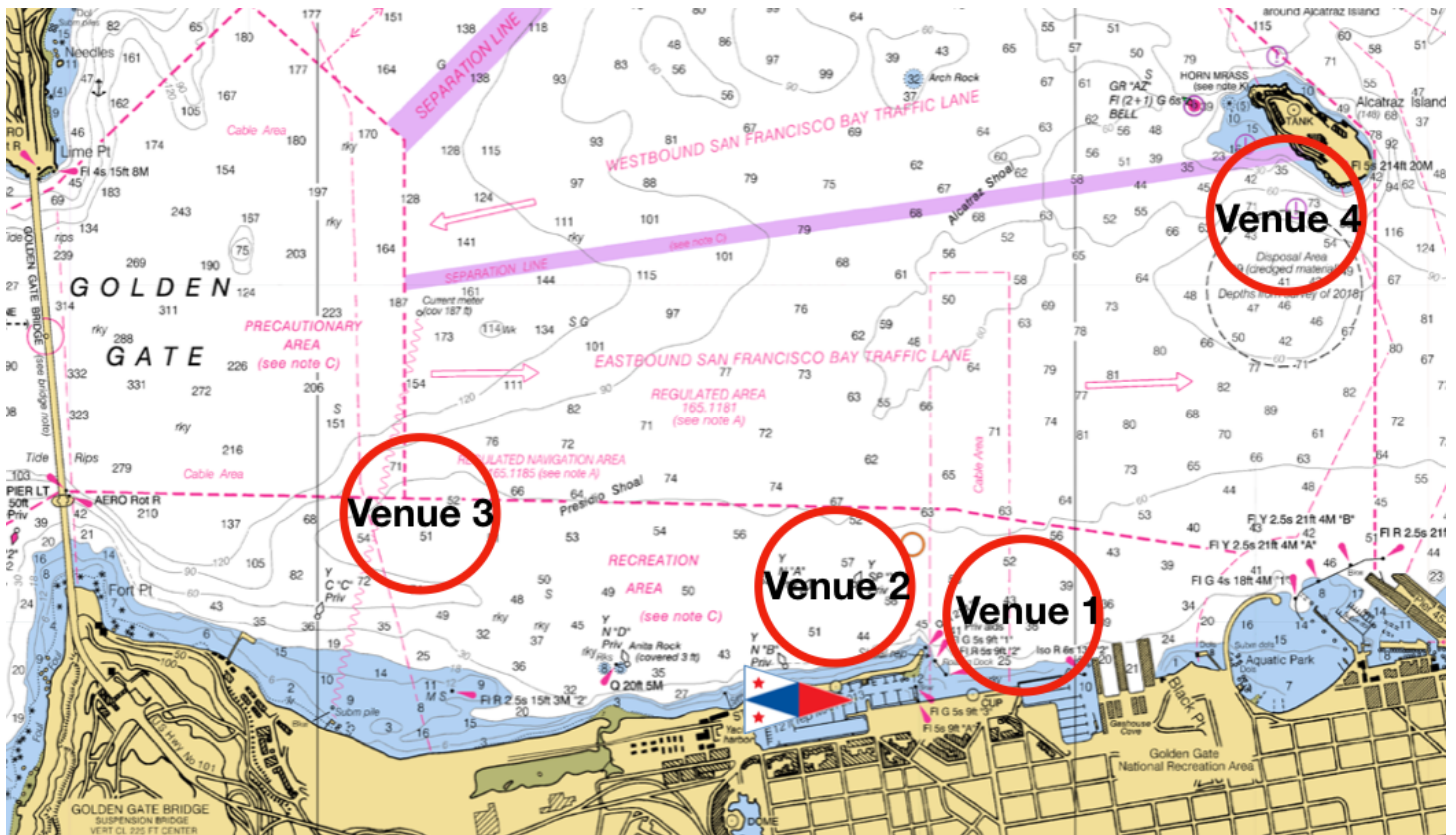


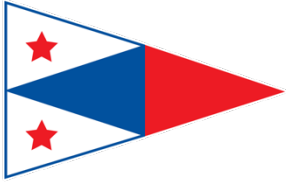
FALL DINGHY REGATTA ATTACHMENT A STARTING AREAS

The intended starting areas are as follows:

- Race Venue 1: Fort Mason – RS Tera & RS Feva
- Race Venue 2: City Front
- Race Venue 3: Presidio
- Race Venue 4: Alcatraz

5o5, I14, I420, C420, ILCA 7 & ILCA 6 venue assignments will be posted on the Official Notice Board by 0900 hrs on each race day

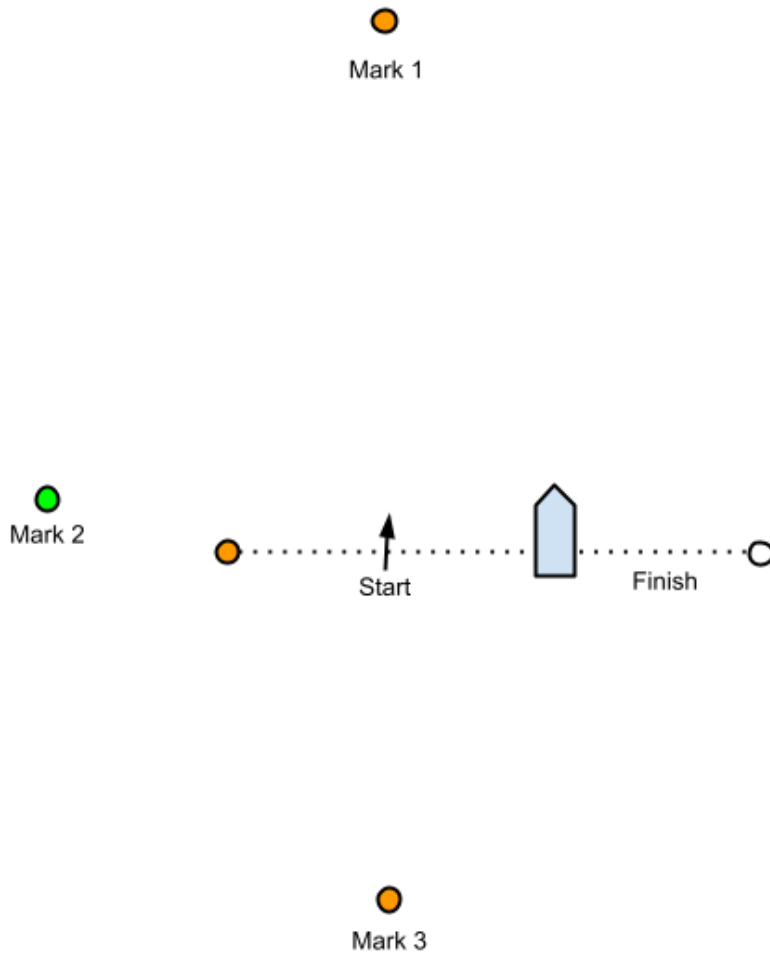


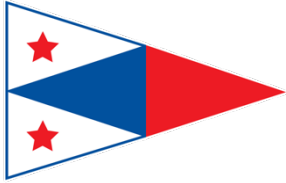


FALL DINGHY REGATTA
ATTACHMENT B
 OFFICIAL DESCRIPTION OF MARKS & COURSES
 RACE VENUE 1

MARK	MARK DESCRIPTION
1	Orange ball set as a windward mark
2	Green ball set as a reach mark
3	Orange ball set as a leeward mark

COURSE	COURSE DESCRIPTION
1	START – 1 – 3 – FINISH
2	START – 1 – 3 – 1 – 3 – FINISH
3	START – 1 – 2 – 3 – FINISH
4	START – 1 – 2 – 3 – 1 – 2 – 3 – FINISH



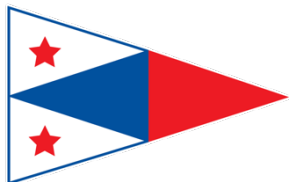


FALL DINGHY REGATTA
ATTACHMENT C
 OFFICIAL DESCRIPTION OF MARKS & COURSES
 RACE VENUE 2

MARK	MARK DESCRIPTION
1	Yellow inflatable cone set as a long windward mark
1o	Orange ball set as an offset mark
2	Red inflatable cone set as a short windward mark
2o	Orange ball set as an offset mark
3	Two yellow inflatable cones set as a gate above the starting line
4	Two yellow inflatable cones set as a gate below the finish line

COURSE	COURSE DESCRIPTION
1	START – 1 – 1o – 4 – FINISH
2	START – 1 – 1o – 3 – 1 – 1o – 4 – FINISH
3	START – 2 – 2o – 4 – FINISH
4	START – 2 – 2o – 3 – 2 – 2o – 4 – FINISH
5	START – 1 – 1o – 3 – 2 – 2o – 4 – FINISH

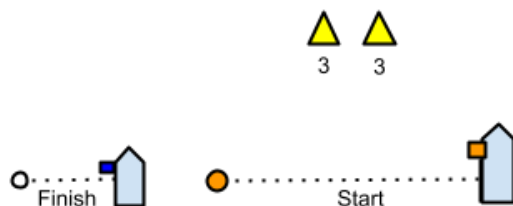


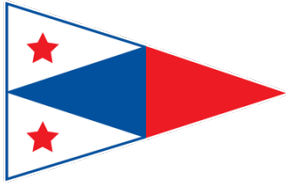


FALL DINGHY REGATTA
ATTACHMENT D
 OFFICIAL DESCRIPTION OF MARKS & COURSES
 RACE VENUE 3

MARK	MARK DESCRIPTION
1	Yellow inflatable cone set as a windward mark
1o	Orange ball set as an offset mark
3	Two yellow inflatable cones set as a gate above the starting line

COURSE	COURSE DESCRIPTION
1	START – 1 – 1o – FINISH
2	START – 1 – 1o – 3 – 1 – 1o – FINISH
3	START – 1 – 1o – 3 – 1 – 1o – 3 – 1 – 1o – FINISH





FALL DINGHY REGATTA
ATTACHMENT E
OFFICIAL DESCRIPTION OF MARKS & COURSES
RACE VENUE 4

MARK	MARK DESCRIPTION
1	Yellow inflatable cone set as a windward mark
2	Yellow inflatable cone set as a leeward mark

COURSE	COURSE DESCRIPTION
1	START – 1 – FINISH
2	START – 1 – 2 – 1 – FINISH
3	START – 1 – 2 – 1 – 2 – 1 – FINISH



Mark 1



Mark 2



Start / Finish