

Double Mixed Offshore World Championship (DMOWC)

3rd edition

October 02 – 08, 2023

Organizing Authority (OA):

The DMOWC is organized by:

ASD NASTROROSA Tour ASD La Maddalena, LNI Taranto under the authority of Federazione Italiana Vela and ORC and under the aegis of the World Sailing.

In cooperation with:

SSI srl. ASD Nastrorosa and Difesa Servizi SpA and the Class Bénéteau Figaro 3

Sailing Instructions

The MARINA MILITARE NASTRO ROSA TOUR DMOWC 2023 and the hosting clubs will be coordinated by Sailing Series International srl, Via Ripamonti 44, 20121 Milano (SSI). The Marina Militare Nastro Rosa is a brand of SSI. The event is managed by MARINA MILITARE ITALIANA and SSI in conjunction with Difesa Servizi SpA, Via Flaminia 335, 00196 Roma.

The 2023 Nastro Rosa DMOWC is a race on Figaro3 boats, double female crew and without on-water assistance from start to finish. Stop-overs could be planned. Boats shall provide their own assistance ashore.

Content

1. RULES
2. CHANGES TO SAILING INSTRUCTIONS
3. NOTICES TO COMPETITORS
4. CODE OF ETHICS
5. SIGNALS MADE ASHORE
6. SCHEDULE
7. CLASS FLAG
8. IDENTIFICATION [DP]
9. RACING AREA
10. THE COURSE
11. MARKS
12. AREAS THAT ARE OBSTRUCTIONS [DP]
13. THE START
14. THE FINISHES
15. CHANGES TO THE RULES, PENALTIES IN TIME AND REDRESS
16. TIME LIMITS
17. HEARING REQUEST
18. RANKING
19. [DP] [NP] SAFETY RULES
20. [DP] [NP] REPLACEMENT OF EQUIPMENT
- 21 [DP] [NP] OUTSIDE ASSISTANCE
- 22 [DP] [NP] TECHNICAL STOPOVERS

23. [DP] [NP] MEASUREMENT AND EQUIPEMENT CONTROL

24. OFFICIAL BOATS

25. SUPPORT BOATS

26 [DP] [NP] LOCATIONS

27. [DP] [NP] HAUL OUT RESTRICTIONS

28. [DP] [NP] DIVING EQUIPMENT AND SUBMARINE PROTECTION

29. PRIZES

The notation '[DP]' in a rule means that the penalty for a breach of the rule may, at the discretion of the protest committee, be less than disqualification.

The notation '[NP]' in a rule means that a boat may not protest another boat for breaking that rule. This changes RRS 60.1(a).

The notation '[SP]' in a rule means that a standard penalty can be imposed by Race Committee without a hearing by the Protest Committee (PC)/Jury (J) - amendments RRS 63.1 and A5.

1. RULES

The event will be governed by:

- 1.1 The rules as defined in the Racing Rules of Sailing (RRS).
- 1.2 The Government and Navigation rules and restrictions.
- 1.3 Part B section II of the International Regulations to Prevent Collisions at Sea (IRPCAS) when replacing Part 2 of the RRS from 30min before every sunset, during night hours and up to 30 min after the local sunrise. Local time will be used.
- 1.4 Offshore Special Rules (OSR) category 2.
- 1.5 Figaro3 Class Rules do not apply. This changes NOR 1.5.
- 1.6 Appendix T will apply.
- 1.7 The Italian Sailing Federation prescriptions do not apply.
- 1.8 In case of translation of these Sailing Instructions, the English text will take precedence.

2. CHANGES TO SAILING INSTRUCTIONS

2.1 Any change to the sailing instructions will be posted on the online Notice Board at t.ly/hwq3 no later than 2 hours before the start of the race in which the change will take effect, except any change to the schedule of race(s) which will be posted by 09:00 pm on the day before it will take effect.

3. NOTICES TO COMPETITORS

3.1 Notices to the competitors will be posted on the digital Official Notice of board available on t.ly/hwq3

3.2 The race office is located in Taranto: c/o Race Office MMNRT at Molo St Eligio, Taranto Italia;

3.3 Phone details of the Race office contacts

Organizing authority	Riccardo Simoneschi	+39335204339
Race Management	Luigi Bertini	+393804977180
Race Committee	Taranto - TBC	TBC
Jury chair	Mina Stanikic	+381 64 4054806
Safety	Andrea Perone	+39 346 604 8010

3.4 At sea, the Race Committee intends to watch and communicate with the competitors on VHF Channel 77.

4. CODE OF ETHICS

4.1 [DP] [NP] Competitors and support persons shall comply with any reasonable request from a regatta official.

4.2 [DP] [NP] Competitors and support persons shall handle any equipment provided by the OA with proper care and seamanship, in accordance with the use instructions and without interfering with its functionality.

4.3 When provided by the organizing authority, boats or crew shall carry, display or wear the following as instructed.

4.3.1 Bow Numbers

4.3.2 Event sponsor advertising..

5. SIGNALS MADE ASHORE

5.1 Signals made ashore will be displayed at the mast located **outside** of the Race Office.

5.2 [DP] AP flag displayed ashore means «The start is postponed; boats shall stay in the harbor without leaving their mooring.» This changes RRS Race Signals AP.

5.3 When AP flag is displayed ashore, “1 minute” is replaced with “not less than 1 hour” and this changes RRS Races Signals AP.

6. SCHEDULE

6.1 Official schedule

Official schedule is detailed in Appendix 1 – Schedule to these Sl.

6.2 Changes to the schedule

In the event of force majeure, the Race Committee, in agreement with the Race Management may:

- change the schedule by advancing or delaying the start of a race;
- call a pitstop mooring mandatory for all boats;
- change the course of the race.

These will not be grounds for redress.

6.3 Obligation for the crews to attend briefings and activities [SP]

Crews (1 member at least) shall attend all briefings and activities detailed in the official schedule (Appendix 1 - Schedule). A sign-in system may be put in place and failure to comply with it will be subject to a 1 hour penalty on course. This changes RRS 63.1.

7. CLASS FLAG

Class Flag is the F I.C.

8. IDENTIFICATION [DP]

8.1 During their permanence in Taranto harbors the boats shall show at forestay the line flag given by the OA when docked.

8.2 Any competitor withdrawing from the race shall remove all event identification items.

9. RACING AREA

Racing area is Adriatic and Ionian Seas.

10. COURSE

10.1 Courses are described in Appendix 2 « Leg », including the order in which any marks or waypoints or islands or virtual gates are to be passed or rounded and the side on which they are to be left.

10.2 No later than the warning signal, the race committee will indicate the course heading to the offset mark, if it is set.

10.3 No later than the warning signal, the race committee will display code flag D if the course includes an offset mark. It will display a green flag to signal that the mark is to be rounded and left on starboard. The absence of green flag means that the mark is to be rounded and left on port (this changes Race Signals).

11. MARKS

11.1 All marks are defined in the Appendix 2 Leg.

11.2 Self-checking

All competitors must self-check when passing/rounding the marks, the virtual gates and at the arrival. They must provide the race committee with these scores upon finishing.

12. AREAS THAT ARE OBSTRUCTIONS [DP]

Areas defined as obstructions are the following:

- 1Nm to THE EDGE SIDE of any (gas/oil/petroleum/..) drilling platform edge;
- 1Nm to THE EDGE SIDE of any sea food/fish area edge;
- 1Nm from THE SHORE SIDE of any island or THE EDGE SIDE of any marine area. Cards and coordinates will refer to Navionics.

This does not apply to any island or shore being part of the course that can not be passed otherwise.

Any infringement will be penalized from 2 hours to disqualification after a hearing.

13. THE START

13.1 The start will be made as per RRS 26 as follows:

Minutes before starting signal	Visual signal	Sound signal	Meaning
5'	F Flag	One	Warning signal
4'	P or Black Flag	One	Preparatory
1'	Preparatory Signal removed	One long	Minute
0'	F flag removed	One	Starting signal

13.2 The starting line will be between a staff displaying an orange flag on the race committee boat at the starboard end and the course side of the starting mark such as defined in Appendix 2 Leg at the port end.

[DP] If a duly identified Race Committee boat is close to the starting mark, competitors shall not pass between the mark and the boat from the preparatory signal till they have started.

Any infringement of this rule will be subject to protest by RC?, the minimum penalty will be 30 min on the time of the race after a hearing.

13.3 When RRS 29.1 or 30.1 applies, if any part of the hull of a boat is on the course side of the starting line at its starting signal and the boat is identified, the race committee shall promptly display Code flag X, and/or may communicate the sail number on VHF channel 77 not sooner than 1 minutes after the starting signal. Absence of VHF transmission or reception will not be grounds for redress (this changes RRS 62.1(a).

[DP] Identified boat not complying with RRS 29.1 or RRS 30.1 by exonerating their premature start, will be subject to a protest by the Race Committee. After a hearing, the minimum penalty will be 4 hours and maximum could be disqualification.

13.4 A boat which does not start from 30 minutes after her starting signal shall:

- inform the race committee as soon as possible of its difficulties, its intentions and estimated time to repair;
- go back to the starting harbor.

Race management and race committee may then grant the boat the authorization to start later stating the time at which she will be allowed to start and eventually, the location of the new starting line.

[DP] On arrival of the race, the crew shall lodge to the jury a written report about the circumstances of the delay within the time limit stated in SI 16.1. The jury may decide to open a hearing and may penalize the boat in time up to a DNS ranking for the race.

14. FINISHES

14.1 Finishing area including the definition of the finishing line are defined in Appendix 2 Leg.

14.2 [DP] If the race committee is missing when a boat finishes, such boat must declare her time of arrival and her position in relation to the close boats to the race committee at the first reasonable opportunity.

14.3 All competitors shall inform the race committee by VHF (channel 77) or mobile of their approach not less than half an hour before crossing the finishing line of each leg.

At night, crews shall light their sail number when crossing the finishing line.

15. CHANGES TO THE RULES, PENALTIES IN TIME AND REDRESS

15.1 Changes to the rules

When RRS Part 2 rules do not apply and are replaced with Part B of the Section II of the IRPCAS, RRS 40.1 applies. This changes RRS 40.1.

15.2 Redress

A boat that have been stopped for a control by the national authority (customs, maritime affairs...) may be entitled to redress. This changes RRS 62.1.

16. TIME LIMITS

16.1 The time limit for the whole race, including any pitstop or technical stop or repair stop, will be 172 hours after the start.

16.2 Boats which do not finish within this time limit and which subsequently do not retire, are not penalized or are not granted redress will be scored as TLE without a hearing. A boat scored as TLE (Time Limit Expired) and her scoring time will be 172 hours. This changes RRS 35, A5.1, A5.2 and A10.

17. HEARING REQUEST

17.1 For each competitor, the protest time limit is 60min after finishing. In case of a finish between 8:00 pm and 8:00 am (local time), the time limit is extended to 09:00 am (local time) on the first day ashore.

17.2 Requests for a hearing shall be lodged electronically via the form available online at t.ly/hwg3. Only requests submitted online will be accepted.

17.3 Notices will be posted on the online notice board as soon as possible to inform the competitors about the hearing in which they are parties or witnesses. These notices may be posted on a physical notice board. Hearings will be held in the protest committee room (location defined in the Appendix 2 "leg"), at the time published on the official notice board. Intentions to protest from the race committee, technical committee or jury will be posted to inform the boats in accordance with RRS 61.1 (b). Should the race committee, technical committee or jury be unable to lodge the protest within the time stated in SI 17.1, competitors will be informed by posting of the extended time (this changes RRS 61.1 (b) and 61.3).

17.4 Infringement to the following rules shall not be grounds for a protest by a boat:

- haul out restrictions;
- sailing the course
- SI 12
- diving equipment and submarine protection;
- communications;
- measurement and equipment checks.

This changes RRS 60.1.

17.5 A party to a hearing may request reopening within 30 minutes after having been informed of the decision.

18. SCORING

18.1 Boats will be scored according with their final positions in each leg. The total score will be sum of the scores of each boat. Ties between boats will be broken in favor of the boat having the shortest total racing time in the legs. This changes RRS A8.

18.2 A competitor penalized for misconduct (RRS 69) will automatically be excluded from the event.

19. [DP] [NP] SAFETY RULES

19.1 Retirement

A boat retiring from the race or recovering ashore or using a pitstop option shall inform the safety management by VHF, by phone, or any other way as soon as possible.

In case of non-compliance with this rule, the protest committee may open a hearing.

19.2 Radio watch - AIS- tracker

VHF channel for the race is 77.

Competitors shall keep permanent watch on both 16 and 77 channels.

19.3 AIS transponders of each boat (mandatory) shall be on function (transmission and reception) from the start until the crossing of the finishing line of the whole race.

Trackers must be put in place according to the race management recommendations and kept in operation during the whole race.

19.4 Safety radio/mobile calls

Crews shall text (primary using mobile phone and then, if no network, the satellite phone) the Safety Manager the following data each day from 7:00 am to 08:00 am and from 7:00 pm to 08:00 pm local time the following information:

- Boat name – Lat Long – Heading – Crew status – Boat status.

Except then in an emergency these information's will be considered reserved and not shared.

In case of failure to receive the calls, competitors shall give their position to another competitor who shall forward the information.

19.5 Logbook

All competitors shall keep his/her logbook up to date by noting the following data at least twice a day:

- heading;
- speed (log);
- weather observations;
- estimated position;
- radio contacts with any other competitor or support boat.

On finish of the race, competitors shall provide, if requested, the race management with their logbook used for the navigation.

19.6 Beverage reserves

Authorized quantity of beverage on board are minimum volume 20 litres, maximum 140 litres

20. [DP][NP] REPLACEMENT OF EQUIPMENT

20.1 Replacement of damaged or lost equipment is subject to the technical committee's approval. Requests for replacement shall be written and lodged as soon as possible.

[SP] Unjustified replacements or technical interventions which may provide a significant advantage may be subject of a protest by the technical committee. After a hearing, the minimum penalty will be 4 hours and maximum could be disqualification.

20.2 Boats shall remain in compliance with the start configuration during the whole event. Any infringement noted by the technical committee may be subject to a protest. [SP] After a hearing, the minimum penalty will be 4 hours and maximum could be disqualification from the race.

20.3 [SP] Only the set of sails declared at the start shall be used during the event. Any sail replacement during the event shall be subject to approval by the race management. After a hearing, the minimum penalty will be 4 hours and maximum could be disqualification from the race.

21 [DP][NP] OUTSIDE ASSISTANCE

21.1 VHF communications between boats shall be done on the race channel (77).

21.2 According to fundamental rule 1 and RRS 41, medical assistance will not be considered as outside assistance. However, should this assistance be provided by another competitor, it shall be subject to a report to the race committee lodged on arrival.

22 [DP][NP] TECHNICAL STOPOVERS

22.1 Each boat can stop anywhere anytime after confirmation given by the OA Safety Management but only at the pitstops defined in Appendix 2.7, the OA will be available to support. Once anchored or docked, other people can come on board.

Provision and repairs are allowed. Towing to enter and exit the harbor is allowed with a 1 nm limit and must not advance the boat towards the finishing line, in accordance with RRS 42.3(i).

22.2 Technical stopover or pitstops cannot be longer than 24 hours for the whole race, all stopovers combined. Minimum time for each stopover or pitstop is 2 hours. Time is counted from the moment the boat is ashore until the moment it resumes the race.

[SP] Competitors who do not respect these durations will be scored as DNF without a hearing and will be subject to a protest from the race committee. After a hearing, the minimum penalty in time will be from 6 hours to maximum will be disqualification.

23. [DP] [NP] MEASUREMENT AND EQUIPEMENT INSPECTION

23.1 Boats and their equipment may be inspected at any time.

23.2 Measurement and safety equipment controls will be performed according to the schedule defined in Appendix 1 - Schedule.

Once the scheduled time is over, the list of non-compliant competitors will be submitted to the jury. After a hearing, the jury may decide a time penalty on the related leg.

23.3 Competitors shall turn on the navigation lights of their boat from 5:30 pm to 07:00 am (local time) each day.

23.4 It is each crew's responsibility to facilitate the sealing operations and to check the integrity of the seals. Any complaint about sealing shall be made as soon as possible after the sealing and no later than 2 hours of the scheduled hour to leave the pontoon.

Sealings

Sealing in their location	Sealings closed
Life raft	Survival water jerrycan
Anchor/Chain bag	Survival container
Engine Throttle	

23.5 At the stopover(s), unsealings shall be limited to what is strictly necessary and will be subject to prior authorization from the technical committee.

23.6 At the finish of a leg, competitors shall be responsible to maintain the compliance of their boat with the race's rules and to keep the sealing in proper state until the control of the boat by the technical committee. Crews shall make sure that seals are easy to access and control.

23.7 Before leaving the pontoons, boats must be in race configuration from 09:00 am the day of the start.

24. OFFICIAL BOATS

Official boats will be identified such as defined in Appendix 2 Leg.

25. SUPPORT BOATS

These boats will ensure in particular the radio calls with the competitors. Their role and conditions of intervention will be specified during the briefings.

26 [DP] [NP] LOCATIONS

Boats must remain in the mooring assigned to them when they are in the harbor at Molo St.Eligio in Taranto, except with the agreement of the race management or race committee. On the starting day boats shall not leave their mooring without consent from the race management or race committee.

27. [DP] [NP] HAUL OUT RESTRICTIONS

Boats shall not be hauled out until the end of the event, except subject and according to the terms of a prior authorization from the technical committee or race committee.

28. [DP] [NP] DIVING EQUIPMENT AND SUBMARINE PROTECTION

Their use must be authorized in writing by the race manager and only for damage check or safety issue and shall comply with local rules (harbour area...)

29. PRIZES

As per NOR 17.

APPENDIX 1

SCHEDULE

A1.1 TIME

Times for each activity are in local time

A1.2 MANDATORY ACTIVITIES

SI 6.3 applies for all activities with (*) in the schedule.

A1.3 SCHEDULE

Date	Time	
Oct 02 nd	13:00 hrs. 13:00 - 17:00 hrs	Boats assignment and boat check Free training
Oct 03 th	09:00 – 12:00hrs 13:00hrs	Free Training Costal Race Start (Coef. 0.13) 20NM.
Oct 04 th		Starting of the WC Course Alpha (Coef. 2.0) 306NM Course Alpha shorted (Coef. 1.75) 261NM Course Bravo (Coef. 2.0) 300NM Course Bravo shorted (Coef. 1.5) 220NM
Oct 05 th -06 th		Racing
Oct 07 th		Boats arriving
Oct 08 th	18:00	Return boats and checks. Closing Ceremony

APPENDIX 2

Course and waypoints

A2.1 COMMUNICATION WITH COMPETITORS

The Race Committee will communicate with competitors on VHF Channel 77, with mobile phone given by the OA or with Satellite telephone given by the OA. The communication system will be explained during the Safety Meeting planned on Oct 02nd.

A2.2 RACE COURSE

The course will be from Taranto to Taranto.

A2.3 Starting mark in Taranto will be conical checked red and white (R/W). Course marks will be conical checked black and white (B/W).

A2.4 The starting line in Taranto will be between a staff displaying an orange flag on the race committee boat at the starboard end and the course side of the starting mark such as defined in A.2.3. See General Charts

A.2.4

Coastal Course	<p>Start Mark (40°27.342'N – 17°14,825E) to be left on starboard (B/W) – Mark (40°28.166'N – 17°14,188E) to be left on port (R/W) – Beacon (40°25.311'N – 17°10,401E) to be left on starboard (B/W)– Mark (40°28.401'N – 17°13,561E) to be left on starboard (B/W) – Mark (40°28.166'N – 17°14,188E) to be left on starboard (R/W) – Mark (40°27.342'N – 17°14,825E) to be left on starboard (B/W) – Mark (40°28.166'N – 17°14,188E) to be left on port (R/W) – Beacon (40°25.311'N – 17°10,401E) to be left on starboard – Mark (40°28.401'N – 17°13,561E) to be left on starboard (B/W) – Finish</p>
WC Course Alpha	<p>Leg 1: Start to Leuca On leg 1 boats are required to pass not less than 0.5 mile from the imaginary line, to be left on port, between 39°49,939N - 18°8,861E and 39°50,704N - 18°7,538E. Boats are also required to pass not less than 0.5 mile from the imaginary line, to be left on port, between 39°54,293N - 18°2,521E and 39°52,287N - 18°4,704E. The area from the imaginary lines to the shore shall be considered as an obstruction Leg 2: from Leuca to Island Othoni to be left on port Leg 3: from Island Othoni to Island Erikoussa to be left on port Leg 4: from Island Erikoussa to Island Othoni to be left on starboard Leg 5: from Island Othoni to Leuca Passing in front of Leuca the boats are required of passing the virtual gate departing from the lighthouse in Santa Maria di Leuca (39°47,796N - 18°22,117E) heading to 180° and from 1 to 7miles from the shore line. Leg 6: from Leuca Gate to a mark at 40°,11,022'N - 16°46,723'E da lasciare a sinistra Leg 7: from mark to Finish</p> <p>In case of shortening the race the RC will cancel Leg 6 and Leg 7. New Leg 6 will "Sail directly from Leuca Gate to Finish"</p>

WC Course Bravo	<p>Leg 1: Start to mark at 38°50,129N - 16°50,889E to be left on port. On leg 1 boats are required to pass not less than 1 mile from the imaginary line connecting Capo Colonna and Cape Rizzuto. The area from the imaginary lines to the shore shall be considered as an obstruction.</p> <p>Leg 2: from mark to mark 40°23,733N – 17°11,297E (yellow flash light 4s/4Nm - StAndrew Cross)</p> <p>Leg 3: from mark to Island di Sant Andrea to be left on starboard</p> <p>Leg 4: from Island Sant Andrea to Finish</p> <p>In case of shortening the race the RC will cancel Leg 2,3 and 4. New Leg 2 will "Sail directly from the Mark to Finish"</p>
-----------------	--

A.2.5 FINISH

Boats are required to call RC on VHF 77 or mobile +393791700487 when a 2Nm from the finishing line.

The finishing line in Taranto will be between a red light at 40°27.7'N 17°13.0'E (to be left on port) and a green light 40°27.7'N 17°12.6'E (to be left on starboard)

A.2.6 Radio watch - AIS - tracker

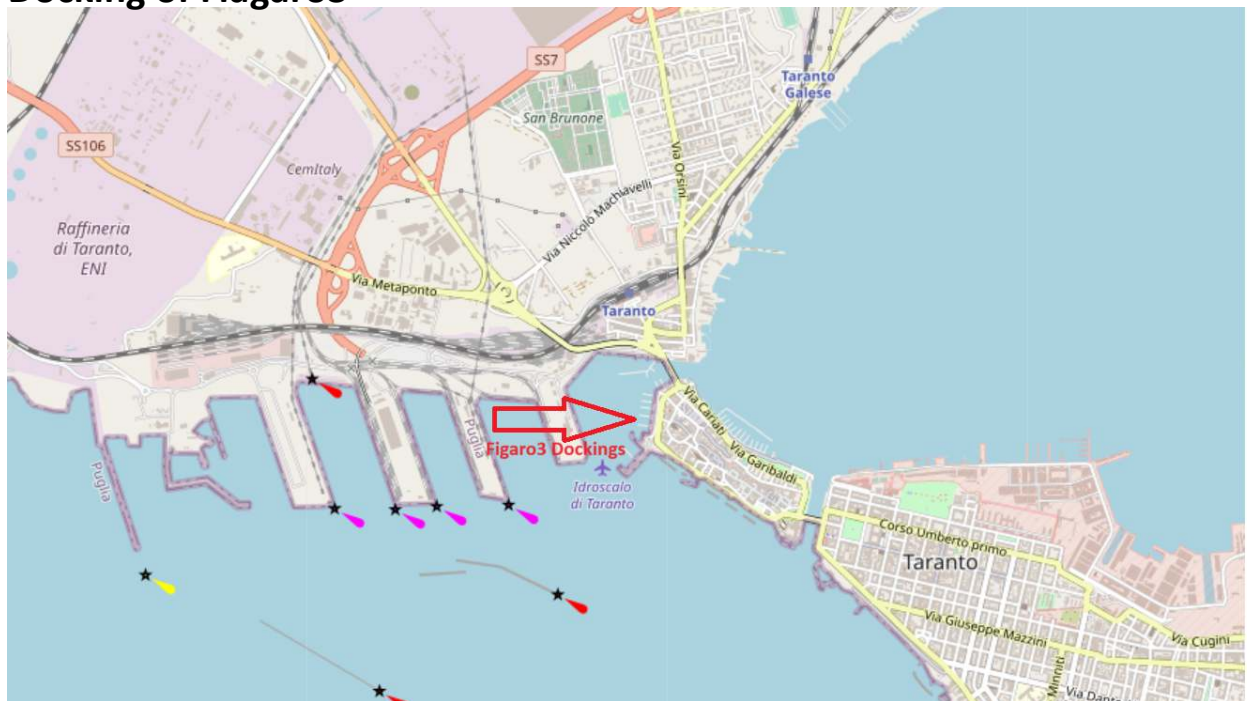
VHF channel for the race is 77.

Competitors shall keep permanent watch on both channel 16 and 77.

AIS transponders and trackers of each boat shall be all time on function (transmission and reception).

Mobile and Satellite telephones of each boat shall be all time on function

**General Charts
Docking of Figaro3**



Starting Area



Finish line in Taranto

