

LOCAL SAILING INSTRUCTIONS (SI)

Genova ACT

Marina Militare Nastro Rosa Tour 2023

Figaro3 Waszp Wingfoil Classes

Jun 30th – Jul 04th, 2023

Sailing Instructions MMNRT 2023_Genova_Figaro3

The Local Sailing Instructions complete and modify the General Sailing Instructions

1 SCHEDULE

When	Where	Figaro3	Wing/Waszp
30 Jun	Genova Open Village @Porto Antico	10:00 – 12:00 Registration 12:00 – 14:00 Boats Assignment 17:30 Media Regatta	
01 Jul	Genova Open Village @Porto Antico	08:00 – 17:00 Training Time 18:30 Opening Ceremony	14:00 – 16:00 Registration. Training
02 Jul	Genova Open Village @Porto Antico	14:00 Racing: Start to La Maddalena 220Nm. Caprera Is to be left on starboard. St.Stefano Is. to to be left on starboard	10:00 Racing
03 Jul	Moving to La Maddalena	Racing	Training
04 Jul	La Maddalena @La Maddalena Village	Arriving	10:00 Racing

2 COURSES

Offshore Regatta: the race committee will display a "D" flag, before warning signal, if the course includes a windward offset mark. He will display a green flag to signal that the mark is to be rounded on starboard. Absence of green flag means that the offset mark is to be rounded on port (this changes Race Signals).

Inshore regatta Figaro Waszp and Wingfoil: Courses as per General SI (GSI) App 1

3 MARKS

The Starting mark will be white cylindrical, Finishing mark will be white cylindrical with a strobe light during night. Course marks will be red

4 THE START

Start procedure

The race will be started using the following signals (change RRS 26):

Signal	Flag and sound signal	Minutes before the start
Warning signal	Foxtrot (Figaro) or Class flag displayed, 1 sound signal	5
Preparatory signal	P or U or Black flag, 1 sound signal	4
One-minute signal	P or U or Black flag removed, 1 long sound signal	1
Start	Foxtrot (Figaro) or Class flag removed, 1 sound signal	0

Starting line

The starting line will be between the staff displaying an orange flag on the race committee boat marking the starboard end of the line and the course side of starting buoy.

Individual recall

Offshore FIGARO: boats observed OCS will receive a 1-hours penalty on the total time of the leg without any hearing. This change RRS 64.2

Inshore regatta Figaro Waszp and Wingfoil: as per Racing Signals in RRS

Late start

Offshore FIGARO: a competitor who has not crossed the starting line 30 minutes after the starting signal will be considered as not having started the race and scored DNS. This change RRS A5

Inshore regatta Figaro Waszp and Wingfoil: a boat/board crossing the starting line later than 2 minutes after her starting signal will be scored Did Not Start without a hearing. This changes RRS A3 and A5

5 CHANGE OF COURSE

Offshore FIGARO3: competitors will be notified of any change to the course by the race committee which will send, via race management, a written message to each boat's mobile and VHF and email address. The message may be backed up by verbal instructions issued by telephone. (This changes RRS 33 and Race signals).

[DP] [SP] Offshore regatta: each competitor shall acknowledge the receipt of each change by sending an email to race management.

Inshore regatta Figaro Waszp and Wingfoil: changes of the course will be done as per RRS 33

6 SHORTENING THE COURSE

Figaro3 competitors will be notified of any shortening of the course by the race committee which will send, via race management, a written message to each boat's given mobile and VHF 72. The message may be backed up by verbal instructions issued by telephone. (This changes RRS 32 and Race signals).

[DP] [SP] Each Figaro3 competitor shall acknowledge the receipt of each change by sending a text message to race management.

Inshore regatta Figaro Waszp and Wingfoil: course will not be shorted

7 THE FINISH (only for offshore regatta)

Finishing line

See the Appendix B.

Competitors must call via official radio channel or by PRO telephone when at 2nm and 1nm from their finish line.

ETA announced

Channel 72 will be the VHF channel for the finish. Mobile phone call will be used also.

Finishing at night or in poor visibility

At night-time, or in poor visibility, competitors must illuminate his sail number with a torch as he crosses the finishing line.

8 RETIRING (only for offshore regatta)

Any intention to retire from the race shall be the subject of an official declaration made in writing and signed by the competitor or his team manager or by email from the official team email address. Retiring shall only become official once Race Management has received the document in question. Retirement will then be declared final.

Any competitor who fails to comply with this procedure will be the subject of a report to the protest committee for a hearing under the provisions of RRS 69.

A competitor who has retired must return all TrackTrack units supplied by the organisation to the Track-Track point in the Village as soon as possible and within the Protest Time Limit (PTL).

9 TIME LIMIT (only for offshore regatta)

Offshore regatta time limit is 60 hours after the starting signal. If, under the opinion of PRO and Race Manager that no boat will finish inside the time limit, the RC can shorten the race (as per LSI 6) and will take into account the boats positions while passing the virtual gates passing at:

43°01,5N (bearing 091° - 271°)

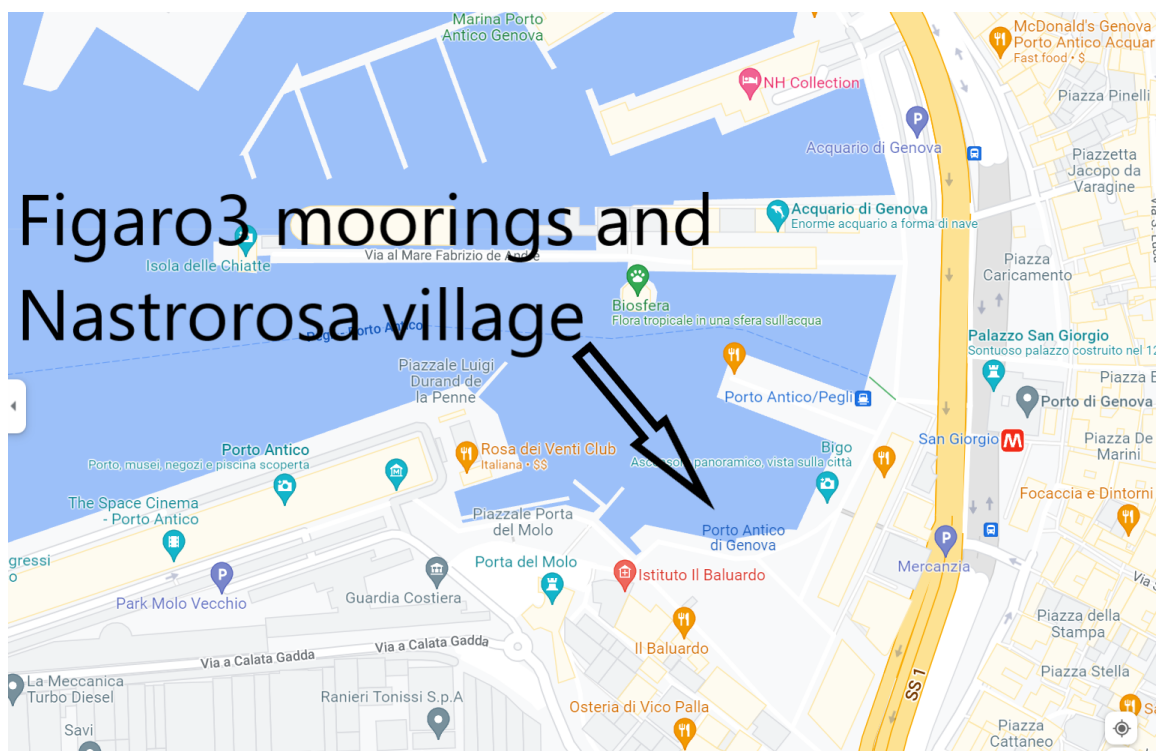
and

41°52,5N (bearing 091° - 271°).

Positions between the virtual gates will not be considered

This change rule 32 and will not be ground for a redress (change RRS 62.1a).

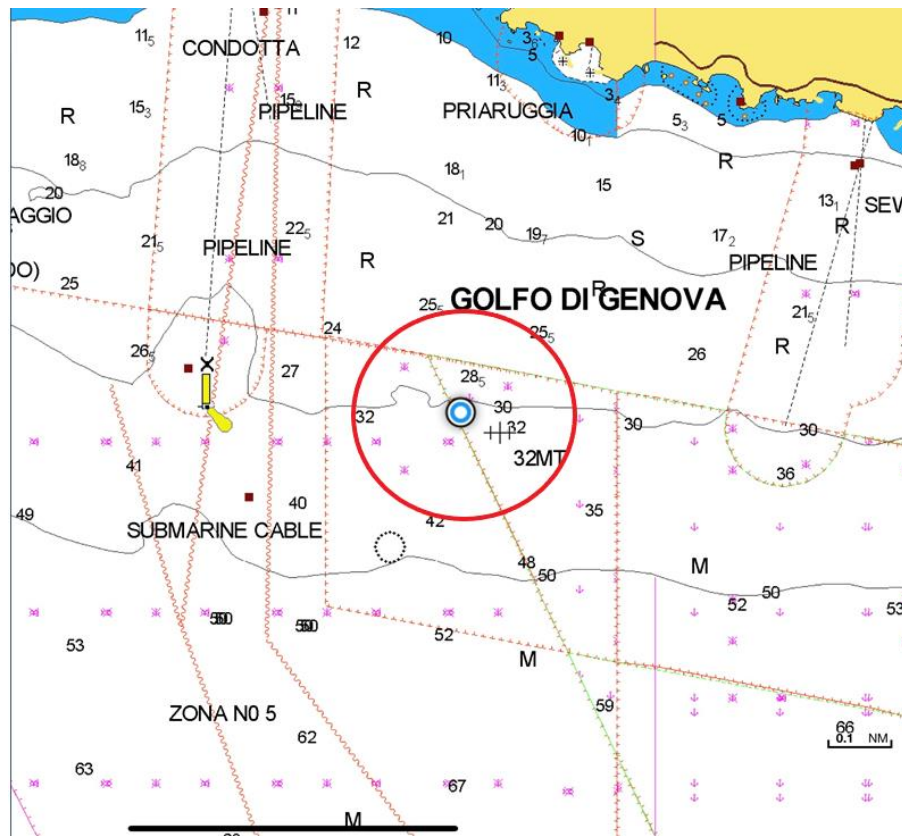
APPENDIX A: Venue



APPENDIX B: Field of play

Starting AREA in GENOVA

The starting line in Genova will be inside a circle of 0,1Nm radius with center at 44°22'550N – 08°59'500E between a staff displaying an orange flag on the race committee boat at the starboard end and the course side of the starting mark such as defined in LSI 3.



Finish Line in La Maddalena

The finish line will be a line between two white marks with strobe during night. Marks will be oriented to 215 degrees starting from red light signal at entrance of Cala Gavetta harbour in La Maddalena. Boats shall notify to PRO their approaching to harbour from 5 miles to harbour using VHF 72 and/or given mobile.



