



Sailing Instructions

Marina Militare Nastro Rosa Veloce

3rd edition



Start on Sunday 5 November 2023
from Venice to Genoa

Organizing Authority (OA): Nastro Rosa Tour ASD with
Y.C.Venezia ASD
LNI Genova sez.Sestri Ponente

In cooperation with SSI srl and Difesa Servizi SpA
Under the aegis of FIV and the Classe Beneteau



Content

1. RULES
2. CHANGES TO SAILING INSTRUCTIONS
3. NOTICES TO COMPETITORS
4. CODE OF ETHICS
5. SIGNALS MADE ASHORE
6. SCHEDULE
7. CLASS FLAG
8. IDENTIFICATION [DP]
9. RACING AREA
10. THE COURSE
11. MARKS
12. [NP][DP]AREAS THAT ARE OBSTRUCTIONS
13. THE START
14. THE FINISHES
15. CHANGES TO THE RULES, PENALTIES IN TIME AND REDRESS
16. TIME LIMITS
17. HEARING REQUEST
18. RANKING
19. [DP] [NP] SAFETY RULES
20. [DP] [NP] REPLACEMENT OF EQUIPMENT
- 21 [DP] [NP] OUTSIDE ASSISTANCE
- 22 [DP] [NP] TECHNICAL STOPOVERS
23. [DP] [NP] MEASUREMENT AND EQUIPEMENT CONTROL
24. OFFICIAL BOATS
25. SUPPORT BOATS
- 26 [DP] [NP] LOCATIONS
27. [DP] [NP] HAUL OUT RESTRICTIONS
28. [DP] [NP] DIVING EQUIPMENT AND SUBMARINE PROTECTION
29. PRIZES



PREAMBLE

The 2023 Nastro Rosa Veloce is a non-stop race on Figaro3 boats, double and/or double-mixed crew and without on-water assistance from Venice to Genoa. Eight stop-overs are planned where boats may receive assistance ashore

The notation '[DP]' in a rule means that the penalty for a breach of the rule may, at the discretion of the protest committee, be less than disqualification.

The notation '[NP]' denotes a rule that shall not be grounds for protest by a boat. This changes RRS 60.1(a).

The notation '[SP]' denotes a rule for which a standard penalty may be applied by the Race Committee without a hearing by the Protest Committee (PC)/Jury (J) – this amendment RRS 63.1 and A5.

1. RULES

The event will be governed by:

- 1.1 The rules as defined in the Racing Rules of Sailing (RRS).
- 1.2 No national Prescription will apply.
- 1.3 The Italian Government and Navigation rules and restrictions.
- 1.4 Part B section II of the International Regulations to Prevent Collisions at Sea (IRPCAS) replaces Part 2 of the RRS from 30min before every sunset, during night hours and at the local sunrise and until 15 nm to the finishing line. Local time and official sunset/sunrise time will be used.
- 1.5 Offshore Special Rules (OSR) category 2.
- 1.6 Figaro3 Class Rules will not apply.
- 1.7 In case of translation of these Sailing Instructions, the English text will take precedence.

2. CHANGES TO SAILING INSTRUCTIONS

2.1 Any change to the sailing instructions will be posted on the online Notice Board at t.ly/QcbbE no later than 2 hours before the start of the race in which the change will take effect, except any change to the schedule of race(s) which will be posted by 09 :00 pm on the day before it will take effect.

3. NOTICES TO COMPETITORS

3.1 Notices to competitors will be posted on the digital Official Notice of board available on t.ly/QcbbE.

3.1.1 A WhatsApp group with all competitors mobile number and mobile given number will be created. This will NOT be used as official notice board but just to inform the competitors. Missing message or reception will not be grounds for redress. This change RRS 62.1a

3.2 The race office is located:

- In Venice: Arsenale di Venezia - Sestiere Castello 2168, 30122 Venezia Italia
- In Genova: c/o Museo del Mare Calata Ansaldo De Mari, 1, 16126 Genova GE, Italia;

3.3 Phone details of the Race office contacts



Organizing authority (OA)	Riccardo Simoneschi	+39335204339
Race Management (OA)	Luigi Bertini	+393804977180
Race Committee(s)	G.B. Albrizzi (Venice) Maurizio Buscemi (Genova)	+39 3470803366 +393483301075
Jury chair	Claudio Uras	+39 347 6426196
Safety Committee	Andrea Perone	+39 346 604 8010

3.4 At sea, the Race Committee intends to watch and communicate with the competitors on VHF Channel 77.

4. CODE OF ETHICS

4.1 [DP][NP] Competitors and support persons must comply with the justified requests of the officials.

4.2 [DP] [NP] Competitors and support persons must manage the equipment and display the advertising material provided by the organizing authority with care, in a seamanlike manner, in accordance with the use instructions and without interfering with their functioning.

5. SIGNALS MADE ASHORE

5.1 Signals made ashore will be displayed at the mast located on Race Committee boat:

5.2 [DP] AP flag displayed ashore means «The start is postponed; boats shall stay in the harbour without leaving their mooring.» This change RRS Race Signals

5.3 When AP flag is displayed ashore, the warning signal cannot be made less than 1 hour after the lowering of AP flag (this changes Races signals).

6. SCHEDULE

6.1 Official schedule

Official schedule is detailed in Appendix 1 – Schedule to these SI.

6.2 Change of the schedule

In the event of force majeure, the Race Committee, in agreement with the Race Management may:

- change the schedule by advancing or delaying the start of a race;
- call a pitstop mooring mandatory for all boats
- change the course of the race. (NoR 5.2).

These will not be used to lodge any request of redress. This changes 60.1(b) and 62.1a.

6.3 Obligation for the crews to attend briefings and activities:

Crews (1 member at least) shall mandatory attend all briefings and activities detailed in the official schedule (appendix 1 - Schedule). A sign-in system will be put in place and any absence will be subject to a 1 hour penalty on course. This changes RRS 63.1.



7. CLASS FLAG

Class Flag is the F Flag of I.C.

8. IDENTIFICATION [DP]

8.1 During their permanence in Venice and Genova harbors the boats shall show at forestay the line flag given by the OA when docked

8.2 Use of personal sponsor on any part of the boat or sails shall be approved by the OA in writing.

8.3 Any competitor retiring from the race shall remove all identification items.

9. RACING AREA

Racing area is between Venice and Genova. This include Adriatic, Ionian, Tyrrhenian and Ligurian Seas and also Sicily Channel. Strait of Messina is not part of the course.

10. COURSE

10.1 Courses are described in Appendix 2« Leg », including the order in which any marks or waypoints or islands or virtual gates are to be passed or rounded and the side on which are to be left.

10.2 No later than the warning signal, the race committee will display code flag D if the course includes an offset mark. It will display a green flag to signal that the mark is to be rounded and left on starboard. The absence of green flag means that the mark is to be rounded and left on port (this changes Race Signals).

10.3 No later than the warning signal, the race committee will indicate the course heading to the offset mark if any.

11. MARKS

11.1 All marks are defined in the Appendix A.2.2 RACE COURSE.

11.2 Self-record (see SI 19.5)

All competitors must self-record when passing/rounding the marks, the virtual gates and crossing the finishing line. They must provide the race committee with these records after finishing.

12. AREAS THAT ARE OBSTRUCTIONS [DP]

12.1 Areas defined as obstructions are the following:

- 0,5Nm to THE EDGE SIDE of any (gas/oil/petroleum/..) drilling platform edge;

- 0,5Nm to THE EDGE SIDE of any sea food/fish area edge;

- 0,5Nm from THE SHORE SIDE of any island or THE EDGE SIDE of any marine area. Cards and coordinates will refer to Navionics.

12.2 [NP] Boats shall not enter or cross areas that are obstructions.

12.3 [NP] Boats sailing inside the areas defined as obstructions in 12.1 will be penalized from 2 hours to disqualification without a hearing.

13. THE START



13.1 The start will be made as per RRS 26:

Minutes before starting signal	Visual signal	Sound signal	Meaning
5'	F Flag	One	Warning signal
4'	P, I or Black	One	Preparatory
1'	Preparatory	One long	Minute
0'	F flag removed	One	Starting signal

13.2 The starting line will be between a staff displaying an orange flag on the race committee boat at the starboard end and the course side of the starting mark such as defined in Appendix 2 Leg at the port end. [DP] If a duly identified Race Committee boat is close to the starting mark, competitors shall not pass between the mark and the boat from the preparatory signal till they have started. Any infringement of this rule will be subject to protest, the minimum penalty will be 30 min on the time of the race after a hearing.

13.3 When RRS 29.1 or 30.1 applies, if any part of the hull of a boat is on the course side of the starting line at its starting signal and the boat is identified, the race committee shall promptly display Code flag X, and may communicate the sail number on VHF channel 77 not sooner than 1 minute after the starting signal. Absence of VHF transmission or reception will not be grounds for redress (this changes RRS 62.1(a)).

[DP] Identified boat not complying with RRS 29.1 or RRS 30.1 by exonerating their premature start, will be subject to a protest from the race committee. After a hearing, the minimum penalty will be 4 hours and maximum could be disqualification.

13.4 A boat which does not start no later than 30 minutes after her starting signal must:

- inform the race committee as soon as possible of its difficulties, its intentions and estimated time to repair; and
- sail back to the starting harbor.

13.5 Race management and race committee may then grant the boat the authorization to start later stating the time at which she will be allowed to start and eventually, the location of the new starting line.

13.6 [DP] On finishing the race, the crew shall lodge to the jury a written report about the circumstances of the delay within the time limit stated in SI 17.1. The jury may decide to open a hearing and may penalize the boat in time up to a score of DNS for the race.

14. FINISHES

14.1 Finishing area including the definition of the finishing line are defined in Appendix 2 Leg.

14.2 [DP] If the race committee is missing when a boat finishes, such boat must declare her finishing time and her position in relation to the close boats to the race committee at the first reasonable opportunity using given mobile. The number to be used will be +393483301075 (RC Genova); an answer from the RC will not be necessary. Lack of message will be penalized with 1h.



14.3 All competitors shall also inform the race committee by VHF (channel 77) of their approach not less than half an hour before crossing the finishing line.

At night, crews shall light their sail number when crossing the finishing line.

15. CHANGES TO THE RULES, PENALTIES IN TIME AND REDRESS

15.1 Changes to the rules

When RRS Part 2 rules do not apply and are replaced with Part B t of the Section II of the IRPCAS, RRS 44.1 applies. This changes RRS 44.1.

15.2 Redress

A boat having been stopped for a control by the national authority (customs, maritime affairs....) may be entitled to redress. This changes RRS 62.1.

16. TIME LIMITS

16.1 For the whole race, including any pitstop or technical stop or repair stop or crew replacement, the time limit to finish the race will be 12 days (288 hours) after the start.

16.2 Boats which do not finish within the time limit in 16.1 and which subsequently do not retire, are not penalized or are not granted redress will be scored as TLE without a hearing. This changes RRS 35, A5.1, A5.2 and A10.

17. HEARING REQUEST

17.1 For each boat, the protest time limit is 90 min after finishing. In case of a finish by night between 8:00 pm and 8:00 am (local time), the time limit is extended to 10:00 am (local time) on the first day ashore.

17.2 Forms are available online at t.ly/QcbbE

17.3 Notices will be posted on the digital notice board as soon as possible to inform the competitors about the hearing in which they are parties. These notices may be also posted on a physical notice board. Failure to post on a physical notice board shall not be ground for redress. Hearings will take place in the protest committee room (location defined in the Appendix 2“leg”). They will start at the time specified on the board.

Intentions to protest from the race committee, technical committee or jury will be posted to inform the boats in accordance with RRS 61.1 (b). Should the race committee, technical committee or jury be unable to lodge the protest within the time stated in SI 17.1, competitors will be informed by posting of the extended time (this changes RRS 61.1 (b) and 61.3).

17.4 Infringement to the following rules cannot be protested by a boat:

- haul out restrictions;
- sailing the course
- SI 12
- diving equipment and submarine protection;
- communications;
- measurement and equipment check.

This changes RRS 60.1.



17.5 A party to a hearing may request reopening within 30 minutes after having been informed of the decision. This changes RRS 66.2.

18. SCORING

18.1 Ties between boats will be broken in favour of the boat having the shortest racing time in the leg between Amalfi Gate and Pisa Gate. This changes RRS A8.

19. [DP] [NP] SAFETY RULES

19.1 Retirement

A boat retiring from the race or recovering ashore or using a pitstop option shall inform the safety management by VHF, by phone, by satellite or any other way as soon as possible. In case of non-compliance with this rule, the protest committee may open a hearing.

SAFETY MANAGEMENT Andrea Perone: +39 346 604 8010

19.2 Radio watch - AIS - tracker

VHF channel for the race is 77.

Competitors shall keep permanent watch on both 16 and 77 channels.

19.3 AIS transponders of each boat (mandatory) shall be on function (transmission and reception) from the start until the crossing of the finishing line of the whole race.

Trackers must be put in place according to the race management recommendations and kept in operation during the whole race.

19.4 Safety procedure:

a) [NP] All boats shall inform, with a message, Safety Manager 2 times per day (from 07:00 to 08:00 am/pm) about the position (lat/long), bearing, boat status, and crew status. If no mobile data is available a text message using satellite shall be used. The number to be sent is 00393466048010; an answer from the Safety Manager will not be necessary. [SP] Any lack of message will be penalized with 1h.

b) In case of emergency first call on VHF 16 and immediately after make a call using the Safety Manager mobile (00393466048010) using any working phone at the disposal of the crew at the moment.

In case of failure to receive the calls, competitors shall give their position to another competitor who shall forward the information.

19.5 Logbook

All competitors shall keep his/her logbook up to date by noting the following data at least 4 times per day:

- heading;
- speed (log);
- weather observations;
- estimated position;
- radio contacts with any other competitor or support boat.



Upon finishing, competitors shall provide, if requested, the race management and/or the race committee with their logbook used for the navigation (Navionics track data will be accepted).

19.6 Beverage reserves

Authorized quantity of beverage on board are minimum volume 30 litres, maximum 140 litres. Emergency water/jerrycan shall be 10 liters.

20. [DP] [NP] REPLACEMENT OF EQUIPMENT

20.1 Replacement of damaged or lost equipment is subject to the technical committee's approval. Requests for replacement shall be written and lodged as soon as possible.

Unjustified replacements or technical interventions which may provide a significant advantage may be subject of a protest by the technical committee. After a hearing, the minimum penalty will be 4 hours and maximum could be disqualification.

20.2 Boats shall remain in compliance with the start configuration during the whole event.. Any infringement noted by the technical committee may be subject to a protest. After a hearing, the minimum penalty will be 4 hours and maximum could be disqualification from the race.

20.3 Only the set of sails declared at the start shall be used during the event. Any sail replacement during the event shall be subject to approval by the race management. After a hearing, the minimum penalty will be 4 hours and maximum could be disqualification from the race.

21 [DP] [NP] OUTSIDE ASSISTANCE

21.1 VHF communications between boats shall be done on the race channel (77).

21.2 According to fundamental rule 1 and RRS 41, medical assistance and/or help for a crew member, who is ill, injured or in danger, helping to get clear after a collision will not be considered as outside assistance. However, this assistance should be provided by another competitor and it shall be subject to a report to the race committee lodged on finishing the race.

22 [DP] [NP] TECHNICAL STOPOVERS

22.1 Each boat can stop anywhere any time after confirmation given by the OA Safety Management but only at the pitstops defined in Appendix 2.7, the OA will be available to support. Once anchored or docked, other people can come on board.

Provision and repairs are allowed. Towing to enter and exit the harbor is allowed with a 1 nm limit and must not advance the boat towards the finishing line, in accordance with RRS 42.3(i).

22.2 Technical stopover or pitstops cannot be longer than 48 hours for the whole race, all stopovers combined. Minimum time for each stopover or pitstop is 2 hours. Time is counted from the moment the boat is ashore until the moment it resumes the race.

Competitors who do not respect these durations may be subject to a protest from the race committee. After a hearing, the minimum penalty in time will be from 6 hours to maximum will be disqualification.

23. [DP] [NP] MEASUREMENT AND EQUIPEMENT CONTROL

23.1 Boats and their equipment may be controlled at any time.



23.2 Measurement and safety equipment controls will be performed according to the schedule defined in Appendix 1 - Schedule.

Once the scheduled time is over the controls, the list of non-compliant competitors will be submitted to the jury. After a hearing, the jury may decide a time penalty on the related leg.

23.3 Competitors shall turn on the navigation lights of their boat from 5:30 pm to 07:00 am (local time) each day.

23.4 It is each crew's responsibility to facilitate the sealing operations and to check the integrity of the seals. Any complaint about sealing shall be made as soon as possible after the sealing and no later than 2 hours of the scheduled hour to leave the pontoon.

Sealings

Sealing in their location	Sealings closed
Life raft Anchor/Chain bag Engine Throttle	Survival water jerrycan Survival container

23.5 At the stopover(s), unsealing's shall be limited to what is strictly necessary and will be subject to prior authorization from the technical committee.

23.6 At the finish of a leg, competitors shall be responsible to maintain the compliance of their boat with the race's rules and to keep the sealing in proper state until the control of the boat by the technical committee. Crews shall make sure that seals are easy to access and control.

23.7 Before leaving the docking, boats must be in race configuration from 09:00 am the day of the start.

24. OFFICIAL BOATS

Official boats will be identified such as defined in Appendix 2Leg.

25. SUPPORT BOATS

These boats will ensure in particular the radio calls with the competitors. Their role and conditions of intervention will be specified during the briefings.

26 [DP] [NP] LOCATIONS

Boats must remain in the mooring assigned to them when they are in the harbor at Venezia Arsenale, except with the agreement of the race management or race committee.

On the starting day boats shall not leave their mooring without consent from the race management or race committee.

27. [DP] [NP] HAUL OUT RESTRICTIONS

Boats shall not be hauled out from October 30, 2023 18:00 until the end of the event, except subject and according to the terms of a prior authorization from the technical committee or race committee.



28. [DP] [NP] DIVING EQUIPMENT AND SUBMARINE PROTECTION

Their use must be authorized in writing by the race manager and only for damage check or safety issue and shall comply with local rules (harbour area...)

29. PRIZES

As per NOR 15.

APPENDIX 1 SCHEDULE

A1.1 TIME

Times for each activity are in local time

A1.2 MANDATORY ACTIVITIES

SI 6.3 applies for all activities with (*) in the schedule.

A1.3 SCHEDULE IN VENICE

Date	Time	
Wednesday, 1 November	15:00 hrs.	Boats assignment and boat check (*)
Thursday, 2 November	09:00 – 16:00 hrs.	Free training
Friday, 3 November	09:00 – 16:00 hrs.	Free training
Saturday, 4 November	09:00 -16:00 hrs.	Free training
	17:30 hrs.	Opening Ceremony (*)
Sunday, 5 November	11:30 hrs.	Starting time in front of San Marco square (*)

Any damage occurring after the boat assignments will not be in charge or to repair of the OA. Teams will be in charge of it except as in NOR 14.4.

Depending on weather conditions, the Race Management may move the starting time on 4 or 6 November. Crews will be informed of this change of schedule by an amendment published at the latest on Friday, 3 November at 20:00 hrs.

A1.4 SCHEDULE IN GENOVA

Date	Hour	
From Wednesday November 15		Estimated finish of the leaders



Thursday November 16		Estimated finish of remaining boats
Friday November 17	11h30*	Time Limits (*or 288h after the starting signal)
	19h30	Prize giving(location TBD)
Saturday November 18	09h00	Return boats and Departure

APPENDIX 2

Course and waypoints

A.2.1 COMMUNICATION WITH COMPETITORS

The Race Committee will communicate with competitors on VHF Channel 77, with mobile phone given by the OA or with Satellite telephone given by the OA. The communication system will be explained during the Safety Meeting planned on Nov 04^h.

A.2.2 RACE COURSE

The course will be from Venice to Genova leaving Sicily on starboard and passing between Marettimo Island and Favignana Island, leaving Ustica Island on port, Capri Island on port (AMALFI Gate), Ischia Island on port, Giglio Island on starboard, Gorgona Island on port (PISA Gate).

A.2.2.1 There will be a number of virtual gates during the race. Boats are requested to pass through all the virtual gates. [SP][NP] Any boat failing to pass any gate will be penalized from 2 hours to disqualification without a hearing.

Virtual gates positions

43°42',3 N 013°39',9 E	Ancona	43°42',3 N 013°53',8 E
41°53',6 N 016°17',9 E	Vieste	41°53',7 N 016°30',2 E
40°43',4 N 018°05',2 E	Brindisi	40°44',9 N 018°18',8 E
8°52',7 N 017°15',6 E	Crotone	38°52',3 N 017°28',5 E
37°03',9 N 013°56',4 E	Marina di Licata	36°56',9 N 013°56',5 E

Boats are required to pass the imaginary line that connects the waypoints except in the attempt to reach a harbour or a pitstop:

39°01',8 N 017°16',0 E	38°51',6 N 017°02',7 E	To starboard
---------------------------	---------------------------	--------------



37°55',9 N 012°06',6 E	38°00',4 N 012°05',0 E	To port	
37°54',2 N 012°15',2 E	38°00',4 N 012°15',2 E	To starboard	
38°37',7 N 013°03',8 E	38°36',6 N 013°19',0 E	38°47',5 N 013°19',0 E	To port

A.2.3 Starting mark in Venice will be red/white checked conical. Finishing mark in Genova will be cylindrical yellow and will have a strobe light during nighttime .

A.2.4 The starting line in Venice will be between a staff displaying an orange flag on the race committee boat at the starboard end and the course side of the starting mark such as defined in A.2.3. See A.2.8

A.2.5 FINISH

Boats are required to call RC on VHF 77 or mobile +393483301075 when a 2Nm from the finishing line.

The finishing line will be inside a circle of 0,1Nm radius with center at 44°22'550N – 08°59'500E. The finishing line will be between a staff displaying a blue flag on the race committee boat (to me left on starboard) and the finishing mark (to be left on port) such as defined in A.2.3. See A.2.8

A.2.6 Radio watch - AIS - tracker
VHF channel for the race is 77.

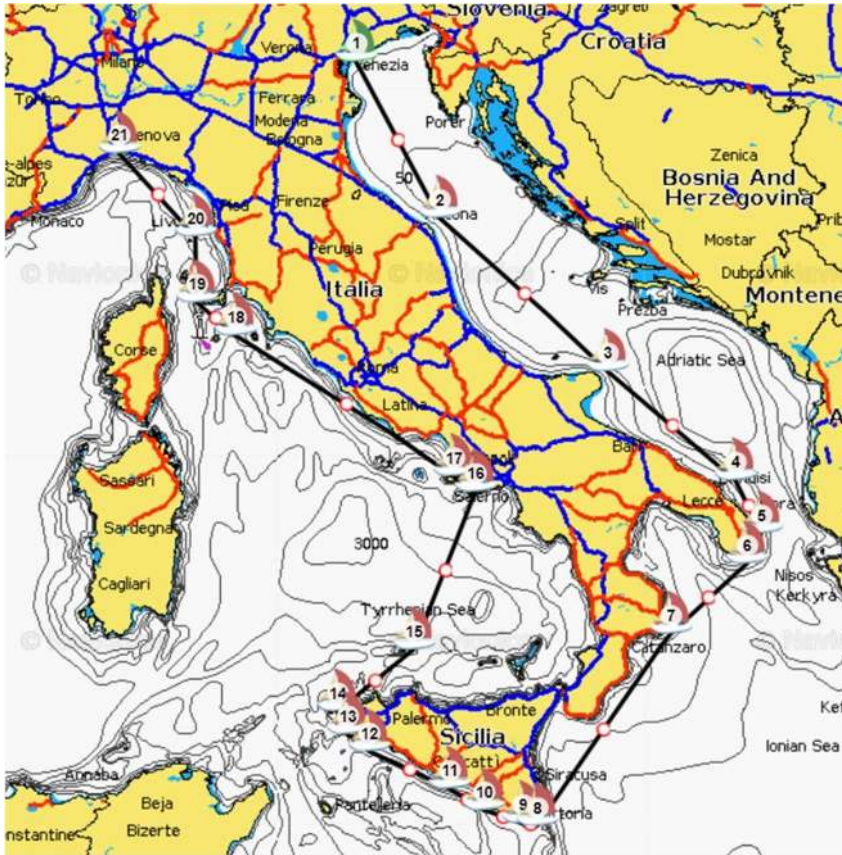
Competitors shall keep permanent watch on both channel 16 and 77.
AIS transponders and trackers of each boat shall be all time on function (transmission and reception).
Mobile and Satellite telephones of each boat shall be all time on function

A.2.7 OA will plan to support boats during the race with ashore teams with spare parts and rigging items. Boats are required to call using mobile, satellite or VHF77 the Safety Manager asap at any time they intend to have support. Safety Manager, once informed about the nature of the support requested, will define how and where the ashore team will meet the each other. Safety Manager can decide not to give support to a boat if any technical needing will not meet. This will not be ground for any request of redress.

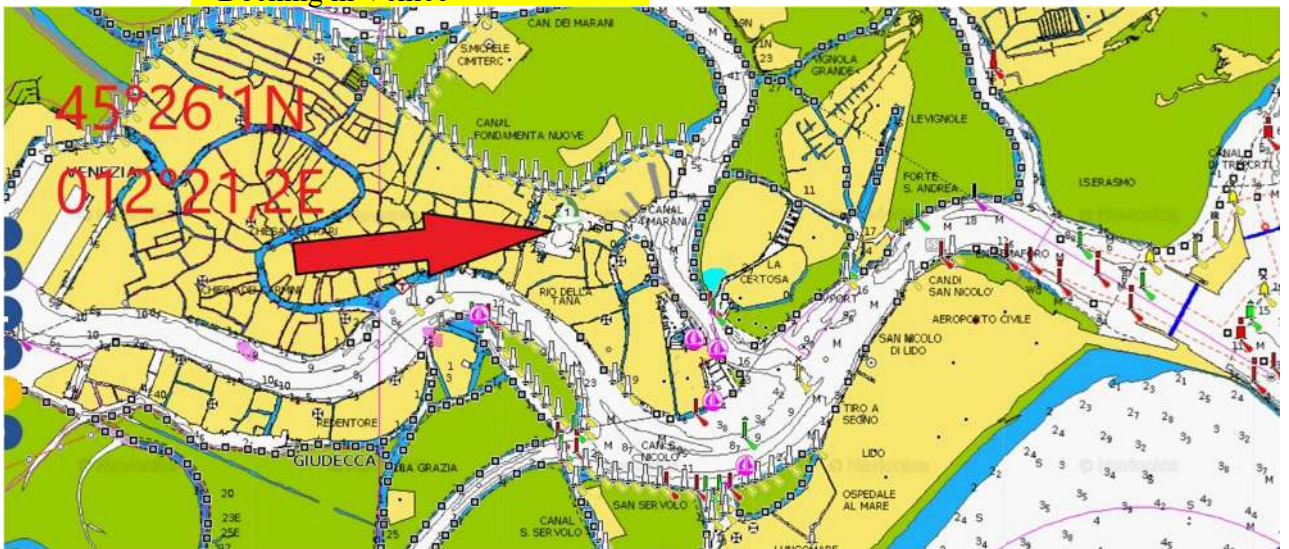
A.2.8 General Chart



IL GIRO DELL'ITALIA A VELA VELOCE

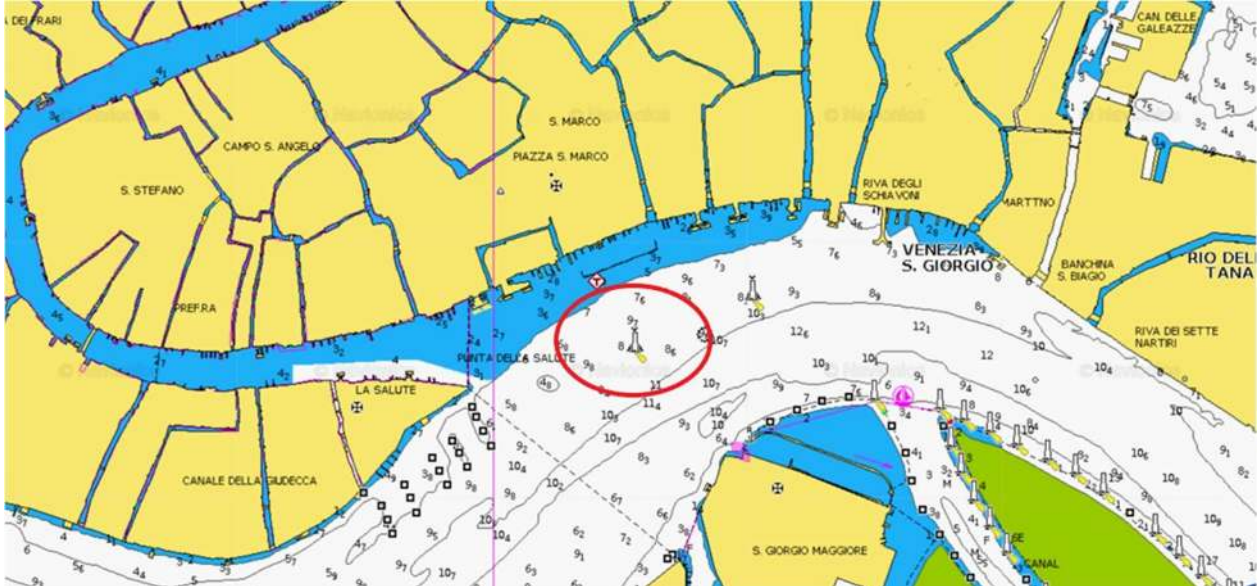


Docking in Venice

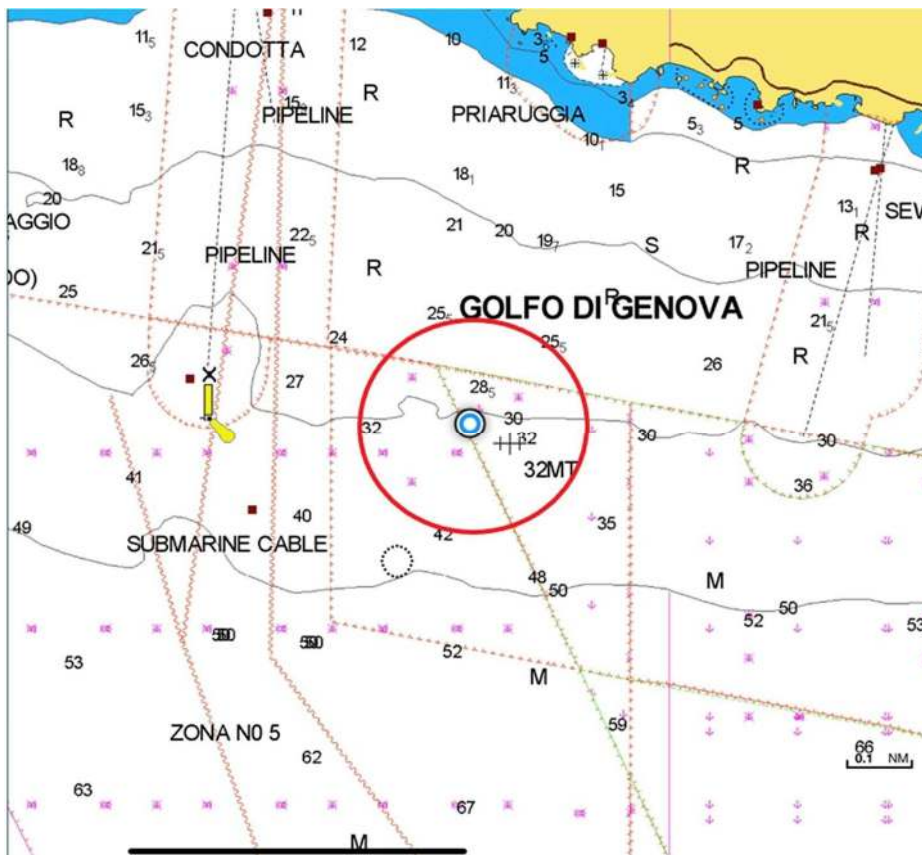




Starting Line in Venice



Finishing Line in Genova





Docking in Genova

