

# 2023 FORMULA KITE YOUTH EUROPEAN CHAMPIONSHIPS & MASTERS WORLDS

## LOCAL SAILING INSTRUCTIONS

These LSI complement the NoR/SI

Issued 23 May 2023

## 6 FORMAT AND SCORING

---

- 6.3 For the Formula Kite U21 Men, the format will be a Qualifying Series, followed by a Final Series, followed by a Medal Series.  
For the Formula Kite U21 Women, the format will be a Single Opening Series, followed by a Medal Series.  
For the KiteFoil Open Masters, the format will be a Single Series.

## 8 COURSES AND RACING AREAS

---

- 8.5 Course Marks will be:
- |                   |                               |
|-------------------|-------------------------------|
| Mark 1, 2, 3, 4:  | Yellow cylindrical marks      |
| Mark P, 5         | Red cylindrical marks         |
| Finishing marks : | RC vessel and yellow pin mark |
| Starting marks    | RC vessels                    |

## 12 COMMUNICATION WITH COMPETITORS

---

12.2.1 The Official Flag Pole is located in front of the race office on the side of the launching area.

12.9 Class flags are:

Formula Kite Boys Yellow/Gold: Yellow flag with class logo

Formula Kite Boys Blue/Silver: Blue flag with class logo

Formula Kite Girls: Purple flag with class logo

KiteFoil Open Masters: White flag

12.10 The race committee will communicate on VHF channel 72.

## 18 PROTESTS, PENALTIES AND REQUESTS FOR REDRESS

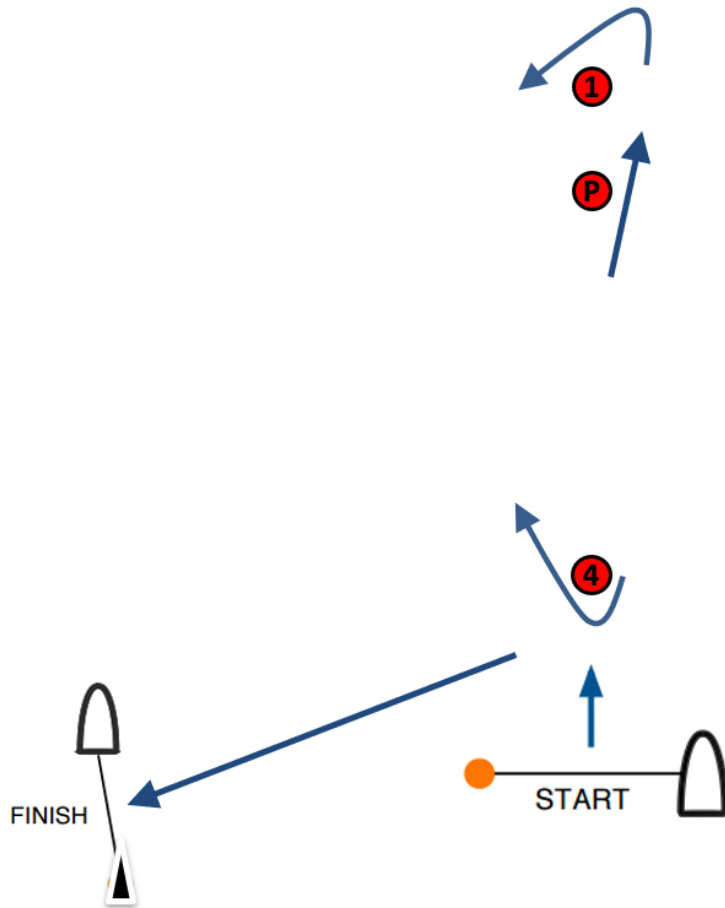
---

18.2.1 The protest time limit is 30 minutes after the last kiteboard has finished the last race of the day for that fleet, or when AP over A, or N over A is displayed.

# ADDENDUM 1

## COURSE DIAGRAMS

---

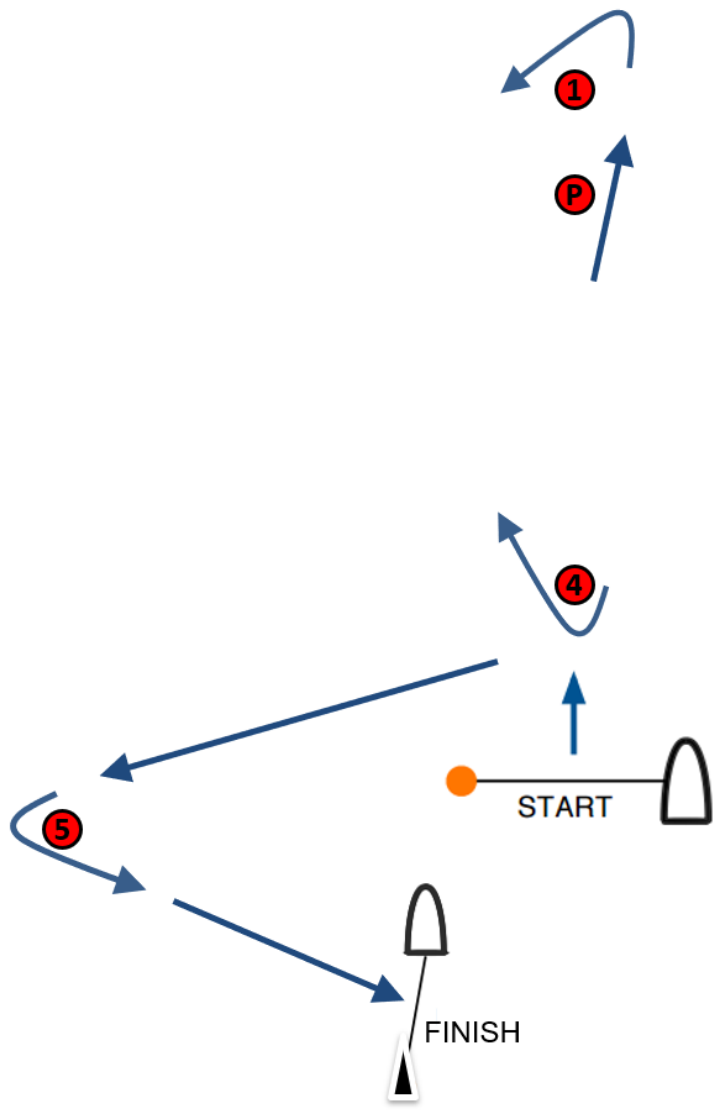


**X 1: Start – Pp – 1p – Pp – 4s – Finish**

**X 2: Start – Pp – 1p – Pp – 4s – Pp – 1p – Pp – 4s – Finish**

**X 3: Start – Pp – 1p – Pp – 4s – Pp – 1p – Pp – 4s – Pp – 1p – Pp – 4s – Finish**

All distances and course angles are approximate.

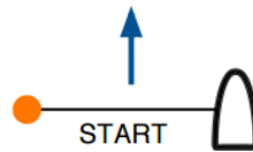
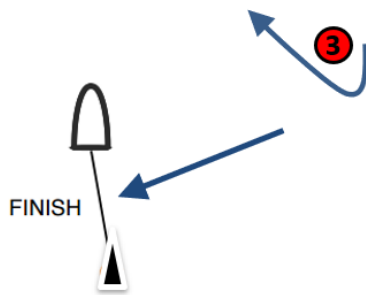
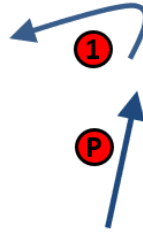
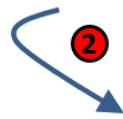


**XS 1: Start – Pp – 1p – Pp – 4s – 5p – Finish**

**XS 2: Start – Pp – 1p – Pp – 4s – Pp – 1p – Pp – 4s – 5p – Finish**

**XS 3: Start – Pp – 1p – Pp – 4s – Pp – 1p – Pp – 4s – Pp – 1p – Pp – 4s – 5p – Finish**

All distances and course angles are approximate.



**B 1: Start – Pp – 1p – 2p – 3s – Finish**

**B 2: Start – Pp – 1p – 2p – 3s – 2p – 3s – Finish**

**B 3: Start – Pp – 1p – 2p – 3s – 2p – 3s – 2p – 3s – Finish**

All distances and course angles are approximate.