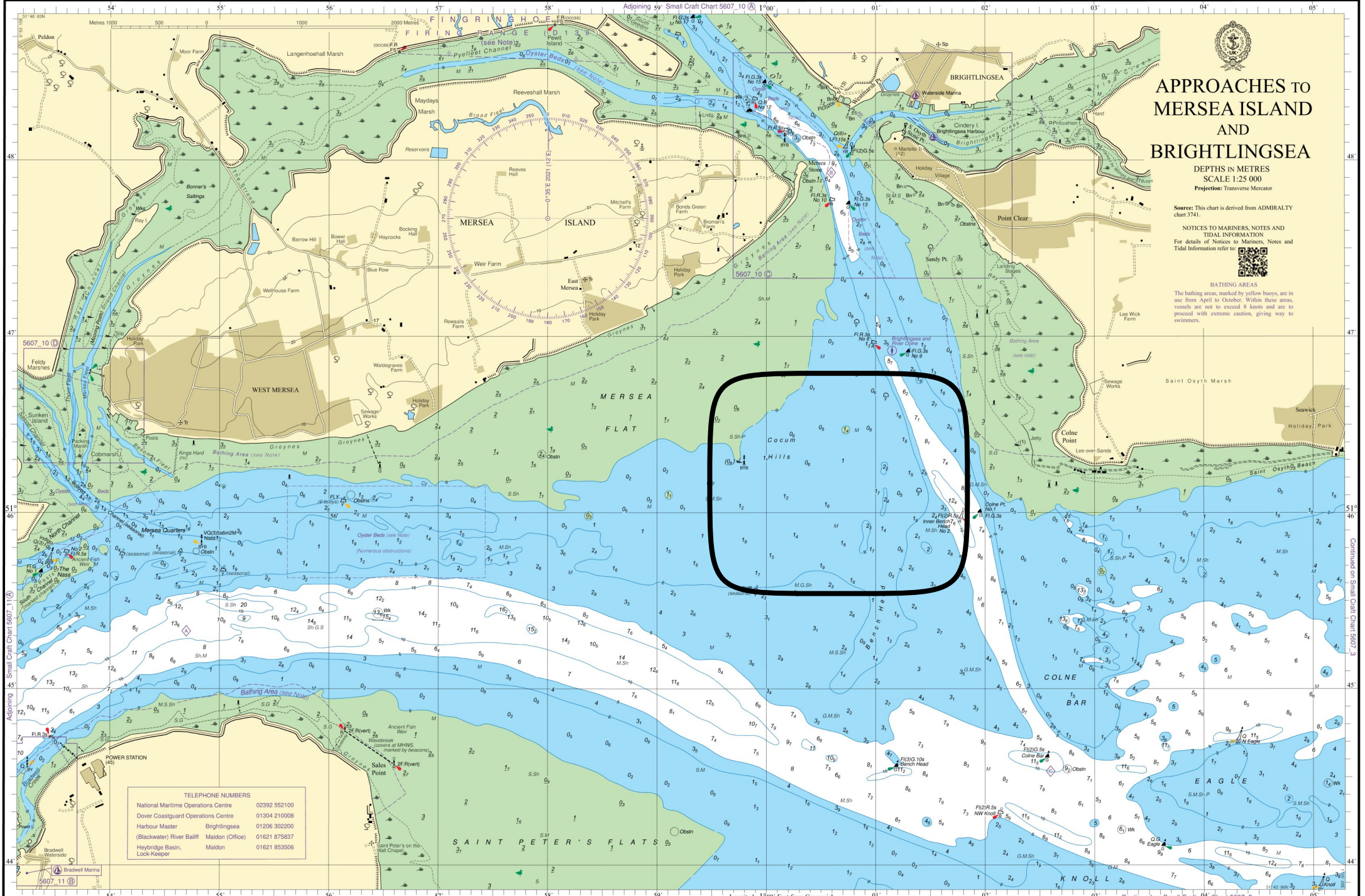


© Crown Copyright 2021. All rights reserved. This document is protected by international copyright law. It is derived from Crown Copyright information and from copyright information published by other organisations. No part of this document may be reproduced, stored in a retrieval system or transmitted in any form or by any means electronic, mechanical, photocopying, recording or otherwise without the prior written permission of the UK Hydrographic Office (gov.uk/who).

IMPORTANT - SEE RELATED ADMIRALTY PUBLICATIONS
Notices to Mariners (Annual, Permanent, Preliminary and Temporary) NP2011 (Symbols and Abbreviations) The Mariner's Handbook (especially Chapters 1 & 2 on the use, accuracy and limitations of charts), Sailing Directions (Pilots), List of Lights & Fog Signals, List of Radio Signals, Tide Tables (or their digital equivalents).
KEEP CHARTS AND PUBLICATIONS UP-TO-DATE AND USE THE LARGEST SCALE CHART APPROPRIATE



**APPROACHES TO
MERSEA ISLAND
AND
BRIGHTLINGSEA**
DEPTHS IN METRES
SCALE 1:25 000
Projection: Transverse Mercator

Source: This chart is derived from ADMIRALTY chart 3741.

NOTICES TO MARINERS, NOTES AND TIDAL INFORMATION
For details of Notices to Mariners, Notes and Tidal Information refer to

BATHING AREAS
The bathing areas, marked by yellow buoys, are in use from April to October. Within these areas, vessels are not to exceed 8 knots and are to proceed with extreme caution, giving way to swimmers.

TELEPHONE NUMBERS	
National Maritime Operations Centre	02392 552100
Dover Coastguard Operations Centre	01304 210008
Harbour Master Brightlingsea	01206 302200
(Blackwater) River Baliff Maldon (Office)	01621 875837
Heybridge Basin, Lock-keeper	01621 853506

Customer Information
Edition Number: 1
Edition Date: 18th Nov 2021

ADMIRALTY Notices to Mariners updated to 3421/22

Published by the UK Hydrographic Office, Admiralty Way, Taunton, United Kingdom TA8 8NB, November 2021.
T. +44 (0)1823 484444 Find out more about us at admiralty.co.uk

WGS84



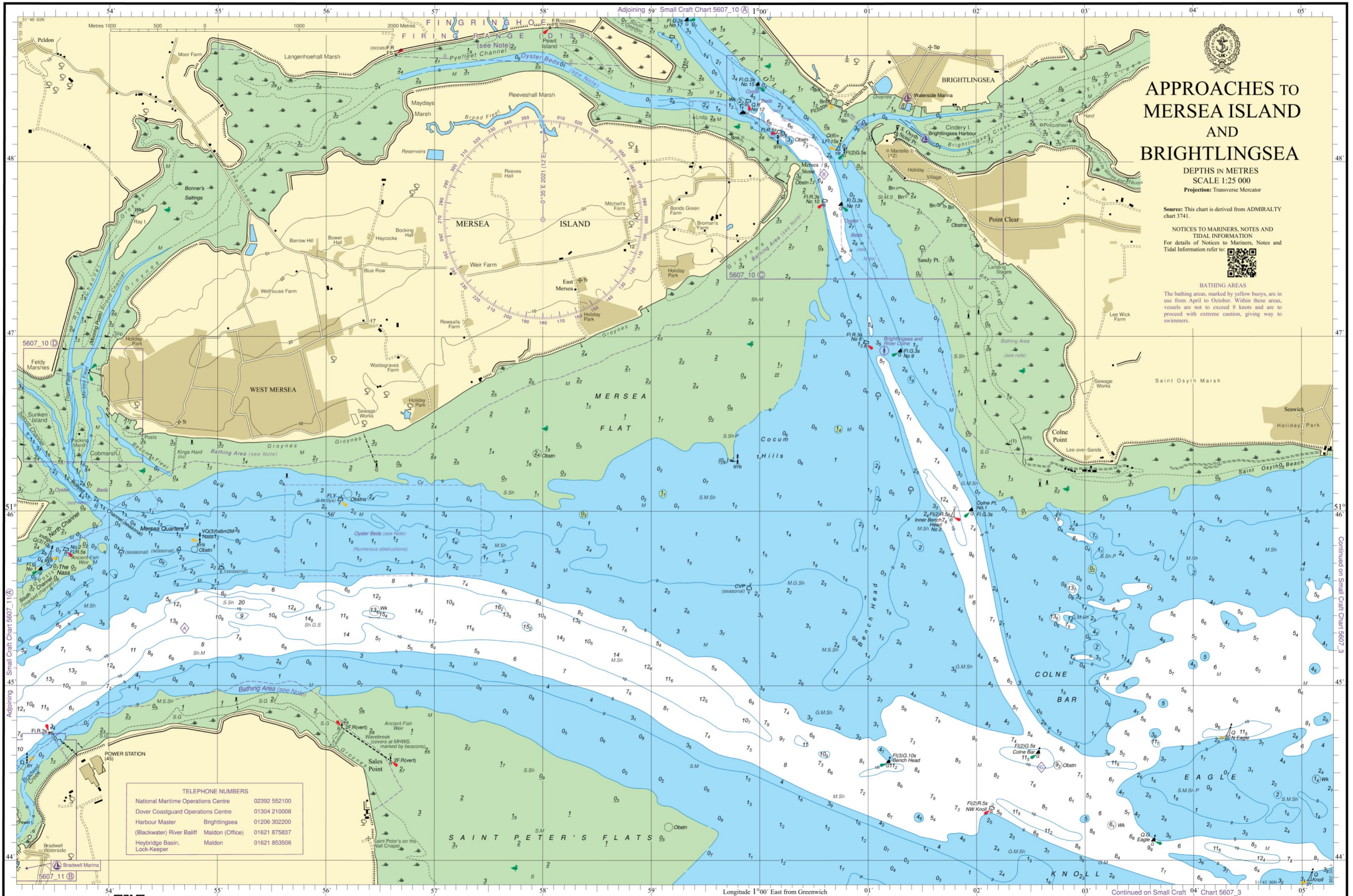
5607_9

Continued on Small Chart 5607_3

Continued on Small Chart 5607_3

© Crown Copyright. All rights reserved. This document is protected by international copyright law. It is derived from Crown Copyright information and from copyright information published by other organisations. No part of this document may be reproduced, stored in a retrieval system or transmitted in any form or by any means, electronic, mechanical, photocopying, recording or otherwise without the prior written permission of the UK Hydrographic Office (gov.uk/who).

IMPORTANT - SEE RELATED ADIRALTY PUBLICATIONS
Notices to Mariners (Annual, Permanent, Preliminary and Temporary) NPD11 (Symbols and Abbreviations)
The Mariner's Handbook (especially Chapters 1 & 2 on the use, accuracy and limitations of charts)
Sailing Directions (Pilots)
List of Lights & Fog Signals; List of Radio Signals; Tide Tables (or their digital equivalents)
KEEP CHARTS AND PUBLICATIONS UP-TO-DATE AND USE THE LARGEST SCALE CHART APPROPRIATE



APPROACHES TO MERSEA ISLAND AND BRIGHTLINGSEA

DEPTHS IN METRES
SCALE 1:25 000
Projection: Transverse Mercator

Source: This chart is derived from ADMIRALTY chart 3741.

NOTICES TO MARINERS, NOTES AND TIDAL INFORMATION
For details of Notices to Mariners, Notes and Tidal Information refer to

BATHING AREAS

The bathing areas, marked by yellow buoys, are in use from April to October. Within these areas, vessels are not to exceed 8 knots and are to proceed with extreme caution, giving way to swimmers.

TELEPHONE NUMBERS	
National Maritime Operations Centre	02392 552100
Dover Coastguard Operations Centre	01304 210008
Harbour Master Brightlingsea	01206 302200
(Blackwater) River Baliff Maldon (Office)	01621 875837
Heybridge Basin, Lock-keeper	01621 853506

Customer Information
Edition Number: 1
Edition Date: 18th Nov 2021

ADMIRALTY Notices to Mariners updated to 3421/22

Published by the UK Hydrographic Office, Admiralty Way, Taunton, United Kingdom TA8 8NU, November 2021.
T. +44 (0)1823 484444 Find out more about us at admiralty.co.uk

WGS84

ADMIRALTY
PAPER CHART SERVICE

5607_9

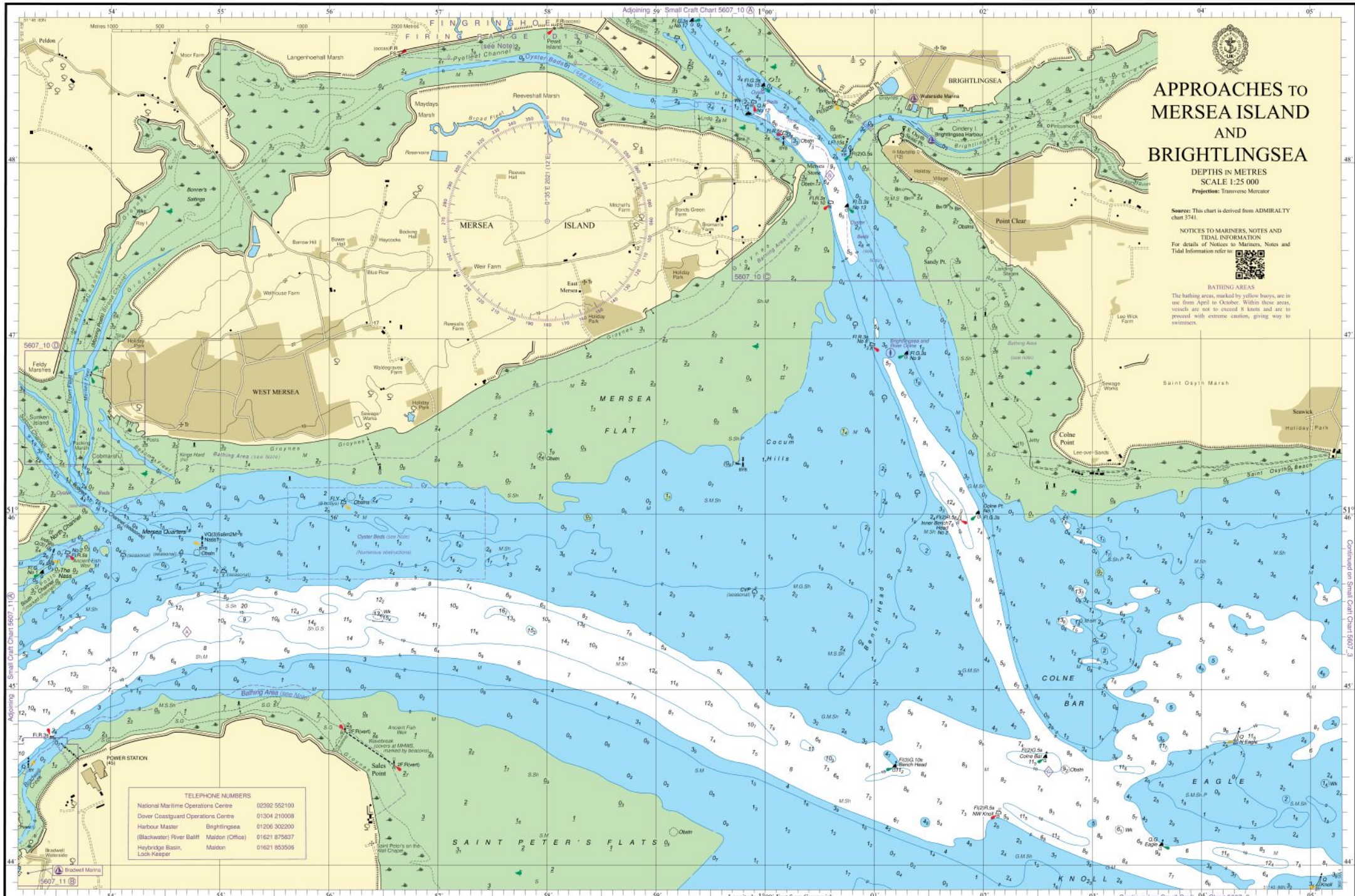
Continued on Small Craft Chart 5607_3

Continued on Small Craft Chart 5607_3

Longitude 1°00' East from Greenwich

© Crown Copyright 2021. All rights reserved. This document is protected by international copyright law. It is derived from Crown Copyright information and from copyright information published by other organisations. No part of this document may be reproduced, stored in a retrieval system or transmitted in any form or by any means, electronic, mechanical, photocopying, recording or otherwise without the prior written permission of the UK Hydrographic Office (www.ukho.gov.uk).

IMPORTANT - SEE RELATED ADMIRALTY PUBLICATIONS
Notices to Mariners (Annual, Permanent, Preliminary and Temporary), NPS011 (Symbols and Abbreviations), The Mariner's Handbook (especially Chapters 1 & 2 on the use, accuracy and limitations of charts), Sailing Directions (Pilot), List of Lights & Fog Signals, List of Radio Signals, Tide Tables (or their digital equivalents).
KEEP CHARTS AND PUBLICATIONS UP-TO-DATE AND USE THE LARGEST SCALE CHART APPROPRIATE



APPROACHES TO MERSEA ISLAND AND BRIGHTLINGSEA

DEPTHS IN METRES
SCALE 1:25 000
Projection: Transverse Mercator

Source: This chart is derived from ADMIRALTY chart 5741.

NOTICES TO MARINERS, NOTES AND TIDAL INFORMATION

For details of Notices to Mariners, Notes and Tidal Information refer to

BATHING AREAS

The bathing area, marked by yellow buoy, are in use from April to October. Within these areas, vessels are not to exceed 8 knots and are to proceed with extreme caution, giving way to swimmers.

TELEPHONE NUMBERS	
National Maritime Operations Centre	02392 552100
Dover Coastguard Operations Centre	01304 210008
Harbour Master Brightlingsea	01206 302200
(Blackwater) River Balfray Maldon (Office)	01621 875837
Heybridge Basin, Lock Keeper	01621 853596

6 2096

WGS84

APPROACHES TO MERSEA ISLAND AND BRIGHTLINGSEA



WGS84

ADMIRALTY

5607_9



