



PLATU 25 CLASS
GPGS
17 – 19 /3 2023
ATHENS, GREECE
SAILING INSTRUCTIONS (SIs)

The notation '[NP]' in a rule of the sailing instructions (SIs) means that a boat may not protest another boat for breaking that rule. This changes RRS 60.1(a).

The notation '[SP]' in a rule of the sailing instructions (SIs) denotes a rule for which a standard penalty may be applied by the race committee without a hearing.

1 RULES

- 1.1 The event will be governed by the rules as defined in the Racing Rules of Sailing (RRS) 2021-2024.
 - 1.1.1 The class rules.
 - 1.1.2 RRS Appendix P, Special Procedures for Rule 42, will apply.
- 1.2 In all rules governing this event:
Both 'athlete' and 'competitor' mean a person competing or intending to compete in the event.
- 1.3 [SP] denotes a rule for which a standard penalty may be applied by the race committee or the without a hearing or a discretionary penalty applied by the protest committee with a hearing. This changes RRS 63.1 και A5
- 1.4 If there is a conflict between languages, the English text will take precedence.

2 CHANGES TO SAILING INSTRUCTIONS

- 2.1 Any change to the sailing instructions will be posted before 0900 on the day it will take effect, except that any change to the schedule of races will be posted by 2000 on the day before it will take effect.

3 COMMUNICATIONS WITH COMPETITORS

- 3.1 Notices to competitors will be posted on the official notice board located at:
<https://www.racingrulesofsailing.org/documents/5299/event>
- 3.2 The race office is located at: No78



- 3.3 On the water, the race committee intends to monitor and communicate with competitors on VHF radio channel VHF 72
- 3.4 [DP] While racing, except in an emergency, a boat shall not make voice or data transmissions and shall not receive voice or data communication that is not available to all boats

4 SIGNALS MADE ASHORE

- 4.1 Signals ashore will be displayed on the flagpole located near to the boat park in venue.
- 4.2 When flag AP is displayed ashore, '1 minute' is replaced with 'not less than <30> minutes' in Race Signals AP.

5 SCHEDULE OF RACES

5.1

<i>Date</i>	<i>Schedule</i>	<i>Time</i>
17/3/ 2023	fleet Series Skipper's Meeting Possible warning signal for the practice race	10:30 13:00
18/3/23	fleet Series	TBA
19/3/23	fleet Series Prize Giving	TBA

- 5.2 No more than four (4) races will be sailed in any scheduled day .
- 5.3 To alert boats that a race or sequence of races will begin soon, the orange starting line flag will be displayed with one sound at least five minutes before a warning signal is made.
- 5.4 On the last scheduled day of racing no warning signal will be made after 16:00.

6 RACING AREA

- 6.1 SI Addendum <A.> shows the location of the racing area(s).

7 COURSES

- 7.1 The diagram in SI Addendum show the course, including the approximate angles between legs, the order in which marks are to be passed, and the side on which each mark is to be left.
- 7.2 No later than the warning signal, the race committee signal vessel will display the approximate compass bearing of the first leg.



8 MARKS

8.1 Mark(s) are

Event	Marks	New Marks
Platu25	Yellow	Orange

8.2 The following marks are rounding marks: <See Addendum B>.

9. FORMAT OF RACING

9.1 The courses will be Windward/Leeward,the format consists of a single series (9 races).

10. THE START

10.1 The starting line will be between staffs displaying orange flags on the starting marks.

10.2 Boats whose warning signal has not been made shall avoid the starting area during the starting sequence for other races.

10.3 A boat that does not start within <5> minutes after her starting signal will be scored Did Not Start without a hearing. This changes RRS A5.1 and A5.2.

11. CHANGE OF THE NEXT LEG OF THE COURSE

11.1 To change the next leg of the course, the race committee will lay a new mark (or move the finishing line) and remove the original mark as soon as practicable. When in a subsequent change a new mark is replaced, it will be replaced by an original mark.

12. THE FINISH

12.1 The finishing line is between staffs displaying blue flags on the finishing marks.

13. PENALTY SYSTEM

13.1 RRS 44.1 is changed so that the Two-Turns Penalty is replaced by the One-Turn Penalty.

13.2 An National jury will be appointed

14. TIME LIMITS [AND TARGET TIMES]

14.1 The Mark 1 Time Limit, Race Time Limit (see RRS 35), and the Finishing Window are shown in the table below.

Event	Target Time	Race Time Limit	Finishing Window
Platu25	60	90	20

14.3 Boats failing to finish within the Finishing Window will be scored DNF without a hearing. This changes RRS 35, A5.1, A5.2.

15. HEARING REQUESTS

15.1 The protest time limit is <60> minutes after the last boat in that class finishes the last race of the day or the race committee signals no more racing today, whichever is later. The time will be posted on the official notice board.

15.2 Hearing request forms are available from the race office on each venue or on-line at

<https://www.racingrulesofsailing.org/documents/5299/event>



15.3 Notices will be posted no later than 30 minutes after the protest time limit to inform competitors of hearings in which they are parties or named as witnesses. Hearings will be held in the protest room, located at No78 beginning at the time posted on the official notice board.

15.4 A list of boats that have been penalized for breaking RRS 42 under Appendix P will be posted.

15.5 Decisions of the National Jury will be final as provided in RRS 70.5. If Appendix N1.4(b) applies, the time limit for request for a full panel hearing by a full National Jury is 15 minutes after the parties have been informed of the decision.

16. SCORING

16.1 If less than 4 races have been completed, a boat’s series score will be the total of her race scores. When 4 or more races have been completed, a boat’s series score will be the total of her race scores excluding her worst score.

16.3 The event is valid if at least two (2) races are completed.

17. SAFETY REGULATIONS

17.1 [DP] A boat that retires from a race shall notify the race committee at the first reasonable opportunity. Promptly after returning to shore, the boat shall complete a retirement declaration form, which is available either at the race office of each venue or online at: <https://www.racingrulesofsailing.org/documents/5299/event>

18. REPLACEMENT OF CREW OR EQUIPMENT

18.1 [DP] Substitution of competitors is not allowed without prior written approval of the race committee.

18.2 [DP] Substitution of damaged or lost equipment is not allowed unless authorized in writing by the race committee. Requests for substitution shall be made to the committee at the first reasonable opportunity, which may be after the race.

18.3 Requests forms will be available either at the race office or online at: <https://www.racingrulesofsailing.org/documents/5299/event>

19. OFFICIAL VESSELS

19.1 Official vessels will be identified as follows:

Official Vessel	Flag Identification
Race Committee	White flag with ‘RC’
Protest Committee	White flag with ‘JURY’, ‘J’ or ‘IJ’
Media	Any flag with ‘PRESS’, ‘MEDIA’ or ‘TV’
Safety	Any flag with ‘RESCUE’

20. PRIZES

20.1 Prizes will be awarded to the best three (3) boats.



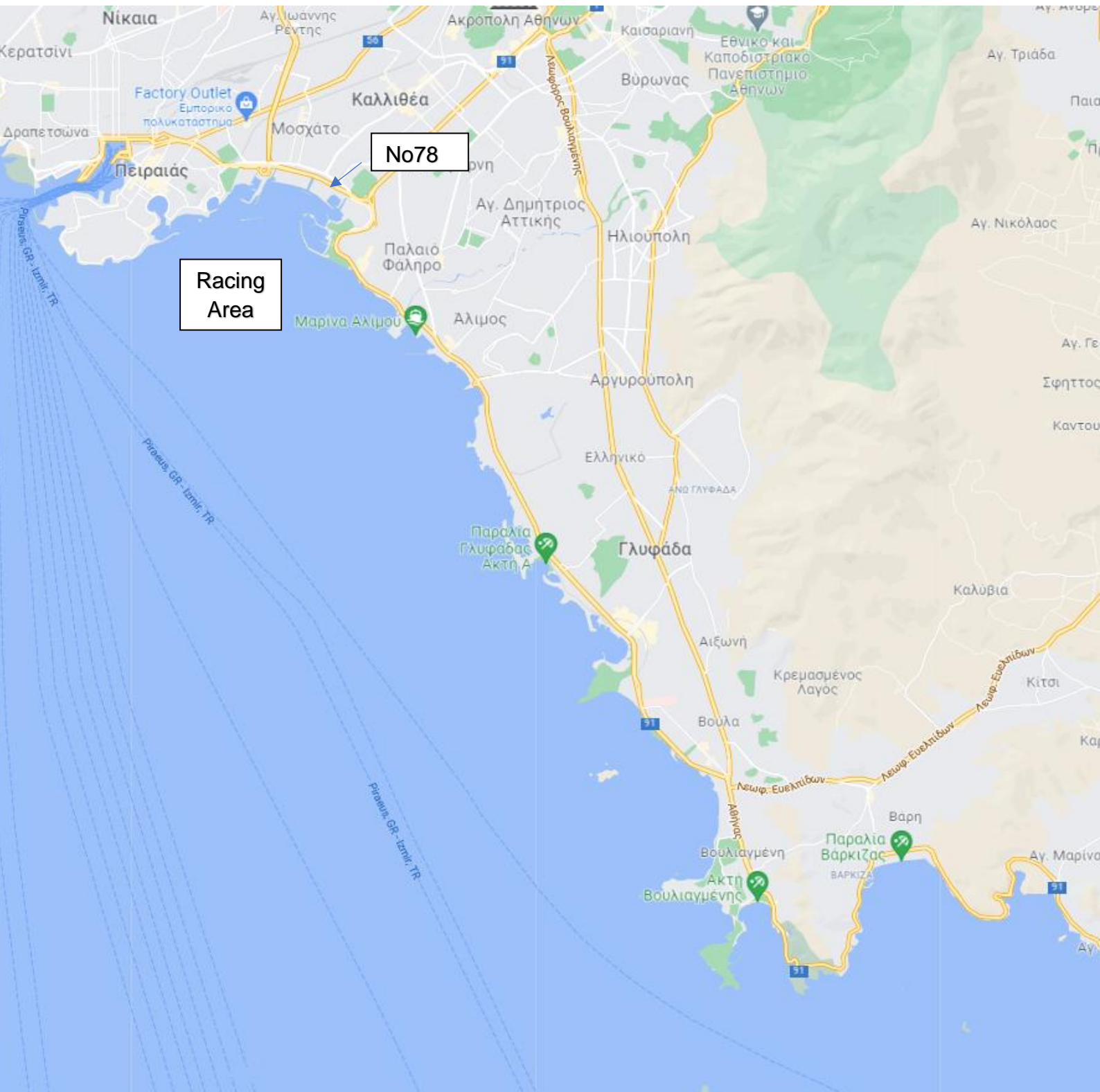
21. RISK STATEMENT

- 21.1 RRS 3 states: 'The responsibility for a boat's decision to participate in a race or to continue to race is hers alone.' By participating in this event each competitor agrees and acknowledges that sailing is a potentially dangerous activity with inherent risks. These risks include strong winds and rough seas, sudden changes in weather, failure of equipment, boat handling errors, poor seamanship by other boats, loss of balance on an unstable platform and fatigue resulting in increased risk of injury. **Inherent in the sport of sailing is the risk of permanent, catastrophic injury or death by drowning, trauma, hypothermia or other causes.**

22. INSURANCE

- 22.1 Each boat at the event shall be insured with a valid third-party liability insurance with a minimum cover of 2.100.000 EUR (or the equivalent) per incident and valid for the event.
- 22.2 A copy of the insurance coverage must be delivered with the registration.
- 22.3 The organizing authority is not responsible for verifying the status or validity of those insurance certificates.

SI ADDENDUM A
COURSE AREAS





SI Addendum B

COURSE: WINDWARD/LEEWARD

Signal. Mark Rounding Order

L2. Start – 1 – 2 – 1 – Finish

L3. Start – 1 – 2 – 1 – Finish

