



THE CARNIVAL RACE 1th National 470 REGATTA

Marina degli Aregai, 16/19 February 2023



YACHT CLUB SANREMO



SAILING INSTRUCTIONS

Notations:

The notation '[NP]' in a *rule* means that a breach of the *rule* may not be subject of a protest by a boat This changes RRS 60.1(a).

The notation '[DP]' in a *rule* means that the penalty for a breach of the *rule* may, at the discretion of the protest committee, be less than disqualification.

The notation '[SP]' in a *rule* means that the penalty for a breach of the *rule* may a standard penalty may be applied by the Race Committee without a hearing This changes RRS 63.1 and A5

1. RULES

SEE NOTICE OF RACE

2. NOTICES TO COMPETITORS

Official Notice Board (ONB), communication to competitors and from competitors to the OA, CR and Jury, shall be done only as an Online Official Notice Board, available at the following link <https://www.racingrulesofsailing.org/documents/4714/event> or QR code:



FOR FULL EFFICIENCY OF THE DESCRIBED SYSTEM, IT IS COMPULSORY THAT ALL CREWS (HELMSMAN AND BOWMAN) WILL INFORM OA BY THE ENTRY FORM THE OWN EMAIL ADDRESS AND WHATAPP PHONE NUMBER.

Each crew is responsible to adjust yourself to such system.

3. CHANGES TO SAILING INSTRUCTIONS

3.1 Any change to the sailing instructions will be posted at least two hours before the first scheduled warning signal for the race of the day it will take effect, except that any change to the schedule of races will be posted before 8.00 p.m on the day before it will take effect.

4. SIGNALS MADE ASHORE

4.1 Signals made ashore will be displayed at the signal mast located in front of the Race Office.

4.2 When flag AP is displayed ashore '1 minute' is replaced with 'not less than 30 minutes'. This changes Race Signals.

4.3 When Flag D is displayed ashore with one sound, the Warning Signal will be displayed no less than 30 minutes after the Flag D is displayed or not before the scheduled time, whichever is later. [NP] [DP] [SP] Boats shall not leave the shore until this signal is displayed.

5. SCHEDULE

5.1 **[NP] [DP]** Registration will take place between 09:00 a.m. and 06:00 p.m Wednesday 15th, and Thursday 16st between 09:00 a.m. to 10.30 a.m.

5.2 SCHEDULE OF RACES:

SEE NOR POINT 9

5.3 FLEETS ARE AS FOLLOWS SCHEDULE

CLASS	Qualification Series	Final Series	Total number of races	Maximum races per day
SINGLE FLEET	--	--	11	2 RACE first day 3 other days
SPLIT FLEET	Thursday and Friday	Max 6 race	11	2 RACE first day 3 other days

5.4 Number of races:

Possibly 11 races in total are expected.

5.5 The warning signal for each succeeding race will be made as soon as possible.

5.6 To alert boats that a race or sequence of races will begin soon, the orange starting line flag will be displayed with one sound at least five minutes before the warning signal.

5.7 No warning signal will be given after **03.00** p.m. on the last day.

6. REGATTA FORMAT

6.1 The format of racing is as follows:

6.2 For 470 class the event is sailed as a single fleet than the Carnival Race will be scheduled as 11 single races.

6.3 For 420 Women the event is sailed as a single fleet than the Carnival Race will be scheduled as 11 single races.

6.4 For 420 Open until 80 boats the event is sailed as a single fleet. If more of 80 boats, the O.A. can decide to split the fleets in 2 groups, for qualifying series as follow:

6.4.1 QUALIFYING SERIES

(a) Boats will be assigned to fleets: YELLOW AND RED of equal size and ability as possible. Initial assignments will be made by the O.A. Those assignments will be posted in the on line Official Notice Board by 11.00 a.m. on 16th February

(b) The qualifying series are scheduled for Thursday and Friday. Boats will be re-assigned to fleets after first day of racing. If all fleets have completed the same number of races, boats will be re-assigned on the basis of their rank in the series. If all fleets have not completed the same number of races the series scores for re-assignment will be calculated for those races, numbered in order of completion, completed by all fleets. The fleet with fewer races will continue racing the following day until all fleets have completed the same number of races. All boats will thereafter race in the new fleets

(c) Assignments will be based on the scores available at 09:00 pm that day regardless of protests or requests for redress not yet decided.

(d) For two fleets and similarly for any other number, re-assignments will be made as follows:

RANK IN SERIES	FLEET ASSIGNMENT
FIRST	YELLOW
SECOND	RED
THIRD	RED
FOURTH	YELLOW
FIFTH	YELLOW
SIXTH	RED
AND SO ON...	

6.4.2 FINAL SERIES

(a) Boats will be assigned to Final Series fleets Gold, Silver on the basis of their ranks in the Qualifying Series. The Final Series fleets will have, as nearly as possible, equal size but none larger than the Gold fleet. Boats with the best Qualifying Series rank will race all Final Series

races in the Gold fleet. Boats with the next-best Qualifying Series ranks will race in the Silver fleet.

- (b) Any recalculation of Qualifying Series rankings after boats have been assigned to Final Series fleets will not affect the assignments except that a redress decision may promote a boat to a higher fleet.

- (c) If Thursday and Friday there will be no qualifying series, Saturday and Sunday will race without the division of the fleets in gold and silver fleets.

7. CLASS FLAG

470 SINGLE FLEET	WARNING SIGNAL CLASS FLAG
420 OPEN SINGLE FLEET	WARNING SIGNAL CLASS FLAG
420 OPEN DIVIDED INTO 2 FLEETS	WARNING SIGNAL FLAGS RED AND YELLOW
420 WOMEN SINGLE FLEET	WARNING SIGNAL PINK FLAG

8. THE RACING AREAS

Attachement A shows the location of racing area, which will be the same for all classes.(470 &420)

9. THE COURSES

- 9.1 The diagram in Attachment B, shows the course, the course designation, the approximate angle between legs, the order in which marks are to be passed, and the prescribed side for each mark.
- 9.2 No later than the warning signal, the Race Committee will display the course designation (**PENNANT 1 INNER COURSE PENNANT 2 OUTER COURSE**). The Race Committee may also display the approximate compass bearing of the first mark.
- 9.3 At a gate, boats shall sail between the gate marks from the direction of the previous mark and round either gate mark.
- 9.4 If instead of the gates 3s/3p and 4s/4p will be placed only one mark, this one will have to be rounded at port.

10. MARKS

- 10.1 Marks 1, 2 and 3s/3p and 4s/4p will be Orange GPS pyramidal mark inflatable.
- 10.2 The finishing mark is Orange GPS pyramidal mark inflatable.

11. THE START

- 11.1 Rule 26 is amended as follows: the preparatory signal may only be the Uniform or the black flag. The warning signal as per above point 7.
- 11.2 The starting line will be between a staff displaying an orange flag on the Principal Race Committee Vessel at starboard end and a staff displaying an orange flag on the Race Committee Vessel at the port end.
[DP] [NP] [SP] Boats whose warning signal has not been made shall avoid the starting area.
 The starting area is defined as 100 meters from the starting line and its extensions in all directions.
[NP] A boat starting later than 4 minutes after her starting signal will be scored DNS. This changes RRS A4 and A5.
[NP] The Race Committee Vessel on the starting line may maintain their position by using their engine(s) and failure to keep clear of these boats shall not be grounds for redress under rule 62.1(a).

12. CHANGE OF THE NEXT LEG OF THE COURSE

- 12.1 Course will not be change. THIS CHANGES RRS 33

13. THE FINISH

- 13.1 The finishing line for both racing area will be between a staff with an **blue** flag displayed on the Arrival Race Committee Vessel and a yellow mark.

14 [NP] TIME LIMITS AND TARGET TIMES

- 14.1 Time limits are follows:

CLASS	Time Limit	Mark 1 Time Limit	Finish Window	Race Target Time
470	70	25	15	45
420	70	25	15	45

- 14.2 If no boat has passed Mark 1 within the Mark 1 time limit, the race shall be abandoned.
- 14.3 Boats failing to finish within the time stated in the Finish Window after the first boat sails the course and finishes will be scored Did Not Finish (DNF) without a hearing. This changes RRS 35, RRS A4 and RRS A5.
- 14.2 Failure to meet the target time will not be grounds for redress. This changes RRS 62.1(a).

15 PENALTY SYSTEM

[DP] [NP] [SP] A boat that has taken a penalty under rule 44, or has retired, shall complete on line the acknowledgement form available as per point. 2. within the protest time limit. This requirement does not apply to boats penalized according to appendix P.

16 PROTESTS AND REQUESTS FOR REDRESS

- 16.1 **[NP]** Protests shall be delivered within the protest time limit.
- 16.2. The protest will be posted by the dedicated pages <https://www.racingrulesofsailing.org/documents/4714/event> See SI 2.1.
- 16.3 The protest time limit is 60 minutes after the last boat has finished in the last race of the day, or after the displaying of a signal showing the abandon of the races of the day, what is the later. This time will be posted on the official notice board on line. The same protest time applies to all protests by the race committee and the jury and to requests for redress. This changes Rule 61.3 and 62.2
- 16.4 Notices will be posted on line possibly within 30 minutes of the protest time limit to inform competitors of hearings in which they are parties. Hearings will be held in the jury room, located nearby to the race office.
- 16.5 Notice of protests by the race committee or jury will be posted to inform boats under rule 61.1(b). By the display of such notice, competitors shall be considered adequately informed of a protest by the race committee or the jury.
- 16.6 For the purposes of rule 64.3(b) the "authority responsible" is the Measurer or Equipment Inspector appointed by the organising authority.
- 16.7 **[DP]** Breaches of Class Rules may be less than disqualification.
- 16.8 A list of boats that have been penalized under Appendix P for breaking RRS 42 will be posted on line

17 SCORING

- 17.1 One race is required to be completed to constitute a series.
- 17.2 Discards:
When from 1 to 4 races have been completed, a boat's series score will be the total of her race scores.
When from 5 to 11 valid races have been completed, a boats series score will be the total of her races scores excluding her worst score.
- 17.3 **SPLIT FLEET EVENT:**
- 17.3.1 The scores of all races from the Qualifying Series will be carried forward to the Regatta Series.
- 17.3.2 For the Qualifying Series, RRS A4 is changed so that those scores are based on the number of boats assigned to the largest fleet
- 17.3.3 Final Series, fleets will be scored separately and different final series fleets need not have completed the same number of final races. RRS A4 is changed so that those scores are based on the number of boats assigned to the given fleet.
- 17.3.4 For final rankings, boats assigned to the Gold fleet will be ranked higher in the regatta than the boats assigned to the Silver fleet, and so on.
- 17.4 Prizes will be given as stated in the Notice of Race.

18 AVAILABLE

19 REPLACEMENT OF CREW OR EQUIPMENT

- 19.1 Substitution of competitors will not be allowed without prior on line approval of the Race Committee.
- 19.2 Substitution of damaged or lost equipment will not be allowed unless approved by the Race Committee. Requests for substitution shall be made to the Race Committee at the first reasonable opportunity.

20 EQUIPMENT AND MEASUREMENT CHECKS

- 20.1 A boat or equipment may be inspected at any time for compliance with the class rules and sailing instructions. On the water, a boat can be instructed by a race committee measurer to proceed immediately to a designated area for inspection.

21. SAFETY REGULATION

- 21.1 [SP] Boats not leaving the harbor for a scheduled race shall promptly notify the Race Office.
- 21.2 [SP] A competitor that retires from racing shall notify the Race Committee before leaving the racing area, if possible, and shall complete a retirement declaration form at the Race Office as soon as possible after returning ashore but before the time limit for protests. Use the appropriate form (the Penalty Report form with the fleet indication to which you belong) at the following link:
<https://www.racingrulesofsailing.org/documents/4714/event>

22 [NP][DP]SUPPORT BOATS

- 22.1 Support, including coach, press private and spectator boats shall register at the Race Office during the registration period (SI 5.1) and be issued with an identity flag, such flag to be displayed at all times when afloat. The OA will supply also a identifying adhesive to be exposed in to boat for all time during the event, in sea and in harbour.
- 22.2 Subject to SI 21.6, team leaders, coaches and other support boats shall stay more than 100 metres outside the restricted area and from any racing boat from the time of the preparatory signal until all boats have finished or the Race Committee signals a postponement, general recall or abandonment.
- 22.3 Support boats shall not interfere with any competitor.
- 22.4 Support boats shall not pass any information by any means whatsoever to competitors who are racing, RRS 41.
- 22.5 Communication by radio (including mobile phones) is prohibited between competitors and any support boats. Support boats shall not communicate with or transfer goods or equipment to or from, their competing boats from the time of the preparatory signal until all boats have finished or the Race Committee signals a postponement, general recall or abandonment.
- 22.6 At all times, support boats shall comply with the directions given by the Race Committee. In particular this includes assisting with rescues when requested to do so.
- 22.7 Support boats must be on standby on **VHF Channel 72** at all times. **The same channel will be used for the RRS 37 SEARCH AND RESCUE INSTRUCTIONS.**
- 22.8 Life jackets is recommended that they are worn at all times when afloat and **shall be worn in winds of over 10 knots**
- 22.9 Kill cords shall be worn at all times when the engine is running.
- 22.10 According to RRS 60.3 (d) a Protest Committee may call a hearing to consider whether a *support person* – has broken a *rule*, including any of these SI. According to RRS 64.4 (b) the Protest Committee may penalize a competitor for the breach of a *rule* by a *support person*.

23 [NP][DP]VHF RADIOS

Except in an emergency, a boat shall neither make nor receive radio transmissions while racing except those available to all boats. This restriction also applies to mobile telephones.

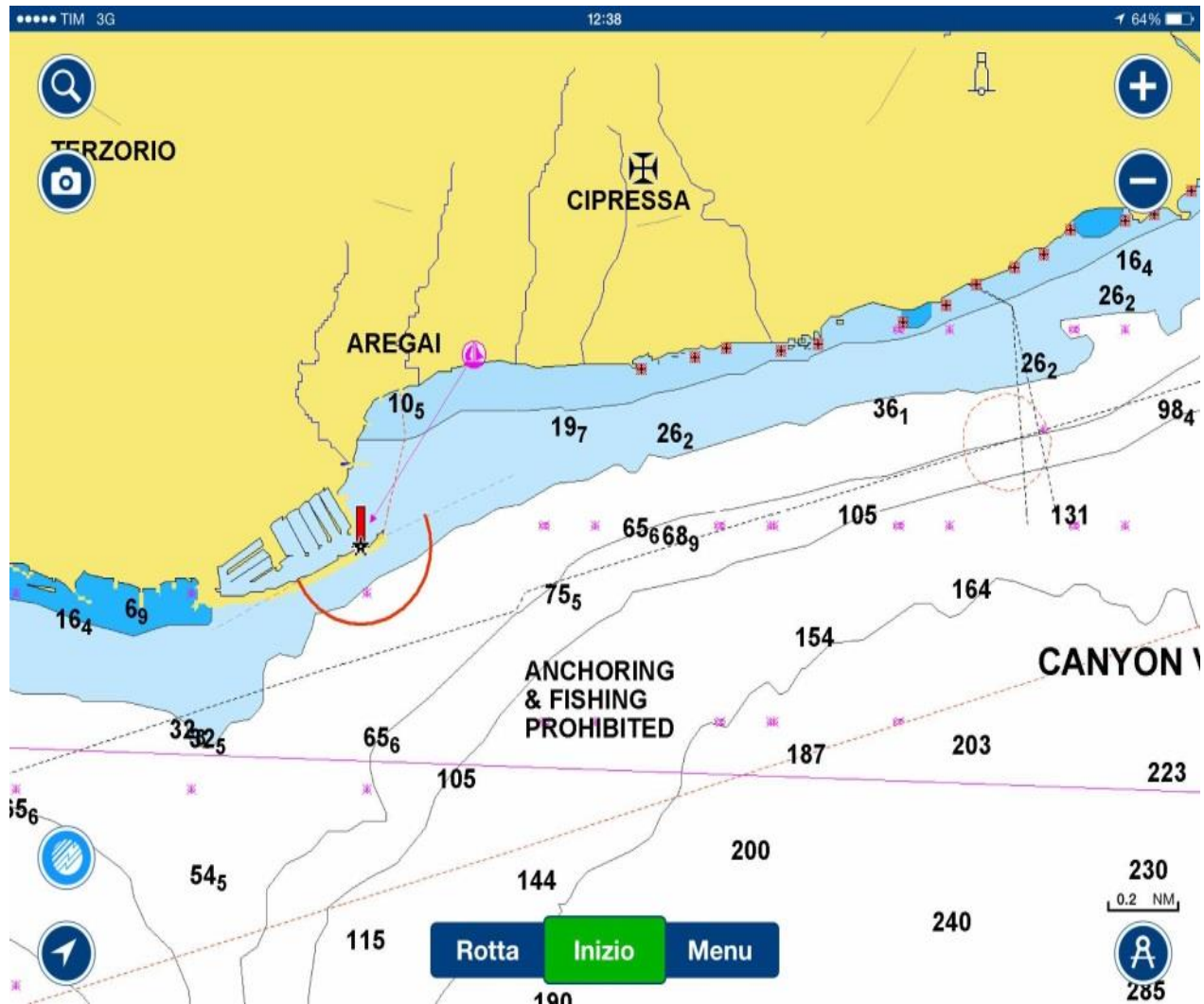
24 [NP][DP] OFFICIAL BOATS

OFFICIAL BOAT	FLAG
RACE COMMITTEE 420 OPEN/WOMEN AND 470	YACHT CLUB SANREMO BURGEE
JURY BOATS (JURY)	YELLOW FLAG WITH J
MEASURER BOAT	BLUE FLAG WITH M
PRESS BOATS	WHITE FLAG WITH P
SUPPORT BOATS	RED FLAG given by OA see 22.1

25 [NP][DP]ADVERTISING, BOW NUMBER.

- 25.1 In accordance with Regulation 20.4.1 boats shall display sponsor advertising stickers supplied by the organizing authority.
- 25.2 Boats shall display bow numbers. The Organizing Authority will supply the numbers while the instructions for their use are described in **ATTACHMENT C**.
- 25.3 If the bow number is lost or damaged, the numbers must be replaced and are available from the Race Office

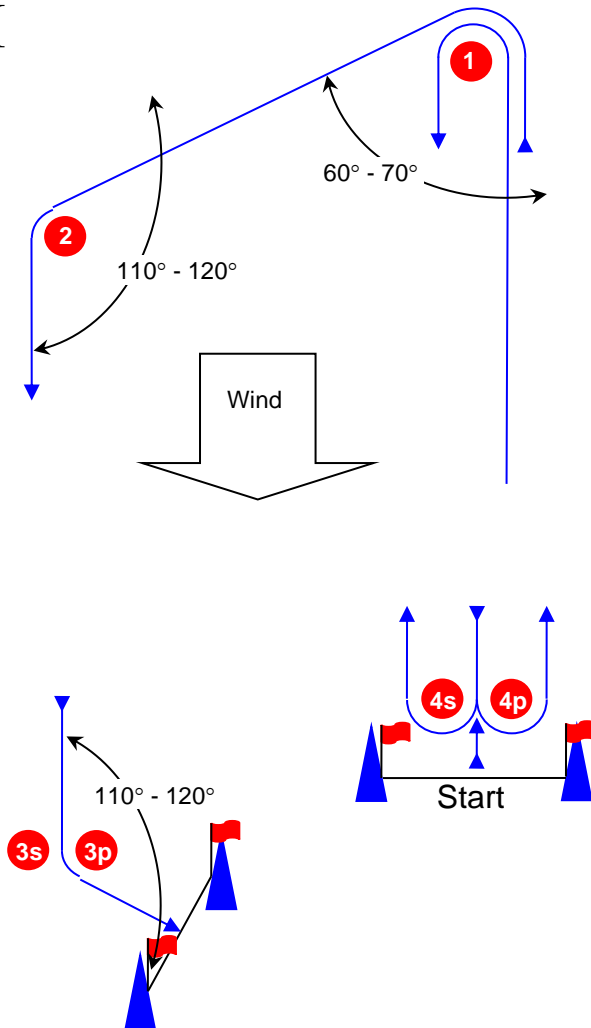
ATTACHMENT “A” RACING AREA



ATTACHMENT “B”

Course Illustrations – Trapezoid separate finishing line Boats at both ends of the starting line and finishing lines

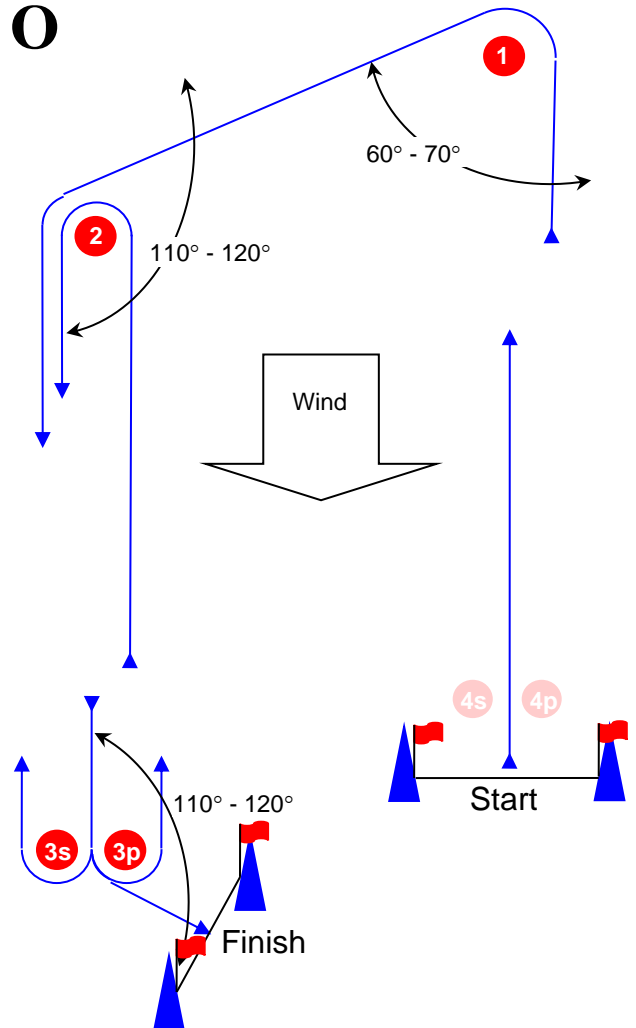
I



Course: Inner Trapezoid

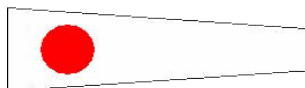
Signal **I2** Mark Rounding Order
Start – 1 – 4s/4p – 1 – 2 – 3p – Finish

O



Course: Outer Trapezoid

Signal **O2** Mark Rounding Order
Start – 1 – 2 – 3s/3p – 2 – 3p – Finish



ATTACHMENT “C”

BOW NUMBERS

the bow numbers shall be placed approximately parallel to the sheerline at following position:

