

ENOSHIMA

Olympic Week 2024



Enoshima Yacht Harbour, Fujisawa, Kanagawa, Japan
The Organizing Authority is Japan Sailing Federation (JSAF).



ASAF Sailing Cup JSAF Enoshima Olympic Week 2024

23rd-26th May 2024

Enoshima Yacht Harbor, Fujisawa, Kanagawa, Japan

The Organizing Authority is Japan Sailing Federation (JSAF).

NOTICE OF RACE

Organizing Authority (OA): Japan Sailing Federation (JSAF)

1. RULES

- 1.1. The regatta will be governed by the rules as defined in *The Racing Rules of Sailing* (RRS).
- 1.2. RRS Appendix P, Special Procedures for Rule 42, will apply.
- 1.3. International Jury will be appointed in accordance with rule 91(b). Its decisions will be final as provided in RRS 70.5.
- 1.4. In all rules governing this event:
 - 1.4.1. [SP] denotes a rule for which a standard penalty may be applied by the race committee without a hearing or a discretionary penalty applied by the International Jury with a hearing. This changes RRS 63.1 and A5.
 - 1.4.2. [NP] denotes a rule that shall not be grounds for protests by a boat. This changes RRS 60.1(a).
- 1.5. For the Skiff Two Person Dinghy Events, RRS 44.1 and RRS P2.1 are changed so that the Two-Turns Penalty is replaced by the One-Turn Penalty.
- 1.6. In RRS 44.2 insert after the first sentence: However, if Mark 1a is set, a boat may delay taking a penalty for an incident in the zone around Mark 1 or on the leg between Mark 1 and Mark 1a, as soon as possible after leaving the zone around Mark 1a.
- 1.7. For the race management of SNIPE class, the "Rules of Conduct for Conducting



National and International Championship Regattas" issued by the SCIRA shall be adopted. If there is a conflict with SI, the "Rules of Conduct for Conducting National and International Championship Regattas" will take precedence

- 1.8. If there is a conflict between languages, the English NoR will take precedence.
- 1.9. Displaying national flags on the sails is optional for this event.

2. SAILING INSTRUCTIONS (SIs)

Sailing Instructions will be available during registration at the event website. Other documents governing the event will be published with the Sailing Instructions.

3. COMMUNICATION

- 3.1. The Official Notice Board will be online only, available on the event website.
- 3.2. On the water, the race committee will make courtesy broadcasts to competitors on VHF radio. The channel will be stated in the SIs.

4. ELIGIBILITY AND ENTRY

- 4.1. Competitors must be registered member of a member national authority of World Sailing.
- 4.2. Competitors must be registered member of their national class association. If there is no class association in their country, it must be approved by a member national authority of World Sailing.
- 4.3. Competitors shall entry by completing the entry form on the event website <http://www.jeow.org/> and paying the required fees.
- 4.4. Support Person shall entry by completing the entry form on the event website <http://www.jeow.org/> (All member of support person boats needs entry).
- 4.5. The early entry fee (ref. NOR 5.1.) will apply if the entry has completed no later than 24:00, 4th April 2024 (Japan Time, GMT+9).
- 4.6. Entries sent after the deadline indicated above, but within 9th May 2024, will be accepted. After that the entry will be a late entry (ref. NOR 5.1.) and the entry will be accepted only at the discretion of the Organizing Authority.
- 4.7. The regatta is open to boats competing in the following events.

Event	Equipment
OnePerson Dinghy	ILCA7
	ILCA6
Skiff	49er
	49erFX
Open Skiff	29er



Two Person Dinghy	470
Open Two Person Dinghy	SNIPE 420
Open One Person Junior Dinghy	Optimist

4.8. When the number of the entries is less than 10 boats, the event of the class will not be held. However, the total number of boats in classes less than 10 boats for the Skiff Events (49er, 49erFX, 29er) of will not be held.

5. ENTRY FEES

5.1. Entry fees shall be as follows:

5.1.1. payment of the entry fee will be accepted by bank transfer.

5.1.2. the entry fee is in Japanese yen and includes consumption tax. Bank transfer fees shall be borne by the competitors.

Equipment	Early Entry fee	Entry Fee	Late Entry fee
ILCA7, ILCA6	12,000 JPY	14,000 JPY	18,000 JPY
49er, 49erFX, 470	13,000 JPY	15,000 JPY	19,000 JPY
420, 29er, SNIPE	9,000 JPY	11,000 JPY	15,000 JPY
Optimist	7,000 JPY	9,000 JPY	13,000 JPY
Coach or Support Boats	3,000JPY	5,000 JPY	9,000 JPY

5.1.3. Other fees Harbor usage fee (ex. fee of berth, fee of shower for competitor or support person) shall be paid by competitors.

5.1.4. Entry fees will not be refunded.

5.1.5. **【Payee's bank account】**

Beneficiary Bank: MUFG Bank, LTD.

SWIFT code / BIC code: BOTKJPJT or BOTKJPJTXXX

Branch Name: Shibuya-Chuo Branch

Beneficiary Account Number: 345-0027952

Beneficiary Name:

-Please enter "[received time of confirmation Email] + name" for payer name.

Ex.) When the received is 2024/09/10 10:34:18) ,

Payer name: 0910103418KanagawaTaro

6. Delete (Missing number)





7. REGATTA FORMAT

If the event has less than 40 entries in each class, then it will be competed in one single fleet. The final format will be published on the Sailing Instructions.

8. SCHEDULE

8.1. The schedule for each class is as follows:

8.1.1. ILCA7, ILCA6, 49er, 49erFX, 470

Date	Event	Time
Day0- Thursday, 23 May 2024	Measurement and Registration	13:30-16:30 hrs.
Day1- Friday, 24 May 2024	Measurement and Registration Warning signal for the first race	08:30-09:30 hrs. 10:45 hrs.
Day2- Saturday, 25 May 2024	Warning signal for the first race	10:30 hrs.
Day3- Sunday, 26 May 2024	Warning signal for the first race Awards ceremony	10:30 hrs. TBA

8.1.2. 420, 29er, SNIPE, Optimist

Date	Event	Time
Day1- Friday, 24 May 2024	Measurement and Registration	13:30-16:30 hrs.
Day2- Saturday, 25 May 2024	Measurement and Registration Warning signal for the first race	08:30-09:30 hrs. 10:45 hrs.
Day3- Sunday, 26 May 2024	Warning signal for the first race Awards ceremony	10:30 hrs. TBA

8.2. The number of races will be as follows:

Equipment	Number of Races
ILCA7, ILCA6, 470	8
49er, 49erFX	12
29er	8
420, SNIPE	6
Optimist	6

8.3. Up to 4 races per day will be held. However, for the SNIPE class it shall be up to 3 races





per day.

8.4. On the last day of racing, no warning signal will be made after 13:30.

9. [NP] [DP] EQUIPMENT INSPECTION

- 9.1. In accordance with RRS 78, boats or equipment may be inspected at any time to ensure compliance with the rules.
- 9.2. A Technical Committee shall be appointed in accordance with RRS 92.

10. Delete (Missing number)

11. VENUE

- 11.1. 1-12-2 Enoshima, Fujisawa, Kanagawa Pref. 251-0036, Japan.
- 11.2. NoR Appendix 1 shows the location of the racing areas.

12. THE COURSES

The courses will be Trapezoid or Windward/Leeward. However, for the SNIPE class courses, the "Rules of Conduct for Conducting National and International Championship Regattas" issued by the SCIRA shall be adopted.

13. Delete (Missing number)

14. SCORING

- 14.1. 1 race is required to be completed to constitute the event.
- 14.2. When fewer than 3 races have been completed, a boat's series score will be the total of her race scores.
- 14.3. When 3 or more races have been completed, a boat's series score will be the total of her race scores excluding her worst score.

15. [NP] [DP] SUPPORT PERSON VESSELS

- 15.1. All support person vessels shall be registered with the Organizing Authority and, will be required to comply with local legislation and the event rules of support person vessels. The Organizing Authority may refuse or accept registrations at their sole discretion.
- 15.2. Registered support person vessels shall act as assistance / rescue vessels in case of need and shall comply with any instruction given by the Race Committee or the Organizing Authority.
- 15.3. The support person vessels must be in third party liability insurance (personal liability insurance and passenger accident insurance).



16. [NP] [DP] BERTHING

Boats shall be kept in their assigned places (Enoshima Yacht Harbor) by the Organizing Authority.

17. INSURANCE

Each participating boat shall be insured with valid third-party liability insurance.

18. RISK STATEMENT

RRS 3 states: 'The responsibility for a boat's decision to participate in a race or to continue to race is hers alone.' By participating in this event each competitor agrees and acknowledges that sailing is a potentially dangerous activity with inherent risks. These risks include strong winds and rough seas, sudden changes in weather, failure of equipment, boat handling errors, poor seamanship by other boats, loss of balance on an unstable platform and fatigue resulting in increased risk of injury. Inherent in the sport of sailing is the risk of permanent, catastrophic injury or death by drowning, trauma, hypothermia or other causes.

19. [NP] [DP] MEDIA RIGHTS, CAMERAS AND ELECTRONIC EQUIPMENT

- 19.1. By participating in the event, competitors grant the Organizing Authority without compensation, the right to use at its sole discretion any videos, still photographs and any footage or prints taken of the competitor or the competitor's equipment during the event.
- 19.2. Boats may be required to carry cameras, sound equipment and positioning equipment as specified and supplied by the Organizing Authority.

20. PRIZES

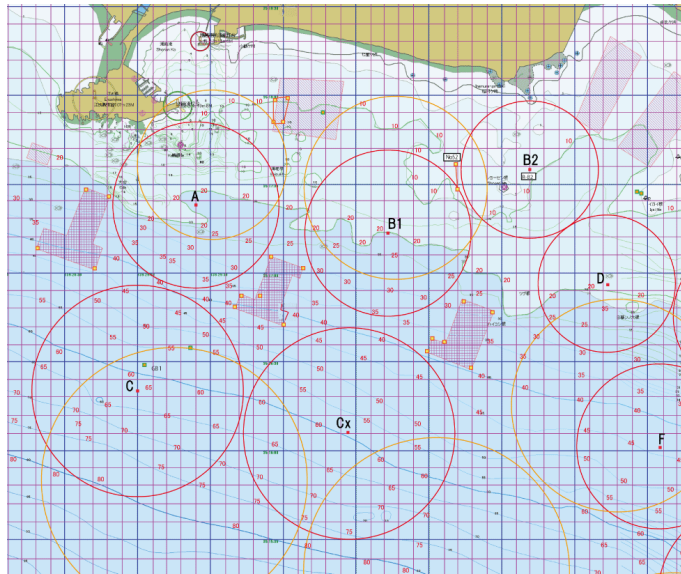
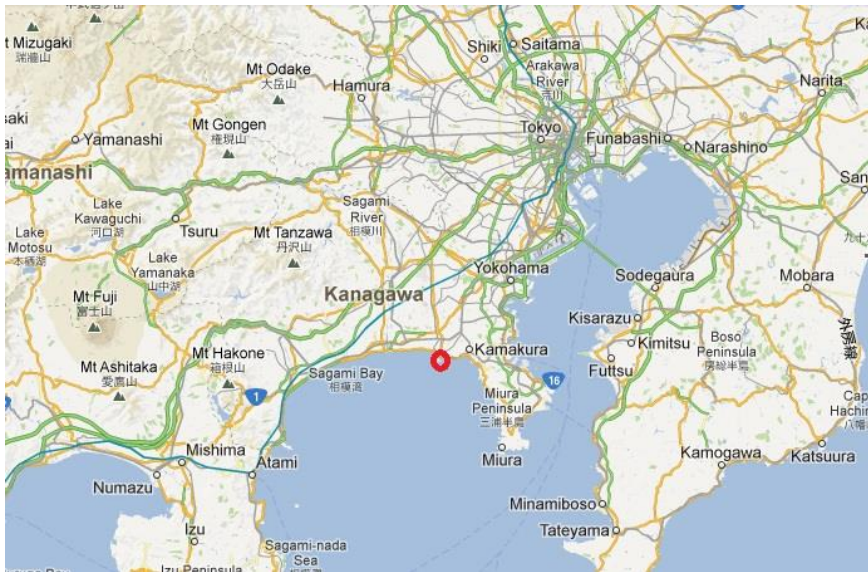
Medals will be awarded to the top 3 boats according to the number of boats in each class.

21. DOPING CONTROL

Doping control will be conducted in accordance with the World Anti-Doping Code. In-Competition testing may be carried out at the venue. Japanese competitors under the age of 18 must be subject to the parental authority of the agreement for the doping testing submitted to the Japan Sailing Federation (Standard format may be obtained from the website of the Japan Anti-Doping Agency or the event website).



NoR Appendix 1



This project is supported by the National Agency for the Advancement of Sports and Health.